

Audi 2017



Audi

TT



TT  
2017

Audi of America  
Audiusa.com  
Facebook.com/Audi

Note: A word about this brochure. Audi of America, Inc., believes the specifications in this brochure to be correct at the time of printing. However, specifications, standard equipment, options, fabrics, and colors are subject to change without notice. Some equipment may be unavailable when your vehicle is built. Please ask your dealer for advice concerning current availability of standard and optional equipment, and your dealer will verify that your vehicle will include the equipment you ordered. Vehicles in this brochure are shown with optional equipment. See your dealer for complete details on the Audi New Vehicle Limited Warranty, twelve-year limited warranty against corrosion perforation, and Audi 24/7 Roadside Assistance. (Roadside assistance coverage provided by Road America in the U.S. Certain conditions apply; see your dealer for details.) Tires supplied by various manufacturers. "Audi," all model names, "Audi connect," "Audi Sport," "MMI," "quattro," "S tronic," "Sideguard," "Singleframe," "TFSI," "ultra" and the four rings logo are registered trademarks of AUDI AG. "Alcantara" is a registered trademark of Alcantara S.p.A. "Apple," "App Store," "iPhone" and "Siri" are registered trademarks of Apple Inc. "Apple CarPlay" and "Apple Music" are trademarks of Apple Inc. "Bang & Olufsen" is a registered trademark of Bang & Olufsen. The BLUETOOTH word mark and logos are owned by the Bluetooth SIG, Inc., and any use of such marks by AUDI AG is under license. "Contigo" is a registered trademark of Ignite USA, LLC. "Facebook" is a registered trademark of Facebook, Inc. "Google," "Google Maps," and "Google Play" are trademarks of Google Inc. © 2016 Google Inc. All rights reserved. "HD Radio" and the HD Radio logo are proprietary trademarks of iBiquity Digital Corporation. "HomeLink" is a registered trademark of Gentex Corporation. "INRIX XD" is a registered trademark of INRIX, Inc. "SiriusXM" and all related marks and logos are registered trademarks of Sirius XM Radio Inc. and its subsidiaries. "Spyder" is a registered trademark of Spyder Active Sports, Inc. "Wi-Fi" is a registered trademark of the Wi-Fi Alliance. All other trademarks are the property of their respective owners. Some European models shown. Some features may not be available at time of order.

# A declaration worthy of making history.

|                     |                        |                      |
|---------------------|------------------------|----------------------|
| <b>TT<br/>Coupe</b> | <b>TT<br/>Roadster</b> | <b>TTS<br/>Coupe</b> |
| 2.0T                | 2.0T                   | 2.0T                 |

In many ways, our past challenges us in our present—not because it was difficult but because it was great, a history that changed how we saw design. We know the best way to honor our iconic heritage is to push the boundaries even further. A commitment of craft and engineering, the 2017 Audi TT and TTS is our answer to the challenge of success. It carries on the legacy of cutting-edge design and evocative performance while fully embracing the vanguard of automotive technology. The TT in all of its incarnations has represented a leap forward. We feel like we've honored that history, by making it again.





2017 Audi TT Roadster shown in Glacier White metallic with available equipment.



2017 Audi TTS Coupe shown in Tango Red metallic with available equipment.



**They aren't just lines.**

The beautifully sculpted sheet metal on the Audi TT isn't just a work of art—it's a science. Each line carries our commitment to bold design, the evolution of an iconic legacy, marking it as a daring presence on the road. But the lines build off an array of striking details, stretching across the profile to enhance the visual tension while connecting the standard LED headlights to our equally distinctive LED taillights. From the marque crowning the Singleframe® grille, to the stylish fuel door, to the twin exhaust tips, this is a showcase of our DNA, the design heritage of Audi performance.

**They're the strands**  
**of our DNA.**



The spirit is in  
the details.



Make a scene  
while taking in  
the scenery.



Enjoy the thrill of the ride while savoring the fresh air. Simply by lowering the retractable acoustic soft top of the Audi TT Roadster, you've changed how you engage the world—and how it engages you. Performance is the kind that encourages long drives under cloudless skies. Transformation is easy, with push-button operation at speeds under 31 mph, lowering the roof in ten seconds—which is just long enough for you to know why people are wishing they were you.

• • •  
2017 Audi TT Roadster shown in Glacier White metallic with available equipment.



## Not just a touching sentiment.

The driver-centric cockpit with its wing-inspired dashboard design and visually striking, more intuitive air outlets with integrated controls both welcome you and help you settle in. Then it becomes a matter of touch, as you feel the high-performance leather/Alcantara® or available Fine Nappa leather and engage the three-spoke flat-bottom multifunction steering wheel with shift paddles. It's all how we put you at the center of our world.



# Give peace of mind a chance.

We understand that you can't control everything you experience on the road. That's why the Audi TT was engineered with a reinforced floor structure that helps absorb impact from side collisions and a rollover protection system in the Audi TT Roadster. It also has a full complement of airbags<sup>1</sup> and our advanced occupant safety cell construction—designed to help put your mind more at ease.



## // Rollover protection

In the event that your TT Roadster rolls over, reinforced roll bars help provide a degree of protection for you and your passengers. They also provide added visual muscle to an already powerful-looking vehicle.





// Engine

2.0-liter turbocharged TFSI® four-cylinder engine.

220 hp / 258 lb-ft.

// Drivetrain

Six-speed S tronic® dual-clutch automatic transmission with quattro® all-wheel drive.

// Performance

Top track speed of 130 mph.<sup>1</sup>

0-60 mph in 5.3 sec (TT Coupe).

0-60 mph in 5.6 sec (TT Roadster).

---

# Proper preparation makes for propulsive performance.

---

The engineering of the Audi TT helps to highlight the core truth of the vehicle: This is a joy to drive. Its size highlights precision handling. Its overall power speaks to confident design. With quattro® all-wheel drive, a powerful 2.0-liter TFSI® engine and an S tronic® dual-clutch transmission, we've provided the tools to help you prepare for a rich, thrilling performance every time you drive.



2017 Audi TT Roadster shown in Glacier White metallic with available equipment.

<sup>1</sup> Top track speed is electronically limited in the U.S. Always obey all speed and traffic laws.

# Study an exhilarating character.

Designed to look just as bold as it feels, the Audi TTS is bestowed with details such as quad exhaust outlets and strong, dramatic curves that showcase its performance profile. We've also added a pronounced S model Singleframe® grille with aluminum-optic double-blade crossbars to define its powerful character.



# TTS



# Some things are better kept to yourself.

It's not that you will want to keep the interior of the Audi TTS a secret—rather, you like to have the privilege of enjoying it all to yourself. From the moment you get inside the vehicle, you will know you are in a true sports car. The three-spoke flat-bottom sport steering wheel with shift paddles, the diamond-stitched sport seats and the sumptuous interior details will prepare you for nearly any venture—solo or with very select company.

# TTS



# Deserving of thunderous applause.



# TTS

The attention-demanding style of the TTS is propelled by a potent 2.0-liter turbocharged TFSI® four-cylinder engine that can deliver 292 hp with a seemingly instantaneous response—getting you from 0 to 60 mph in just 4.6 seconds<sup>1</sup>. But what's power without control? Advanced features like Audi magnetic ride adapt to road conditions and your own driving style, helping to ensure every performance is worthy of an encore.

#### // Engine

2.0-liter turbocharged TFSI® four-cylinder engine.

292 hp / 280 lb-ft.

#### // Drivetrain

Six-speed S tronic® dual-clutch automatic transmission with quattro® all-wheel drive.

#### // Performance

Top track speed of 155 mph<sup>2</sup>

0–60 mph in 4.6 sec.

2017 Audi TTS Coupe shown in Tango Red metallic with available equipment.

1. Always obey all speed and traffic laws. 2. Top track speed is electronically limited in the U.S. Always obey all speed and traffic laws.

# On our radar, off your nerves.



- Camera
- Radar sensors
- Ultrasonic sensors

Dramatization

Audi uses extra sensors for better perception.

Knowing that you can process only so much information at once, we set out to provide you with driving technologies that can lighten the sensory load. With available advanced technologies like Audi side assist,<sup>1</sup> which uses radar sensors to help inform you of vehicles approaching from the side, our innovations help keep you aware of your surroundings.

---

#### // Audi side assist

The available Audi side assist uses radar sensors and two different optical warnings to help keep the driver informed about what is approaching from hard-to-see angles to the side of the vehicle.<sup>1</sup>

---

#### // Parking system plus with rear view camera

Helping to make parking an easier task, the available parking system plus features front and rear acoustic parking sensors. For added benefit, the standard rear view camera offers selectable guidelines for parking in parallel or perpendicular spaces.

---

Please download and visit the Audi library—available at the App Store®, Google Play™ store and [Audiusa.com/brochures](https://www.audiusa.com/brochures)—to dive deeper into the Audi TT as well as other models and Audi information.<sup>2</sup>

1 The features discussed are not substitutes for attentive driving. Please see your owner's manual for further details and important limitations.  
2 Standard text and data usage rates apply.

# Our focus is your focus.

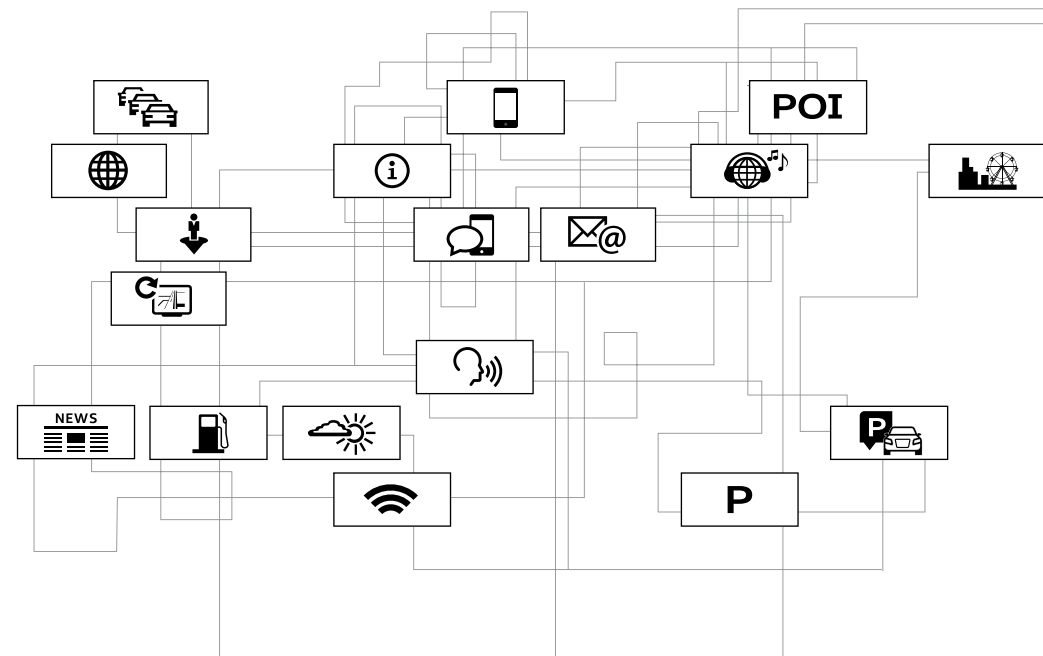
We're letting you revolutionize the way you visualize information. The brilliant Audi virtual cockpit gives you the full picture of what you need to see, in your field of vision, with vibrant color display options. For a more hands-on approach, consider MMI® touch with handwriting-recognition technology and two-button function keys.



Take comfort in the familiarity of your mobile device when you connect it via available Audi smartphone interface. When linked with a compatible mobile device, Apple CarPlay™ will allow you access to Siri® and iPhone® and your favorite apps such as Apple Music™, Maps, Messages and more. If you have a compatible Android device, Google™ Android Auto will connect you with Google Play™ Music, Google Maps™, Google Search and more.<sup>1</sup>

# The soul of a new machine.

Stay connected even when you're on-the-go with the power of the available Audi connect® system.<sup>2</sup> Looking for interesting events in your area? Want to avoid heavy traffic? Want to keep passengers entertained with an in-vehicle Wi-Fi® hotspot?<sup>3</sup> Audi connect has you covered with a robust portfolio of services with the means to help inform, entertain and get you to where you want to go.



## Our vision of live sound.

When we set out to compose the most precise sound system we've ever assembled, we didn't want you to just hear every note. We wanted you to experience them. From sculpted high notes to a crystal-clear mid-range to deep-diving lows, the available 680-watt, 14-channel amplifier Bang & Olufsen® Sound System delivers a stunning recreation of sound that you can feel as much as hear. So whether you're in the mood to be soothed, engaged or inspired, you can expect an immersive experience that can only be matched by the precision driving of your Audi.



<sup>1</sup> Always pay careful attention to the road, and do not drive while distracted. Not all features available on all operating systems. Standard text and data usage rates apply. These features require compatible device, operating system, and mobile apps. See mobile device and app providers for terms and privacy. <sup>2</sup> Always pay careful attention to the road, and do not drive while distracted. Audi connect® should only be used when it is safe and appropriate. Audi connect services and features are optional, provided with the support of authorized affiliated and third party service providers, and may require additional subscriptions with separate terms and conditions. Available on select models. Certain services collect location information, see Terms of Service for information about how to disable and for other details. <sup>3</sup> Always pay careful attention to the road, and do not drive while distracted. The features and technologies discussed above are optional, may require an additional subscription with separate terms and conditions, and should be used only when it is safe and appropriate. The Wi-Fi® hotspot feature is intended for passenger use only.



**A. Retractable acoustic soft top** | Quickly enjoy either sunshine or shade at the push of a button.

**B. Three-spoke multifunction flat-bottom sport steering wheel** | Stay in charge of the driving excitement.

**C. Adaptive rear spoiler** | Visual appeal delivers a true performance benefit as the spoiler automatically deploys at 75 mph<sup>1</sup> and retracts when not needed.

**D. Exterior LED lighting technology** | Full LED headlights and taillights form a distinctive look and provide long-lasting illumination.

**E. Interior leather treatment** | Finely crafted leather surfaces greet you from nearly every angle.

**F. Motorsports-inspired gear selector**

**G. Angular side mirror design**

**H. Simplified climate control system design** | Minimalist air outlets with integrated controls welcome you as you enter.

**I. Beautifully crafted door armrests**

1 Always obey all speed and traffic laws.





You're a try-anything-once, never-sit-still, give-it-your-all kind of person. Life doesn't just string you along; you strive to take life further. Audi Genuine Accessories can help you do just that. For personalizing, help in protecting and showing your Audi pride, our accessories were made just for you.

# Now for the finishing touches.



**Audi beam**  
Add another head-turning feature to your Audi TT. This lens replaces the original entry light under your vehicle's door. When the door is open, the lens projects the four rings logo on the ground. Also available with the quattro® logo.



A

B

**A. Fork-mount bike rack<sup>1</sup>**

Pursuing your favorite pastime just got easier. Made of anodized aluminum, this bike rack features a quick-clamping device that can be secured with the included lock. The wheel holder attachment (sold separately) conveniently holds the front wheel of the bike and is suitable for wheels with disc brakes.

**B. Premium textile floor mats**

These skid-resistant, precision-fit mats are made of long-life fabric to help protect your vehicle's interior from the elements. Mats are black with silver piping, and available in a set of two.

**Compact cargo carrier<sup>1</sup>**  
Extra gear won't take up valuable cargo space with our aerodynamic carrier that offers a generous 10.5-cu-ft capacity. Size: 76" long, 26" wide, 15" high.

<sup>1</sup> All roof-rack system attachments require the base carrier bars. All attachments sold separately. Recreational equipment, sporting equipment and luggage not included.

## Audi Genuine Accessories

### Audi Genuine Sport and Design Accessories

For a bolder appearance or a finishing touch, we have a solution that helps make every mile more enjoyable—and more yours.

- ▶ Stylish wheel designs
- ▶ Audi beam
- ▶ License plate frames

### Audi TravelSpace Transport Accessories

When on the go, help make sure your gear fits with a variety of intelligent and innovative solutions.

- ▶ Bike and ski racks
- ▶ Rooftop cargo carriers
- ▶ In-vehicle cargo bags

### Audi Guard Comfort and Protection Accessories

Help protect what you love. Use Audi Guard Comfort and Protection Accessories to help keep your Audi looking like new—inside and out.

- ▶ Floor mats
- ▶ First aid kit
- ▶ Cargo mats

### Audi Guard Car Care Products

Your Audi TT deserves the very best—a car care line designed specifically for Audi.

- ▶ Leather care
- ▶ Detailing tools
- ▶ Winter protection

#### A. 20" 5-spoke Rima wheel

Enhance the dynamic appearance of your TT with cast-aluminum wheels in this 5-spoke Rima design.



#### B. TT/TTS winter wheel and tire package

Adding style and performance, this winter wheel and tire package features Audi Original winter tires specifically engineered to help improve traction and handling in a variety of winter weather conditions.<sup>1</sup> See your authorized Audi dealer for details.



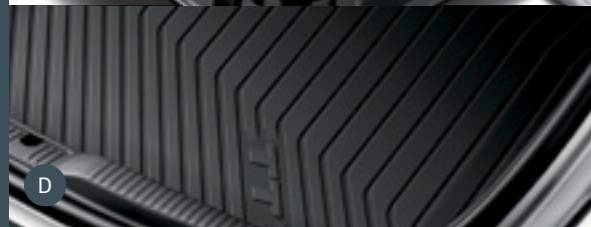
#### C. All-weather floor mats

The all-weather floor mats feature a deep-ribbed, channeled design that helps protect your vehicle's floor and carpeting from the elements. Black mats are available in a set of two and feature the TT logo.



#### D. All-weather cargo mat

Custom fit for your TT, the raised outside edge of the cargo mat helps contain spills and protect cargo-area carpeting from stains. The textured material helps control load shifting. (Coupe only.)

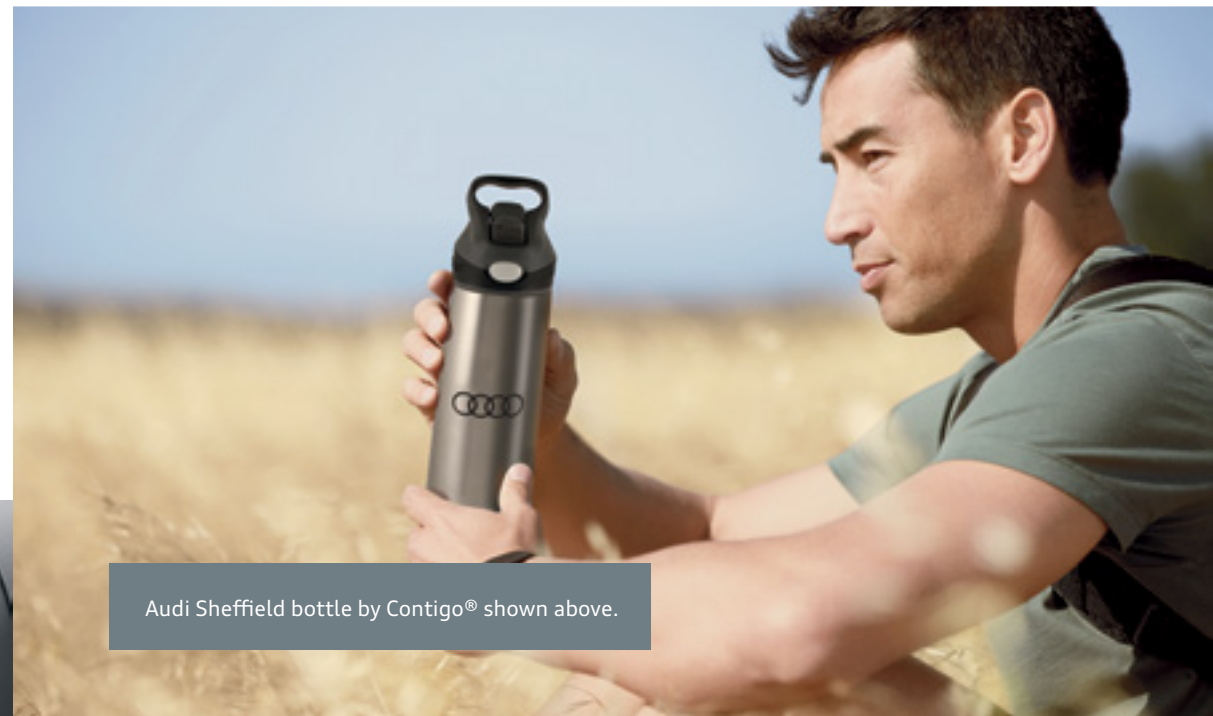


#### E. First aid kit

In the event of an emergency, you may want these essentials close at hand. Includes an emergency blanket, burn/wound dressings and much more.



## Audi collection



Audi Sheffield bottle by Contigo® shown above.

#### F. Men's chronograph watch

Top-quality workmanship combines with precise Swiss movement. This elegant watch features a black leather band, a stainless-steel case, a black dial and the Audi rings logo.



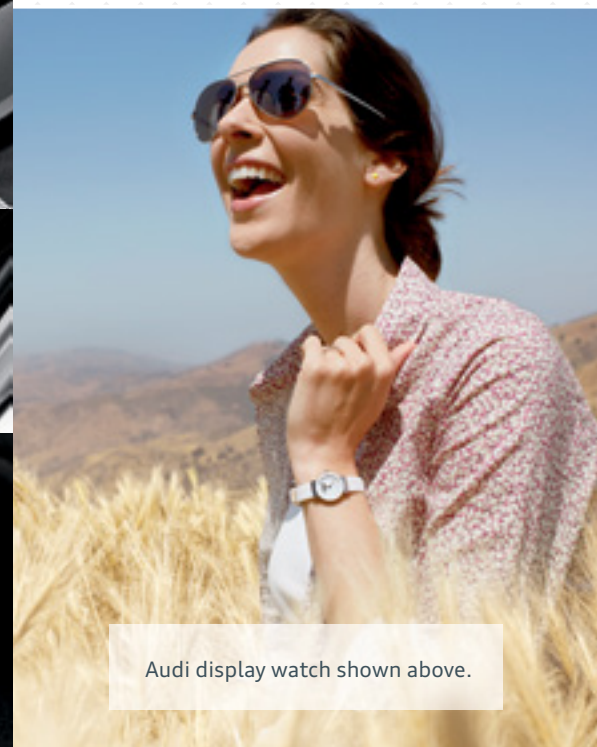
#### G. Men's Ingolstadt jacket

This three-layer performance soft-shell jacket with a bonded fleece lining and an interior membrane, features custom map artwork in the front and the Audi rings logo on the sleeve.



#### H. Ladies' half-zip mock neck by Spyder®

Moisture-wicking, quick-drying, slim-fit material provides plenty of comfort. Features the Spyder® and Audi Sport® logos and is available in black, red, gray or white.



Audi display watch shown above.

Visit [parts.audiusa.com](https://parts.audiusa.com) for more.

<sup>1</sup> When driving during cold, snowy or icy weather conditions, ensure that your vehicle is equipped with appropriate all-season or winter weather tires. Even with appropriate tires, you must always drive in a manner appropriate for the weather, visibility and road conditions.

Visit [audicollectionusa.com](https://audicollectionusa.com) for more.

Black optic package

## **Black is still the new black.**

You could call it a classic, or call it powerful. Whatever you choose to call it, it's undeniable that the Audi TT with the available Black optic package creates an indelible impression. Bold gloss black elements accessorize the exterior, from its Singleframe® grille to mirror housings to new wheel options. No matter the trend of the moment, you can engage in a sporty look that will always keep you looking on point.



2017 Audi TT Roadster shown in Monsoon Gray metallic with available equipment (left).  
2017 Audi TT TTS Coupe shown in Daytona Gray pearl with available equipment (right).

## **Experience more in Audi library.**

Dive deeper into the technical specifications and technologies of the Audi TT through the Audi library app or web viewer.<sup>1</sup> Download the Audi library app on the App Store® or Google Play™ store, or visit [Audiusa.com/brochures](http://Audiusa.com/brochures) to explore a repository containing Audi informational materials—including a look at the 2017 Audi TT.



1. Standard text and data usage rates apply.

# TT



## TT Coupe and Roadster Featured highlights

- Infotainment/Technology**
- > MMI® touch with handwriting-recognition technology
  - > MMI® radio plus with nine speakers and single CD player with MP3 playback capability
  - > Audi virtual cockpit
  - > HD Radio™ Technology
  - > SiriusXM® Satellite Radio with 90-day trial subscription<sup>1</sup>
  - > SD card slots (dual slots)
  - > BLUETOOTH® streaming audio for compatible devices
  - > BLUETOOTH® wireless technology preparation for compatible mobile phones
  - > Voice control
  - > Garage door opener (HomeLink®)
  - > Audi advanced key—keyless start, stop and entry<sup>2</sup>
  - > Audi drive select
  - > Rear view camera
  - > Rain/light sensor for automatic windshield wipers and headlights

### Exterior

- > 18" 5-twin-spoke dynamic design wheels with 245/40 summer performance tires<sup>3</sup>
- > Singleframe® grille
- > Full LED headlights
- > Fixed all-weather light
- > LED taillights with dynamic turn indicators
- > Power-adjustable, auto-dimming, power-folding, heated exterior side mirrors
- > Adaptive rear spoiler
- > Dual exhaust outlets

### Interior/Seating

- > Automatic climate control
- > Three-spoke multifunction flat-bottom sport steering wheel with shift paddles
- > Tilt and telescopic manually adjustable steering column
- > Auto-dimming interior rear view mirror with digital compass
- > Ambient LED interior lighting
- > Black cloth headliner
- > Leather/Alcantara® seating surfaces
- > Heated twelve-way power front sport seats, including four-way power lumbar adjustment
- > 2+2 seating arrangement (TT Coupe)
- > Split folding 50/50 rear seatbacks (TT Coupe)

### Safety

- > Driver and front passenger dual-stage airbags, front thorax side airbags, knee airbags, and Sideguard® head curtain airbags (TT Coupe)<sup>4</sup>
- > Driver and front passenger dual-stage airbags, front head/thorax side airbags and knee airbags (TT Roadster)<sup>4</sup>
- > Front passenger occupant detection for airbags<sup>4</sup>
- > Lower Anchors and Tethers for Children (LATCH) in rear seats (TT Coupe)
- > ESC (Electronic Stability Control) with secondary collision brake assist
- > Anti-lock Brake System (ABS) with Electronic Brake-pressure Distribution (EBD)
- > Tire-pressure monitoring system
- > Electromechanical parking brake
- > Anti-theft alarm system with immobilizer

## TT Coupe and Roadster Stand-alone options

- > Bang & Olufsen® Sound System with 12 speakers and 680 watts
- > 18" 245/40 all-season tires<sup>3</sup>
- > 19" 5-arm-star forged design wheels, gray/polished finish, with 245/35 summer performance tires<sup>3</sup>

## TT Coupe and Roadster Available packages

### Black optic package

- > 19" Audi Sport® 5-double-spoke design wheels, titanium-matte finish, with 245/35 summer performance tires<sup>3</sup>
- > High-gloss black exterior side mirror housings
- > High-gloss black Singleframe® grille

### Technology package

- > MMI® navigation plus<sup>5</sup>
- > Audi connect® with six-month trial subscription<sup>6</sup>
- > Parking system plus (front and rear acoustic parking sensors)
- > Audi smartphone interface
- > Audi side assist<sup>7</sup>

### Audi design selection

- > Murillo Brown Fine Nappa leather with contrast diamond stitching (TT Coupe)
- > Admiral Blue Fine Nappa leather with contrast diamond stitching (TT Roadster)
- > Slate Gray interior elements
- > Extended leather package in Stone Gray
- > Anthracite Aluminum Drift interior inlays
- > Heated twelve-way power front S Sport seats, including four-way power lumbar adjustment
- > Neck-level heating system (TT Roadster)

### S Sport seat package

- > Fine Nappa leather with diamond stitching
- > Heated twelve-way power front S Sport seats, including four-way power lumbar adjustment
- > Neck-level heating system (TT Roadster)

# TTS



## TTS Coupe Featured highlights



In addition to or replaces highlighted features of TT Coupe

- > **Engineering/Performance**
- > 2.0-liter TFSI® turbocharged four-cylinder
- > 292 hp/280 lb-ft torque
- > Acceleration (0–60 mph) in 4.6 seconds
- > Top track speed of 155 mph<sup>8</sup>

### Transmission/Suspension/Chassis

- > Six-speed S tronic® dual-clutch transmission with quattro® all-wheel drive
- > Audi magnetic ride
- > 13.3" ventilated front disc brakes with four-piston fixed aluminum calipers (with TTS badging)/12.2" ventilated rear disc brakes

### Exterior

- > 19" Audi Sport® 5-spoke-blade design wheels with 245/35 summer performance tires<sup>3</sup>
- > Platinum gray Singleframe® grille
- > TTS-specific front/rear fasciae and side sills
- > Aluminum-optic exterior side mirror housings
- > S model quad exhaust outlets

### Interior/Seating

- > Three-spoke multifunction flat-bottom sport steering wheel with shift paddles (with TTS badging)
- > Matte Brushed Aluminum interior inlays
- > Aluminum door sill inlays (with TTS badging)
- > Leather/Alcantara® seating surfaces with contrast diamond stitching (with S embossing)
- > Heated twelve-way power front S Sport seats, including four-way power lumbar adjustment and power adjustable side bolsters

## TTS Coupe Stand-alone options

- > Bang & Olufsen® Sound System with 12 speakers and 680 watts
- > Fine Nappa leather with contrast diamond stitching
- > Red brake calipers
- > 20" Audi Sport® 10-spoke-Y forged design wheels with 255/30 summer performance tires<sup>3</sup>

## TTS Coupe Available packages

### Black optic package

- > 20" Audi Sport® 5-V-spoke design wheels, titanium-matte finish, with 255/30 summer performance tires<sup>3</sup>
- > High-gloss black exterior side mirror housings
- > High-gloss black Singleframe® grille
- > Matte black air intake inserts and rear diffuser

### Technology package

- > MMI® navigation plus<sup>5</sup>
- > Audi connect® with six-month trial subscription<sup>6</sup>
- > Parking system plus (front and rear acoustic parking sensors)
- > Audi smartphone interface
- > Audi side assist<sup>7</sup>

1. SiriusXM® Satellite Radio and SiriusXM® Traffic subscriptions are sold separately or as a package after trial period and are continuous until you call SiriusXM to cancel. See Customer Agreement for complete terms and more information at [www.siriusxm.com](http://www.siriusxm.com). SiriusXM® Traffic service available in select markets. SiriusXM® U.S. Satellite Service available only to those in the 48 contiguous U.S.A., D.C. and Puerto Rico (with coverage limitations). INRIX XD® Traffic is available on all Model Year 16+ A6, A7, T1 and Q7 vehicles and is included with an Audi connect® subscription. Other models (allroad® A3, A4, A5, A8, Q3 and Q5) include SiriusXM® Traffic for four years with the purchase of the vehicle. 2. Some Audi models are equipped with a keyless ignition feature. The details as to how the system works can vary, and Audi owners should consult their owner's literature or an authorized Audi dealer if they have further questions about the operation of this feature. Please note that Audi warns against leaving the vehicle unattended with the engine running, particularly in enclosed spaces. See Owner's Manual for further details and important warnings about the keyless ignition feature. Do not leave vehicle unattended with all-season or winter tires, which offer better traction under those conditions. We suggest you use the recommended winter or all-season tire specified for your car or its equivalent. These high-performance tires also have a lower aspect ratio that aids performance and handling; however, in order to avoid tire, rim, or vehicle damage, it is important that the inflation pressure is regularly checked and maintained at optimum levels. Please also remember in making your selection that, while these tires deliver responsive handling, they may ride less comfortably and make more noise than other choices. Finally, these tires may wear more quickly than other choices. 4. Airbags are supplemental restraint systems and will not deploy in all crash circumstances. Always use safety belts and refer to your owner's manual for the proper use of the restraint systems when transporting children. 5. MMI® navigation plus depends on signals from the worldwide Global Positioning Satellite network. The vehicle's electrical system and existing wireless and satellite technologies must be available and operating properly for the system to function. The system is designed to provide you with suggested routes in locating addresses, destinations and other points of interest. Changes in street names, construction zones, traffic flow, points of interest and other road system changes are beyond the control of Audi of America, Inc. Complete detailed mapping of lanes, roads, streets, toll roads, highways, etc., is not possible, therefore you may encounter discrepancies between the mapping and your actual location. Please rely on your individual judgment in determining whether or not to follow a suggested MMI® navigation plus route. For mapping updates please see your Audi dealer or call 1-800-FOR-AUDI for details. 6. Always pay careful attention to the road, and do not drive while distracted. Audi connect® should only be used when it is safe and appropriate. Audi connect services and features are optional, provided with the support of authorized affiliated and third party service providers, and may require additional subscriptions with separate terms and conditions. Available on select models. Certain services collect location information, see Terms of Service for information about how to disable and for other details. 7. The features discussed are not substitutes for attentive driving. Please see your owner's manual for further details and important limitations. 8. Top track speed is electronically limited in the U.S. Always obey all speed and traffic laws.

## Engineering | Performance

|  | TT Coupe                 | TT Roadster              | TTS Coupe                |
|--|--------------------------|--------------------------|--------------------------|
| Engine type                            | Four-cylinder            | Four-cylinder            | Four-cylinder            |
| Engine block/Cylinder head             | Cast-iron/Aluminum-alloy | Cast-iron/Aluminum-alloy | Cast-iron/Aluminum-alloy |
| Displacement (cc)/Bore and stroke (mm) | 1,984/82.5 x 92.8        | 1,984/82.5 x 92.8        | 1,984/82.5 x 92.8        |
| Horsepower (@ rpm)                     | 220 @ 4,500-6,200        | 220 @ 4,500-6,200        | 292 @ 5,400-6,200        |
| Torque (lb-ft @ rpm)                   | 258 @ 1,600-4,400        | 258 @ 1,600-4,400        | 280 @ 1,900-5,300        |
| Compression ratio                      | 9.6:1                    | 9.6:1                    | 9.3:1                    |
| Valvetrain                             | 16-valve DOHC            | 16-valve DOHC            | 16-valve DOHC            |
| Induction/Fuel injection               | Turbocharged/TFSI®       | Turbocharged/TFSI®       | Turbocharged/TFSI®       |
| Acceleration (0-60 mph)                | 5.3 seconds              | 5.6 seconds              | 4.6 seconds              |
| Top track speed <sup>1</sup>           | 130 mph                  | 130 mph                  | 155 mph                  |

## Transmission | Drivetrain

|  |   |   |   |
|--|---|---|---|
| Six-speed S tronic® dual-clutch transmission with quattro® all-wheel drive | ■ | ■ | ■ |
|--|---|---|---|

## Body | Suspension | Chassis

|  |           |           |           |
|--|-----------|-----------|-----------|
| Aluminum hybrid construction   | ■         | ■         | ■         |
| MacPherson strut front suspension  | ■         | ■         | ■         |
| Four-link rear suspension  | ■         | ■         | ■         |
| Audi magnetic ride   | —         | —         | ■         |
| Ventilated front disc/Solid rear disc brakes (in)  | 12.3/11.8 | 12.3/11.8 | —         |
| Ventilated front brake with four-piston fixed aluminum calipers/ventilated rear disc brakes (in) | —         | —         | 13.3/12.2 |
| Electromechanical power steering system  | ■         | ■         | ■         |
| Progressive steering   | ■         | ■         | ■         |
| Initial steering ratio   | 14.6:1    | 14.6:1    | 14.6:1    |
| Turning diameter, curb-to-curb (ft)  | 34.78     | 34.78     | 34.78     |

## Exterior measurements

|                                    | TT Coupe  | TT Roadster | TTS Coupe |
|------------------------------------|-----------|-------------|-----------|
| Wheelbase (in)                     | 98.6      | 98.6        | 98.6      |
| Length (in)                        | 164.7     | 164.7       | 165.0     |
| Height (in)                        | 53.2      | 53.2        | 52.8      |
| Overall width with mirrors (in)    | 77.4      | 77.4        | 77.4      |
| Overall width without mirrors (in) | 72.1      | 72.1        | 72.1      |
| Track front/rear (in)              | 61.9/61.1 | 61.9/61.1   | 62.0/61.1 |
| Curb weight (lb)                   | 3,164     | 3,373       | 3,241     |
| Drag coefficient (C <sub>w</sub> ) | .30       | .32         | .30       |

## Interior measurements

|   |           |        |           |
|---|-----------|--------|-----------|
| Head room (in, front/rear)              | 37.1/33.8 | 36.6/— | 37.1/33.8 |
| Leg room (in, front/rear)               | 41.1/28.9 | 41.1/— | 41.1/28.9 |
| Shoulder room (in, front/rear)          | 53.6/47.9 | 53.6/— | 53.6/47.9 |
| Cargo volume (cu ft, rear seatbacks up) | 12.0      | —      | 12.0      |
| Cargo volume (cu ft)                    | —         | 7.5    | —         |
| Seating capacity                        | 2+2       | 2      | 2+2       |

## EPA mileage estimates | Capacities | Emissions

|   |         |         |         |
|---|---------|---------|---------|
| S tronic® dual-clutch transmission (city/highway/combined) <sup>2</sup> | NA      | NA      | NA      |
| Engine oil (qt)   | 6.0     | 6.0     | 6.0     |
| Coolant system (qt)   | 9.5     | 9.5     | 9.5     |
| Fuel (gal)  | 14.5    | 14.5    | 14.5    |
| Recommended fuel  | Premium | Premium | Premium |
| Emissions rating  | SULEV   | SULEV   | ULEV II |

■ Standard — Not applicable NA Information not available at time of printing

## Wheels

18" 5-twin-spoke dynamic design



Standard on TT

19" 5-arm-star forged design



Optional on TT

19" Audi Sport® 5-double-spoke design, titanium-matte finish



TT Black optic package

19" Audi Sport® 5-spoke-blade design



Standard on TTS

20" Audi Sport® 10-Y-spoke forged design



Optional on TTS

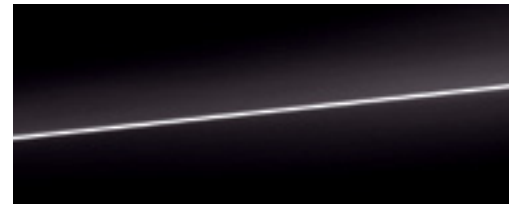
20" Audi Sport® 5-V-spoke design, titanium-matte finish



TTS Black optic package

## Exterior Colors

Brilliant Black



TT, TTS

Ibis White



TT, TTS

Vegas Yellow



TT, TTS

Florett Silver metallic



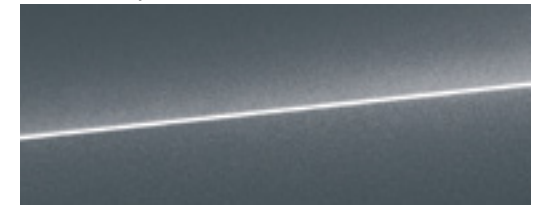
TT, TTS

Glacier White metallic



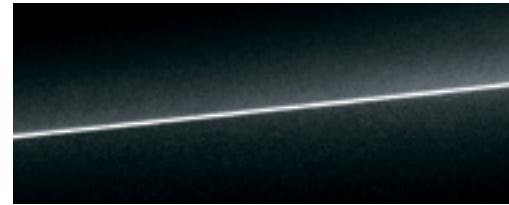
TT, TTS

Monsoon Gray metallic



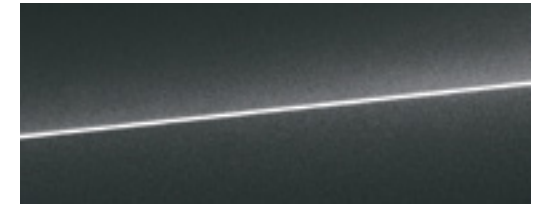
TT

Mythos Black metallic



TT, TTS

Nano Gray metallic



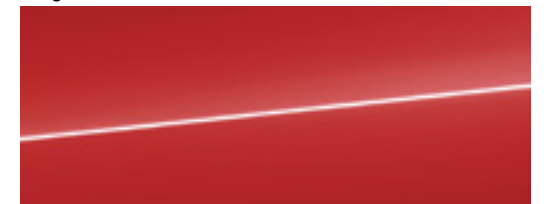
TT, TTS

Scuba Blue metallic



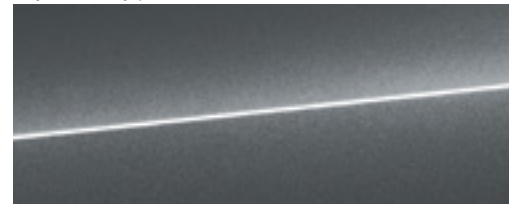
TT

Tango Red metallic



TT, TTS

Daytona Gray pearl



TTS

Sepang Blue pearl



TTS<sup>1</sup>

Ara Blue crystal

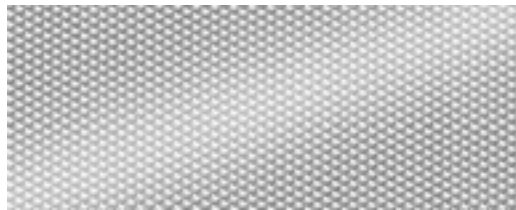


TTS<sup>2</sup>

## Interior Inlays

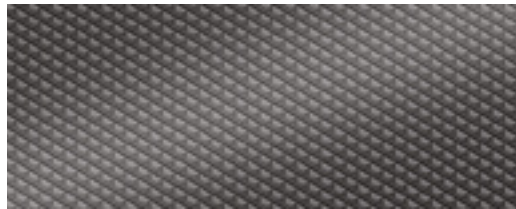


Aluminum Drift



TT

Anthracite Aluminum Drift



TT

Matte Brushed Aluminum



TTS

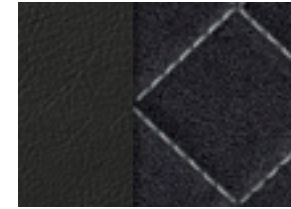
## Interior Colors and Seat Selections

Black leather/Black Alcantara®



TT

Black leather/Black Alcantara® with Silver contrast diamond stitching



TTS

Black Fine Nappa leather with diamond stitching



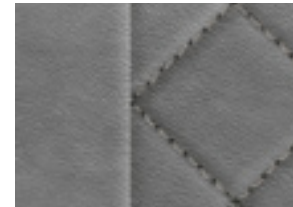
TT

Black Fine Nappa leather with Silver contrast diamond stitching



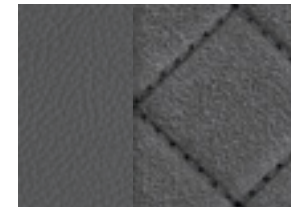
TTS

Rock Gray Fine Nappa leather with diamond stitching



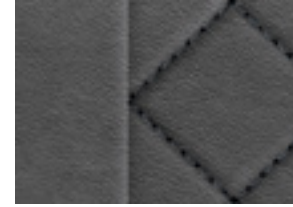
TT

Rotor Gray leather/Rotor Gray Alcantara® with Anthracite contrast diamond stitching



TTS

Rotor Gray Fine Nappa leather with Anthracite contrast diamond stitching



TTS

Murillo Brown Fine Nappa leather with Steel Gray contrast diamond stitching



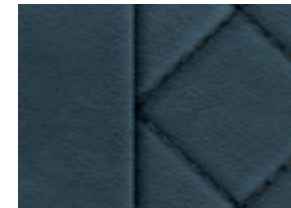
TT Coupe (Audi design selection)

Palomino Brown Fine Nappa leather with diamond stitching



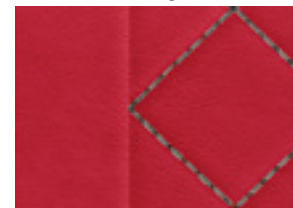
TT

Admiral Blue Fine Nappa leather with Anthracite contrast diamond stitching



TT Roadster (Audi design selection)

Express Red Fine Nappa leather with Granite Gray contrast diamond stitching



TTS



Sport seat



S Sport seat