



The Ultimate  
Driving Machine



# THE NEW BMW X2.

**BMW EFFICIENT DYNAMICS.**  
LESS EMISSIONS. MORE DRIVING PLEASURE.



## THE NEW BMW X2.



## INNOVATION AND TECHNOLOGY.



18 Dynamics and efficiency  
19 Drivetrain and suspension

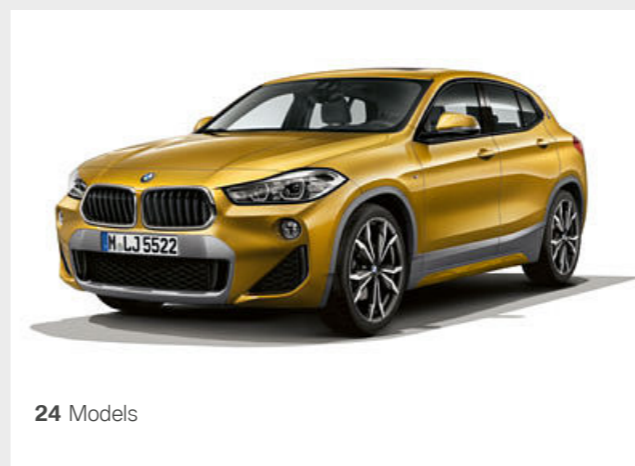


20 Driver assistance  
21 Safety



22 Connectivity and infotainment  
23 Comfort and functionality

## EQUIPMENT.



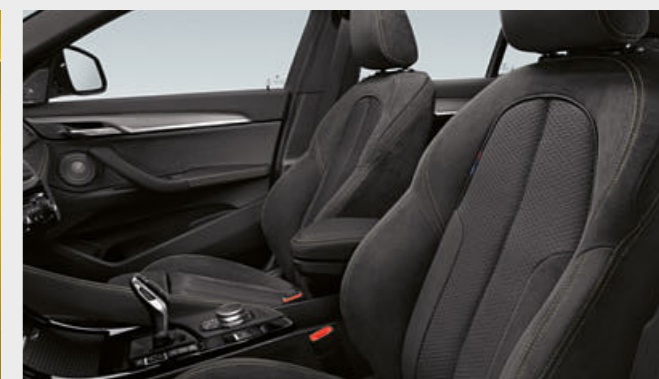
24 Models



30 Additional equipment



36 Exterior colours



38 Interior colours

## DIGITAL DISCOVERY: THE BMW BROCHURES APP.



More information, more driving pleasure: the BMW brochures app offers you a brand new digital and interactive BMW experience. Download the BMW brochures app for your smartphone or tablet now and explore new perspectives of your BMW.



40 Wheels and tyres



41 Genuine BMW Accessories





**I WANT IT ALL.**

**AND MORE.**

*BE THE ONE WHO DARES.*





**I AM EXHILARATION  
AT FIRST GLANCE.**

FOCUSED, FORWARD-THRUSTING FRONT II BRAND NEW,  
REVOLUTIONARY KIDNEY GRILLE DESIGN II LARGE CENTRAL  
AIR INTAKE WITH HEXAGONAL FRAME IN FROZEN GREY II  
FLANKED BY TWO STRIKING, TRIANGULAR AIR INTAKES

Air intake in Frozen Grey is exclusive to M Sport X models.





**I THINK AHEAD,  
NOT AFTERWARDS.**

BMW CONNECTED DRIVE APPS AND SERVICES || BMW CONNECTED PERSONAL MOBILITY ASSISTANT || INTELLIGENT DRIVER ASSISTANCE SYSTEMS, INCLUDING OPTIONAL DRIVING ASSISTANT PLUS AND HEAD-UP DISPLAY





**YOU'LL LIKE  
WHAT YOU SEE.**

SPORTY SILHOUETTE II HOFMEISTER KINK AND EXCLUSIVE  
BMW LOGO IN C-PILLAR II SQUARED-OFF WHEEL-ARCHES II HEXAGONAL  
SHAPED SIDE SKIRTS IN FROZEN GREY\* AND BODY COLOUR

\*Frozen Grey trim is exclusive to M Sport X models





**MY CHALLENGE:  
CHALLENGE CONVENTION.**

DISTINCTIVE AND MEMORABLE REAR DESIGN COMBINING CLASSIC X AND BMW COUPÉ STYLE II POWERFULLY FORMED M REAR SPOILER\* ON M SPORT II EYE-CATCHING BMW SIGNATURE L-SHAPE LED REAR LIGHTS

\*Optional on M Sport X





**I AM WITHOUT LIMIT.**

POWERFUL AND EFFICIENT BMW TWIN POWER TURBO ENGINES II  
BMW xDRIVE WITH HILL DESCENT CONTROL II M SPORT SUSPENSION  
ON M SPORT AND M SPORT X MODELS II IMPRESSIVE TRACTION II  
OUTSTANDING AGILITY II PRECISE HANDLING





**I AM THE NEW BMW X2.**

**REVOLUTIONARY DESIGN, INNOVATIVE TECHNOLOGY AND AN IRRESISTIBLE LIFESTYLE.**  
THE NEW BMW X2 GOES NEW WAYS IN EVERY WAY, THRILLS WITH ITS IMPRESSIVE TALENTS  
AND PROMISES A DRIVING EXPERIENCE THAT OFFERS PURE HAPPINESS.  
LIFE GETS EVEN MORE EXCITING – **IN THE NEW BMW X2.**



# DYNAMICS AND EFFICIENCY.

**BMW EFFICIENT DYNAMICS.**  
LESS EMISSIONS. MORE DRIVING PLEASURE.

## MORE POWER FROM LESS FUEL.

More power from 3 to 12 cylinders. Consume less, experience more – the **BMW TwinPower Turbo engines** offer the greatest possible dynamic performance with the greatest possible efficiency thanks to the newest injection systems, variable output control and sophisticated turbocharger technology. Whether diesel or petrol, and no matter how many cylinders, the engines from the BMW EfficientDynamics engine family allow more agile power delivery and outstanding responsiveness even at low rpms, while being fuel-efficient and low in emissions.

## MORE DRIVING PLEASURE, LESS EMISSIONS.

**BMW EfficientDynamics** includes not only the engine and drivetrain, but rather the whole vehicle concept, including intelligent energy management. Provided as standard in every BMW, a variety of innovative technologies contribute to continuously improving efficiency. Via engine efficiency measures, electrification, lightweight construction methods and optimised aerodynamics, BMW has managed to reduce the CO<sub>2</sub> emissions of its fleet by 33 % since 2000.

## MORE SPEED, LESS WEIGHT.

Lower weight with intelligent lightweight construction. Special consideration for every last detail – intelligent lightweight construction means that the optimal material is found and implemented for each part of the vehicle. With extremely light high-tech materials such as aluminium and carbon fibre, **BMW EfficientLightweight** is pursuing the goal of minimising vehicle weight. That leads to even more dynamic performance, increased stability and heightened vehicle safety and comfort.



### AERODYNAMICS

With targeted measures focusing on aerodynamics, BMW has optimised drag coefficient and efficiency as well as interior acoustics. Fuel consumption has also been reduced. The Air Breather and Air Curtain on the front wheels are targeted measures to further reduce air resistance.

### DRIVE PERFORMANCE CONTROL INCLUDING ECO PRO MODE

Drive Performance Control lets the driver choose between the standard Comfort mode, efficient ECO PRO mode and Sport mode, which enables even more dynamic driving. ECO PRO mode adjusts the characteristics of the accelerator and Steptronic transmission as well as the heating/air conditioning settings to make the drive fuel-efficient.

### INTELLIGENT START/STOP

The Intelligent Start-Stop function enhances driving comfort by switching off the engine only when a specific standing time is expected.

## IN THE NEW BMW X2.

# DRIVETRAIN AND SUSPENSION.

Innovation and Technology 18 | 19



## ENGINE HIGHLIGHTS OF THE NEW BMW X2.

### BMW X2 sDrive20i

BMW TwinPower Turbo four-cylinder petrol engine with 141kW (192hp) and 280Nm of torque  
Acceleration 0–62mph: 7.7 seconds  
Top speed: 141mph (227km/h)  
Combined fuel consumption: [51.4–47.9mpg (5.5–5.9l/100km)]  
Combined CO<sub>2</sub> emissions: [126–134g/km]

### BMW X2 sDrive18d

BMW TwinPower Turbo four-cylinder diesel engine with 110kW (150hp) and 350Nm of torque  
Acceleration 0–62mph: 9.3 seconds  
Top speed: 129mph (207km/h)  
Combined fuel consumption: 62.8–61.4mpg (4.5–4.6l/100km) [62.8–60.1mpg (4.5–4.7l/100km)]  
Combined CO<sub>2</sub> emissions: 119–121g/km [118–124g/km]

### BMW X2 xDrive20d

BMW TwinPower Turbo four-cylinder diesel engine with 140kW (190hp) and 400Nm of torque  
Acceleration 0–62mph: 7.7 seconds  
Top speed: 137mph (221km/h)  
Combined fuel consumption: [60.1–57.6mpg (4.7–4.9l/100km)]  
Combined CO<sub>2</sub> emissions: [124–128g/km]

### BMW X2 xDrive18d

BMW TwinPower Turbo four-cylinder diesel engine with 110kW (150hp) and 350Nm of torque  
Acceleration 0–62mph: 9.2 seconds  
Top speed: 128mph (206km/h)  
Combined fuel consumption: 57.6–54.3mpg (4.9–5.2l/100km)  
Combined CO<sub>2</sub> emissions: 128–137g/km

The figures for output, fuel consumption and CO<sub>2</sub> emissions refer to vehicles with standard manual transmission. [ ] denotes automatic transmission.

Fuel consumption and CO<sub>2</sub> emissions are dependent on chosen wheel/tyre size. Figures are obtained in a standard test cycle. They are intended for comparisons between vehicles and may not be representative of what a user achieves under usual driving conditions. For further information please consult your BMW Retailer.



# DRIVER ASSISTANCE.



The innovative **Driver pack** combines technologies that offer practicality and assurance for every journey.

- Park Distance Control, front and rear, gives an audio warning of object proximity in relation to the vehicle, plus a visual representation on the Control Display.
- Park Assist eases parallel parking by measuring suitable spaces then takes over the steering while the driver controls the accelerator and brakes.
- Driving Assistant draws attention to unintentional lane changes or possible collisions and will automatically brake in emergencies. Also includes City Collision Mitigation, Forward Collision Warning and High-beam Assistant.
- Alternatively upgrade to Driving Assistant Plus for additional safety and comfort with systems including Traffic jam Assistant and Cruise Control with Stop&Go function.

The **Vision pack** is tailored to ensure a greater accuracy and comfort when manoeuvring the vehicle.

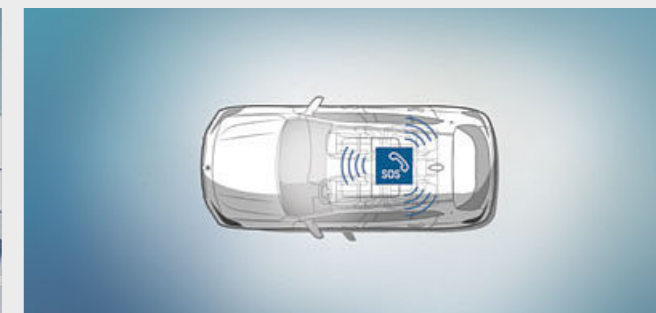
- The Reversing Assist camera shows the area behind the vehicle on the Control Display. Interactive track lines and obstacle markings also help when reversing the vehicle.
- The exterior driver-side mirror features an automatic anti-dazzle function to protect the driver from glare. This also includes an automatically dimming rear-view mirror and electric folding exterior mirrors.

# SAFETY.

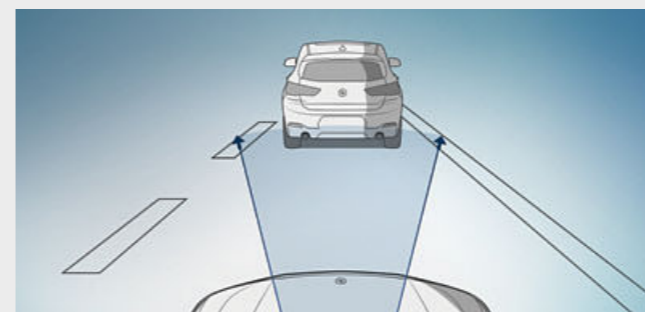
■ Standard equipment    □ Optional equipment



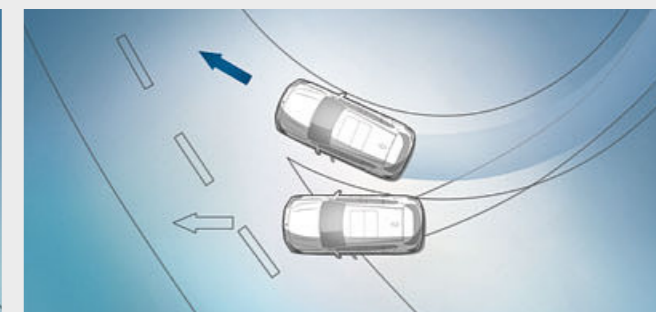
■ The **Attentiveness Assistant** checks the driver's behaviour for signs of fatigue and recommends that the driver take a break if necessary.



■ **BMW Emergency Call** connects with the emergency services without the use of a mobile phone. It transmits information regarding the vehicle's current location and the severity of the accident. The service can also be triggered manually in case other road users require help.



■ City collision mitigation with light city braking function warns of potentially critical situations to help prevent accidents. If there is a risk of collision with a vehicle moving or standing ahead, it provides a two-stage warning and, if necessary, pre-conditions the brakes for increased responsiveness. In case of an emergency, the system initiates braking, ensuring that the collision speed is significantly reduced (up to 35mph). As part of Active Guard.



■ **Dynamic Stability Control+ (DSC+)** stabilises the vehicle as soon as any skidding motion is detected. Its extended functionality includes Cornering Brake Control (CBC), Hill-start and Brake Assist, brake drying and braking readiness. For even more athletic driving, the Dynamic Traction Control (DTC) function allows increased wheel slip.



■ The extremely torsionally stiff but light **body construction** provides the basis for sporty driving dynamics, high-precision steering and agility. What is more, it offers passengers perfect all-round protection at all times.



■ **LED headlights** with extended contents for all models except SE, include cornering lights that generate a bright and efficient bi-LED light for low and high-beam headlights. The cornering lights and turning lights with LED technology allow for adaptive light distribution with increased side illumination.



# CONNECTIVITY AND INFOTAINMENT.

## BMW ConnectedDrive Connected to be free.

CONNECTED  
FOR OVER **40** YEARS.

Focused on the future – from the very beginning. By the 1970s, BMW had already made headway in connected mobility. Another milestone of the digital future was surpassed in 1999 with vehicles with built-in SIM cards. Then came the first online services, Google Services and innovative driver assistance systems such as BMW Head-up Display. Throughout this process, the desires of the customer have always taken centre stage. As the first premium automobile manufacturer, BMW makes it possible to book and pay for services flexibly via the BMW ConnectedDrive Store, in the vehicle or on a computer at home. With the introduction of BMW Connected and the Open Mobility Cloud, BMW is taking the next steps into the future of mobility.

MORE THAN **20** SERVICES IN THE  
BMW CONNECTED DRIVE STORE.

ConnectedDrive Services forms the basis for intelligent BMW ConnectedDrive functions, as well as for the integration of selected smartphone apps. This equipment also provides access to the BMW ConnectedDrive Store, in which services and apps can be ordered or extended any time and anywhere to suit the user's individual requirements – for example, with Concierge Services or Online Entertainment, every drive can be turned into a convenient and entertaining experience.

IN TOUCH **24/7** WITH  
BMW CONNECTED.

What would it be like if you were never late again? What if your BMW already knew your regular destinations? How would you like reliable navigation, whether you're sitting in your vehicle or not? BMW Connected provides you with the information you need, when and where you want it. BMW Connected is a personal mobility assistant which facilitates your everyday mobility and aids you in reaching your destinations relaxed and on time. With the BMW Connected App, mobility-relevant information such as recommendations for optimal departure times are available via a smartphone or smartwatch and can be seamlessly transmitted to the car.



### BMW CONNECTED+

BMW Connected+ provides a digital bridge between smartphones and your BMW. It delivers the next level of in-car personalisation and smartphone content integration on the Control Display. This makes display and operation in the vehicle simpler than ever.

### WiFi HOTSPOT

Wifi hotspot<sup>1</sup> preparation includes a built-in WiFi hotspot using the LTE standard, which allows for a paid Internet connection. The vehicle is connected via the built-in SIM card with a fee-based hotspot plan from a service provider.

### CONCIERGE SERVICES

Optional Concierge services connects the driver through to a BMW Customer Information Centre at the touch of a button. They can locate a particular restaurant, the closest cash dispenser or an emergency pharmacy and send the address details directly to the BMW Navigation system.

## IN THE NEW BMW X2.

# COMFORT AND FUNCTIONALITY.

Innovation and Technology 22 | 23

■ Standard equipment □ Optional equipment



The **Comfort pack** helps to achieve the best seat position and a touch of luxury. Steering wheel heating quickly warms up the rim of the steering wheel at the push of a button; especially useful in winter.

- The electric seat adjustment is easy to use and the memory function allows you to save your preferred settings for the seat and exterior mirrors.
- The lumbar support for the driver and front passenger seats and can be adjusted both vertically and laterally, allowing for an optimised seating position.

The **Tech pack** provides a tailored combination of advanced technologies that offers superior convenience and practicality. The latest generation of BMW Navigation system with iDrive 6 software and 8.8" touchscreen display makes each journey a true BMW experience.

- Enhanced Bluetooth with wireless charging offers a comprehensive telephony package with Bluetooth connectivity and the technical capacity for WiFi hotspot.
- Full-colour BMW Head-up Display projects all relevant driving information into the driver's field of vision.

<sup>1</sup> The WiFi hotspot preparation enables in-vehicle use of the internet with the maximum LTE standard. Use is subject to cost.



# SE.

# SPORT.

Discover more with the new BMW brochures app. Now available for your smartphone and tablet.

■ Standard equipment □ Optional equipment



■ In the BMW X2, classic BMW driver orientation, the dynamic lines of the decorative surfaces and contrast stitching in the instrument panel combine to create an exclusive space focused on the driving experience. The functional control elements are in High-gloss Black and are shown here in combination with Oxide Silver interior trim with Black, High-gloss finisher.



□ Extended lighting offers exterior and interior lighting using LED technology for extra convenience and ambience. Features include a choice of six colours for front and rear ambient lighting, dashboard and door interior trim finisher.

### SE model equipment features:

- 17" light alloy V-spoke style 560 wheels
- Seats in Grid cloth; other upholsteries available
- Air conditioning, automatic with two-zone control
- Extended storage
- BMW Navigation system with 8.8" touchscreen display
- Halogen headlights with daytime running lights in LED technology
- Drive Performance Control



■ 17" light alloy V-spoke style 560 wheels, Reflex Silver, 7.5J x 17 with 225/55 R17 tyres.

### Sport model equipment features:

- 18" light alloy Double-spoke style 567 wheels
- Contrast stitching on centre console and mid-section of dashboard to match upholstery seam
- Exterior trim, High-gloss Shadowline
- Floor mats with contrasting surround to match stitching on dashboard and centre console
- Interior trim, Black, High-gloss with Pearl Chrome finisher
- LED headlights with extended contents
- LED fog lights, front
- Sport seats, front
- Race cloth upholstery in Anthracite with Grey highlight
- Roof trims in body colour



■ 18" light alloy Double-spoke style 567 wheels, Reflex Silver, 7.5J x 18 with 225/50 R18 tyres.



Discover more with the new BMW brochures app. Now available for your smartphone and tablet.

■ Standard equipment □ Optional equipment



■ The M leather steering wheel in BMW M-specific three-spoke design and with contoured thumb rests sits particularly well in the hands. The sporty look in the interior is further enhanced with Aluminium Hexagon interior trim with Estoril Blue finisher.



■ Standard Sport seats in a specific design offer even more comfortable hold thanks to raised seat base and backrest sides as well as additional adjustment options such as seat depth and backrest width. Optional Black Dakota leather with perforation and Blue contrasting stitching combine perfectly with the interior trims and underscore the sporty ambience.

#### M Sport model exterior equipment:

- M Sport aerodynamic bodystyling including Front and rear bumper (multi-part design) in body colour with Dark Shadow insert
- Front centre air intake with Dark Shadow insert
- Door cladding and wheel arch trims in body colour
- Mirror frames and B-Pillar trim in High-gloss Shadowline
- Roof trims in body colour
- Side sill covers in body colour with Dark Shadow insert
- Window frame, recess covers, mirror frames and B-Pillar/ C-Pillar trim in High-gloss Shadowline
- 19" M light alloy Double-spoke style 715 M wheels with run-flat tyres; or 20" M light alloy Double-spoke style wheels 716 M with run-flat tyres optionally available
- Exclusive in Misano Blue metallic paint; other colours available
- Exterior trim, High-gloss Shadowline
- LED front foglights
- LED headlights with extended contents
- M Sport suspension
- M side designation, Chrome
- M rear spoiler

#### M Sport model interior equipment:

- Door sill finishers with M designation, front
- Floor mats with contrasting surround to match stitching on dashboard and centre console
- Sport seats for driver and front passenger upholstered in Micro cloth/ Alcantara Anthracite with Blue or Yellow highlight; other upholstery available
- Seat heating, front
- M Sport multi-function leather steering wheel with cruise control and speed limiting function
- Headlining, Anthracite
- Interior trim Aluminium Hexagon with Estoril Blue finisher; other trims available
- LED ambient lighting in upper door trim and dashboard trim
- Remote control with integrated key and M specific highlight
- Contrast stitching on centre console and mid-section of dashboard to match upholstery seam



■ 19" M light alloy Double-spoke style 715 M wheels, Orbit Grey, 8J x 19 with 225/45 R19 run-flat tyres.



□ 20" M light alloy Double-spoke style 716 M wheels, 8J x 20 with 225/45 run-flat tyres.<sup>1</sup>

<sup>1</sup> Available with M Sport Plus pack which also includes Sun protection glass, Extended lighting and Loudspeaker system – harman/kardon. For more information contact your local BMW Retailer.



Discover more with the new BMW brochures app. Now available for your smartphone and tablet.

■ Standard equipment □ Optional equipment



■ The distinctive contrast stitching in the instrument panel is colour-matched to the seat stitching and floor mat piping, emphasising the dynamic driver orientation of the cockpit. The contrast stitching perfectly enhances each respective upholstery colour. The M leather steering wheel is an additional sporty highlight.



■ Standard Sport seats in optional Micro cloth/Alcantara Anthracite with Yellow highlight are perfectly matched to the optional Galvanic Gold metallic paint and further underline the rally sport styling inside. Seats alternatively available in standard Dakota leather.

#### M Sport X model exterior equipment:

- M Sport X aerodynamic bodystyling including;
  - Front and rear bumper (multi-part design) in body colour with Frozen Grey insert
  - Front centre air intake with Frozen Grey insert
  - Door cladding and wheel arch trims in Frozen Grey
  - Roof trims in body colour
  - Side sill covers in Frozen Grey with body colour insert
  - Mirror frames and B-Pillar trim in High-gloss Shadowline
  - Window frame, recess covers, mirror frames and C-Pillar trim in Satin Aluminium
- 19" M light alloy Double-spoke style 722 M wheels with run-flat tyres; or 20" M Double-spoke style 717 M wheels with run-flat tyres optionally available
- Exterior trim, Satin Aluminium
- LED front foglights
- LED headlights with extended contents
- M Sport suspension
- M side designation, Chrome
- Exclusive Galvanic Gold metallic paint; other colours available
- Roof rails, Satin Aluminium
- Rear spoiler (image shows optional M Sport rear spoiler)

#### M Sport X model interior equipment:

- Door sill finishers with M designation, front
- Floor mats with contrasting surround to match stitching on dashboard and centre console
- Sport seats for driver and front passenger in Dakota leather; other upholsteries available
- Seat heating, front
- M Sport multi-function leather steering wheel with cruise control and speed limiting function
- Headlining, Anthracite
- High-gloss Black centre console trim
- Interior trim Aluminium Hexagon Anthracite with Pearl Chrome finisher; other trims available
- LED ambient lighting in upper door trim and dashboard trim
- Remote control with integrated key and M specific highlight
- Contrast stitching on centre console and mid-section of dashboard to match upholstery seam



■ 19" M light alloy Y-spoke style 722 M wheels, Orbit Grey, 8J x 19 with 225/45 R19 run-flat tyres.



□ 20" M light alloy Double-spoke style 717 M wheels, Orbit Grey matt, 8J x 20 with 225/40 R20 run-flat tyres.<sup>1</sup>

<sup>1</sup> Available with M Sport X Plus pack which also includes Sun protection glass, Extended lighting and Loudspeaker system – harman/kardon. For more information contact your local BMW Retailer.



# ADDITIONAL EQUIPMENT.

Discover more with the new BMW brochures app. Now available for your smartphone and tablet.

■ Standard equipment □ Optional equipment



■ LED headlights with extended contents include cornering lights that generate efficient bi-LED light for low and high-beam headlights.<sup>1</sup>



□ Standard with M Sport models, the M rear spoiler, fitted to the top of the tailgate, emphasises the car's athletic silhouette and reduces unwanted lift.



■ BMW Kidney grille in Chrome with Black slats.



□ When open, the electric panoramic glass roof provides a great deal of fresh air. Closed, it creates a bright, light-flooded atmosphere in the interior. It opens and closes completely automatically at the push of a button, or remotely, and is equipped with slide and lift functions, a roller sunblind and wind deflector.



■ Front halogen headlights for SE models with LED daytime driving lights have two directly-emitting light sources in each headlight and manual high beam throw control.



■ The two-part rear lights, including tail and braking lights with LED technology, are equipped with dynamic brake lights.



□ The sun protection glass for the rear window and tinted rear side windows reduces unwanted warming of the interior.<sup>2</sup>



□ Comfort Access allows passengers to enter the car via the front doors and to open the tailgate without having to actively use the key.



■ The automatic tailgate operation opens and closes the tailgate electrically. Simply press a button.



□ High-gloss Shadowline exterior trim features numerous design details in Black High-gloss to boost the vehicle's athletic and elegant character. These include the side window frame surrounds, window recess finishers, B-pillar trim, as well as details on the C-pillars and exterior mirrors.<sup>3</sup>



□ Exterior trim finished in Satin Aluminium trim including window recess covers, window-frame surround and embellisher surround on C-pillar. In contrast High-gloss Black finish to B-pillar, mirror triangles, mirror cover panel and mirror frame complete the look (mirror caps remain in body colour).<sup>4</sup>



■ Two easily visible, single-flow, round exhaust tailpipes with a diameter of 90 millimetres are located on each side at the rear, with Chrome finishers.



□ The towbar with electrically adjustable tow ball and trailer stability control is approved for heavy loads of up to 2000kg.

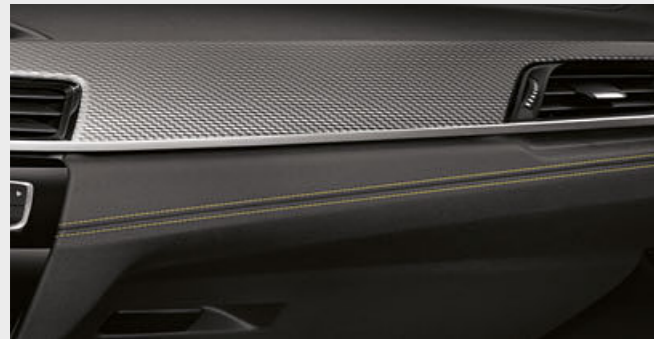
<sup>1</sup> Standard with M Sport and M Sport X models, not available with SE.  
<sup>2</sup> Available with Sport Plus pack, M Sport Plus pack and M Sport X Plus pack.  
<sup>3</sup> Standard with Sport and M Sport models.  
<sup>4</sup> Standard with M Sport X models.



# ADDITIONAL EQUIPMENT.

Discover more with the new BMW brochures app. Now available for your smartphone and tablet.

■ Standard equipment □ Optional equipment



■ Contrast stitching in the centre console and instrument panel with all upholstery variants. The contrasting decorative stitching are each perfectly colour-matched to the chosen upholstery.



■ Sport seats have high seat and backrest bolsters, providing optimal support for the driver and front passenger even during athletic driving. In contrast to the standard seats, their seat angle, seat depth, armrest width and thigh rests can be individually adjusted.<sup>1,2</sup>



□ Extended lighting offers exterior and interior lighting using LED technology for extra convenience and ambience. Features include a choice of six colours for front and rear ambient lighting, dashboard and door interior trim finisher.<sup>4</sup>



■ Extended storage offers additional storage options in the interior and luggage compartment. It includes a rear centre armrest with two cupholders, a storage compartment with net on the right side of the luggage compartment and nets on the front seat backrests.



■ The M Sport leather steering wheel, including multi-function buttons, features a steering wheel rim in Black Nappa leather and contoured thumb rests.<sup>1</sup>



■ The Black Sport leather steering wheel with a thick rim and contoured thumb rests has an exceptionally pleasant, high-grip feel.



□ The seat heating for driver and front passenger allows for heating of the entire seat base and backrest.<sup>1</sup>



□ The electric seat adjustment allows preferred settings for the seat and the exterior mirrors to be saved using the memory function.<sup>3</sup>



□ The harman/kardon loudspeaker system, with 12 speakers, is optimally designed to suit the interior's sound characteristics and guarantees an exceptional music experience. Tweeters and subwoofers deliver a brilliant, powerful range of sound. Elegant aluminium loudspeaker fronts feature harman/kardon lettering for a high-class look.<sup>4</sup>



■ The loudspeaker system - with two-way, six-speaker, 4 x 25W loudspeaker system (100W amplifier power).



■ Automatic air conditioning with two-zone control includes Automatic Air Recirculation (AAR) with a micro active carbon filter, as well as fogging and solar sensors.



■ Anthracite headlining: headlining and trim on the vehicle's pillars and sun visors feature Anthracite cloth.<sup>1</sup>



□ The eight-speed Sport automatic transmission offers sporty gear changes, whether automatic or manual, using gearshift paddles or gear lever.



□ The lumbar support for the driver and front passenger seats can be adjusted both vertically and laterally, allowing for an orthopaedically optimised seating position.<sup>3</sup>



■ The through-loading system includes rear seat backrests that can be flexibly divided in a 40:20:40 ratio.



■ Various storage options increase the level of comfort and ensure that the interior remains tidy.



□ Interior and driver-side exterior mirrors with automatic anti-dazzle function, including electric fold-in function for the exterior mirrors and automatic curb parking function for the front passenger exterior mirror.<sup>5</sup>

<sup>1</sup> Standard with M Sport and M Sport X models.

<sup>2</sup> Standard with Sport models.

<sup>3</sup> Available with Comfort pack.

<sup>4</sup> Available with Sport Plus pack, M Sport Plus pack and M Sport X Plus pack.

<sup>5</sup> Available with Vision pack.



# ADDITIONAL EQUIPMENT.

Discover more with the new BMW brochures app. Now available for your smartphone and tablet.

■ Standard equipment □ Optional equipment



□ BMW Navigation Plus features an iDrive Touch Controller, a built-in 8.8" touch display and an instrument cluster with high-resolution 5.7" TFT display. The system is operated intuitively using either the iDrive Touch Controller, the touch screen, direct menu control buttons, eight functional bookmarks or Voice Control.<sup>1,2</sup>



□ The full-colour Head-up Display projects information relevant to the journey directly into the driver's field of vision. The display includes information such as the current speed, navigation directions, Speed Limit Info incl. no-overtaking indicator, along with telephone and entertainment lists.<sup>2</sup>



□ Enhanced Bluetooth with wireless charging offers a comprehensive package with Bluetooth connectivity and the technical capacity for a WiFi hotspot.<sup>2</sup>



□ As part of Connected+, the Share live trip status<sup>2</sup> function allows you to securely share your time of arrival and current location with friends and family during a trip. The recipient receives a link to a website that displays the destination and current location of the vehicle on a map. (Inclusive for 1 year, renewable thereafter).



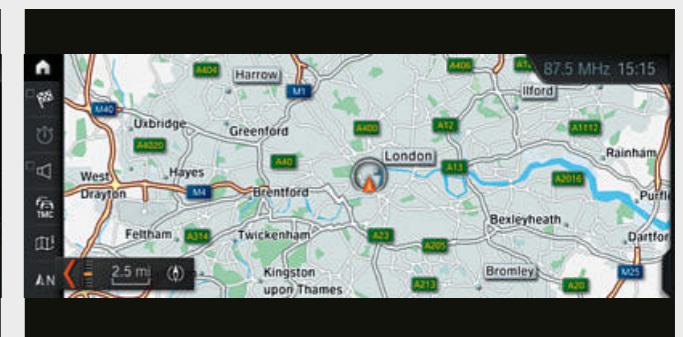
■ The radio, telephone and audio streaming functions can all be used with the "Media" communications and information system.



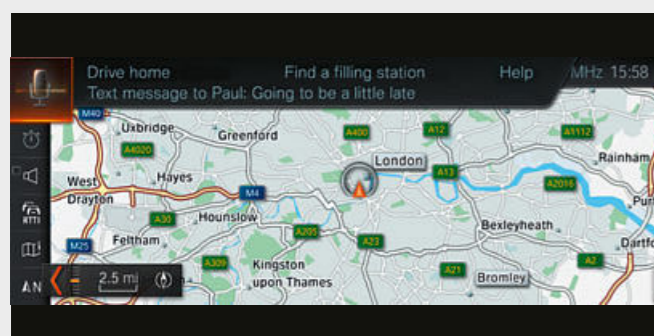
■ Instrument cluster with Black optic display featuring superimposed dials and a 5.7" colour screen showing speedometer, tachometer, fuel gauge, navigation arrows and an instant fuel economy readout.



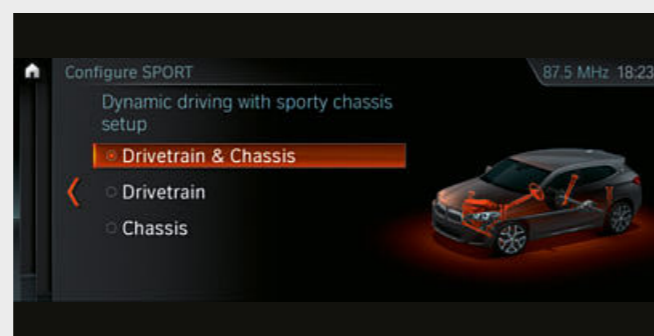
□ Driving Assistant draws the driver's attention to an unintentional lane change or possible collision and brakes automatically in an emergency.<sup>3</sup>



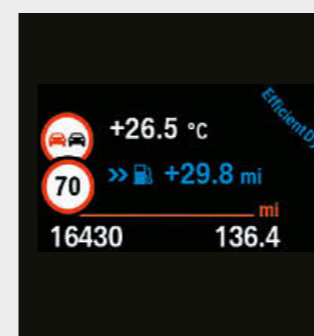
■ Real Time Traffic Information<sup>2</sup> delivers traffic information about motorways, country and main roads, as well as numerous urban routes.



□ Intelligent Voice Assistant understands natural speech and optimises recognition rate over a large range of individual and situational variations thanks to Offboard voice processing. It also understands linguistic varieties, dialects and jargon. This enables a substantially greater range of possibilities when dictating text messages or emails. (Subscription required).



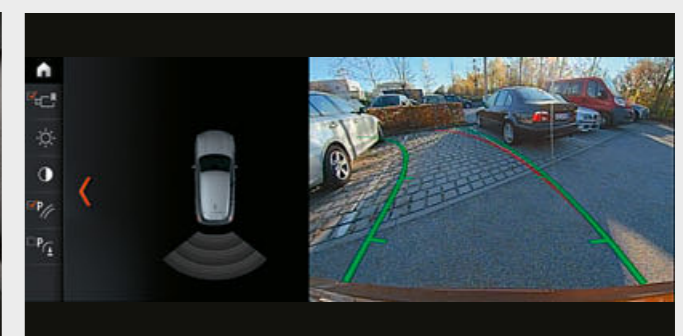
□ The adaptive suspension with a lowering of 10mm makes it possible to adjust the damper characteristics to suit the driving situation and combines ride comfort and driving dynamics with the best possible safety. Via Drive Performance Control, the driver can choose between the standard Comfort mode or Sport mode.



■ The intelligent Speed Limit Info system detects speed limits using a camera and compares the information with navigation system data to establish current restrictions.



□ Driving Assistant Plus offers warning and collision safeguard functions, camera-based Cruise Control and Traffic Jam Assist.<sup>3</sup>



□ The Reversing Assist camera facilitates orientation when reverse parking and when reversing at speeds below 10mph. It shows the area behind the car in the Control Display. Interactive track lines for measuring distance and turning circles assist you when manoeuvring. Obstacles are marked in colour.<sup>4</sup>

<sup>1</sup> As part of BMW ConnectedDrive, in selected European countries, the system automatically updates maps for 3 years up to four times per year.

<sup>2</sup> Available with Tech pack.

<sup>3</sup> Driving Assistant available with Driver pack, alternative upgrade to Driving Assistant Plus.

<sup>4</sup> Available with Vision pack.



# EXTERIOR COLOURS.

Equipment 36 | 37

Discover more with the new BMW brochures app. Now available for your smartphone and tablet.

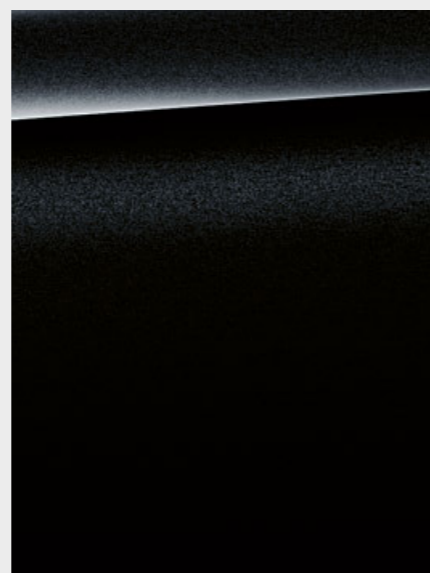
■ Standard equipment □ Optional equipment



■ **Non-metallic** 668 Black<sup>1</sup>



□ **Non-metallic** 300 Alpine White



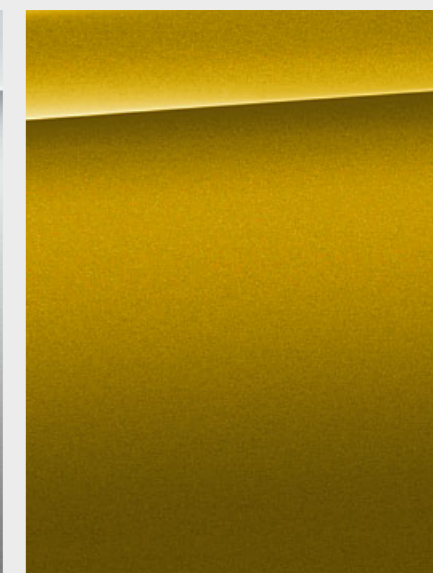
□ **Metallic** 475 Black Sapphire



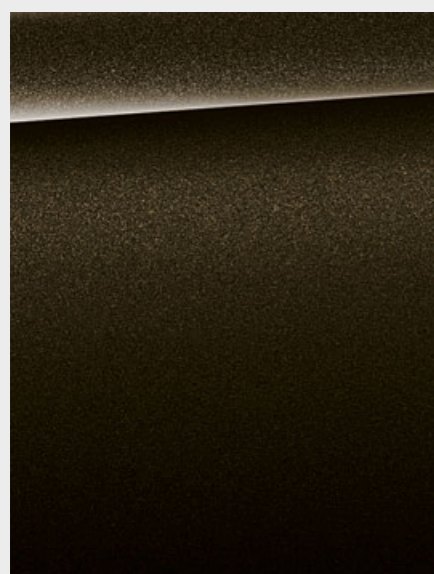
□ **Metallic** A96 Mineral White



□ **Metallic** A83 Glacier Silver<sup>1</sup>



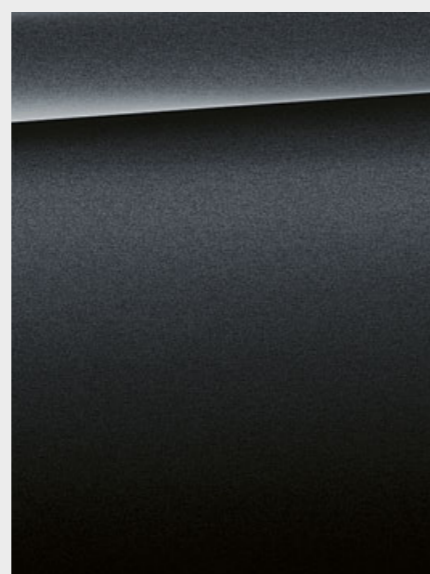
□ **Metallic** WC1P Galvanic Gold<sup>3</sup>



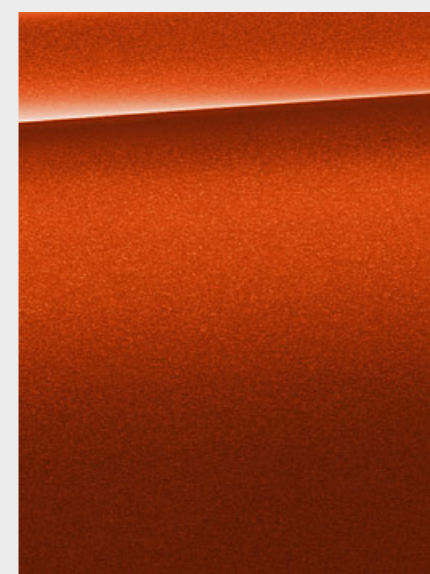
□ **Metallic** C07 Sparkling Storm<sup>2</sup>



□ **Metallic** C10 Mediterranean Blue<sup>2</sup>



□ **Metallic** B39 Mineral Grey



□ **Metallic** C1F Sunset Orange



□ **Metallic** C1D Misano Blue<sup>3</sup>

**[Colour samples]** These colour samples are intended as an initial guide to the colours and materials available for your BMW. However, experience has shown that printed versions of paint, upholstery and interior trim colours cannot in all cases faithfully reproduce the

appearance of the original colour. Please discuss your preferred colour choices with your BMW Retailer. There you can also see original samples and be assisted with any requests.

<sup>1</sup> Not available with M Sport and M Sport X models.

<sup>2</sup> Not available with M Sport models.

<sup>3</sup> Exclusively available with M Sport and M Sport X models.



# INTERIOR COLOURS.

Discover more with the new BMW brochures app. Now available for your smartphone and tablet.

■ Standard equipment □ Optional equipment

## CLOTH

Available with



■ SE

**Grid cloth**  
EGAT Anthracite

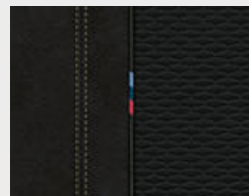


■ Sport

**Race cloth**  
ERL1 Anthracite with Grey highlight

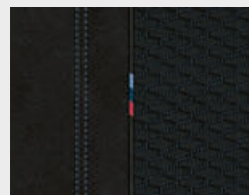
## MICRO CLOTH/ ALCANTARA

Available with



■ M Sport  
□ M Sport X

**Micro cloth/  
Alcantara HMIL**  
Anthracite with Yellow highlight



■ M Sport  
□ M Sport X

**Micro cloth/  
Alcantara HMAT**  
Anthracite with Blue highlight

## LEATHER

Available with



□ SE  
□ Sport  
□ M Sport  
■ M Sport X

**Dakota leather**  
PDSW Black with Grey stitching



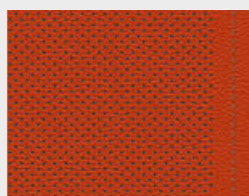
□ SE  
□ Sport  
□ M Sport  
■ M Sport X

**Dakota leather**  
PDMZ Mocha with Walnut stitching



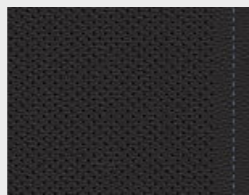
□ SE  
□ Sport  
□ M Sport  
■ M Sport X

**Dakota leather**  
PDOA Oyster with Grey stitching



□ Sport  
□ M Sport  
■ M Sport X

**Dakota leather**  
PDFM Magma Red with Grey stitching



□ M Sport  
■ M Sport X

**Dakota leather**  
PDN4 Black with Blue stitching

## INTERIOR TRIMS

Available with



■ SE

4FS Oxide Silver with Black, High-gloss finisher



□ Sport  
□ M Sport  
□ M Sport X

4F7 Fine Oak Matt wood with Pearl Chrome finisher



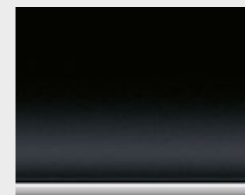
□ Sport  
□ M Sport  
□ M Sport X

4LR Finline Stream wood with Pearl Chrome finisher



□ Sport  
□ M Sport  
□ M Sport X

4LS Brushed Aluminium with Pearl Chrome finisher



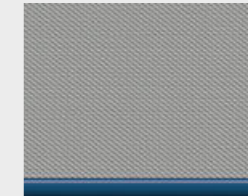
■ Sport  
□ M Sport  
□ M Sport X

4LU Black, High-gloss with Pearl Chrome finisher



□ M Sport  
■ M Sport X

4WP Aluminium Hexagon Anthracite with Pearl Chrome finisher



■ M Sport  
□ M Sport X

4WF Aluminium Hexagon with Estoril Blue finisher



□ M Sport  
□ M Sport X

4WE Aluminium Hexagon with Pearl Chrome finisher



# WHEELS AND TYRES.

Discover more with the new BMW brochures app. Now available for your smartphone and tablet.



■ 17" light alloy V-spoke style 560 wheels, Reflex Silver, 7.5J x 17 with 225/55 R17 tyres.<sup>1</sup>



□ 17" light alloy Double-spoke style 564 wheels, Reflex Silver, 7.5J x 17 with 225/55 R17 tyres.



□ 17" light alloy Turbine style 561 wheels, BMW EfficientDynamics, Orbit Grey, 7.5J x 17, 225/55 R17 tyres.



■ 18" light alloy Double-spoke style 567 wheels, Reflex Silver, 7.5J x 18 with 225/50 R18 tyres.<sup>2</sup>



□ 18" light alloy Y-spoke style 569 wheels, Orbit Grey, 7.5J x 18 with 225/50 R18 tyres.



□ 18" light alloy Y-spoke style 566 wheels, Ferric Grey, 7.5J x 18 with 225/50 R18 tyres.



□ 19" light alloy Y-spoke style 511 wheels, Orbit Grey, 8J x 19 with 225/45 R19 run-flat tyres.



■ 19" M light alloy Y-spoke style 722 M wheels, Orbit Grey, 8J x 19 with 225/45 R19 run-flat tyres.<sup>3</sup>



■ 19" M light alloy Double-spoke style 715 M wheels, Orbit Grey, 8J x 19 with 225/45 R19 run-flat tyres.<sup>4</sup>



□ 20" M light alloy Double-spoke style 717 M wheels, Orbit Grey matt, 8J x 20 with 225/40 R20 run-flat tyres.



□ 20" M light alloy Double-spoke style 716 M wheels, 8J x 20 with 225/45 run-flat tyres.

# GENUINE BMW ACCESSORIES.

■ Standard equipment □ Optional equipment ○ Accessories



○ Compact Rear Bike Carrier is light, yet stable and has a maximum load capacity of up to 60kg. It can be quickly and securely attached to the towbar and can accommodate two bicycles/e-bikes. Once folded, the cycle carrier can be stored in the luggage compartment tray away from spray and crash-safe.



○ The modern roof box in black with titanium silver side panels has a capacity of 420 litres and is compatible with all BMW roof rack systems. Due to the fact that it can be opened from both sides and has triple central locking on each side it is convenient to load and lock for theft protection.



○ The highly sensitive full-HD camera records automatically in order to capture events as seen from the vehicle, even when it is parked.



○ The Travel & Comfort System Universal Holder with Tablet Safety Case allows rear seat passengers to easily use their tablet within the car. Available for a range of tablets.



○ The high-quality 18" alloy wheels Y-spoke style 566 are designed in black and lend the vehicle a very sporty appearance. TPMS summer complete wheel with run-flat tyre, wheel size 7.5J x 18 with tyre size 225/50 R18 95W RSC.



○ The durable, anti-slip, water-resistant fitted mat with raised borders on all sides and a shapely design protects the luggage compartment from dirt and moisture. Finished in black with a black X2 inlay it perfectly complements the interior.

<sup>1</sup> Standard with SE models.  
<sup>2</sup> Standard with Sport models.  
<sup>3</sup> Standard with M Sport X models.  
<sup>4</sup> Standard with M Sport models.



**BMW X2 xDrive20d M Sport X model:**

BMW TwinPower Turbo four-cylinder diesel engine, 140kW (190hp), 20" M light alloy Double-spoke style 717M wheels, Galvanic Gold metallic paint, Sport seats in Micro Cloth/Alcantara Anthracite with Yellow highlight, Aluminium Hexagon Anthracite interior trim with Pearl Chrome finisher.

The models illustrated in this brochure show the equipment and configuration options (standard and optional) for vehicles produced by BMW AG for the German market. Alterations in standard and optional equipment and the configurations available for the different models, as described in this brochure, may occur after printing or according to the specific requirements of other markets. Your local BMW Retailer is available to provide further details. Subject to change in design and equipment. May 2018.

© BMW AG, Munich, Germany. Not to be reproduced wholly or in part without prior written permission of BMW AG, Munich.

411 002 175 21 1 2018 BM. Printed in Germany 2018.