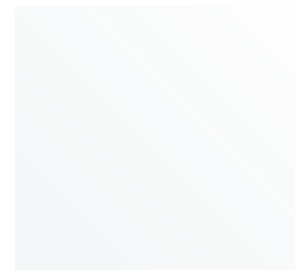




**White Opal (40)**  
Interior: Lt. Cashmere  
Gray  
Graphite



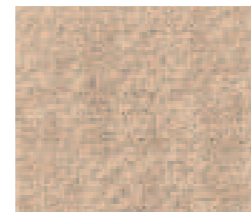
**White Gold Flash (93)<sup>(1)</sup>**  
Interior: Lt. Cashmere<sup>(2)</sup>  
Cashmere/  
Lt. Cashmere<sup>(3)</sup>



**Platinum Metallic (67)**  
Interior: Gray  
Graphite



**Cashmere Metallic (15)<sup>(4)</sup>**  
Interior: Lt. Cashmere<sup>(2)</sup>  
Cashmere/  
Lt. Cashmere<sup>(3)</sup>



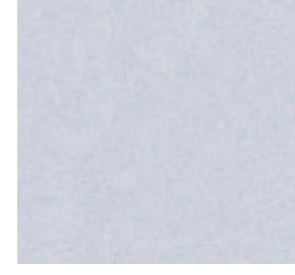
Lt. Cashmere Cloth



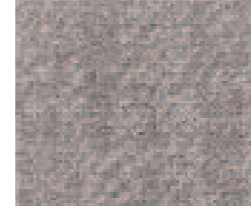
**Sagemist Metallic (23)**  
Interior: Lt. Cashmere



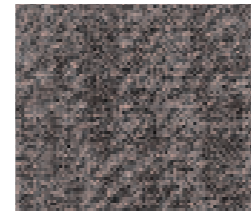
**Steelmist Metallic (88)**  
Interior: Lt. Cashmere  
Gray  
Graphite



**Glacier Blue Metallic (68)**  
Interior: Lt. Cashmere  
Gray  
Graphite



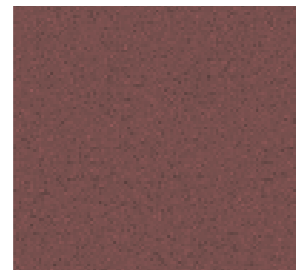
Gray Cloth



Graphite Cloth



**Ming Blue Metallic (25)**  
Interior: Lt. Cashmere  
Gray  
Graphite



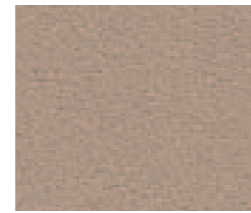
**Crimson Pearl Metallic (86)<sup>(1)</sup>**  
Interior: Lt. Cashmere<sup>(2)</sup>  
Cashmere/  
Lt. Cashmere<sup>(3)</sup>



**Dark Garnet Metallic (49)**  
Interior: Lt. Cashmere  
Gray  
Graphite



Lt. Cashmere  
Leather Trim



Cashmere  
Leather Trim<sup>(3)</sup>



**Black Onyx (41)**  
Interior: Lt. Cashmere  
Gray  
Graphite



Gray  
Leather Trim



Graphite  
Leather Trim



BUICK.COM / 800.4.A.BUICK

<sup>(1)</sup>Available on Celebration Edition only, at extra cost. <sup>(2)</sup>Availability limited to early model year on Celebration Edition. <sup>(3)</sup>Late availability on Celebration Edition. <sup>(4)</sup>Available on all models, including Celebration Edition.





## OUR COMMITMENT

Buick's commitment to craftsmanship can

be seen in the beauty of things apparent.

Like sensuously sculpted sheet metal. Brilliantly

burnished paint. Carefully tanned leather.

But it is also a part of things hidden – of the

beauty that lies within. Like suspensions

specifically tuned for comfort. Engines chosen

for smoothness. Controls placed so they fall

intuitively to hand. This ethic of craftsmanship

permeates every aspect of the creation of a

vehicle, from design to engineering to assembly.

It is a deeply held belief in a better way to

build. Now discover how that commitment

is offered in the 2005 LeSabre.

BUICK

Six-passenger comfort...full-size security...America's favorite



† PLATE 23 LeSabre Celebration Edition in available White Gold Flash.

While other cars keep trying to reinvent themselves, LeSabre keeps refining a very successful formula: Start with a design big enough to allow six adults to ride in comfort. Wrap it in beautifully sculpted sheet metal that will stay in style for years to come. Give it an interior with thick carpet and fine upholstery. Fill it with extra touches that help make driving a pleasure. Build

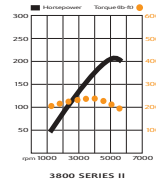
in a smooth, quiet ride and sure handling. Then assemble it with special care and craftsmanship, so it feels safe and secure for the whole family. That's the thinking that goes into every Buick LeSabre. All of which makes it easy to understand why LeSabre has been America's best-selling full-size car for twelve straight years.



LESABRE: *staying the course*



PLATE 23 LeSabre Limited leather-appointed interior in Light Cashmere.



3800 SERIES II

**A. 3.8L 3800 SERIES II V6 – THE BENCHMARK**

The 3800 Series II engine is a benchmark for pushrod-actuated, overhead valve V6 engines. It excels in packaging efficiency, smoothness and reliability. And, measured by output, efficiency\* and emissions, it equals or bests many overhead-cam engines while delivering impressive low-speed power and response.

\*EPA estimated mpg 20 city/29 hwy.

**B. 205 HP AND 230 LB-FT TORQUE**

This 3.8L V6 engine has earned a special place in automotive history. It was named one of "The 10 Best Engines of the 20th Century" by *Ward's AutoWorld* magazine. There are good reasons why it deserves such an honor. The 3800 Series II V6 generates the kind of potent energy LeSabre drivers demand to accelerate from a stoplight and down the road with confidence. Its overhead valve design assures impressive low rpm power and torque.

*Ward's AutoWorld* magazine, January 2000.

**C. LOW MAINTENANCE**

*10,000-mile oil change intervals.* Advances in lubricants have allowed engineers to extend the maximum recommended oil change interval on LeSabre up to 10,000 miles, when the GF-3 (Gasoline Fueled, Standard 3) motor oil is used. Buick still recommends an oil change at least once a year or when the Oil Life System signals an oil change is needed. *150,000-mile coolant.* The days of having to change your anti-freeze once a year are long gone. LeSabre comes with Dexcool® in the cooling system. It's designed to go up to 150,000 miles before it needs replacing. For the average driver, that's ten years away. *Up to 100,000-mile iridium spark plugs.* Iridium is a precious, silver-white metal (No. 77 on the periodic table) and one of the densest materials on earth. These platinum-tipped spark plugs have an iridium core that allows the plugs to fire with less voltage and improve combustion efficiency.

Maintenance needs vary with different uses and driving conditions. See the Owner's Manual for more information.

**D. OIL LIFE SYSTEM**

If you changed your oil only when it was really necessary, you'd save time and money, avoid inconvenience, and protect the environment. But how would you know when your oil was nearing the end of its useful life? The 3800 V6 engine has a powerful computer that is constantly recording engine speed, temperature, load or rpm variance, and the time of engine operation at any given load and temperature. With this information, the Oil Life System calculates oil degradation and recommends an oil change when one is actually needed.



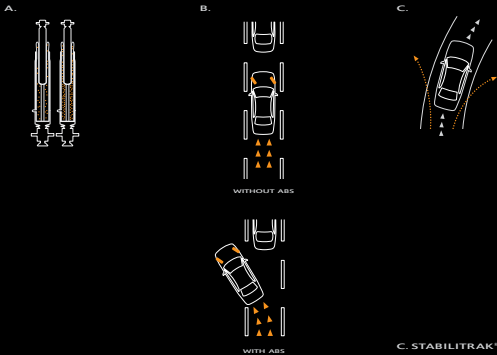
B.



C.



D.



**A. AUTOMATIC REAR LEVEL CONTROL**

This system adds an air bladder around each rear shock absorber which is inflated by an on-board compressor. It automatically helps level the rear when loads are carried or a trailer is connected, maintaining ride and handling.

**B. ANTI-LOCK BRAKING SYSTEM**

LeSabre's anti-lock braking system (ABS) uses four wheel-speed sensors, one at each wheel, to constantly monitor the speed at which each wheel is turning, and to send that data to the powertrain control module (PCM) computer. If, under braking conditions, the PCM detects that a wheel is about to lock-up, it takes control and modulates, or pulses the brake on and off faster than humanly possible. Pulsing the brakes allows the wheel to brake while continuing to rotate, so instead of sliding on the few square inches of tire tread in contact with the road, the driver is able to retain steering control to help steer the vehicle out of trouble.

**C. STABILITRAK**

Simply put, StabilTrak has the ability to sense the direction in which you want your LeSabre to be heading, and the power to help you stay on your intended course. This available chassis stability control system uses data from many sensors to work its magic. Yaw sensors, lateral accelerometers, steering wheel angle sensors, and wheel-speed sensors all send their data to the powertrain control module (PCM) and electronic control module (ECM) computers. These computers are constantly comparing the actual path the vehicle is taking with the path in which the driver is steering. If StabilTrak senses that the vehicle is not responding to steering input, it modulates individual front brakes or reduces power or both to help the driver maintain control and continue on the intended course. All this intervention can be so subtle you may never sense it's occurring. Keep in mind that while StabilTrak is ingenious, it cannot repeal the laws of physics. Drive carefully.

**D. TRACTION CONTROL**

When this available system detects that one front wheel is spinning much faster than the other wheels, it orders a series of interventions to help control the amount of power going to the spinning tire and thereby regain traction. First, it tries to brake the wheel. Then, the spark is retarded to all engine cylinders, resulting in less power being produced. Next, if necessary, it cuts off fuel to one, two, or up to three cylinders, which means a dramatic reduction in power. Finally, it can even shift the transmission out of first gear and into second gear, causing the drive wheels to rotate more slowly. When traction is restored through any of these intervention measures, full control is returned to the driver.

responsiveness



[ PLATE 7 ] Ventilated brake disc.



† PLATE # 3 Dynamic strength — LeSabre Limited. Shown with available equipment.



[ PLATE 10 ] Leather-appointed seating is available.



[ PLATE 12 ] LeSabre Limited chrome door handle accented by warm wood tones.



[ PLATE 9 ] Available XM<sup>®</sup> Satellite Radio – Over 120 channels of digital-quality sound, coast to coast. Available only in the 48 contiguous United States. Activation and service fees apply. Visit [gm.xmradio.com](http://gm.xmradio.com) for details.

[ PLATE 11 ] Dual-zone climate control is available for personalized comfort.

[ PLATE 13 ] Redundant switches allow the management of audio functions and cruise control directly from the steering wheel.



PLATE H 1 LeSabre Custom in Black Onyx. Shown with available equipment.



**A. PARABOLIC HEADLAMPS**

The parabolic reflector surface of LeSabre's headlamps has technological benefits. The light bulb is positioned so that the light radiating upward is reflected downward on the road across the optical axis. Optical patterns in the lens distribute the light with two different types of optical patterns: vertical cylindrical distribution, and prismatic elements at the height of the optical axis to focus the light on intended areas. This provides the driver with a source of bright, carefully patterned and focused light to more clearly see the road ahead.



**A.**

**B. MOISTURE-SENSING WIPERS**

LeSabre's available moisture-sensing wiper system is in a little black box that sits high on the inside of the windshield.

Inside is a light emitter, a lens and a light detector. When the system is on, the light emitter sends pulses of focused infrared light into the windshield. If no moisture is present on the windshield, all the beams of light will be reflected by the windshield, and bounce back into the light detector, which measures their intensity. But if moisture is present on the windshield, it alters the angle at which the beams diffuse, which reduces the intensity of light coming back into the light sensor. When this is detected, the system knows there is moisture on the windshield and activates the wipers.



**B.**

**C. ELECTROCHROMIC AUTOMATIC-DIMMING MIRRORS**

When glare is encountered on the road, LeSabre has a solution – the electrochromic automatic-dimming mirror. Electrochromics is the process of temporarily darkening materials by applying electricity. Each electrochromic rearview mirror is really two glass plates with a thin film of electrochromic gel sandwiched in between. Each mirror has a forward- and rearward-facing light sensor. When the forward-facing sensor detects a low ambient light level outside the vehicle, it activates the rearward-facing sensor, which immediately starts watching for bright lights to intrude. When the rear-facing sensor detects glare, it tells the mirror's micro-processor how much is present. Then the gel darkens, and the mirror dims, but only to the level required to reduce the reflected glare. When the glare is gone, the mirror returns to its undimmed state.

**D. DRIVER INFORMATION CENTER**

LeSabre's available Driver Information Center sends messages of 14 different conditions that may require attention – from a turn signal that's been on for a long time, to the detection of an attempted theft of the vehicle. The driver can request information on 11 different performance readings – from instantaneous fuel economy to a check of tire inflation. Two different drivers can also make eight different personal choice programming decisions. Two lines of LCD characters form the driver information display on the instrument panel.

security

A.



B.



C.



D.



#### D. ONSTAR®

A pioneering technology in the area of advanced in-vehicle safety and security, OnStar is your connection to 24-hour personal assistance whenever you need help on the road. By simply pressing the OnStar button, a highly-trained Advisor will use global positioning satellites to locate your vehicle and contact whatever help you need — from area police, ambulance and hospitals to the nearest tow truck or Buick dealership. If your air bags deploy in a collision, OnStar receives a signal and will contact you to see if you need assistance. Advisors can also work with police to help locate your vehicle if it's stolen, run remote diagnostics if your engine light comes on and send a signal to unlock your doors if you're locked out. A voice-activated cellular phone is also integrated into OnStar-equipped vehicles, offering hands-free calling. And with a more powerful signal, it often works in areas with limited cell phone reception.

OnStar services require vehicle electrical system and wireless service to be available and operating for features to function properly. OnStar uses existing emergency service providers as well as wireless and satellite technologies and is subject to their limitations. Please refer to specifications in the back for details. Stolen vehicle recovery success varies by condition.

Existing OnStar service contract and prepaid calling minutes required for Personal Calling feature. Personal Calling is the hands-free in-vehicle wireless phone mentioned previously. Available in most markets. OnStar voice recognition system may not work with all voices. Visit [onstar.com](http://onstar.com) for system limitations and details.

#### A. CATCHER'S MITT™ SEATS

Just as the well-formed pocket of a catcher's mitt cradles and holds a baseball, LeSabre's Catcher's Mitt front outboard seats are designed to cradle, hold and help protect occupants in a rear-end collision. Upon rear impact, the high-retention seat acts like a catcher's mitt — absorbing energy and pocketing the occupant's pelvis and lower back into the seat. During a slower-speed rear impact, the self-aligning head restraint moves forward and up in one smooth operation as the seat occupant moves rearward. This movement can lower the head and neck velocity of the occupant, with the potential to reduce the risk of injury.

#### B. FRONT-SEAT SIDE IMPACT AIR BAGS

LeSabre has a seat-mounted head and upper body side-impact air bag on the driver side. On the front passenger side, only upper body protection is provided by the air bag to minimize risk to an out of position child. Lateral acceleration sensors trigger inflation in less than 20 milliseconds to provide protection from a side-impact collision. Available on every LeSabre.

#### C. DUAL-STAGE FRONT AIR BAGS

In a lower-speed frontal collision, the air bags deploy at less than full level. In a higher-speed frontal collision, the air bags deploy at full level. The goal is to reduce the risk of an injury resulting from air bag deployment.

Air bag inflation can cause severe injury or death to anyone too close to the air bag when it deploys. Be sure every occupant is properly restrained.

# s a f e t y

[ PLATE 17 ] Available integrated turn signals in side mirrors — designed to help enhance safety during lane changes.



[ PLATE 16 ] LeSabre as steel and glass sculpture.

BUICK: meet the new family



Terraza, LeSabre, Rainier, Park Avenue, Rendezvous and LaCrosse. That's the new Buick family for 2005. And while there are new models, new features and new excitement in our lineup this year, you can be sure that one thing has not changed. That is Buick's commitment to bring you beautifully designed, carefully crafted vehicles that will deliver exceptional satisfaction with every mile you drive.

*Buick is the Official Car of the PGA TOUR. Tiger Woods is the most acclaimed player in the game today. That's why we're so proud to be partnered with him. After all, Tiger delivers power, style and finesse every time he hits the course. And Buick is ready to deliver those very same qualities every time you hit the road.*

PLATE 18 | Tiger Woods.

PLATES 19 – 21 | The all-new Terraza, LeSabre, Rainier.  
PLATES 22 – 23 | Park Avenue, Rendezvous.

PLATE 24 | The all-new LaCrosse.



15" Deluxe Wheelcover



15" Multi-Spoke Aluminum Wheel



16" Aluminum Wheel



16" Chrome-Plated Aluminum Wheel



16" Celebration Edition Wheel

INTERIOR FEATURES	Custom	Best Seller Package	Limited
<b>Air bags</b> — driver and right front passenger, frontal dual-stage inflation	S	S	S
— driver and right rear passenger, seat-mounted side-impact	A	A	S
<b>Air conditioning</b> — manual single-zone climate control	S	S	—
— automatic dual-zone climate control with rear-seat outlet	—	—	S
<b>Air filtration system</b>	—	A	A
<b>Arm rests</b> — front-seat storage with dual cup holders	S	S	S
— rear-seat fold-down with dual cup holders and pass-through to trunk	—	—	S
<b>Audio systems</b> — ETR AM/FM stereo with seek/scan, digital clock, RDS display, TheftLock <sup>®</sup> , CD and auto tone control; includes remote steering wheel controls	S	S	—
— ETR AM/FM stereo with seek/scan, digital clock, RDS display, TheftLock, cassette, CD and auto tone control; includes remote steering wheel controls	—	A	S
— extended range four-speaker system	S	—	—
— Concert Sound II six-speaker system	—	P	S
— diversity antenna integrated into the windshield and rear glass	S	S	S
— XM <sup>®</sup> Satellite Radio (activation and service fees apply; not available in Alaska or Hawaii)	—	A	A
<b>Auxiliary power outlet</b>	S	S	S
<b>Carpet savers</b> — front and rear	S	S	S
<b>Child seat anchors</b> — rear-seat taper and lower LATCH system for compatible child safety seats	S	S	S
<b>Child security door locks</b> — rear doors	S	S	S
<b>Convenience Plus features</b> — include electronic reminder tones for ignition key, headlamps, turn signals, parking brake "on"; delayed entry and exit lighting; theater dimming; battery rundown protection; lockout protection; delayed locking; PASS-Key <sup>®</sup> III passive theft-deterrent system and Twilight Sentinel <sup>®</sup> with daytime running lamps	S	S	S
<b>EyeCue<sup>®</sup> head-up windshield display</b>	—	—	A
<b>Driver Information Center</b> — includes trip computer, low oil, coolant, washer fluid and fuel reminders; oil life and tire inflation monitors	—	P	S
<b>Inside rearview mirror</b> — electrochromic-auto dimming	S	S	—
— electrochromic-auto dimming with compass	—	A	S
<b>Instrumentation</b> — full analog cluster with fuel, temperature and speedometer gauges	S	—	—
— full analog cluster with fuel, temperature, speedometer, tachometer, low fuel indicator and Driver Information Center	—	P	S

INTERIOR FEATURES (continued)	Custom	Best Seller Package	Limited
<b>OnStar<sup>®</sup></b> — includes one-year Safe & Sound service agreement*	S	S	S
<b>Overhead console</b> — includes front reading lamps on Custom; includes front and rear reading lamps on Limited	S	S	S
<b>Paint</b> — basecoat-clearcoat with anti-chip protection	S	S	S
<b>Personal Choice features</b> — include settings for door locks, perimeter lighting and remote keyless entry security feedback	S	S	S
— memory setting for driver seat adjustments, outside mirrors with passenger-side parallel park assist, climate control and radio presets	—	—	A
<b>Power door locks</b> — include lockout protection, delayed locking and memory feature	S	S	S
<b>Power windows</b> — include driver and front passenger express-down and passenger lockout feature	S	S	S
<b>Rear window defogger</b> — electric	S	S	S
<b>Remote keyless entry</b> — includes instant alarm, perimeter lighting, security feedback and individually programmable transmitters	S	S	S
<b>Safety belts</b> — front outboard seat-mounted lap/shoulder belts with center-seat lap/shoulder belts	S	S	S
— rear outboard and center-seat lap/shoulder belts	S	S	S
<b>Seats</b> — cloth	S	S	—
— leather-appointed (requires power 8-way right-front passenger seat on Best-Seller Package)	—	A	S
— reclining SSAS split-front bench, includes right-front passenger manual lumbar adjuster	S	S	S
— power 8-way driver	S	S	—
— power 10-way right-front passenger	—	A	—
— power 10-way driver and right-front passenger	—	—	S
— lumbar adjuster, driver-side manual	S	S	—
— lumbar adjuster, driver-side manual four-way power	—	—	S
— heated front outboard seats (requires leather-appointed seats, power passenger seat and auto-dimming rearview mirror)	—	A	S
<b>Steering wheel controls</b> — cruise and audio controls	S	S	S
— temperature control	—	—	S
<b>Storage bin and drawer</b> — center instrument panel	S	S	S
<b>Sunshades</b> — extendable	S	S	S
<b>Theft Deterrent System</b> — includes alarm, starter interrupt and central unlocking feature	—	P	S
<b>Tilt-Wheel</b> — adjustable steering column	S	S	S
<b>Trunk cargo net</b>	—	A	A
<b>Trunk lock release</b> — power activation with valid lockout	S	S	S
<b>Trunk release handle</b> — mounted inside the trunk	S	S	S
<b>Universal transmitter</b> — programmable three-function remote for garage door and more	—	—	S
<b>Visor vanity mirrors</b> — driver and front passenger, covered	S	S	S
— driver and front passenger, illuminated	—	P	S

EXTERIOR FEATURES	Custom	Best Seller Package	Limited
<b>Headlamps</b> — include daytime running lamps with Twilight Sentinel; include cornering lamps on Limited	S	S	S
<b>Mirrors</b> — dual fold-away power remote	S	S	S
— dual fold-away power remote with driver-side electrochromic auto-dimming feature	—	—	A
— heated	—	—	S
<b>Sunroof</b> — power sliding and tilting with sunshade	—	—	A
<b>Tires</b> — P215/70R15 all-season steel-belted radial	S	S	S
— P225/60R16 all-season steel-belted radial	—	A	A
— P225/60R16 touring steel-belted radial (included with Gran Touring Suspension Package)	—	A	A
<b>Wheels</b> — 15" steel wheel with deluxe wheelcover	S	—	—
— 16" aluminum	—	P	S
— 16" chrome	A	A	A
— 16" chrome-plated aluminum	—	A	A
<b>Windshield wipers</b> — GM3 <sup>®</sup> rear wiper w/wash delay	S	—	—
— moisture-sensing	—	A	S

MECHANICAL FEATURES	Custom	Best Seller Package	Limited
<b>Battery</b> — with rundown protection	S	S	S
<b>Brakes</b> — four-wheel anti-lock disc	S	S	S
<b>Engine block heater</b>	—	A	A
<b>StabilTrak<sup>®</sup></b> — automatic chassis control system	—	—	A
<b>Steering</b> — power-assisted rack-and-pinion	S	S	S
<b>Suspension</b> — four-wheel independent with automatic rear-leaf control	S	S	S
— Gran Touring Suspension Package, includes touring-tuned suspension components, 3.05 axle ratio, leather-appointed steering wheel, 16" brakes and 16" aluminum wheels with P225/60R16 tires	—	A	A
<b>Tire inflation monitor</b> — included in Driver Information Center	—	P	S
<b>Traction control</b> — full-range	—	P	S
<b>Transmission</b> — four-speed electronically controlled automatic with overdrive	S	S	S

**CELEBRATION EDITION**  
Standard Features — include all of the Limited standard features, plus the following: two-tone Cashmere/LI Cashmere leather-appointed seats (date availability); embroidered Buck Tri-shields on front seats and carpet savers; memory driver seat, outside rearview mirrors, climate control and radio presets; Black Cherry simulated wood trim accents, blacked-out grille; monochromatic fucles and rocker moldings; 16" chrome-plated wheels; integrated outside mirror LED turn signals with driver-side auto-dimming feature; StabilTrak and EyeCue head-up windshield display.

Available Features — White Gold Flash and Crimson Pearl paint, XM Satellite Radio, Gran Touring Suspension Package, power sunroof, engine block heater.

\*OnStar requires vehicle electrical system and wireless service to be available and operating for features to function properly. OnStar relies on existing emergency services providers as well as wireless and satellite technologies and is subject to their limitations. The U.S. Federal Communications Commission (FCC) rules that wireless carriers will no longer be required to support the analog wireless network after February 16, 2008. As of January 1, 2008, OnStar plans to offer service only through equipment that operates on the digital network, which may require the purchase of a system upgrade. Call 1-888-4ONSTAR (1-888-666-7827), see your OnStar Owner's Guide, or visit onstar.com for system information and details.

ENGINE	Custom	Best Seller Package	Limited
Type	3.8-liter 3800 Series II V6		
Horsepower	205 @ 5200 rpm		
Torque	230 @ 4000 rpm		
EPA estimated mpg, city/hwy	20/29		

CAPACITIES	Custom	Best Seller Package	Limited
Trunk (cu. ft.) <sup>†</sup>	18.0		
Fuel tank (approx. gal.)	18		
Base curb weight	3,567		
— Limited	3,591		

EXTERIOR DIMENSIONS (inches)	front/rear
Length	200.0
Width	73.5
Height	57.0
Wheelbase	112.2
Front tread	62.3
Rear tread	62.3

INTERIOR DIMENSIONS (inches)	front/rear
— Legroom	42.4/39.9
— Headroom	38.8/37.8
— GM3 <sup>®</sup> rear wiper w/wash delay	59.1/58.7
— Shoulder room	56.1/56.6
— Hip room	56.1/56.6

\*Cargo and load capacity limited by weight and distribution.

**IMPORTANT WORDS ABOUT THIS BROCHURE.**

We have tried to make this brochure comprehensive and factual. We reserve the right, however, to make changes at any time, without notice, in prices, colors, materials, equipment specifications, models, and availability. Since some information may have been updated since the time of printing, please check with your Buick dealer for complete details. Buick reserves the right to lengthen or shorten the model year for any product for any reason, or to start and end model years at different times.

**New Vehicle Limited Warranty.** This warranty is for GM vehicles registered in the USA. See your Buick dealer for terms and conditions.

Covered for 3 years/36,000 miles (whichever comes first): The complete vehicle; Tires; Towing to your nearest Buick dealership; Cosmetic corrosion resulting from defects; Repairs made to correct any vehicle defect. No charge for most warranty repairs.

Covered for 4 years/50,000 miles (whichever comes first): Rust-through corrosion.

**Corrosion Protection.** Buick vehicles are designed and built to resist corrosion. All body and sheet metal components are warranted against rust-through corrosion for six years or 100,000 miles, whichever comes first. Application of additional rust-inhibiting materials is not required under the corrosion coverage and none is recommended. See your Buick dealer for terms of this limited warranty.

**Updated Service Information.** Buick dealers receive useful service bulletins about Buick products. You may purchase them from Helix Incorporated by calling 1-800-551-4123 or by visiting [www.helixinc.com](http://www.helixinc.com).

**Assembly.** Buick vehicles and their components are assembled or produced by different operating units of General Motors, its subsidiaries or suppliers to GM worldwide. We sometimes find it necessary to produce Buick vehicles with different or differently sourced components than originally scheduled. Since some options may be unavailable when your vehicle is assembled, we suggest that you verify that your vehicle includes the equipment you ordered or, if there are changes, that they are acceptable to you.

**Engines.** Buick products are equipped with engines produced by GM Powertrain or other suppliers to GM worldwide. The engines in Buick products may also be used in other GM makes and models.

**A Note About Child Safety.** Always use safety belts and proper child restraints, even in vehicles equipped with air bags. Children are safer when properly secured in a rear seat. Never place a rear facing infant restraint in the front seat of any vehicle equipped with an active air bag. See your vehicle Owner's Manual and child safety seat instructions for more information.

**ENHANCE YOUR OWNERSHIP EXPERIENCE.** The Owner Center at MyGMLink is a free online service that helps you make the most of your vehicle ownership.

- Sign up for e-mail reminders about service visits.
- Keep an online history of services performed.
- Receive your Owner's Manual, warranty, and more, online.
- Receive the recall notices that apply only to your vehicle.
- Watch do-it-yourself videos and much more.

Register today at [MYGMLink.com](http://MYGMLink.com)!



©2004 General Motors Corporation. All rights reserved.  
Printed on recyclable paper from a renewable source.  
Item No. 05-LE-006 Printed in U.S.A. 220h