 [chevy.com](http://chevy.com)



**CHEVROLET**

11CHEEQUCAT01

2011 Chevrolet Equinox 









**A Consumers Digest “Best Buy.”<sup>1</sup>** The 2010 Equinox was named a “Best Buy” by *Consumers Digest*.

**32 MPG hwy. and up to 600 hwy. miles between fill-ups.** That’s better than Honda CR-V, Toyota RAV4 and even Ford Escape Hybrid.<sup>2</sup>

Equinox LTZ in Silver Ice Metallic. <sup>1</sup>The Best Buy Seal is a registered trademark of Consumers Digest Communications, LLC, used under license. <sup>2</sup>EPA est. MPG hwy. (2WD): 2010 Honda CR-V 28, 2010 Toyota RAV4 28, 2011 Ford Escape Hybrid 31, Equinox 32. <sup>3</sup>Whichever comes first. See dealer for details.



**Incredible comfort for five.**

The rear seat offers the most legroom in its class – more than Honda CR-V, Toyota RAV4 and Ford Escape.

**100,000 mile/5-year<sup>3</sup> Transferable Powertrain Limited Warranty to guarantee the quality.** With 100,000 mile/5-year<sup>3</sup> Roadside Assistance and Courtesy Transportation Programs to guarantee the quality.



*2010 Interior of the Year<sup>1</sup>*

WARDSAUTO.COM, 2010

Equinox LTZ interior in Brownstone shown with available features. <sup>1</sup> Popular-Priced truck under \$39,999 category.











*“The interior of the Equinox is even more head-turning than the exterior...two-tone color schemes and excellent fit and finish provide an added dose of style.”*

MOTORWEEK



**Style and comfort.** The difference is in the details. Color-contrasted stitching catches your eye, and side bolsters comfortably fit your body.



**Acoustic laminated glass.**

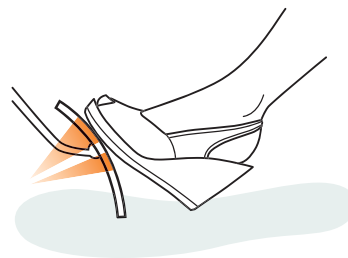
Every Equinox features laminated windshield and front side window glass that contributes to the quiet interior. Triple door seals and liquid-applied sound dampener are also used.



**Ambient lighting.**

Ice blue lighting is placed throughout the cabin in every model, including in the cup holders, to make them easier to find.

**The curved pedal.** With its unique shape, it can accommodate many different shoe sizes and heights. This helps ensure your foot is securely on the pedal.



A 2010 "Top Safety Pick"

THE INSURANCE INSTITUTE  
FOR HIGHWAY SAFETY<sup>1</sup>



**1. StabiliTrak Electronic Stability Control System with Traction Control.** This standard feature is designed to improve vehicle stability on most road surfaces, especially during emergency maneuvers.

**2. Safety Cage Construction.** Made of reinforced steel with vertical pillars, side-door beams and a roof, the safety cage is designed to help preserve occupant space in a crash.

**3. Four-Wheel Antilock Brakes.** This important standard feature helps maintain steering control by reducing wheel lockup during hard braking on most slippery surfaces. This feature also includes Electronic Brake Force Distribution that helps balance brake force between the front and rear under heavy braking.

**4. Six Air Bags<sup>2</sup>** Every Equinox comes standard with dual-stage frontal air bags, side-impact air bags and head-curtain side-impact air bags for both front and rear.

**5. Rollover Mitigation.** This technology automatically applies the brakes to individual wheels and reduces the driving torque to help prevent rollover of the vehicle.

**6. Protected and Connected with OnStar<sup>®3</sup> Including Automatic Crash Response.** In a collision, vehicle sensors can automatically alert an OnStar Advisor and relay critical crash details. The Advisor is immediately connected into your vehicle and can request that emergency help be sent to your exact GPS location, even if you can't respond. Standard for the first six months.

**7. LATCH System.** LATCH (Lower Anchors and Top tethers for CHildren) system often makes it easier to install child safety seats.





*"The 2010 Equinox is a classy, well-designed compact SUV that actually gets better [highway] mileage than such rivals as the Honda CR-V, Toyota RAV4, Ford Escape and Kia Sorento. That's right: It's a Chevy that beats even the Asian competition in fuel economy."*

BLOOMBERG BUSINESSWEEK



Fuel Comparisons	EPA est. MPG hwy.	Max. hwy. driving range (miles)
<b>2011 Chevrolet Equinox</b>	<b>32</b>	<b>600</b>
2010 Honda CR-V	28	428
2010 Toyota RAV4	28	445
2011 Ford Escape Hybrid	31	468
2011 Kia Sorento	29	522



**Go farther – up to 600 hwy. miles per tank.** The ECO button with the 2.4L engine allows you to switch to a fuel-saving mode, which can increase your vehicle's fuel economy when compared to normal operation.



Full open  
Garage



*“...Equinox has the first programmable power liftgate available for a small crossover. Besides full open, it can be set for a lower opening to avoid contact with a garage ceiling.”*

MOTORWEEK

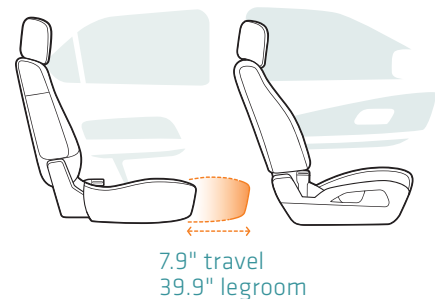


**10 storage areas.** Equinox has a number of storage areas and a deep center console to store a laptop or purse. The compartments behind the rear-seat doors are easy to reach whether you're a grown-up or a kid. And an available cargo management system helps keep bags and other items in place.



**Reclining 60/40 split-folding rear seat.** It also folds down to give you flexibility when storing cargo and personal items.


**MultiFlex sliding rear seat.** This innovative feature offers the most rear-seat legroom in its class and travels nearly eight inches forward and back. That's up to 39.9 inches of legroom for back-seat passengers.




Watch a video to learn more about the adaptable MultiFlex rear seat at [chevy.com/equinox](https://chevy.com/equinox). 




XM NavTraffic<sup>1</sup> (available on select models) works with the navigation system to show live traffic updates.

 **XM NavTraffic<sup>1</sup>** This available feature shows live traffic updates when they're needed most – while you're driving. It can alert you to construction and accidents to help keep you on time.

 **Bluetooth<sup>®</sup> wireless technology<sup>2</sup>** This available feature for select phones lets you keep your hands on the wheel while answering and ending phone calls.

**Pioneer 250-watt premium sound system.** Enjoy concert-like sound through eight speakers customized for the interior. Available on select models.

 **USB port.<sup>3</sup>** Connect your MP3 player or a music-loaded flash drive to the audio system. Standard on LT and LTZ models.

**Rearview Camera System.** Intuitively positioned in the rearview mirror,<sup>4</sup> the system is designed to help you see certain stationary objects while traveling in Reverse at low speeds. Available on select models.

**Pause and Play Radio.** Integrated into the available navigation radio, it gives you the ability to pause a live radio broadcast, record up to 20 minutes of it to the radio's hard drive, then play it back later.



**Protected and Connected with OnStar.**

Experience the safe, simple way to stay connected on the road. OnStar<sup>5</sup> is now standard on most models with the Directions & Connections<sup>®</sup> Plan for the first six months.



**Automatic Crash Response.**

Built-in sensors can automatically alert OnStar for help. Even if you can't respond, an Advisor can request that emergency help be sent to your exact GPS location.



**Emergency Services.**

One push of the red emergency button gives you a priority connection to an OnStar Advisor who can contact emergency services and direct them to your exact location.



**Security Services.**

Stolen Vehicle Assistance, Remote Door Unlock and Remote Horn and Lights are among these services.



**Turn-by-Turn Navigation.**

When you're not exactly sure how to get there, simply push the blue OnStar button and get voice-guided directions downloaded to your vehicle.



**OnStar Savings.**

We can help lower the cost of vehicle ownership with insurance discounts and other ways to save. To learn more, go to [onstar.com/savings](http://onstar.com/savings).



**Vehicle Diagnostics.**

Receive monthly emails on the operating status of your key vehicle systems.



**Hands-Free Calling.**

Make and receive voice-activated calls while keeping your eyes on the road and your hands on the wheel.

**Rear-Seat Entertainment System.**

Available dual seatback-mounted DVD displays means one passenger can watch a movie on one display, while another can play their video game on the other display.




**100,000 mile/5-year<sup>1</sup> Transferable Powertrain Limited Warranty.** That's 40,000 more miles than Toyota or Honda offers. And you have our Roadside Assistance and Courtesy Transportation Programs to guarantee the quality.

**24-Hour Roadside Assistance.** Chevrolet offers the 24-Hour Roadside Assistance Program for a period of 100,000 miles or 5 years.<sup>1</sup>

**Courtesy Transportation.** Provides alternate transportation and/or reimbursement of certain transportation expenses and warranty repairs for a period of 100,000 miles or 5 years.<sup>1</sup>

See how Equinox compares.

	2011 CHEVROLET EQUINOX	2010 Honda CR-V	2010 Toyota RAV4	2011 Ford Escape Hybrid
<b>EPA Estimated Highway Fuel Economy</b>	<b>32 MPG</b>	28 MPG	28 MPG	31 MPG
<b>Maximum Hwy. Driving Range</b>	<b>600 miles</b>	428 miles	445 miles	468 miles
<b>2010 Top Safety Pick by IIHS<sup>2</sup></b>	✓	–	–	–
<b>Powertrain Warranty<sup>1</sup></b>	<b>100,000 mile 5-year</b>	60,000 mile 5-year	60,000 mile 5-year	60,000 mile 5-year
 <b>OnStar<sup>®3</sup> with Built-In Automatic Crash Response</b>	✓ standard first six months	–	–	–
<b>Rear-Seat Legroom</b>	<b>39.9 inches</b>	38.5 inches	38.3 inches	35.6 inches
<b>Available Power Liftgate</b>	✓	–	–	–

 For more detailed warranty info, visit [chevy.com/equinox](http://chevy.com/equinox).



*"If you're in the market for a small SUV – and there are a million of you a year who are – this new Equinox should definitely be on your shopping list."*

AutoWeek



**Equinox LTZ in Silver Ice Metallic.** <sup>1</sup> Whichever comes first. See dealer for limited warranty details. <sup>2</sup> Based on 2010 Insurance Institute for Highway Safety (IIHS) testing. <sup>3</sup> Visit [onstar.com](http://onstar.com) for details and system limitations. OnStar acts as a link to existing emergency service providers.



Silver Ice Metallic

Twilight Blue Metallic<sup>1</sup>

Gold Mist Metallic

Black Granite Metallic<sup>1,2</sup>

### Wheels.

**1.** 19" chrome-clad aluminum wheel available on LTZ.<sup>3</sup>

**2.** 18" machined-aluminum wheel available on 1LT,<sup>3</sup> 2LT<sup>4</sup> and LTZ.<sup>4</sup>

**3.** 17" aluminum wheel standard on all models.

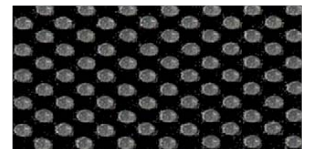
### Fabrics.



**1.** Light Titanium Color Cloth



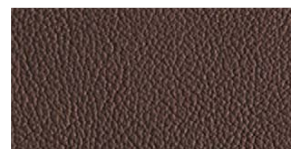
**2.** Light Titanium Color Premium Cloth



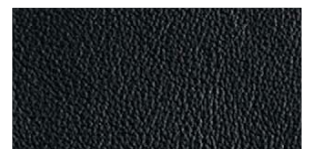
**3.** Jet Black Premium Cloth



**4.** Light Titanium Color Leather Appointments



**5.** Brownstone Leather Appointments



**6.** Jet Black Leather Appointments



Summit White

Cyber Gray Metallic

Cardinal Red Metallic<sup>1</sup>

Black

Mocha Steel Metallic<sup>1</sup>



**Chevrolet Accessories.**



Protection Package includes all-weather floor mats and splash guards



19" chrome wheel



Chrome outside mirrors



Chrome door handles

<sup>1</sup> LT and LTZ only. <sup>2</sup> Extra-cost color. <sup>3</sup> Requires available V6 engine. <sup>4</sup> Required with available V6 engine. Available with 4-cylinder engine.



# Equinox buyer's guide. S = Standard O = Optional - = Not Available

## Exterior LS 1LT 2LT LTZ

Bumpers: front and rear body-color with Charcoal lowers	S	S	S	-
Bumpers: front and rear body-color with bright front and rear lowers	-	-	O <sup>1</sup>	S
Chrome Appearance Package: body-color bumpers with bright front and rear lowers; bright chrome door handles; chrome, heated, power, manual-folding mirrors; roof rack side rails with bright chrome inserts; and Ultrasonic Rear Parking Assist	-	-	O	S
Foglamps: front halogen	-	-	S	S
Headlamps: halogen, uplevel projector-style	-	-	-	S
Liftgate: rear, manual with fixed glass	S	S	S	-
Liftgate: rear, power-programmable with fixed glass	-	-	O	S
Mirrors, outside: black, manual-folding	S	-	-	-
Mirrors, outside: body-color, power, heated, manual-folding	-	S	S	S <sup>2</sup>
Roof rack center rails	-	O <sup>3</sup>	O <sup>3</sup>	S
Roof rack side rails	-	S	S	S

## Engines/Chassis

Engine: 2.4L ECOTEC DOHC Direct Injection 182-hp 4-cylinder	S	S	S	S
Engine: 3.0L DOHC Direct Injection 264-hp V6 with E85 FlexFuel capability <sup>4</sup>	-	O	O	O
Hill Start Assist: helps reduce rollback on an incline until vehicle begins moving forward	S	S	S	S
Steering: power, variable-assist, electric	S	S	S	S
Steering: power, variable-assist, hydraulic	-	O <sup>5</sup>	O <sup>5</sup>	O <sup>5</sup>
Suspension: front, independent struts	S	S	S	S
Suspension: rear, multilink independent, with hydraulic rear trailing arm links and stabilizer bar	S	S	S	S
Tire Pressure Monitor (excludes spare tire)	S	S	S	S
Trailer Package: includes receiver hitch and 4-wire connection	-	-	O <sup>5</sup>	O <sup>5</sup>
Transmission: six-speed automatic with overdrive	S	S	S	S

## Interior

Air conditioning: manual climate control	S	S	-	-
Air conditioning: automatic climate control	-	-	S	S
Bluetooth <sup>®</sup> Package: Bluetooth wireless technology <sup>6</sup> for select phones and leather-wrapped steering wheel with mounted audio controls	O	S	S	S
Cargo Management Package: rear cargo security cover, cargo convenience net and roof rack center rails	-	O	O	S
Door locks: power, programmable	S	S	S	S
Driver Convenience Package: includes eight-way power driver-seat adjuster, rearview camera system and Remote Vehicle Starter System	-	O	S	S
Driver Information Center (includes compass)	S	S	S	S
Floor mats: carpeted, front and rear	S	S	S	S
Instrumentation: speedometer, trip odometer, engine temperature, fuel level and tachometer	S	S	S	S
Memory: settings for driver seat and exterior mirrors	-	-	-	S
Mirror, inside rearview: — manual day/night — auto-dimming	S -	S O <sup>7</sup>	- S	- S
Rearview camera system	-	O <sup>7</sup>	S	S
Steering wheel: tilt and telescoping	S	S	S	S
Sunroof: power, tilt/sliding, with Express-Open feature	-	O	O	O
Windows: power with Express-Down feature (all windows) and passenger lockout	S	S	S	S

## Safety & Security LS 1LT 2LT LTZ

Air bags: <sup>8</sup> driver and front passenger, dual-stage, frontal with Passenger Sensing System; thorax side-impact, seat-mounted, driver and front passenger; head-curtain, side-impact for front and rear outboard seating positions	S	S	S	S
All-wheel drive	O	O	O	O
Brakes: four-wheel antilock disc (ABS)	S	S	S	S
Daytime Running Lamps with Automatic Exterior Lamp Control	S	S	S	S
LATCH (Lower Anchors and Top tethers for Children) system	S	S	S	S
OnStar: <sup>9</sup> Directions & Connections Plan (standard for the first six months), includes Automatic Crash Response	S	S	S	S
Power rear door child safety locks	S	S	S	S
StabiliTrak Electronic Stability Control System with Traction Control and rollover mitigation	S	S	S	S
Theft-deterrent system: content-theft alarm	S	S	S	S

## Audio Systems

NOTE: All Equinox stereo audio systems include an Electronically Tuned Receiver (ETR) and an AM/FM stereo with seek-scan, XM Radio <sup>10</sup> with three trial months, a digital clock, an auxiliary audio input jack for iPod <sup>®</sup> /MP3 player and Radio Data System (RDS) <sup>11</sup> technology.				
AM/FM stereo, XM Radio <sup>10</sup> with three trial months, CD/MP3 player and six-speaker system <sup>12</sup>	S	S	S	S
Audio system with Rear-Seat Entertainment: AM/FM stereo, XM Radio <sup>10</sup> CD/DVD player, MP3/WMA playback capability, DVD audio and video playback capability, 2 GB flash memory, dual rear eight-inch-diagonal displays, video jacks on each unit, remote control and two wireless headsets	-	-	O	O
Audio system with Navigation <sup>13</sup> /Infotainment: AM/FM stereo, XM Radio <sup>10</sup> XM NavTraffic <sup>14</sup> CD player with MP3/WMA playback capability, seven-inch-diagonal touch-screen Color Interface Display (CID), enhanced DVD-based navigation with voice recognition and 40 GB hard drive	-	-	O	O
Audio system with Navigation <sup>13</sup> /Infotainment and Rear Seat Entertainment: AM/FM stereo with CD/DVD player, XM Radio <sup>10</sup> XM NavTraffic <sup>14</sup> MP3/WMA playback capability, seven-inch-diagonal touch-screen CID, enhanced DVD-based navigation with voice recognition, 40 GB hard drive, dual rear eight-inch-diagonal displays, video jacks on each unit, remote control and two wireless headsets	-	-	O	O
Pioneer <sup>®</sup> premium 250-watt eight-speaker system: includes subwoofer and amplifier	-	O <sup>5</sup>	S	S
USB port <sup>15</sup> connectivity	-	S	S	S
XM Radio <sup>10</sup> with three trial months	S	S	S	S

## Seating

Front, driver, power lumbar and power height adjuster	S	S	-	-
Front, driver, eight-way power: includes power fore/aft, up/down, tilt cushion, recline and lumbar	-	O	S	S
Multi-Flex sliding rear seat with 60/40 split-folding seatback and three-position recline	S	S	S	S
Front and rear, leather-appointed with perforated leather inserts	-	-	O	S
Heated seats: driver and front passenger	-	-	S	S

## Wheels/Tires

Wheels: — 17-inch aluminum — 18-inch machined-aluminum — 19-inch chrome-clad aluminum	S - -	S O <sup>5</sup> -	S O -	S O O <sup>5</sup>
Tires: — NEW P235/60R-17 (FWD only, interim availability) — all-season blackwall P225/65R-17 — all-season blackwall P235/55R-18 — all-season blackwall P235/55R-19	S S - -	- O S -	- S O -	- S O O

# Select vehicle features.

## Equinox LS

- 2.4L ECOTEC DOHC Direct Injection four-cylinder
- 17" aluminum wheels
- StabiliTrak Electronic Stability Control System with Traction Control and rollover mitigation
- Electric variable-assist power steering with tilt and telescoping steering wheel
- Four-wheel antilock disc brakes
- Black, power, manual-folding outside mirrors
- MultiFlex sliding rear seat with 60/40 split-folding seatback and three-position recline
- Six air bags<sup>3</sup> with Passenger Sensing System
- Air conditioning with manual controls
- Carpeted front and rear floor mats
- Compass display

## Equinox 1LT

*In addition to or replacing LS features, 1LT includes:*

- Premium Cloth seats
- Deep-tinted glass
- USB port<sup>15</sup> connectivity
- Bluetooth wireless technology<sup>6</sup> for select phones
- Leather-wrapped steering wheel with mounted audio controls
- Roof rack side rails
- Body-color, power, heated, manual-folding outside mirrors

## Equinox 2LT

*In addition to or replacing 1LT features, 2LT includes:*

- Premium Cloth seats with heated front seats
- Driver seat with eight-way power adjuster
- Pioneer premium 250-watt eight-speaker sound system
- Auto-dimming inside rearview mirror
- Rearview camera system
- Air conditioning with automatic climate control
- Foglamps

## Equinox LTZ

*In addition to or replacing 2LT features, LTZ includes:*

- Perforated leather-appointed seats with heated front seats
- Memory settings for driver seat and exterior mirrors
- Body-color bumpers with bright front and rear lowers
- Chrome Appearance Package
- Power-programmable liftgate
- Cargo Management Package: rear cargo security cover, cargo convenience net and roof rack center rails
- Ultrasonic Rear Parking Assist

## Dimensions

A = 62.5"      D = 187.8"  
B = 72.5"      E = 69.3" with roof rack  
C = 112.5"     F = 61.8"



<sup>1</sup> Requires available Chrome Appearance Package. <sup>2</sup> Chrome on LTZ. <sup>3</sup> Requires available Cargo Management Package. <sup>4</sup> Requires available 18- or 19-inch aluminum wheels and Pioneer premium eight-speaker system. Not available in CA, CT, ME, MD, MA, NJ, NM, NY, OR, PA, RI, VT and WA. E85 is a combination of 85% ethanol and 15% gasoline. Go to [chevy.com/biofuels](http://chevy.com/biofuels) to see if there is an E85 fuel station near you. <sup>5</sup> Requires available V6 engine. <sup>6</sup> Go to [gm.com/bluetooth](http://gm.com/bluetooth) to find out which phones are compatible with the vehicle. <sup>7</sup> Requires available Driver Convenience Package. <sup>8</sup> Always use safety belts and the correct restraint for your child's age and size. Even in vehicles equipped with the Passenger Sensing System, children are safer when properly secured in a rear seat in the appropriate infant, child or booster seat. Never place a rear-facing infant restraint in the front seat of any vehicle equipped with a passenger air bag. See the Owner's Manual and child safety seat instructions for more safety information. <sup>9</sup> Visit [onstar.com](http://onstar.com) for coverage map, details and system limitations. Services vary by model and conditions. OnStar acts as a link to existing emergency service providers. <sup>10</sup> Requires a subscription sold separately by XM after trial period. Available only in the 48 contiguous United States and District of Columbia. Visit [gm.xmradio.com](http://gm.xmradio.com) for details. <sup>11</sup> RDS functions only where stations broadcast RDS information. <sup>12</sup> Eight speakers included on 2LT and LTZ. <sup>13</sup> Map coverage excludes portions of Canada, Puerto Rico and the Virgin Islands. <sup>14</sup> Requires a subscription sold separately by XM after trial period. Available only in select markets. For more information, see [xmradio.com/navtraffic](http://xmradio.com/navtraffic). <sup>15</sup> Not compatible with all devices.

# Important information.

## **100,000 MILE/5-YEAR TRANSFERABLE POWERTRAIN LIMITED WARRANTY.**

Every 2011 Chevy passenger car, light-duty truck, SUV and crossover comes with a 100,000 mile/5-year (whichever comes first) transferable Powertrain Limited Warranty. Plus, you get 100,000 miles/5-years (whichever comes first) of the 24/7 Roadside Assistance Program and the Courtesy Transportation Program and much more. See dealer for details.

**NEW VEHICLE LIMITED WARRANTY.** GM vehicles registered in the U.S.A. are covered for 36,000 miles/3 years (whichever comes first). The complete vehicle is covered, including tires, towing to your nearest Chevrolet dealership and cosmetic corrosion resulting from defects. Repairs will be made to correct any vehicle defect, and most warranty repairs will be made at no charge. In addition, rust-through corrosion will be covered for 100,000 miles/6 years (whichever comes first). See dealer for details.

**ENGINES.** Chevrolet products are equipped with engines produced by GM Powertrain or other suppliers to GM worldwide. The engines in Chevrolet products may also be used in other GM makes and models.

**ASSEMBLY.** Chevrolet vehicles and their components are assembled or produced by different operating units of General Motors, its subsidiaries or suppliers to GM worldwide. We sometimes find it necessary to produce Chevrolet vehicles with different or differently sourced components than originally scheduled. Since some options may be unavailable when your vehicle is assembled, we suggest you verify that your vehicle includes the equipment you ordered and that, if there were changes, they are acceptable to you.

**ONSTAR.** OnStar services require vehicle electrical system (including battery), wireless service and GPS satellite signals to be available and operating for features to function properly. OnStar acts as a link to existing emergency service providers. Subscription Service Agreement required. Call 1-888-4ONSTAR (1-888-466-7827) or visit [onstar.com](http://onstar.com) for OnStar Terms and Conditions, Privacy Statement, and details and system limitations.

**A NOTE ABOUT CHILD SAFETY.** Always use safety belts and the correct restraint for your child's age and size. Even in vehicles equipped with the Passenger Sensing System, children are safer when properly secured in a rear seat in the appropriate infant, child or booster seat. Never place a rear-facing infant restraint in the front seat of any vehicle equipped with a passenger air bag. See the Owner's Manual and child safety seat instructions for more safety information.

**IMPORTANT WORDS ABOUT THIS CATALOG.** We have tried to make this catalog comprehensive and factual. We reserve the right, however, to make changes at any time, without notice, in prices, colors, materials, equipment, specifications, models and availability. Specifications, dimensions, measurements, ratings and other numbers in this catalog and other printed materials provided at the dealership or affixed to vehicles are approximates based upon design and engineering drawings, prototypes and laboratory tests. Your vehicle may differ due to variations in manufacture and equipment. Since some information may have been updated since the time of printing, please check with your Chevrolet dealer for complete details. Chevrolet reserves the right to lengthen or shorten the model year for any product for any reason or to start and end model years at different times. Certain vehicle features may lose their usefulness over time due to obsolescence from technological changes. Unless otherwise noted, all claims based on GM Compact Crossover segment and latest available competitive information. Excludes other GM vehicles.

**FLEET ORDERS.** Some standard content may be deleted with fleet orders. See dealer for details.

At Chevrolet, giving you a completely satisfying ownership experience is our top priority. That's why if you ever need assistance, feel free to contact us at these web sites or phone numbers.

**CHEVY.COM.** Offers shopping tools such as Build and Price, Find a Vehicle, Request Info, Email Sign-Up, Compare Vehicles, Financial Tools...and much more.

**24-HOUR ROADSIDE ASSISTANCE PROGRAM (1-800-CHEV-USA).** The Chevrolet Roadside Assistance Program provides you with the following services for 100,000 miles or 5 years (whichever comes first): Emergency Towing (to closest Chevy dealer from a legal roadway), Lockout Service (keys locked inside vehicle), Flat Tire Changes (spare installed), Fuel Delivery (\$5 worth of fuel delivered on the road) and Jump Starts (at home or on the road). For specific terms and conditions, please contact your Chevrolet Roadside Assistance advisor at 1-800-243-8872. Some services may incur costs.

**COURTESY TRANSPORTATION PROGRAM.** Ask your Chevrolet dealer for Courtesy Transportation if you leave your vehicle for extended repairs under the New Vehicle Limited Warranty or Powertrain Limited Warranty. Ask if you qualify for expense reimbursement and/or vehicle rental. Services vary by dealer.



Chevrolet Malibu



Chevrolet Traverse

**CHEVROLET CUSTOMER ASSISTANCE CENTER (1-800-222-1020).**

Talk directly to customer relationship managers who can handle any inquiries related to vehicle operation, warranty coverages, or product or service concerns you may have. Please refer to your Owner's Manual for Customer Assistance information.

**CHEVY.COM/SAFETY.** Chevrolet is committed to keeping you and your family safe – from the start of your journey to your destination. That's why every Chevrolet is designed with a comprehensive list of safety and security features to help give you peace of mind.

**GMMOBILITY.COM (1-800-323-9935).** GM Mobility offers financial assistance for eligible adaptive equipment to make automotive travel easier for persons with disabilities or special transportation needs. To learn more about special GM Mobility offers, visit [gmmobility.com](http://gmmobility.com).

**CHEVROLET OWNER CENTER (GMOWNERCENTER.COM/CHEVY).** Register your vehicle with the Chevrolet Owner Center, and receive benefits such as online access to your vehicle Owner's Manual, maintenance schedule reminders, service history tracking, warranty and service information, safety information, special offers and privileges, and news and events.

**MARKETING AND INCENTIVES (CHEVY.COM/SPECIALOFFERS).** Call 1-800-950-CHEV (1-800-950-2438) or visit [chevy.com/specialoffers](http://chevy.com/specialoffers) for new product, current incentive and marketing program information.

**GMCARDMEMBERSERVICES.COM.** Did you know about the family of reward credit cards that can help you get a great deal on a new GM car, light-duty truck, SUV or crossover? With a GM reward card, you accrue earnings on every credit card purchase to use toward the purchase or lease of an eligible, new GM vehicle. With three cards to choose from, you're sure to find one that suits you best.

# CHEVROLET

For more information about ownership extras, please visit the web sites listed.



[onstar.com](http://onstar.com)



[chevy.com/accessories](http://chevy.com/accessories)



[gm.xmradio.com](http://gm.xmradio.com)



**100,000 MILE | 5-YEAR  
POWERTRAIN WARRANTY**

[chevy.com/warranty](http://chevy.com/warranty)

GM, the GM Logo, Chevrolet, the Chevrolet Logo, and the slogans, emblems, vehicle model names, vehicle body designs and other marks appearing in this catalog are the trademarks and/or service marks of General Motors, its subsidiaries, affiliates or licensors. SIRIUS, XM and all related marks and logos are trademarks of SIRIUS XM Radio Inc. and its subsidiaries. The Bluetooth word mark is a registered trademark owned by Bluetooth SIG, Inc. and any use of such mark by Chevrolet is under license. iPod is a mobile digital device. iPod is a registered trademark of Apple, Inc. Pioneer is a registered trademark of the Pioneer Corp. ©2010 OnStar. All rights reserved. ©2010 General Motors. All rights reserved. Litho in USA.

September 2010



Chevrolet Equinox

Chevrolet Cruze



Become a fan of Chevrolet at [facebook.com/chevrolet](http://facebook.com/chevrolet).



Watch us on [youtube.com/chevrolet](http://youtube.com/chevrolet).



Follow us on [twitter.com/chevrolet](http://twitter.com/chevrolet).

*Now see what others are saying – or have your own say.*