



crown victoria
ninety-nine







It was their first date, and they were both a little nervous. John was late because he got the directions wrong. Linda was even later because she kept running to the window when she should have been getting ready. In the car, the small talk was tentative. John

laughed. "At 58," he said, **"you'd think I'd be better at this."**

"I don't think it ever gets easy," Linda said. But the dinner was great and the movie was good. John asked about Saturday. "Provided I can get the car," he winked.



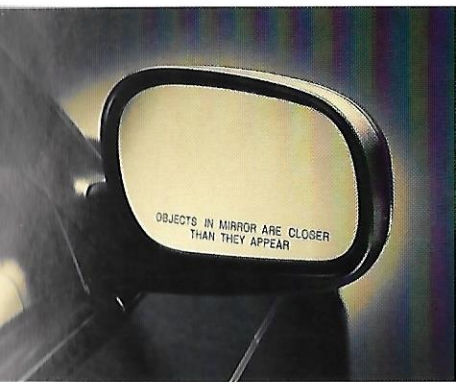


Crown Victoria



Crown Victoria shown in Toreador Red Clearcoat Metallic.

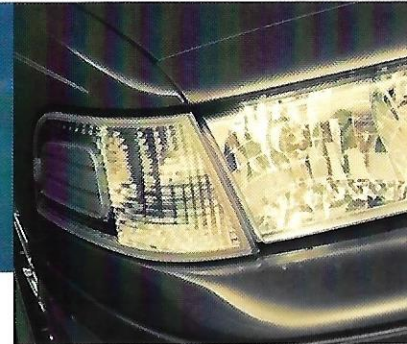
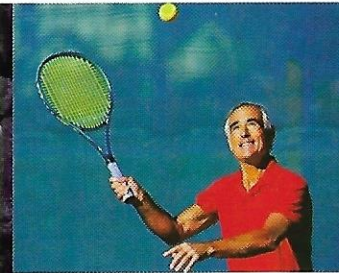
A smooth ride that's relaxing and **rewarding**. Expansive roominess and comfortable seating for six. Responsive V8 power and rear-wheel-drive **performance**. These are the full-size advantages for which Crown Victoria is famous. It stands, in a world of "designer" this and "exclusive" that, as an **affordable** alternative to pricier luxury automobiles. And now it includes **standard anti-lock brakes**. Crown Victoria is a true American tradition with style and technology for today's driving.



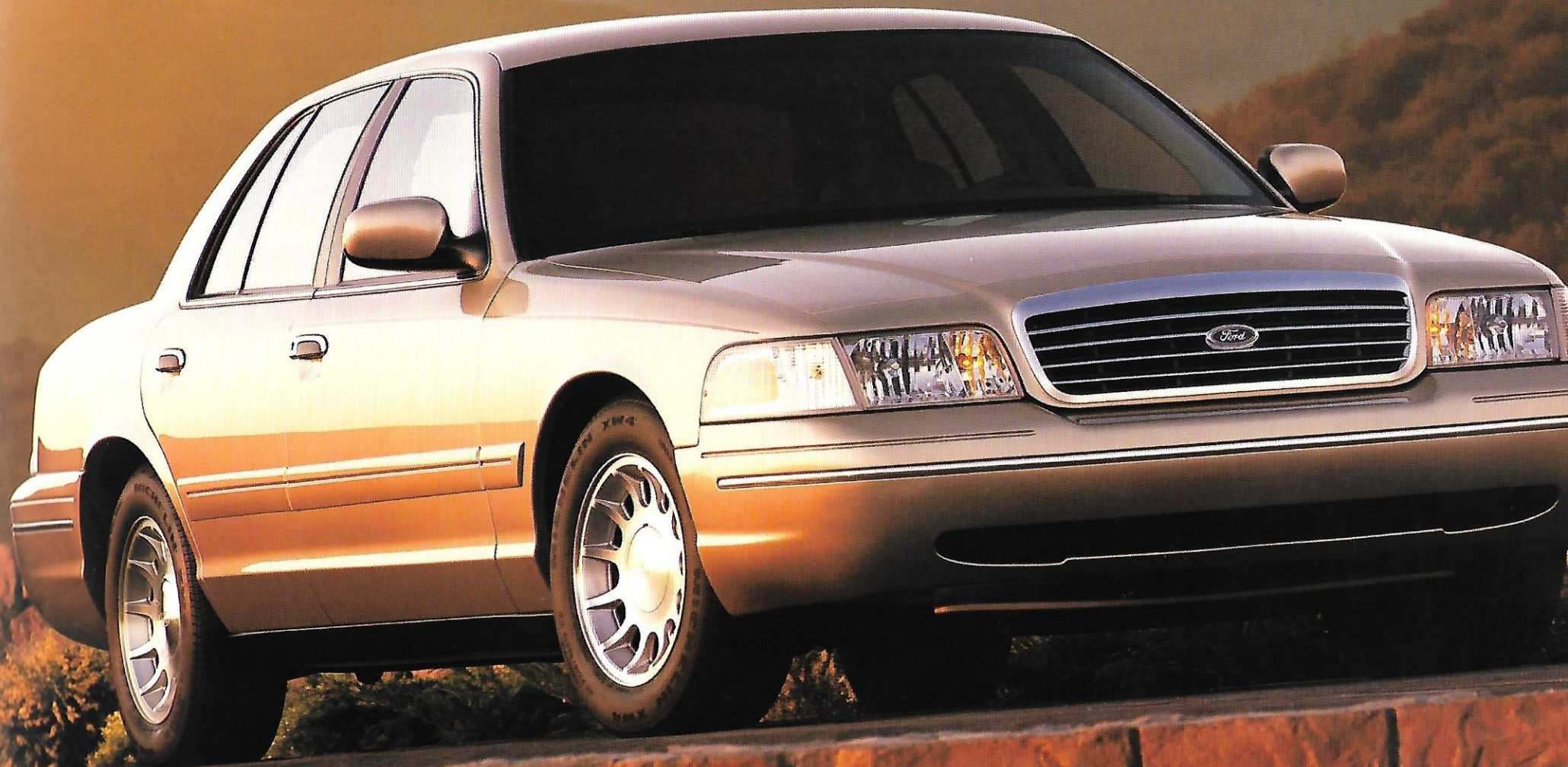
With Crown Victoria, the standard remote-controlled outside mirrors are power-assisted and color-keyed to the body.



Crown Victoria's clean lines have kept pace with the times, yet its traditional full-size car benefits remain uncompromised.



There's no law that says functional can't be stylish. Sculpted headlamps feature "crystalline" krypton bulbs for long life.



Crown Victoria LX



Crown Victoria LX shown in Deep Wedgewood Blue Clearcoat Metallic with optional Comfort Group.

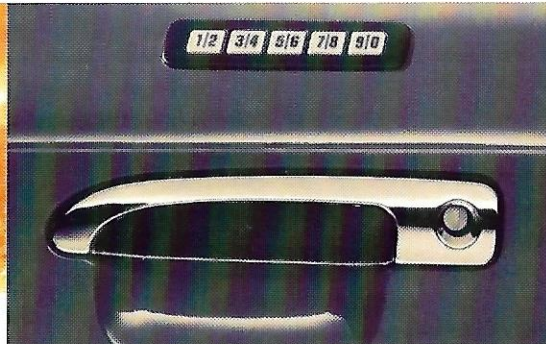
The **LX Series** adds appearance, comfort and convenience amenities to Crown Victoria's superior driving experience.

Seats are upholstered in **luxury cloth**, and there's a six-way power adjustment along with a lumbar support for the driver.

The standard Remote Keyless Entry system provides additional **security**, and the Light/Decor Group has illuminated visor mirrors. Outside, chrome cross-spoke locking wheel covers and dual bodyside paint stripes create a **distinctive** LX look.



Distinctive chrome cross-spoke wheels, lockable for enhanced security, are standard with the LX Series.



The Remote Keyless Entry system, standard with LX, is optional with the standard Crown Victoria. It lets you lock and unlock your car from a distance for extra peace of mind. Two transmitters with a panic button feature are included.



An automatic dimming rearview mirror, which includes a heated element, is part of the optional LX Comfort Group.

Somewhere after forty, **Peter hit his**
mid-life crisis. All he could think

about was a little red sports car. Mary knew there was

no reasoning with him. So when he pulled up the

drive in a new Crown Vic, she was mystified. Peter

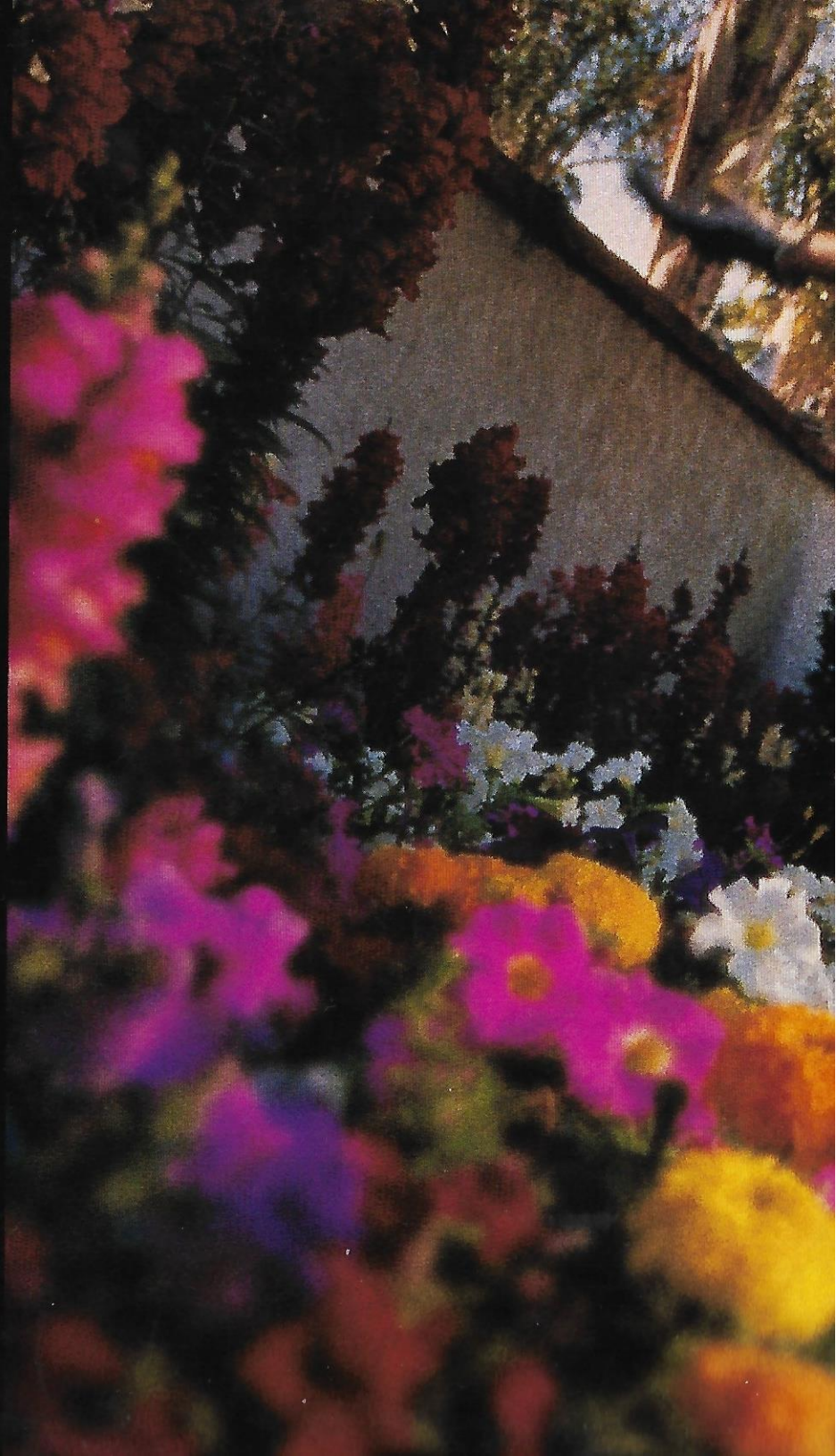
explained that all those sports cars didn't

have enough room for his clubs. And besides,

their legs were gonna need all the room and

comfort they could get. "Why?" puzzled Mary. Peter just

smiled. "I signed us up for tango lessons."

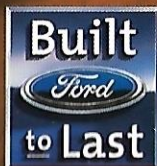




safety & durability

Today, automotive design must satisfy many more demands than it did even just a few years ago. Styling is important, of course, but considerations like safety and durability continue to grow in importance as customers weigh their purchase decisions ever more carefully.

Like all Ford vehicles, Crown Victoria has been designed to protect its occupants and to provide years of dependable service to its owners.



safety ★ ★ ★ ★ ★



Traditional body-on-frame construction has front frame rails of high-strength steel, which improves crash energy management design (frame shown in red).

Crown Victoria is the only large car to receive the government's **Five Star front crash test rating***. That's a testament to a full safety design which includes Second Generation Depowered airbags** and side door **intrusion beams**.

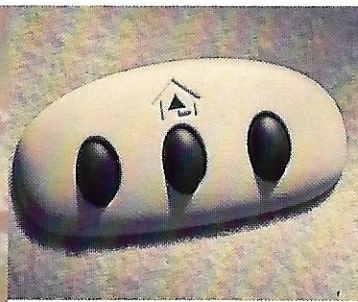
The available electronic traction control system, working with the **standard ABS**, detects slippage and automatically improves traction at all speeds. Crown Victoria's confident handling is also, in itself, an important **accident avoidance** tool.



Four-wheel power disc anti-lock brakes are standard on Crown Victoria. The front brakes feature heavy-duty dual-piston calipers.

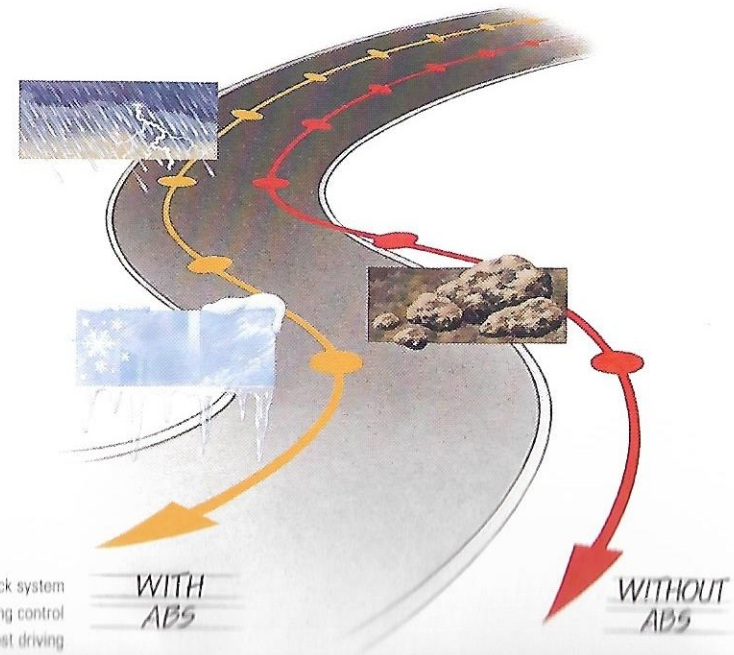


The Watt's linkage rear suspension is designed to improve directional stability and steering precision while maintaining traditional ride smoothness.

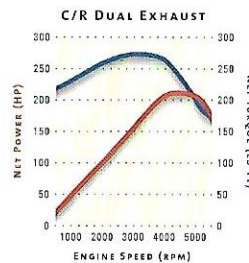
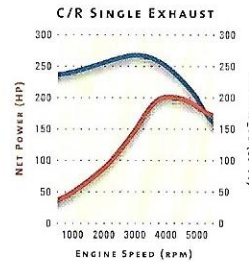
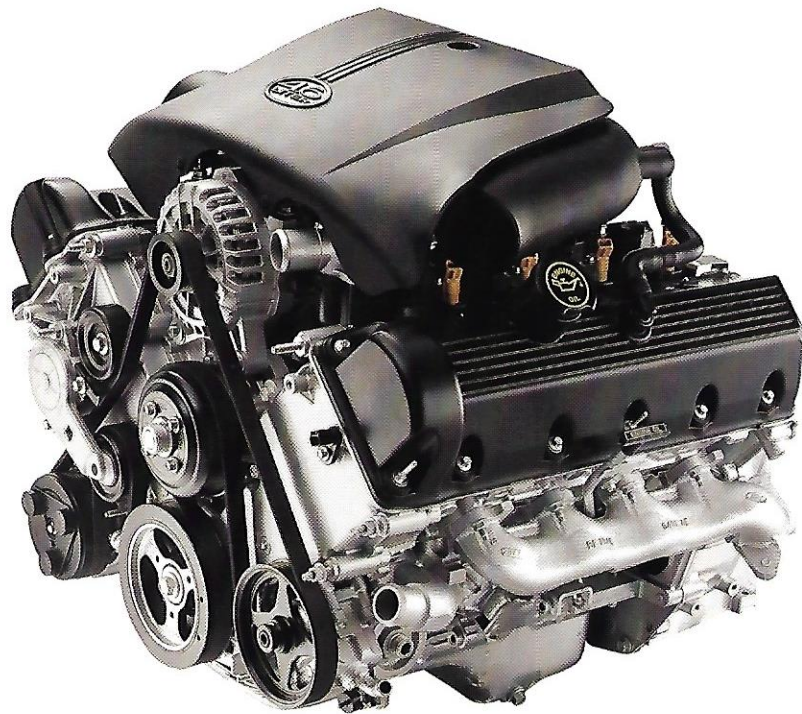


The universal garage door opener, available with LX, can be easily programmed to control an estate gate and a home security system, replacing up to three remotes.

The standard anti-lock system provides greater steering control while braking under most driving conditions, even when the road



durability & performance



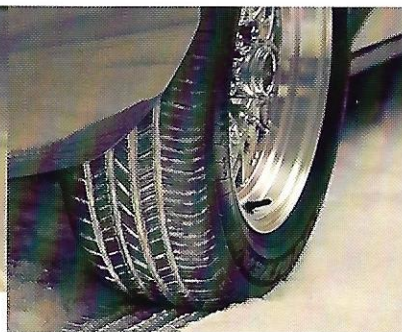
Since 1970, Ford Crown Victoria has faithfully logged billions of miles on America's highways. The heart of this veteran performer is its 4.6-liter single-overhead-cam V8 engine, an advanced powerplant that features an excellent balance of power and fuel efficiency.*

The suspension system, including an innovative Watt's linkage rear setup, combines a traditional large-car smooth ride with surprisingly agile handling characteristics.

**EPA mileage estimates unavailable at presstime. See your Ford Dealer for latest information.*



Smoothness of ride in a full-size car is expected. But what is likely to come as a surprise is the responsiveness of Crown Victoria's handling. Add the available Performance and Handling Package (see pages 16-17) and get the ultimate in Crown Victoria power and prowess.



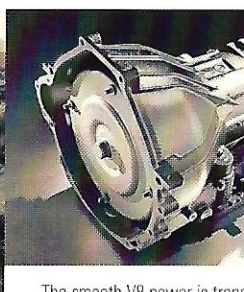
The optional electronic traction control system is linked to the standard anti-lock brakes and detects wheel slippage, increasing traction throughout the full range of vehicle speeds.



The 4.6-liter V8 is designed to go 100,000 miles between scheduled tune-ups (under normal driving conditions with routine fluid and filter changes).



Crown Victoria features a fail-safe cooling system that allows the vehicle to be driven a short distance under reduced power despite the loss of coolant.



The smooth V8 power is transmitted to the wheels by way of an electronic 4-speed automatic overdrive transmission.

With its V8 power and strong body-on-frame construction, Crown Victoria can tow up to 2,000 pounds provided that the Gross Combined







Interior

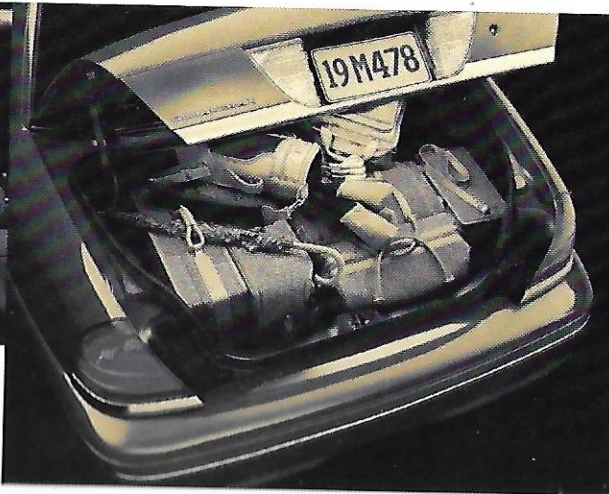


Crown Victoria LX with the optional Comfort Group and leather seating surfaces shown in Medium Parchment.

While rumble seats, vinyl roofs and push-button transmissions are only memories, **true full-size comfort** never entirely went away. Thankfully, it's alive and well in Crown Victoria, with its stretch-out **room for six** adults and a host of comfort and convenience features designed to make any trip more pleasurable. They include **power windows** and locks as well as items like speed control and a tilt steering wheel. And solar tinted glass helps the air conditioner keep things **cool and pleasant**.



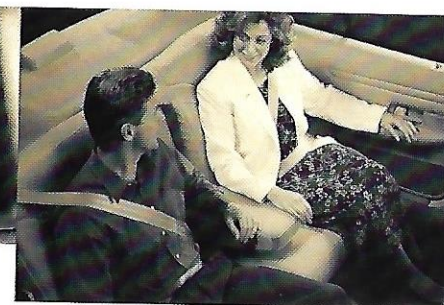
Electronic digital instrumentation is one of the premium items included in the optional LX Comfort Plus Group.



Crown Victoria features a spacious 20.6-cubic-foot "deep-well" trunk that's designed with a conveniently low lift-over height for easy loading and unloading.



Available with LX, the single CD player brings the fidelity of digital sound to your on-road entertainment.



The Crown Victoria LX center rear-seat armrest is large enough to be comfortably shared by two travelers.



Power windows and door lock are standard. The "express-down" feature allows the driver's window to be lowered completely with just one touch of

Paint Colors

Vibrant White Clearcoat



Silver Frost Clearcoat Metallic



Medium Grey Clearcoat Metallic



Harvest Gold Clearcoat Metallic



Toreador Red Clearcoat Metallic



Light Blue Clearcoat Metallic



Spruce Green Clearcoat Metallic



Dark Green Satin Clearcoat Metallic



Deep Wedgewood Blue Clearcoat Metallic



Black Clearcoat

EXTERIOR PAINT

INTERIOR TRIM

	Oxford White/ Light Graphite*	Light Graphite	Medium Parchment	Dark Denim Blue
Vibrant White Clearcoat	•	•	•	•
Silver Frost Clearcoat Metallic	•	•		•
Medium Grey Clearcoat Metallic	•	•		•
Harvest Gold Clearcoat Metallic			•	
Toreador Red Clearcoat Metallic	•	•	•	
Light Blue Clearcoat Metallic	•	•		•
Spruce Green Clearcoat Metallic		•	•	
Dark Green Satin Clearcoat Metallic	•	•	•	
Deep Wedgewood Blue Clearcoat Metallic	•	•		•
Black Clearcoat	•	•	•	

*Available on LX only and must include leather seating surfaces.

Equipment Groups

LX Comfort Group

- Electronic temperature control air conditioning
- 12-spoke aluminum wheels
- Power passenger seat with lumbar support
- Electronic auto-dim rearview mirror with compass
- Leather-wrapped steering wheel

LX Comfort Plus Group

All features included in the LX Comfort Group plus:

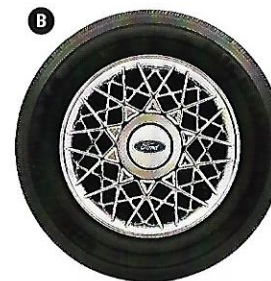
- Electronic instrumentation
- Leather seating surfaces
- Premium electronic AM/FM stereo/cassette w/RDS (Radio Data System)

Performance/Handling Package

- 215-hp 4.6L V8 with dual exhaust
- 3.27:1 axle ratio
- All-season 225/60TRx16 BSW "touring"
- 16" cast aluminum wheels
- Handling tuned suspension
 - Revised springs, shocks and stabilizer
 - Rear air suspension



A Deluxe wheel covers (standard on Crown Victoria)



B Chrome cross-spoke locking wheel covers (standard on LX)



C 12-spoke aluminum wheels (included in LX Comfort Group and Comfort Plus Group)



D 16" cast aluminum wheels (included in Performance/Handling Package)

Exterior Features	Crown Victoria	LX
Aero headlamps with long-life "crystalline" krypton bulbs	S	S
Solar tinted glass	S	S
Clearcoat paint with anti-chip primer	S	S
Lower bodyside urethane protection	S	S
Power remote-control mirrors (color-keyed)	S	S
Color-keyed bodyside moldings	S	S
Deluxe wheel covers	S	-
Chrome cross-spoke locking wheel covers	-	S

Safety and Security

Second Generation Depowered dual front airbags, driver and right passenger	S	S
Manual lap/shoulder belts for front and rear outboard passengers; lap belts for center front and rear seating positions	S	S
Brake/shift interlock	S	S
Childproof rear door locks	S	S
SecuriLock™ passive anti-theft system	S	S
Remote Keyless Entry system	O	S
Illuminated entry system	S	S
4-wheel anti-lock brakes	S	S
All-speed electronic traction control system	O	O
Fail-safe cooling system	S	S

Comfort and Convenience

Air conditioning	S	S
Front shoulder safety belt height adjusters	S	S
Analog gauges (voltmeter, oil pressure, water temperature, fuel) and warning lights	S	S
Trip odometer	S	S
Tilt steering wheel	S	S
Universal garage door opener	-	O
Speed control	S	S
Battery saver (turns off lights after 30 minutes)	S	S
Illuminated and lockable glove box	S	S
Headlamps-on reminder chime	S	S
Dual instrument panel courtesy lights with theater (slow dim/delayed off) feature	S	S
Light/Decor Group: driver and passenger visors with illuminated mirrors, dual beam dome/map light, and dual bodyside paint stripes	-	S
Front seat dual fold-down armrests	S	S

Comfort and Convenience Cont.

	Crown Victoria	LX
Rear seat center fold-down armrest	-	S
Rear seat heat ducts	S	S
Front passenger and two rear grab handles	S	S
Remote-control decklid release	S	S
Automatic parking brake release	S	S
Power windows with "express-down" driver's window	S	S
Power door locks	S	S
Power steering - speed-sensitive, variable assist	S	S
Rear window defroster	S	S
Interval wipers	S	S
Dual ashtray-mounted cupholders	S	S
Integral front door map pockets (plus seat back map pockets in LX)	S	S
Electronic digital clock with dimming feature	S	S
AM/FM stereo/cassette	S	S
AM/FM stereo/single CD radio	O	O
AM/FM stereo/cassette/Premium Sound system with 6-disc CD changer (trunk mounted)	-	O
Premium AM/FM stereo/cassette/Premium Sound w/RDS (Radio Data System)	-	O
Sound Insulation Package	S	S
Front and rear floor mats	O	O
Luxury full carpet luggage compartment trim	S	S
Carpeted spare tire cover	S	S

Seating

Cloth split bench seat with center fold-down armrest	S	-
Luxury cloth split bench seat with center fold-down armrest and rear fold-down armrest; 6-way power adjustment and lumbar support for driver; includes passenger manual 2-way front seat adjusters	-	S
Driver and passenger manual 2-way front seat adjusters with 10" seat track travel (passenger only with LX)	S	-
6-way power driver's seat adjustment	O	S
Leather seating surfaces	-	O

Tires

P225/60SRx16 BSW all-season	S	S
P225/60SRx16 WSW all-season	O	O
P225/60VRx16 BSW all-season (with 4.6L natural-gas engine only)	S	S

Option Groups

	Crown Victoria	LX
LX Comfort Group: electronic temperature control air conditioning, 12-spoke aluminum wheels, power passenger seat with lumbar support, electronic auto-dim rearview mirror with compass, and leather-wrapped steering wheel	-	O
LX Comfort Plus Group: all features included in the LX Comfort Group, plus electronic instrumentation, leather seating surfaces, and Premium electronic AM/FM stereo/cassette w/RDS (Radio Data System)	-	O
Performance/Handling Package: 4.6L V8 with dual exhaust (215-hp), 3.27:1 axle ratio, all-season 225/60TRx16 BSW handling tires, 16" cast aluminum wheels, handling tuned suspension	O	O

Specifications

Drivetrain: rear-wheel drive
Engine: 4.6-liter V8 with fail-safe cooling system
Induction system: sequential electronic fuel injection and EEC-V computer
Tune-up interval: 100,000 miles (under normal driving conditions with routine fluid and filter changes)
Transmission: electronic 4-speed automatic overdrive
Fuel capacity: 19 gallons
Horsepower, SAE net: 200 @ 4,250 rpm; 215 @ 4,500 with dual exhaust
Torque, SAE net: 275 @ 3,000 rpm; 285 @ 3,000 with dual exhaust
Dual exhaust: 215-hp
Battery: 72 amp maintenance-free
Alternator: 130-amp
Body construction: body-on-frame
Front suspension: short/long arm (SLA) with stabilizer bar
Rear suspension: Watt's linkage design with stabilizer bar
Steering: power speed-sensitive, variable assist
Brakes: power 4-wheel disc anti-lock brake system (standard)
Tires: P225/60SRx16 black sidewall (standard); white sidewall (optional)

S=Standard O=Optional G=Option Group Only --=Not Available

Competitive comparisons based on published 1998 competitive data.

A Response to the Need for a Cleaner Environment: All Ford vehicles are manufactured with a concern for environmental impact. An environmentally responsible natural-gas-powered Crown Victoria is also available. See your Ford Dealer for details.

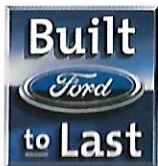
Product Changes and Options Availability: Following publication of the catalog, certain changes in standard equipment, options, prices and the like, or product delays, may have occurred which would not be included in these pages. Your Ford Dealer is your best source for up-to-date information. Ford Division reserves the right to change product specifications at any time without incurring obligations. Options shown or described are available at extra cost and may be offered only in combination with other options or subject to additional ordering requirements or limitations.

Roadside Assistance: Every new Ford includes the assurance of a 24-hour emergency Roadside Assistance Program provided during the 3-year/36,000-mile bumper-to-bumper warranty. Ask your Ford Dealer for a copy of the limited warranty and complete details on this program which includes such services as fuel delivery, tire change, jump start or even help when you're locked out of your vehicle.



Race For The Cure: As part of our ongoing commitment to breast cancer research and public awareness, Ford Division is proud to continue its national sponsorship of the Susan G. Komen Foundation's Race For The Cure.





Visit the Ford website at www.ford.com