

2010
FLEX 



2010
FLEX 



Flex Limited. Cinnamon Metallic. White Suede roof. Available equipment.

THIS IS FLEX

it's not your average ride

So get ready to experience it. Flex isn't easy to describe. But you'll know it when you see it.

The design is simple: stacked forms in perfect proportion. Like modern architecture on wheels.

Deep grooves stream down the bodysides, seeming to move forward, even when Flex is standing still.
Up front: a gleaming chrome grille. Up top: an available color-contrasting lid.

And always surrounding it: curious stares and a barely audible "WHAT'S THAT?" as Flex cruises by.

2010
FLEX 

IT RAISES EYEBROWS

and expectations

But most of all, Flex raises questions.

Actually, it's a crossover.

Up to 7 total: 2 in front, up to 3 in the middle, 2 in back.

Loaded with technology like available voice-activated communications and entertainment, plus available Active Park Assist.

A 3.5L Duratec® V6. 6-speed auto. Or the available, all-new 3.5L EcoBoost™ V6 twin-turbocharged, direct-injection engine.

It's got you covered. 6 airbags, including a 3-row Safety Canopy® System. Even a rollover sensor. All standard.

White Suede. Ingot Silver Metallic.
Or body-color roof. Your choice.

If you're a doer, not a dreamer,
then yes — perfect for you.



Flex Limited. Cinnamon Metallic (above). Dark Ink Blue Metallic (right). Both with White Suede roof. Available equipment.





Flex Limited. Charcoal Black. 2nd-row bucket seats. Available equipment.

IT STRETCHES ALL THE RULES

not to mention your legs, arms and other body parts too

See that 2nd-row lounging room? It's enough to make a limo green with envy.

Simple truth: Flex has the most expansive 2nd-row space in its class!¹



Fold down the driver-side seats for long items.



Fold down all passenger-side seats for almost 10' of clearance from front to rear.



Fold down all passenger seats and carry almost anything.

¹Large Crossover class.

2010
FLEX 



Flex Limited. Charcoal Black. Available equipment.

IT'S ALL ABOUT YOU

in fact, it even suits your mood

The provocative exterior of Flex and those cool grooves travel inside, creating an inviting "horizon line" that opens your view like the great outdoors. Available wide-open glass above; instrumentation below.

Uncluttered. Crisp. Contemporary.

For a more personalized driving domain, choose Limited with standard Ambient Lighting. It'll brighten the front cupholders, footwells and 2nd-row control center in any of 7 hues to match your mindset. Happy. Mellow. Or anything in between.

2010
FLEX 



Flex Limited. Charcoal Black. Available equipment.

IT OPENS EYES

and lifts spirits

In here, you'll forget you're actually *in* at all.

An available multi-panel Vista Roof™ welcomes the sky for all 3 rows to enjoy.

Over the front seats, a sliding moonroof breathes in the fresh air. The 2nd and 3rd rows each get their own overhead windows.

With panoramic views like this, Flex may soon become your personal skylight lounge. Just sit back and soak it all in.



The 2nd-row seats conveniently flip and fold to help ease access to the 3rd row. A PowerFold® release is included with the available 2nd-row bucket seats and on the 40 section of the standard 2nd-row 60/40 split bench seat.

Chrome-capped, power, heated sideview mirrors and bright HID headlamps, standard on Limited, enhance visibility — and style.

Cargo sits neatly in the storage well behind the 3rd row.



No keys? No problem. Integrated into Flex's driver-side door pillar is a marvelously convenient innovation: our newest SecuriCode™ keypad. Your touch lights it up. Enter your code and the doors unlock and the interior lights turn on. Suddenly you're free from bulky pockets.

Heated front seats are standard on SEL and Limited models. Warmers are available with the 2nd-row bucket seats on Limited too.

Plug in a laptop or other small electronics with the available 110-volt inverter. It's located right behind the front console.

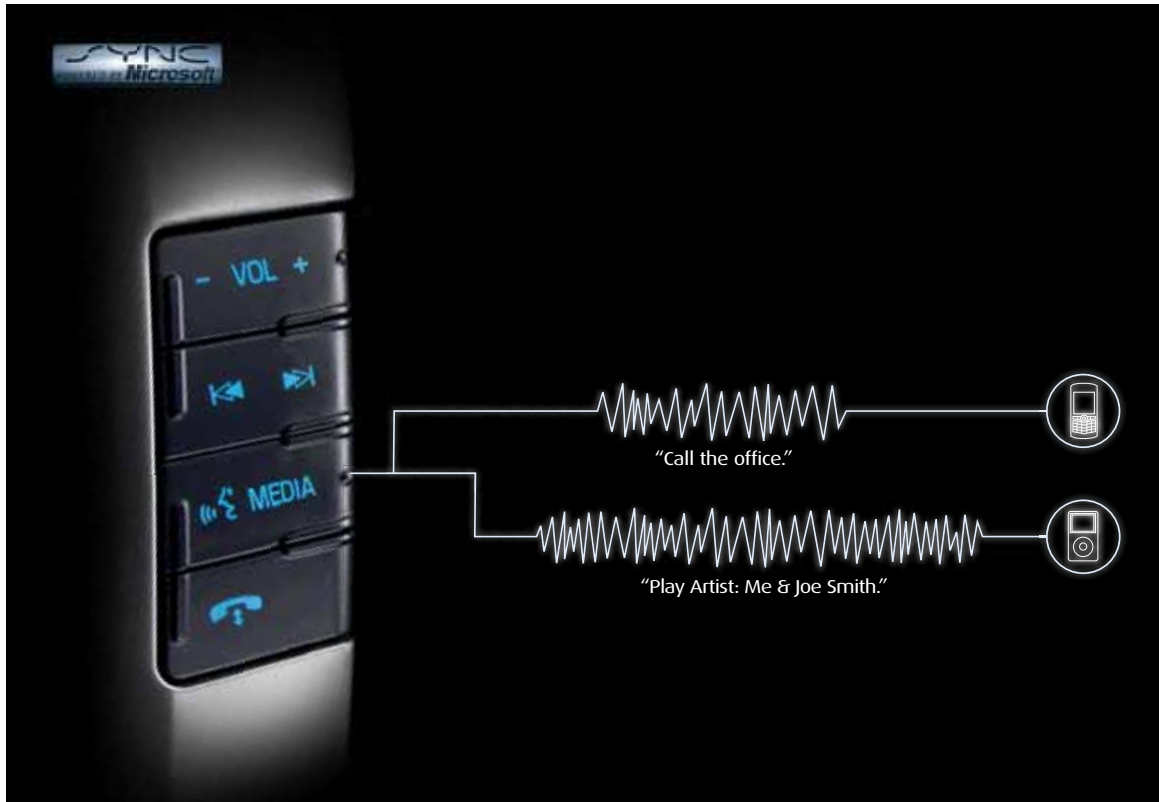
IT GIVES YOU OPTIONS

inside and out

Pop in a beverage at room temp; pull it out later at a cool 41°. The secret is an available compressor-driven refrigerator, conveniently located in the center console between the available 2nd-row bucket seats.

It not only chills; it freezes. Down to 23°. That's c-c-c-cold.





IT BRINGS THE BEST IN AUDIO FIDELITY

straight to your ears

Flex offers an available Sony® audio system with surround sound and Sony DSP processing.

This amazing system uses the latest Dolby® Automotive Entertainment Program technology to bring the home theater performance of Dolby Pro Logic® II into your vehicle.

390 watts of continuous power, 12 high-quality speakers and 2 amplifiers work together to deliver Sony's certified, unique, rich sound. Clearly, it's like nothing you've ever heard before.

IT GRANTS YOUR WISHES

you talk, SYNC listens™

Step inside a SYNC®-equipped Flex with your compatible, paired Bluetooth®-enabled phone or plug in a portable digital media player. It'll know you've arrived. Press a button on the steering wheel, speak your mind (say, "call the office"), and it follows your commands. Ford's exclusive SYNC system,¹ developed in association with Microsoft®, is an available voice-activated, customizable media system that lets you make calls, take calls, change up music and more — all while keeping both hands on the wheel.

Convenient new SYNC Driver Services include 911 Assist,^{TM2} Vehicle Health Reports, up-to-the-minute weather,³ traffic alerts,³ turn-by-turn directions,³ business searches³ and personalized news.³ Visit SyncMyRide.com for the latest information about exciting new features.

¹Driving while distracted can result in loss of vehicle control. Only use mobile phones and other devices, even with voice commands, when it is safe to do so. ²The vehicle's electrical system (including the battery), the wireless service provider's signal, and a connected mobile phone must all be available and operating for 911 Assist to function properly. These systems may become damaged in a crash. The paired mobile phone must be turned on, connected to SYNC, and the 911 Assist feature enabled in order for 911 to be dialed. ³Driver Services not available with SIRIUS Travel Link or Navigation System. See your dealer for details.



IT IS ROCKET SCIENCE

right from satellites to your screen

A single glance, and suddenly you become the most informed, up-to-date person you know. This voice-activated Navigation System, now standard on Limited, integrates direction guidance with SIRIUS Travel Link™¹ and a Rear View Camera. And it all displays on an intuitive, easy-to-read, 8" touch screen with bold, colorful graphics. For travel directions, just enter or say your destination. Then get on your way, without worrying about the roads.

Thanks to innovative SIRIUS Travel Link, you can access real-time traffic info, find the lowest gas prices, and even see what's playing at the local theater. And that's not all.

¹Real-time traffic monitoring available in select markets. Some features are unavailable while driving. Subscription required after introductory 6 months expire. Service available in the 48 contiguous United States and the District of Columbia.



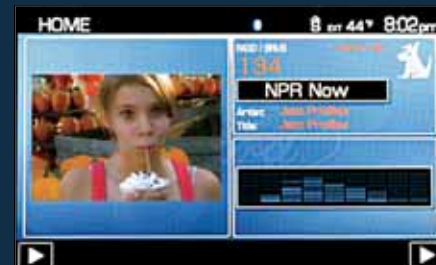
Gas prices, locations and details

Travel Link fuel info includes over 120,000 stations nationwide, sorted by gas price, distance and name.



Weather, sports and movies

Get the scoop with local and national weather, sports scores and schedules, and movie listings and showtimes.



Personal photo gallery and music storage

Display photos on-screen along with other info like songs from your personal jukebox or SIRIUS® Satellite Radio.



24 mpg
 highway¹



IT TINGLES SPINES

like the electric buzz of night

Turn the key. Turn the corner. And expect to turn some heads. Flex isn't just exciting to look at — it's exciting to drive. It hunkers down. Puts a limit on lean. Grabs corners. Soaks up bumps and potholes.

The standard 3.5L Duratec® V6 quickens your pulse with 262 hp and 248 lb.-ft. of torque. An available, all-new 3.5L EcoBoost™ V6 twin-turbocharged, direct-

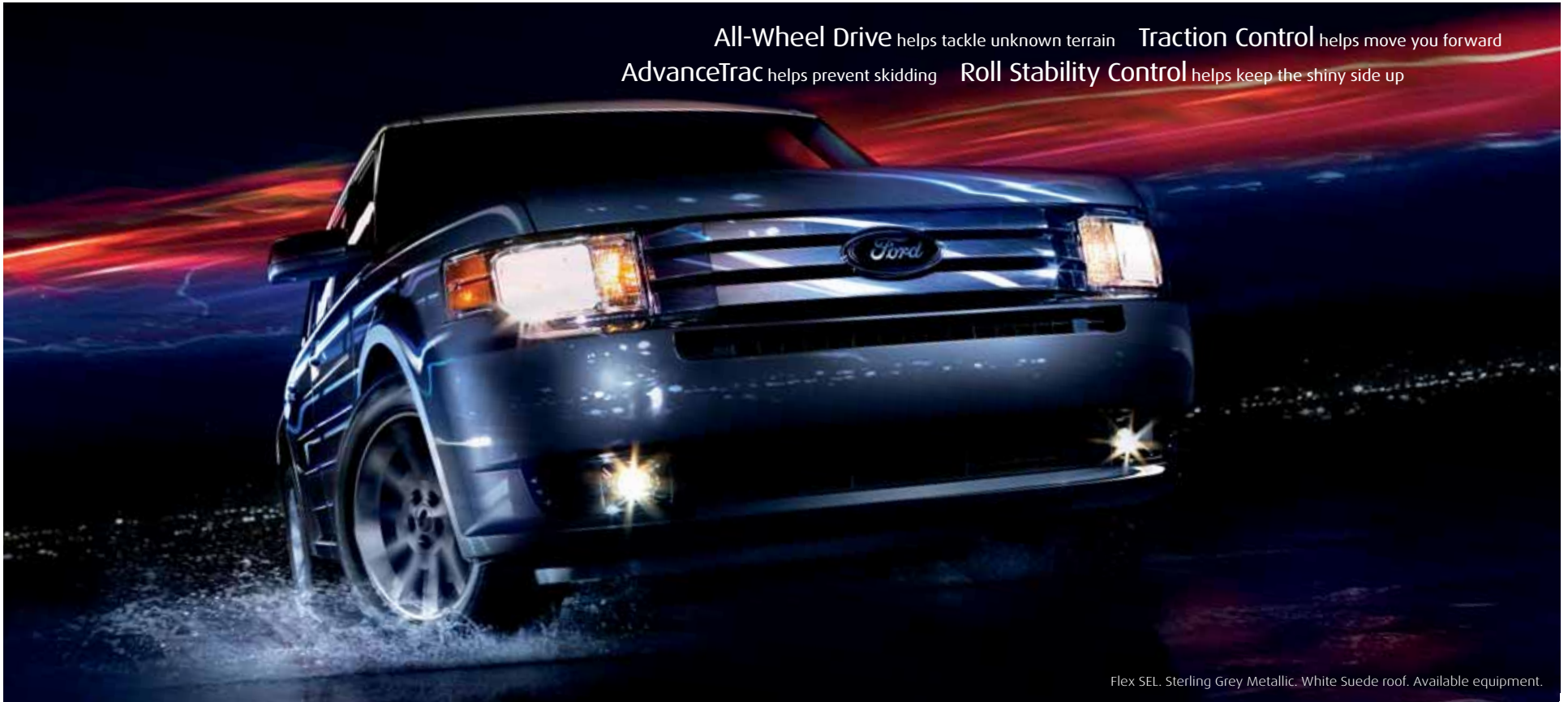
injection engine really gets the heart pounding. 355 hp and a massive 350 lb.-ft. of torque. Up to an EPA-estimated 22 mpg hwy. It's V8 power with V6 fuel economy.² Both pair up with an efficient 6-speed automatic transmission. With the EcoBoost engine, you also get steering wheel-mounted paddle shifters for a more spirited, performance-oriented driving experience.

Truly uplifting.

¹EPA-estimated 17 mpg city/24 hwy., Flex FWD with 3.5L Duratec V6 engine. EPA-estimated 16 mpg city/22 hwy., Flex AWD with 3.5L Duratec V6 engine. ²EPA-estimated 16 mpg city/22 hwy., Flex AWD with 3.5L EcoBoost V6 engine with premium fuel.

2010
FLEX 

All-Wheel Drive helps tackle unknown terrain Traction Control helps move you forward
AdvanceTrac helps prevent skidding Roll Stability Control helps keep the shiny side up



Flex SEL. Sterling Grey Metallic. White Suede roof. Available equipment.

IT TANGOS WITH THE UNPREDICTABLE

without missing a step

In addition to standard front-wheel drive, Flex offers the confidence of available automatic All-Wheel Drive (AWD), included with the EcoBoost™ V6. This intelligent system distributes up to 100% of the available torque to the tire or tires with the most traction. After all, Flex doesn't believe in spinning its wheels.

*Remember that even advanced technology cannot overcome the laws of physics. It's always possible to lose control of a vehicle due to inappropriate driver input for the conditions.

fordvehicles.com

On top of that, every Flex includes Traction Control to help prevent wheel slip during acceleration, as well as this brilliant technology:

Ford's AdvanceTrac® with RSC® (Roll Stability Control™).¹ It's the only system in the industry that uses 2 gyroscopic sensors to monitor both yaw and roll motions to provide side-slip control *and* roll stability control. It's always on and always working. Just follow its lead.

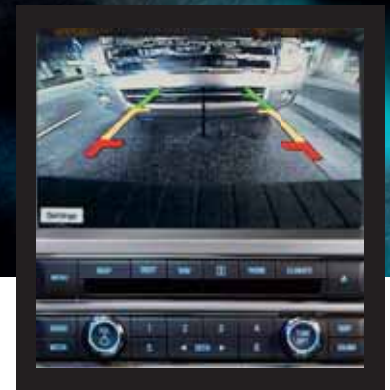


Flex Limited. Cinnamon Metallic. Available equipment.

IT LITERALLY GUIDES YOU

into all sorts of spots

New available Active Park Assist takes the work out of parallel parking — in as little as 24 seconds. Just press a button and drive by potential spots to activate the system. It uses ultrasonic sensors to take measurements and prompts you when it's ready to park. You simply respond to system prompts and control vehicle speed using the gear shifter, gas and brake pedals. It handles the hard parts — figuring out if the spot is big enough and automatically steering into it.



The standard Reverse Sensing System offers invaluable guidance: When you're backing up slowly, it audibly alerts you to certain objects behind the vehicle, so you can avoid contact. A Rear View Camera is integrated with the available voice-activated Navigation System. It delivers a full-color image to your 8" screen. So you can see exactly where to go. And where *not* to go.



Airbags. Yes, they help protect. Flex has 6 in total, including dual-stage front, front-seat side, and the Safety Canopy® System featuring 3-row side-curtain airbags and a rollover sensor.



Flex's structure is carefully designed to protect what's inside. Thanks to extensive computer-aided engineering tools, it provides outstanding crashworthiness. Part of this is Flex's SPACE (Side Protection And Cabin Enhancement) Architecture — an energy-absorbing design with a hydroformed cross-car beam between the door frames to strengthen each bodyside. A strong roof crossmember adds strength. At the front, an energy-absorbing structural member, front bumper plate, and tunnel rails assist in front impacts. As you'd expect, all of this is in addition to features like a collapsible steering column, Tire Pressure Monitoring System and more. All standard equipment on every Flex model.



IT GOES ABOVE AND BEYOND

for what matters most

There's really only one way to look at safety: seriously. At Ford, we do it every day, developing systems that will help protect you and your passengers on today's always-changing, distraction-filled roads. The results of our commitment? Flex was named a 2009 "Top Safety Pick" by the IIHS *and* has received 5-Star ratings¹ in the NHTSA's frontal and side-impact crash tests. And that means the world to us.

New MyKey™ is positively habit-forming. Program ignition keys to help encourage smart driving habits. Buckling up. Traveling at appropriate speeds. And more.

¹Star ratings are part of the U.S. Department of Transportation's Safercar.gov program (www.safercar.gov).

Specs

DIMENSIONS & CAPACITIES

Exterior	
Wheelbase	117.9"
Length	201.8"
Height – Excluding options	68.0"
Height – Including options	69.3"
Width – Excluding mirrors	75.9"
Width – Including mirrors	88.8"
Width – Mirrors folded	80.1"

Interior	
1st Row	
Head room	41.8"
Shoulder room	58.4"
Hip room	55.5"
Leg room	40.8"

2nd Row	
Head room	40.5"
Shoulder room	58.1"
Hip room	55.0"
Leg room	44.3"

3rd Row	
Head room	38.7"
Shoulder room	50.8"
Hip room	41.1"
Leg room	33.3"

Cargo Volume	
Behind 1st row	83.2 cu. ft.
Behind 2nd row	43.2 cu. ft.
Behind 3rd row	20.0 cu. ft. ¹

HORSEPOWER, TORQUE & 2010 EPA-ESTIMATED FUEL ECONOMY

3.5L Duratec® V6 Engine	
Horsepower	262 @ 6250 rpm
Torque (lb.-ft.)	248 @ 4500 rpm
6-speed automatic	
FWD	17 mpg city/24 hwy.
AWD	16 mpg city/22 hwy.

3.5L EcoBoost™ V6 Engine	
Horsepower	355 @ 5700 rpm
Torque (lb.-ft.)	350 @ 3500 rpm
6-speed automatic	
AWD	16 mpg city/22 hwy.

Dimensions may vary by trim level.

Cargo and load capacity limited by weight and weight distribution.

STANDARD

Mechanical	
3.5L Duratec V6 with 6-speed automatic transmission	
Front-wheel drive (FWD)	
4-wheel disc Anti-lock Brake System (ABS)	
Power rack-and-pinion steering	

Safety & Security	
Personal Safety System™ for driver and front passenger includes dual-stage front airbags ² safety belt pretensioners, safety belt energy-management retractors, safety belt usage sensors, driver-seat position sensor, crash severity sensor, restraint control module and Front-Passenger Sensing System	
3-point safety belts for all seating positions	
Adjustable head restraints	
AdvanceTrac® with RSC® (Roll Stability Control™) and Traction Control	
Battery saver	
Belt-Minder® front safety belt reminder	
Child-safety rear door locks	
Front-seat side airbags ²	
Illuminated entry	
Integrated keyhead transmitter remotes (2)	
LATCH – Lower anchors and tether anchors for child-safety seats	
MyKey™ owner controls feature	
Safety Canopy® System with side-curtain airbags ² and rollover sensor	
SecuriLock® passive anti-theft ignition system	
Side-intrusion door beams	
Tire Pressure Monitoring System (excludes spare)	

Interior	
1st-row center console with armrest, storage, 2 cupholders, and rear pull-out drawer with 2 cupholders and storage for 2nd-row passenger use	
Accessory delay	
Air conditioning in all 3 rows	
Auto-dimming rearview mirror	
Autolock power door locks	
Auxiliary audio input jack	
Cabin air filter	
Carpeted floor mats in 1st and 2nd rows	
Cupholders/bottle holders (10)	
Driver and front-passenger sun visors with illuminated vanity mirrors	
Grab handles (3)	
Leather-wrapped shifter	
Leather-wrapped steering wheel with cruise and secondary audio controls	
Manual tilt steering column (telescoping – late availability)	
Map pockets in 1st-row seatbacks	
Message center with trip computer	
Overhead console with map lights and sunglasses holder	
Power points (3)	
Power windows with one-touch-up/-down driver-window feature	
Reading lamps for 2nd- and 3rd-row passengers	

Exterior	
Autolamp automatic headlamps with wiper-activated headlamps feature	
Easy Fuel™ capless fuel filler	
Privacy glass on 2nd- and 3rd-row windows and liftgate	
Rear-window defroster	
Reverse Sensing System	
SecuriCode™ invisible keypad	
Windshield wipers – Intermittent front (speed-sensitive) and 2-speed rear	

Seating	
6-way power driver seat with 2-way manual front-passenger seat	
7-passenger seating	
1st-row bucket seats with fold-flat front-passenger seat	
2nd-row 60/40 split bench, fold-flat with PowerFold® function on 40 section	
3rd-row fold-in-floor 50/50 split bench	

¹Includes 5.0-cu.-ft. rear cargo storage well. ²Always wear your safety belt and secure children in the rear seat.

New Vehicle Limited Warranty. We want your Ford Flex ownership experience to be the best it can be. So under this warranty, your new vehicle comes with 3-year/36,000-mile Bumper-to-Bumper Coverage, 5-year/60,000-mile Powertrain Warranty Coverage, 5-year/50,000-mile Safety Restraint Coverage, and 5-year/unlimited-mile Corrosion (Perforation) Coverage – all with no deductible. Please ask your Ford Dealer for a copy of this limited warranty.

Roadside Assistance. Covers your vehicle for 5 years or 60,000 miles, so you have the security of knowing that help may be only a phone call away should you run out of fuel, lock yourself out of the vehicle, or need towing. Your Ford Dealer can provide complete details on all of these advantages.

Ford Credit. Get the ride you want. Whether you plan to lease or finance, you'll find the choices that are right for you at Ford Credit. Ask your Ford Dealer for details or check us out at fordcredit.com.

Ford Extended Service Plan. For a purchase or lease, the Ford Extended Service Plan (ESP) gives you "Peace-of-Mind" protection designed to cover key vehicle components and protect you from the cost of unexpected repairs. Ask your dealer for a Ford ESP, the only service contract backed exclusively by Ford and honored at all Ford Lincoln Mercury dealerships.

Insurance Services. Get Ford Motor Company quality in your auto insurance. Our program offers industry-leading benefits and competitive rates. Call 1-877-367-3847, or visit us at fordvip.com for a no-obligation quote. Insurance offered by American Road Services Company (in CA, American Road Insurance Agency), a licensed agency and subsidiary of Ford Motor Company.

Comparisons based on 2009 competitive models (Large Crossover class), publicly available information and Ford certification data at time of release. Some features discussed may be optional. Vehicles shown may contain optional equipment. Features shown may be offered only in combination with other options or subject to additional ordering requirements or limitations. Dimensions shown may vary due to optional features and/or production variability. Following release of the PDF, certain changes in standard equipment, options and the like, or product delays may have occurred which would not be included in these pages. Your Ford Dealer is the best source for up-to-date information. Ford Division reserves the right to change product specifications at any time without incurring obligations.



FLEX SE

Equipped with all standard features, plus:

Rapid Spec 101A:

- 17" painted-aluminum wheels with P235/60R17 BSW tires
- AM/FM stereo/single-CD player and 6 speakers
- Fog lamps with body-color bezels
- Black, manually folding, power sideview mirrors
- Outside temperature and compass displays
- Body-color-painted door handles
- Bright polished stainless steel exhaust tips

Available Options & Packages

- Two-tone roof
- All-weather floor mats
- Ford SYNC® voice-activated, in-vehicle communications and entertainment system
- AM/FM stereo/6-disc in-dash CD changer, 6 speakers and SIRIUS Satellite Radio with 6-month subscription
- 2nd-row cloth 40/40 split reclining bucket seats with PowerFold®
- Black roof-rack side rails
- Class III Trailer Tow Package:** hitch receiver with 4500-lb. rating, 4-/7-pin connector with wiring harness, engine oil cooler, tire mobility kit and Trailer Sway Control



FLEX SEL

Equipped with all standard SE features, plus:

Rapid Spec 205A:

- 18" machined-aluminum wheels with P235/60R18 BSW tires
- AM/FM stereo/6-disc in-dash CD changer, 6 speakers and SIRIUS Satellite Radio with 6-month subscription
- Ford SYNC voice-activated, in-vehicle communications and entertainment system
- Fog lamps with chrome bezels
- Body-color, power, heated, manually folding sideview mirrors
- Chrome door handles
- Dual-zone Electronic Automatic Temperature Control
- 1st-row heated bucket seats, including 10-way power driver seat and 6-way power passenger seat with manual lumbar
- Chrome beltline
- Woodgrain appearance appliqué on instrument panel and door trim
- Universal Garage Door Opener
- Cargo net

Available Option Groups

- Convenience Package:** power-adjustable pedals with memory, power liftgate, memory settings for driver seat and heated sideview mirrors, security approach lamps and 110-volt inverter with AC outlet (206A)
- Sony® AM/FM stereo/6-disc in-dash CD changer and 12 speakers in 10 locations + 1st- and 2nd-row leather-trimmed seating with 3rd row vinyl + **Convenience Package** (207A)
- 3.5L EcoBoost™ V6 + 6-speed automatic transmission with paddle shifters + dual exhaust with chrome tips + All-Wheel Drive (AWD) + 20" bright painted-aluminum wheels with P255/45R20 all-season BSW tires + Sony audio + 1st- and 2nd-row leather-trimmed seating with 3rd row vinyl + **Convenience Package** (208A)

Available Options & Packages

- All-Wheel Drive (AWD) (included with 3.5L EcoBoost V6)
- 2nd-row console (requires 2nd-row 40/40 split reclining bucket seats and Convenience Package)
- 2nd-row 40/40 split reclining bucket seats with PowerFold
- All-weather floor mats
- Two-tone roof
- Chrome roof-rack side rails
- Multi-panel Vista Roof™ (requires Convenience Package)
- White Platinum Metallic Tri-Coat paint
- Red Candy Metallic Tinted Clearcoat paint
- Active Park Assist (requires 3.5L EcoBoost V6)
- Dual-Headrest DVD Entertainment System includes color-matched upholstered front headrests with integrated 7" adjustable monitors, top-slot-loading DVD player with gaming ports and remote control (late availability; requires Convenience Package)

Class III Trailer Tow Package



FLEX LIMITED

Equipped with all standard SEL features, plus:

Rapid Spec 302A:

- 19" polished-aluminum wheels with P235/55R19 BSW tires
- High-Intensity Discharge (HID) headlamps
- Chrome-capped, power, heated, power-folding sideview mirrors with integrated security approach lamps and memory
- Power liftgate
- Satin-aluminum liftgate appliqué
- LED taillamps
- Chrome sill plates
- 110-volt inverter with AC outlet
- Power-adjustable pedals with memory
- Ambient Lighting**
- 1st-row perforated leather-trimmed, heated bucket seats, including 10-way power driver seat with memory and manual lumbar, and 6-way power passenger seat
- 2nd-row perforated leather-trimmed (outboard positions) 60/40 split bench seat with folding seatbacks
- Color-keyed leather-wrapped steering wheel with wood inlay, cruise and secondary audio controls
- Sony AM/FM stereo/6-disc in-dash CD changer and 12 speakers in 10 locations
- Voice-activated Navigation System¹ with Rear View Camera includes 8" in-dash screen and single-CD/DVD, SIRIUS Travel Link™ services with 6-month subscription, and analog clock

Available Option Groups

- Multi-panel Vista Roof + 2nd-row bucket seats + refrigerated 2nd-row console + 20" bright painted-aluminum wheels with P255/45R20 all-season BSW tires (303A)
- 3.5L EcoBoost V6 + 6-speed automatic transmission with paddle shifters + dual exhaust with chrome tips + All-Wheel Drive (AWD) + 20" bright painted-aluminum wheels with P255/45R20 all-season BSW tires (304A)

Available Options & Packages

- All-Wheel Drive (AWD) (included with 3.5L EcoBoost V6)
- 2nd-row console (requires 2nd-row 40/40 split reclining seats)
- 2nd-row perforated leather-trimmed 40/40 split reclining bucket seats with PowerFold
- All-weather floor mats
- Dual-Headrest DVD Entertainment System includes color-matched upholstered front headrests with integrated 7" adjustable monitors, top-slot-loading DVD player with gaming ports and remote control
- Class III Trailer Tow Package**
- Two-tone roof
- Multi-panel Vista Roof
- Chrome roof-rack side rails
- Refrigerated console (requires 2nd-row console and 3.5L EcoBoost V6)
- 20" bright painted-aluminum wheels with P255/45R20 all-season BSW tires (included with 3.5L EcoBoost V6)
- White Platinum Metallic Tri-Coat paint
- Red Candy Metallic Tinted Clearcoat paint
- Active Park Assist (requires 3.5L EcoBoost V6)

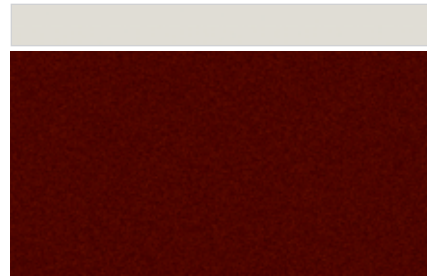
¹Limited coverage in Alaska.

Microsoft is a registered trademark of Microsoft Corporation.
 The Bluetooth word mark is a trademark of the Bluetooth SIG, Inc.
 Sony is a registered trademark of Sony Corporation.
 Dolby and Pro Logic are registered trademarks of Dolby Laboratories.
 SIRIUS is a registered trademark of SIRIUS XM Radio Inc.
 Subscriptions governed by SIRIUS Terms and Conditions at sirius.com/serviceterms.

Exterior colors



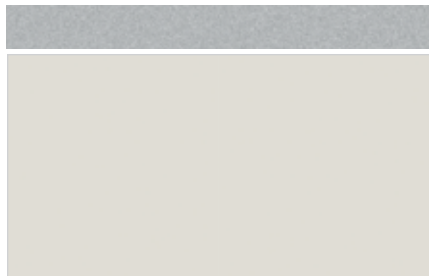
Dark Ink Blue Metallic



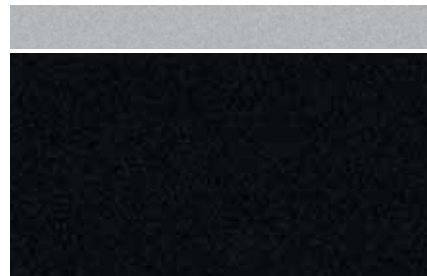
Cinnamon Metallic



Red Candy Metallic Tinted Clearcoat



White Suede



Tuxedo Black Metallic



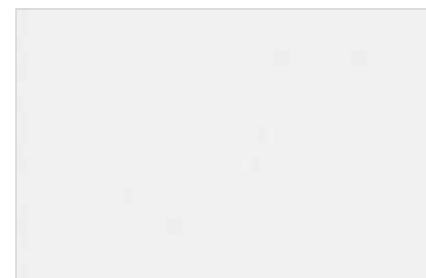
Sterling Grey Metallic



Steel Blue Metallic



Ingot Silver Metallic



White Platinum Metallic Tri-Coat

 = Available White Suede roof

 = Available Ingot Silver Metallic roof

	Interior Colors	
SE		
Dark Ink Blue Metallic	●	●
Cinnamon Metallic	●	●
White Suede	●	●
Tuxedo Black Metallic	●	●
Sterling Grey Metallic	●	●
Steel Blue Metallic	●	●
Ingot Silver Metallic	●	●

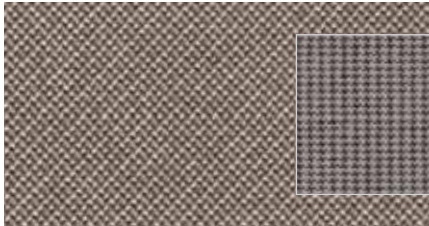
	Interior Colors	
SEL/Limited		
Dark Ink Blue Metallic	●	●
Cinnamon Metallic	●	●
Red Candy Metallic Tinted Clearcoat ¹	●	●
White Suede	●	●
Tuxedo Black Metallic	●	●
Sterling Grey Metallic	●	●
Steel Blue Metallic	●	●
Ingot Silver Metallic	●	●
White Platinum Metallic Tri-Coat ¹	●	●

INTERIORS: ● Medium Light Stone ● Charcoal Black

¹Extra-cost option.

Colors shown are representative only. Not all colors are available on all models. See your dealer for actual paint/trim options.

Interior colors



Cloth – Medium Light Stone
 with Houndstooth-patterned inserts
 Standard on SE and SEL



Cloth – Charcoal Black
 with Houndstooth-patterned inserts
 Standard on SE and SEL



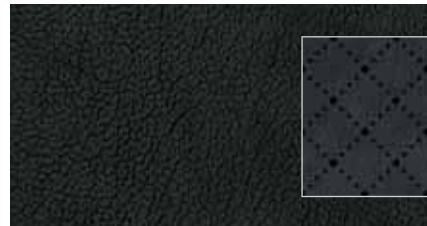
Leather – Medium Light Stone
 Available on SEL



Leather – Charcoal Black
 Available on SEL



Leather – Medium Light Stone with perforated inserts
 Standard on Limited



Leather – Charcoal Black with perforated inserts
 Standard on Limited

Wheels



17" Painted-Aluminum
 Standard on SE



18" Machined-Aluminum
 Standard on SEL



19" Polished-Aluminum
 Standard on Limited



20" Bright Painted-Aluminum
 Available on SEL and Limited



20" Polished
 Available as a Ford Custom Accessory¹

¹Specific tire required. See your local dealer or visit Tech Specs on fordaccessories.com for more details.

Ford Custom Accessories



Interior Soft Cargo Organizer (Large Size)



Interior Cargo Net



Front Illuminated Sill Plates



Katzkin® Leather Seat Covers¹



Plus many other color combinations



Graphics Kit



Sherwood Interior Trim Kit¹



Garmin® Portable Navigation Systems¹



Bi-Directional Remote Start System

- Also available:
- Dual INVISION™ DVD Headrests¹
 - Sherwood Exterior Trim Kit¹
 - Remote Start Systems
 - Vehicle Security System
 - SmartAlert™ GPS Tracking and Recovery¹
 - Interior Lighting Kit
 - Conversation Mirror
 - Spoiler
 - Hood Deflector
 - Side Window Deflectors
 - THULE® Racks, Carriers and Cargo Holders^{1,2}
 - Interior Soft Cargo Organizer (Standard Size)
 - Interior Soft Cargo Cooler Bag
 - Interior Cargo Area Protector
 - Interior Scuff Plates
 - Sportz® SUV Tent¹
 - EchoMaster® HitchScan™ Rear Park Assist Sensor and Hitch Step¹
 - Wheel Locks
 - Trailer Hitch Ball/Draw Bars
 - Wiring Harness
 - Wiper Shaker De-Icer and Debris Cleaner¹
 - Ashcup/Coin Holder/Smoker's Pack
 - All-Weather Floor Mats
- ¹Ford Licensed Accessories.
²Only available for vehicles with roof-rack side rails.
 Garmin is a registered trademark of Garmin Ltd.

To learn more about Ford Custom Accessories and to buy them online, visit fordaccessories.com.

Genuine Ford Accessories will be warranted for whichever provides you the greatest benefit: 12 months or 12,000 miles (whichever occurs first), or the remainder of your Bumper-to-Bumper 3-year/36,000-mile New Vehicle Limited Warranty. Contact your local Ford Dealer for details and a copy of the limited warranty. Ford Licensed Accessories (FLA) are warranted by the accessory manufacturer's warranty. Contact your Ford Dealer for details regarding the manufacturer's limited warranty and/or a copy of the FLA product limited warranty offered by the accessory manufacturer.



THE FACTS ABOUT FORD.



Drive quality.

FACT: On top of earning 8 *Consumers Digest* “**Best Buy**” awards for 2009 models, Ford Motor Company is **unsurpassed** by Toyota and Honda when it comes to quality.¹



Drive green.

FACT: Ford builds the **most fuel-efficient midsize sedan** in America (Fusion Hybrid: 41 mpg city)² and the **most fuel-efficient SUV** on the planet (Escape Hybrid: 34 mpg city).³



Drive safe.

FACT: No other car company offers you more vehicles that have received both 2009 IIHS “**Top Safety Pick**” and NHTSA **5-Star** crash test ratings.⁴



Drive smart.

FACT: The voice-activated **Ford SYNC**® customizable media system and **EcoBoost™ V6 engines** are just a few of the innovative technologies you can only find in a Ford.

Visit fordvehicles.com to learn more.



Drive one.

¹Based on RDA Group's GQRS cumulative survey at 3 months of service in 3 surveys of 2008 MY Ford and competitive owners conducted 9/07-5/08. ²EPA-estimated 23 mpg city/34 hwy., 27 mpg combined, Fusion S I-4 automatic; 41 mpg city/36 hwy., Fusion Hybrid. Actual mileage will vary. Midsize class per R. L. Polk. ³Based on unadjusted city fuel economy from EPA (10/08) and VCA (5/08). 2009 EPA-estimated 34 mpg city/31 hwy. for Escape Hybrid FWD. Excluding vehicles built for Mazda. ⁴Based on NHTSA 5-Star ratings for all 4 crash test categories. Star ratings are part of the U.S. Department of Transportation's Safercar.gov program (www.safercar.gov).