

ESCAPE • EXPLORER SPORT  
EXPLORER SPORT TRAC • EXPLORER  
EXPEDITION • EXCURSION

02







EXPLORER  
SPORT



EXPLORER



EXCURSION



ESCAPE



EXPLORER  
SPORT TRAC



EXPEDITION



NO CURBS NO TRAFFIC  
NO LANE MARKERS  
NO BOUNDARIES

You'll be wakeboarding Lake Tarpon, Florida. Hitting the powder trails at Tuckerman Ravine, New Hampshire. Running the Rubicon (California's, that is) by kayak. Or hauling a room's-worth of framing studs, drywall, and subfloor to make some progress on the vacation house. You want to shake the concrete from your tire treads and get beyond the boundaries you live within most days. From the spirited Escape to the stately Excursion, we've outfitted a Ford sport utility vehicle to make it happen for you. And for 2002, the vehicle that has defined the SUV for years is new and better from the ground up – the all-new Ford Explorer. Wherever and whatever your adventure is, a Ford SUV will transport you outside the dotted lanes and beyond the boundaries.









Though Ford Escape doesn't take up a lot of space in the landscape, it does have a lot of presence. With its muscular dynamic styling, zippy standard and available drivetrains, spacious five-passenger seating, and an interior loaded with functional and convenient features, Escape combines sport and utility to superb effect.

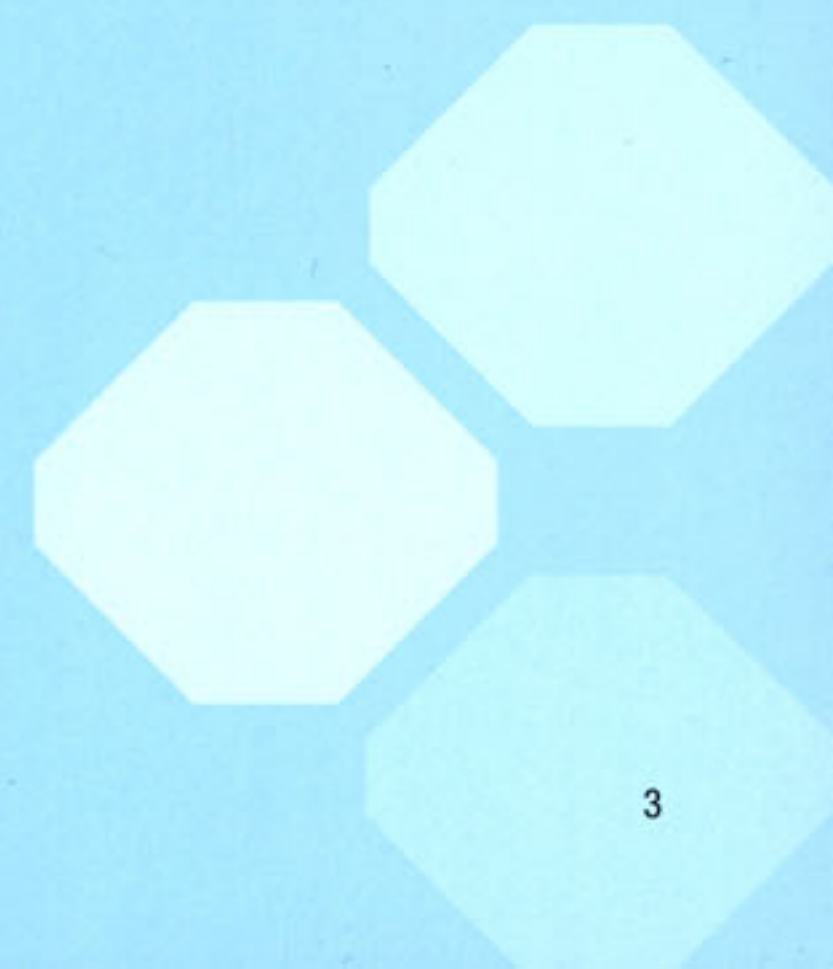
And Escape beats the competition again and again: An available V6 engine, four-wheel independent suspension system, and available side-impact airbags that...well, someday every compact SUV may have them, but Escape offers them now.

Ford Escape. It's big stuff for its smaller size.

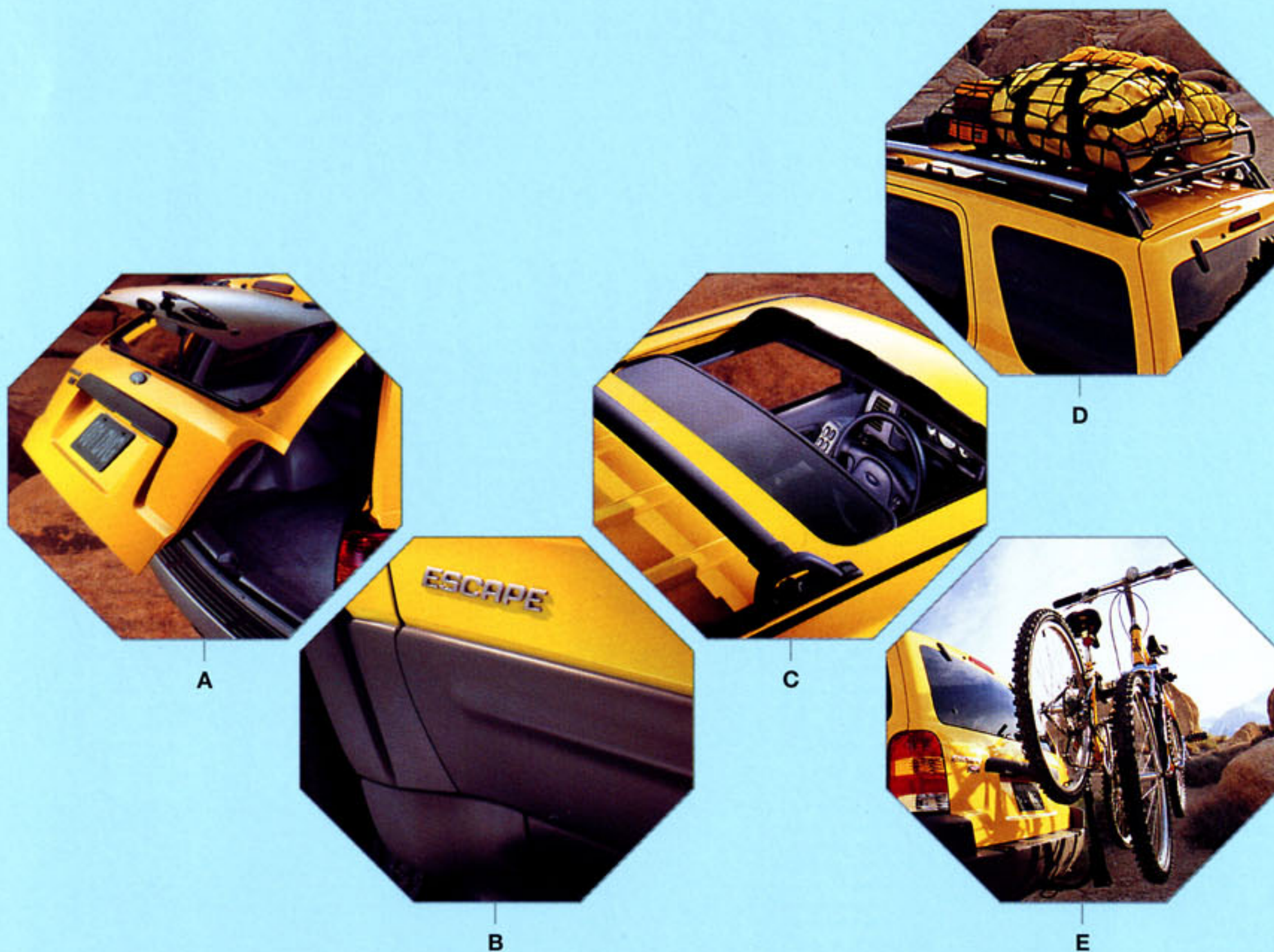
*Always wear your safety belt and secure children in the rear seat.*

**ESCAPE | COMPACT FOOTPRINT. BIG FEATS.**

ESCAPE







## EXTERIOR | FEATURES

**A: TWO WAYS IN |** TWO WAYS TO STASH GEAR, GROCERIES, AND THE REST OF YOUR LIFE: THE REAR GLASS FLIPS UP FOR SMALLER THINGS, AND THE LIFTGATE GIVES YOU WIDE-OPEN ACCESS FOR THE BIG STUFF.

**B: DEFLECT + PROTECT |** RUGGED ISN'T JUST A LOOK: WIDE BODYSIDE CLADDING, ROCKER PANELS AND AVAILABLE WHEEL LIP MOLDINGS PROTECT ESCAPE FROM ON-ROAD AND OFF-ROAD DENTS AND SCRATCHES.

**C: LIGHTEN UP |** DAY AND NIGHT, THE OPTIONAL POWER MOONROOF TILTS OPEN OR RETRACTS TO BREEZES AND BRIGHTNESS. IT INCLUDES AN INTERIOR SHADE AND TINTED GLASS SO YOU CAN ADJUST LIGHT AND AIR TO YOUR TASTE.

**D: LOAD WARRIOR |** IF IT SUITS YOUR GEAR, PACK UP "SAFARI STYLE" WITH THE YAKIMA® LOAD WARRIOR ACCESSORY\*. IT'S A MULTI-FUNCTION SYSTEM THAT CAN HANDLE ANYTHING FROM LUGGAGE TO BIKES TO A CANOE. IT ATTACHES SECURELY TO THE STANDARD ROOF RACK OR XLT SPORT NO BOUNDARIES ROOF RACK.

**E: HITCH TWO RIDES |** THE QUARTER-ROC® BIKE CARRIER ACCESSORY\* FITS INTO THE STANDARD HITCH MOUNT AND HOLDS ONE OR TWO BIKES. BETTER YET, TO ACCESS YOUR CARGO AREA YOU DON'T HAVE TO REMOVE THE ROC — JUST SWING IT DOWN.

\*See dealer to purchase.



ESCAPE XLT SPORT IN DARK SHADOW GREY METALLIC CLEARCOAT.

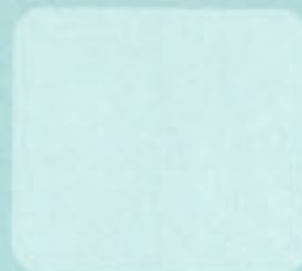




## ESCAPE | NO BOUNDARIES ROOF RACK

Simply ingenious. The No Boundaries Rack System, standard on XLT Sport, does double duty where you need it.

- On the roof, it gives you 100 pounds of capacity, with adjustable crossbars to handle loads of various sizes.
- And if you need additional capacity for gear best handled on the back of Escape, unlock the rack, pull and rotate it down over the liftgate. Snap it into position and you're ready for another 100 lbs. You can carry gear on both racks at the same time.



**RACK IT UP HERE |** THE STANDARD ROOF RACK CAN CARRY UP TO 100 POUNDS. WITH TWO TIE-DOWNS AND TWO ADJUSTABLE CROSSBARS, IT'S ADAPTABLE TO YOUR GEAR.

ESCAPE XLT SPORT IN CHROME YELLOW CLEARCOAT, SHOWN WITH DEALER-INSTALLED ACCESSORIES.







## ESCAPE | INTERIOR

Up front, Escape sports low-back bucket seats with adjustable head restraints. For cargo and seating flexibility, the back seat is a convenient bench (60/40 split in XLT) with a tip-forward/fold-flat feature and removable seat cushions. Everyone can get comfortable with Escape's standard air conditioning and rear floor ventilation ducts, solar tinted glass, power windows, and five-cupholder console. And the rear cargo area has space for anything from beach gear to Dalmations. Pretty great indoors for a great outdoor vehicle.





ESCAPE XLT PREMIUM WITH MEDIUM GRAPHITE LEATHER SEATING SURFACES, SHOWN WITH OPTIONAL EQUIPMENT.









## INTERIOR | FEATURES

**A: 255 HIGH NOTES |** MACH® MP3 MUSIC SYSTEM PLAYS CONVENTIONAL CDs, MP3, AND MIXED MODE DISCS. PLAYS UP TO 255 SONGS - 10 HOURS OF PLAY ON ONE DISC. STANDARD ON XLS SPORT; INCLUDED IN THE XLT MIDNIGHT APPEARANCE PACKAGE.

**B: SORT IT OUT |** THE CARGO ORGANIZER ACCESSORY\* SORTS AND STABILIZES VARIED CARGO.

**C: PLUG IN |** CONVENIENT 12-VOLT CARGO AREA POWERPOINT IN XLT MODELS, SO YOU CAN POWER WHATEVER YOU'LL NEED ON YOUR ADVENTURES.

**D: THE CONCEAL DEAL |** PROTECT YOUR CARGO WITH A RETRACTABLE, HEAVY-DUTY VINYL CARGO SHADE, COLOR-KEYED TO YOUR INTERIOR. STANDARD ON XLT, OPTIONAL ON XLS.

**E: BEST OF BREED |** THE DOG GUARD ACCESSORY\* HELPS KEEP THE VEHICLE NEAT AND GIVES SPOT HIS OWN SPACE. ALSO AVAILABLE: A DOG GUARD CARGO AREA DIVIDER, TO MAKE TWO COMPARTMENTS.

**F: FLOOR SHOW |** DURABLE INTERIOR-MATCHED CARPETED FLOOR MATS, INCLUDED IN XLT AND XLS SPORT, PROTECT BOTH FRONT AND REAR FLOORS.



A



B



C



D



E



F

\*See dealer to purchase.





OXFORD WHITE



SATIN SILVER METALLIC



CHROME YELLOW



BRIGHT RED



### XLT MIDNIGHT APPEARANCE PACKAGE

THINK OF IT AS THE STEALTH EDITION. OUTSIDE: GLOSS BLACK FINISH, GLOSS BLACK CLADDING AND WHEEL-LIP MOLDINGS, ALONG WITH DARK-ACCENTED MACHINED ALUMINUM WHEELS. INSIDE: EBONY INTERIOR, NUDO® EBONY LEATHER SEATING SURFACES, FRONT SIDE-IMPACT AIRBAGS, AND THE LATEST AUDIO TECHNOLOGY: THE MACH® MP3 MUSIC SYSTEM. IT PLAYS BOTH CONVENTIONAL AUDIO CDS AND MP3 DISCS - UP TO 255 TRACKS OR 10 HOURS OF UNINTERRUPTED MUSIC.



**A** | 15" FIVE-SPOKE STYLED STEEL WHEEL. STANDARD ON XLS VALUE AND XLS CHOICE.

**B** | 15" FIVE-SPOKE ALUMINUM ALLOY WHEEL. STANDARD ON XLT CHOICE (4X2). OPTIONAL ON XLS VALUE AND CHOICE.

**C** | 15" SPARKLE SILVER CAST ALUMINUM WHEEL. STANDARD ON XLS SPORT.

**D** | 16" FIVE-SPOKE ALUMINUM ALLOY WHEEL. STANDARD ON XLT CHOICE (4X4), CHOICE 2 (4X2) AND PREMIUM.

**E** | 16" SPORT ALUMINUM ALLOY WHEEL. STANDARD ON XLT SPORT.





DARK HIGHLAND GREEN METALLIC



TRUE BLUE METALLIC



DARK SHADOW GREY METALLIC



BLACK

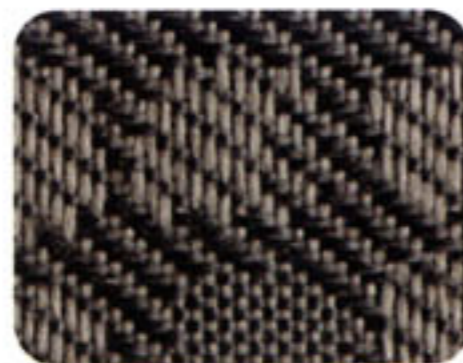
**XLS/XLS SPORT/XLT**  
COLOR+TRIM

	MEDIUM PARCHMENT	MEDIUM GRAPHITE
OXFORD WHITE	*	*
SATIN SILVER METALLIC	*	*
CHROME YELLOW	*	*
BRIGHT RED	*	*
DARK HIGHLAND GREEN METALLIC	*	*
TRUE BLUE METALLIC	*	*
DARK SHADOW GREY METALLIC	*	*
BLACK	*	*

FORD USES CLEARCOAT PAINT FOR BEAUTY AND PROTECTION. COLORS SHOWN ARE REPRESENTATIVE ONLY. SEE YOUR DEALER FOR ACTUAL PAINT/TRIM OPTIONS. VEHICLES SHOWN MAY CONTAIN OPTIONAL EQUIPMENT.



CLOTH AND VINYL-TRIMMED FRONT LOW-BACK BUCKET SEATS WITH HEAD RESTRAINTS IN MEDIUM PARCHMENT OR MEDIUM GRAPHITE. STANDARD ON XLS.



PREMIUM CLOTH FRONT LOW-BACK BUCKET SEATS WITH HEAD RESTRAINTS IN MEDIUM PARCHMENT OR MEDIUM GRAPHITE. STANDARD ON XLT CHOICE, CHOICE 2 AND SPORT.

**XLT SPORT**  
COLOR+TRIM

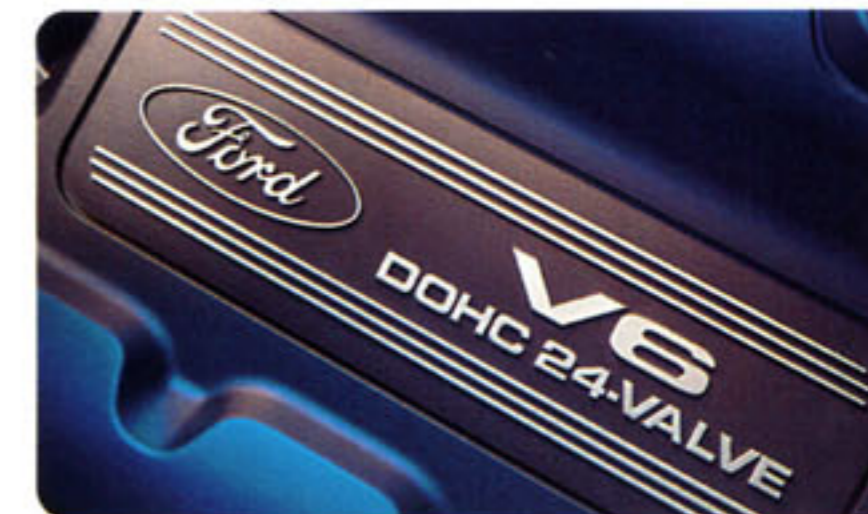
	MEDIUM PARCHMENT	MEDIUM GRAPHITE
CHROME YELLOW	*	*
BRIGHT RED	*	*
DARK SHADOW GREY METALLIC	*	*
BLACK	*	*



FRONT LOW-BACK BUCKET SEATS WITH LEATHER SEATING SURFACES AND HEAD RESTRAINTS IN MEDIUM PARCHMENT OR MEDIUM GRAPHITE. STANDARD ON XLT PREMIUM. OPTIONAL ON XLT CHOICE (4X4), CHOICE 2 AND SPORT. EBONY STANDARD WITH XLT MIDNIGHT APPEARANCE PACKAGE.



**A: FOUR-STRONG** | THE 2.0L ZETEC I4 HAS 135 FT-LB OF TORQUE AT 4500 RPM FOR POWERFUL PULL. STANDARD ON XLS VALUE AND SPORT.



**B: V6 VELOCITY** | THE AVAILABLE 3.0L DURATEC V6 ENGINE INCREASES THE POWER TO 196 FT-LB OF TORQUE AT 4700 RPM AND 201 HORSEPOWER. STANDARD ON XLT AND XLS CHOICE.



**Standard Equipment on Escape 4x2 and 4x4:**

**Mechanical**

- 4-Cylinder Zetec Engine
- 5-Speed Manual Transmission
- Front Wheel Drive (4x2)
- Control Trac II™ Automatic 4WD (4x4)
- 4-Wheel Independent Suspension
- 15" Steel Wheels
- P225/70R15 All-Season BSW Tires

- Power Brakes
- Power Steering

**Safety/Security**

- Airbags – Second Generation Driver and Front Passenger
- Battery Saver
- Child Safety Door Locks (Rear Doors)
- Lower and Tether Anchors for Child Safety Seats
- Securilock™ Passive Anti-Theft System
- Side Intrusion Door Beams

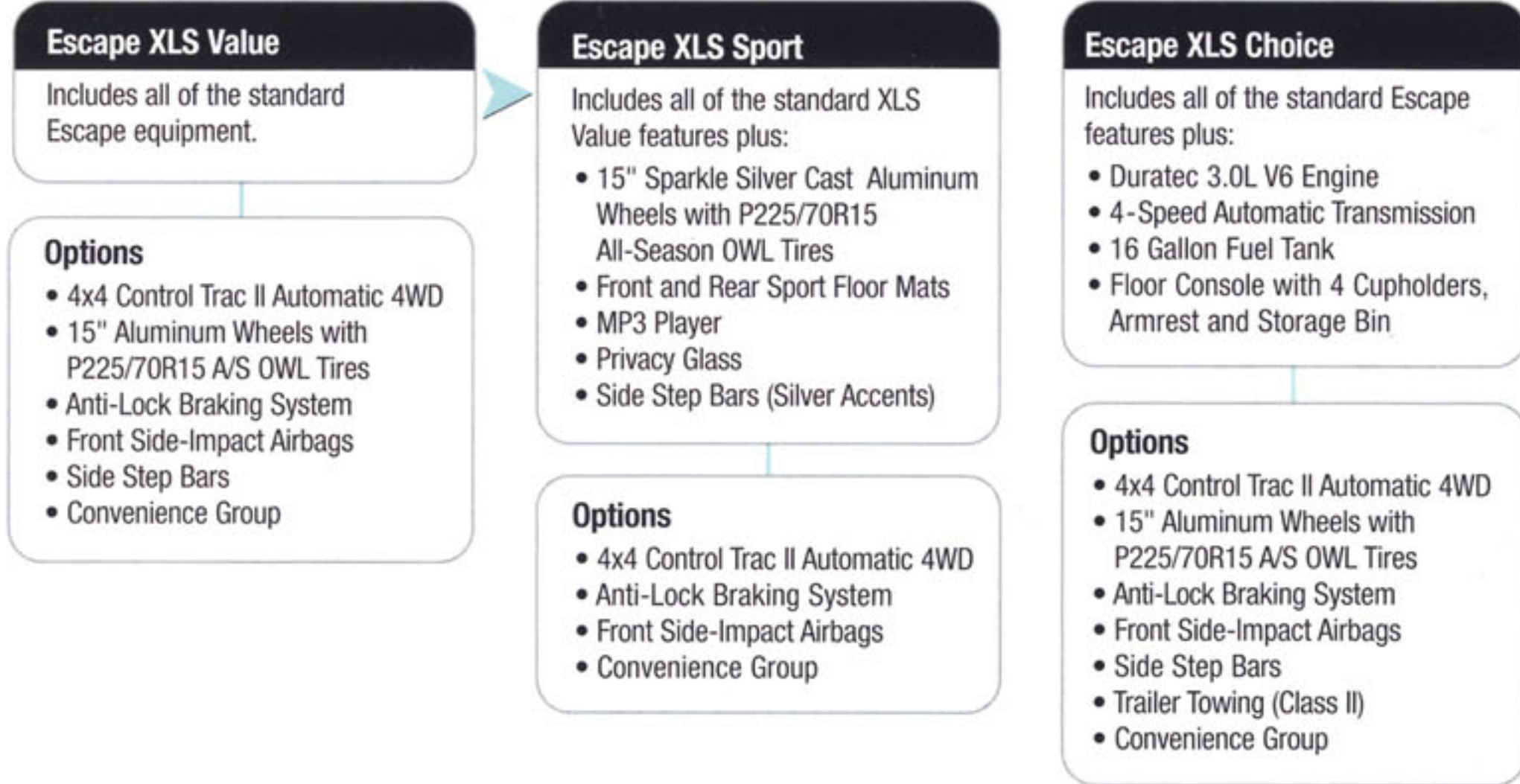
**Interior**

- 5-Passenger Seating
- Front Low-Back Bucket Seats with Head Restraints
- Rear Bench Seat with Tip-Fold-Flat Latch
- Air Conditioning

- AM/FM Single CD/Cassette with Clock and 4 Speakers
- Assist Handles
- Automatic Headlamp Off Delay
- Cargo Floor Hooks (4)
- Floor Console with 5 Cupholders and Storage Bin
- Instrument Cluster – White Gauges
- Powerpoints (2)
- Power Windows, Door Locks, Mirrors
- Rear Floor Heat Ducts
- Remote Keyless Entry
- Removable Rear Seat Cushion
- Tilt Steering Wheel

**Exterior**

- 15 Gallon Fuel Tank
- Roof Rack with 2 Horizontal Bars
- Solar Tint Side and Rear Glass
- Wiper/Washer – Front Variable Intermittent
- Wiper/Washer – Rear 2-Speed with Defroster



Following publication of the catalog, certain changes in standard equipment, options and the like, or product delays, may have occurred which would not be included in these pages. Your Ford Dealer is the best source for up-to-date information. Ford Division reserves the right to change product specifications at any time without incurring obligations. Features shown may be offered only in combination with other options or subject to additional ordering requirements or limitations. Competitive comparisons based on publicly available information at time of printing.



**ESCAPE XLS**



**Leather Comfort Group:** Leather Seating Surfaces, Leather-Wrapped Steering Wheel, Overhead Console with Dual Storage Bins, Front Door Map Pockets and Front Passenger Under-Seat Storage Tray

**Escape XLT 4x2 Choice**

Includes all of the standard Escape features plus:

- Duratec 3.0L V6 Engine
- 4-Speed Automatic Transmission
- 15" Aluminum Wheels with P225/70R15 All-Season OWL Tires
- 16 Gallon Fuel Tank
- AM/FM 6-Disc In-Dash CD (Excludes Cassette)
- Anti-Lock Braking System
- Floor Console with 4 Cupholders, Armrest and Storage Bin
- Fog Lamps
- Power Driver's Seat
- Premium Cloth Seats
- Rear 60/40 Split Bench with Tip-Fold-Flat Latch
- Privacy Glass
- Wheel-Lip Moldings
- Convenience Group

**Options**

- AM/FM Single CD/Cassette
- Front Side-Impact Airbags
- MACH Audio System with 6-Disc In-Dash CD and 7 Speakers
- Power Moonroof
- Side Step Bars
- Trailer Towing (Class II)

**Escape XLT 4x2 Choice 2**

Includes all of the standard XLT 4x2 Choice features plus:

- 16" Aluminum Wheels with P235/70R16 All-Season OWL Tires

**Options**

- AM/FM Single CD/Cassette
- Front Side-Impact Airbags
- MACH Audio System with 6-Disc In-Dash CD and 7 Speakers
- Power Moonroof
- Side Step Bars
- Trailer Towing (Class II)
- Leather Comfort Group

**Escape XLT 4x2 Premium**

Includes all of the standard XLT 4x2 Choice 2 features plus:

- Power Moonroof
- Leather Comfort Group

**Options**

- AM/FM Single CD/Cassette
- Front Side-Impact Airbags
- MACH Audio System with 6-Disc In-Dash CD and 7 Speakers
- Side Step Bars
- Trailer Towing (Class II)

**Optional Midnight Appearance Package** (see page 12) includes:

- Black Painted Fascias, Body Cladding and Wheel-Lip Moldings
- Ebony NUDO® Leather Seating Surfaces
- Front Side-Impact Airbags
- MACH MP3 Music System
- 16" Bright Machined Aluminum Wheels with Dark Accents



**ESCAPE XLT 4X2**

**Escape XLT 4x4 Choice**

Includes all of the standard Escape features plus:

- 4x4 Control Trac II Automatic 4WD
- Duratec 3.0L V6 Engine
- 4-Speed Automatic Transmission
- 16" Aluminum Wheels with P235/ 70R16 All-Season OWL Tires
- 16 Gallon Fuel Tank
- AM/FM 6-Disc In-Dash CD (Excludes Cassette)
- Anti-Lock Braking System
- Floor Console with 4 Cupholders, Armrest and Storage Bin
- Fog Lamps
- Power Driver's Seat
- Premium Cloth Seats
- Rear 60/40 Split Bench with Tip-Fold-Flat Latch
- Privacy Glass
- Trailer Towing (Class II)
- Wheel-Lip Moldings
- Convenience Group

**Options**

- AM/FM Single CD/Cassette
- Front Side-Impact Airbags
- MACH Audio System with 6-Disc In-Dash CD and 7 Speakers
- Power Moonroof
- Side Step Bars
- Leather Comfort Group

**Escape XLT 4x4 Sport**

Includes all of the standard XLT 4x4 Choice features plus:

- 16" Sport Aluminum Wheels with P235/70R16 All-Terrain OWL Tires
- Front and Rear Sport Floor Mats
- No Boundaries Roof Rack
- Side Step Bars

**Options**

- AM/FM Single CD/Cassette
- Front Side-Impact Airbags
- MACH Audio System with 6-Disc In-Dash CD and 7 Speakers
- Leather Comfort Group



**ESCAPE XLT SPORT**

**Escape XLT 4x4 Premium**

Includes all of the standard XLT 4x4 Choice features plus:

- Power Moonroof
- Leather Comfort Group

**Options**

- AM/FM Single CD/Cassette
- Front Side-Impact Airbags
- MACH Audio System with 6-Disc In-Dash CD and 7 Speakers
- Side Step Bars

**Optional Midnight Appearance Package** (see page 12) includes:

- Black Painted Fascias, Body Cladding and Wheel-Lip Moldings
- Ebony NUDO® Leather Seating Surfaces
- Front Side-Impact Airbags
- MACH MP3 Music System
- 16" Bright Machined Aluminum Wheels with Dark Accents







Once you get your schedule and your priorities coordinated, get out and drive. Explorer Sport's lean, athletic two-door styling looks equally good running down pavement and in roadless expanses. Inside, comfort and convenience go hand-in-glove. Under the hood, a 4.0L SOHC V6 delivers 203 horses with power to spare – and as a low emissions vehicle, it's easier on the air too. And the optional 4x4 system is ready when you are to leave the road behind.

**EXPLORER SPORT** | TO-DO LIST:  
BALANCE PORTFOLIO.  
PICK UP THE LAUNDRY.  
ROAM THE EARTH.

EXPLORER SPORT





A



F



C



E



B



D

## EXTERIOR | FEATURES

**A: ROAD RAILS |** STANDARD ROOF RAILS PACK UP TO 100 POUNDS. ADD DEALER-INSTALLED CROSS-BARS\* TO CARRY THINGS LIKE SKIS, BIKES OR THE YAKIMA® LUGGAGE BASKET\* SHOWN HERE.

**B: FOOTLIGHTS |** STANDARD POWER SIDE MIRRORS WITH OPTIONAL SECURITY APPROACH LAMPS ILLUMINATE THE GROUND AROUND THE FRONT DOORS.

**C: RE:CYCLES |** ROOFTOP FRAME MOUNT BIKE CARRIER ACCESSORY\* BY YAKIMA® FITS THE AVAILABLE ROOF RACK. IT FEATURES A PADDED LOCKING DOWNTUBE ARM AND CABLE GUIDES TO PROTECT BRAKE AND SHIFTER CABLES.

**D: KAYAK RACK |** YAKIMA® KAYAK CARRIER ACCESSORY\* INSTALLS WITHOUT TOOLS ON THE ROOF RAILS AND CARRIES UP TO FOUR KAYAKS. REQUIRES SEPARATELY AVAILABLE TIE-DOWNS AND CROSSBARS.

**E: FAST START |** THE REMOTE START ACCESSORY\* LETS YOU START YOUR EXPLORER SPORT FROM UP TO 500 FEET AWAY. IT ALSO CAN TURN ON INTERIOR LIGHTS, FLASH HEAD-LAMPS AND SOUND THE HORN IN AN EMERGENCY.

**F: TURBO TABLE |** QUICK AND EASY — PUT UP A TABLE FOR TAILGATE PARTIES OR A ROADSIDE PICNIC. THE STURDY TRAILGATE® TABLE ACCESSORY\* IS HEIGHT-ADJUSTABLE AND FITS INTO THE AVAILABLE HITCH RECEIVER.

\*See dealer to purchase.











EXPLORER SPORT PREMIUM 4X4 IN SILVER BIRCH METALLIC CLEARCOAT, SHOWN WITH OPTIONAL EQUIPMENT.

## INTERIOR | FEATURES

**A: EAR CONDITIONING |** THE OPTIONAL 290-WATT PIONEER™ SOUND SYSTEM PUMPS OUT THE VOLUME FROM THE AM/FM STEREO AND 6-DISC IN-DASH CD CHANGER THROUGH 7 SPEAKERS.

**B: NET EFFECT |** STUFF DOESN'T ROLL OR SLIDE AROUND IF YOU PUT IT UNDER THE ACCESSORY CARGO NET\*. THE CORNERS HOOK TO THE CARGO FLOOR TIE-DOWNS.

**C: ENLIGHTENING |** THE OPTIONAL OVERHEAD CONSOLE FEATURES AN OUTSIDE TEMPERATURE DISPLAY, MAP/READING LIGHTS, A COMPASS AND SUNGLASS COMPARTMENT.

**D: SHINE IN |** LET THE SUN SHINE IN — OR THE MOON. YOUR CHOICE. THE OPTIONAL POWER MOONROOF OPERATES BY AN OVERHEAD BUTTON, TILTING OPEN OR RETRACTING FULLY, AND INCLUDES A FULL SHADE TOO.

**E: STORE FOR THE FLOOR |** THE FRONT FLOOR CONSOLE IS STANDARD, SO YOU'LL HAVE A STORAGE BIN, COINHOLDER, PAD AND PENCIL HOLDER, A REMOVABLE STORAGE BAG AND TWO CUPHOLDERS FOR THE FRONT ROW, TWO FOR THE BACK.

**F: GUEST RELATIONS |** HAVE PASSENGERS IN THE BACK? GIVE THEM CONTROL: THE AVAILABLE HIGH SERIES REAR CONTROL CONSOLE HAS CLIMATE AND AUDIO SYSTEM CONTROLS, AS WELL AS HEADPHONE JACKS.

\*See dealer to purchase.



A



B



E



C



F



D



## EXPLORER SPORT | INTERIOR

Like a homey cabin in the woods, the Explorer Sport interior is comfortably appointed to let you settle right in. Amenities at hand include power windows, door locks and outside mirrors, an AM/FM stereo with cassette and CD player, air conditioning, and dome/map lights both front and back – all standard. You'll be comfortable with this too: Explorer Sport features driver and front passenger airbags<sup>Ⓞ</sup>. Front side-impact airbags are also available.

<sup>Ⓞ</sup>Always wear your safety belt and secure children in the rear seat.



EXPLORER SPORT PREMIUM WITH OPTIONAL DARK GRAPHITE LEATHER SEATING SURFACES.

EXPLORER SPORT PREMIUM 4x4 INSTRUMENT PANEL WITH OPTIONAL DARK GRAPHITE LEATHER SEATING SURFACES AND PIONEER™ SOUND SYSTEM WITH 6-DISC IN-DASH CD CHANGER.











OXFORD WHITE



SILVER BIRCH METALLIC



HARVEST GOLD METALLIC



ZINC YELLOW



TOREADOR RED METALLIC



ESTATE GREEN METALLIC



**A** | 16" FIVE-SPOKE CAST ALUMINUM WHEEL. STANDARD ON VALUE AND CHOICE.

**B** | 16" BRIGHT CAST ALUMINUM WHEEL. STANDARD ON PREMIUM. OPTIONAL ON CHOICE.

**EXPLORER SPORT**  
COLOR+TRIM

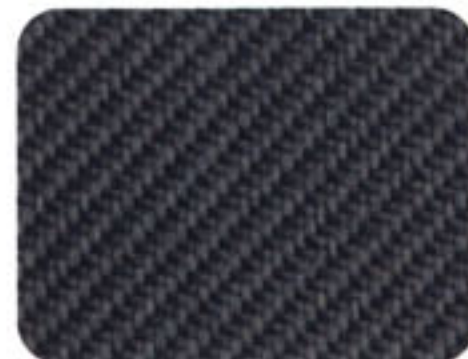
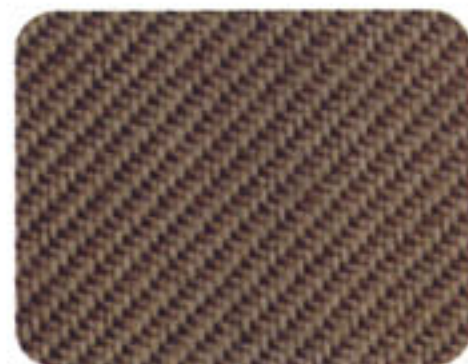
	MEDIUM PRAIRIE TAN	DARK GRAPHITE
OXFORD WHITE	*	*
SILVER BIRCH METALLIC		*
HARVEST GOLD METALLIC	*	
ZINC YELLOW		*
TOREADOR RED METALLIC	*	*
ESTATE GREEN METALLIC	*	
ASPEN GREEN METALLIC	*	*
TRUE BLUE METALLIC		*
EBONY	*	*

FORD USES CLEARCOAT PAINT FOR BEAUTY AND PROTECTION. COLORS SHOWN ARE REPRESENTATIVE ONLY. SEE YOUR DEALER FOR ACTUAL PAINT/TRIM OPTIONS. VEHICLES SHOWN MAY CONTAIN OPTIONAL EQUIPMENT.



**POWER/PLAY** | POWERFUL AND CLEAN, THE STANDARD 4.0L SOHC V6 ENGINE DELIVERS 203 HP AT 5250 RPM AND 237 FT-LB OF TORQUE AT 3000 RPM. LOW EMISSIONS MAKE IT ENVIRONMENTALLY RESPONSIBLE.

**ENGINE POWER** |



FRONT CLOTH CAPTAIN'S CHAIRS WITH TIP/SLIDE FUNCTION IN MEDIUM PRAIRIE TAN OR DARK GRAPHITE. STANDARD ON VALUE AND CHOICE.



FRONT CLOTH HIGH-BACK BUCKET SEATS WITH SIDE AIRBAGS, IN MEDIUM PRAIRIE TAN OR DARK GRAPHITE. OPTIONAL ON CHOICE AND PREMIUM. AVAILABLE WITH LEATHER SEATING SURFACES ON PREMIUM.



FRONT BUCKET SEATS WITH ADJUSTABLE HEAD RESTRAINTS IN MEDIUM PRAIRIE TAN OR DARK GRAPHITE. STANDARD ON PREMIUM. OPTIONAL ON CHOICE. AVAILABLE WITH LEATHER SEATING SURFACES ON PREMIUM.

**SEATS+FABRICS** |

**WHEELS+TIRES** |





ASPEN GREEN METALLIC

TRUE BLUE

EBONY

**Standard Equipment on Explorer Sport 4x2 and 4x4:**

**Mechanical**

- 4.0L SOHC V6 Engine
- 5-Speed Manual Transmission
- Rear Wheel Drive (4x2)
- Shift-on-the-Fly 4WD System (4x4)
- 16" 5-Spoke Cast Aluminum Wheels (16" Spare)
- P235/70R16 All-Season OWL Tires
- Power Steering
- Power 4-Wheel Disc Brakes
- Stabilizer Bars (Front and Rear)
- Suspension – Front Independent Short/Long Arm; Rear 2-Stage Leaf Springs
- Trailer Tow Wire Harness (4-Pin Class II)

**Safety/Security**

- Airbags – Driver and Front Passenger
- Anti-Lock Braking System
- Battery Saver
- Child Safety Locks (Rear Doors)
- Tether Anchors for Child Safety Seats
- Securilock™ Passive Anti-Theft System
- Side-Impact Door Beams

**Interior**

- Front Cloth Captain's Chairs with Tip/Slide Function

- 50/50 Fold-Flat Rear Bench Seat with Adjustable Head Restraints
- Air Conditioning
- Assist Handles
- Cargo Area Door Lock
- Floor Console with Front and Rear Cupholders, Padded Armrest, Removable Soft Pack Storage Bag and Convenience Clip
- Floor Mats (Front and Rear)
- Powerpoint
- Power Windows, Door Locks, Mirrors
- Premium AM/FM Stereo with CD/Cassette (60-Watt) and 4 Speakers
- Tachometer

**Exterior**

- 16.8 Gallon Fuel Tank
- Liftgate with Flip-Up Glass
- Privacy Glass (Rear Quarter and Rear Window)
- Roof Rails
- Solar Tint Glass
- Wiper/Washer – Front Speed-Sensitive Intermittent
- Wiper/Washer – Rear Intermittent with Defroster

**Explorer Sport Value**

Includes all of the standard Explorer Sport equipment.

**Options**

- 4x4 Shift-on-the-Fly
- 5-Speed Automatic Transmission
- Limited Slip Rear Axle
- Convenience Group

**Explorer Sport Choice**

Includes all of the standard Explorer Sport Value features plus:

- 5-Speed Automatic Transmission
- Convenience Group

**Options**

- 4x4 Shift-on-the-Fly
- AM/FM Stereo with 6-Disc In-Dash CD/Pioneer™ 290-Watt Sound System
- Front Side-Impact Airbags – Includes Cloth High-Back Front Buckets and 6-Way Power Driver's Seat
- Limited Slip Rear Axle
- Comfort Group
- Premium Sport Group

**Explorer Sport Premium**

Includes all of the standard Explorer Sport Choice features plus:

- P255/70R16 OWL All-Terrain Tires (4x4)
- Comfort Group
- Premium Sport Group

**Options**

- 4x4 Shift-on-the-Fly
- AM/FM Stereo with 6-Disc In-Dash CD/Pioneer™ 290-Watt Sound System
- Front Side-Impact Airbags – Includes Cloth High-Back Front Buckets and 6-Way Power Driver's Seat
- Low-Back Front Buckets with Leather Seating Surfaces and Driver/Passenger Manual Lumbar
- Limited Slip Rear Axle
- Power Moonroof

**Convenience Group:** Autolock/Relock (Automatic Transmission), Cargo Shade, Leather-Wrapped Steering Wheel, Remote Keyless Entry w/Keypad, Security Approach Lamps (Side-Mirror Mounted), Speed Control, Tilt Steering

**Comfort Group:** 6-Way Power Driver's Seat, Auto Headlamps, Cloth Low-Back Bucket Seats with Adjustable Head Restraints, Electrochromic Mirror, High Series Floor Console with Rear Climate/Audio Controls, Overhead Console with Outside Temperature and Compass

**Premium Sport Group:** 16" Bright Cast Aluminum Wheels, P255/70R16 OWL All-Terrain Tires (4x4), Fog Lamps, Front Tow Hooks (4x4), Side Step Bars

Following publication of the catalog, certain changes in standard equipment, options and the like, or product delays, may have occurred which would not be included in these pages. Your Ford Dealer is the best source for up-to-date information. Ford Division reserves the right to change product specifications at any time without incurring obligations. Features shown may be offered only in combination with other options or subject to additional ordering requirements or limitations. Competitive comparisons based on publicly available information at time of printing.







EXPLORER SPORT TRAC PREMIUM 4X4 IN HARVEST GOLD METALLIC CLEARCOAT.

Explorer Sport Trac rewrites the SUV rulebook. Of course it's built for rugged action, and available in both 4x2 and 4x4. And of course its cabin generously accommodates five. It's there that any resemblance to conventional SUVs ends, and something completely different begins. Namely, an open cargo bed, made of a tough, corrosion-proof and dent-resistant sheet molded composite. It's perfect for loading up outdoor sporting gear. Or furniture. Or building supplies. And the optional Cargo Cage expands the possibilities by extending the bed to 6 feet. And with the standard low-emission 210-hp 4.0L SOHC V6 engine, Sport Trac just romps away from the SUV crowd.

**EXPLORER SPORT TRAC | 4 X FLOOR IT.**

EXPLORER SPORT TRAC







A



B



E



D



C



F

## EXTERIOR | FEATURES

**A: TOW HOOKS** | AVAILABLE FRONT TOW HOOKS PROVIDE TOUGH LOOKS AND SAFE ATTACHMENT POINTS FOR 4X4 CHOICE AND PREMIUM MODELS.

**B: DEEP DURABILITY** | AN INDUSTRY FIRST: OUR ALL-COMPOSITE CARGO BED IS TOUGH, SCRATCH-RESISTANT, CORROSION-PROOF AND LIGHTER THAN STEEL. SAY GOODBYE TO BEDLINERS ON THIS VEHICLE.

**C: LOAD WARRIOR** | PACK YOUR GEAR "SAFARI STYLE" WITH THE YAKIMA® LOAD WARRIOR ACCESSORY RACK\*. THE MULTI-FUNCTION SYSTEM ATTACHES SECURELY TO THE STANDARD SPORT TRAC ROOF RAILS AND DEALER-INSTALLED CROSSBARS.

**D: TIE RIG** | THREE BED RAIL CLEATS ON EACH SIDE OF THE CARGO BED AND FOUR INSIDE THE BOX PROVIDE STRONG TIE-DOWN POINTS. EACH IS CAPABLE OF SECURING 700 LBS.

**E: COVER STORY** | IN ADDITION TO THE HARD, FOLDING, LOCKABLE TONNEAU COVER (PG. 31), YOU CAN ACCESSORIZE YOUR SPORT TRAC WITH A SOFT TONNEAU, A ONE PIECE COLOR-KEYED HARD TONNEAU OR A CAP\*.

**F: POWER UP** | ELECTRIC GEAR — LIGHTS, GPS UNITS, NOTEBOOK COMPUTERS AND AIR PUMPS — CAN DRAW POWER FROM THE CARGO BED'S 12V POWERPOINT.

\*See dealer to purchase.









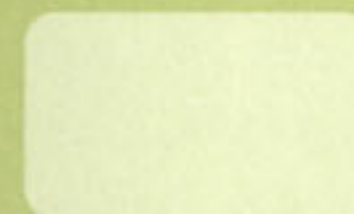




EXPLORER SPORT TRAC PREMIUM 4X4 IN ZINC YELLOW CLEARCOAT, SHOWN WITH OPTIONAL CARGO CAGE BED EXTENDER.

## EXPLORER SPORT TRAC | CARGO VERSATILITY

Sport Trac's entirely unconventional cargo system gives you a broad range of carrying capacities: The optional Cargo Cage has 180° of range, so it can fold in as a retainer for shifting or taller cargo, or fold back (with the tailgate lowered) to extend the available bed length to 6 feet. The optional foldable and lockable hard tonneau cover lets you open up as much of the cargo bed as you want – and, conversely, cover it all at will, to protect your gear from the elements.





## EXPLORER SPORT TRAC | INTERIOR

Explorer Sport Trac has room for five. It also has versatility for two – in case what you really need is space to carry more. In that case, the 60/40 split rear bench can be folded flat to make a convenient load floor. The optional Comfort Group (standard on Premium) adds low-back front buckets with a 6-way power driver's seat, an overhead console with compass, outside temperature display, automatic headlamps, electrochromic rearview mirror, and a floor console featuring rear climate/audio controls. Available on the Premium: leather seating surfaces with front-seat lumbar.













## INTERIOR | FEATURES

**A: TONAL CENTER |** THE TRAC-TUNED, OPTIONAL 290-WATT PIONEER™ SOUND SYSTEM PUMPS OUT THE VOLUME FROM THE AM/FM STEREO AND 6-DISC IN-DASH CD CHANGER THROUGH 7 SPEAKERS.

**B: INFO CENTRAL |** BACK-LIT, WHITE-FACED ANALOG GAUGES LOOK GOOD AND RELAY THE CRUCIAL INFORMATION AT A GLANCE. INCLUDES TACH AND TRIP ODOMETER.

**C: CROSSBREEZE |** TAP THE CONTROL KNOB, AND THE STANDARD POWER REAR WINDOW LOWERS A COUPLE INCHES; TWIST AND IT LOWERS ALL THE WAY. ALSO FEATURES AN ANTI-PINCH SENSOR THAT STOPS THE WINDOW FROM CLOSING IF AN OBJECT IS IN THE WAY.

**D: DIRTBUSTERS |** SPORT TRAC'S FLOORING IS MADE OF WASHABLE RUBBER FOR EASY CLEAN-UP. BERBER MATS ARE ALSO STANDARD.

**E: SKYLIGHT |** THE POWER MOONROOF LETS YOU BRING IT IN THROUGH THE TOP. IT'S EQUIPPED WITH AN INTERIOR SHADE. OPTIONAL ON PREMIUM.

**F: REMOTE START |** STAND BACK — WAY BACK — UP TO 500 FEET BACK. YOU CAN STILL START YOUR SPORT TRAC WITH THE ACCESSORY REMOTE START\*. THIS IS IN ADDITION TO THE KEYLESS REMOTE ENTRY ALREADY STANDARD ON CHOICE AND PREMIUM.

\*See dealer to purchase.



A



B



E



C



D



F





OXFORD WHITE



SILVER BIRCH METALLIC



HARVEST GOLD METALLIC



ZINC YELLOW



TOREADOR RED METALLIC



ESTATE GREEN METALLIC



A



B

**A** | 16" FIVE-SPOKE CAST ALUMINUM WHEELS. STANDARD ON VALUE AND CHOICE.

**B** | 16" BRIGHT CAST ALUMINUM WHEELS. STANDARD ON PREMIUM. OPTIONAL ON CHOICE.

**EXPLORER SPORT TRAC**  
COLOR+TRIM

	MEDIUM PRAIRIE TAN	DARK GRAPHITE
OXFORD WHITE	*	*
SILVER BIRCH METALLIC		*
HARVEST GOLD METALLIC	*	
ZINC YELLOW		*
TOREADOR RED METALLIC	*	*
ESTATE GREEN METALLIC	*	
ASPEN GREEN METALLIC	*	*
TRUE BLUE METALLIC		*
EBONY	*	*

FORD USES CLEARCOAT PAINT FOR BEAUTY AND PROTECTION. COLORS SHOWN ARE REPRESENTATIVE ONLY. SEE YOUR DEALER FOR ACTUAL PAINT/TRIM OPTIONS. VEHICLES SHOWN MAY CONTAIN OPTIONAL EQUIPMENT.

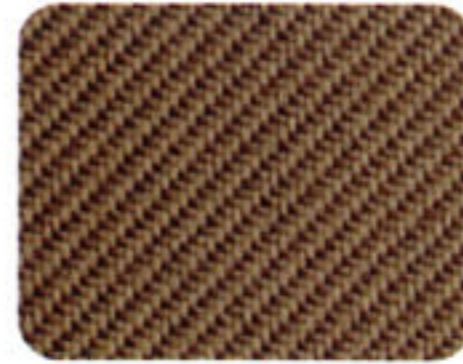


**POWER TO GO** | AND PLENTY OF IT: THE STANDARD 4.0L SOHC V6 ENGINE POWERS UP WITH 210 HP AT 5200 RPM AND 240 FT-LB TORQUE AT 3000 RPM. SO CLEAN IT MAKES EXPLORER SPORT TRAC AN EPA-CERTIFIED LOW EMISSIONS VEHICLE.

**ENGINE POWER** |



FRONT CLOTH CAPTAIN'S CHAIRS WITH TIP/SLIDE FUNCTION IN MEDIUM PRAIRIE TAN OR DARK GRAPHITE. STANDARD ON VALUE AND CHOICE.



CLOTH LOW-BACK FRONT BUCKET SEATS WITH ADJUSTABLE HEAD RESTRAINTS, IN MEDIUM PRAIRIE TAN OR DARK GRAPHITE. STANDARD ON PREMIUM. OPTIONAL ON CHOICE.



FRONT LOW-BACK BUCKETS WITH LEATHER SEATING SURFACES IN MEDIUM PRAIRIE TAN OR DARK GRAPHITE. OPTIONAL ON PREMIUM.

**SEATS+FABRICS** |





ASPEN GREEN METALLIC

TRUE BLUE METALLIC

EBONY

**Convenience Group:** Autolock/Relock (Automatic Transmission), Leather-Wrapped Steering Wheel, Remote Keyless Entry with Keypad, Speed Control, Tilt Steering

**Comfort Group:** 6-Way Power Driver's Seat, Auto Headlamps, Cloth Low-Back Bucket Seats with Adjustable Head Restraints, Electrochromic Mirrors, High Series Floor Console with Rear Climate/Audio Controls, Overhead Console with Outside Temperature and Compass

**Premium Sport Group:** 16" Bright Cast Aluminum Wheels, P255/70R16 OWL All-Terrain Tires, Fog Lamps, Front Tow Hooks (4x4), Side Step Bars

**Standard Equipment on Explorer Sport Trac 4x2 and 4x4:**

**Mechanical**

- 4.0L SOHC V6 Engine
- 5-Speed Manual Transmission
- Rear Wheel Drive (4x2)
- 4WD Shift-on-the-Fly (4x4)
- Suspension – Front Independent Short/Long Arm; Rear 2-Stage Leaf Springs
- 16" 5-Spoke Cast Aluminum Wheels (16" Steel Spare)
- P235/70R16 All-Season OWL Tires
- Power Brakes and Power Steering
- Skid Plates – Transfer Case (4x4)
- Stabilizer Bars (Front and Rear)
- Trailer Tow Wire Harness (4-Pin Class II)

- Air Conditioning
- Assist Handles
- Floor Console with Front and Rear Cupholders, Padded Armrest, Removable Soft Pack Storage Bag and Convenience Clip
- Floor Mats (Berber, Front and Rear)
- Power Points – Instrument Panel and Cargo Area
- Power Rear Window
- Power Windows, Door Locks, Mirrors
- Premium AM/FM Stereo with CD/Cassette (60-Watt) and 4 Speakers
- Tachometer

**Safety/Security**

- Airbags<sup>◇</sup> – Driver and Front Passenger
- Anti-Lock Braking System
- Battery Saver
- Child Safety Locks (Rear Door)
- Lower Anchors for Child Safety Seats
- Securilock™ Passive Anti-Theft System
- Side Impact Door Beams

**Exterior**

- 22.4 Gallon Fuel Tank
- Composite Material Cargo Bed
- Privacy Glass (Rear Doors and Rear Window)
- Roof Rails (Black)
- Solar Tint Glass
- Tie Downs (10)
- Wiper/Washer – Front Speed-Sensitive Intermittent

**Interior**

- Front Cloth Captain's Chairs
- 60/40 Fold-Flat Rear Bench Seat with Adjustable Head Restraints

**Explorer Sport Trac Value**

Includes all of the standard Explorer Sport Trac features.

**Options**

- 4x4 Shift-on-the-Fly
- 5-Speed Automatic Transmission
- 3.73 Limited Slip Rear Axle
- Cargo Cage Bed Extender
- Hard Tonneau Cover
- Convenience Group

**Explorer Sport Trac Choice**

Includes all of the standard Explorer Sport Trac Value features plus:

- 5-Speed Automatic Transmission
- Convenience Group

**Options**

- 4x4 Shift-on-the-Fly
- 3.73 Limited Slip Rear Axle
- 4.10 Limited Slip Rear Axle (Requires Premium Sport Group)
- 290-Watt 6-Disc In-Dash CD Pioneer™ Sound System with 7 Speakers
- Cargo Cage Bed Extender
- Hard Tonneau Cover
- Comfort Group
- Premium Sport Group

**Explorer Sport Trac Premium**

Includes all of the standard Explorer Sport Trac Choice features plus:

- Comfort Group
- Premium Sport Group

**Options**

- 4x4 Shift-on-the-Fly
- 4.10 Limited Slip Rear Axle
- 290-Watt 6-Disc In-Dash CD Pioneer™ Sound System with 7 Speakers
- Cargo Cage Bed Extender
- Hard Tonneau Cover
- Power Moonroof
- Leather Seating Surfaces and Driver/Passenger Manual Lumbar

<sup>◇</sup> Always wear your safety belt and secure children in the rear seat. Following publication of the catalog, certain changes in standard equipment, options and the like, or product delays, may have occurred which would not be included in these pages. Your Ford Dealer is the best source for up-to-date information. Ford Division reserves the right to change product specifications at any time without incurring obligations. Features shown may be offered only in combination with other options or subject to additional ordering requirements or limitations. Competitive comparisons based on publicly available information at time of printing.







The best souvenir: an extraordinary experience. Like the first time you made it down that black diamond slope. You still have the tattered trail map (it's framed now).

Breathe deeply. And remember: You got here in the completely redesigned 2002 Ford Explorer. Now more capable than ever, Explorer opens up new territory for you. It has higher ground clearance, and more generous angles of approach and departure to make it more capable off-road. The step-in height is lower, so you can get in and out more easily. The optional third-row seat folds right into the floor – so loading cargo is easy. Loading passengers is easy too, since Explorer offers the most third-row headroom and legroom in its class.

**EXPLORER** | A NEW TERRITORY

EXPLORER





A



B



C



D



E

## EXTERIOR | FEATURES

**A: STEP UP |** WE LOWERED EXPLORER'S STEP-IN HEIGHT 1.7 INCHES, MADE THE DOORS LARGER AND INCREASED DRIVER'S SEAT TRAVEL. EASIER TO GET INTO, EASIER TO LOAD UP, EASIER TO GET UP AND GO ANYWHERE.

**B: EARLY LIGHT |** SECURITY APPROACH LAMPS ON THE UNDERSIDE OF BOTH SIDE MIRRORS, ACTIVATED BY THE KEY FOB'S UNLOCK BUTTON, BATHE THE GROUND AROUND FRONT DOORS IN LIGHT, SO YOU CAN AVOID PUDDLES OR POTENTIAL DANGERS NEAR THE VEHICLE. STANDARD ON XLT, EDDIE BAUER AND LIMITED.

**C: ON THE LEVEL |** WE LOWERED THE REAR LIFTOVER TO AN AVERAGE SHOPPING CART HEIGHT FOR EASIER LOADING OF A WEEK'S GROCERIES OR A WEEKEND'S GEAR.

**D: HITCH BIKE |** THE QUARTER-ROC<sup>®</sup> BIKE CARRIER ACCESSORY\* FITS INTO THE STANDARD HITCH MOUNT AND HOLDS ONE OR TWO BIKES. NO NEED TO REMOVE THE CARRIER TO ACCESS YOUR CARGO AREA, EITHER — JUST SWING THE RACK DOWN, AND OPEN THE GATE.

**E: BACKUP BACKUP |** THE OPTIONAL REVERSE SENSING SYSTEM ALERTS YOU TO CERTAIN OBJECTS BEHIND THE VEHICLE WITH A SERIES OF BEEPS TO HELP YOU GAUGE YOUR DISTANCE.

*\*See dealer to purchase.*











## EXPLORER | SMOOTH OPERATION

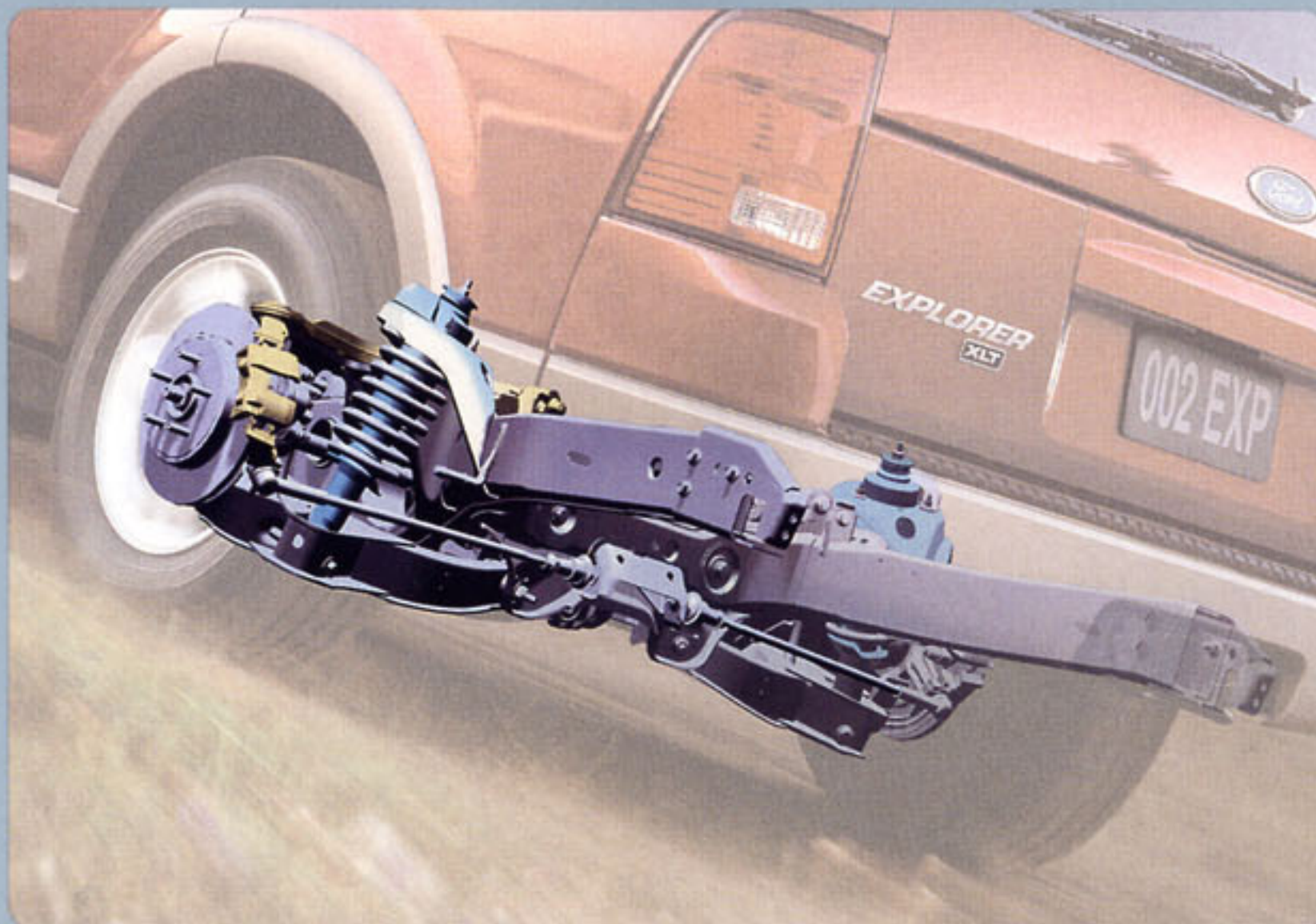
The completely redesigned 2002 Explorer unites utility and agility with advanced driving dynamics systems.

**THE NEW INDEPENDENT REAR SUSPENSION** makes the ride smoother and the performance tighter and more responsive on-road and off-road. With its innovative (and patented) "porthole frame" design, the suspension system absorbs bumps and potholes to smooth out your ride. That feels good. So does this: The system also helps optimize tire-to-pavement contact, and communicates important steering feedback to the driver, which both improve control.

**EXPLORER'S ADVANCETRAC™** system helps you maintain better control and enhances stability. The system's sensors monitor steering, throttle, and brake

inputs, as well as vehicle motion and speed. Then, in certain understeer or oversteer situations, AdvanceTrac applies appropriate braking, traction control, and throttle adjustments to correct vehicle direction to follow the driver's steering input. Available on all Explorer models equipped with 4.6L V8 engines.

**EXPLORER'S CONTROL TRAC™** pushbutton four-wheel-drive system fine-tunes 4x4 performance to diverse road and off-road conditions, making it smooth and responsive. System sensors measure drive shaft speeds and throttle position to determine the driver's intent and current traction conditions. Then it optimizes torque transfer to each axle to ensure traction. Control Trac even takes into account variables like differences in tire pressure.





## EXPLORER | INTERIOR

The buttery-rich good looks of Explorer's Eddie Bauer interior are obvious. What isn't so obvious is the fact that it – and every Explorer – is more convenient and offers even more useable room than ever before. You'll find storage compartments throughout, even beneath the cargo floor. An optional third-row seat that provides flexible seating for seven and folds into the floor when you don't need it. And a new 40/20/40 middle seat (standard with the third-row seat) that folds up for easy access and folds down to let you load your gear. Where'd we get the extra space? From that innovative independent rear suspension, which allowed us to lower the rear floor for much more interior space. If that sounds good, listen to this: The new Explorer features a stiffer bodyshell with a fully boxed frame designed for quieter operation and a more soothing ride.



KEEP CHAOS AT BAY AND MESSES AWAY WITH THE CARGO ORGANIZER ACCESSORY\*. THE COMPARTMENT DIVIDERS ARE REMOVABLE AND ADJUSTABLE, AND THE ORGANIZER EASILY INSTALLS BEHIND EITHER THE SECOND OR THIRD SEAT WITH NO TOOLS.

EXPLORER EDDIE BAUER WITH MEDIUM PARCHMENT LEATHER SEATING SURFACES AND OPTIONAL THIRD-ROW SEAT.











## INTERIOR | FEATURES

**A: HIGH NOTE |** THE OPTIONAL IN-DASH 6-CD SOUND SYSTEM DRIVES 7 SPEAKERS WITH 290 WATTS TOTAL PEAK POWER. IT'S SPECIALLY EQUALIZED FOR THE EXPLORER INTERIOR TO DELIVER THE BEST POSSIBLE SOUND RESPONSE. STANDARD ON EDDIE BAUER AND LIMITED.

**B: RUN HOT & COLD |** DUAL-ZONE CLIMATE CONTROLS, STANDARD ON EDDIE BAUER AND LIMITED, ENABLE FRONT OCCUPANTS TO MAINTAIN THEIR INDIVIDUAL COMFORT RANGES. THE STEERING WHEEL ALSO HAS A SET OF CONTROLS.

**C: FAMILY TIES |** TOP TETHER ANCHORS FOR CHILD SAFETY SEATS ARE IN SECOND-ROW AND OPTIONAL THIRD-ROW SEATING POSITIONS. THE ANCHORS ARE IN THE FLOOR PAN RATHER THAN THE SEAT.

**D: HANDS REACH |** THE HIGH SERIES FLOOR CONSOLE PROVIDES A DEEP COMPARTMENT, EQUIPPED WITH CUPHOLDERS, REAR CLIMATE CONTROLS AND A POWERPOINT. STANDARD ON XLT, EDDIE BAUER AND LIMITED.

**E: STOWAWAY |** CONCEALED STORAGE SPACE UNDER THE CARGO FLOOR GIVES YOU MORE ROOM FOR SMALL STOWABLES.

**F: PEDAL POWER |** BRAKE AND ACCELERATOR PEDALS POWER-ADJUST FOR DRIVER COMFORT. STANDARD ON EDDIE BAUER/LIMITED, OPTIONAL ON XLT. EXPLORER MODELS WITH ADVANCETRAC ALSO FEATURE BRAKE ASSIST, WHICH HELPS COMPLETE BRAKING ACTION IN EMERGENCY SITUATIONS.



A



B



C



D



E



F



## EXPLORER | PEACE OF MIND

We've built one of the most comprehensive safety and security packages available into the new Explorer. In fact, in its 40-mph frontal offset crash test, the 2002 Explorer outperformed all other major competitors<sup>†</sup> in its class, a performance that garnered it a "Best Pick" from the Insurance Institute for Highway Safety.\*

### PERSONAL SAFETY SYSTEM™

Ford's Personal Safety System adjusts occupant protection systems to help match protection to the situation. In an accident, the system quickly determines accident severity and certain occupant conditions – weight, safety belt use, seat position. Then safety belt pretensioners tighten the front belts; load-limiting retractors dynamically regulate belt slack; and the system determines whether the dual-stage front airbags should be deployed and at which of two energy levels.

### SAFETY CANOPY™ SYSTEM

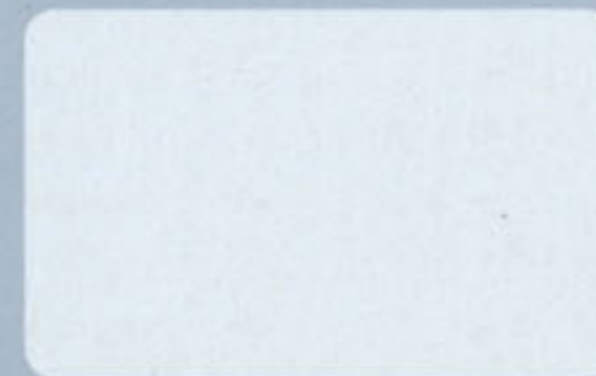
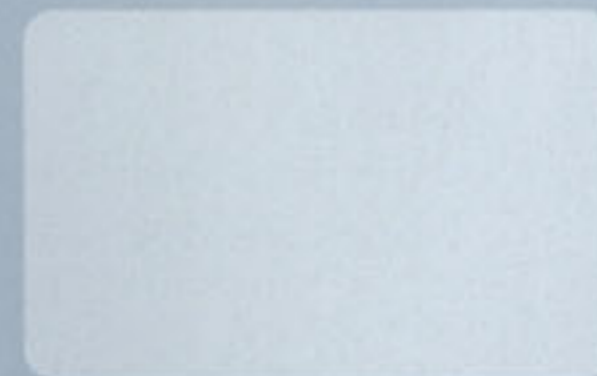
The 2002 Explorer takes safety to an entirely new level with its industry-first, innovative safety canopy system. Motor Trend called it "the ultimate in SUV airbags." In certain side-impact collisions or certain rollover events, this optional system deploys side-curtain airbags. Covering approximately two-thirds of the first- and second-row windows, these airbags remain inflated for a longer duration, providing enhanced head protection and helping to keep occupants in the vehicle.

### EVEN BRAKES

Explorer's power four-wheel disc, anti-lock braking system helps maintain driver control in hard braking situations. They're standard on every Explorer model.

<sup>†</sup>Includes Chevrolet Trailblazer/Blazer, Jeep Grand Cherokee, Dodge Durango, GMC Envoy and Toyota 4Runner. \*Models built after 10/29/01.

<sup>◇</sup>Always wear your safety belt and secure children in the rear seat.











OXFORD WHITE



WHITE PEARL TRICOAT METALLIC



SILVER BIRCH METALLIC



MINERAL GREY METALLIC



HARVEST GOLD METALLIC



A



B



C



D



E



F

**A | 16" FULL-FACE STEEL WHEELS.** STANDARD ON XLS.

**B | 16" PAINTED CAST ALUMINUM WHEELS.** STANDARD ON XLT AND INCLUDED ON XLS WITH SPORT GROUP.

**C | 16" PAINTED CAST ALUMINUM WHEELS.** STANDARD ON XLT WITH 3RD-ROW SEAT OR TRAILER TOW PACKAGE.

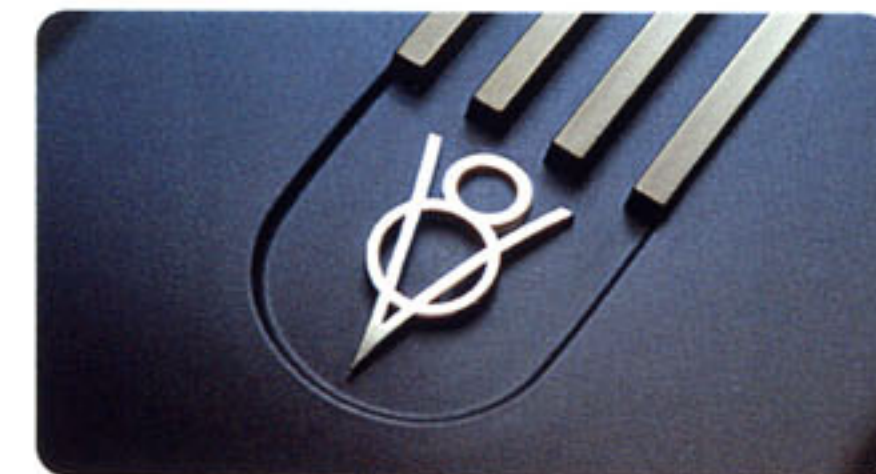
**D | 16" SATIN NICKEL CAST ALUMINUM WHEELS.** STANDARD ON EDDIE BAUER.

**E | 16" LIMITED CAST ALUMINUM WHEELS.** STANDARD ON LIMITED.

**F | 16" CHROME STEEL WHEELS.** OPTIONAL ON EDDIE BAUER AND LIMITED.



**A: CLEAN POWER |** EXPLORER'S STANDARD 4.0L SOHC V6 CAN HAUL UP TO 5940 POUNDS (PROPERLY EQUIPPED). AND THE EXPLORER IS A CERTIFIED LOW-EMISSIONS VEHICLE. ALL THIS WHILE DELIVERING 210 HP@5100 RPM.



**B: FOR THE STRONG HAUL |** THE AVAILABLE ALL-ALUMINUM, 4.6-LITER SOHC V8 ENGINE DELIVERS 239 HP@4750 RPM — ENOUGH POWER TO PULL UP TO 7300 POUNDS (PROPERLY EQUIPPED).





TOREADOR RED METALLIC



ESTATE GREEN METALLIC



ASPEN GREEN METALLIC



MEDIUM WEDGEWOOD BLUE METALLIC



TRUE BLUE METALLIC



EBONY

**XLS**

COLOR+TRIM

	GRAPHITE	MEDIUM PARCHMENT
OXFORD WHITE	*	*
SILVER BIRCH METALLIC	*	
MINERAL GREY METALLIC		*
HARVEST GOLD METALLIC		*
TOREADOR RED METALLIC	*	*
ASPEN GREEN METALLIC		*
TRUE BLUE METALLIC	*	*
EBONY	*	*

**XLT**

COLOR+TRIM

	GRAPHITE	MEDIUM PARCHMENT
OXFORD WHITE	*	*
SILVER BIRCH METALLIC	*	
MINERAL GREY METALLIC		*
HARVEST GOLD METALLIC		*
TOREADOR RED METALLIC	*	*
ESTATE GREEN METALLIC		*
ASPEN GREEN METALLIC		*
MEDIUM WEDGEWOOD BLUE METALLIC	*	*
TRUE BLUE METALLIC	*	*
EBONY	*	*

**EDDIE BAUER**

COLOR+TRIM

	MEDIUM PARCHMENT
OXFORD WHITE	*
TOREADOR RED METALLIC	*
ESTATE GREEN METALLIC	*
ASPEN GREEN METALLIC	*
MEDIUM WEDGEWOOD BLUE METALLIC	*
TRUE BLUE METALLIC	*
EBONY	*

**LIMITED**

COLOR+TRIM

	MIDNIGHT GREY	MEDIUM PARCHMENT
WHITE PEARL TRI-COAT METALLIC	*	
SILVER BIRCH METALLIC	*	
MINERAL GREY METALLIC	*	*
EBONY	*	*

FORD USES CLEARCOAT PAINT FOR BEAUTY AND PROTECTION. COLORS SHOWN ARE REPRESENTATIVE ONLY. SEE YOUR DEALER FOR ACTUAL PAINT/TRIM OPTIONS. VEHICLES SHOWN MAY CONTAIN OPTIONAL EQUIPMENT.



CLOTH LOW-BACK BUCKET SEATS IN MEDIUM PARCHMENT OR GRAPHITE. STANDARD ON XLS.



CLOTH LOW-BACK BUCKET SEATS IN MEDIUM PARCHMENT OR GRAPHITE. STANDARD ON XLT. ALSO AVAILABLE WITH LEATHER SEATING SURFACES ON XLT.



LUXURY BUCKET SEATS WITH LEATHER SEATING SURFACES IN MEDIUM PARCHMENT. STANDARD ON EDDIE BAUER.



LUXURY BUCKET SEATS WITH LEATHER SEATING SURFACES IN MEDIUM PARCHMENT OR MIDNIGHT GREY. STANDARD ON LIMITED.





## Standard Equipment on Explorer 4x2 and 4x4:

### Mechanical

- 4.0L SOHC V6 Engine
- 5-Speed Manual Transmission
- Rear Wheel Drive (4x2)
- 4WD Control Trac™ (4x4)
- 16" Full Face Steel Wheels with P235/70Rx16 OWL All-Season Tires
- Coil Spring Front Suspension
- Independent Rear Suspension
- Heavy Duty Gas Shock Absorbers
- Power 4-Wheel Disc Brakes
- Power Steering
- Stabilizer Bars (Front and Rear)
- Trailer Hitch Receiver (Class II, 3500 lb. Capacity, Includes 4-Pin Wiring Harness)

### Safety/Security

- Anti-Lock Braking System
- Battery Saver
- Child Safety Locks (Rear Doors)
- Driver's Seat Safety Belt Minder™
- Lower Anchors for Child Safety Seats
- Personal Safety System™
- Safety Belts with Adjustable Height Shoulder Belts (1st and 2nd Row)
- SecuriLock™ Passive Anti-Theft System
- Side Door Intrusion Beams

### Interior

- Front Cloth Captain's Chairs
- 2nd-Row 60/40 Split Bench Seat

- Air Conditioning
- AM/FM Stereo/Clock with Cassette
- Autolock
- Cargo Area Dome Light
- Cargo Area Interior Lock/Unlock Button
- Cargo Management System
- Floor Console with Storage Bin, Cupholders and Powerpoint
- Grab Handles
- Liftglass Remote Release Switch (Key Fob)
- Load Floor Tie Down Hooks
- Map Pockets with 20 oz. Beverage Holders
- Power Windows, Door Locks, Mirrors
- Remote Keyless Entry
- Speed Control
- Tilt Steering

### Exterior

- 22.5 Gallon Fuel Tank
- Bodyside Moldings – Painted
- Enhanced Privacy Glass – Rear Quarter, Rear Doors and Liftgate Windows
- Liftgate with Flip-Open Rear Window
- Roof Rails
- Solar Tinted Windshield/Front Door Windows
- Underbody Mount Full-Sized Steel Spare Wheel
- Windshield Wipers – Front Speed-Sensitive, Dual Intermittent
- Wiper/Washer – Rear Dual Intermittent with Defroster

## Explorer XLS

Includes all of the standard Explorer features.

### Options

- 4x4 ControlTrac™
- 5-Speed Automatic Transmission
- P245/70Rx16 OWL All-Season Tires
- Safety Canopy™ System
- Trailer Towing Prep Package

- **XLS Sport Group** – 16" Cast Aluminum Wheels, AM/FM Stereo (60 Watt) with Clock/In-Dash CD Player/4 Speakers, High Series Floor Console with Front/Rear Powerpoints and Climate Controls, Floor Mats (Front/Rear), Side Step Bars, Wheel-Lip Moldings



EXPLORER XLS



EXPLORER XLS SPORT

Following publication of the catalog, certain changes in standard equipment, options and the like, or product delays, may have occurred which would not be included in these pages. Your Ford Dealer is the best source for up-to-date information. Ford Division reserves the right to change product specifications at any time without incurring obligations. Features shown may be offered only in combination with other options or subject to additional ordering requirements or limitations. Competitive comparisons based on publicly available information at time of printing.



**Trailer Towing Prep Package:** Includes Class III Trailer Hitch Receiver with 7-Pin Wiring Harness and 3.73 Limited Slip Rear Axle. Recommended for Towing Trailers Over 3500 Lbs.

### Explorer XLT

Includes all of the standard XLS features plus:

- 5-Speed Automatic Transmission
- 16" Painted Cast Aluminum Wheels
- AM/FM Stereo/Clock with Single CD/Cassette Player
- Automatic Headlamps
- Auto-Dimming Mirror
- Black Leather-Wrapped Steering Wheel
- Bodyside Cladding and Wheel-Lip Moldings – Molded in Color

- Cloth Sport Front Bucket Seats with 6-Way Power Driver's Seat and Manual Driver/Front Passenger Lumbar Support
- Driver Door Lock Keypad
- Floor Mats (Front and Rear)
- Fog Lamps
- Front Overhead Console with Map/Dome Lamps, Ticket Clip, Sunglasses Holder and Garage Door Opener Bin

- High Series Floor Console with Powerpoints and Rear Heat Vents/AC Controls
- Illuminated Visor Vanity Mirrors
- Outside Temperature and Compass Display
- Retractable Cargo Area Cover and Cargo Shade
- Roof Rails with Crossbars
- Security Approach Lamps (Side Mirror Mounted)

### Options

- 4x4 ControlTrac™
- 4.6L SOHC V8 Engine
- 3rd-Row Seat
- 80-Watt AM/FM Stereo with 6-Disc In-Dash CD Player
- AdvanceTrac™ (with V8 Only)
- AM/FM Premium Stereo with Cassette and In-Dash CD Player
- Auxiliary Rear AC and Heater

- Sport Bucket Seats with Leather Seating Surfaces (Vinyl on Optional 3rd-Row Seat)
- Power Adjustable Pedals
- Power Moonroof
- Running Boards – Black
- Reverse Sensing System
- Safety Canopy™ System
- Trailer Towing Prep Package (included in AdvanceTrac)

- **XLT Sport Group** – 17" 5-Spoke Machined Aluminum Wheels, P245/65R17 All-Terrain OWL Tires, Platinum Gloss Bodyside Cladding and Wheel-Lip Moldings, Platinum Gloss Side Step Bars, Platinum Gloss Two-Tone Front and Rear Fascias

### Explorer Eddie Bauer

Includes all of the standard XLT features plus:

- 16" Satin Nickel Cast Aluminum Wheels
- P245/70R16 OWL All-Season Tires
- 290-Watt AM/FM Stereo/Clock with 6-Disc In-Dash CD Player
- Bodyside Cladding and Wheel-Lip Moldings – Painted Arizona Beige
- Color-Keyed Leather-Wrapped Steering Wheel with Audio and Climate Controls
- Dual Electronic Automatic Temperature Control

### Options

- 4x4 ControlTrac™
- 4.6L SOHC V8 Engine
- 3rd-Row Seat (Vinyl)
- 16" Chrome Steel Wheels
- AdvanceTrac™ (with V8 Only)

- Heated Exterior Mirrors
- Heated Front Bucket Seats with Leather Seating Surfaces and 6-Way Power Passenger Seat/Lumbar Support
- Homelink®
- Memory Driver's Seat
- Message Center
- Power Adjustable Pedals with Memory
- Running Boards – Color-Keyed
- Tilt Steering Wheel

- Power Moonroof
- Rear Auxiliary AC and Heater
- Reverse Sensing System
- Safety Canopy™ System
- Trailer Towing Prep Package (included in AdvanceTrac)

### Explorer Limited

Includes all of the standard Eddie Bauer features plus:

- 16" Limited Cast Aluminum Wheels
- Bodyside Cladding and Wheel-Lip Moldings – Monochromatic (Except Tri-Coat White with Silver Birch Accents)
- Luxury Front Bucket Seats with Leather Seating Surfaces

### Options

- 4x4 ControlTrac™
- 4.6L SOHC V8 Engine
- 3rd-Row Seat (Vinyl)
- 16" Chrome Steel Wheels
- P245/70R16 BSW All-Season Tires
- AdvanceTrac™ (with V8 Only)
- Power Moonroof
- Rear Auxiliary AC and Heater
- Reverse Sensing System
- Safety Canopy™ System
- Trailer Towing Prep Package (included in AdvanceTrac)



**EXPLORER XLT**



**EXPLORER XLT SPORT**



**EXPLORER EDDIE BAUER**



**EXPLORER LIMITED**







The view is spectacular – but then Expedition is designed to impress. This full-size SUV is fully capable – with over 4 tons of towing power (properly equipped), room for up to nine passengers, and up to 110 cubic feet of cargo (with second- and third-row seats removed). Expedition's optional air suspension (4-corner load leveling) distributes the load equally between all wheels to enhance ride and handling, and smooth out the bumps in the road. Another impressive fact: Expedition is the only full-size SUV with a double five-star government crash rating.

**EXPEDITION** | ULTIMATE ADVENTURE.  
CONFIDENT CAPABILITY.

EXPEDITION





A



D



C



E



B

## EXTERIOR | FEATURES

**A: ROCK BLOCK** | SINCE TERRAIN ISN'T AS SMOOTHLY ENGINEERED AS PAVEMENT, THE OPTIONAL SKID PLATE PACKAGE (4x4 ONLY) PROTECTS THE FUEL TANK AND TRANSFER CASE FROM ROUGH GROUND.

**B: THE BIG TOW** | GOT A LOAD TO PULL? THE AVAILABLE CLASS IV TRAILER TOWING GROUP INCLUDES A HITCH RECEIVER, WIRING HARNESS, AND OTHER EQUIPMENT TO GIVE YOU 8200 LBS. TOWING CAPACITY (4x2).

**C: HINDSIGHT HELP** | ANOTHER TOWING AID: A WIDE SELECTION OF TOW MIRROR ACCESSORIES\*, INCLUDING PERMANENT AND REMOVABLE, POWER/HEATED AND MANUAL. EACH GIVES YOU THE ADDITIONAL REAR VISION YOU NEED TO SEE AROUND TOW LOADS.

**D: START BUTTON** | GET A HEAD START WITH THE OPTIONAL REMOTE START ACCESSORY.\* OPERATES FROM A KEY FOB, AND INCLUDES LIGHT SWITCH AND PANIC BUTTON.

**E: DEBUGGER** | PROTECT EXPEDITION'S FRONT EDGE WITH THE OPTIONAL WRAP-AROUND BUG SHIELD ACCESSORY.\* DURABLE SMOKE-COLORED LEXAN® ADDS AN ACCENT TO ANY EXTERIOR COLOR.

\*See dealer to purchase.





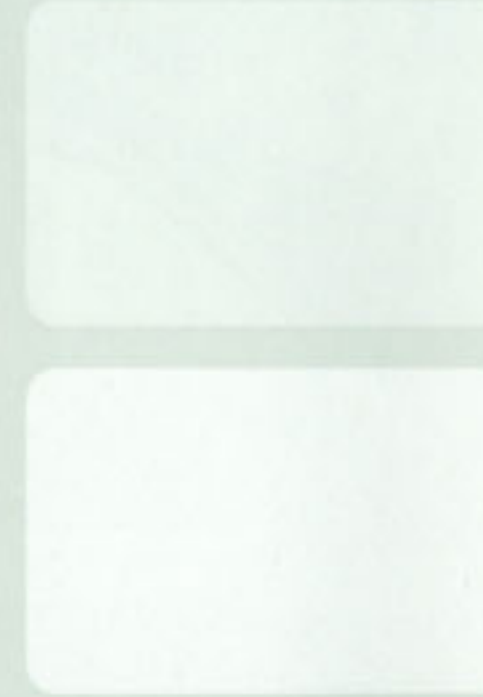


This is no short story. Expedition's interior is far too versatile and flexible for that. Available seating runs up to nine. First-row seating includes a 40/60 split-bench (standard on XLT) or individual captain's chairs (standard on Eddie Bauer, optional on XLT). The second-row 60/40 bench seat, which includes a center armrest and cupholders, conveniently folds to make way for longer cargo. The third-row bench seat, comfortable for three passengers, is also removable, to make more cargo space.

## EXPEDITION | INTERIOR

Second-row captain's chairs with leather seating surfaces are available, tailored and ergonomically designed for comfort and support. With the Eddie Bauer interior, seating options – and luxuries – abound. Leather seating surfaces, a MACH® audio system and rear heater/air conditioner are all standard.

Expedition XLT interior comforts and conveniences are pretty impressive too. A sampling: standard AC, reclining second-row seats, and cupholders for every outboard seat.



EXPEDITION XLT WITH PREMIUM SPORT APPEARANCE GROUP IN DARK GRAPHITE.

EXPEDITION EDDIE BAUER WITH MEDIUM PARCHMENT LEATHER SEATING SURFACES AND OPTIONAL SECOND-ROW CAPTAIN'S CHAIRS (ALSO SHOWN TOP RIGHT).













## INTERIOR | FEATURES

**A: AIR TIME |** THE OPTIONAL POWER MOON-ROOF TILTS OPEN, OR RETRACTS FULLY, AND INCLUDES A FULL SHADE.

**B: CONVENIENCE UNDERFOOT |** MOVE THE BRAKE AND ACCELERATOR PEDALS WHERE THEY'RE COMFORTABLE FOR YOU WITH THE STANDARD POWER-ADJUSTABLE PEDAL SYSTEM.

**C: MOVING PICTURES |** OPTIONAL REAR-SEAT ENTERTAINMENT SYSTEM INCLUDES A VIDEO CASSETTE PLAYER, FOLD-DOWN LCD SCREEN, AND TWO INFRARED WIRELESS HEADPHONE SETS.

**D: AUTO AIR |** SET THE TEMPERATURE YOU'RE COMFORTABLE WITH AND FORGET ABOUT IT — THE ELECTRONIC AUTOMATIC TEMPERATURE CONTROL WILL MAINTAIN IT FOR YOU. STANDARD ON EDDIE BAUER.

**E: SIDE AIRBAG |** OPTIONAL FRONT-SEAT-MOUNTED SIDE AIRBAGS<sup>◇</sup> PROVIDE ENHANCED PROTECTION IN SIDE IMPACTS.

**F: AUDIO SUPPORT |** THE MACH AUDIO SYSTEM, STANDARD ON EDDIE BAUER, SPORTS AM/FM AND CASSETTE, 290 WATTS AND 7 SPEAKERS, WITH AUTOMATIC SPEED-SENSITIVE VOLUME. A RADIO-CONTROLLED 6-CD CHANGER IS STANDARD ON EDDIE BAUER, OPTIONAL ON XLT.

<sup>◇</sup> Always wear your safety belt and secure children in the rear seat.



A



B



C



D



E



F





OXFORD WHITE



SILVER METALLIC



ARIZONA BEIGE METALLIC



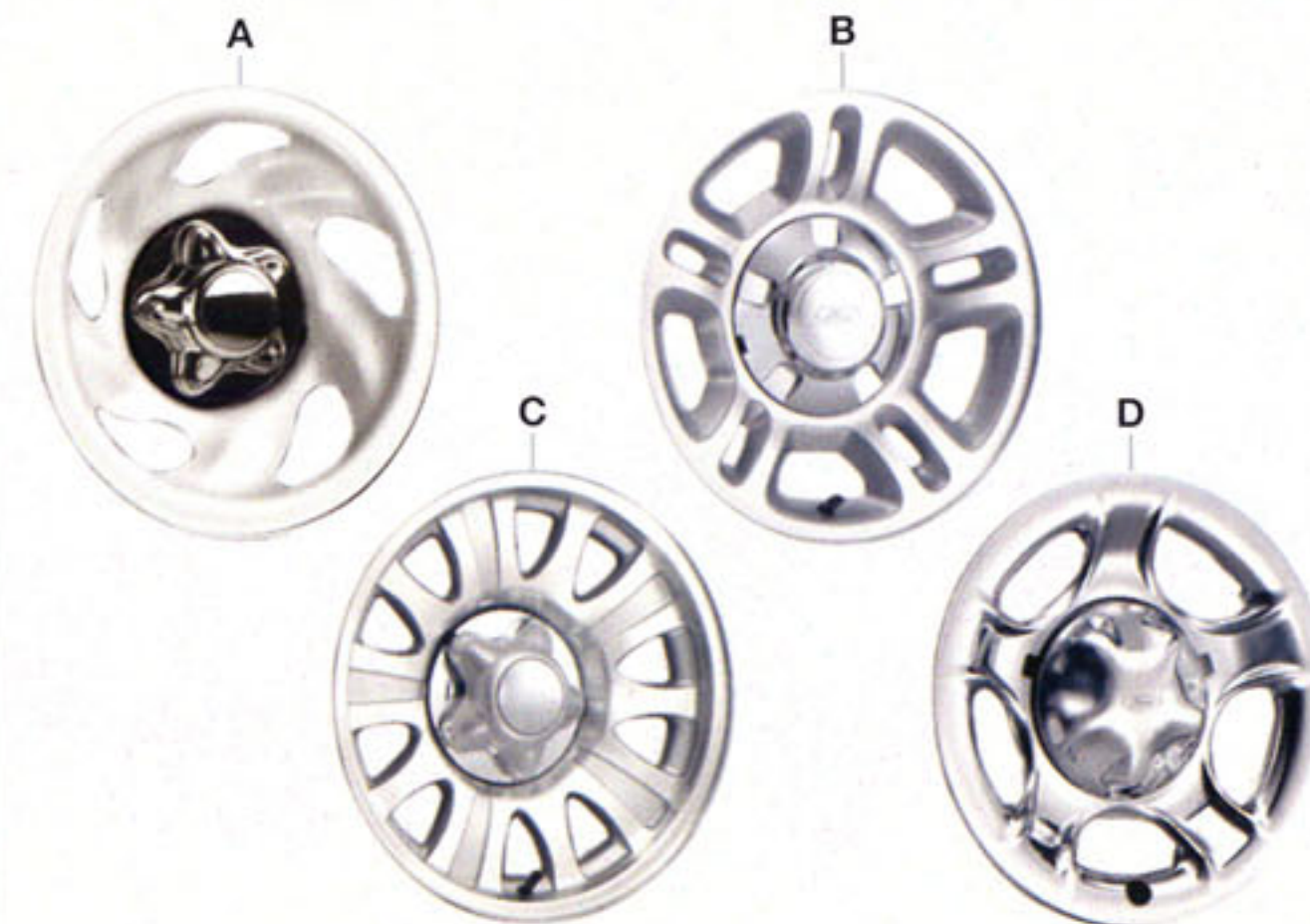
### XLT NO BOUNDARIES GROUP

EXCLUSIVELY AVAILABLE ON EXPEDITION XLT WITH ITS BLACK-ON-BLACK THEME, THE NO BOUNDARIES GROUP COPS A SERIOUS ATTITUDE. THE INTENSE BLACK CLEARCOAT FINISH IS COMPLEMENTED BY BRIGHT INSERT CLADDING, ILLUMINATED RUNNING BOARDS, A CHROME GRILLE SURROUND, FOG LAMPS, UNIQUE 17-INCH 5-SPOKE ALUMINUM WHEELS AND DARK GRAPHITE SPORT WOVEN CLOTH SEATS OR OPTIONAL MEDIUM GRAPHITE LEATHER SEATING SURFACES.



### EDDIE BAUER PREMIER GROUP

THE EDDIE BAUER PREMIER GROUP IS THE PEAK OF EXPEDITION LUXURY. IT SPORTS A MONOCHROMATIC ARIZONA BEIGE OR BLACK EXTERIOR, FOG LAMPS AND UNIQUE 17-INCH 10-SPOKE COLOR-ACCENTED ALUMINUM WHEELS. INSIDE, FIRST- AND SECOND-ROW CAPTAIN'S CHAIRS ARE FINISHED WITH MEDIUM PARCHMENT LEATHER SEATING SURFACES AND A STANDARD POWER MOONROOF.



A | 16" STYLED STEEL WHEEL. STANDARD ON XLT.

B | 16" CAST ALUMINUM WHEEL INCLUDED IN OPTIONAL XLT COMFORT AND CONVENIENCE GROUP.

C | 17" TEN-SPOKE ALUMINUM WHEEL INCLUDED IN OPTIONAL XLT PREMIUM SPORT APPEARANCE GROUP.

D | 17" CHROMED STEEL WHEEL. STANDARD ON EDDIE BAUER.





LASER RED TINTED



MEDIUM WEDGEWOOD BLUE METALLIC



BLACK

XLT COLOR+TRIM	MEDIUM PARCHMENT	MEDIUM GRAPHITE	DARK GRAPHITE
OXFORD WHITE	*	*	*
SILVER METALLIC		*	*
ARIZONA BEIGE METALLIC	*		*
MED. WEDGEWOOD BLUE METALLIC	*	*	
BLACK	*	*	*

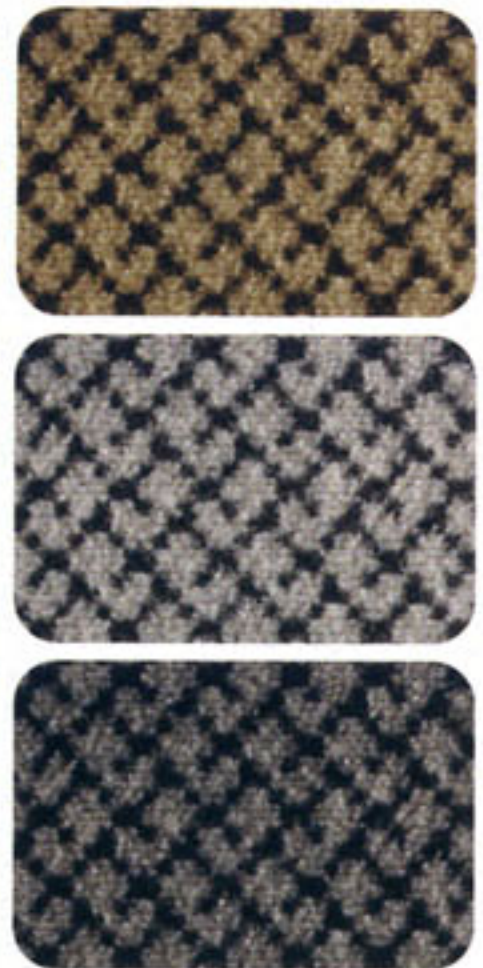
XLT PREMIUM SPORT APPEARANCE GROUP COLOR+TRIM	MEDIUM GRAPHITE	DARK GRAPHITE
OXFORD WHITE	*	*
SILVER METALLIC	*	*
LASER RED TINTED	*	*
BLACK	*	*

EDDIE BAUER COLOR+TRIM	MEDIUM PARCHMENT	MEDIUM GRAPHITE
OXFORD WHITE	*	*
LASER RED TINTED	*	*
MED. WEDGEWOOD BLUE METALLIC	*	*
BLACK	*	*

XLT NO BOUNDARIES GROUP	MEDIUM GRAPHITE	DARK GRAPHITE
BLACK	*	*

EDDIE BAUER PREMIER GROUP	MEDIUM PARCHMENT	MEDIUM GRAPHITE
ARIZONA BEIGE	*	
BLACK	*	

FORD USES CLEARCOAT PAINT FOR BEAUTY AND PROTECTION. COLORS SHOWN ARE REPRESENTATIVE ONLY. SEE YOUR DEALER FOR ACTUAL PAINT/TRIM OPTIONS. VEHICLES SHOWN MAY CONTAIN OPTIONAL EQUIPMENT.



FRONT CLOTH CAPTAIN'S CHAIRS IN MED. PARCHMENT, MED. GRAPHITE OR DARK GRAPHITE  
 -INCLUDED ON XLT WITH COMFORT AND CONVENIENCE GROUP  
 -INCLUDED ON XLT WITH SPORT APPEARANCE GROUP OR NO BOUNDARIES GROUP (DARK GRAPHITE SPORT-WOVEN CLOTH)



FRONT CAPTAIN'S CHAIRS WITH LEATHER SEATING SURFACES IN MED. PARCHMENT OR MED. GRAPHITE  
 -STANDARD ON EDDIE BAUER  
 -OPTIONAL ON XLT WITH PREMIUM SPORT GROUP OR NO BOUNDARIES GROUP (MED. GRAPHITE)  
 -OPTIONAL ON XLT WITH COMFORT AND CONVENIENCE GROUP



FRONT CAPTAIN'S CHAIRS WITH LEATHER SEATING SURFACES AND HEAD RESTRAINTS IN MEDIUM PARCHMENT  
 -STANDARD ON EDDIE BAUER WITH THE PREMIER GROUP



**A: POWER CORE** | THE TRITON™ 4.6L SOHC V8 IS STANDARD ON XLT AND EDDIE BAUER 4x2. HORSEPOWER: 232@4750 RPM, TORQUE OUTPUT: 291 FT-LB@3450 RPM.



**B: TOP TORQUE** | THE 5.4L TRITON V8, STANDARD ON EDDIE BAUER 4x4, DELIVERS 260 HP@4500 RPM AND 350 FT-LB OF TORQUE@2500 RPM. THE TRITON LINE FEATURES THE FAIL-SAFE COOLING SYSTEM.



## Standard Equipment on Expedition 4x2 and 4x4

### Mechanical

- 4.6L SOHC V8 Engine
- 4-Speed Automatic Transmission with Overdrive
- 16" Styled Steel Wheels
- P255/70Rx16 BSW All-Season Tires
- Rear Wheel Drive (4x2)
- Shift-on-the-Fly 4WD System (4x4)
- 4-Wheel Power Disc Brakes
- Power Steering
- Stabilizer Bars (Front/Rear)

### Safety/Security

- 4-Wheel Anti-Lock Braking System
- Airbags – Driver and Front Passenger
- Securilock™ – Passive Anti-Theft System
- Side Intrusion Door Beams
- Tether Anchors for Child Safety Seats

### Interior

- 40/60 Split Bench Front Seat with 6-Way Power Driver's Seat and Manual Lumbar
- 2nd-Row 60/40 Split Bench Cloth Seat with Center Armrest, Cupholders, Reclining and Fold Flat Features
- 3rd-Row Bench Seat – Removable Fold/Tip/Stow Seat with Seat Roller System
- Air Conditioning – Manual
- Assist Handles
- Cargo Area Tie Downs

- Cupholders
- Floor Mats – 1st and 2nd Rows
- Keyless Entry Keypad (Driver Door)
- Power Adjustable Pedals
- Powerpoints
- Power Windows, Door Locks and Mirrors
- Premium AM/FM Stereo with Cassette and Clock
- Rear Floor Heat Ducts
- Remote Keyless Entry with Illuminated Entry
- Speed Control
- Sun Visors with Passenger-Side Lighted Vanity Mirror
- Tachometer

### Exterior

- 26 Gallon Fuel Tank (4x2); 30 Gallon (4x4)
- Fixed Rear Quarter Windows
- Front Tow Hooks (4x4)
- Liftgate with Flip-Up Glass
- Luggage Rack
- Moldings – Color Keyed with Bright Insert
- Privacy Glass (Rear)
- Solar Tinted Glass
- Wipers/Washer – Front Speed Sensitive/Intermittent
- Wipers/Washer – Rear Intermittent with Defroster

## Expedition XLT

Includes all of the standard Expedition features.

### Options

- Shift-on-the-Fly 4WD System
- 5.4L Triton™ V8 Engine
- 6-CD Changer
- Air Suspension (4x4)
- Class IV Trailer Towing Group (Includes Rear Load Leveling and 30 Gallon Fuel Tank on 4x2)
- Front Captain's Chairs with Floor Console
- Leather Seating Surfaces (Vinyl 3rd Row)
- Limited Slip Rear Axle
- Power Moonroof
- Rear-Seat Entertainment System
- Reverse Sensing System
- Side-Impact Airbags
- Skid Plate Package (4x4) – Includes Front Differential/Suspension and Skid Plate for Fuel Tank and Transfer Case
- Comfort and Convenience Group
- Premium Sport Appearance Group
- No Boundaries Group

### Optional XLT Comfort and Convenience Group

- 16" Cast Aluminum Wheels
- P255/70Rx16 OWL All-Terrain Tires
- Auxiliary Heater/Air Conditioner (Rear)
- Front Captain's Chairs with Center Floor Console, 6-Way Power Driver's Seat and Manual Driver/Passenger Lumbar
- Dual Illuminated Visor Mirrors
- Electrochromic Mirror
- Illuminated Running Boards (Black)
- Power Heated Mirrors

Following publication of the catalog, certain changes in standard equipment, options and the like, or product delays, may have occurred which would not be included in these pages. Your Ford Dealer is the best source for up-to-date information. Ford Division reserves the right to change product specifications at any time without incurring obligations. Features shown may be offered only in combination with other options or subject to additional ordering requirements or limitations. Competitive comparisons based on publicly available information at time of printing.





**Optional XLT Premium Sport Appearance Group**

- 17" 10-Spoke Cast Aluminum Wheels
- P275/60x17 OWL All-Season Tires (4x2)
- P265/70x17 OWL All-Terrain Tires (4x4)
- Color-Keyed Front Bumper, Grille and Door Moldings
- Dark Titanium Accent Wheel Lip Moldings and Rear Bumper
- Fog Lamps
- Skid Plate Package (4x4) – Includes Front Differential/Suspension and Skid Plate for Fuel Tank and Transfer Case
- Sport Woven Cloth Captain's Chairs (Optional Medium Graphite Leather Seating Surfaces)
- Step Bars (Replace Illuminated Running Boards)

**Optional XLT No Boundaries Group**

- 17" 5-Spoke Aluminum Wheels
- P275/60x17 OWL All-Season Tires (4x2)
- P265/70x17 OWL All-Terrain Tires (4x4)
- Bodyside Molding with Bright Inserts
- Chrome Exterior Mirrors and Grille Surround
- Fog Lamps
- Illuminated Running Boards
- Monochromatic Black Exterior Paint
- Sport Woven Cloth Captain's Chairs (Optional Medium Graphite Leather Seating Surfaces)

**Eddie Bauer**

Includes all of the standard XLT features plus:

- 5.4L SOHC V8 Engine (4x4)
- 17" Chrome Steel Wheels
- P275/60R17 OWL All-Season Tires (4x2)
- P265/70R17 OWL All-Terrain Tires (4x4)
- Class IV Trailer Towing Group (4x4)
- Electronic Automatic Temperature Control
- Fog Lamps
- Front Captain's Chairs with Floor Console, 6-Way Power Driver's Seat and Manual Driver Lumbar
- Illuminated Running Boards – Arizona Beige
- Leather Seating Surfaces
- MACH® Audio System with Cassette and 6-Disc CD Changer
- Power Memory Mirrors with Turn Indicators
- Power Quarter Windows
- Wheel Lip and Rocker Moldings – Arizona Beige
- Comfort and Convenience Group

**Options**

- Shift-on-the-Fly 4WD System
- 2nd-Row Captain's Chairs
- Air Suspension (4x4)
- Class IV Trailer Towing Group (Includes Rear Load Leveling and 30-Gallon Fuel Tank on 4x2)
- Heated Front Seats
- Limited Slip Rear Axle
- Power Moonroof
- Rear-Seat Entertainment System
- Reverse Sensing System
- Side-Impact Airbags
- Skid Plate Package (4x4) – Includes Front Differential/Suspension and Skid Plate for Fuel Tank and Transfer Case
- Eddie Bauer Premier Group

**Optional Eddie Bauer Premier Group**

- Monochromatic Arizona Beige or Black Exterior
- 17" 10-Spoke Color-Accented Aluminum Wheels
- P275/60x17 All-Season Tires (4x2)
- P265/70x17 All-Terrain Tires (4x4)
- Color-Keyed Bodyside Moldings
- Fog Lamps
- Front and 2nd-Row Captain's Chairs
- Power Moonroof

**XLT PREMIUM SPORT APPEARANCE GROUP**







Ford Excursion is what the other SUVs want to be when they grow up. It's about having it all in a sport utility. And not coincidentally, being able to get it all into a sport utility. And being able to tow it all behind a sport utility. Its torque and interior space top its class. Four seating configurations seat up to nine passengers. Cargo space ranges from a generous 48 cubic feet to an astounding 146.4, depending on seating use. The available 6.8L Triton™ V10 engine generates 425 ft-lb of trailer-pulling torque low in the power curve, which helps Excursion net out to 5 ½ tons of towing power (properly equipped). And as a certified Low Emissions Vehicle, it's not trading off environmental soundness either. There's an adjective for all this: Ultimate. And a new definition: Ford Excursion.

**EXCURSION** | NOTHING COMES CLOSE.  
(FEW THINGS DARE.)

EXCURSION





A



B



C



D

### EXTERIOR | FEATURES

**A: REAR VIEW | YOUR FULL-ACCESS PASS:** EXCURSION'S UNIQUE TRI-PANEL™ DOOR SYSTEM GIVES YOU MAXIMUM LOADING EASE. THE LOWER SPLIT GATE DOORS SWING OPEN, AND THE UPPER HATCH DOOR SWINGS UP TO OPEN THE WHOLE CARGO BAY WIDE. AND THERE'S NO CENTER PILLAR TO BLOCK THE REAR VIEW.

**B: CUT THE FOG | WHEN CLOUDS COME DOWN,** FOG LAMPS HELP YOU FIND YOUR WAY THROUGH. STANDARD ON LIMITED AND LIMITED ULTIMATE.

**C: TONS OF TOW | A CLASS IV LOAD-EQUALIZING TRAILER-HITCH RECEIVER IS STANDARD EQUIPMENT ON ALL EXCURSIONS.** PROPERLY EQUIPPED, EXCURSION CAN TOW UP TO 11,000 POUNDS.

**D: BACK BEEP | THE REVERSE SENSING SYSTEM ALERTS YOU TO CERTAIN OBJECTS BEHIND THE VEHICLE WITH A SERIES OF BEEPS TO HELP YOU GAUGE YOUR DISTANCE.** STANDARD ON LIMITED AND LIMITED ULTIMATE, OPTIONAL ON XLT PREMIUM.

EXCURSION XLT PREMIUM IN BLACK CLEARCOAT, SHOWN WITH OPTIONAL EQUIPMENT.







EXCURSION  
XLT

001 DVG









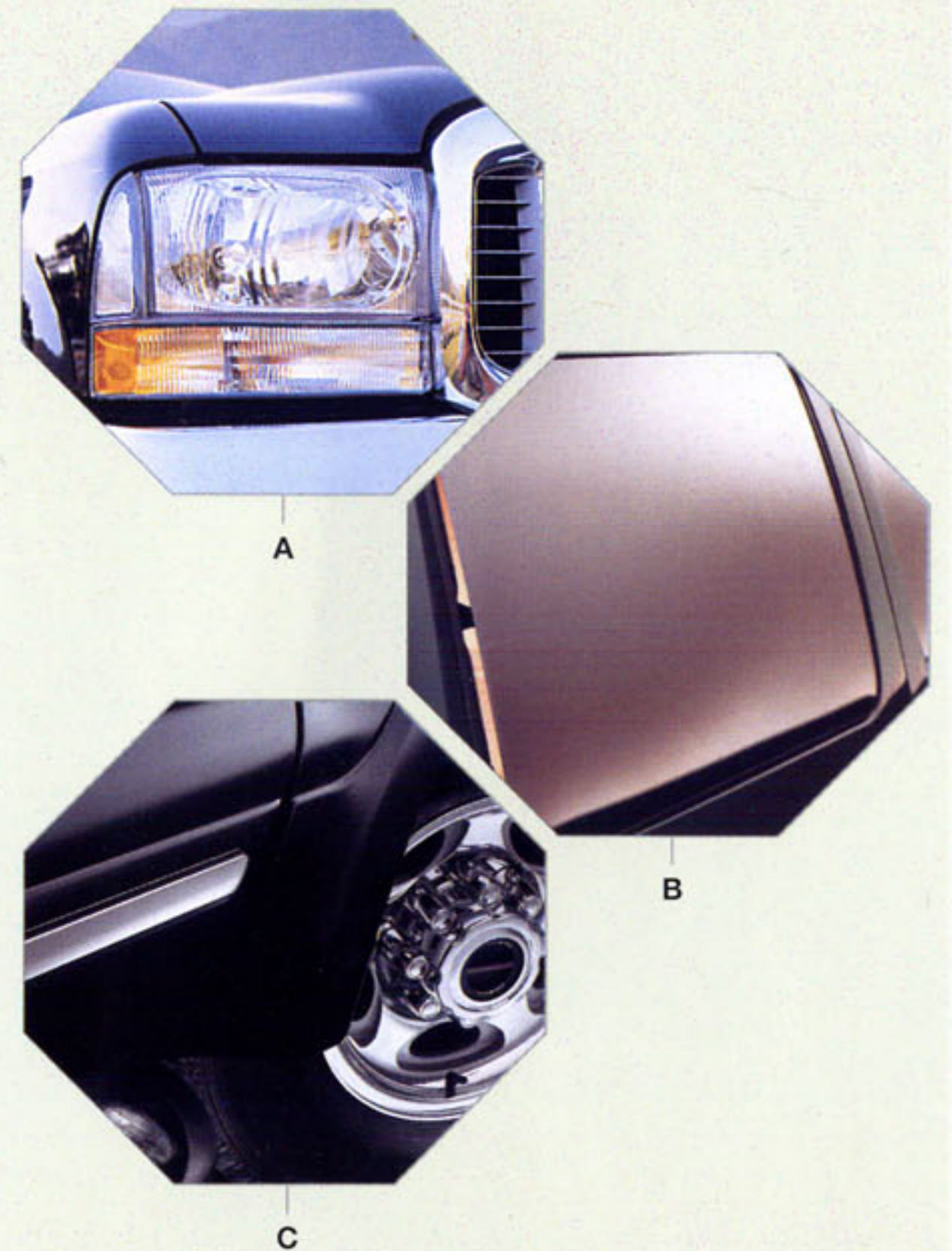
EXCURSION LIMITED ULTIMATE IN BLACK CLEARCOAT.

## EXTERIOR | FEATURES

**A: DAY LIGHT** | JEWEL-LIKE CRYSTALLINE HEADLAMPS ARE PART OF EXCURSION'S CLEAN LOOK. THE AUTO HEADLAMP FEATURE, STANDARD ON XLT PREMIUM, LIMITED AND LIMITED ULTIMATE, TURNS THEM ON OR OFF AUTOMATICALLY DEPENDING ON AMBIENT LIGHT CONDITIONS.

**B: BREATHE EASY** | GET THAT TURN-OF-THE-SEASONS RELAXING-SUNDAY-DRIVE OPEN-WINDOW FLOW-THROUGH VENTILATION FEELING GOING WITH THE POWER-OPERATED REAR VENT WINDOWS. BREATHE IN, BREATHE OUT. STANDARD ON XLT PREMIUM, LIMITED AND LIMITED ULTIMATE.

**C: HIGHLIGHTS** | HERE'S SOMETHING YOU DON'T SEE MUCH OF ANYMORE — BRILLIANT CHROME. THESE ACCENTS ARE A GREAT ELEMENT, ANNOUNCING YOUR ARRIVAL IN STYLE. STANDARD ON LIMITED AND LIMITED ULTIMATE. THE OPTIONAL LIMITED PREMIER GROUP MONOCHROMATIC EXTERIOR SHOWN.





## EXCURSION | INTERIOR

Ultimate comfort, flexibility and luxury. Excursion offers more room than any vehicle in its class, and with folding and removable seats, you get a multitude of ways to configure it. In the front, dual power captain's chairs put you in command (standard in XLT Premium and Limited models). The second row includes a standard 60/40 bench with dual recliners or optional captain's chairs in the new Limited Ultimate. A third-row bench provides room for three, and it folds flat or removes to create more storage space. Touches of luxury surround you – redundant A/C and audio steering wheel controls, power heated seats with two memory settings for the driver's seat, power adjustable pedals with memory settings for two drivers, electronic automatic temperature control, reversible cargo mat and a Homelink® universal garage door opener are all standard equipment on the Limited Ultimate.



EXCURSION LIMITED ULTIMATE WITH OPTIONAL LIMITED PREMIER GROUP, INCLUDING TWO-TONE LEATHER SEATING SURFACES AND 2ND-ROW CAPTAIN'S CHAIRS.



EXCURSION LIMITED ULTIMATE WITH MEDIUM PARCHMENT LEATHER SEATING SURFACES.

EXCURSION LIMITED ULTIMATE WITH MEDIUM PARCHMENT LEATHER SEATING SURFACES AND OPTIONAL 2ND-ROW CAPTAIN'S CHAIRS.











## INTERIOR | FEATURES

**A: POWER PEDALS |** STANDARD ON EXCURSION LIMITED AND LIMITED ULTIMATE (OPTIONAL ON XLT AND XLT PREMIUM) ARE POWER-ADJUSTABLE PEDALS, WITH MEMORY ON LIMITED ULTIMATE.

**B: DRIVE-IN MOVIES |** THE OPTIONAL REAR-SEAT ENTERTAINMENT SYSTEM INCLUDES A DVD PLAYER INTEGRATED WITH A FOLD-DOWN 7" LCD SCREEN AND TWO HEADSETS. THE SYSTEM ALSO PLAYS AUDIO CDs AND AM/FM, INDEPENDENT FROM THE FRONT-SEAT SYSTEM.

**C: HIGHER POWER |** EXCURSION XLT'S OVERHEAD CONSOLE INCLUDES OUTDOOR TEMP INDICATOR, COMPASS, AUXILIARY AC CONTROLS, BINS FOR YOUR GARAGE DOOR OPENER AND SUNGLASSES, AND MAP/READING LIGHTS. ON EXCURSION XLT PREMIUM, LIMITED AND LIMITED ULTIMATE, A TRIP COMPUTER AND REAR WINDOW POWER CONTROLS ARE STANDARD TOO.

**D: IN CONCERT |** THE AVAILABLE PREMIUM AUDIO SYSTEM INCLUDES AN AM/FM STEREO AND 6-DISC IN-DASH CD PLAYER WITH 6 PREMIUM SPEAKERS.

**E: DUAL POWER SEATS |** DUAL POWER FRONT SEATS PROVIDE 6 DIRECTIONS OF MOTION (STANDARD ON XLT PREMIUM, LIMITED AND LIMITED ULTIMATE). ON LIMITED ULTIMATE, THEY ALSO REMEMBER THE DRIVER'S SEAT POSITION. HEATED FRONT SEATS ARE OPTIONAL ON LIMITED; STANDARD ON LIMITED ULTIMATE.







OXFORD WHITE



SILVER BIRCH METALLIC



TOREADOR RED



ESTATE GREEN METALLIC

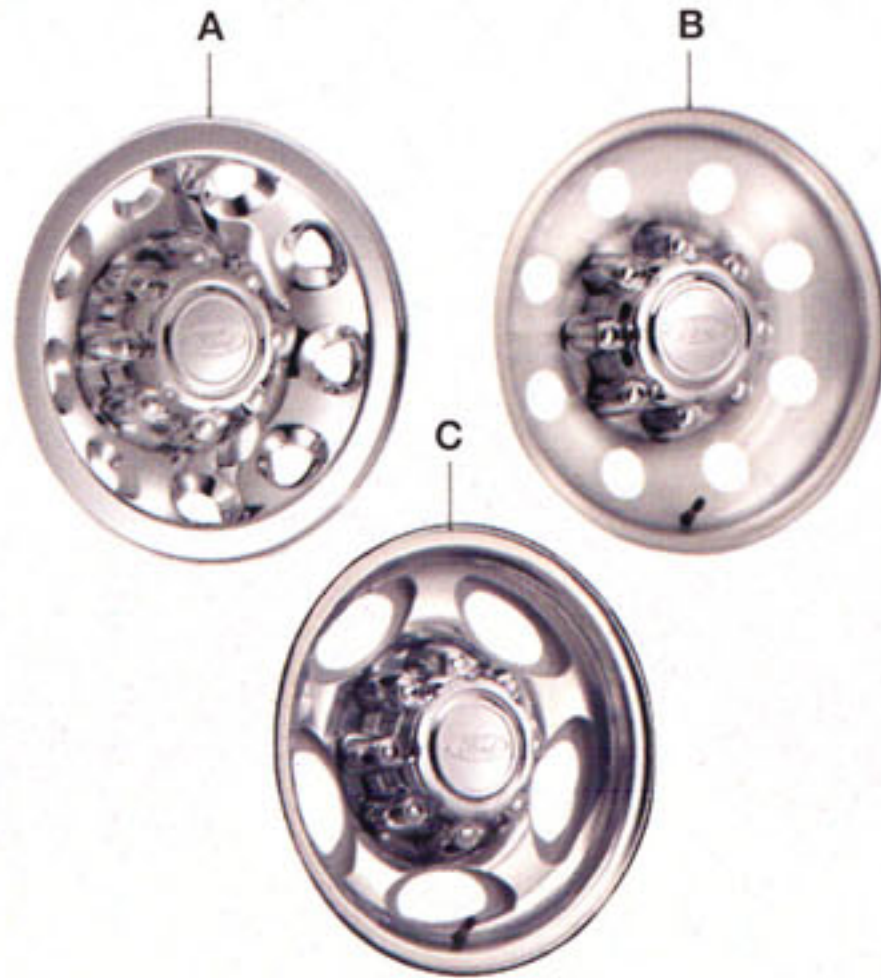


ASPEN GREEN METALLIC



**LIMITED PREMIER GROUP**

MAKE THE ULTIMATE STATEMENT OF EXCURSION STYLE. NOW AVAILABLE IN THREE EXTERIOR COLORS — ASPEN GREEN, MINERAL GREY AND BLACK. THE LIMITED PREMIER GROUP, OFFERED ON LIMITED AND LIMITED ULTIMATE MODELS, INCLUDES UNIQUE TWO-TONE LEATHER SEATING SURFACES, MONOCHROMATIC PAINT WITH A BODY-COLORED GRILLE, CHROME BODYSIDE INLAYS AND COLOR-ACCENTED ILLUMINATED RUNNING BOARDS.



**A** | 16" CHROMED STEEL WHEEL. STANDARD ON XLT.

**B** | 16" POLISHED ALUMINUM WHEEL. STANDARD ON XLT PREMIUM.

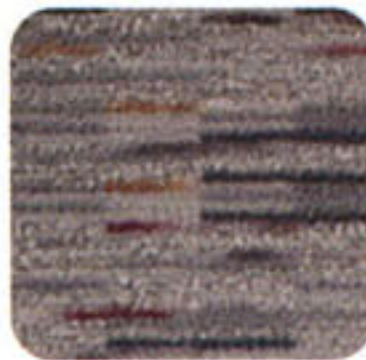
**C** | 16" LIMITED ALUMINUM WHEEL. STANDARD ON LIMITED AND LIMITED ULTIMATE.

**WHEELS+TIRES |**

**XLT AND XLT PREMIUM  
COLOR+TRIM**

	MEDIUM PARCHMENT	MEDIUM FLINT
OXFORD WHITE	*	*
SILVER BIRCH METALLIC		*
TOREADOR RED METALLIC	*	*
ASPEN GREEN METALLIC	*	*
MEDIUM WEDGEWOOD BLUE METALLIC		*
TRUE BLUE METALLIC	*	*
BLACK	*	*

FORD USES CLEARCOAT PAINT FOR BEAUTY AND PROTECTION. COLORS SHOWN ARE REPRESENTATIVE ONLY. SEE YOUR DEALER FOR ACTUAL PAINT/TRIM OPTIONS. VEHICLES SHOWN MAY CONTAIN OPTIONAL EQUIPMENT.



CLOTH SEATS IN MEDIUM PARCHMENT OR MEDIUM FLINT. STANDARD ON XLT AND XLT PREMIUM.



FRONT CAPTAIN'S CHAIRS WITH LEATHER SEATING SURFACES IN MEDIUM PARCHMENT OR MEDIUM FLINT. OPTIONAL ON XLT PREMIUM.

**SEATS+FABRICS |**





MEDIUM WEDGEWOOD BLUE METALLIC



TRUE BLUE METALLIC



MINERAL GREY METALLIC



BLACK

LIMITED AND LIMITED ULTIMATE  
COLOR+TRIM

MEDIUM  
PARCHMENT

OXFORD WHITE	*
TREADOR RED METALLIC	*
ESTATE GREEN METALLIC	*
ASPEN GREEN METALLIC	*
TRUE BLUE METALLIC	*
MINERAL GREY METALLIC	*
BLACK	*



FRONT CAPTAIN'S CHAIRS WITH LEATHER SEATING SURFACES IN MEDIUM PARCHMENT. STANDARD ON LIMITED AND LIMITED ULTIMATE.



**CONFIDENT POWER** | THE STANDARD 5.4L SEFI TRITON™ V8 YIELDS 350 FT-LB TORQUE@2500 RPM AND 255 HP@4500 RPM.



**TWO PERFECT 11,000S** | TWO OPTIONAL ENGINES CAN TAKE EXCURSION UP TO 11,000 POUNDS OF TOWING CAPABILITY (WHEN PROPERLY EQUIPPED): THE 7.3L POWER STROKE™ V8 TURBO DIESEL (525 FT-LB TORQUE@1600 RPM) AND THE 6.8L V10 (425 FT-LB TORQUE@3250 RPM).



## Standard Equipment on Excursion 4x2 and 4x4:

### Mechanical

- 5.4L SEFI Triton™ V8 Engine (4x2)
- 6.8L Triton V10 Engine (4x4)
- Rear Wheel Drive (4x2)
- 4WD Electronic Shift-On-The-Fly (4x4)
- 4-Speed Automatic Transmission
- 16" Chromed Steel Wheels with LT265/75R16 All-Season OWL Tires
- Front Stabilizer Bars
- Heavy Duty Trailer Towing Package – 7-Pin Wire Harness, Trailer Brake Wiring Kit
- Power Disc Brakes and Power Steering

### Safety/Security

- Airbags\* – Driver and Front Passenger
- Anti-Lock Braking System (4-Wheel)
- Autolocks
- Battery Saver
- Child Safety Locks (Rear Passenger Doors)
- SecuriLock™ Passive Anti-Theft System
- Lower Anchors for Child Safety Seats

### Interior

- 40/20/40 Split-Bench Front Seat with Driver's Side Lumbar
- 2nd-Row 60/40 Split Bench with Center Armrest and Cupholders
- 3rd-Row Removable Fold-Flat Bench Seat with Rollers
- Air Conditioning – Front with Auxiliary Rear
- Cargo Net with Tie Downs
- Cupholders – 6 (XLT), 10 (Limited)

- Electrochromic Rearview Mirror
- Floor Mats (1st and 2nd Rows)
- Heated Outside Mirrors
- Keyless Entry Keypad (Driver Door)
- Leather-Wrapped Steering Wheel
- Overhead Console with Auxiliary A/C Controls
- Power Points – 4 (XLT), 5 (Limited)
- Power Windows, Door Locks and Mirrors
- Premium AM/FM Dual Media 80-Watt with Amplifier, Cassette and Single CD
- Privacy Glass
- Rear-Seat Heat Ducts
- Remote Keyless Entry
- Speed Control
- Tilt Steering
- Visors with Lighted Vanity Mirror and Sun Blades

### Exterior

- 44 Gallon Fuel Tank
- Bodyside Cladding – Platinum (XLT), Arizona Beige (Limited)
- Crystalline Headlamps
- Front Tow Hooks
- Roof Rack
- Running Boards
- Tri-Panel Rear Doors™
- Wiper/Washer – Front Intermittent
- Wiper/Washer – Rear Intermittent with Defroster

## Excursion XLT

Includes all of the standard Excursion features.

### Options

- 4x4 System – Electronic Shift-on-the-Fly
- 6.8L Triton V10 Engine (4x2, Standard on 4x4)
- 7.3L Power Stroke® Diesel Engine
- AM/FM Stereo with In-Dash 6-CD
- Limited Slip Axle
- Power Adjustable Pedals
- Trailer Tow Mirrors – Power, Heated with Manual Telescopic Forward-Fold Arms



**EXCURSION XLT**

\*Always wear your safety belt and secure children in the rear seat. Signal is a registered trademark of K.W. Muth Co., Inc. Following publication of the catalog, certain changes in standard equipment, options and the like, or product delays, may have occurred which would not be included in these pages. Your Ford Dealer is the best source for up-to-date information. Ford Division reserves the right to change product specifications at any time without incurring obligations. Features shown may be offered only in combination with other options or subject to additional ordering requirements or limitations. Competitive comparisons based on publicly available information at time of printing.



**Excursion XLT Premium**

Includes all of the XLT features plus:

- 16" Aluminum Wheels
- 6-Way Power Driver and Front Passenger Seats
- Automatic Headlamps
- Front Captain's Chairs
- Comfort & Convenience Group (Adds Illuminated Running Boards, Power Rear Quarter Windows, Trip Computer, Paint Stripe, Rear Audio Controls)

**Options**

- 4x4 System – Electronic Shift-on-the-Fly
- 6.8L Triton V10 Engine (4x2, Standard on 4x4)
- 7.3L Power Stroke Diesel Engine
- AM/FM Stereo with In-Dash 6-CD
- Leather Seating Surfaces
- Limited Slip Axle
- Power Adjustable Pedals
- Rear Seat Entertainment System
- Reverse Sensing System
- Trailer Tow Mirrors – Power Heated with Manual Telescopic Forward-Fold Arms

**EXCURSION XLT PREMIUM****Excursion Limited**

Includes all of the XLT Premium features plus:

- 16" Limited Aluminum Wheels
- Bodyside Cladding/Wheel Lip Moldings – Arizona Beige with Chrome Inlays
- Electronic Automatic Temperature Control
- Fog Lamps
- Illuminated Running Boards – Arizona Beige
- Power Adjustable Pedals
- Premium Leather Seating Surfaces
- Reverse Sensing System
- Signal® Mirrors
- Speed-Dependent Front Windshield Wipers

**Options**

- 4x4 System – Electronic Shift-on-the-Fly
- 6.8L Triton V10 Engine (4x2, Standard on 4x4)
- 7.3L Power Stroke Diesel Engine
- AM/FM Stereo with In-Dash 6-CD
- Heated Front Seats
- Limited Slip Axle
- Rear Seat Entertainment System
- Trailer Tow Mirrors – Power Heated with Manual Telescopic Forward-Fold Arms
- Limited Premier Group (See Pg. 76)

**EXCURSION LIMITED****Excursion Limited Ultimate**

Includes all of the Limited features plus:

- Deluxe Steering Wheel with Dual A/C and Audio Controls
- Heated Front Seats
- Homelink® Universal Garage Door Opener
- Memory Driver's Seat
- Power Memory Adjustable Pedals

**Options**

- 4x4 System – Electronic Shift-on-the-Fly
- 6.8L Triton V10 Engine (4x2, Standard on 4x4)
- 7.3L Power Stroke Diesel Engine
- 2nd Row Captain's Chairs with Inboard Armrests ("Quad" Seating)
- AM/FM Stereo with In-Dash 6-CD
- Limited Slip Axle
- Rear Seat Entertainment System
- Trailer Tow Mirrors – Power Heated with Manual Telescopic Forward-Fold Arms
- Limited Premier Group (See Pg. 76)

**EXCURSION LIMITED ULTIMATE**



	ESCAPE	EXPLORER SPORT	EXPLORER SPORT TRAC	EXPLORER 4 DOOR	EXPEDITION	EXCURSION
	4x2 • 4x4	4x2 • 4x4	4x2 • 4x4	4x2 • 4x4	4x2 • 4x4	4x2 • 4x4
<b>A</b> OVERALL LENGTH	173.0"	180.4"	205.9"	189.5"	204.6"	226.7"
<b>B</b> WHEELBASE	103.1"	101.8"	125.9"	113.7"	119.0"	137.1"
<b>C</b> OVERHANG FRONT	33.4"	34.6"	34.6"	31.7"	38.7"	37.4"
<b>D</b> REAR	36.4"	44.0"	45.4"	44.1"	46.9"	52.3"
<b>E</b> OVERALL WIDTH	70.1"	70.2"	71.8"	72.1"	78.6"	80.0"
<b>F</b> HEIGHT (EMPTY, INCLUDES ROOF RACK WHERE APPLICABLE)	69.1"	68.4" • 68.3"	70.5" • 70.4"	71.4"	74.3" • 76.6"	77.2" • 80.2"
<b>G</b> GROUND CLEARANCE (EMPTY)	7.8"	6.7"	6.7"	8.5"	8.5"	8.11"
<b>H</b> LOAD FLOOR HEIGHT (EMPTY)	25.4"	29.1"	32.4"	30.6"	33.4" • 35.3"	36.1" • 39.2"
<b>I</b> RAMP BREAKOVER ANGLE (EMPTY)	20.0°	22.9° • 22.8°	22.3° • 22.4°	18.2°	22.0° • 22.5°	6.8° • 7.0°
<b>J</b> ANGLE OF DEPARTURE	22.0°	22.8° • 22.9°	22.4° • 22.5°	23.6°	19.1° • 21.0°	11.6° • 15.1°
<b>K</b> ANGLE OF APPROACH	28.5°	28.1° • 28°	26.8° • 26.6°	31°	21.8° • 26.8°	20.3° • 25.0°
SEATING (MAXIMUM)	5	4	5	7	9	9

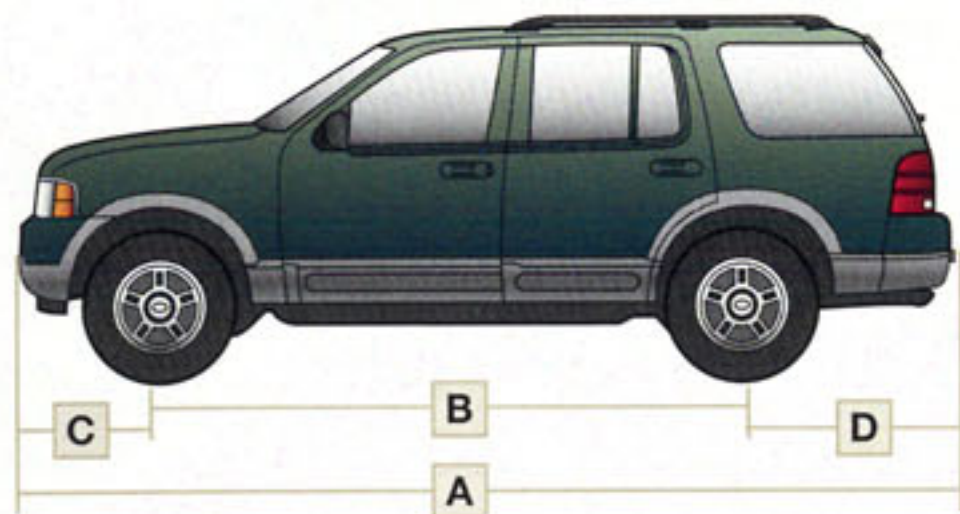


**A** | OVERALL LENGTH MEASURES FROM THE REAR BUMPER TO THE FRONT BUMPER.

**B** | WHEELBASE MEASURES THE DISTANCE BETWEEN THE CENTERS OF THE FRONT AND REAR WHEELS (OR AXLE).

**C** | FRONT OVERHANG MEASURES THE DISTANCE FROM THE CENTER OF THE FRONT WHEEL (OR AXLES) TO FRONT BUMPER.

**D** | REAR OVERHANG MEASURES THE DISTANCE FROM THE CENTER OF THE REAR WHEEL (OR AXLE) TO REAR BUMPER.



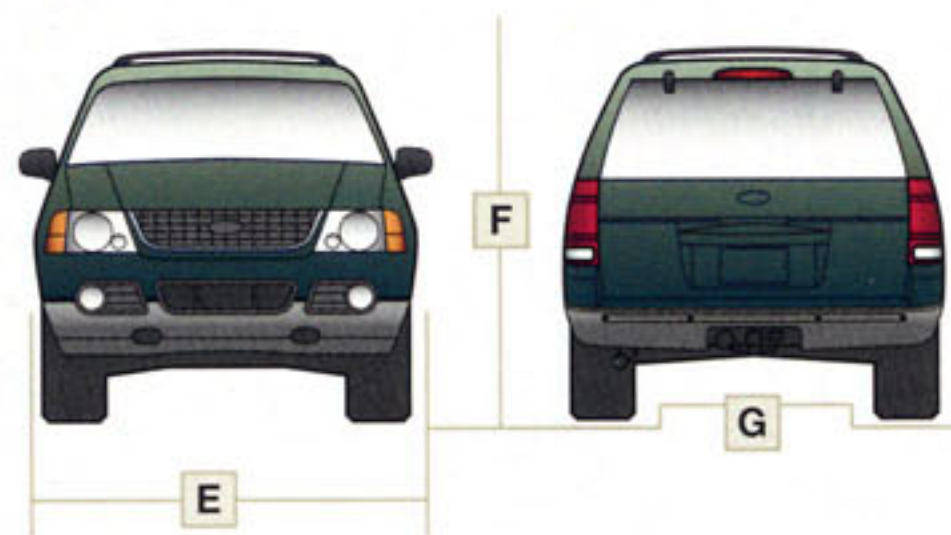
**H** | LOAD FLOOR HEIGHT MEASURES THE DISTANCE FROM GROUND TO CARGO FLOOR.

**I** | RAMP BREAKOVER ANGLE MEASURES THE MAXIMUM ANGLE OF A RISE THAT THE VEHICLE CAN CLEAR BETWEEN ITS FRONT AND REAR WHEELS.

**E** | OVERALL WIDTH MEASURES THE WIDEST POINT AT THE SIDES OF THE VEHICLE EXCLUDING MIRRORS.

**F** | HEIGHT MEASURES FROM THE GROUND TO THE HIGHEST POINT ON THE ROOF RACK OF THE EMPTY VEHICLE.

**G** | GROUND CLEARANCE MEASURES BETWEEN THE GROUND AND THE LOWEST POINT OF THE VEHICLE.

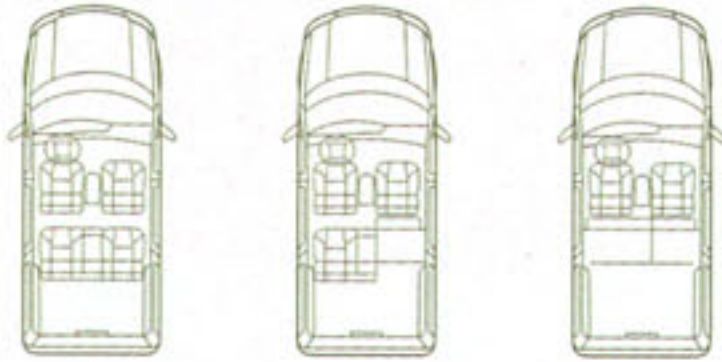


**J** | ANGLE OF DEPARTURE MEASURES THE ANGLE BETWEEN THE GROUND FROM THE TRAILING EDGE OF THE REAR BUMPER (OR LOWEST REAR COMPONENT) TO A TANGENT WITH THE REAR TIRE.

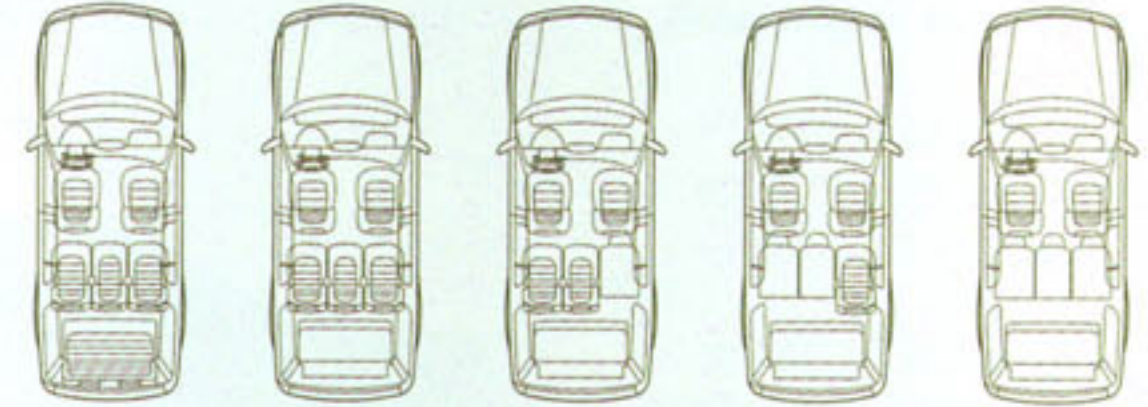
**K** | ANGLE OF APPROACH MEASURES THE ANGLE BETWEEN THE GROUND FROM THE LEADING EDGE OF THE FRONT BUMPER (OR LOWEST FRONT COMPONENT) TO A TANGENT WITH THE FRONT TIRE.



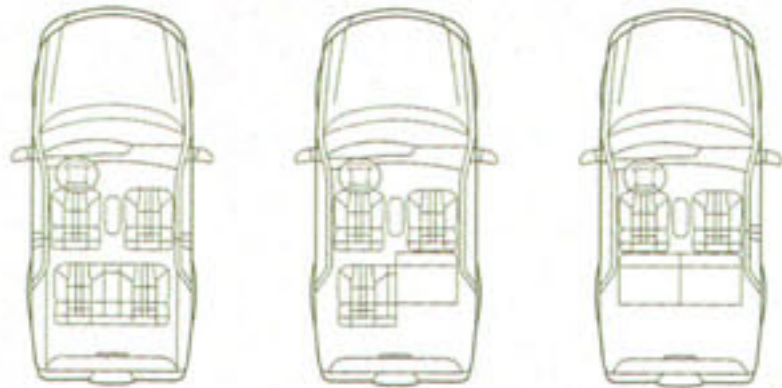
**ESCAPE |** XLS SEATS 5. REAR SEAT CAN TIP AND FOLD FLAT. XLT SEATS 5. REAR 60/40 SPLIT BENCH SEAT CAN TIP AND FOLD FLAT, ONE SIDE OR BOTH.



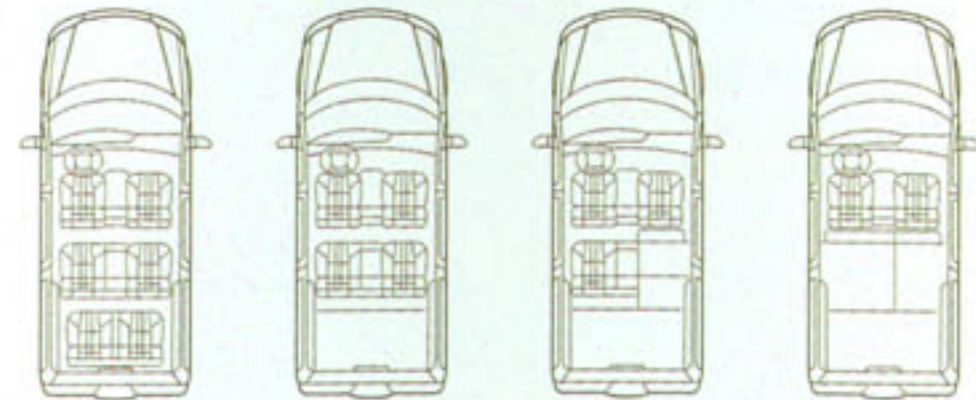
**EXPLORER |** SEATS UP TO 7. 2ND-ROW OPTIONAL 40/20/40 SPLIT BENCH SEAT CAN TIP AND FOLD FLAT. THE OPTIONAL 3RD-ROW BENCH SEAT CAN FOLD NEATLY AWAY. WITHOUT 3RD-ROW, 2ND-ROW FEATURES A 60/40 SPLIT BENCH SEAT.



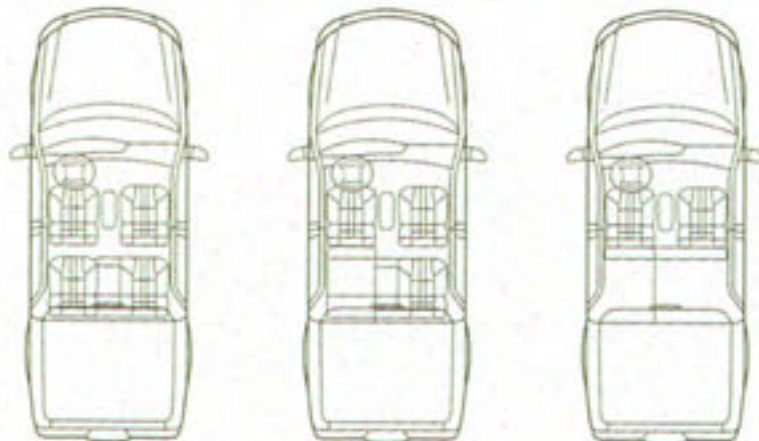
**EXPLORER SPORT |** EXPLORER SPORT SEATS 4. REAR 50/50 SPLIT BENCH SEAT CAN TIP AND FOLD FLAT, ONE SIDE OR BOTH.



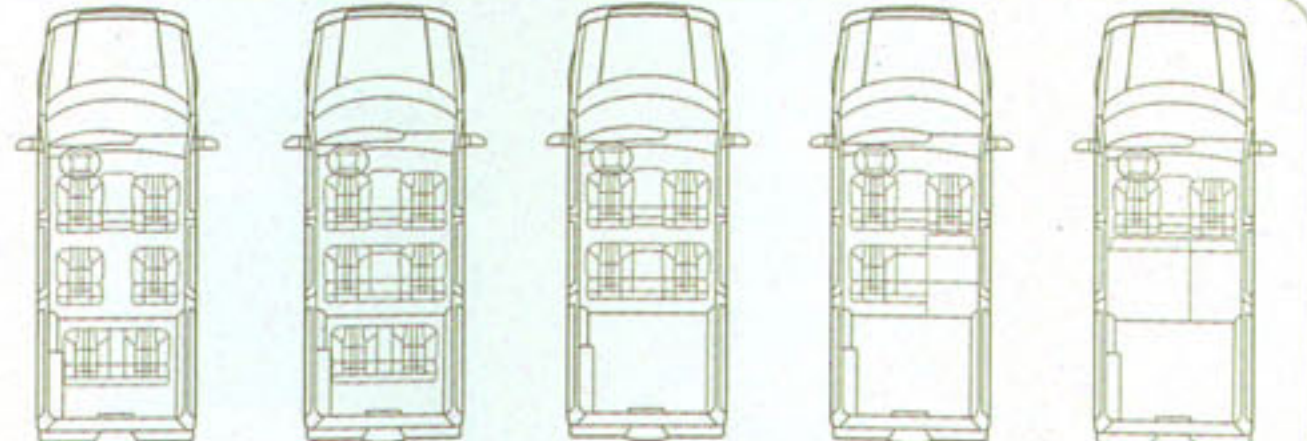
**EXPEDITION |** EXPEDITION SEATS UP TO 9. 2ND-ROW 60/40 SPLIT BENCH SEAT CAN TIP AND FOLD FLAT AND 3RD-ROW BENCH SEAT IS REMOVABLE.



**EXPLORER SPORT TRAC |** EXPLORER SPORT TRAC SEATS 5. REAR 60/40 SPLIT BENCH SEAT CAN TIP AND FOLD FLAT, ONE SIDE OR BOTH.



**EXCURSION |** EXCURSION SEATS UP TO 9. NEW 2ND-ROW CAPTAIN'S CHAIRS ARE AVAILABLE. STANDARD 2ND-ROW 60/40 SPLIT BENCH SEAT CAN TIP AND FOLD FLAT, ONE SIDE OR BOTH, AND 3RD-ROW BENCH SEAT IS REMOVABLE.





	ESCAPE	EXPLORER SPORT	EXPLORER SPORT TRAC	EXPLORER 5 PASSENGER • 7 PASSENGER	EXPEDITION	EXCURSION
<b>FIRST ROW</b>						
HEAD ROOM	40.4"	39.4"	39.4"	39.9"	39.8"	41"
SHOULDER ROOM	56.3"	56.7"	56.7"	59.1"	63.9"	68.3"
HIP ROOM	53.4"	51.9"	52.7"	55.0"	61.5"	67.5"
LEG ROOM	41.6"	42.4"	42.4"	42.4"	40.9"	42.3"
<b>SECOND ROW</b>						
HEAD ROOM	39.2"	39.1"	38.9"	38.9"	39.8"	41.1"
SHOULDER ROOM	55.9"	57.9"	56.9"	58.9"	64.4"	67.0"
HIP ROOM	49.0"	43.6"	52.7"	54.3"	62.3"	66.9"
LEG ROOM	36.4"	36.6"	37.8"	37.2"	38.9"	40.5"
<b>THIRD ROW</b>						
HEAD ROOM	–	–	–	39.0"	35.0"	38.6"
SHOULDER ROOM	–	–	–	52.4"	66.7"	64.9"
HIP ROOM	–	–	–	45.4"	59.8"	52.5"
LEG ROOM	–	–	–	34.8"	27.0"	39.0"
MAXIMUM CARGO VOLUME* (CU. FT.)	64.8	71.4	–	88 • 81.7	110.7	146.4
BEHIND 2ND ROW (CU. FT.)	33.0	35.5	–	46.6 • 44.5	60.9	100.7
BEHIND 3RD ROW (CU. FT.)	–	–	–	– • 13.8	20.5	48.0

\* WITH 3RD-ROW SEATS REMOVED OR FOLDED (WHERE APPLICABLE) AND 2ND-ROW SEATS FOLDED OR FLIPPED DOWN.



	ENGINE	HORSEPOWER	TORQUE
ESCAPE	2.0L I4 ZETEC 5-SPEED MANUAL	127 @ 5400	135 @ 4500
	3.0L V6 DURATEC AUTOMATIC	201 @ 5900	196 @ 4700
EXPLORER SPORT	4.0L V6 5-SPEED MANUAL/ AUTOMATIC	203 @ 5250	237 @ 3000
EXPLORER SPORT TRAC	4.0L V6 5-SPEED MANUAL/ AUTOMATIC	210 @ 5200	240 @ 3000
EXPLORER	4.0L V6 5-SPEED MANUAL/ AUTOMATIC	210 @ 5100	254 @ 3700
	4.6L V8 AUTOMATIC	239 @ 4750	282 @ 4000
EXPEDITION	4.6L V8 AUTOMATIC	232 @ 4750	291 @ 3450
	5.4L V8 AUTOMATIC	260 @ 4500	350 @ 2500
EXCURSION	5.4L V8 AUTOMATIC	255 @ 4500	350 @ 2500
	6.8L V10 TRITON™ AUTOMATIC	310 @ 4250	425 @ 3250
	7.3L V8 POWER STROKE® AUTOMATIC	250 @ 2600	525 @ 1600

	AXLE RATIO	ESCAPE 4x2 • 4x4	EXPLORER SPORT 4x2 • 4x4	EXPLORER SPORT TRAC 4x2 • 4x4	EXPLORER 4x2 • 4x4	EXPEDITION 4x2 • 4x4	EXCURSION 4x2 • 4x4
2.0L I4 5-SPD MANUAL	2.93	1000	— • —	— • —	— • —	— • —	— • —
	2.93	2000	— • —	— • —	— • —	— • —	— • —
3.0L V6 4-SPD AUTOMATIC	2.93	3500*	— • —	— • —	— • —	— • —	— • —
	2.93		— • —	— • —	— • —	— • —	— • —
4.0L SOHC V6 5-SPD MANUAL	3.73	— • —	3060 • 2840	2740 • 2480	2700 • 2500	— • —	— • —
4.0L SOHC V6 5-SPD AUTOMATIC	3.55	— • —	— • —	— • —	3500* • 3500*	— • —	— • —
	3.73	— • —	5120 • 4880	5300 • 5040	5940 • 5500	— • —	— • —
4.6L V8 4-SPD AUTOMATIC	3.31	— • —	— • —	— • —	— • —	6300 • —	— • —
	3.55	— • —	— • —	— • —	3500* • 3500*	— • 6000	— • —
	3.73	— • —	— • —	— • —	7300 • 7000	— • —	— • —
5.4L V8	3.31	— • —	— • —	— • —	— • —	6700 • 6400	— • —
	3.55	— • —	— • —	— • —	— • —	7700 • 7400	— • —
	3.73	— • —	— • —	— • —	— • —	8200 • 7900	6200 • —
	4.10	— • —	— • —	— • —	— • —	— • —	— • 7200
6.8L V10	3.73	— • —	— • —	— • —	— • —	— • —	10000 • 9600
	4.30	— • —	— • —	— • —	— • —	— • —	10500 • 11000
7.3L V8 TURBO DIESEL	3.73	— • —	— • —	— • —	— • —	— • —	10500 • 11000

\*With Class II Trailer Towing Group.



ESCAPE |



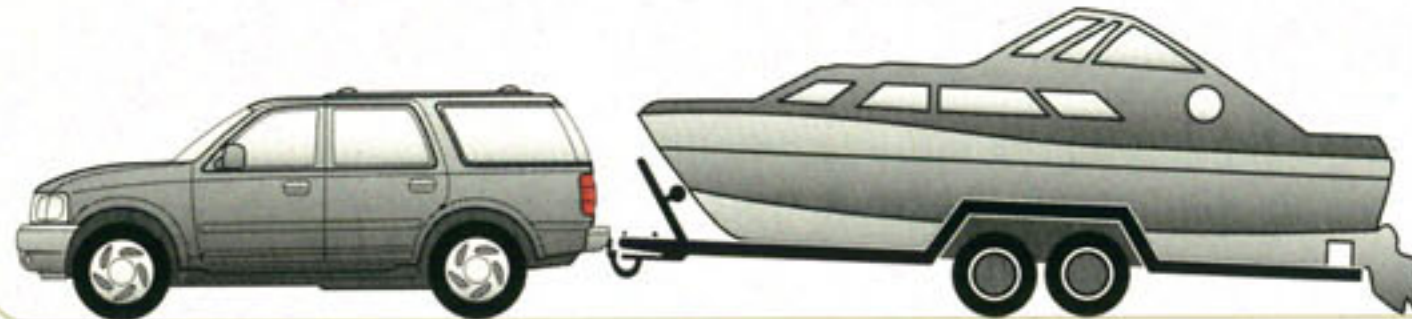
EXPLORER |



EXPLORER SPORT |



EXPEDITION |



EXPLORER SPORT TRAC |



EXCURSION |



treadlightly®

LEAVING A GOOD IMPRESSION



“Tread Lightly!” is an educational program designed to increase the awareness of land-use regulations and responsibilities in our wilderness areas. Ford joins the U.S. Forest Service and the Bureau of Land Management in encouraging you to preserve our national forests and other public and private lands by “treading lightly.”



**Ford Credit's Red Carpet Lease** Many lease managers have completed hours of training in a Red Carpet Lease program designed to make us the best in the business. We think you'll find a Red Carpet Lease the best way to lease.

Under the New Vehicle Limited Warranty, you'll receive bumper-to-bumper no-deductible coverage on your new Ford vehicle for 3 years/36,000 miles. You'll also receive unlimited-mileage, no-deductible corrosion perforation coverage for five years. Ask your Ford Dealer for a copy of this warranty.

During its 3-year/36,000-mile limited warranty period, every new Ford vehicle includes the assurance and support of a 24-hour emergency Roadside Assistance program. Roadside Assistance includes such services as fuel delivery, tire changes, jump starts, and help when you are locked out of your vehicle. Ask your Ford Dealer for complete details about this program.

Complete information on our vehicle lineup is available on our web site. To get more information before you visit your Ford Dealer, please visit us at [www.fordvehicles.com](http://www.fordvehicles.com). Likewise, to get details on various financing options available on your new Ford vehicle, please visit our web site at [www.fordcredit.com](http://www.fordcredit.com). Doing so can give you a head start before talking to your Ford Dealer about financing your new Ford vehicle.







**NO BOUNDARIES**  
FORD OUTFITTERS





[www.fordvehicles.com](http://www.fordvehicles.com)

see • configure • compare • find

