

F O R D 1 9 9 2

Ford Trucks





THE NEW F-SERIES.
RAISING YOUR
EXPECTATIONS
ABOUT PICKUPS.

So it isn't surprising that Ford F-Series has the highest owner loyalty among trucks in its class.* But you can't conclude that it's resting on its laurels.

On the contrary, the Ford F-Series for 1992 is forging aggressively ahead.

For 1992, we kept all of what you traditionally look for in a truck by way of performance and off-road versatility. But we've added a lot of the comfort and styling you'd normally expect to find in a car.

For example, we've redesigned the instrument panel, making it more

No one knows more about trucks than Ford. We've been building them for seventy-five years.

Our reputation has been earned in every segment of the truck market: personal use, commercial, agriculture.

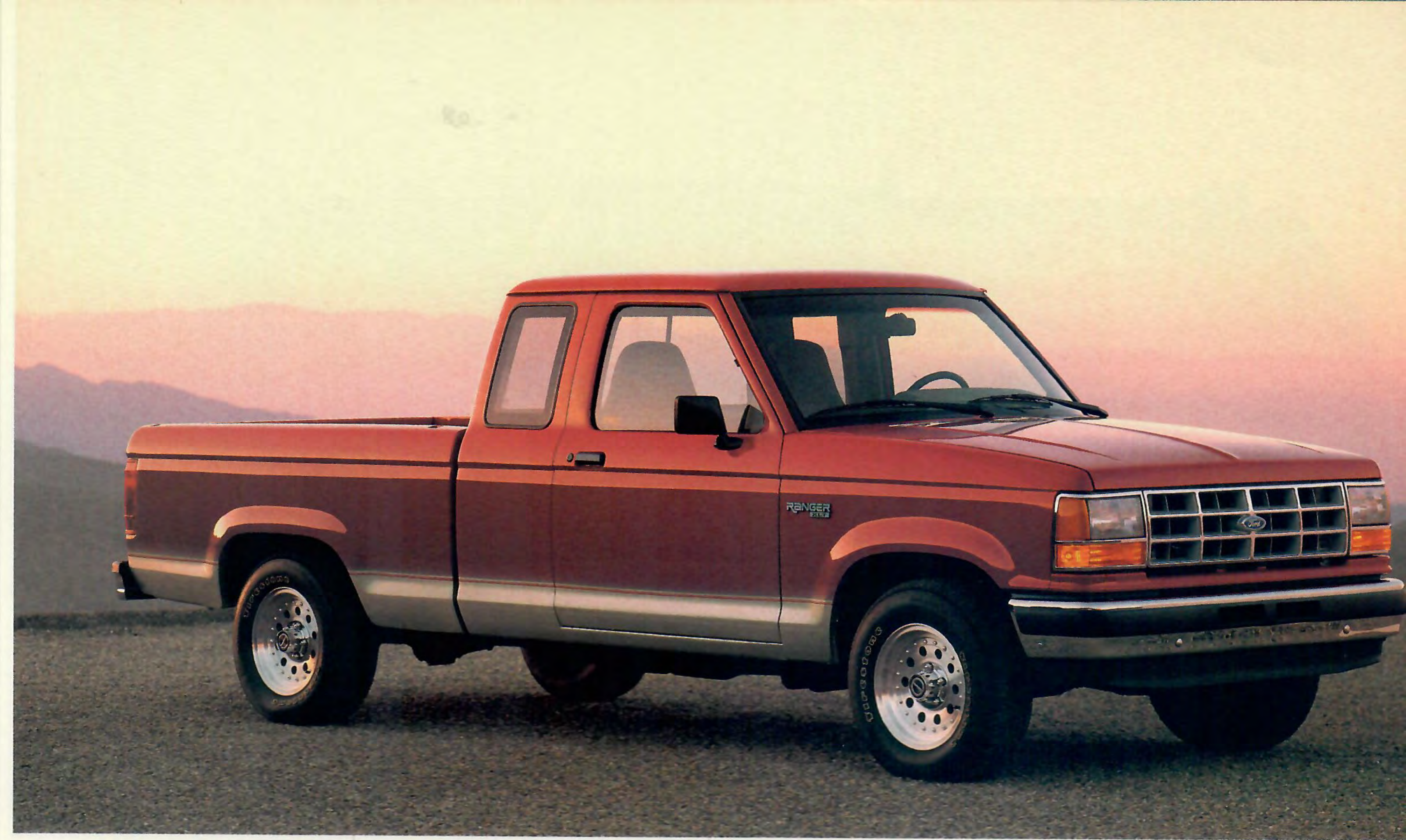


ergonomic, contemporary and driver friendly – right down to a Power Point electrical outlet for coffee pots and shavers during break time. We've also reshaped the front end. It's another example of what we mean when we say "The Best Never Rest."

The F-150 XLT Lariat Regular Cab is shown at the top in Bright Red with a Dark Grey Metallic lower accent two-tone. The SuperCab XLT Lariat interior shown above is in Dark Charcoal. It includes such standard features as air conditioning; door trim cloth insert and storage bin; rear cloth bench seat with 3-point outboard safety belts; black leather-wrapped steering wheel and more.

Shown at left, the F-150 Regular Cab "Nite" truck in Raven Black with special bodyside tape stripes. Some equipment shown on these pages is optional.

*Based on 1990 New Vehicle Buyer Study.



RANGER OUTSELLS
EVERY OTHER
COMPACT TRUCK,
YEAR AFTER YEAR.

More engines with multi-port fuel injection than in any other compact truck.

The superior convenience of Ford's exclusive push-button Touch Drive transfer case, standard in every 4x4.

Consider also improvements like more corrosion-fighting 2-sided galvanized steel. You'll see why Ranger has been the best in its class in sales. And you'll also begin to see what we mean when we say, at Ford, "The Best Never Rest."

Sport performance and styling. Pickup utility and toughness. Nobody puts it all together in a compact truck better than Ford.

Ranger is America's best seller in its class. Year after year, it outsells everything else. Because it simply does the best job of meeting the diverse needs of people who drive compact pickups.

There are other reasons for Ranger's tremendous popularity. Among them:



Ranger XLT SuperCab pickup shown at the top. Above is the Ranger SuperCab interior with 60/40 split bench seat.



At left: Ranger Sport Regular Cab in Raven Black with unique Magenta and Blue sport tape stripe. Some equipment shown on these pages is optional.



AMERICA'S
BEST-SELLING
COMPACT UTILITY.

other automatic 4x4 system. So impressive are Explorer's abilities that *Four Wheeler* magazine named it "Four Wheeler of the Year" in 1990 and again in 1991.

Explorer is also available, of course, in a 4x2 model.

What's more, Explorer is best in class in overall spaciousness, with more total room for passenger comfort and cargo-carrying utility.

Test-drive America's No. 1 compact utility vehicle today, at your nearest Ford Dealer.



Explorer Eddie Bauer 4-Door above is in Cayman Green Clearcoat Metallic/Mocha. The Eddie Bauer interior is in Mocha (see your dealer for availability date of the cloth seat sew style shown).

Across America, more drivers of compact utilities chose Explorer last year than any other compact utility. Because Explorer has everything they look for. Style. Performance. Versatility.

Explorer is contemporary in style and aerodynamic. And its 4.0L multi-port fuel-injected V-6 moves you with authoritative performance.

The handling is responsive. And the power brakes feature a computer-controlled rear anti-lock system.

The Explorer 4x4 features the push-button ease of our Touch-Drive electric shift transfer case, with convenience unmatched by any



The Eddie Bauer 2-Door Sport model is yet another way to express your independence in Explorer. Shown here in Brilliant Blue Clearcoat Metallic. Some equipment shown on these pages is optional.



AMERICA'S
BEST-SELLING
FULL-SIZE 4x4
UTILITY TRUCK.

To make Bronco for 1992 the sharpest Bronco ever, we re-designed the instrument panel. Then added new interior and exterior color schemes and styles.

In addition, the frame receives a special wax coating for improved protection against corrosion.

All this with your choice of electronically fuel-injected, multiple-port I-6 or V-8

(optional) engines; 5-speed manual overdrive and 4-speed electronic overdrive (optional) transmissions. Plus four trim levels: Custom, premium Eddie Bauer, the popular XLT, and the exciting Bronco XLT "Nite" model.

This is the new 1992 Bronco. Another example that, at Ford Truck, "The Best Never Rest."

Bronco Eddie Bauer, shown above in Raven Black/Mocha, includes a 5.0L EFI V-8 engine with 5-speed manual overdrive transmission; a special Eddie Bauer paint scheme; carpeted front and rear floor mats; deep-dish forged aluminum wheels; plus outside swing-away spare tire carrier.

Ford Bronco has been the best-selling full-size utility truck in America for twelve years running.

At Ford, we don't sit on our reputation. Bronco for 1992 has been improved.

For openers, we've given it a more modern look by re-styling the front end.



Eddie Bauer Interior shown in Mocha. Some equipment shown on these pages is optional.



INTRODUCING THE NEXT-GENERATION FULL-SIZE VAN.

While our competitors remain pretty much where we left them over 15 years ago, we have moved our Club Wagon yet another generation ahead.

The new Club Wagon is designed to be the highest-quality full-size passenger van we have ever built.

And Club Wagon has more safety features than ever before. Like the Regular Club Wagon driver air bag (not available in HD Wagon or Super Wagon) that supplements your safety belts. High-mount rear stop lamp and rear outboard 3-point lap and shoulder belts, too. And all Club Wagons come with computer-controlled

rear anti-lock brakes.

The benefits of advanced aerodynamics — better wind resistance and improved acoustics — have arrived at last in a full-size van.

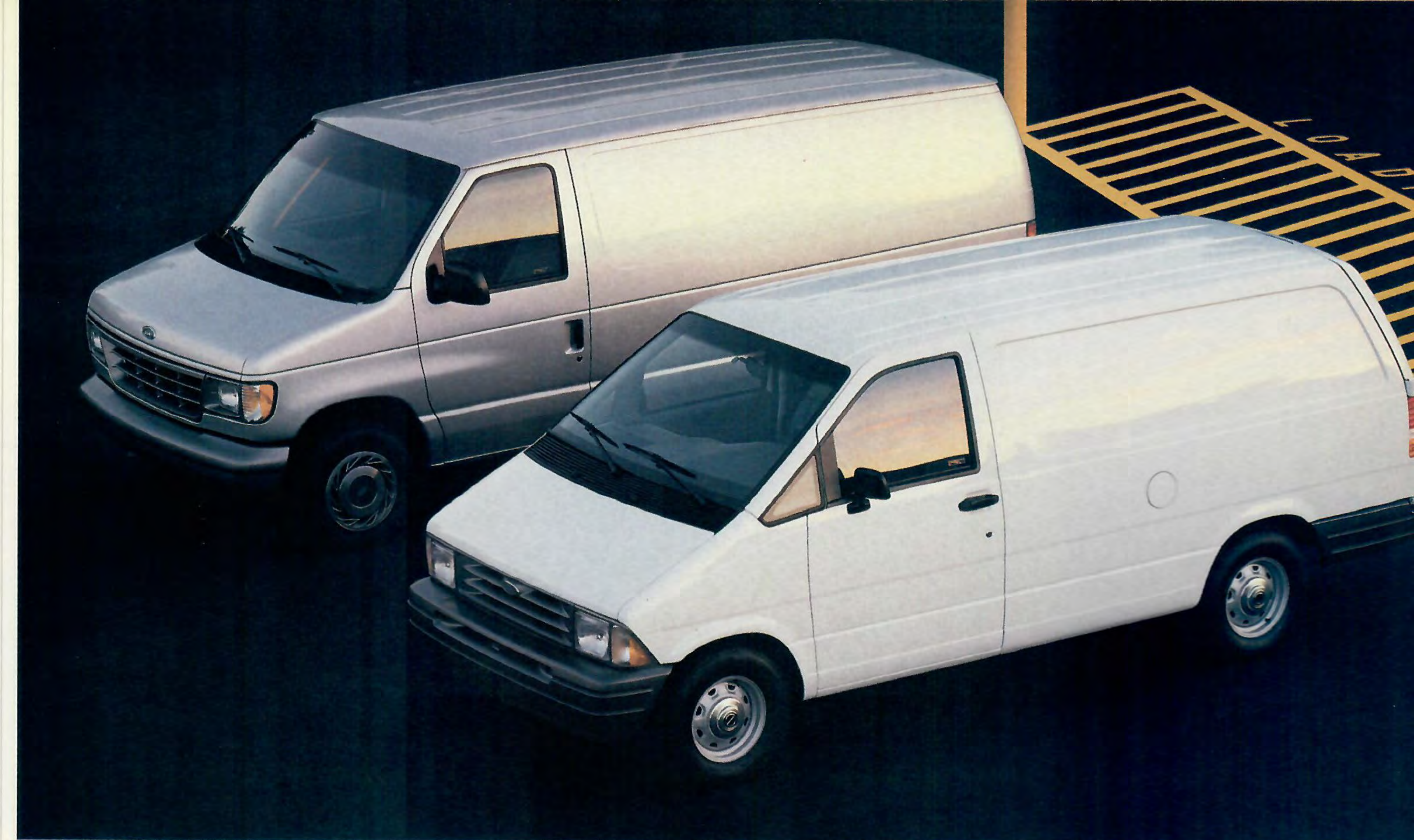
Inside, there's plenty of room. And more car-like comforts. Plus much more that will surprise and delight you.

After you have seen and test-driven the 1992 Ford Club Wagon, you'll have experienced precisely what we mean when we say, "The Best Never Rest."

The Club Wagon Chateau has a unique lower two-tone paint treatment, shown here in Twilight Blue Clearcoat Metallic and Crystal Blue Clearcoat Metallic.



The elegant Club Wagon Chateau is as close as a van can come to being a luxurious van conversion without actually being converted. Among its numerous standard features are quad captains chairs and the combination rear seat/bed, shown here in Crystal Blue. Some equipment shown on these pages is optional.



AEROSTAR VAN AND THE NEW FORD ECONOLINE.

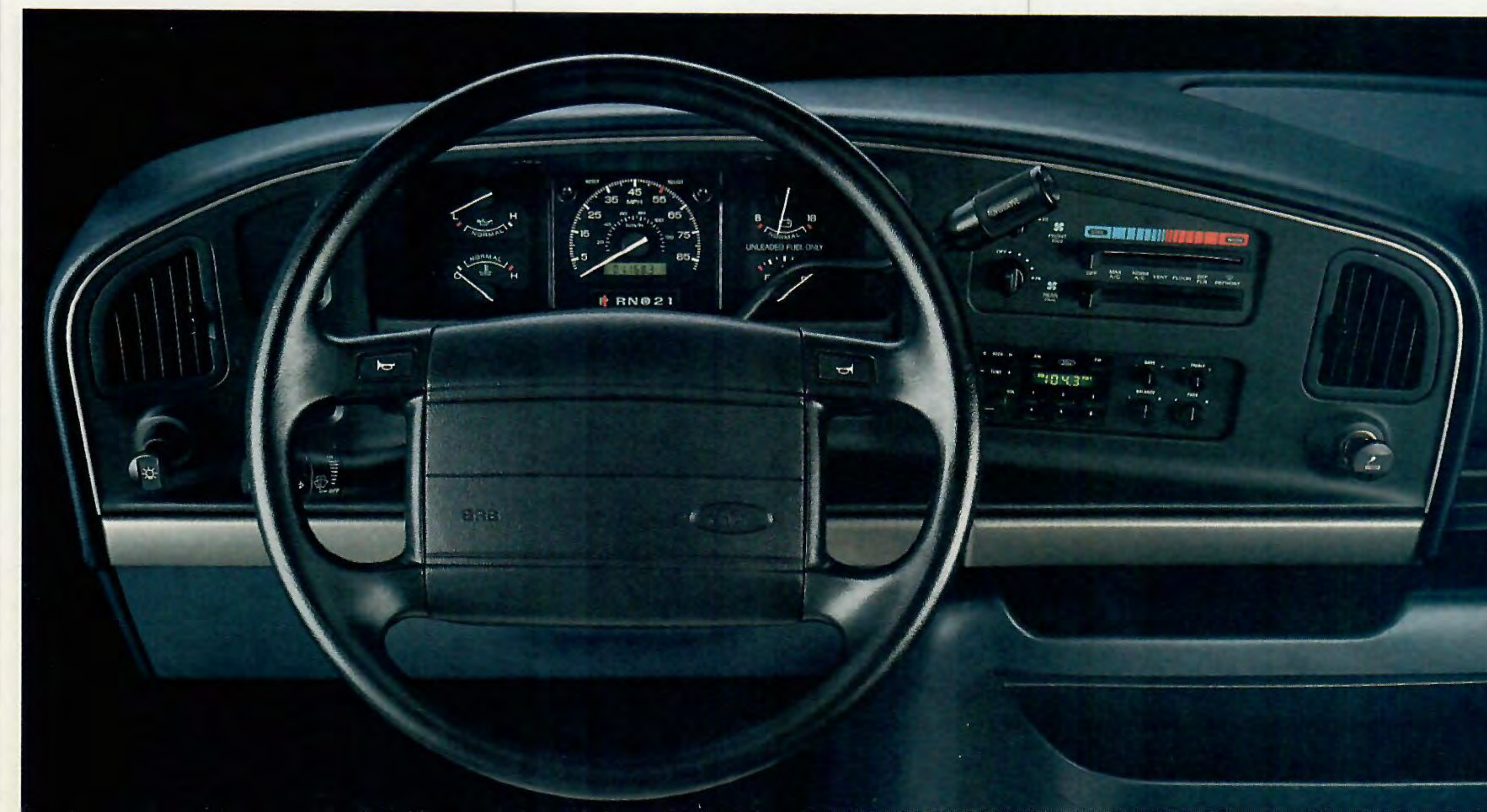
1992 Econoline. This full-size van is the finest we've ever built. There's a new ergonomically designed instrument panel for easier operation. A 60/40 side door opening for more versatile

loading. Steering and suspension improvements for excellent ride and handling, even when loaded. Strong sheet metal in Econoline's double-wall construction protects your cargo from harm while it resists being harmed by your cargo. There's easy adaptability for special needs like aftermarket bodies and conversions. And a new driver air bag that supplements the safety belts is standard equipment (all models except E-350).

Aerostar just keeps getting better and better, with a new ergonomic instrument panel designed to make the daily drive easier. It includes a column shift for automatic transmissions which frees floor space for the new mini console. A driver air bag, which supplements the safety belts, is standard.

Aerostar's wide choice of powertrains and body styles in either 2 or 4-wheel drive makes finding the right one to fit your job easy indeed.

Econoline Van shown in Silver Clearcoat Metallic and Aerostar Extended Van shown in Oxford White.



Econoline instrumentation shown in Crystal Blue. Some equipment shown on these pages is optional.

F-SERIES PICKUP 4.9L I-6 engine, multi-port electronic fuel injection and EEC-IV computer controls 5-speed manual OD transmission	Twin-Beam independent front suspension (4x2 models) Twin-Traction Beam independent front suspension (4x4)	Power front disc brakes; rear drum brakes with rear anti-lock system Nitrogen gas-pressurized shocks	Automatic locking hubs (4x4) Two-speed transfer case (4x4) Power steering
RANGER PICKUP 2.3L I-4, 3.0L V-6 (4x2) or 2.9L V-6 (4x4) — standard engine depends on model and trim level, EEC-IV computer-controlled multi-port fuel injection	5-speed manual OD transmission Twin-Beam independent front suspension (4x2)	Twin-Traction Beam independent front suspension (4x4) Power front disc brakes; rear drum brakes with rear anti-lock system	Nitrogen gas-pressurized shocks Touch Drive electric shift transfer case (4x4)
EXPLORER 4.0L V-6 with multi-port electronic fuel injection and EEC-IV computer controls 5-speed manual OD transmission	Twin-Beam independent front suspension (4x2) Twin-Traction Beam independent front suspension (4x4)	Power front disc brakes; rear drum brakes with rear anti-lock system Nitrogen gas-pressurized shocks	Touch Drive Electronic Shift transfer case (4x4) Power steering
BRONCO 4.9L I-6 engine (Custom and XLT) with multi-port electronic fuel injection and EEC-IV computer controls 5.0L V-8 engine (Eddie Bauer) with	multi-port electronic fuel injection and EEC-IV computer controls 5-speed manual OD transmission Twin-Traction Beam independent	front suspension Power front disc brakes; rear drum brakes with rear anti-lock system Nitrogen gas-pressurized shocks	Automatic locking hubs Two-speed transfer case w/skid plate Power steering
CLUB WAGON 4.9L I-6 multi-port electronic fuel injection and EEC-IV computer controls 4-speed automatic OD transmission	Twin-Beam independent front suspension Nitrogen gas-pressurized shocks	Power front disc brakes; rear drum brakes with rear anti-lock system Power steering	Regular Wagon driver air bag (not available in HD Regular Wagon or Super Wagon) that supplements the safety belts
ECONOLINE VAN 4.9L I-6 multi-port electronic fuel injection and EEC-IV computer controls 3-speed automatic transmission	Twin-Beam independent front suspension Power front disc brakes; rear drum brakes with rear anti-lock system	Nitrogen gas-pressurized shocks Power steering	Driver air bag (all models except E-350) with color-keyed integral lap/shoulder belts
AEROSTAR VAN 3.0L V-6 engine, multi-port electronic fuel injection and EEC-IV computer controls; 4.0L V-6 with extended length models and 4WD	5-speed manual OD transmission Power front disc brakes; rear drum brakes with rear anti-lock system	Nitrogen gas-pressurized shocks Power steering	Driver air bag with color-keyed integral lap/shoulder belts

6-YEAR/100,000-MILE CORROSION PROTECTION

Corrosion warranty coverage for outer body panel rust-through is 6 years or 100,000 miles, whichever comes first. See your Ford Dealer for a copy of this limited warranty.



Optional Ford Extended Service Plans cover major components on new Ford cars and light trucks for longer than the vehicle's basic warranty. Your dealer has full details.

PRODUCT CHANGES

Following publication of the catalog, certain changes in standard equipment, options, prices and the like, or product delays, may have occurred which would not be included in these pages. Your Ford Dealer is your best source for up-to-date information.

Ford Division reserves the right to change product specifications at any time without incurring obligations.

OPTIONS AVAILABILITY

Options shown or described in this catalog are available at extra cost and may be offered only in combination with other options or subject to additional ordering requirements or limitations.

MOTORCRAFT REPLACEMENT PARTS

Genuine Ford and Motorcraft original equipment replacement parts meet the same high standards as those installed in production.



"Tread Lightly" is an educational program designed to increase public awareness of land-use regulations and responsibilities in our nation's wilderness areas. Ford joins the U.S. Bureau of Land Management in encouraging you to help preserve our national forests and other public and private lands by "treading lightly."



Vehicle Leasing Plan

Ford Credit's Red Carpet Lease® program makes driving a new Ford even more pleasurable. With it, qualified lessees can drive a new car or truck every few years, and can generally select a more expensive vehicle (or one with more options) at a lower monthly payment. See your dealer today for details on Red Carpet Lease.

