



SPORTY, PERSONAL

# MUSTANG '72

...BETTER IDEAS FROM FORD



# MUSTANG. THE DRIVING MACHINE.

What Mustang does best is go places. It's an exciting new blend of beauty and action . . . at an easy-to-handle price. Once you drive it, you'll find it hard to be happy with anything else.

You'll like the solid, road-holding feel. The quick, smooth way Mustang moves. Its agility in traffic and sureness on turns. It's eager to go where you point, stop when you wish. Sheer driving pleasure. We call it The Driving Machine.

For '72, there are five sporty models: Hardtop, SportsRoof, Convertible, Grandé and Mach I. They come in 16 colors. Seven all-new shades, including two new Color Glow exterior paints—Ivy and Gold. There are four engines. Three of them V-8's. And a wide new variety of better idea options to encourage freedom of expression.

Mustang, more than ever, is designed to be designed by you. It gives you an almost infinite opportunity to design your own personal machine for whichever driving need you have in mind.

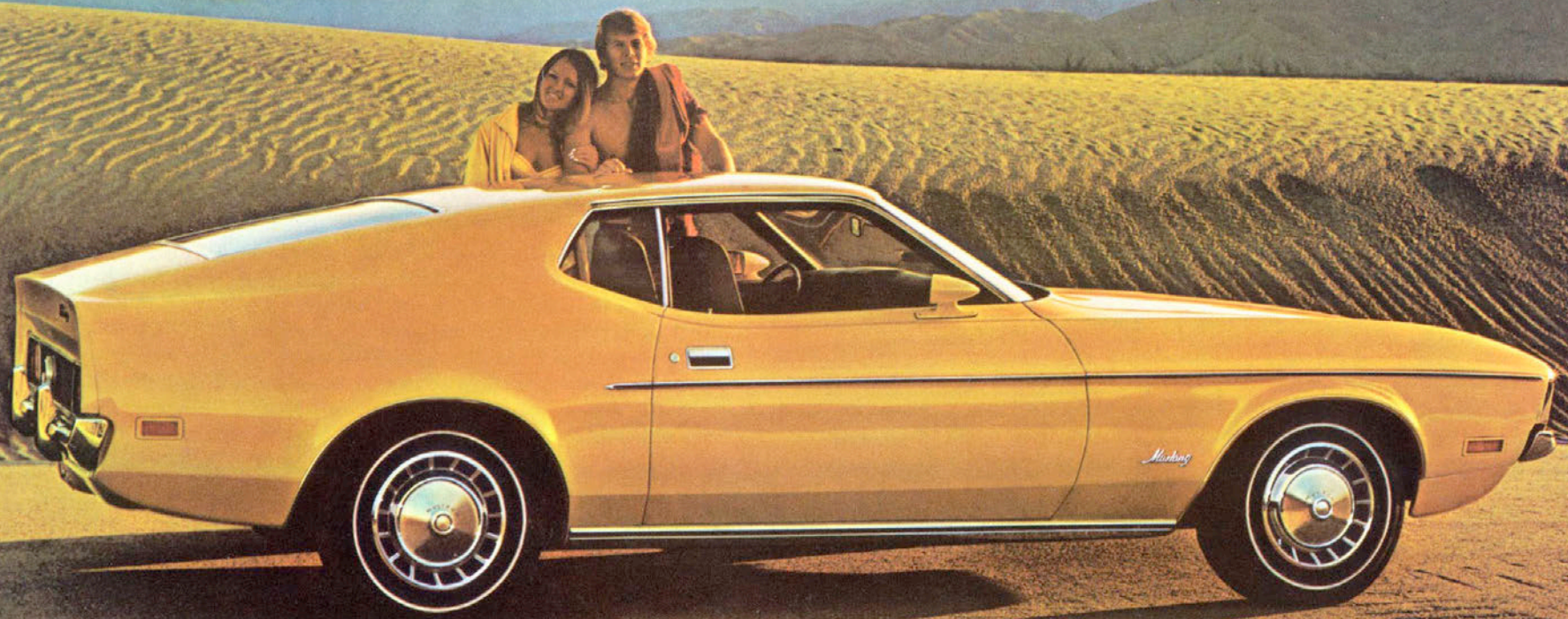
There's a whole host of interior trim choices. The all-vinyl interior shown below is available in six colors. It comes with all Mustangs except the Convertible (knitted vinyl) and Grandé (Lambeth cloth and vinyl). And look at what you get. High Back bucket seats, color-keyed carpeting, mini-console with ash tray, bonded door panels with armrests, deluxe 2-spoke steering wheel with woodtone insert, DirectAire Ventilation, lighter and glove box. The SelectShiftCruise-O-Matic Transmission and Radio are optional.

Mustang, obviously, is a lot of car. Not so obvious is how easily you can own one. Discover this welcome news at your Ford Dealer's.



Mustang Interior in Ginger All-Vinyl Trim





Mustang SportsRoof in Medium Bright Yellow



Mustang Convertible in Bright Lime



Mustang Convertible Interior with White DeLuxe Knitted Vinyl Trim

**MUSTANG SPORTSROOF.** (Top) Meet a new stylish, driving winner. Note the sleek, flat roofline with tinted glass backlite. The low, sleek profile and wide stance contribute to its exceptional roadability and handling ease. Attractive new standards include rocker panel and wheel lip moldings, wheel covers and color-keyed dual racing mirrors. Plus the time-tested power team: the economical 250-cu. in. Six with the smooth-working 3-speed, fully synchronized, floor-mounted manual transmission. SportsRoof deserves your road test. You'll find it a real convincer.

**MUSTANG CONVERTIBLE.** Sun-lovers, rejoice! Mustang Convertible introduces impressive new style. Comfort. With handling you've always wanted. New, standard interior (left) features: High Back Buckets and full-width rear seat in deluxe knitted vinyl trim, molded door panels with integral pull handles/armrests, a racy instrument panel with courtesy lights and black appliques and a deluxe 2-spoke steering wheel with woodtone insert. Add all the other standard Mustang nifties and—Wow! (Also shown are the popular SelectShift, Console and White Sidewall Tire options.)





**MUSTANG HARDTOP.** How's this for a better idea in sporty, personal Hardtops? Top-of-the-line styling accented by rocker panel and wheel lip moldings, wheel covers and color-keyed dual racing mirrors. And it rides as handsomely as it looks. Its rich all-vinyl interior (in Ginger on page 2) with deep-cushioned buckets, has plenty of room for the typical American family, on the go. Test-drive the Hardtop at your Ford Dealer's soon. It's an exciting new member of the Driving Machine stable.

**Mustang Hardtop, SportsRoof, Convertible Standard Feature Highlights:** 250-cu. in. 1V Six • 3-speed, floor-mounted full-sync manual transmission • E78x14 belted, bias-ply black sidewall tires • concealed windshield wipers • rocker panel, wheel lip moldings • lower back panel applique with bright molding • color-keyed dual racing mirrors • recessed exterior door handles • wheel covers • curved, ventless sideglass • fixed rear quarter windows on SportsRoof (except with optional power windows) • tinted glass backlite on SportsRoof • DirectAire Ventilation • heater/defroster • all-vinyl seat trim (Hardtop and SportsRoof only) • High Back Buckets • bonded door trim panels with pull-type handles and armrests (Hardtop and SportsRoof only) • mini-console • color-keyed carpeting • courtesy lights

- deluxe 2-spoke steering wheel with woodtone insert
- lighter • reversible keys, "keyless" locking. Additional Convertible standards: 5-ply power-operated top with easy-fastening latches • color-keyed boot • tinted windshield • glass backlite • bright upper back panel molding • knitted vinyl seat trim • molded door panels with integral pull handles/armrests
- black instrument panel appliques. All models have Twice-A-Year Maintenance • Steel Guard Rails • Uni-Lock Harness • plus FORD MOTOR COMPANY LIFEGUARD DESIGN SAFETY FEATURES.

**Mustang Hardtop, SportsRoof, Convertible Specifications:** Wheel-base—109.0"; Length—189.5"; Width—74.1"; Height—Hardtop 50.8", SportsRoof 50.1", Convertible 50.5"; Track—rear 61.0", front 61.5"; Trunk Space—Hardtop 9.5 cu. ft., SportsRoof 8.3 cu. ft., Convertible 8.1 cu. ft.; Fuel Capacity—approx. 19.5 gal.; Curb Weights—Hardtop 3185 lb., SportsRoof 3155 lb., Convertible 3307 lb.; 250-cu. in. 1V Six—3.68" bore x 3.91" stroke; 7 main bearings; regular fuel.

Mustang Hardtop in White with Ginger All-Vinyl Interior





## New Hardtop and Convertible Decor Group.

You can start designing with this unique, optional exterior trim package. It adds distinctive sportiness to your personal Driving Machine.

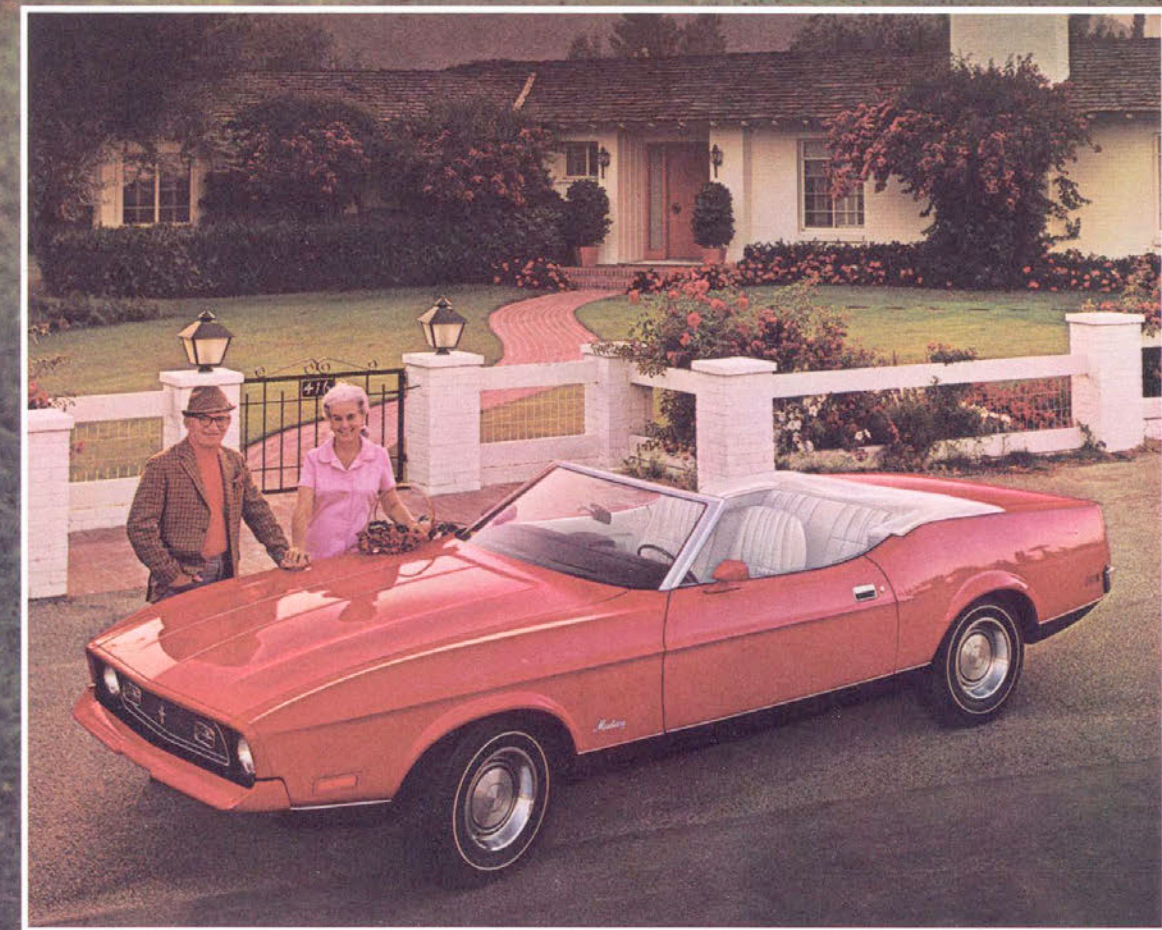
As shown here on both models, it includes a honeycomb black grille with integral sportlamps, a color-keyed front spoiler/bumper, color-keyed hood and fender moldings, black or argent lower bodyside paint with bright chrome molding, and wheel trim rings and hub caps. Also available with the Decor Group are bodyside tape stripes in black or argent. (White sidewalls, shown, are available separately.)

The Decor Group isn't all. There's a whole raft of Mustang options designed to meet your personal needs. Maybe one of the three V-8's suits you. The 302 2V, 351 2V and 351 4V run on regular gas. And they team up beautifully with the SelectShift Cruise-O-Matic Transmission. There's a Dual Ram Induction system for 351 V-8's which includes Dual Functional NASA-Type Hood Scoops, black or argent painted hood, engine CID/Ram Air decals, and twist-type hood locks.

Perhaps you'd like to dress up the Hardtop with a vinyl roof. Or add the Protection Package which helps guard against bumps and scrapes. (Not available on Mach 1.) How about wheel covers? The Sports Wheel Covers are natural for the Convertible. Hardtop and SportsRoof models can add the Rear Window Electric Defrost. And there are features like the Rim-Blow Deluxe 3-Spoke Steering Wheel with woodtone rim, or the five-way adjustable Tilt Steering Wheel, which requires Power Steering.

Power side windows, power front disc brakes, SelectAire Conditioner are other choices. If you get a V-8, keep tab on what it's doing with the Instrumentation Group. And if you get the 351 4V engine, a 4-speed manual transmission with Hurst Shifter® is available. Other options appear on pages 16 and 17.

Unquestionably, Mustang is designed to be designed by you.



Mustang Hardtop in Medium Lime Metallic with Decor Group

Mustang Convertible in Bright Red with Decor Group





Mustang Mach I in Bright Blue Metallic

**MUSTANG MACH I** says Driving Machine emphatically. This sleek-styled SportsRoof stirs up a lot of excitement just cruising down the street. But that's secondary to what you feel as you drive. Straight tracking. Flat cornering. Precise steering. All courtesy of the competition suspension, standard. Mach I's 302-cu. in. 2V V-8 lets you pick a hood with or without NASA-Type Hood Scoops. You get dual racing mirrors, white sidewall Wide Ovals and more. Even the interior has extra flair, as shown on page 2. Assert yourself. Own a Mach I.

**Mustang Mach I Standard Features:** SportsRoof features plus; 302-cu. in. 2V V-8 • E70x14 belted, bias-ply WSW Wide Ovals • competition suspension • choice of hood with or without NASA-Type Hood Scoops (302 V-8 only) • color-keyed front spoiler/bumper • color-keyed hood and fender moldings • honeycomb texture black grille with integral sportlamps • honeycomb back panel applique • black or argent painted lower body, front and rear valance panels • rear tape stripe with Mach I decal • Mach I front fender decals • wheel trim rings and hub caps.

**Mustang Mach I Specifications:** Wheelbase—109.0"; Length—189.5"; Width—74.1"; Height—50.1"; Track—rear 61.0", front 61.5"; Trunk Space—8.3 cu. ft.; Fuel Capacity—approx. 19.5 gal.; Curb Weight—3155 lb.; 302-cu. in. 2V V-8—4.00" bore x 3.00" stroke; regular fuel.



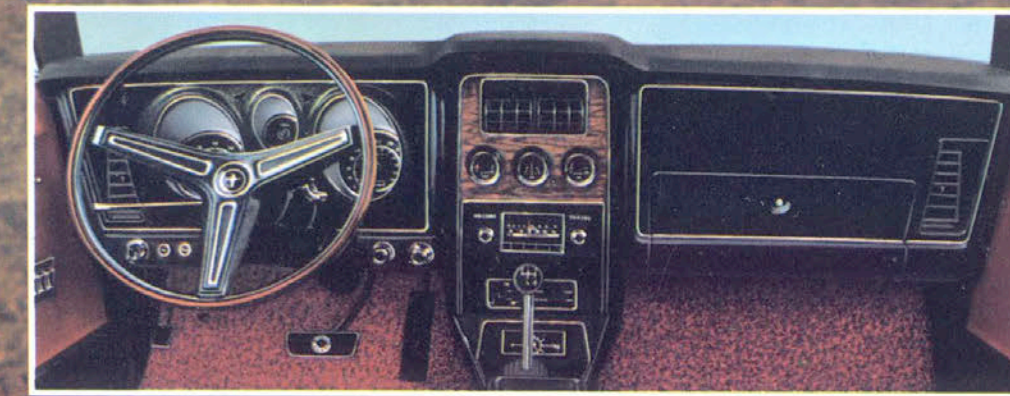


Mustang Mach 1 Sports Interior Option

**Mach I Sports Interior Option.** Do it up with a very sporty touch. This interior is designed exclusively for Mach I and SportsRoof models with any of the three V-8 engine choices. It includes: High Back Bucket Seats with knitted vinyl inserts and accent stripes, molded door trim panels with integral pull handles and armrests, bright floor pedal pads, color accented carpet runners, a deluxe instrument panel with black and woodtone appliques, Instrumentation Group with tachometer, trip odometer and triple pod oil pressure/water temperature/ammeter gauges, and a rear seat ash tray. (Illustration also shows optional SelectShift and Console.)

Another Mach I and SportsRoof exclusive is a zoomy Rear Deck Spoiler. Also, a Sport Deck Rear Seat option which folds down to give you a handy carpeted deck area. It's great for skis. A natural for both, is the Dual Ram Induction package for 351 V-8's. The Rear Window Electric Defrost will really do the job on that racy, tinted glass backlite. For Mach I, the black or argent bodyside tape stripes add an extra dash of sporty flavor. And don't forget the power front disc brake option. Disc brakes, the same concept used on today's jet planes, are designed to give you surer, straighter stops even in a downpour.

Speaking of jet planes, this instrument panel looks almost like a cockpit. It shows the Instrumentation Group (available with any V-8 equipped Mustang), and the black and woodtone appliques. Other better idea options you can see are: power side windows (door-mounted controls), SelectAire Conditioner, SelectShift Cruise-O-Matic Transmission, power front disc brakes, Rim-Blow Deluxe 3-Spoke Steering Wheel with woodtone rim, and the AM/FM Stereo Radio. AM Radio and AM Radio with Stereosonic Tape System are also available. There's a Center Console option, too, with its integral electric clock. The handy stowage compartment doubles as an armrest.



Cockpit-styled Mustang Instrument Panel



Mustang Mach 1 in Bright Red

Mach 1 Sports Interior Option High Back Bucket Seats with Knitted Vinyl Inserts and Accent Stripes

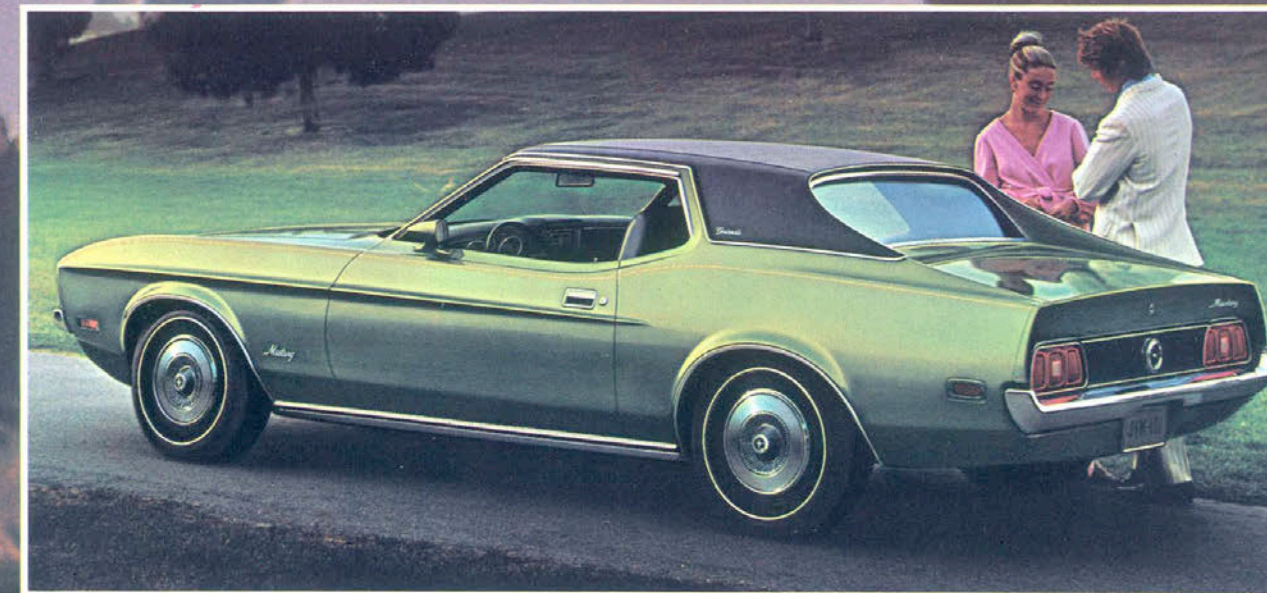




**MUSTANG GRANDÉ.** Stands alone at the head of its class. It offers you the ultimate in the look . . . the feel . . . and the ride in sporty-luxury cars. A rare combination that this Driving Machine provides in depth. The contemporary design of its vinyl roof and tasteful chrome touches are a few of many Grandé distinctions. Its sumptuous interior is available in five Lambeth cloth and vinyl color schemes (see pages 14 & 15). Exterior features like bright rocker panel and wheel lip moldings, unique wheel covers, color-keyed dual racing mirrors, and unique bodyside tape stripes are all standard appointments. (White sidewall tires shown are optional.) Add these features to Mustang quality, quiet comfort and styling . . . and you've got luxurious driving excitement. Mustang Grandé. In a class by itself.

**Mustang Grandé Standard Features:** Hardtop standards like dual racing mirrors, rocker panel/wheel lip moldings plus: vinyl roof with Grandé script • unique bodyside tape stripes • E78x14 black sidewall tires • unique wheel covers • trunk floor mat • Lambeth cloth and vinyl seat trim • molded door panels with integral pull handles/armrests • bright pedal trim • deluxe instrument panel with black camera case/woodtone appliques plus Grandé plaque • panel-mounted electric clock • deluxe 2-spoke steering wheel with woodtone insert • rear ash tray.

**Mustang Grandé Specifications:** Wheelbase—109.0"; Length—189.5"; Width—74.1"; Height—50.8"; Track—rear 61.0", front 61.5"; Trunk Space—9.5 cu. ft.; Fuel Capacity—approx. 19.5 gal.; Curb Weight—3185 lb.; 250-cu. in. 1V Six—3.68" bore x 3.91" stroke; 7 main bearings; regular fuel.



Mustang Grandé showing rear exterior styling



Mustang Grandé in Medium Ivy Bronze Metallic





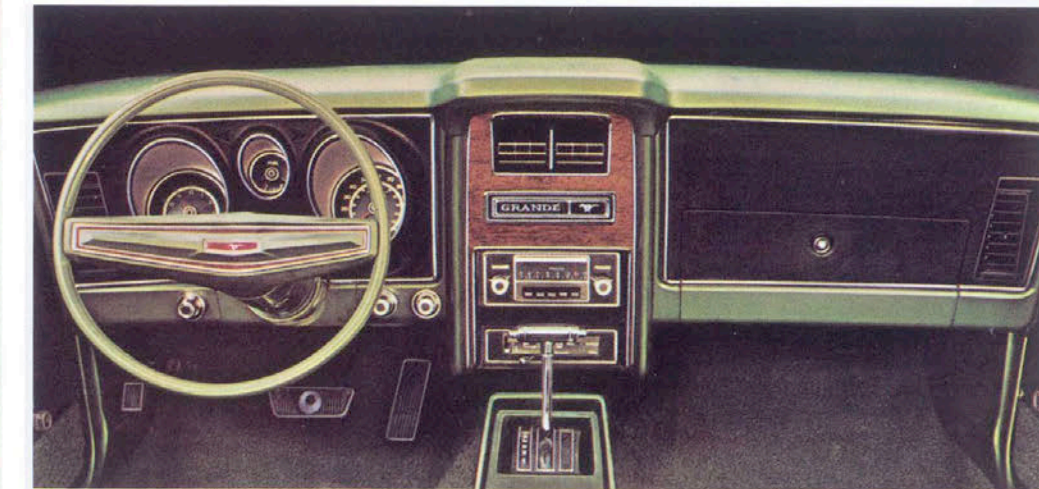
Mustang Grandé Interior featuring Ginger Lambeth Cloth and Vinyl Trim

**MUSTANG GRANDÉ.** Indulge yourself. The luxurious interior is designed to spoil you. You get: High Back Bucket Seats trimmed with Lambeth cloth and vinyl, rear ash tray, molded door trim panels with integral pull handles and armrests (left), a deluxe 2-spoke steering wheel with woodtone insert, mini-console, deluxe instrument panel with black camera case and woodtone appliques, bright pedal trim, and a panel-mounted electric clock (below). See page 12 for a list of standard Grandé features.

Further indulgence is only natural in a Driving Machine as personal as Grandé. The center console option features a convenient armrest stowage compartment. It goes beautifully with the optional SelectShift Cruise-O-Matic Transmission (shown at left and below). Other better idea options include: power side windows with door-mounted controls (also featured at left). The Convenience Group, which gives you a headlamp reminder buzzer, glove box lock, automatic seat back release, courtesy lights, parking brake reminder light, as well as trunk, map, glove box and underhood lights. And SelectAire Conditioner, the ultimate spoiler, which lets you control the climate inside. If you order power steering, you can also get the five-way adjustable Tilt Steering Wheel.

Mustang Designer Kits (pages 16 and 17) suggest more you can do with Grandé. (Example: optional AM Radio, power front disc brakes and white sidewall tires shown below.) However you personalize, you'll experience the same excitement built into all 1972 Mustangs. They're all Driving Machines from Ford. Waiting to be designed by you. See them at your Ford Dealer's.

**Mustang Grandé Instrument Panel with Personalized Designer Options**



Mustang Grandé in Light Pewter with Black Vinyl Roof



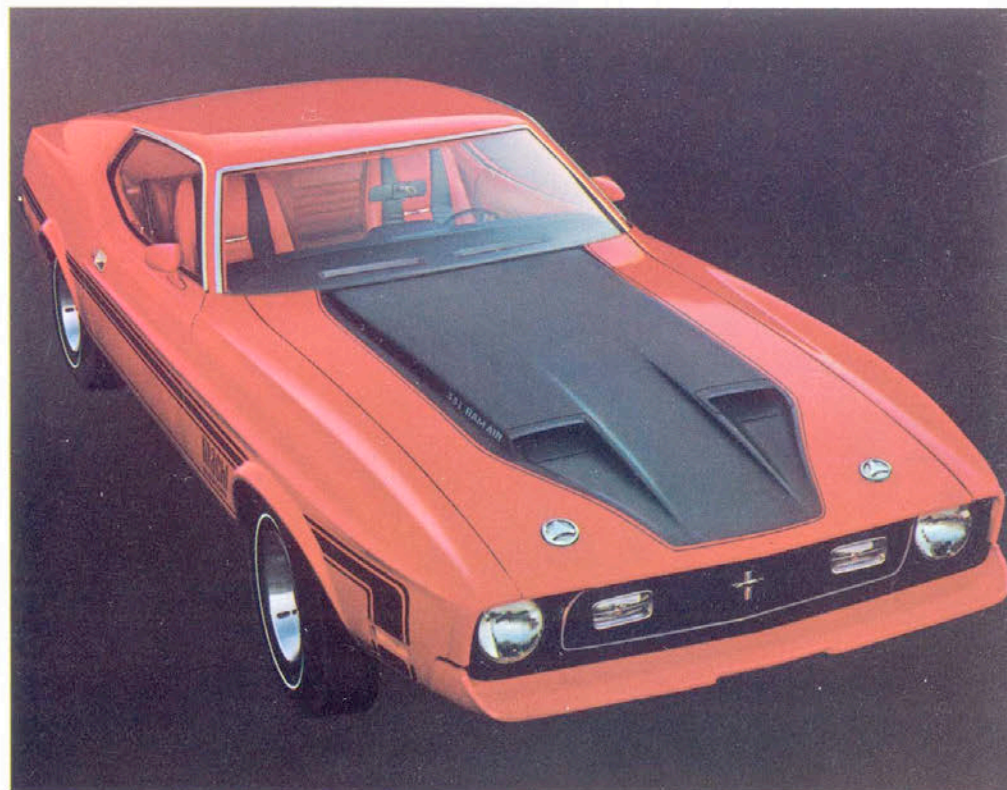
## MUSTANG OPTIONS. YOUR DESIGNER KITS

Add your own special blend of luxury, convenience, performance, styling, with these better idea options. Your Mustang is designed to be designed by you.

**Optional engines**—all spirited V-8's. Select the eager 302 or 351 CID 2V's, or the new 351 4V. See back cover for engine/transmission specifications.



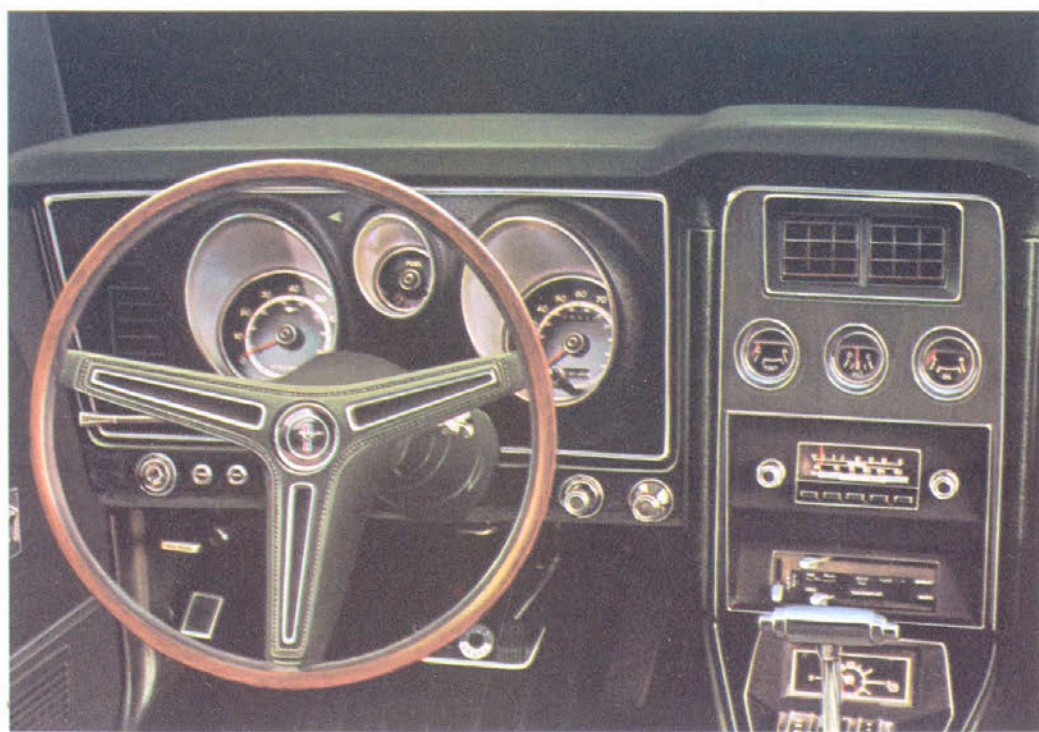
**351-2V 302-2V 351-4V**



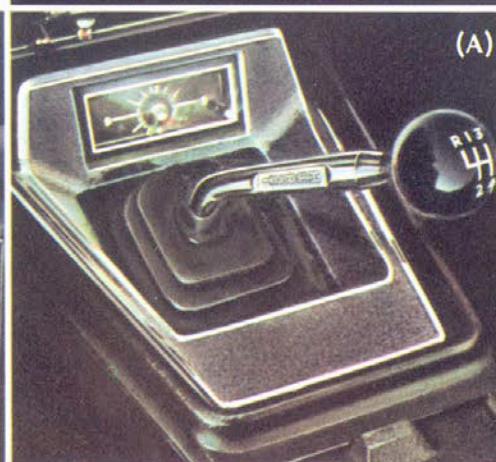
**Dual Ram Induction** system for 351 V-8's. Package includes Dual Functional NASA-Type Hood Scoops that ram outside air into carburetor, black or argent painted hood, engine CID/Ram Air decals, twist-type hood locks.

**Bodyside Tape Stripes** in black or argent are available on Mach I (left) and on hardtops and convertibles with the Decor Group. They provide added emphasis to Mustang's sporty lines.

**Vinyl Roof** adds luxurious styling to the Hardtop and is available in black, white, blue, green, or brown. It is standard on Grandé.



**Rim-Blow 3-Spoke Steering Wheel** lets you use horn without moving your hands from its woodtomed wheel rim. **Power Steering** gives you precise, immediate response for whatever the situation. It includes Vari-Ratio Steering on Mach I and models with optional competition suspension. The **Instrumentation Group** tells you what your V-8 is doing. It includes tachometer, trip odometer and oil pressure/ammeter/water temperature triple instrument pod. **Power Windows** with individual and master door-mounted controls, give you fingertip command of all side windows. **Center Floor Console** has integral electric clock and hinged armrest stowage compartment. It's perfectly suited for the **SelectShift Cruise-O-Matic Transmission** which lets you shift manually or automatically as you prefer. **AM/FM Stereo Radio** has two front speakers for proper stereo effect. Also available: **AM Radio** or **AM Radio with Stereosonic Tape System**. **SelectAire Conditioner** warms, cools, ventilates, defrosts. Tinted glass recommended. (Not available with 250 CID/3-speed manual combination.)



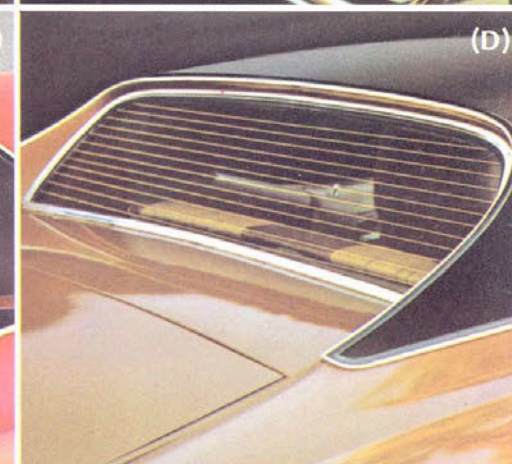
(A) **4-Speed Manual Transmission with Hurst Shifter**® and linkage for fully synchronized sport shifting. It's available with the 351 4V engine.



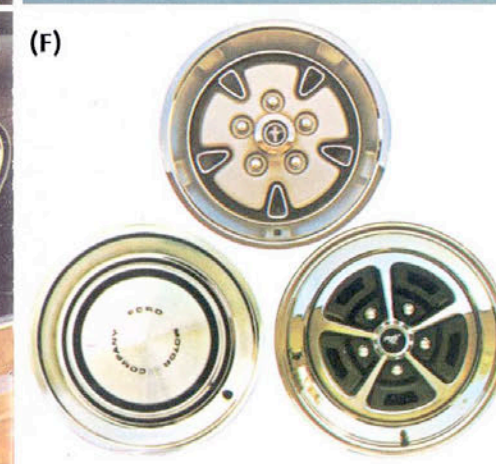
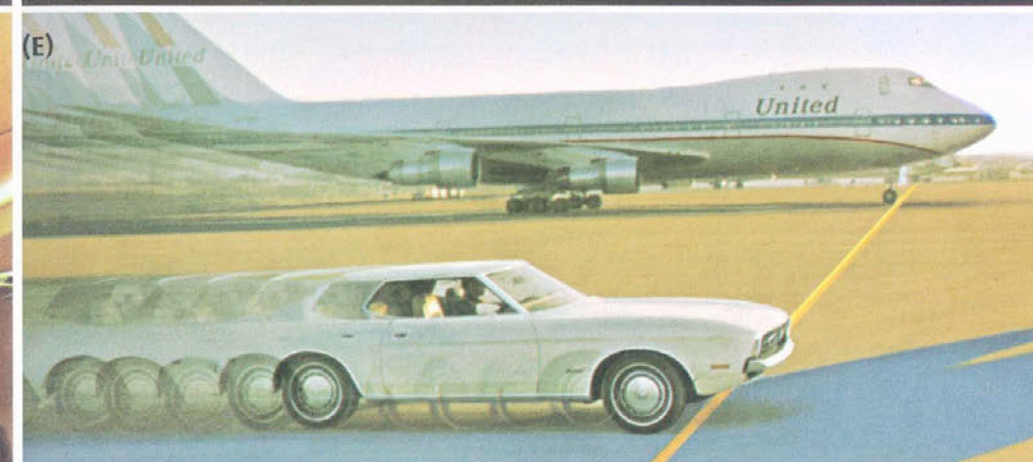
(B) **Sport Deck Rear Seat** for Mach I and SportsRoof models includes rear seat that folds flat to form a carpeted deck and interior access to trunk. It's great for long or bulky items. Like skis as shown above.



(C) **Protection Package** guards your road machine against those hard-to-explain bumps and scrapes. It includes front and rear bumper guards and color-keyed vinyl insert bodyside molding.



(D) **Rear Window Electric Defrost** consists of thin conductive strips in the backlite which warm to help improve rear visibility. Available on Hardtop and SportsRoof.



(E) **Power Front Disc Brakes**, the same concept that stops the big jets, give you straighter, surer stops even in the rain.

(F) Optional wheel covers include: **Sports Wheel Covers**—for extra racy flair. **Wheel Trim Rings/Hub Caps**—for that smooth, flashing performance look. And **Magnum 500 Chrome Wheels**—for the ultimate in "Mag"-type wheels.

**OTHER OPTIONS: Convenience Group** includes automatic seat back release, glove box lock, parking brake reminder light, headlamp reminder buzzer, courtesy lights under instrument panel (standard on Convertible), plus trunk, map, glove box, underhood lights • **Decor Group** (pages 6-7) • **Mach I Sports Interior** (pages 10-11) • **Color Glow Paint** (Ivy or Gold) • **Front and Rear Bumper Guards** • **Door Edge Guards** • **Tinted Glass** • **Intermittent Windshield Wipers** • **Rear Deck Spoiler** (SportsRoof, Mach I) • **Color-keyed vinyl Front Floor Mats** with carpet inserts • **Adjustable five-way Tilt Steering Wheel** • **Deluxe Seat Belts** and reminder light • **Heavy-Duty Battery** • **Extra Cooling Package** • **Competition Suspension** • **Traction-Lok Differential** • **Optional Axle Ratio** • **Optional Tires** (all belted, bias-ply Wide Ovals) include: E70x14 WSW (standard on Mach I), F70x14 WSW, F70x14 BSW with raised white letters, F60x15 BSW with raised white letters.

## SAFETY FEATURES



Ford, the industry's safety pioneer, wants to make cars as strong and safe as possible. To protect you. The results of this dedication are reflected in the following list of **Ford Motor Company Lifeguard Design Safety Features**. They are standard on all 1972 Mustangs.

(A) **Uni-Lock Safety Harness**—easy-to-use, three point lap/shoulder restraint system for front outboard occupants (except Convertible). Rear seating positions feature lap belts. Front lap belts equipped with retractors.

(B) **Locking Steering Column**—anti-theft system automatically locks transmission, steering mechanism and ignition when key is removed. If key is left in, warning buzzer will sound when door is opened.

(C) **Safety-Designed Interior Door Handles**—positioned under and flush with armrest. And they're pull-type for fast, easy opening.

(D) **Steel Guard Rail Side Impact Protection**—consists of steel box-section door beams which help absorb side impact forces.

(E) **Energy-Absorbing Steering Column and Wheel**—provides controlled, collapsing action of steering column to absorb sudden impact energy. Steering wheel has energy-absorbing rim, spokes and hub.

(F) **Side Marker Lights**—help alert other drivers to your car's presence.

**Plus:** Dual hydraulic brake system with pressure loss warning light • Padded, energy-absorbing instrument panel • Glare-reduced instrument panel padding, windshield wiper arms, steering wheel hub, rearview mirror/mirror mounting and windshield pillars • Energy-absorbing armrests and safety-designed door handles • Dual master cylinder brake system • Turn indicators with lane-changing signal feature • Inside yield away rearview mirror • Padded sun visors • Two-speed windshield wipers • High strength laminate safety glass windshield • Double-yoke safety door latches and safety hinges • Hazard warning flasher • Backup lights • Energy-absorbing front seat back tops with padding • Self-locking front seat backs • Safety-designed coat hooks (except Convertible) • Safety-designed radio control knobs and push buttons (on models equipped with radios) • Dual outside rearview mirrors • Safety rim wheels and load-rated tires • Corrosion-resistant brake lines • Uniform transmission shift quadrant (on models equipped with SelectShift) • Parking lamps coupled with headlamps • Non-reversing odometer • Safety design front end structure • High Back seats • Safety glove box latch.

Take full advantage of the built-in protection your Mustang can provide. Always buckle up. Obey traffic laws. And exercise good driving judgment at all times.

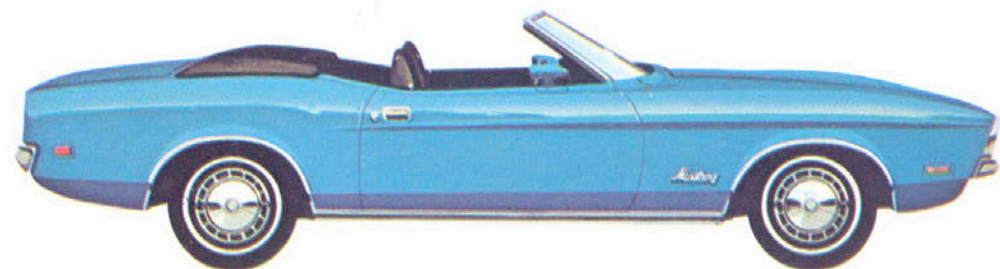




Mustang Hardtop



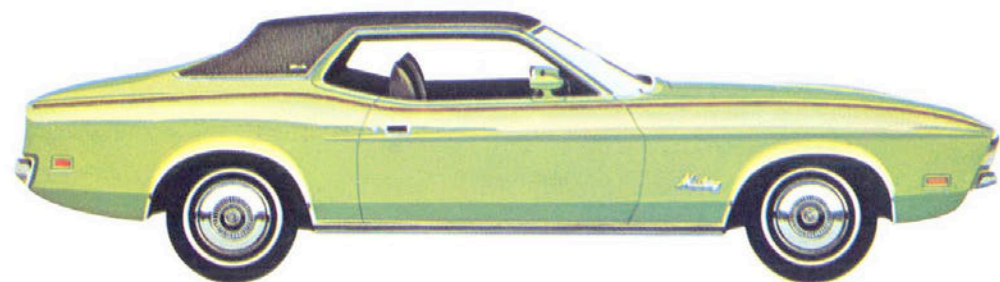
Mustang SportsRoof



Mustang Convertible



Mustang Mach I



Mustang Grandé

**MUSTANG**   
 Ford gives you Better Ideas.

## MUSTANG SPECIFICATIONS

**Color and Trim:** 16 Super Diamond Lustre Enamel exterior finishes (12 on Mach I and with Decor Group); 6 standard all-vinyl interior colors; 6 knitted vinyl colors in Convertible and in Mach I Sports Interior Option; 5 cloth and vinyl trims in Grandé; 5 vinyl roof colors. Check your local Ford Dealer for full details on color and trim availability.

### ENGINES\*

**250 CID 1V Six**—3.68" bore x 3.91" stroke; 7 main bearings; regular fuel.†

**302 CID 2V V-8**—4.00" bore x 3.00" stroke; regular fuel.†

**351 CID 2V V-8**—4.00" bore x 3.50" stroke; regular fuel.†

**351 CID 4V V-8**—4.00" bore x 3.50" stroke; regular fuel.†

\*It is estimated that with all controls on the 1972 Mustang, more than 85% of hydrocarbon emissions and nearly 70% of carbon monoxide emissions are eliminated.

†All 1972 Mustang engines are designed to operate on regular gasoline with octane rating of at least 91 when the engine is adjusted to factory recommended specifications.

ENGINES	TRANSMISSIONS		
	3-Speed Floor-Mounted Manual	SelectShift	4-Speed Floor-Mounted Manual
250 1V Six	X	X	
302 2V V-8	X‡	X	
351 2V V-8	X‡	X	
351 4V V-8		X	X

NOTE: Availability of engines and transmissions is contingent upon Federal Emission Certification and production schedules.

‡Not available in California.

**Engine Features:** 6000-mile (or 6-month) maintenance schedule with full-flow disposable type oil filter; dry element air cleaner; automatic choke; self-adjusting valves with hydraulic lifters; 12-volt electrical system; 38-amp. alternator with 250 Six, 302 and 351 2V V-8's (42-amp. with 302 and 351 2V V-8's on Mach I), 55 amp. with 351 4V V-8; 45 amp-hr battery with 250 Six and 302 & 351 2V V-8's, 55 amp-hr with 351 4V V-8.

MODEL	STANDARD ENGINES	OPTIONAL V-8's
Hardtop, SportsRoof, Grandé, Convertible	250 1V Six	302 2V 351 2V 351 4V
Mach I	302 2V V-8	351 2V 351 4V

**Rear Axle:** semi-floating hypoid type; permanently lubricated rear wheel bearings.

**Front Suspension:** angle-poised ball-joint type with coil springs; strut-stabilized lower arms; link-type stabilizer.

**Rear Suspensions:** asymmetrical variable-rate design longitudinal 4-leaf springs. (Diagonally mounted shocks for 351 4V V-8 only.)

**Steering:** recirculating ball-type, permanently lubricated. 30.2 to 1 overall ratio (22.1 to 1 power). Turning diameter 39.8 feet.

**Brakes:** dual hydraulic system with dual master cylinder. Self-adjusting, self-energizing design. Lining areas: 163.6 sq. in. (250 Six, 302 V-8); 173.3 sq. in. (351 V-8's).

NOTE: Your 1972 Mustang comes with factory-engineered Autolite/Motorcraft battery, oil filter, shock absorbers; Autolite spark plugs and other Ford approved precision parts. For continued top performance, be sure to specify Autolite spark plugs and Autolite/Motorcraft parts whenever replacement is necessary.

NOTE: Information shown was correct when approved for printing. Ford Division reserves the right to discontinue, or change at any time, its product specifications or design without incurring obligations. Some items illustrated or described are optional at extra cost. Many options are offered on all models. Some are required in combination with other options. Always consult your Ford Dealer for complete details.