

F O R D 1 9 9 2

# Probe



WHAT YOU SEE  
TELLS YOU ALL YOU  
NEED TO KNOW.  
PROBE PERFORMS  
AS DYNAMICALLY  
AS IT LOOKS.

On occasion you come across one of those rare performance cars that need few words of introduction.

The message that comes across in the visual language is striking, immediate, and clear. And it says, all at once: Quality. Precision. Balance. Performance.

That the front-wheel-drive Ford Probe is one of the market's most aerodynamic production cars is a fact expressed dramatically in

the sleek shape of the body shell. A shape whose visual appeal is matched by its strong functional purpose.

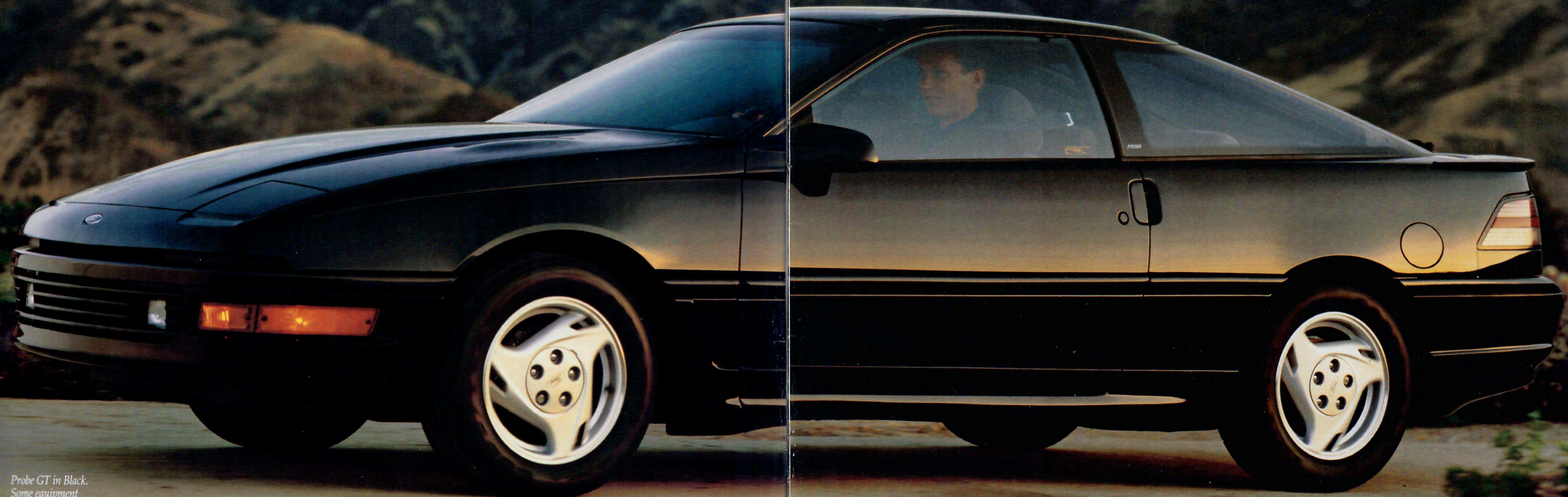
Probe is a product of our design philosophy that says: How a car's design works is every bit as important as how it looks. Style and function work in harmony.

And when the excellence of a car's design closely complements the precision of its engineering, you are in for a rewarding experience.

Ford Probe is a car you'll be proud to own, not only because it looks so good but, even more importantly, because it performs so well.

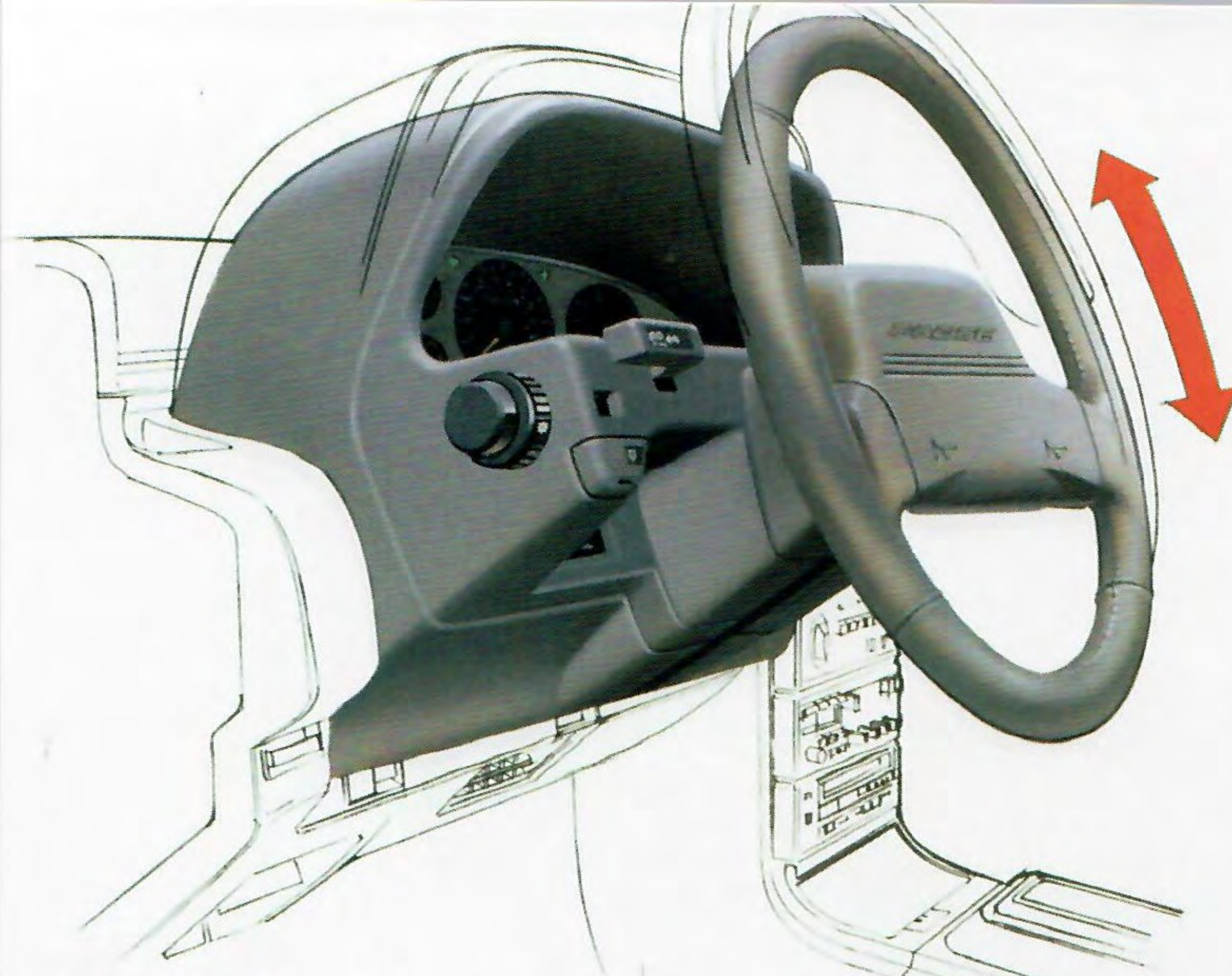
Performance. Here's where Probe says it all best: on the road, where action speaks more powerfully than words.

Enjoy the Probe driving experience in one of three models: The responsive Probe GL. The V-6-powered Probe LX. Or the exciting turbocharged Probe GT.



*Probe GT in Black.  
Some equipment  
shown is optional.*

NOT MANY CARS  
HAVE THE SPIRIT  
TO MOVE YOU  
LIKE THIS ONE.  
THE EXCITING  
TURBOCHARGED  
FORD PROBE GT.



The tilting steering wheel and instrument cluster is included in Preferred Equipment Package 261A. It tilts as a unit, providing an unobstructed view of the cluster regardless of the angle of the steering wheel.

The mere thought of putting a sports car to the test of your driving skill has the power to create vivid images of the greatest rewards driving can offer.

The Probe GT, one of the world's best front-wheel drive high-performance cars, possesses that unique sports car ability to satisfy every expectation for a thoroughly rewarding experience behind the wheel.

**Expectation #1: Power.** And there's plenty of it: 145 hp (SAE rating) and 190 lbs./ft. of torque produced by a 2.2L 12-valve turbocharged and intercooled I-4 engine. Standard transaxle is a 5-speed manual with close-ratio gearing; an electronic 4-speed automatic is available.

Superb aerodynamics — a low .312 Cd — helps the 2.2L turbo use more of its power to generate performance and less to overcome the inhibiting force of drag.

**Expectation #2: Handling.** The Probe GT suspension is a 4-wheel independent system equipped with special sport-tuned handling components: higher-rate coil springs, nitrogen gas-purged struts, and larger-diameter stabilizer bars.

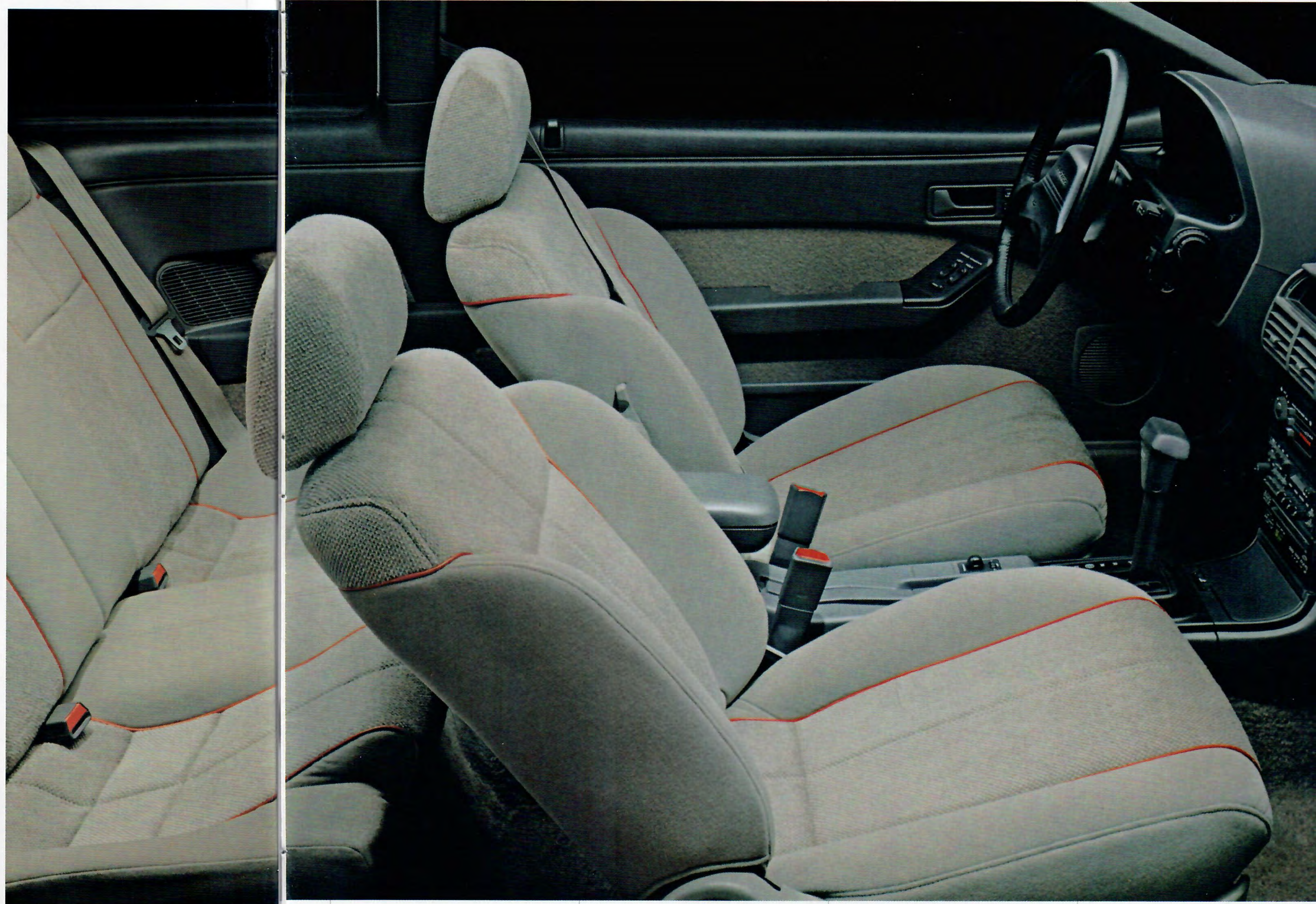
The suspension's tight handling combines with speed-rated P205/60VR15 performance radials to give GT great agility.

**Expectation #3: Control.** The variable power-assist speed-sensitive steering system, controlled by computer, increases power assist during low-speed maneuvers such as parking for an easy, fluid feel of the wheel; and decreases power assist as speed increases for a progressively firmer feel.

And GT is equipped with 4-wheel power disc brakes, to which you can add the optional anti-lock system for world-class stopping action.



A turbo boost gauge is added to Probe's standard package of analog gauges. Also a GT feature is a low oil level warning light.



The Probe GT features ergonomic instrumentation. Plus the precision of a computer-controlled, variable power-assist speed-sensitive steering system.

Probe GT interior in Titanium.

Some equipment shown on these pages is optional.

THE PROBE LX.  
IT'S POWERED BY  
A FUEL-INJECTED  
3.0L V-6. AND  
YOUR DRIVING  
ENTHUSIASM.

The Probe LX's ability to make driving a rewarding experience is bred right into its design and engineering.

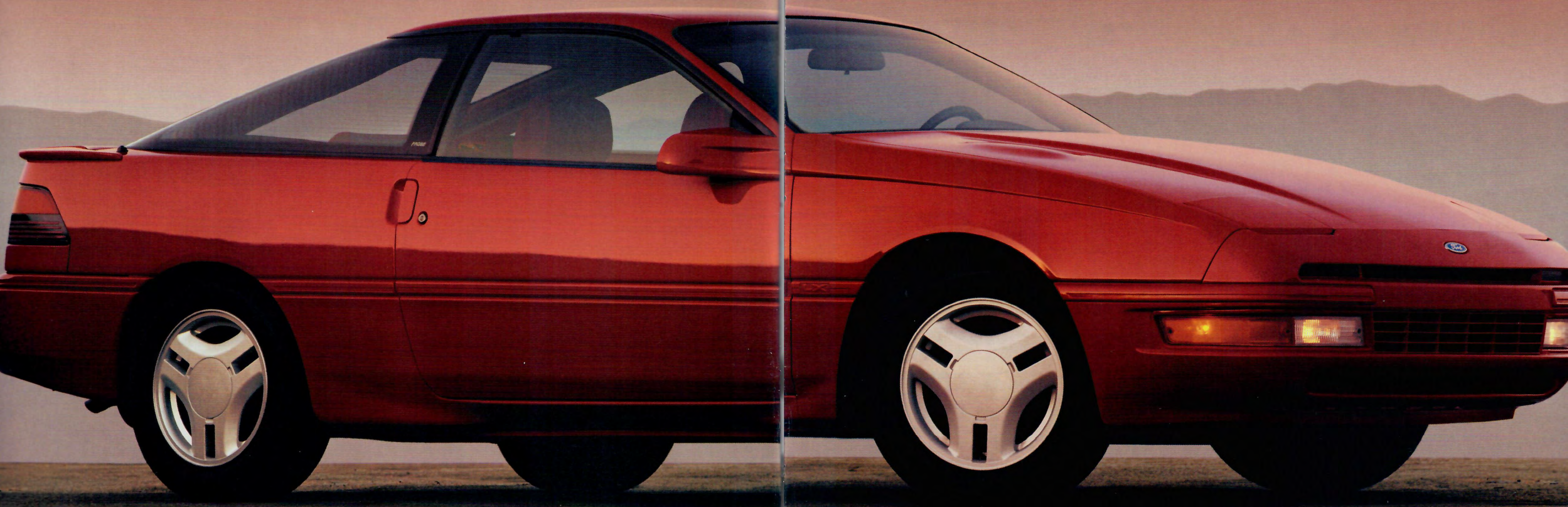
Probe LX is powered by a responsive 3.0L V-6 engine equipped with a state-of-the-art multi-port electronic fuel injection system. The Ford EEC-IV computer that controls it also governs many other functions, constantly fine-tuning the engine to the requirements of the moment. The 145 hp (SAE rating) and

165 lbs./ft. of torque reach the pavement by way of a 5-speed manual transaxle, whose close-ratio gearing enables you to get the most out of this power throughout the full performance range.

You also have the optional electronic 4-speed automatic transaxle, which includes a Manual Shift mode for selective shifting in first, second and third gears. Much of the fun and flexibility of a manual, but without the clutch.

That this is a real driver's car is evident also in the way it handles the road, as well as in the way it puts you in command with ergonomic instrumentation and multi-adjustable seating.

But as any true driving enthusiast will tell you, it takes more than just a car's engineering to bring out its full performance potential. What's behind the wheel is every bit as important. You. And your love for driving.



*Probe LX in Rio Red Tinted  
Clearcoat Metallic. Some  
equipment shown is optional.*

THIS IS THE WAY  
A "LUXURY-SPORT"  
CAR SHOULD BE  
ENGINEERED  
AND EQUIPPED.

Probe LX delivers responsive V-6 performance. And the MacPherson 4-wheel independent suspension delivers responsive handling to go with it.

And Probe LX, like the high-performance Probe GT, can be equipped with the computer-controlled 4-wheel anti-lock brake system.

Probe LX's driver-biased attitude can be seen and felt as well in the ergonomic and well-appointed interior. The reclining driver's seat, for example, provides adjustment for height, tilt, lumbar support and side bolsters. The instrument pod has easy-to-read gauges, a



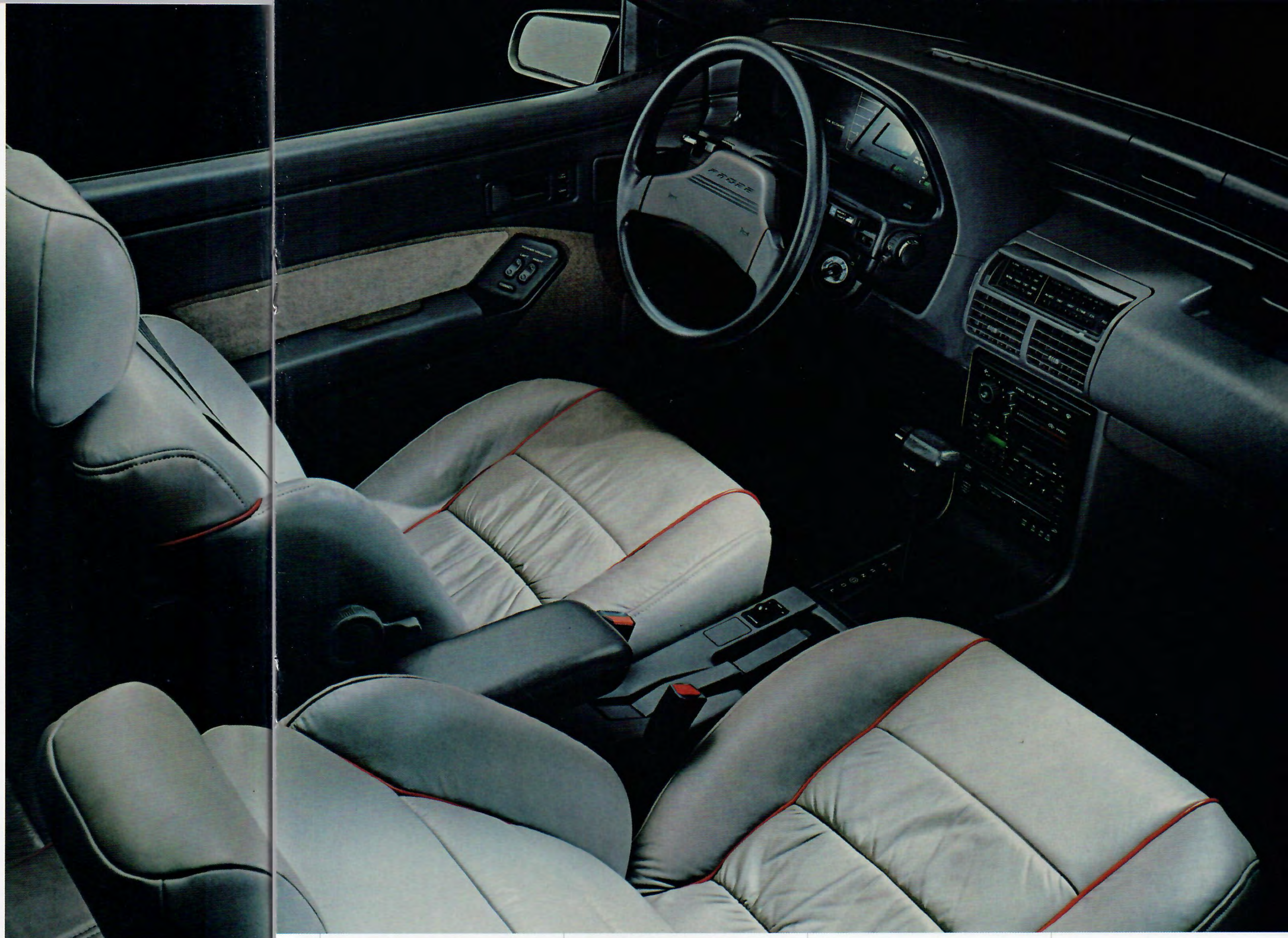
Optional power window and door lock controls are located on a door-mounted panel for maximum convenience.

tachometer included, plus control levers and rotary knobs that are easy to reach and operate.

Among the many features in the Preferred Equipment Package 253A are the Sport Option (rear spoiler plus aluminum wheels with P205/60HR15 tires); rear window defroster; the tilting steering column and cluster (shown on page 4); electronic AM/FM stereo with cassette player, premium sound system and power antenna; and the comfort of air conditioning.



Probe LX in Deep Titanium Clearcoat Metallic equipped with the Sport Option: rear deck spoiler and P205/60HR15 radials on aluminum wheels.



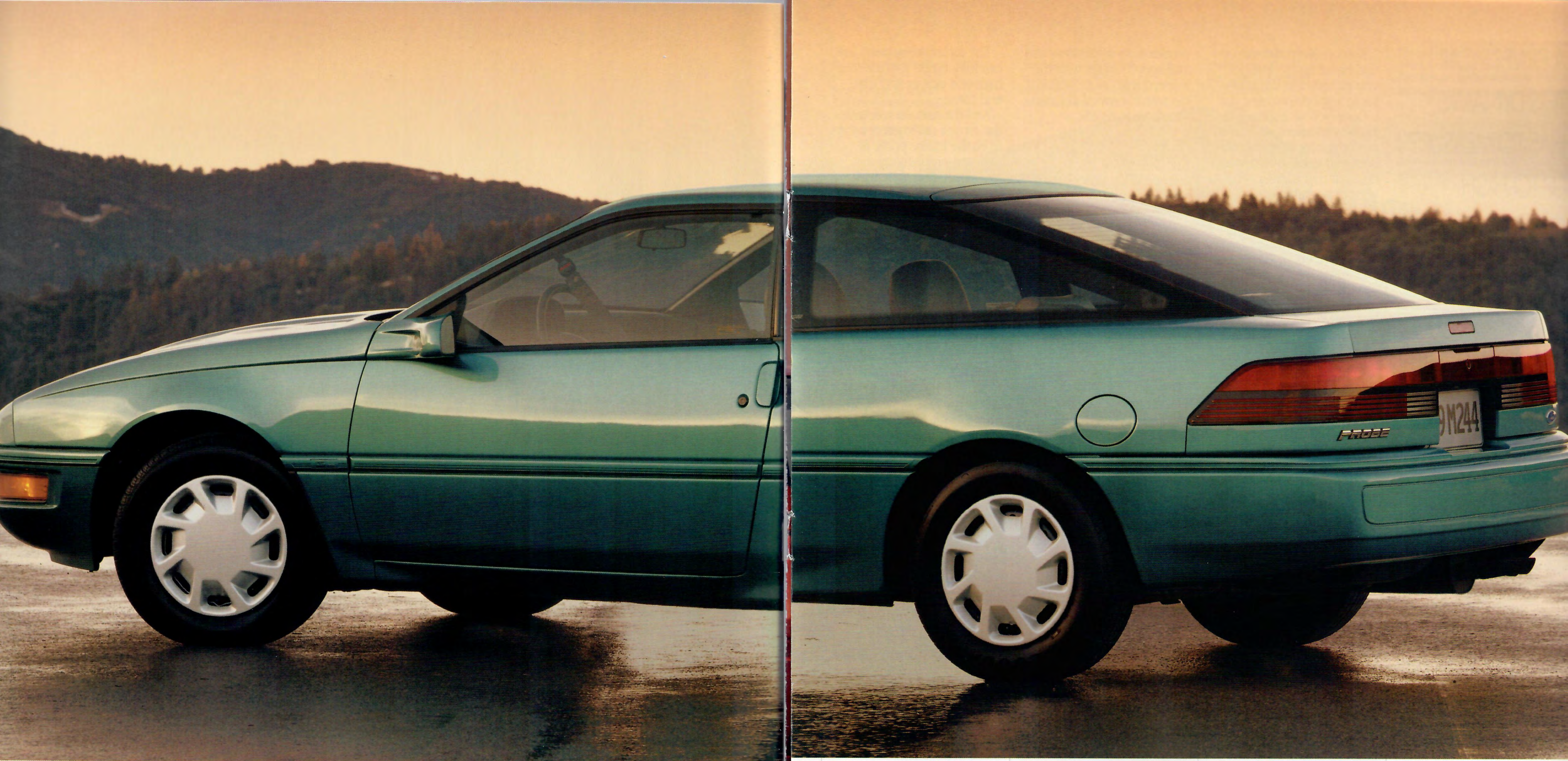
Electronically controlled, the optional 4-speed automatic transaxle is smooth and precise. The flexible Manual Shift mode permits selective shifting in first, second and third gears.



Dual illuminated visor vanity mirrors are among the many features included in the Probe LX Preferred Equipment Package 253A.

The Probe LX interior in Titanium. Some equipment shown, such as the electronic instrument cluster, is optional.

The electronic instrument cluster (features are detailed on page 15) is a sophisticated information center providing precise digital and analog readouts of basic engine operating conditions, as well as engine speed and mileage data. Also included are the items in the optional vehicle maintenance monitor, also covered on page 15, plus the "speed alert" feature.



UNTIL YOU LOOKED  
INTO A PROBE GL,  
YOU THOUGHT  
YOU'D HAVE TO  
SETTLE FOR LESS.

The Probe GL nameplate, with the advanced design and engineering it represents, is just a few years old. Its tradition of value, however, goes back many more years.

You need only think of the legendary Mustang to get a sense of how serious we have long been about putting cars of sport styling and performance within reach of practically anyone to enjoy.

Driving performance is a trait indelibly imprinted on the blueprint of GL's design.

With 3-valves per cylinder and multi-port fuel injection, the 2.2L I-4 has responsive power and torque. The four-wheel independent suspension delivers balanced ride quality and flat handling.

And its .308 Cd ranks Probe among the market's most aerodynamic production cars.

Reclining front bucket seats, full analog gauges with tach, electronic AM/FM stereo, split 50/50 rear seats, and many other features come standard.

And in Preferred Equipment Package 251A are options offered at a savings over the prices of the individual items.

The Probe GL. Designed, engineered and equipped to put sport driving enjoyment within your reach.



*Above: Probe GL in Calypso Green Clearcoat Metallic.*

*At left: The 50/50 rear seat backs fold down separately for added luggage/cargo space either with or without a third passenger. Cargo volume with the seat backs up is 19.8 cu. ft. (19.1 in LX and GT). With both seat backs lowered, space increases to 41.9 cu. ft. (40.9 in LX and GT).*

*Some equipment shown on these pages is optional.*

A DRIVER'S CAR  
THIS DYNAMIC  
HAS TO MEASURE  
UP TO HIGH  
STANDARDS OF  
PERFORMANCE.

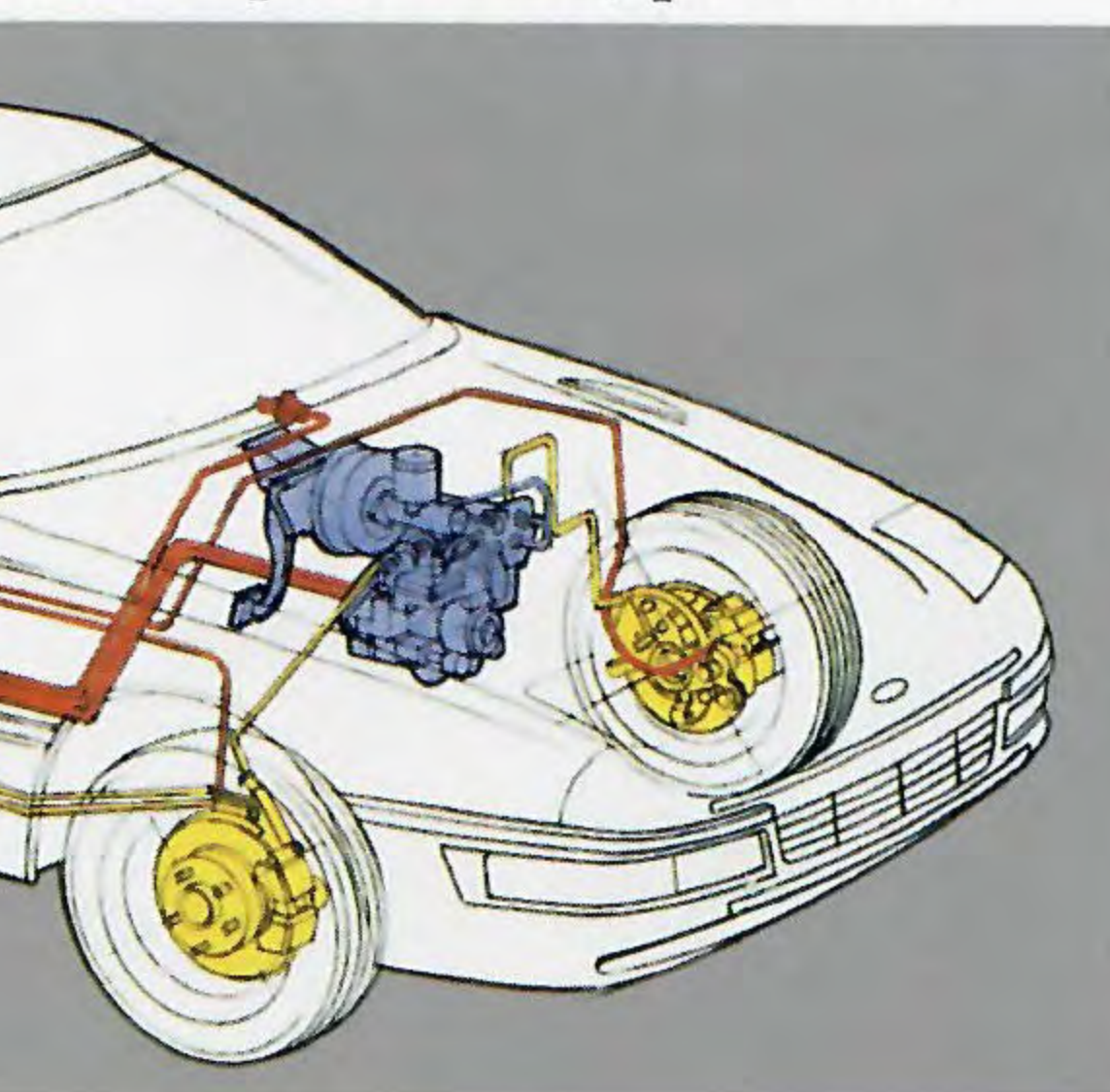
Responsive performance and handling are features you expect, and rightfully so, in a sports-oriented car.

Once you've experienced Probe's excellent all-around performance, we are confident that you'll find this to be a car that measures up to your expectations.

**PROBE GL:  
2.2L EFI I-4**

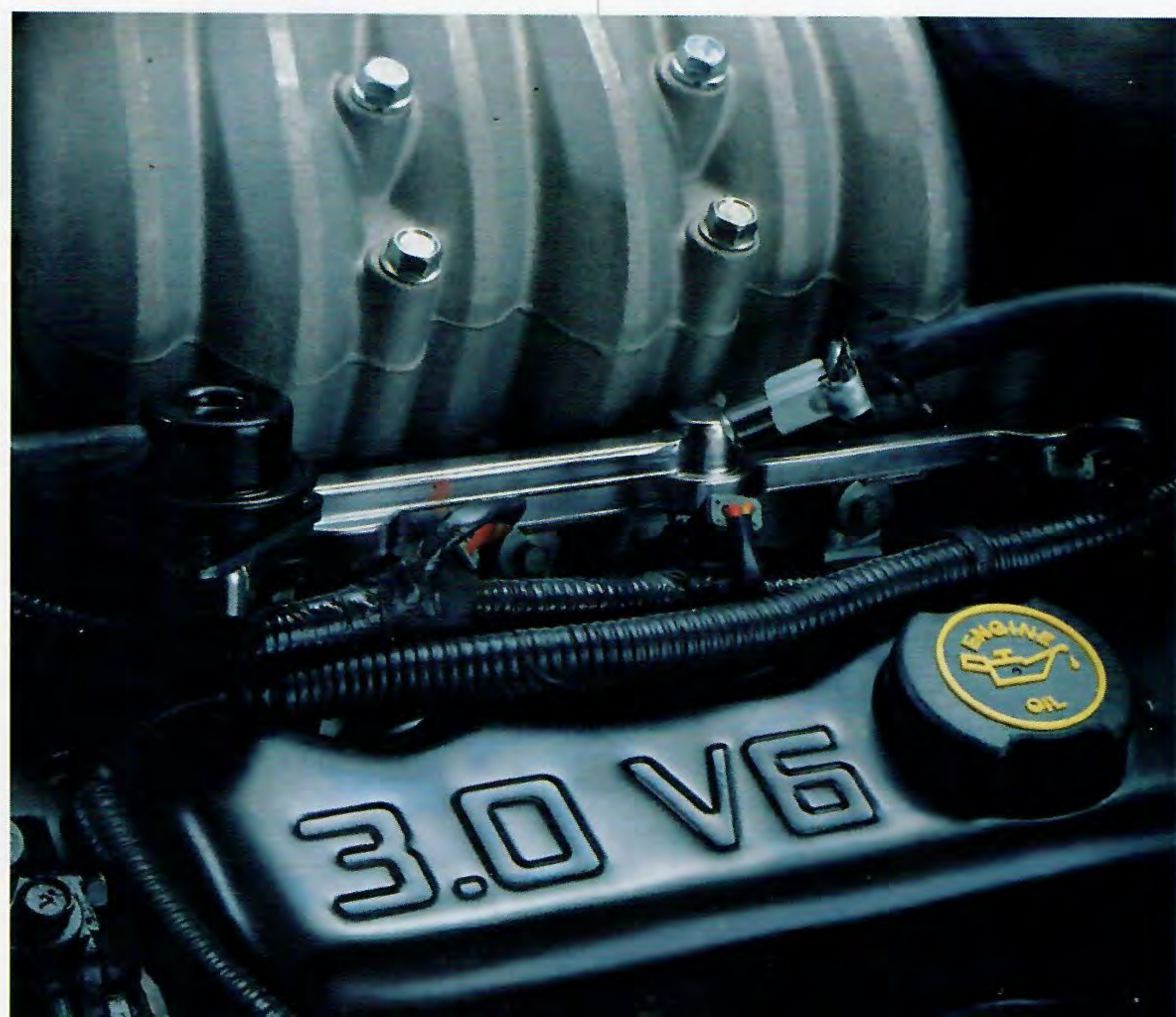
The 2.2L engine in Probe GL uses three valves per cylinder, two for intake and one for exhaust, to promote high combustion efficiency and increase power output.

The multi-port electronic fuel-injection (EFI) system, governed by an 8-bit digital microprocessor, provides



precise fuel metering and smooth running.

The 2.2L is a long-stroke powerplant that generates 130 lbs./ft. of torque @ 3,000 rpm, delivering responsive



acceleration in the low- and mid-speed ranges with the 5-speed manual or optional electronic 4-speed automatic overdrive transaxle.

**PROBE GT:  
2.2L EFI TURBO I-4**

Probe GT's turbocharger with air-to-air intercooler elevates the power of the 2.2L EFI 12-valve I-4 from respectable to impressive.

The 2.2L Turbo has a high ratio of power to displacement — 145 hp @ 4,300 rpm (SAE rating) for 133 cubic inches — more than one horsepower per cubic inch.

And its 167 lbs./ft. of torque @ 2,000 rpm increase to 190 lbs./ft. @ 3,500 rpm.

So Probe GT has all the power to deliver plenty of driving excitement through the entire performance range, whether you're accelerating from a standing start or passing at highway speeds.

**PROBE LX:  
3.0L EFI V-6**

The smooth, powerful 3.0L V-6 generates nearly 80 percent of its 165 lbs./ft. of torque at only 1,000 rpm.

The patented combustion chamber design with center-mounted spark plugs produces a clean, rapid burn of the fuel-air mixture.

The air intake runners are carefully tuned for balanced high-end power and low-end torque.

And the fuel, mixed with the air just millimeters away from the intake ports, is metered precisely by a multi-port electronic fuel-injection system.

The fuel-air mixture and ignition timing are among the many functions controlled by Ford's EEC-IV computer, which constantly "fine-tunes" the engine to the performance requirements of the moment.

**PROBE HANDLING**

There's more, of course, to the Probe driving experience than responsive power and torque. Equally satisfying is the performance of the MacPherson strut 4-wheel independent suspension.

The stabilizer bars, strut valving, spring rates and suspension bushings are tuned for an excellent balance of smooth ride quality and flat handling.

Now add the higher-rated components of the Probe GT's sport suspension system, and the result is an already highly capable handling package raised to even greater heights of high-performance driving enjoyment.

*The 3.0L V-6, standard in the Probe LX, features 12-in. tuned air intake runners and computer-controlled, multi-port electronic fuel injection.*

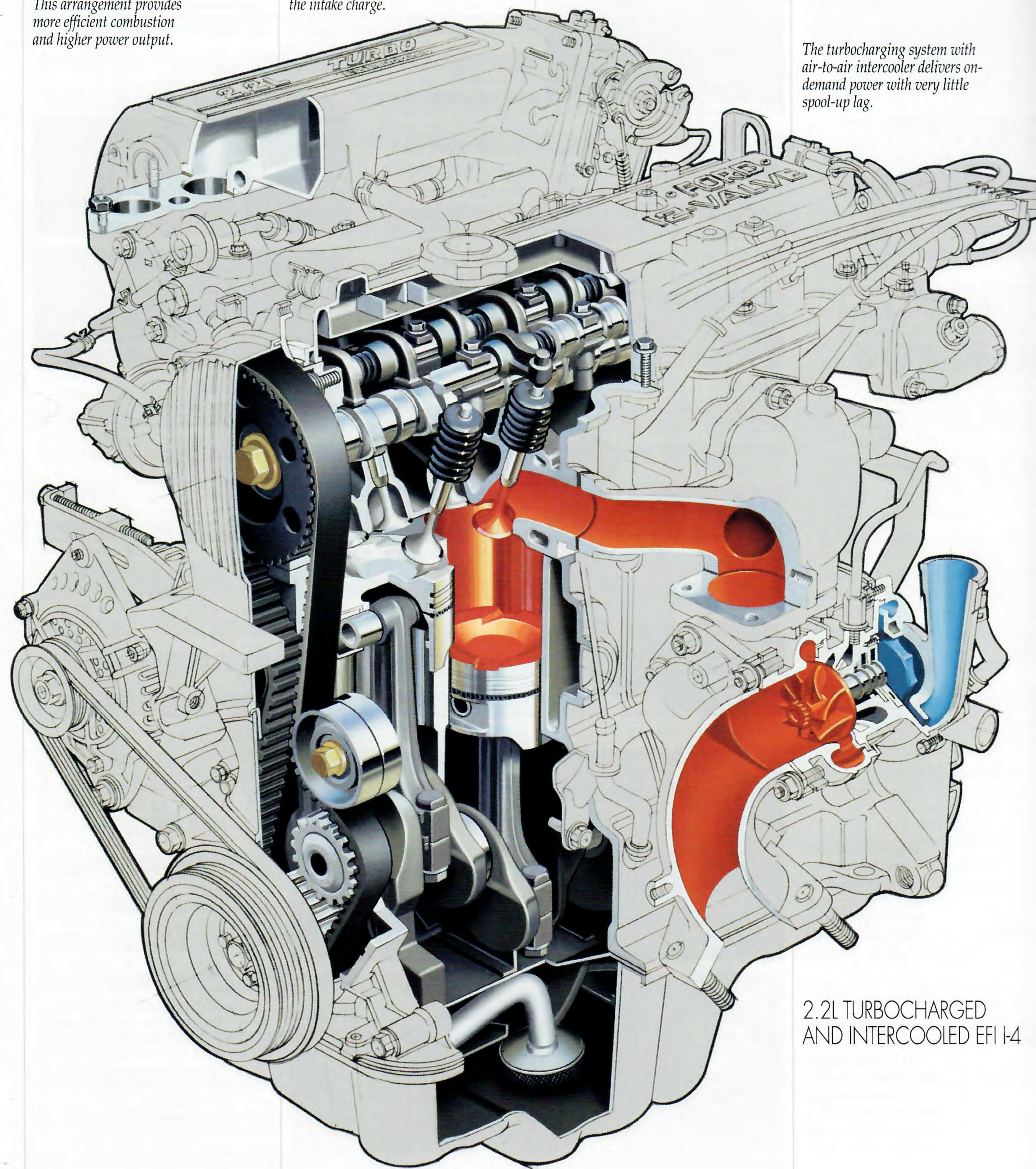
*The 2.2L multi-port fuel-injected I-4 engine has three valves per cylinder — two for intake, one for exhaust. This arrangement provides more efficient combustion and higher power output.*

*Computer-controlled multi-port electronic fuel-injection, with a fuel injector at each intake port, precisely measures the intake charge.*

*A dual-valve throttle body precisely regulates the air flow through a tuned air intake plenum.*

*Combustion chambers are multi-spherical with spark plugs near the center for excellent thermodynamic efficiency.*

*The turbocharging system with air-to-air intercooler delivers on-demand power with very little spool-up lag.*



2.2L TURBOCHARGED AND INTERCOOLED EFI I-4

*The optional anti-lock brake system (ABS) consists basically of a speed sensor at each wheel and a microprocessor. When braking-induced wheel lock-up is detected, the system "pumps" the brakes up to 10 times per second. In a hard braking situation, ABS gives a greater degree of steering control, to help you come to a straight stop.*

THREE EXCITING  
PROBE MODELS.  
AND A LOT OF  
GREAT WAYS TO  
EQUIP THE ONE  
THAT MATCHES  
YOUR STYLE.



Flip-up open air roof, an attractive appearance as well as comfort feature.

Personal driving enjoyment is what Probe is about. And there are a lot of ways to enjoy the Probe driving experience. It's just a matter of choosing and equipping the Probe that expresses your personal style.

There are three Probes to choose from, each with its own list of standard features and a Preferred Equipment Package. These packages, detailed in the chart on the next page, make it easy to order a well-equipped Ford Probe. And they offer savings on select features. Compared with the



The power driver's seat, optional in LX and GT, provides forward/back and vertical height adjustment at the touch of a button.

prices of the items if they were purchased separately, the discounts are the equivalent to getting certain equipment at no extra charge.

To further personalize your Probe, choose from the great selection of appearance, comfort and convenience options that are available separately, some of which are shown here.

Preferred Equipment Package features are subject to change over the course of the year. So for the latest information on package contents, see your Ford Dealer.



The electronic AM/FM stereo is available with cassette player, premium sound speakers, amplifier, and power antenna. You can also order the compact disc player for the ultimate in sound fidelity.

Want information on speed, fuel economy, distance, and travel time? Whatever you'd like to know, it's likely to be available in the optional Trip computer.



Left to right: luxury wheel cover (GL, LX); 14" cast aluminum wheel (optional on GL); 15" cast aluminum wheel (optional on LX); and unique-design cast aluminum wheel (GT).



### PRODUCT CHANGES

Following publication of the catalog, certain changes in standard equipment, options, prices and the like, or product delays, may have occurred which would not be included in these pages. Your Ford Dealer is your best source for up-to-date information.

Ford Division reserves the right to change product specifications at any time without incurring obligations.

### PREFERRED EQUIPMENT PACKAGES AND OPTIONS

Note: Package content is subject to change.  
X = Included in package S = Standard O = Optional

	GL 251A	LX 253A	GT 261A
<b>Appearance/Comfort/Convenience</b>			
Tilt steering column and cluster	X	X	X
Rear window defroster	X	X	X
Tinted glass	X	X	X
Dual illuminated visor vanity mirrors	X	X	X
Manual air conditioning	O	X	X
Electronic climate-control air conditioning		O	O
Sport Option: rear spoiler plus aluminum wheels with P205/60HR15 BSW tires		X	
Convenience group I: dual electric remote-control mirrors; interval windshield wipers; glove box and under-hood lights; fade-to-off dome lamp; headlamps-on warning light	X	X	X
Convenience group II: walk-in (to rear seat) passenger's seat; remote-control fuel filler door and liftgate releases; rear window wiper/washer (not available on GL); cargo tie-down net	O	O	O
Electronic instrument cluster: digital readouts for speedometer, odometer and trip odometer; and analog readouts for tachometer, engine temperature, oil pressure, voltmeter, and fuel level. Includes vehicle maintenance monitor items plus "speed alert" feature		O	
Vehicle maintenance monitor with overhead console and map light: signals when oil, fuel, engine coolant or washer fluid level is low; provides service interval information; indicates when driver's door is ajar and when a headlamp, taillamp or stoplamp is out. Included in Electronic instrument cluster.			O
Trip computer: displays average fuel economy, instantaneous fuel economy, distance to empty, average speed, elapsed travel time, distance to destination, time to destination, and English/metric conversion		O	O
Flip-up open-air roof	O	O	O
Speed control	O	O	O
Illuminated entry system		O	O
Power driver's seat		O	O
Power door locks	O		
Power side windows and door locks		O	O
Bucket seats with leather seating surfaces		O	O
<b>Stereo Systems</b>			
Electronic AM/FM stereo radio with cassette player, premium sound system and power antenna	O	X	X
Electronic AM/FM stereo radio with cassette player, premium sound system, compact disc player, and power antenna	O	O	O
<b>Performance</b>			
Electronic 4-speed automatic transaxle	O	O	O
Anti-lock brake system		O	O
Aluminum wheels with P195/70HR14 BSW tires	O		

### COLORS AND TRIMS

Exterior Paint Colors Probe GL and LX	Interior Trim Colors			
	Titanium	Crystal Blue	Scarlet Red	Sandalwood
Black	■		■	■
Oxford White	■	■	■	■
Rio Red Tinted Clearcoat	■		■	■
Calypso Green Clearcoat Metallic	■			
Bimini Blue Clearcoat Metallic	■			
Wild Strawberry Clearcoat Metallic (GL only)	■		■	
Ultra Blue Clearcoat Metallic (GL only)	■			
Twilight Blue Clearcoat Metallic	■	■		
Light Titanium Clearcoat Metallic	■	■	■	
Deep Titanium Clearcoat Metallic	■	■	■	
<b>Probe GT</b>				
Black	■		■	
Oxford White	■		■	
Rio Red Tinted Clearcoat	■		■	
Calypso Green Clearcoat Metallic	■			
Bimini Blue Clearcoat Metallic	■			
Twilight Blue Clearcoat Metallic	■			
Light Titanium Clearcoat Metallic	■			
Deep Titanium Clearcoat Metallic	■		■	

### MAJOR STANDARD FEATURES

#### Exterior

Concealed/retractable halogen headlamps  
Tinted rear window and quarter window glass  
Wraparound quarter windows with flush glass over concealed center and rear pillars  
Protective bodycolor bodyside moldings (GL, LX)  
Aero-design protective cladding with integral rocker panel moldings/spats and bodyside moldings (GT)  
Unique front fascia with fog lamps and unique rear end with spoiler (GT)  
Wheel trim: luxury covers (GL, LX); aluminum wheels (GT)

#### Interior

Reclining front cloth bucket seats with driver-side vertical height adjustment (GL); plus driver-side adjustment for tilt, lumbar support, and side bolsters (LX, GT)  
Seat trim: deluxe (GL); luxury (LX); sport (GT)  
Door trim: all-vinyl (GL); cloth inserts and map pockets (LX); carpeted lower sections and map pockets (GT)  
Leather-wrapped steering wheel and shift knob (GT)  
Automatic front shoulder belt restraint system and manual lap belts  
50/50 split fold-down rear seats with lap/shoulder belts  
Electronic AM/FM stereo radio with digital clock and four speakers (credit option available with GL model)  
Tachometer, fuel gauge, engine temperature gauge, ammeter, oil pressure gauge, low oil light (GT), turbo boost gauge (GT), and trip odometer  
Side window demisters on door panels  
Cargo area cover (removable)

#### Functional

Aerodynamic coefficient of drag (Cd): 0.308 (LX); 0.312 (GT)  
Engines: 2.2L 12-valve I-4 (GL); 3.0L V-6 (LX); 2.2L 12-valve turbocharged and intercooled I-4 (GT)  
Multi-port electronic fuel injection  
5-speed manual overdrive transaxle  
Front-wheel drive  
4-wheel MacPherson strut independent suspension system; includes special handling components on GT  
Tires: P195/70R14 BSW (GL, LX); P205/60R15 BSW performance (GT)  
Steering: power rack-and-pinion (GL, LX); computer-controlled variable power-assist, speed sensitive (GT)  
Brakes: power front disc/rear drum (GL); power 4-wheel disc (LX, GT)



### 6-YEAR/100,000-MILE CORROSION PROTECTION

Corrosion warranty coverage for outer body panel rust-through is 6 years or 100,000 miles, whichever comes first. See your Ford Dealer for a copy of this limited warranty.



Optional Ford Extended Service Plans cover major components on new Ford cars and light trucks for longer than the vehicle's basic warranty. Your Ford Dealer has full details.

### MOTORCRAFT REPLACEMENT PARTS

Genuine Ford and Motorcraft original equipment replacement parts meet the

same high standards as those installed in production.



Ford Credit's Red Carpet Lease® program makes driving a new Ford even more pleasurable. With it, qualified lessees can drive a new car or truck every few years, and can generally select a more expensive vehicle (or one with more options) at a lower monthly payment. See your dealer today for details on Red Carpet Lease.

### OPTIONS AVAILABILITY

Options shown or described in this catalog are available at extra cost and may be offered only in combination with other options or subject to additional ordering requirements or limitations.

