



**Drive one.**

**09 SPORT TRAC**





Drive one.

# Colorize your Sport Trac

## 09 SPORT TRAC

### Exterior and Interior Selections

- Camel
  - Charcoal Black
- | XLT |  |
|-----|--|
| ●   | Sangria Red Metallic <sup>1,2</sup>    |
| ●   | Brilliant Silver Metallic <sup>1</sup> |
| ●   | Dark Copper Metallic <sup>1,2</sup>    |
| ●   | Sport Blue Metallic <sup>1</sup>       |
| ●   | White Suede                            |
| ●   | Black                                  |
- | LIMITED |  |
|---------|--|
| ●       | Sangria Red Metallic <sup>1,2</sup>    |
| ●       | Brilliant Silver Metallic <sup>1</sup> |
| ●       | Dark Copper Metallic <sup>1,2</sup>    |
| ●       | Sport Blue Metallic <sup>1</sup>       |
| ●       | White Suede                            |
| ●       | Black                                  |
- | LIMITED WITH ADRENALIN PACKAGE |  |
|--------------------------------|--|
| ●                              | Brilliant Silver Metallic <sup>1</sup> |
| ●                              | Colorado Red                           |
| ●                              | White Suede                            |
| ●                              | Black                                  |

<sup>1</sup>New for 2009. <sup>2</sup>Late availability.



Sangria Red Metallic



Brilliant Silver Metallic



Dark Copper Metallic



Sport Blue Metallic



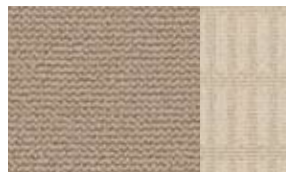
Colorado Red



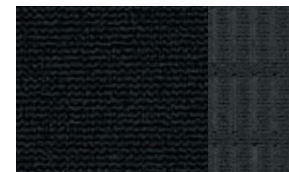
White Suede



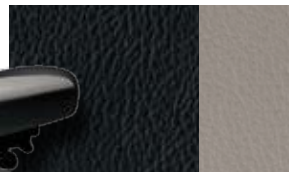
Black



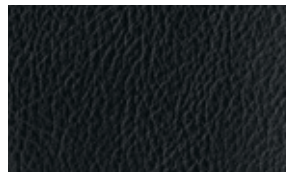
Camel Cloth with Sand Inserts  
Standard on XLT



Charcoal Black Cloth  
Standard on XLT



Charcoal Black Leather with  
Medium Light Stone Inserts (shown)  
Standard on Limited



Charcoal Black Leather  
with Perforated Inserts  
Standard on Limited with Adrenalin Package



Camel Leather with Sand Inserts  
Standard on Limited

Ford uses clearcoat paint for beauty and protection. Colors shown are representative only. Not all colors are available on all models. See your dealer for actual paint/trim options. Vehicles shown may contain optional equipment.



Drive one.

# 09 SPORT TRAC

## Dimensions<sup>1</sup>

EXTERIOR	
Length	210.2"
Wheelbase	130.5"
Overhang – Front	35.4"
Overhang – Rear	44.3"
Width –	
Excluding mirrors	73.7"
Including mirrors	84.8"
Mirrors folded	77.5"
Height (with options)	72.5"
Minimum running ground clearance	8.5"
Open tailgate to ground	30.9"
Ramp breakover angle	17.2°
Angle of approach	28.7°
Angle of departure	17.2°
INTERIOR	
<b>Front</b>	
Head room	39.8"
Shoulder room	59.0"
Hip room	55.4"
Leg room	42.4"
<b>Rear</b>	
Head room	38.5"
Shoulder room	58.9"
Hip room	55.5"
Leg room	36.9"
Cargo volume (cu. ft.)	
Behind front seats	44.4
Cargo box	37.5

<sup>1</sup>Dimensions may vary by trim level.

Cargo and load capacity limited by weight and weight distribution.

## Standard Features

MECHANICAL
• 4.0L SOHC V6 engine with 5-speed automatic transmission
• 4-wheel Anti-lock Brake System (ABS)
• Class II trailer tow hitch receiver
• Independent front and rear suspensions
• Non-limited-slip rear axle (3.73 ratio)
• Trailer Sway Control
SAFETY/SECURITY
• Adaptive driver and front-passenger front airbags <sup>2</sup>
• Adaptive stroking steering column
• AdvanceTrac <sup>®</sup> with RSC <sup>®</sup> (Roll Stability Control™) <sup>3</sup>
• Belt-Minder <sup>®</sup> front safety belt reminder
• Front-Passenger Sensing System
• Front-seat side airbags <sup>2</sup>
• LATCH – Lower anchors and tether anchors for child-safety seats (in rear-outboard seats)
• Safety belts with pretensioners and adaptive load-limiting retractors (height-adjustable in front row)
• Safety Canopy <sup>®</sup> System with side-curtain airbags <sup>2</sup> and rollover sensor
• SecuriLock <sup>®</sup> passive anti-theft ignition system
• SOS Post-Crash Alert System flashes hazard lights and sounds horn after airbag deployment or safety belt pretensioner activation in certain collisions <sup>4</sup>
• Tire Pressure Monitoring System (excludes spare)

INTERIOR
• 2-line message center with outside temperature display and compass
• 60/40 split-folding rear seat
• Air conditioning (manual)
• AM/FM stereo/single-CD player with MP3 capability
• Auxiliary audio input jack
• Coat hooks (2)
• Cruise control
• Floor console with floor shifter
• Front dome/map lights
• Grab handles (1 for front passenger and 2 in rear)
• Illuminated glove compartment
• Large overhead console
• Leather-wrapped steering wheel with secondary audio controls and cruise control
• Power points (3)
• Power windows with one-touch-down driver-window feature
• SIRIUS Satellite Radio with 6-month subscription
• Tilt steering column

EXTERIOR
• 16" painted cast-aluminum wheels
• P235/70R16 all-season OWL tires
• 3-bar chrome grille with nostrils
• Cargo box power point
• Cargo box tie-downs (10)
• Composite material cargo box with 3 gear bins
• Fog lamps
• Power sideview mirrors with security approach lamps
• Power-sliding rear window

<sup>2</sup>Always wear your safety belt and secure children in the rear seat.

<sup>3</sup>Remember that even advanced technology cannot overcome the laws of physics. It's always possible to lose control of a vehicle due to inappropriate driver input for the conditions. For more information on AdvanceTrac with RSC, visit [fordvehicles.com](http://fordvehicles.com)

<sup>4</sup>SOS hardware may become damaged or the battery may lose power in a crash, which could prevent operation. Not all crashes will activate an airbag or safety belt pretensioner.



Drive one.

## Personalize your Sport Trac in 5 steps

### 1 Choose your powertrain

#### 4.0L SOHC V6

- 5-speed automatic transmission
- 210 hp @ 5100 rpm
- 254 lb.-ft. of torque @ 3700 rpm
- Maximum loaded trailer weight<sup>1</sup>
  - 3500 lbs. on 4x2 (Class II)
  - 3500 lbs. on 4x4 (Class II)
  - 5250 lbs. on 4x2 (Class III/IV)
  - 5080 lbs. on 4x4 (Class III/IV)

#### 4.6L 3V V8

- 6-speed automatic transmission
- 292 hp @ 5700 rpm
- 315 lb.-ft. of torque @ 4000 rpm
- Maximum loaded trailer weight<sup>1</sup>
  - 3500 lbs. on 4x2 (Class II)
  - 3500 lbs. on 4x4 (Class II)
  - 7160 lbs. on 4x2 (Class III/IV)
  - 6990 lbs. on 4x4 (Class III/IV)

<sup>1</sup>Maximum weights shown are for properly equipped vehicles with required equipment and a 150-lb. driver. Weight of additional options, equipment, passengers and cargo must be deducted from this weight. For additional information, see your Ford Dealer.



Optional 4.6L 3-valve V8 engine

### 2 Choose your trim level



#### XLT

Equipped with all the standard features on the previous page, plus:

- 16" painted cast-aluminum wheels
- Black exterior accents
- 3-bar chrome grille with nostrils
- Fog lamps
- Power sideview mirrors with security approach lamps
- Power windows with one-touch-down driver-window feature
- Power-sliding rear window
- Auxiliary audio input jack
- Cloth front bucket seats with 2-way adjustable head restraints
- Leather-wrapped steering wheel with secondary audio controls and cruise control
- Molded-rubber flooring
- Heavy-duty berber floor mats
- 2-line message center with outside temperature display and compass
- Cruise control
- SIRIUS<sup>®</sup> Satellite Radio with 6-month subscription



#### Limited

Includes select standard Sport Trac XLT features, plus:

- 18" machined-aluminum wheels
- Monochromatic exterior appearance
- Automatic headlamps
- Heated sideview mirrors
- Silver-painted roof side rails and step bars
- Hard tonneau cover
- Keyless-entry keypad
- Two-tone leather-trimmed seating with heated front bucket seats, 10-way power driver seat and 4-way manual passenger seat
- Ford SYNC<sup>®</sup> voice-activated, in-vehicle communications and entertainment system<sup>2</sup>
- Auto-dimming rearview mirror

<sup>2</sup>Driving while distracted can result in loss of vehicle control. Only use mobile phones and other devices, even with voice commands, when it is safe to do so. Microsoft is a registered trademark of Microsoft Corporation. The Bluetooth word mark is a registered trademark owned by the Bluetooth SIG, Inc.

Continue your build on the next page.

## 09 SPORT TRAC

### Wheels



16" Painted Cast-Aluminum  
Standard on XLT



17" Painted Cast-Aluminum  
Included in XLT Appearance Package



18" Machined-Aluminum  
Standard on Limited



18" Chrome-Clad Aluminum  
Included in Limited Chrome Package



20" Polished-Aluminum  
Included in Adrenalin Package



Drive one.

# 09 SPORT TRAC

## 3

### Choose your options

- 4.6L 3-valve V8 with 6-speed automatic transmission and non-limited-slip rear axle (3.55 axle ratio) (Available on XLT and Limited)
- Premium Sound System (Available on Limited; requires Limited Convenience Package)
- Black roof-rack crossbars (Available on XLT and Limited)
- Cargo cage bed extender (Available on XLT and Limited)
- Control Trac® 4-wheel-drive (4WD) system (Available on XLT and Limited; not available with Adrenalin Package)
- Ford SYNC® voice-activated, in-vehicle communications and entertainment system (Available on XLT; requires XLT Convenience Package)
- Hard, locking tonneau cover (Available on XLT)
- Tonneau cover delete (Available on Limited)
- Power moonroof with sunshade and one-touch-open/-close feature (Available on Limited; requires Limited Convenience Package)
- Voice-activated Navigation System with nearly 10-gigabyte hard drive, single-disc Premium Sound System, and SIRIUS Travel Link™ services<sup>1</sup> with 6-month subscription (Available on Limited; requires Limited Convenience Package)

<sup>1</sup>Real-time traffic monitoring available in select markets. Some features are unavailable while driving. Service not available in Alaska or Hawaii. See your Ford Dealer for details. \*SIRIUS,™ the SIRIUS dog, "SIRIUS Travel Link" and related marks are trademarks of SIRIUS Satellite Radio Inc.

## 4

### Choose your packages

#### Class III/IV Trailer Tow Package

7-pin connector and hitch receiver (Available on XLT and Limited)

#### XLT Convenience Package

Auto-dimming rearview mirror, 6-way power driver seat, automatic headlamps, power-adjustable pedals, Reverse Sensing System and SecuriCode™ keyless-entry keypad (Available on XLT)

#### XLT Appearance Package

17" painted cast-aluminum wheels, P245/65R17 all-season OWL tires and Black step bars (Available on XLT)

#### Sun & SYNC Value Package

Power moonroof and Ford SYNC (Available on XLT; requires XLT Convenience Package)

#### Limited Convenience Package

Dual-zone Electronic Automatic Temperature Control, 4-line message center, power-adjustable pedals and Reverse Sensing System (Available on Limited; Reverse Sensing System not available with Adrenalin Package)

#### Limited Chrome Package

18" chrome-clad aluminum wheels, chrome sideview mirror caps, chrome roof side rails and chrome step bars (Available on Limited; requires Limited Convenience Package; not available with Adrenalin Package)

#### Adrenalin Package (available in 4x2 or AWD)

20" polished-aluminum wheels with P255/50R20 A/S BSW tires; Black grille; unique front and rear fascias; unique fender vents; unique fog lamps and headlamps; unique running boards; single rear-exit exhaust with dual tip; Adrenalin tailgate badge; Charcoal Black instrument panel, seats, door inserts and console lid; Stone headliner; Charcoal Black leather-trimmed heated front seats with perforated leather inserts; and Adrenalin-branded floor mats (wheel lips and roof side rails are deleted) (Available on Limited; not available with Limited Chrome Package)



Available Adrenalin Package



Available Limited Chrome Package

Comparisons based on 2008 competitive models (Sport Utility Truck class), publicly available information and Ford certification data at time of release. Some features discussed may be optional. Vehicles shown may contain optional equipment. Features shown may be offered only in combination with other options or subject to additional ordering requirements or limitations. Dimensions shown may vary due to optional features and/or production variability. Following release of this PDF, certain changes in standard equipment, options and the like, or product delays may have occurred which would not be included in these pages. Your Ford Dealer is the best source for up-to-date information. Ford Division reserves the right to change product specifications at any time without incurring obligations.



Drive one.

# 09 SPORT TRAC

## 5 Customize your Sport Trac

- A. Katzkin® Leather seat covers<sup>1</sup>
  - B. Garmin® nüvi® Portable Navigation System<sup>1</sup>
  - C. Splash guards
  - D. Thule® racks<sup>1</sup>
  - E. Dual INVISION® DVD Headrests<sup>1</sup>
  - F. Bug deflector
  - G. Side window deflectors
  - H. All-weather floor mats
  - I. Premium carpeted floor mats
  - J. Trailer hitch balls/draw bars
  - K. Wheel locks
  - L. Bed mat
- Also available:**
- Bi-directional remote start system
  - Interior lighting kit
  - Skyway SmartAlert™<sup>1</sup>
  - Wiper Shaker<sup>1</sup>
  - HD Radio®<sup>1</sup>
  - Moonroof deflector
  - Ashcup/coin holder/Smoker's Pack
  - Vehicle security system
  - Neutral tow kit

<sup>1</sup>Ford Licensed Accessories.  
Garmin is a registered trademark of Garmin Ltd.



Visit [fordaccessories.com](http://fordaccessories.com) to use the Accessorizer, learn complete accessory details and view purchase instructions.



Genuine Ford Accessories will be warranted for whichever provides you the greatest benefit: 12 months or 12,000 miles (whichever occurs first), or the remainder of your Bumper-to-Bumper 3-year/36,000-mile New Vehicle Limited Warranty. Contact your local Ford Dealer for details and a copy of the limited warranty. Ford Licensed Accessories (FLA) are warranted by the accessory manufacturer's warranty. Contact your Ford Dealer for details regarding the manufacturer's limited warranty and/or a copy of the FLA product limited warranty offered by the accessory manufacturer.



Drive one.

# 09 SPORT TRAC



### Drive quality.

You see it, feel it, hear it. Quality matters. And Ford delivers. In fact, Ford is in a dead heat with Toyota when it comes to quality.<sup>1</sup>



### Drive green.

Sport Trac features an available, fuel-efficient 6-speed automatic transmission that delivers smooth acceleration and up to 21 mpg<sup>2</sup>



### Drive safe.

Every Sport Trac features 6 airbags, our exclusive Intelligent Safety System™ and our AdvanceTrac® with exclusive RSC® (Roll Stability Control™).



### Drive smart.

Stay in touch and manage your music on the go with our exclusive, available Ford SYNC® voice-activated, customizable media system.<sup>3</sup>



<sup>1</sup>Based on cumulative survey data of 2007 MY Ford and competitive owners at 3 months of service in 3 surveys conducted 9/06-5/07. <sup>2</sup>2009 EPA-estimated 14 mpg city/21 hwy. for V8 engine and 4x2. <sup>3</sup>Driving while distracted can result in loss of vehicle control. Only use mobile phones and other devices, even with voice commands, when it is safe to do so. Microsoft is a registered trademark of Microsoft Corporation. The Bluetooth word mark is a registered trademark owned by the Bluetooth SIG, Inc.

**New Vehicle Limited Warranty.** We want your Ford Sport Trac ownership experience to be the best it can be. So under this warranty, your new vehicle comes with 3-year/36,000-mile Bumper-to-Bumper Coverage, 5-year/60,000-mile Powertrain Warranty Coverage, 5-year/50,000-mile Safety Restraint Coverage, and 5-year/unlimited-mile Corrosion (Perforation) Coverage – all with no deductible. Please ask your Ford Dealer for copies of these limited warranties.

**Roadside Assistance.** Covers your vehicle for 5 years or 60,000 miles, so you have the security of knowing that help may be only a phone call away should you run out of fuel, lock yourself out of the vehicle, or need towing. Your Ford Dealer can provide complete details on all of these advantages.

**Ford Credit.** Get the ride you want. Whether you plan to lease or finance, you'll find the choices that are right for you at Ford Credit. Ask your Ford Dealer for details or check us out at [fordcredit.com](http://fordcredit.com).

**Extended Service Plan.** For a purchase or lease, the Ford Extended Service Plan (ESP) gives you "Peace-of-Mind" protection designed to cover key vehicle components and protect you from the cost of unexpected repairs. Ask your dealer for an ESP, the only service contract backed exclusively by Ford and honored at all Ford Lincoln Mercury dealerships.

**Insurance Services.** Get Ford Motor Company quality in your auto insurance. Our program offers industry-leading benefits and competitive rates. Call 1-877-367-3847, or visit us at [fordvip.com](http://fordvip.com) for a no-obligation quote. Insurance offered by American Road Services Company (in CA, American Road Insurance Agency), a licensed agency and subsidiary of Ford Motor Company.



© 2008 Ford Motor Company

09EXSTWEBPDFSPEC