

ALL-NEW 2017 SUPER DUTY CHASSIS CAB



OUR TOUGHEST, SMARTEST, MOST CAPABLE CHASSIS CAB EVER.

The 2017 version of America's best-selling Chassis Cab¹ is our toughest and most capable yet. From its high-strength, military-grade, aluminum alloy body² that's lighter, more ding-resistant and will not rust, to strengthened frames, to beefed-up axles and drivetrains, we've fortified its components to carry more than ever before. And do it with even more confidence.

Straight from the factory, the all-new 2017 Ford Super Duty Chassis Cab already has some impressive claims to fame.

FIRST-IN-CLASS

- High-strength, military-grade, aluminum alloys
- Inflatable rear-seat outboard safety belts³

BEST-IN-CLASS

- 40,000 lbs. max. Gross Combined Weight Rating (GCWR)⁴
- 31,800 lbs. max. towing capacity⁴
- 12,730 lbs. max. payload capacity⁴
- 7,500 lbs. max. Front Gross Axle Weight Rating (GAWR)⁴
- 430 lb.-ft. of gas torque
- Most available configurations
- Most available configurations for CNG/propane upfits

CLASS-EXCLUSIVE

- 6.8L Triton® V10 gas engine
- Standard flat load floor inside⁵
- Collapsible and lockable under-seat storage^{3,6} that folds into flat load floor
- 110V/400W power outlets in cab³
- LED sideview mirror spotlights³



2017 Super Duty® Chassis Cab | ford.com

F-450 XL Regular Cab 4x4 in Oxford White with available equipment. ¹Class 3-5 Chassis Cabs based on Ford segmentation. Based on IHS Automotive, 2015 U.S. Class 3-5 Conventional Chassis Cab New Registrations. ²6000-series aluminum alloy. ³Available feature. ⁴When properly equipped. ⁵SuperCab and Crew Cab. ⁶Crew Cab only. Vehicles throughout this brochure may be shown with optional and aftermarket upfit equipment.



UPFITTER DREAMS BEGIN BACK HERE.

Wreckers, heavy-haulers and emergency vehicles rely on the brute strength of F-Series Super Duty on a daily basis. As do vocational workers in heavy construction, landscaping, electrical and more. Now, with an all-new Super Duty Chassis Cab frame and body, they can work smarter. With available longer frame extensions for greater configuration flexibility. A new Upfitter Interface Module¹ for ease of upfitting. 6 auxiliary upfitter switches with more amperage and a new overhead location in the cab to help operate a variety of powered options. Plus, all of these great features.

Beefier Driveline Components include stronger and more capable front and rear axles. They've been re-engineered with new gear and bearing designs, and optimized for weight to be more efficient than their predecessors. Plus, driveshafts, transfer cases and U-joints were upgraded to handle the massive torque output of Super Duty engines. All-new rear axles on DRW trucks have more weight-carrying and towing capability than the previous generation.

An Open C-Channel Frame aft of cab features a standard 34" frame-rail width, and Auxiliary Frame Extensions¹ allow easy body and vocational equipment upfits.

95% High-Strength Steel makes up the all-new frame, which is fully boxed under the cab and forward. The frame is 8 times stiffer than the previous generation. Up to 10 crossmembers enhance strength and stiffness, and some are through-welded to increase torsional stiffness as well.

A First-in-Class High-Strength, Military-Grade, Aluminum Alloy Cab reduces body weight, allowing Ford engineers to reinvest weight savings into strengthening the frame and driveline components for the increased capability of Super Duty.

New 4-Channel Brake Controls allow for the addition of AdvanceTrac[®] with RSC[®] (Roll Stability Control[™])² and trailer sway control² on Chassis Cab DRW models – bringing an added measure of stability to the Super Duty fleet on multiple road surfaces.

An Upgraded Front Axle¹ and upgraded front coil springs¹ provide an available best-in-class Front Gross Axle Weight Rating (FGAWR) of 7,500 lbs. on Super Duty F-450/F-550 Chassis Cab models – enabling the trucks to carry taller utility buckets and cranes, bigger snowplows, and more.

Larger Brake Rotors contribute to a larger brake pad usable volume, increasing both pad and rotor life. They are key components of a completely re-engineered brake system, including a larger master cylinder with more volume, which reduces the risk of thermal brake fade under extreme braking conditions.

POWER STROKE

750 LB.-FT. TORQUE | 330 HORSEPOWER

The proven 6.7L Power Stroke® V8 Turbo Diesel engine¹ is designed, engineered and built by Ford – and has been brutally tested and continually improved since its introduction. It's paired with an equally rugged TorqShift® 6-speed automatic transmission with SelectShift® capability to deliver its highest combination of horsepower and torque ever. 750 lb.-ft. of torque: a 13.6% increase.² And 330 hp: a 10% increase.² Numbers that push, pull and speak for themselves.

Upgraded this year: pistons, rods and crankshaft, as well as cylinder heads and gaskets. Plus, a driver-controlled engine exhaust brake with On, Off and Auto settings that allows use of engine braking to help slow the truck down and control vehicle speed. From 120° scorching heat to -40° bone-chilling cold, the most tested Power Stroke diesel ever is also B20-capable. And right where it belongs in the 2017 Super Duty Chassis Cab.

6.7L POWER STROKE



Two gas engines power the all-new 2017 Super Duty Chassis Cab lineup. Designed, engineered, built and torture-tested by Ford, both offer proven heavy-duty performance and are paired with our TorqShift® 6-speed automatic transmission. Our class-exclusive 6.8L Triton® V10 engine,¹ producing 424 lb.-ft. of torque along with 288 horsepower, provides plenty of pull for your heaviest loads. Our E85-capable 6.2L 2-valve V8, standard on F-350, produces 385 horsepower and a class-best 430 lb.-ft. of gas torque. An enhanced long-runner intake manifold combines with revised camshaft profiles this year to increase peak torque by 25 lb.-ft.² With significant improvements in torque performance, the 6.2L V8 delivers better working power throughout the rpm range – for improved driveability overall, and enhanced hauling and towing performance.

Alternative fuel options include a CNG/Propane Gaseous Engine Prep Package³ that readies your truck to be upfit for compressed natural gas (CNG), propane autogas, or as a bi-fuel vehicle with the ability to switch between CNG, or propane and gasoline. Providing flexibility and long range, trucks upfit to a bi-fuel system include a tank for each type of fuel. This may even help you qualify for state incentives related to alternative fuel use, infrastructure or vehicles. Visit afdc.energy.gov/afdc/laws for details.⁴

PROVEN GAS ENGINES

6.2L | 6.8L

2-VALVE V8 | 3-VALVE V10



FLEX FUEL



POWER YOUR UPFITS ANYTIME, ANYWHERE.

With our class-exclusive live-drive power takeoff (PTO) provision¹ now available on all 3 powertrains, workers across many industries have access to big-truck capability throughout the 2017 F-Series Super Duty Chassis Cab lineup.

From F-350 to F-550 models, they'll be able to power hydraulically driven and mechanical accessories, such as sprayer pumps, lift buckets, generators, snowplows and more. Because the PTO output gear is directly linked to the engine crankshaft, power is available whenever the engine is running – whether the truck is moving or not. Our PTO provision on the TorqShift[®] 6-speed automatic transmission has a torque rating of up to 250 lb.-ft. on all 3 engines.² The diesel also incorporates split-shaft capability.



The TorqShift 6-speed automatic transmission with SelectShift[®] capability delivers smooth, efficient performance when paired with each of the 3 Super Duty Chassis Cab engines. A multi-segment clutch friction-plate design on the transmission improves oil flow, reduces power loss and maximizes productivity. A high-efficiency fluid filter has a fluid change interval of 150,000 miles. Since every engine and transmission is designed by Ford, each powertrain works seamlessly with chassis components and vehicle calibrations.

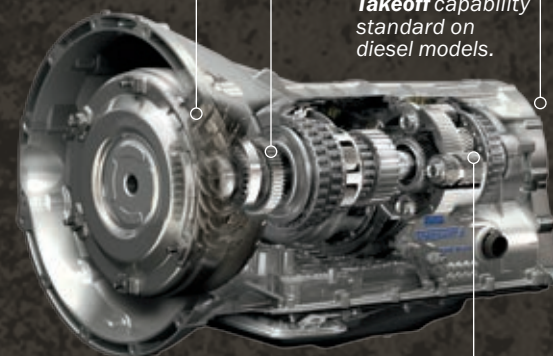
3-Plate, 2-Stage Torque Converter

Designed to handle substantial horsepower and torque forces from the 6.7L Power Stroke[®] V8 Turbo Diesel,² and help all engines work efficiently at a low rpm thanks, in part, to low-speed lockup capability (down to 900 rpm).

Live-Drive Power Takeoff Provision¹

Includes both stationary and mobile modes on diesel and gas.

Split-Shaft Power Takeoff capability standard on diesel models.



Sinter-Brazed Pinion Carriers Help manage the diesel's extreme low-end torque, as well as the high shift speeds of the gas engine. When teamed with a gasoline engine, the transmission features up to 4-pinion front carriers and 6-pinion rear. Diesel models feature up to 6-pinion carriers in front and up to 8-pinion carriers in the rear.

SelectShift and Progressive Range Select

- Manual upshift and downshift capability
- Progressive range select mode lets you reduce the available gear range in difficult road/load conditions
- Tow/haul mode helps to eliminate unwanted frequent gear-shifting on steep uphill grades, while allowing engine braking to help maintain vehicle speed when descending a steep grade

The all-new 2017 Chassis Cab inspires towing confidence with a wide range of towing capacities and plenty of assistance – including a Rear View Camera and Prep Kit^{1,2} and class-exclusive PowerScope[®] trailer tow mirrors.¹ To help make backing up easier, the Rear View Camera and Prep Kit features a video display as well as cab and frame wiring. A remote camera with a wiring harness extension allows you to place the camera where you need it. It's great for hooking up your load, since you can handle a

CLASS-BEST 31,800 LBS. MAX. TOWING.³

To lock out upper gears when heavily loaded or when towing on grades, use the progressive range select mode on the Ford TorqShift[®] 6-speed SelectShift[®] automatic transmission. For optimal towing performance, tow/haul mode helps manage gear selection by keeping the engine in its power band. Trailer sway control⁴ and hill start assist are standard on both SRW and DRW models. Plus, our integrated trailer brake controller¹ helps balance the performance of the truck and your electric trailer brakes.⁵

The standard Individual Tire Pressure Monitoring System⁶ can monitor and display the individual tire pressures,⁷ and warn you if any tire is low. Track towing information on the 8" color LCD productivity screen,¹ such as trailer brake controller settings, vehicle pitch and steering angle, and profiles of up to 10 different trailers – including accumulated miles on each. Whenever there's serious work to be done, look no further than the all-new 2017 Super Duty Chassis Cab.



2017 Super Duty[®] Chassis Cab | ford.com

F-450 XLT SuperCab 4x4 in Oxford White with available equipment. ¹Available feature. ²Driver-assist features are supplemental and do not replace the driver's attention, judgment and need to control the vehicle. ³When properly equipped. F-550 Regular Cab DRW 4x2 Diesel with available equipment. ⁴Remember that even advanced technology cannot overcome the laws of physics. It's always possible to lose control of a vehicle due to inappropriate driver input for the conditions. ⁵Trailer brake controller verified to be compatible with electrically actuated drum brakes and certain electric-over-hydraulic brake systems. See your Ford Dealer for details. ⁶F-350 only. ⁷Not including available spare.





PREPPED FOR PRODUCTIVITY.

You spend as much time here as a home office, so we've made Super Duty Chassis Cab as comfortable – and functional – as possible. The 8" color LCD productivity screen (standard on LARIAT; screens shown at right) in the instrument cluster is your command center. Keep your most used screens front and center with MyView. Just choose your favorites (up to 7) and put them in one consolidated view for your convenience. Unique Super Duty screens include a digital turbo gauge for the 6.7L Power Stroke® V8 Turbo Diesel engine¹ and a DEF gauge (shown middle right). Vital controls are close at hand, like large, easy-to-use buttons on the steering wheel. And the trailer brake controller¹ switch is now closer to the driver. Throughout Chassis Cab, you'll find all the help you need to stay productive. For as long as you need.

Listen to everything you love with SiriusXM® Satellite Radio.¹ Get over 150 channels including all kinds of commercial-free music, plus every major sport and the best talk, news, comedy and entertainment. And you'll hear it all with a 6-month trial subscription to the All Access package, included with your new Chassis Cab. So you can rock your ride, plus listen anywhere online and on the SiriusXM app.²



Tire Pressure Monitoring Screen



DEF Tank Status Screen



Off-Road Status Screen

2017 Super Duty® Chassis Cab | ford.com

F-350 XLT Crew Cab SRW 4x4 cloth-trimmed interior in Medium Earth Gray with available equipment. ¹Available feature. ²SiriusXM audio and data services each require a subscription sold separately, or as a package, by Sirius XM Radio Inc. If you decide to continue service after your trial, the subscription plan you choose will automatically renew thereafter and you will be charged according to your chosen payment method at then-current rates. Fees and taxes apply. To cancel you must call SiriusXM at 1-866-635-2349. See SiriusXM Customer Agreement for complete terms at www.siriusxm.com. All fees and programming subject to change. Trial subscriptions not available in AK and HI.





SMART STORAGE TO HELP GET IT DONE.

All-new Super Duty cabs are longer across the lineup – Regular Cab, SuperCab and Crew Cab. Pairing advanced technology with comfortable, durable materials, this all-new interior works smarter than ever. To keep you productive all day long, smart storage is everywhere. Even under the rear seat. On Crew Cab models, deployable under-seat storage¹ raises up from the floor to form a large bin that can be locked when the seat is down. When not needed, it folds back into the floor to form a convenient flat load floor. And the deep front center console² is large enough for small tools or hanging file folders.



NOW YOU'RE TALKING.

SYNC 3

In addition to all the voice-activated benefits of SYNC^{®1,2} – placing and answering calls, and controlling music from your devices – you'll love the easy-to-use interface of SYNC 3^{1,2}. An 8" color LCD screen displays phone, audio and navigation¹ features. Enhanced voice recognition lets you give simple commands. A capacitive touchscreen includes a convenient swipe feature, as well as pinch-to-zoom functionality within navigation.¹ SYNC 3 also brings you the options of Apple CarPlay^{™3} and Android Auto.^{™4}

Voice-Activated Navigation System¹

Includes a 5-year complimentary trial subscription to SiriusXM[®] Traffic and Travel Link[®] services.⁵ Global Positioning System (GPS) technology is combined with available 3-D mapping and provides voice-guided turn-by-turn directions. You'll get detailed traffic information, plus current and forecasted weather and fuel station locations and prices.

SYNC AppLink

Use your voice to control some of your favorite compatible mobile apps (like Pandora[®] and iHeartAuto), thanks to SYNC AppLink^{®1,6}.

Siri Seamless Integration

Bring the power of Siri[®] into Super Duty with Siri Eyes Free,⁷ your paired iPhone[®] and a long press of the voice-recognition button on the steering wheel.

Automatic Updates Over Wi-Fi

Keep SYNC 3 current with the latest software as new updates become available⁸. All you need is a Wi-Fi[®] connection.

2017 Super Duty[®] Chassis Cab | ford.com

F-350 XLT Crew Cab SRW 4x4 cloth-trimmed interior in Medium Earth Gray with available equipment. ¹Available feature. ²Don't drive while distracted. Use voice-operated systems when possible; don't use handheld devices while driving. Some features may be locked out while the vehicle is in gear. Not all features are compatible with all phones. Message and data rates may apply. ³Requires phone with compatible version of Apple iOS and active data service. SYNC does not control Apple CarPlay while in use. Apple is solely responsible for their functionality. Message and data rates may apply. ⁴Requires phone with compatible version of Android Auto and active data service. SYNC does not control Android Auto while in use. Google and other third parties are responsible for their respective functionality. ⁵SiriusXM audio and data services each require a subscription sold separately, or as a package, by SiriusXM Radio Inc. If you decide to continue service after your trial, the subscription plan you choose will automatically renew thereafter and you will be charged according to your chosen payment method at then-current rates. Fees and taxes apply. To cancel you must call SiriusXM at 1-866-635-2349. See SiriusXM Customer Agreement for complete terms at www.siriusxm.com. All fees and programming subject to change. Trial subscriptions not available in AK and HI. ⁶SYNC AppLink is available on select models and compatible with select smartphone platforms and requires any compatible apps to be installed and running on a capable smartphone while connected to SYNC. Commands may vary by phone and AppLink software. Message and data rates may apply. ⁷Requires SYNC 3. ⁸Optional Navigation System map updates cannot be received via Wi-Fi and require a separate update.



STANDARD FEATURES

Mechanical

TorqShift® 6-speed SelectShift® automatic transmission with tow/haul mode
 Axle – Front, narrow-track, monobeam (F-350 4x4)
 Axle – Front, narrow-track, Twin-I-Beam (F-350 4x2)
 Axle – Front, wide-track, monobeam (F-450/F-550)
 Brakes – Power 4-wheel disc with Anti-Lock Brake System (ABS)
 Manual locking hubs (4x4)
 Oil monitor – Intelligent Oil-Life Monitor® (diesel engine)
 Oil monitor – Oil-life minder (gas engines)
 Stabilizer bars – Front and rear
 Stationary Elevated Idle Control (SEIC)¹
 Steering – Hydraulic power-assisted
 Steering damper
 Suspension – Front, coil springs
 Suspension – Heavy-duty gas shock absorbers
 Suspension – Rear, auxiliary springs
 Trailer sway control
 Trailer tow – 7-wire harness with relays, blunt cut and labeled

Driver-Assist Technology

Autolamp with rainlamp
 Hill start assist

Seating

Rear – 60/40 split flip-up seat with head restraints (SuperCab and Crew Cab)

Interior

Cabin air filter
 Climate control – Air conditioning
 Coat hooks
 Dash-top tray
 Display – Outside temperature
 Glove compartments – 2, illuminated and lockable
 Grab handles – Driver and front-passenger, and rear-passenger on Crew Cab
 Lighting – Dome light
 Lighting – Dual map lights (front on Regular Cab/SuperCab; front and rear on Crew Cab)
 Overhead console with dual storage bins
 Power outlets – 12-volt powerpoint, 2 in instrument panel
 Steering column – Manual-tilt-/telescoping
 Upfitter switches – Four 25-amp and two 40-amp (40-amp are hot-at-all-times capable), located in overhead console
 Windows – Rear quarter flip-out (SuperCab)

Exterior

Daytime running lamps – Configurable
 Doors – 2 (Regular Cab)
 Doors – 4 (SuperCab/Crew Cab)
 Front fender vents
 Front license plate bracket
 Lighting – 3-blink lane change signal
 Lighting – LED roof marker/clearance lamps
 Splash guards – Front (F-450/F-550)
 Tow hooks – Front, 2
 Underhood service lamp
 Windshield wipers – Variable-intermittent with washers

Safety & Security

Airbags – Driver and right-front-passenger front²
 Airbags – Front-seat side²
 Airbags – Front-passenger airbag deactivation switch (Regular Cab and SuperCab)
 Airbags – Safety Canopy® System with side-curtain airbags² and rollover sensor
 AdvanceTrac® with RSC® (Roll Stability Control™)
 Belt-Minder® front safety belt reminder
 Child-safety-seat top tether anchors (Regular Cab front passenger, and all rear-seat positions)
 Front height-adjustable shoulder safety belts
 Individual Tire Pressure Monitoring System (F-350, excludes available spare)
 MyKey®
 SOS Post-Crash Alert System™

Engines

	6.7L Power Stroke V8 Turbo Diesel	6.2L 2-Valve Gas V8 FFV SOHC	6.8L Triton 3-Valve Gas V10 SOHC
Configuration	OHV (32-valve)	Sequential electronic	Sequential electronic
Fuel injection	High-pressure common-rail	Electronic	Electronic
Control system	Electronic	Specially tuned	Specially tuned
Induction system	Single-sequential turbocharger; charged air cooler	Pressurized series flow	Pressurized series flow
Cooling system	Pressurized series flow	Oil-life minder	Oil-life minder
Oil-life monitor	Intelligent Oil-Life Monitor	8	10
Cylinders	8	Aluminum	Aluminum
Cylinder heads	Aluminum	Cast iron	Cast iron
Block material	Compacted graphite iron	Roller-rocker shafts	Hydraulic roller
Valve operation	Push rod/rocker arms	Silent chain	Silent chain
Camshaft drive	Gear	4.02"/3.74"	3.55"/4.17"
Bore/stroke	3.90"/4.25"	9.8:1	9.2:1
Compression ratio	16.2:1	385 @ 5,750 ³	288 @ 4,000 ³
Horsepower @ rpm	330 @ 2,600	430 @ 3,800	424 @ 3,000
Torque lb.-ft. @ rpm	750 @ 2,000	Regular unleaded or E85	Regular unleaded
Recommended fuel	Ultra-low-sulfur diesel or B20 (containing 20% or less biodiesel)		



6 auxiliary upfitter switches, mounted overhead within easy reach of front-seat occupants, provide more total amps than the previous generation.

Up to 6 power sources, including 12-volt powerpoints⁴ and 110-volt power outlets⁴ help you recharge your equipment easily. And the combined max. output of these outlets is increased to 400 watts in Park and 300 watts when driving.

The Rear View Camera and Prep Kit⁴ helps make backing up easier. Place the camera wherever you need it, thanks to a wiring harness extension. Then see what's behind you while slowly backing up through a video display in the cab.

An Upfitter Interface Module⁴ helps upfitters quickly connect their electrical equipment to that of the truck, allowing easier integration of upgrades to meet customer needs.

¹Final-stage manufacturer must supply control switches. ²Always wear your safety belt and follow airbag warning label instructions. ³Certified to SAE J1349. ⁴Available feature.

STANDARD FEATURES

TRIMS

S : Standard A : Available O : Optional

Models

F-350

Maximum Capabilities¹

5th-Wheel Towing: 22,500 lbs.
 Conventional Towing: 17,500 lbs.
 Payload: 8,020 lbs.
 GCWR: 30,000 lbs.
 GVWR: 14,000 lbs.
 Front GAWR: 5,250 lbs. (4x2); 6,000 lbs. (4x4)

Equipment Configurations

Engines: 6.2L Gas V8 Flex Fuel E85-capable
 6.7L Power Stroke® V8 Turbo Diesel B20-capable
 Drivelines: 4x2 or 4x4 • Single Rear Wheel or Dual Rear Wheel
 Bodies: Regular Cab, SuperCab, Crew Cab
 Trim Series: XL, XLT, LARIAT

F-450

Maximum Capabilities¹

5th-Wheel Towing: 25,000 lbs.
 Conventional Towing: 17,500 lbs.
 Payload: 9,930 lbs.
 GCWR: 33,000 lbs.
 GVWR: 16,500 lbs.
 Front GAWR: 7,500 lbs.

Equipment Configurations

Engines: 6.8L Triton® Gas V10
 6.7L Power Stroke V8 Turbo Diesel B20-capable
 Drivelines: 4x2 or 4x4 • Dual Rear Wheel only
 Bodies: Regular Cab, SuperCab, Crew Cab
 Trim Series: XL, XLT, LARIAT

F-550

Maximum Capabilities¹

5th-Wheel Towing: 31,800 lbs.
 Conventional Towing: 18,500 lbs.
 Payload: 12,730 lbs.
 GCWR: 40,000 lbs.
 GVWR: 19,500 lbs.
 Front GAWR: 7,500 lbs.

Equipment Configurations

Engines: 6.8L Triton Gas V10
 6.7L Power Stroke V8 Turbo Diesel B20-capable
 Drivelines: 4x2 or 4x4 • Dual Rear Wheel only
 Bodies: Regular Cab, SuperCab, Crew Cab
 Trim Series: XL, XLT, LARIAT

Transmission

TorqShift 6-Speed SelectShift Automatic with Tow/Haul Mode

Case Material	Aluminum	
PTO	Live-drive with stationary and mobile modes Torque output: 250 lb.-ft. for diesel; up to 250 lb.-ft. for gas Split-shaft capability (diesel engine only) PTO port located on driver's side	
Gear Ratios	1st	3.97:1
	2nd	2.31:1
	3rd	1.51:1
	4th	1.14:1
	5th	0.85:1
	6th	0.67:1
	Reverse	3.12:1

Mechanical

Front Suspension

Axle (max. rating @ ground) –
 5,250 lbs. (F-350 4x2);
 6,000 lbs. (F-350 4x4);
 7,000 lbs. (F-450/F-550)
 Shock absorbers – 1.38" gas type

Rear Suspension

Axle (max. rating @ ground) –
 7,280 lbs. (F-350 SRW);
 9,750 lbs. (F-350 DRW);
 12,000 lbs. (F-450);
 13,660 lbs. (F-550)
 Shock absorbers – 1.38" gas type

Steering

Type – Hydraulic power-assisted with recirculating ball gear and damper
 Overall ratio – Variable

Brakes

Rotor diameter (front/rear) –
 14.29"/14.29" (F-350);
 15.39"/15.74" (F-450/F-550)
 Lining area (sq. in.; front/rear) –
 50.9/39.6 (F-350);
 68.8/64.8 (F-450/F-550)

Wheels

Steel or aluminum
 Size –
 17" SRW/DRW, 18" SRW (F-350);
 19.5" (F-450/F-550)
 Number of studs –
 8 (F-350); 10 (F-450/F-550)
 Bolt-circle diameter –
 6.69" (F-350 SRW);
 7.87" (F-350 DRW);
 8.85" (F-450/F-550)

Frames

Number of Crossmembers

7 (145.3" WB); 8 (167.9" WB,
 169.3" WB, 179.8" WB);
 9 (191.9" WB, 193.3" WB,
 203.8" WB); 10 (205.3" WB)

Section Modulus²

12.7 cu. in.

Frame Rail Yield Strength

50,000 psi

Max. Side Rail Section³ (height x width x thickness)

7.50" x 2.74" x 0.28" (F-350)
 7.50" x 2.74" x 0.32" (F-450/F-550)
 145.3" WB, 169.3" WB, 167.9" WB,
 179.8" WB and 203.8" WB)
 7.50" x 2.74" x 0.60" (F-450/F-550
 169.3" WB, 191.9" WB, 193.3" WB
 and 205.3" WB; F-550 with the
 Payload Plus Upgrade Package)

XL



XL Regular Cab cloth-trimmed interior in Dark Earth Gray with XL Value Package, 40/20/40 split front seat and available equipment.

XLT

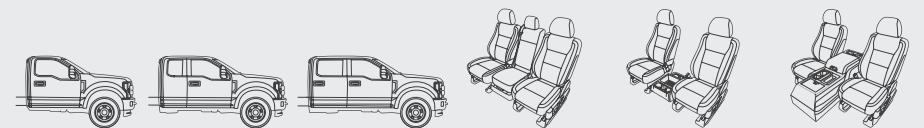


XLT SuperCab cloth-trimmed interior in Medium Earth Gray with 40/console/40 front bucket seats and available equipment.

LARIAT



LARIAT Crew Cab leather-trimmed interior in Medium Light Camel with 40/console/40 front bucket seats and available equipment.



	Regular Cab	SuperCab	Crew Cab	40/20/40 split front seat	40/mini-console/40 front bucket seats	40/console/40 front bucket seats
XL	A	A	A	S	O	
XLT	A	A	A	S		O
LARIAT		A	A	O		S

¹When properly equipped. ²Cross-sectional modulus calculated at back of cab. ³Measured to inside of metal.

BUILD YOUR SUPER DUTY® CHASSIS CAB

S : Standard O : Optional P : Package Content

XL	XLT	LARIAT	
			Mechanical
S	S	S	6.2L SOHC 2-valve Gas V8 Flex Fuel E85-capable engine (F-350)
S	S		6.8L Triton® SOHC 3-valve Gas V10 (F-450/F-550; includes hardened engine intake valves and valve seats)
O	O	5/10	6.7L Power Stroke® V8 Turbo Diesel B20-capable engine (standard on F-450/F-550 LARIAT)
S	S		Alternator – 200-amp extra-heavy-duty ¹ (6.2L gas engine)
S	S		Alternator – 220-amp extra-heavy-duty ¹ (diesel engine)
O	O	S	Alternator – 240-amp extra-extra-heavy-duty ¹ (6.2L gas engine)
S	S	S	Alternator – 240-amp heavy-duty ¹ (6.8L gas engine)
O	O	O	Alternator – Dual extra-heavy-duty, 377-amp total ¹ (diesel engine)
O	O	S	Alternator – Dual, 332-amp total ¹ (diesel engine)
O	O	O	Axle – Rear, 3.73 electronic-locking (SRW)
S	S	S	Axle – Rear, 3.73 non-limited-slip (F-350)
O	O	O	Axle – Rear, 4.10 limited-slip (DRW diesel engine)
S	S	S	Axle – Rear, 4.10 non-limited-slip (F-450/F-550 diesel engine)
O	O	O	Axle – Rear, 4.30 electronic-locking (SRW gas engine)
O	O	O	Axle – Rear, 4.30 limited-slip ¹ (F-350 DRW gas engine and F-450/F-550 diesel engine)
O	O	O	Axle – Rear, 4.88 limited-slip (F-450/F-550 gas engine)
S	S	S	Axle – Rear, 4.88 non-limited-slip (F-450/F-550 gas engine)
S			Battery – 650-CCA, 72-amp-hr, single (6.2L gas engine)
O	O	O	Battery – 750-CCA, 78-amp-hr, dual (F-350 with 6.2L gas engine)
	S	S	Battery – 750-CCA, 78-amp-hr, single ¹ (6.2L gas engine)
S	S	S	Battery – 750-CCA, 78-amp-hr, single ¹ (6.8L gas engine)
S	S	S	Battery – 750-CCA, 78-amp-hr, dual (diesel engine)
S	S	S	Drivetrain – 4x2
O	O	O	Drivetrain – 4x4
O	O	O	Engine block heater (standard where required)
O	O		Engine idle shutdown – 5-minute (diesel engine)
O	O		Engine idle shutdown – 10-minute (diesel engine)
O	O		Engine idle shutdown – 15-minute (diesel engine)
O	O		Engine idle shutdown – 20-minute (diesel engine)
O	O		Frame extension – Aft-axle (F-450/F-550 145" and 169" wheelbases)
5/10	5/10	5/10	Fuel tank – 26.5-gallon mid-ship ¹ (standard on F-350 SRW with 17" wheels)
S	S	S	Fuel tank – 40-gallon aft-of-axle
O	O		Fuel tank – Dual diesel ¹ with 40-gallon aft-of-axle and 26.5-gallon mid-ship tanks (DRW with diesel engine)
O	O	O	Jack – 2-ton mechanical (SRW)
O	O	O	Jack – 4-ton hydraulic (F-350 DRW)
O	O	O	Jack – 6-ton hydraulic (F-450/F-550)
O	O		Operator-commanded exhaust filter regeneration with active regeneration inhibit (diesel engine)
O	O	O	Power takeoff (PTO) provision – Live-drive with mobile and stationary modes; includes split-shaft capability with diesel engine only ¹

XL	XLT	LARIAT	
O	O	O	Spare wheel, tire and hydraulic jack (excludes carrier)
O	O		Speed limitation – 65-mph governed top speed (Fleet only)
O	O		Speed limitation – 75-mph governed top speed (Fleet only)
O	S	S	Trailer tow – Trailer brake controller with Smart Trailer Tow Connector
O	O	S	Transfer case – Electronic shift-on-the-fly (ESOF) ¹ (4x4)
S	S		Transfer case – Manual (4x4)
O	O	O	Upfitter interface module
S	O		Wheels – 17" argent-painted steel with painted center cap (SRW; optional on XLT for Fleet only)
S	S		Wheels – 17" argent-painted steel without center cap (F-350 DRW)
O	S		Wheels – 17" cast-aluminum with bright center cap (SRW)
O	O	S	Wheels – 17" polished forged-aluminum with bright center cap (F-350 DRW)
		O	Wheels – 18" argent-painted steel with painted center cap (SRW)
		O	Wheels – 18" cast-aluminum with bright center cap (SRW)
		S	Wheels – 18" bright-machined cast-aluminum with bright center cap (SRW)
S	S		Wheels – 19.5" argent-painted steel without center cap (F-450/F-550)
	O	S	Wheels – 19.5" polished forged-aluminum with bright center cap (F-450/F-550)
O	O		Wheels – Stainless steel covers, front and rear ¹ (DRW)
S	S		Tires – LT245/75R17E BSW all-season (SRW 4x2)
S	S	S	Tires – LT245/75R17E BSW all-season (F-350 DRW 4x2)
S	S	S	Tires – LT245/75R17E BSW all-season plus (F-350 DRW 4x4)
S	S		Tires – LT245/75R17E BSW all-season plus (SRW 4x4)
O	O		Tires – LT245/75R17E BSW all-terrain (SRW)
O	O	O	Tires – LT245/75R17E BSW all-terrain (F-350 DRW)
O	O	O	Tires – LT245/75R17 OWL all-terrain (F-350 DRW)
O	O		Tires – LT265/70R17E OWL all-terrain (SRW)
O	O	S	Tires – LT275/65R18E BSW all-season ¹ (SRW)
O	O	O	Tires – LT275/70R18E BSW all-terrain plus (SRW 4x4)
	O	O	Tires – LT275/70R18E OWL all-terrain (SRW 4x4)
S	S	S	Tires – 225/70R19.5G BSW all-season (F-450/F-550)
O	O	O	Tires – 225/70R19.5G BSW traction (F-450/F-550; includes 2 all-season tires on front and 4 traction tires on rear)
O	O	O	Tires – 225/70R19.5G BSW max. traction (F-450/F-550 4x4; includes 2 traction tires on front and 4 traction tires on rear)
			Driver-Assist Technology
O	S		SYNC® Voice Recognition Communications and Entertainment System with 4.2" center stack screen, 911 Assist®, AppLink® and 1 smart-charging USB port ¹
O	S	S	SYNC 3 Enhanced Voice Recognition Communications and Entertainment System with 8" color LCD capacitive touchscreen in center stack with swiping capability, 911 Assist, AppLink and 2 smart-charging USB ports ¹

XL	XLT	LARIAT	
			Seating
S			2-way adjustable driver and right-front-passenger head restraints
S	S		4-way adjustable driver and right-front-passenger head restraints
S			Front – Heavy-duty vinyl 40/20/40 split seat with 2-way manual seat adjust, driver's side manual lumbar, and folding armrest with cupholders and storage
O			Front – Cloth 40/20/40 split seat with 2-way manual seat adjust, driver's side manual lumbar, and folding armrest with cupholders and storage
O			Front – Heavy-duty vinyl bucket seats with mini-console and driver's side manual lumbar (Regular Cab only)
O			Front – Cloth bucket seats with mini-console and driver's side manual lumbar
S			Front – Cloth 40/20/40 split seat, center under-seat lockable storage with 12-volt powerpoint, 2-way manual seat adjust, driver's side manual lumbar, and folding armrest with cupholders and storage
O			Front – Cloth bucket seats with 8-way power driver seat, 2-way manual passenger seat, driver's side manual lumbar, and flow-through center console with lockable storage and 2 rear-facing powerpoints ¹ (SuperCab and Crew Cab only)
S			Front – Leather-trimmed heated and cooled 10-way power bucket seats and flow-through center console with lockable storage and 2 rear-facing powerpoints
O			Front – Leather-trimmed heated and cooled 10-way power 40/20/40 split seat, center under-seat lockable storage with 12-volt powerpoint, and folding armrest with cupholders and storage
S			Rear – Heavy-duty vinyl
O	S		Rear – Cloth
	S		Rear – Premium vinyl (SuperCab)
	S		Rear – Leather-trimmed (Crew Cab)
S	S		Rear – Under-seat fold-flat storage, lockable and partitionable, with 12-volt powerpoint (Crew Cab)
S	S		Rear – Under-seat storage with 12-volt powerpoint (SuperCab)
	S		Rear – Fold-down center armrest with dual integrated cupholders (Crew Cab)
	O		Rear – Heated outboard seats ¹ (Crew Cab)
			Interior
S			AM/FM stereo with 4 speakers (Regular Cab)
S			AM/FM stereo with 6 speakers (SuperCab/Crew Cab)
P	S		AM/FM stereo/single-CD player with MP3 capability and 4 speakers (Regular Cab)
P	S		AM/FM stereo/single-CD player with MP3 capability and 6 speakers (SuperCab/Crew Cab)
	S		Audio System from Sony® with AM/FM stereo/single-CD player with MP3 capability, 10 speakers and HD Radio™ Technology
O	S	S	SiriusXM® Satellite Radio with 6-month trial subscription ¹ (adds 1 speaker on XLT only)
O	O		Voice-activated Navigation System with integrated SiriusXM Traffic and Travel Link® with 5-year subscription ¹

¹Restrictions may apply. See your dealer for details.

BUILD YOUR SUPER DUTY® CHASSIS CAB

S : Standard O : Optional P : Package Content

XL	XLT	LARIAT	
			Interior (continued)
P	S	S	Accessory delay for power features
S	S		Climate control – Single-zone manual
O			Climate control – Air conditioning delete (Fleet only)
	S		Climate control – Dual-zone electronic automatic temperature control
O	O	O	Climate control – Rapid-heat supplemental cab heater ¹ (diesel engine; standard where required)
O	S	S	Cruise control (optional for Fleet only)
S			Display – 2.3" productivity screen in instrument cluster
	S		Display – 4.2" LCD productivity screen in instrument cluster ¹
	S		Display – 8" configurable color LCD productivity screen in instrument cluster
	S		Door trim – Sandalwood film appliques
O	O		Flooring – All-weather floor mats ¹ (SuperCab and Crew Cab)
S	O	O	Flooring – Black vinyl/carpet delete
	S	S	Flooring – Carpet with front and rear carpeted floor mats
P	S	S	Locks – Power with autolock/unlock
P	S	S	Locks – Remote Keyless Entry System with 2 integrated keyhead transmitter remotes
	S		Mirror – Auto-dimming rearview
S	S		Mirror – Day/night rearview
	O	S	Power-adjustable pedals (optional for Fleet only)
O	O	S	Power outlet – 110-volt/400-watt, 1 in instrument panel; also includes 1 rear-facing on the flow-through center console, if equipped ¹
O			Radio delete (Fleet only)
S	S		Steering wheel – Black urethane
	S		Steering wheel – Color-coordinated leather-wrapped
S			Visors – Adjustable driver with pocket and front-passenger with mirror
	S		Visors – Adjustable driver and front-passenger with covered mirrors
	S		Visors – Adjustable driver and front-passenger with covered and illuminated vanity mirrors
S	S		Window – Rear, fixed
O	O		Window – Rear, fixed with defroster and privacy glass
O	O	S	Window – Rear, power-sliding with defroster and privacy glass ¹ (SuperCab/Crew Cab)
S			Windows – Manual front and rear
P	S	S	Windows – Power with front one-touch-up/-down feature
			Exterior
S			Bumper – Black-painted steel
P	S	S	Bumper – Chrome
O	O	O	Cab steps – Black platform running boards
O	O		Daytime running lamps – Non-configurable (replaces standard configurable daytime running lamps; Fleet only)
S	S		Door handles – Black
	S		Door handles – Body-color
O	O		Exterior backup alarm by ECCO ^{®2}
	S		Fog lamps
O	O	O	Ford Telematics™ powered by Telogis ^{®2} – Fleet-tracking system (includes 1 year of service)

XL	XLT	LARIAT	
O	S	S	Glass – Privacy on rear doors and rear window; solar-tint on windshield and front doors ¹
S			Glass – Solar-tint
S			Grille – Black
	S		Grille – Chrome 2-bar insert with chrome surround
	S		Grille – Chrome 2-bar insert with Carbon Black surround
S	S	S	Headlamps – Dual-beam jewel-effect halogen
O	O	O	Lighting – Amber LED warning strobes with CHMSL light bar and 2 hood-mounted lights ¹
O	O	O	Lighting – Center high-mounted stop lamp (CHMSL) ¹
O	O	S	Lighting – Utility Lighting System (LED sideview mirror spotlights) ¹
S	O	S	Mirrors – Black sideview mirror caps
	S		Mirrors – Body-color sideview mirror caps
S			Mirrors – Manually telescoping trailer tow with 2-way fold and manual glass
P	S		Mirrors – Manually telescoping trailer tow with 2-way fold, power/heated glass, heated manual spotter mirrors, and integrated clearance lamps and turn signal indicators
	O	S	Mirrors – PowerScope® power-telescoping/-folding trailer tow with power/heated glass, heated manual spotter mirrors, integrated clearance lamps, turn signal indicators, high-intensity LED security approach lamps, Utility Lighting System, and driver's side auto-dimming feature
O	O	O	Rear View Camera and Prep Kit (includes loose camera, wiring bundle, and rearview mirror or center stack video display ¹)
O	O	O	Remote Start System ¹
	P	S	SecuriCode™ keyless entry keypad
O	O	O	Skid plates – Transfer case (SuperCab/Crew Cab 4x4)
O	O	O	Splash guards – Front ¹ (F-350)
			Safety & Security
O	O	S	Advanced Security Pack with inclination/intrusion sensors
O			Airbags – Front-seat side and side-curtain airbag delete ¹ (Fleet only)
O			Airbags – Right-front-passenger front, front-seat side and side-curtain airbags delete ¹ (Fleet only)
O	O	O	Individual Tire Pressure Monitoring System delete (F-350 SRW; Fleet only)
O	O	O	Inflatable rear safety belts in outboard seating positions ¹ (Crew Cab)
P	S	S	Perimeter alarm
P	S	S	SecuriLock® Passive Anti-Theft System
			Packages
O			XL Décor Group (Fleet only) includes bright center cap on each wheel (SRW only), and chrome bumper
O			XL Value Package includes a 4.2" center stack screen, AM/FM stereo/single-CD player with MP3 capability, cruise control, bright center cap on each wheel (SRW only), and chrome bumper
O			XLT Value Package includes autolock/unlock, power-adjustable pedals, 8-way power driver's seat (SuperCab/Crew Cab only), and SecuriCode™ keyless entry keypad
O			LARIAT Value Package includes easy-entry/-exit driver's seat with memory, power-adjustable pedals with memory, PowerScope® trailer tow mirrors with memory, and Remote Start System

XL	XLT	LARIAT	
O	O	O	16,000-lb. GVWR Package¹ (F-450)
O	O		Ambulance Prep Package (Fleet only; requires diesel engine) includes dual extra-heavy-duty alternators, 7,000-lb. max. front springs/GAWR rating for configuration selected, operator-commanded exhaust filter regeneration, and "wide track" axle (F-350 DRW)
O	O		Ambulance Prep Package with EPA Special Emissions (Fleet only; requires diesel engine) includes dual extra-heavy-duty alternators, 7,000-lb. max. front springs/GAWR rating for configuration selected, operator-commanded exhaust filter regeneration, "wide track" axle (F-350 DRW), and federal emissions
O	O	O	CNG/Propane Gaseous Engine Prep Package (requires 6.2L gas engine) includes hardened engine intake valves and valve seats, and bi-fuel manifold
O	O	O	Extra-Heavy-Duty Front-End Suspension Package¹ includes upgraded front axle and 7,500-lb. front springs/GAWR rating (F-450/F-550)
O	O	O	Extra-Heavy-Service Front Suspension Package¹ includes front springs upgrade (unless maximum springs have been computer-selected as included equipment)
O	O		Fire/Rescue Prep Package with EPA Special Emissions (Fleet only; requires diesel engine) includes dual extra-heavy-duty alternators, 7,000-lb. max. front springs/GAWR rating for configuration selected, operator-commanded exhaust filter regeneration, and federal emissions
O	O	O	Heavy-Service Front Suspension Package¹ includes front springs upgrade (unless maximum springs have been computer-selected as included equipment)
O	O	O	High-Capacity Trailer Tow Package¹ (F-450/F-550 with diesel engine only) includes trailer brake wiring kit, upgraded rear axle, and increased GCWR of 35,000 lbs. on F-450 and 40,000 lbs. on F-550
O	O	O	Low Deflection Package¹ (F-450/F-550) includes 2" spacer blocks (recommended for rear-biased loading)
5/0	O	O	Payload Downgrade Package¹ includes 9,800-lb. GVWR (F-350 SRW 17" wheels), 10,000-lb. GVWR (F-350 SRW 18" wheels), 15,000-lb. GVWR (F-450), 17,500-lb. GVWR (F-550)
O	O	O	Payload Plus Upgrade Package¹ (F-550) includes upgraded frame, upgraded rear axle, low-deflection/high-capacity rear springs, 14,706-lb. max. rear GAWR, and 19,500-lb. GVWR
O	O		Payload Upgrade Package¹ (F-550) includes upgraded frame, upgraded rear axle, and 19,000-lb. GVWR
O	S	S	Power Equipment Group¹ includes accessory delay for power features; manually telescoping trailer tow mirrors with 2-way fold, power/heated glass, heated manual spotter mirrors, and integrated clearance lamps and turn signal indicators; perimeter alarm; power locks with autolock/unlock; MyKey®; SecuriLock® Passive Anti-Theft System; power windows with front one-touch-up/-down feature; and Remote Keyless Entry System with 2 integrated keyhead transmitter remotes
O	O	O	Snow Plow Prep Package¹ includes computer-selected front springs for snow plow application and dual alternator (332-amp total)
O			Trailer Tow Package includes aftermarket trailer brake wiring kit (trailer brake controller not included)

¹Restrictions may apply. See your dealer for details. ²Ford Licensed Accessory.

TECHNICAL SPECIFICATIONS

Dimensions & Weights

	Regular Cab											
	F-350 SRW 4x2/4x4	F-350 DRW ¹ 4x2/4x4	F-350 DRW ¹ 4x2/4x4	F-450 DRW 4x2/4x4	F-450 DRW 4x2/4x4	F-450 DRW 4x2/4x4	F-450 DRW 4x2/4x4	F-550 DRW 4x2/4x4	F-550 DRW 4x2/4x4	F-550 DRW 4x2/4x4	F-550 DRW 4x2/4x4	
Wheelbase	145.3"	145.3"	169.3"	145.3"	169.3"	193.3"	205.3"	145.3"	169.3"	193.3"	205.3"	
Cab-to-axle	60"	60"	84"	60"	84"	108"	120"	60"	84"	108"	120"	
Exterior												
Height												
Top of cab to ground	77.9"/81.0"	78.1"/81.0"	78.0"/80.9"	81.7"/81.5"	81.5"/81.3"	81.5"/81.4"	81.3"	81.7"/81.5"	81.7"/81.5"	81.7"/81.6"	81.5"	
Top of frame to ground	32.2"/34.3"	32.3"/34.2"	32.0"/33.8"	35.0"/35.1"	34.5"/34.6"	34.4"	34.4"	35.0"/35.1"	34.4"/34.5"	34.3"	34.3"	
Width												
Between frame rails	34.1"	34.1"	34.1"	34.2"	34.2"	34.2"	34.2"	34.2"	34.2"	34.2"	34.2"	
Axle clearance	8.6"/8.5"	7.9"/7.8"	7.9"	8.2"	8.3"	8.3"	8.3"	8.2"	8.3"	8.3"	8.3"	
Front track	68.3"	69.1"	69.1"	74.8"	74.8"	74.8"	74.8"	74.8"	74.8"	74.8"	74.8"	
Rear tire outside width	79.6"	92.2"	92.2"	93.9"	93.9"	93.9"	93.9"	93.9"	93.9"	93.9"	93.9"	
Overall length	230.7"	230.7"	254.8"	230.7"	254.8"	278.8"	290.7"	230.7"	254.8"	278.8"	290.7"	
Interior (front/rear)												
Head room	40.8"/—	40.8"/—	40.8"/—	40.8"/—	40.8"/—	40.8"/—	40.8"/—	40.8"/—	40.8"/—	40.8"/—	40.8"/—	
Leg room (max.)	43.9"/—	43.9"/—	43.9"/—	43.9"/—	43.9"/—	43.9"/—	43.9"/—	43.9"/—	43.9"/—	43.9"/—	43.9"/—	
Hip room	62.5"/—	62.5"/—	62.5"/—	62.5"/—	62.5"/—	62.5"/—	62.5"/—	62.5"/—	62.5"/—	62.5"/—	62.5"/—	
Shoulder room	66.7"/—	66.7"/—	66.7"/—	66.7"/—	66.7"/—	66.7"/—	66.7"/—	66.7"/—	66.7"/—	66.7"/—	66.7"/—	
Weights (lbs.)												
Max. GVWR ²	11,100/11,500	14,000	14,000	16,500	16,500	16,500	16,500	19,500	19,500	19,500	19,500	
Max. payload ²	4,870/4,860	8,020/7,560	7,330/6,880	9,930/9,610	9,820/9,480	9,670/9,310	9,570/9,250	12,300/11,960	12,730/12,370	12,560/12,240	12,500/12,120	
	SuperCab						Crew Cab					
	F-350 SRW 4x2/4x4	F-350 DRW ¹ 4x2/4x4	F-450 DRW 4x2/4x4	F-450 DRW 4x2/4x4	F-550 DRW 4x2/4x4	F-550 DRW 4x2/4x4	F-350 SRW 4x2/4x4	F-350 DRW ¹ 4x2/4x4	F-450 DRW 4x2/4x4	F-450 DRW 4x2/4x4	F-550 DRW 4x2/4x4	F-550 DRW 4x2/4x4
Wheelbase	167.9"	167.9"	167.9"	191.9"	167.9"	191.9"	179.8"	179.8"	179.8"	203.8"	179.8"	203.8"
Cab-to-axle	60"	60"	60"	84"	60"	84"	60"	60"	60"	84"	60"	84"
Exterior												
Height												
Top of cab to ground	78.3"/81.0"	78.5"/81.2"	81.8"	81.8"/81.6"	82.0"/81.8"	81.8"	78.4"/81.2"	78.6"/81.2"	81.9"/81.8"	81.7"/81.8"	81.9"/81.8"	81.9"/81.7"
Top of frame to ground	31.9"/33.8"	32.0"/33.7"	34.6"/34.3"	34.6"/34.4"	34.5"/34.3"	34.6"/34.3"	31.7"/33.5"	31.9"/33.7"	34.4"/34.3"	34.5"/34.3"	34.4"/34.3"	34.4"/34.3"
Width												
Between frame rails	34.1"	34.1"	34.2"	34.2"	34.2"	34.2"	34.1"	34.1"	34.2"	34.2"	34.2"	34.2"
Axle clearance	8.6"	7.9"/7.8"	8.3"	8.2"	8.3"	8.2"	8.6"	7.8"	8.2"	8.2"	8.2"	8.2"
Front track	68.3"	69.1"	74.8"	74.8"	74.8"	74.8"	68.3"	69.1"	74.8"	74.8"	74.8"	74.8"
Rear tire outside width	79.6"	92.2"	93.9"	93.9"	93.9"	93.9"	79.6"	92.2"	93.9"	93.9"	93.9"	93.9"
Overall length	253.3"	253.3"	253.3"	277.4"	253.3"	277.4"	265.2"	265.2"	265.2"	289.2"	265.2"	289.2"
Interior (front/rear)												
Head room	0.8"/40.3"	40.8"/40.3"	40.8"/40.3"	40.8"/40.3"	40.8"/40.3"	40.8"/40.3"	40.8"/40.4"	40.8"/40.4"	40.8"/40.4"	40.8"/40.4"	40.8"/40.4"	40.8"/40.4"
Leg room (max.)	43.9"/33.5"	43.9"/33.5"	43.9"/33.5"	43.9"/33.5"	43.9"/33.5"	43.9"/33.5"	43.9"/43.6"	43.9"/43.6"	43.9"/43.6"	43.9"/43.6"	43.9"/43.6"	43.9"/43.6"
Hip room	62.5"/64.7"	62.5"/64.7"	62.5"/64.7"	62.5"/64.7"	62.5"/64.7"	62.5"/64.7"	62.5"/64.7"	62.5"/64.7"	62.5"/64.7"	62.5"/64.7"	62.5"/64.7"	62.5"/64.7"
Shoulder room	66.7"/65.8"	66.7"/65.8"	66.7"/65.8"	66.7"/65.8"	66.7"/65.8"	66.7"/65.8"	66.7"/65.9"	66.7"/65.9"	66.7"/65.9"	66.7"/65.9"	66.7"/65.9"	66.7"/65.9"
Weights (lbs.)												
Max. GVWR ²	11,500	14,000	16,500	16,500	19,500	19,500	11,500	14,000	16,500	16,500	19,500	19,500
Max. payload ²	4,970/4,940	7,700/7,220	9,650/9,300	9,430/9,130	12,540/12,160	12,390/12,070	4,830/4,820	7,480/7,040	9,440/9,080	9,360/9,010	12,370/11,930	12,220/11,900

SRW = single rear wheel DRW = dual rear wheel ¹Ambulance Prep Package F-350 DRW: rear tire outside width is 95.2" ²When properly equipped.

TECHNICAL SPECIFICATIONS

5th-Wheel Towing – Maximum Loaded Trailer Weight Ratings (lbs.)¹

Engine	Axle Ratio	GCWR	F-350 SRW 4x2	F-350 SRW 4x4	F-350 DRW 4x2	F-350 DRW 4x4	F-450 DRW 4x2	F-450 DRW 4x4	F-550 DRW 4x2	F-550 DRW 4x4
Regular Cab 6.2L 2-valve Gas V8 FFV	3.73	19,500	13,100	12,700	—	—	—	—	—	—
	4.30	20,000 23,000 23,500	— 16,600 —	— 16,200 —	— — 16,800	— 13,300 12,800	— — —	— — —	— — —	— — —
6.8L 3-valve Gas V10	4.88	28,000	—	—	—	—	20,700	20,400	20,700	20,400
6.7L Diesel V8	3.73	26,500 30,000	19,200	18,700	— 22,500	— 22,100	— —	— —	— —	— —
	4.10	30,000 31,000	— —	— —	— 22,500	— 22,100	— —	— —	— —	— —
	4.30	33,000 35,000 ²	— —	— —	— —	— —	23,000 25,000	22,600 24,600	23,000	22,600
	4.88	31,000 40,000 ²	— —	— —	— —	— —	— —	— —	27,000 22,800 31,800 ²	26,600 22,800 31,500 ²
SuperCab 6.2L 2-valve Gas V8 FFV	3.73	19,500	12,800	12,400	—	—	—	—	—	—
	4.30	20,000 23,000 23,500	— 16,300 —	— 15,800 —	— 13,000 16,500	— 12,500 16,000	— — —	— — —	— — —	— — —
6.8L 3-valve Gas V10	4.88	28,000	—	—	—	—	20,400	20,100	20,400	20,100
6.7L Diesel V8	3.73	26,500 30,000	18,800	18,400	— 22,200	— 21,800	— —	— —	— —	— —
	4.10	30,000 31,000	— —	— —	— 22,200	— 21,800	— —	— —	— —	— —
	4.30	33,000 35,000	— —	— —	— —	— —	22,600 24,600	22,200 24,200	22,600	22,200
	4.88	31,000 40,000 ²	— —	— —	— —	— —	— —	— —	26,600 22,500 31,500 ²	26,200 22,200 31,200 ²
Crew Cab 6.2L 2-valve Gas V8 FFV	3.73	19,500	12,600	12,200	—	—	—	—	—	—
	4.30	20,000 23,000 23,500	— 16,100 —	— 15,700 —	— 12,800 16,300	— 12,300 15,800	— — —	— — —	— — —	— — —
6.8L 3-valve Gas V10	4.88	28,000	—	—	—	—	20,200	19,900	20,200	19,900
6.7L Diesel V8	3.73	26,500 30,000	18,600	18,200	— 22,000	— 21,600	— —	— —	— —	— —
	4.10	30,000 31,000	— —	— —	— 22,000	— 21,600	— —	— —	— —	— —
	4.30	33,000 35,000	— —	— —	— —	— —	22,400 24,400	22,000 24,000	22,400	22,000
	4.88	31,000 40,000 ²	— —	— —	— —	— —	— —	— —	26,400 22,200 31,200 ²	26,000 21,900 30,900 ²

SRW = single rear wheel DRW = dual rear wheel ¹F-350 DRW/F-450/F-550 weights shown are for 145.3" wheelbase Regular Cab, 167.9" wheelbase SuperCab or 179.8" wheelbase Crew Cab models. For 169.3", 191.9", 193.3", 203.8" and 205.3" wheelbase models, weights may be somewhat less (usually not more than 200 lbs., or 400 lbs. with 205.3" wheelbase). ²Requires High-Capacity Trailer Tow Package.

Load rating represents maximum allowable weight of people, cargo and body equipment and is reduced by the weight of optional equipment.

5th-Wheel Towing Notes: Trailer weights shown assume 875 lbs.–1,000 lbs. second-unit body weight. Be sure combined weight of vehicle and trailer does not exceed listed GCWR. Trailer kingpin weight should be 15–25% of total loaded trailer weight. Make sure that the vehicle payload (reduced by option weight) will accommodate trailer kingpin weight and the weight of passengers and cargo added to the towing vehicle. The addition of trailer kingpin weight, and the weight of passengers and cargo, cannot cause vehicle weights to exceed the rear GAWR (Gross Axle Weight Rating) or GVWR (Gross Vehicle Weight Rating). These ratings can be found on the vehicle's Safety Compliance Certification Label. See your Ford Dealer for conventional trailer weights.

EXTERIOR & INTERIOR CHOICES

	XL	XLT	LARIAT
White Platinum Metallic Tri-coat ¹			5 6
Oxford White	1 2	3 4	5 6
Ingot Silver ²	1 2	3 4	5 6
White Gold ²		4	5 6
Caribou ²	1 2	3 4	5 6
Bronze Fire ²		4	5 6

	XL	XLT	LARIAT
Race Red	1 2	3 4	5 6
Ruby Red Metallic Tinted Clearcoat ¹		3 4	5 6
Blue Jeans ²	1 2	3 4	5 6
Magnetic ²	1 2	3	6
Shadow Black	1 2	3 4	5 6



White Platinum Metallic Tri-coat



Oxford White



Ingot Silver



White Gold



Caribou



Bronze Fire



Race Red



Ruby Red Metallic Tinted Clearcoat



Blue Jeans



Magnetic



Shadow Black



Dark Earth Gray Cloth

2



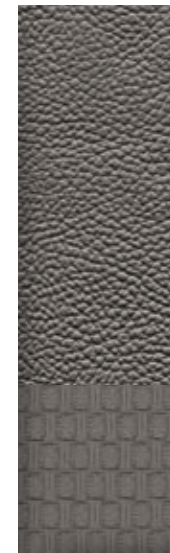
Medium Light Camel Cloth

4



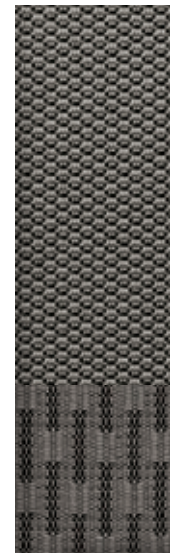
Black Leather with Perforated Inserts

6



Medium Earth Gray Vinyl

1



Medium Earth Gray Cloth

3



Medium Light Camel Leather with Perforated Inserts

5

WHEELS



17" Argent-Painted Steel
with Painted Center Cap
Standard: XL F-350 SRW
Optional: XLT F-350 SRW (Fleet Only)



18" Argent-Painted Steel
with Painted Center Cap
Optional: XL F-350 SRW



17" Cast-Aluminum
with Bright Center Cap
Optional: XL F-350 SRW
Standard: XLT F-350 SRW



18" Cast-Aluminum
with Bright Center Cap
Optional: XLT F-350 SRW



18" Bright-Machined Cast-Aluminum
with Bright Center Cap
Standard: LARIAT F-350 SRW



17" Argent-Painted Steel
Standard: XL & XLT F-350 DRW



17" Argent-Painted Steel
with Stainless Steel Covers
Optional: XL & XLT F-350 DRW



17" Polished Forged-Aluminum
with Bright Center Cap
Optional: XL & XLT F-350 DRW
Standard: LARIAT F-350 DRW



19.5" Argent-Painted Steel
Standard: XL & XLT F-450/F-550



19.5" Argent-Painted Steel
with Stainless Steel Covers
Optional: XL & XLT F-450/F-550



19.5" Polished Forged-Aluminum
with Bright Center Cap
Optional: XLT F-450/F-550
Standard: LARIAT F-450/F-550

New Vehicle Limited Warranty. We want your Ford F-Series Super Duty® Chassis Cab ownership experience to be the best it can be. Under this warranty, your new vehicle comes with 3-year/36,000-mile bumper-to-bumper coverage, 5-year/60,000-mile Powertrain Warranty coverage, 5-year/60,000-mile safety restraint coverage, and 5-year/unlimited-mile corrosion (perforation) coverage – all with no deductible. The Ford 6.7L Power Stroke® diesel engine gets 5-year/100,000-mile warranty coverage. Please ask your Ford Dealer for a copy of this limited warranty.

Roadside Assistance. Covers your vehicle for 5 years or 60,000 miles, so you have the security of knowing that help may be only a phone call away should you run out of fuel, lock yourself out of the vehicle or need towing. Your Ford Dealer can provide complete details on all of these advantages.

Business Preferred Network. Each of the select dealerships in our Business Preferred Network (BPN) is committed to providing quality commercial-oriented products and service, as well as special financing and billing arrangements, to businesses that rely on Ford products. As a BPN customer, your business vehicles receive priority service at your BPN dealership to help get your vehicle back on the road quickly.

Financial Services. Our commercial purchase plans and lines of credit offer attractive rates, negotiable terms and business-friendly options. If you prefer to lease, our CommercialLeaseSM programs offer a wide variety of package options to meet your needs. For additional information, please visit our website at fordcredit.com/comlend.

Ford Credit. Get the ride you want. Whether you plan to lease or finance, you'll find the choices that are right for you at Ford Credit. Ask your Ford Dealer for details or check us out at fordcredit.com.

Ford Protect Extended Service Plans. Whether you purchase or lease your Ford vehicle, insist on genuine Ford Protect extended service plans. Ford Protect has a variety of plans to give you peace-of-mind protection whether you want vehicle component or maintenance coverage. Plus, they are fully backed by Ford and honored at all Ford dealerships in the U.S., Canada and Mexico. When you visit your dealer, insist on genuine Ford Protect extended service plans.

Android Auto, Google, Google Play and other marks are trademarks of Google Inc. Apple, Apple CarPlay, iPhone and Siri are trademarks of Apple Inc., registered in the U.S. and other countries. "HD Radio" is a proprietary trademark of iBiquity Digital Corporation. PANDORA, the PANDORA logo, and the Pandora trade dress are trademarks or registered trademarks of Pandora Media, Inc. Used with permission. SiriusXM audio and data services each require a subscription sold separately, or as a package, by Sirius XM Radio Inc. If you decide to continue service after your trial, the subscription plan you choose will automatically renew thereafter and you will be charged according to your chosen payment method at then-current rates. Fees and taxes apply. To cancel you must call SiriusXM at 1-866-635-2349. See SiriusXM Customer Agreement for complete terms at www.siriusxm.com. All fees and programming subject to change. Trial subscriptions not available in AK and HI. Sirius, XM and all related marks and logos are trademarks of Sirius XM Radio Inc. Sony is a registered trademark of the Sony Corporation. Wi-Fi® is a registered trademark of the Wi-Fi Alliance.®

Comparisons based on competitive models (Class 3-5 Chassis Cabs based on Ford segmentation), publicly available information and Ford certification data at time of release. Vehicles may be shown with optional and aftermarket equipment. Features may be offered only in combination with other options or subject to additional ordering requirements/limitations. Dimensions and capacity ratings shown may vary due to optional features and/or production variability. Information is provided on an "as is" basis and could include technical, typographical or other errors. Ford makes no warranties, representations, or guarantees of any kind, express or implied, including but not limited to, accuracy, currency, or completeness, the operation of the information, materials, content, availability, and products. Ford reserves the right to change product specifications, pricing and equipment at any time without incurring obligations. Your Ford Dealer is the best source of the most up-to-date information on Ford vehicles. Body manufacturers are responsible for compliance certification of the completed vehicle. The Ford New Vehicle Limited Warranty and any government certification made by Ford shall cover only the vehicle as manufactured by Ford and shall not extend to any addition, modification or change of or to the vehicle by the Ford Authorized Pool Account.