

TRANSIT CONNECT

2010



TRANSIT connect

[fordvehicles.com](http://fordvehicles.com)

best in class

22 mpg city

25 mpg hwy<sup>1</sup>



introducing the all-new Ford  
**TRANSIT connect**

Transit Connect XLT Van in Silver Metallic with side- and rear-door glass and available equipment

## the right one to replace them all

If the wrong set of wheels is holding back your business, you're ready for the one-of-a-kind **Transit Connect**. This **all-new, right-sized business vehicle** combines the room and versatility of a van with the efficiency of a large car. So it can **swallow cargo, sip gas<sup>1</sup>** and **park in a tight space**, all while standing out in a crowd.

<sup>1</sup>Class is Small Van. EPA-estimated.

Vehicles throughout this catalog may be shown with optional or aftermarket equipment.

- purpose-built commercial vehicle
- conveys a professional image
- 2-seat Van/4- or 5-seat Wagon
- [fordvehicles.com/transitconnect](http://fordvehicles.com/transitconnect)

TRANSIT CONNECT

2010



just 39' curb-to-curb



Transit Connect XL Van in Silver Metallic with side- and rear-door glass and available equipment



## the right size the whole world 'round

Bred for the city, Transit Connect gets you in and out of tight spaces with **agile maneuverability**. Its low vehicle height lets you **slide into parking structures** that keep taller trucks out on the street. Plus, its economical size means that Transit Connect Van's curb weight is just 3470 lbs. – almost 1500 lbs. less than a full-size van. That's one big reason why it gets **22 mpg city/25 hwy**.<sup>1</sup> Something you'll appreciate when you pass up the pump.

<sup>1</sup>Class is Small Van. EPA-estimated.



6'8" tall



7' wide



15'1" long



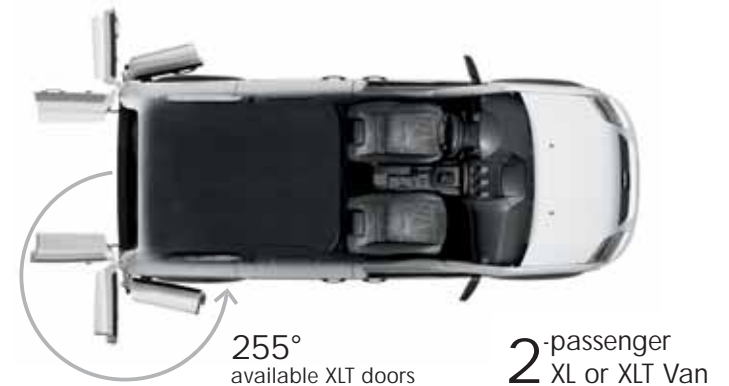
Promote your business with bodyside graphics<sup>1</sup>

Holds over **135** cu. ft. & up to **1600** lbs.<sup>2</sup>

## the right van for all kinds of cargo

The 2-seat Transit Connect Cargo Van provides a **huge cargo box** with all-around access, and near-vertical sidewalls let you make the best use of all that space. **Sliding doors on both sides** of the van let you load and unload the front half of the cargo area, or help position long items being loaded from the rear. Out back, **50/50 split rear doors** swing 180° in standard trim, or available doors on articulated hinges (shown above) swing a full 255°. Transit Connect Van offers you 3 options for side- and rear-door panels: all glass, no glass or rear glass only. Inside, a flat loadfloor plus **low side and rear liftover heights** help take the stress out of loading and unloading. Any way you look at it, Transit Connect is **wide open for business**.

<sup>1</sup>Supplied by aftermarket vendor contracted by vehicle owner or lessee. <sup>2</sup>When properly equipped. Van GVWR is 5005 lbs. Load rating represents maximum allowable weight of people, cargo and body equipment combined, and is reduced by the weight of the optional equipment.



255° available XLT doors

2-passenger XL or XLT Van

TRANSIT CONNECT **BUILT TOUGH** 2010



Transit Connect 5-passenger XLT Wagon with available equipment



4-passenger XL Wagon



5-passenger XLT Wagon



# the right wagon fits you and a crew

Choose **Transit Connect Wagon** if your business requires all hands on board. With room for 4 in XL trim, or 5 in XLT, both models feature **folding 2nd-row seats** for **ultimate versatility**. Plus, seats are designed for supportive comfort, and covered in durable cloth to help stand up to years of hard use. **AdvanceTrac® with RSC®** (Roll Stability Control™)<sup>1</sup> provides enhanced vehicle stability in a wide range of conditions. All of which makes Transit Connect Wagon one **very attractive business proposition**.

<sup>1</sup>Remember that even advanced technology cannot overcome the laws of physics. It's always possible to lose control of a vehicle due to inappropriate driver input for the conditions. For more information on AdvanceTrac with RSC, visit [fordvehicles.com](http://fordvehicles.com).

- up to **5-passenger seating**
- load up to **118 cu. ft. of cargo** behind the stowed 2nd-row seats
- load up to **78 cu. ft. of cargo** behind the 2nd-row seats



Transit Connect XLT interior with available equipment



# the right layout means work goes easily

**High style, quality materials, and plenty of storage** make a great impression. Multi-stop comfort and convenience keep you at the top of your game. Available **Nokia® Bluetooth®** connectivity helps keep you in touch with your customers.<sup>1</sup> And **standard air conditioning** lets you chill between appointments. Now, if only your office was **so comfortable**.

<sup>1</sup>Nokia Bluetooth system not available with in-dash computer and Tool Link.™

- A. Power windows, locks and heated sideview mirrors are standard on XLT Van and Wagon.
- B. When activated, the optional Reverse Sensing System works automatically when slowly backing up or parallel parking. It senses certain objects up to 6' behind your vehicle, beeping more rapidly as you get closer.
- C. Air conditioning and automatic transmission are standard.
- D. Door pockets provide ample storage.
- E. Standard overhead shelf comes with a retaining net.
- F. Dash-top compartment keeps frequently used items handy.



Transit Connect XLT Van in Frozen White with solid-panel doors and available equipment

# the right fit for everyone

*"The perfect option between a small SUV and a large commercial van."*

*"The Transit Connect is an idea outside the box – with ample room inside the box."*



*"The compactness of the Transit Connect means we can easily handle deliveries in narrow alleys and in tight city parking."*



Available interior packages designed and manufactured by Adrian Steel.

**Adrian Steel**

- Wire, Steel and Hybrid Bulkheads
- Base, Intermediate, Full and Premium Interior Packages
- Flexible Shelving
- Cargo Dividers
- Drawer Units
- Literature Holders



Available interior packages designed and manufactured by Leggett & Platt.

**Leggett & Platt**

- Wire, Steel and Solid Bulkheads
- Racks & Bins, QuietFlex® and Cargo Management Interior Packages
- Drawer Storage Cabinets
- Rooftop Ladder Racks
- Utility Carriers
- Window Security Screens



Available interior packages designed and manufactured by Sortimo.

**Sortimo**

- Wire Mesh and Solid Bulkheads
- Cargo, Basic, Intermediate and Luxury Packages
- Sowaflex Wall Cladding
- Ladder Hook and Storage Tray
- Aluminum Hose/Cable Reel

# the right upfits for your business

If there's one thing that sets Transit Connect apart, it's **versatility**. That becomes even more apparent when it's upfitted with durable bulkhead partitions and **flexible interior storage systems**. Contact your dealer for these aftermarket upfits and more to fulfill your needs. When your Transit Connect is tailored to you, you're more productive, and that's good business.

Ship-through upfits shown are installed by Dejana Equipment Company or Commercial Van Interiors.





# the right tech enables your mobile office

Ford Work Solutions™<sup>1</sup> puts **full-function computing, telephone,<sup>2</sup> Internet<sup>2</sup> and navigation capability** right in your Transit Connect. The available Crew Chief™ service<sup>3</sup> by Microlise™ and Tool Link™ system by DeWALT® can also help you run your business remotely, track your tools and vehicles, even combat downtime and monitor fleet performance for top efficiency. Ford Work Solutions components are optional. Visit [fordworksolutions.com](http://fordworksolutions.com) for an in-depth look.

- A. The in-dash Windows® CE computer is engineered for rugged service. It's your command center for Internet access, hands-free telephone and more.
- B. Generate work orders and more with the available wireless printer.
- C. Turn-by-turn Garmin® navigation is included with the in-dash computer.
- D. Ford Work Solutions Tool Link system by DeWALT uses Radio Frequency Identification (RFID) technology to track your tools.<sup>4</sup> Scan the truck before you leave for a job to make sure you have what you need, then scan again at the end of the workday to see that all your gear is on board.
- E. The in-dash computing system also includes a wireless keyboard with integrated touch pad.

<sup>1</sup>Ford Work Solutions include Ford Licensed Accessories. See dealer for limited warranty details. To avoid distractions, some functions are disabled while vehicle is in motion. <sup>2</sup>Sprint subscription and 1-year agreement required. <sup>3</sup>Service offered by Microlise. Fee required. <sup>4</sup>Tool Link system cannot read tagged items stored in metal tool boxes.



# 2010 **TRANSIT CONNECT**



Transit Connect XLT Van in Frozen White with side- and rear-door glass and available equipment

## the right choice delivers protection and reliability

The all-new **Transit Connect** is engineered and tested to thrive in conditions that are harder, faster and tougher than most of its drivers will ever see. It's Built Ford Tough® on a rugged, **commercial vehicle platform**, with over 600,000 sold worldwide since 2003. **Regular maintenance is simple**, and the first spark plug change isn't due until 90,000 miles.<sup>1</sup> Commercial customers can take advantage of outstanding support from our **Business Preferred Network** – top Ford Dealers who offer special services designed for businesses like yours.

<sup>1</sup>Under normal driving conditions with routine fluid and filter changes.

### AdvanceTrac® with RSC® (Roll Stability Control™)

is standard equipment on Transit Connect Wagon; optional on Transit Connect Van. AdvanceTrac with RSC is the only electronic stability control system with a vehicle-roll motion sensor that measures the roll rate 100 times a second. Working with the Anti-lock Brake System, traction control and yaw control, the system automatically determines how to apply individual brakes and modify engine power to help keep all 4 wheels firmly planted.<sup>2</sup>

<sup>2</sup>Remember that even advanced technology cannot overcome the laws of physics. It's always possible to lose control of a vehicle due to inappropriate driver input for the conditions. For more information on AdvanceTrac with RSC, visit [fordvehicles.com](http://fordvehicles.com).



Transit Connect is certified to Ford Light Commercial Vehicle Durability Standards – with testing to 150,000 customer-equivalent miles.

All doors and accompanying hardware are tested for functionality and durability over a cycle of door opening and slamming equal to 205 TIMES A DAY FOR 2 YEARS.

Parts vibration testing, simulating the worst roads, helps ensure solid, reliable performance and long parts life.

Prolonged exposure to extreme temperatures across 55 countries has proven Transit Connect's reliability in varying climates.

Testing affirms Ford Light Commercial Vehicle Durability Standards for wheels, tires, suspension knuckles, springs, shock absorbers, and underbody structure when taking on potholes and curbs.

# custom accessories

**Also available:**

- Carpeted Floor Mats
- Vehicle Security System
- Side Window Deflectors
- Bi-Directional Remote Start System
- Remote Start Systems
- Removable Crossbars
- Large Size Soft Cargo Organizer
- Cooler Bag (used w/Cargo Organizer)
- Wiper Shaker<sup>2</sup>
- Smart Alert<sup>TM2</sup>

<sup>1</sup>Available only on XLT.  
<sup>2</sup>Ford Licensed Accessories.



Electrochromic Mirror w/Outside Temperature and Compass



Standard Size Soft Cargo Organizer



Rear Window Grilles



Front Hood Deflector



Keyless Entry Keypad<sup>1</sup>



All-Weather Floor Mats

To learn more about Ford Accessories or to buy them online, visit [fordaccessories.com](http://fordaccessories.com).

Genuine Ford Accessories will be warranted for whichever provides you the greatest benefit: 12 months or 12,000 miles (whichever occurs first), or the remainder of your Bumper-to-Bumper 3-year/36,000-mile New Vehicle Limited Warranty. Contact your local Ford Dealer for details and a copy of the limited warranty. Ford Licensed Accessories (FLA) are warranted by the accessory manufacturer's warranty. Contact your Ford Dealer for details regarding the manufacturer's limited warranty and/or a copy of the FLA product limited warranty offered by the accessory manufacturer.



Garmin® nüvi™ Portable Navigation System<sup>2</sup>



Splash Guards



Roof Crossbars



# Specs



## DIMENSIONS & CAPACITIES

### Exterior (in.)

Front track	59.3
Overall width with mirrors	83.2
Rear door opening height	52.1
Rear door opening width at floor	50.2
Rear track	61.1
Side door opening width	32.1
Side door opening height	46.9
Overall height (at curb weight)	79.3
Ground clearance	7.9
Loadfloor height (at curb weight)	23.1
Wheelbase	114.6
Overall length	180.7
Turning diameter (ft.: curb-to-curb)	39.0

### Cargo Area (in.)

Maximum cargo length at floor	81.0
Floor width at wheelhouse	48.1
Maximum cargo height	59.1
Maximum cargo volume (cu. ft.)	135.3

### Capability (lbs.)

Cargo Van GVWR	5005
Wagon GVWR	4965
Maximum payload	1600

### Passenger Area (in.)

#### 1st row

Head room	51.1
Shoulder room	54.4
Hip room	50.8
Leg room	40.5

#### 2nd row (Wagon)

Head room	50.5
Shoulder room	59.6
Hip room	59.8
Leg room	38.5

### Passenger Volume (cu. ft.)

Cargo Van	65.1
Wagon	132.1

Cargo and load capacity limited by weight and weight distribution.

## STANDARD

### Mechanical

2.0L DOHC Duratec® I-4 engine with 136 hp and 128 lb.-ft. of torque
4-speed automatic transmission with overdrive
15.4-gallon fuel tank capacity
150-amp alternator
500 Cold Cranking Amps, 50-amp-hr maintenance-free battery
90,000-mile spark plug change interval <sup>1</sup>
Front-wheel drive (FWD)
Power front disc/rear drum brakes with Anti-lock Brake System (ABS)
Rack-and-pinion steering
Single-note horn
Suspension – Front: independent Macpherson-strut with stabilizer bar; rear: multileaf spring with stabilizer bar

### Safety & Security

Driver and front-passenger front airbags <sup>2</sup>
Front-seat side airbags <sup>2</sup>
Collapsible steering column
Tire Pressure Monitoring System (excludes spare)

### Interior

12V single front power point (XLT includes additional 12V rear power point)
Carpeted floor covering in front; vinyl in 2nd row and rear cargo area
Center console with 2 cupholders, 2 stowage bins, 1 additional folding cupholder, and audio input jack
Day/night rearview mirror (Van requires rear glass)
Dome lighting (front, middle and rear)
Driver sun visor with note strap; passenger sun visor with mirror
Front overhead storage shelf with net
Instrument panel with speedometer, tachometer, fuel gauge, engine coolant temperature and digital clock
Manual air conditioning
Map pocket in driver and front-passenger doors
Smoker's Package includes ashcup and cigar lighter
Tilt/telescoping steering wheel

<sup>1</sup>Under normal driving conditions with routine fluid and filter changes.

<sup>2</sup>Always wear your safety belt.

## STANDARD

### Exterior

3-bar grille in Grey with locking hood latch
15" steel wheels with 6-spoke wheel covers
P205/65R15 BSW tires
180°-opening rear doors
Bodyside moldings in Grey
Door handles in Black
Dual sliding side doors (solid panels on Van; glass windows on Wagon)
Full-size spare tire
Locking fuel-filler door
Rear fog lamps
Wheel-lip moldings in Grey
Windshield wipers – Front variable-speed; rear 2-speed (included on Vans when equipped with rear glass)

### Wagon includes Van content, plus:

2nd-row seating (XL 2-passenger)
AdvanceTrac® with RSC® (Roll Stability Control™) <sup>3</sup>
Dual sliding side doors with fixed-glass windows

<sup>3</sup>Remember that even advanced technology cannot overcome the laws of physics. It's always possible to lose control of a vehicle due to inappropriate driver input for the conditions. For more information on AdvanceTrac with RSC, visit [fordvehicles.com](http://fordvehicles.com).

**New Vehicle Limited Warranty.** We want your Ford Transit Connect ownership experience to be the best it can be. So under this warranty, your new vehicle comes with 3-year/36,000-mile Bumper-to-Bumper Coverage, 5-year/60,000-mile Powertrain Warranty Coverage, 5-year/50,000-mile Safety Restraint Coverage, and 5-year/unlimited-mile Corrosion (Perforation) Coverage – all with no deductible. Please ask your Ford Dealer for a copy of this limited warranty.

**Business Preferred Network.** Each of the select dealerships in our Business Preferred Network (BPN) is committed to providing quality commercial-oriented products, as well as special financing and billing arrangements, to businesses that rely on Ford products. As a BPN customer, your business vehicles receive priority service at your BPN dealership, to help get your vehicle back on the road quickly.

**Extended Service Plan.** For a purchase or lease, the Ford Extended Service Plan (ESP) offers "Peace-of-Mind" protection designed to cover key vehicle components and helps protect you from the cost of unexpected repairs. Ask your dealer for an ESP, the only service contract backed exclusively by Ford and honored at all Ford dealerships.

**Commercial Lending Services.** Our commercial purchase plans and lines of credit offer attractive rates, negotiable terms and business-friendly options. If you prefer to lease, our CommercialLease<sup>SM</sup> programs offer a wide variety of package options to meet your needs. For additional information, please visit our website at [fordcredit.com/comlend](http://fordcredit.com/comlend).

# Specs



## FEATURES & OPTIONS

XL VAN			
XLT VAN			
XL WAGON			
XLT WAGON			
○	○	●	●
<b>Mechanical</b>			
			AdvanceTrac® with RSC® (Roll Stability Control™) <sup>1</sup>
●			Electronic Passive Anti-Theft System (EPATS)
○	○	○	○
Engine block heater			
○			
Remote start			
<b>Seating</b>			
●	●	●	●
Manual 6-way-adjustable cloth driver seat (fore/aft/up/down/recline, plus lumbar) with armrest and map pocket behind seat			
●	●	●	●
Manual 4-way-adjustable cloth passenger seat (fore/aft/recline)			
		●	
2nd-row manual forward-folding 2-passenger cloth seat			
			●
2nd-row manual 60/40 split-folding 3-passenger cloth seat			
<b>Interior</b>			
●		●	
AM/FM stereo with 2 speakers			
	●		●
AM/FM stereo with single-CD, audio input jack and 2 speakers			
○	○	○	○
All-weather floor mats (front)			
		○	○
All-weather floor mats (front and rear)			
○	○	○	○
Premium carpeted floor mats (front)			
		○	○
Premium carpeted floor mats (front and rear-center position)			
	●		●
Cruise control			
	●		●
Defroster Package includes rear defroster (when equipped with rear windows on Van) and heated sideview mirrors			
	●		●
Dual front map lights			
●		●	
Front manual windows			
	●		●
Front power windows			
●		●	
Manual door locks			
	●		●
Power door locks			
	○		○
Nokia® Bluetooth® system (not available with in-dash computer and Tool Link™)			
	●		●
Power Equipment Group includes power windows, door locks, sideview mirrors and remote keyless entry with 2 key fobs			

XL VAN			
XLT VAN			
XL WAGON			
XLT WAGON			
	○		○
<b>Exterior</b>			
			255°-opening rear doors
●		●	
Black, manually adjustable, flat-folding sideview mirrors			
	●		●
Black, power-adjustable, heated sideview mirrors with manual flat-folding			
○	○		
Cargo Van rear-door privacy glass			
○	○	●	●
Cargo Van side- and rear-door privacy glass			
○	○	○	○
Daytime running lamps			
●		●	
Front and rear molded-in-Grey bumpers			
	●		●
Front and rear body-color bumpers			
	○		○
Reverse Sensing System			
○	○	○	○
Splash guards			
<b>Ford Work Solutions™</b>			
○	○	○	○
Crew Chief™ (not available with in-dash computer)			
○	○	○	○
In-dash Windows® CE computer with touch screen (not available with Crew Chief)			
○	○		
Tool Link™ (requires in-dash computer; not available with Cargo Van with side- and rear-door glass)			

● Standard ○ Optional

<sup>1</sup>Remember that even advanced technology cannot overcome the laws of physics. It's always possible to lose control of a vehicle due to inappropriate driver input for the conditions. For more information on AdvanceTrac with RSC, visit [fordvehicles.com](http://fordvehicles.com).

Windows is a registered trademark of Microsoft Corporation.

DeWALT is a registered trademark of DeWALT Industrial Tool Company used under license.

Garmin is a registered trademark of Garmin Ltd.

Microlise Group Limited is a company registered in England and Wales with company number 1670983.

©2009 Sprint. Sprint and the logo are trademarks of Sprint. Sprint Mobile Broadband Network reaches over 249 million people. Coverage not available everywhere. See [Sprint.com/coverage](http://Sprint.com/coverage) for details.

The Bluetooth word mark is a trademark of the Bluetooth SIG, Inc.

Comparisons based on 2009 competitive models (Small Van), publicly available information and Ford certification data at time of release. Some features discussed may be optional. Vehicles shown may contain optional equipment. Features shown may be offered only in combination with other options or subject to additional ordering requirements or limitations. Dimensions shown may vary due to optional features and/or production variability. Following release of the PDF, certain changes in standard equipment, options and the like, or product delays may have occurred which would not be included in these pages. Your Ford Dealer is the best source for up-to-date information. Ford Division reserves the right to change product specifications at any time without incurring obligations.

# exterior & interior colors



Torch Red



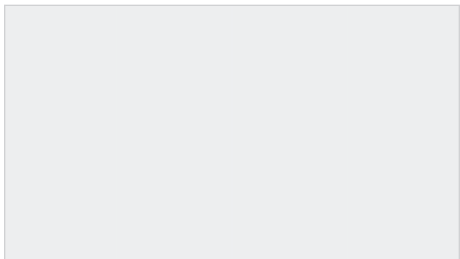
Dark Blue



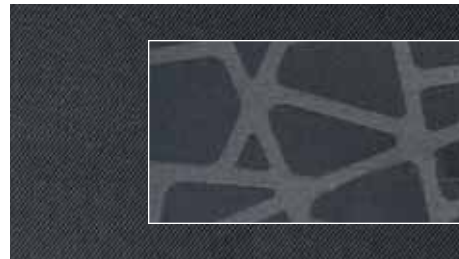
Panther Black Metallic<sup>1</sup>



Silver Metallic<sup>1</sup>



Frozen White



Cloth - Grey  
Standard

6-Spoke Wheel Cover  
Standard



<sup>1</sup>Requires side- and rear-door glass on Cargo Van.  
Colors shown are representative only. Not all colors are available on all models. See dealer for actual paint/trim options.  
Vehicles shown may contain optional equipment.

## THE FACTS ABOUT FORD.



### Quality Trucks.

**FACT:** Ford has **more trucks on the road with over 250,000 miles** than any other brand.<sup>1</sup> And Ford F-Series has been **America's best-selling line of trucks** for 32 years in a row.



### Green Trucks.

**FACT:** Ford vans and pickups achieve **best-in-class or unsurpassed fuel economy** in 3 different classes.<sup>2</sup> And Power Stroke<sup>®</sup> diesels meet stringent federal emissions standards with **Ford Clean Diesel Technology.**<sup>™</sup>



### Safe Trucks.

**FACT:** We're working to help keep you and yours safe. **AdvanceTrac<sup>®</sup> with RSC<sup>®3</sup>** is now available on more Ford Truck models than ever. And F-150's extensive safety features help make it **America's Safest Full-Size Pickup.**<sup>4</sup>



### Smart Trucks.

**FACT:** From exclusive **box-side and tailgate steps to Ford Work Solutions<sup>™</sup>** to **Ford SYNC<sup>®</sup>**, no other brand of trucks offers **more innovative** technology and productivity tools to help you get the job done.

Visit [fordvehicles.com](http://fordvehicles.com) to learn more.



<sup>1</sup>Based on vehicle registration data and latest odometer readings available to R. L. Polk & Co. for 1992 and newer model year full-size pickups and vans still on the road in the U.S. as of April 2008. <sup>2</sup>Based on F-150 EPA-estimated 15 mpg city/21 hwy., XL/XLT SuperCrew 4x2 with SFE Package. Class is non-hybrid Full-Size Pickups under 8500 lbs. GVWR; Ranger EPA-estimated 21 mpg city/26 hwy., 4x2 with 2.3L engine and 5-speed manual transmission; and Transit Connect Small Van EPA-estimated 22 mpg city/25 hwy. <sup>3</sup>Remember that even advanced technology cannot overcome the laws of physics. It's always possible to lose control of a vehicle due to inappropriate driver input for the conditions. For more information on AdvanceTrac with RSC, visit [fordvehicles.com](http://fordvehicles.com). <sup>4</sup>Based on both NHTSA 5-Star crash test ratings and IIHS Top Safety Pick. Star ratings are part of the U.S. Department of Transportation's Safercar.gov program ([www.safercar.gov](http://www.safercar.gov)).