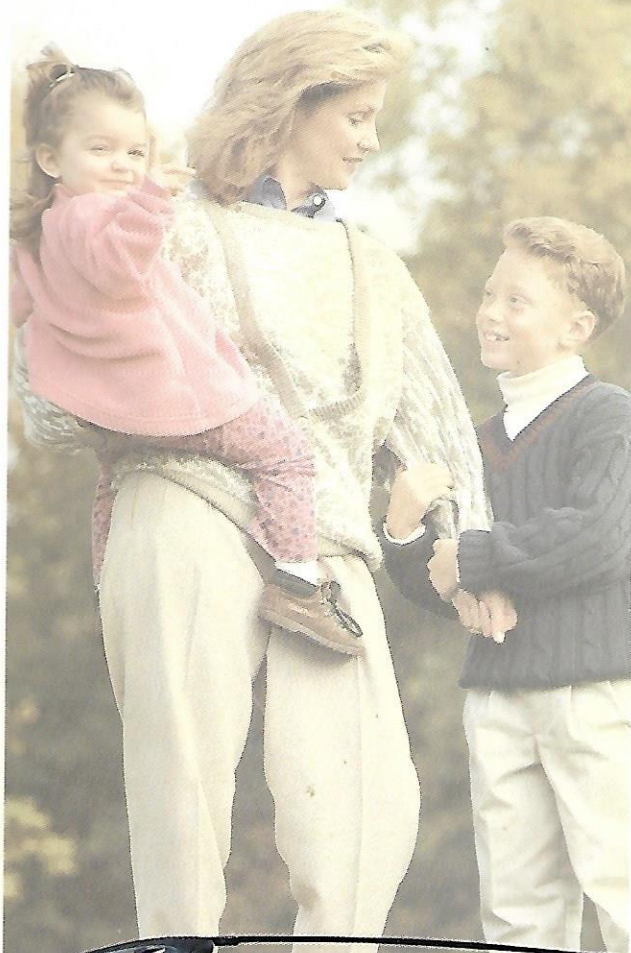




1 9 9 8

Windstar



Windstar. For the Most



Important People



Ford Windstar. It just may be the perfect vehicle.

Ford Windstar was created for the most important people in the world—you and your family. For 1998, Windstar adds the convenience of a new Family Entry System that gives you easy driver's-side access to the second-row seating. Also, Windstar has over 40 standard safety features to help protect you and your family. You expect roominess in a minivan.

What will surprise you is the responsiveness that comes from the most powerful minivan engine available. Coupled with confident handling and a smooth ride, Windstar just may be the perfect vehicle. Doesn't your family deserve it?

The new, luxurious Ford Windstar Limited in Deep Forest Green Clearcoat Metallic. Some equipment shown is optional.

The Only Minivan



Highest Frontal Crash Rating of Any Minivan

Windstar is the only minivan to earn five stars—the highest possible government frontal crash rating—for the driver and front passenger.* Windstar is engineered with over 40 standard safety features, including “accident avoidance” features such as a four-wheel anti-lock braking system, plus “occupant protection” features such as energy-absorbing crumple zones, dynamic side-impact protection and dual front air bags.† Windstar puts safety where you put your family. First.

* U.S. government data only useful in comparing vehicles within 500 pounds.
† Always wear your safety belt, and seat children in the rear seat.

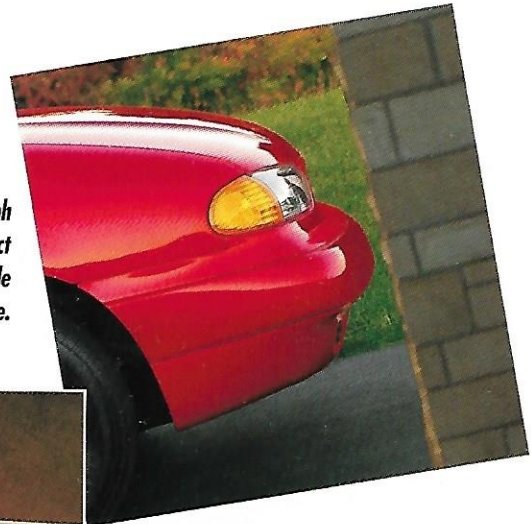


To Earn Five Stars



For your added security, a Remote Entry System is available in GL and LX, standard in Limited.

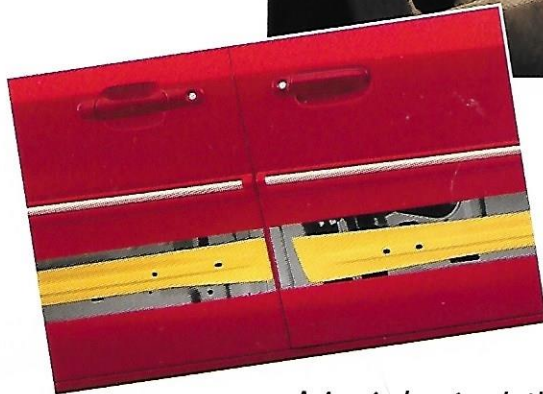
Front and rear 5-mph bumpers help protect important vehicle components from damage.



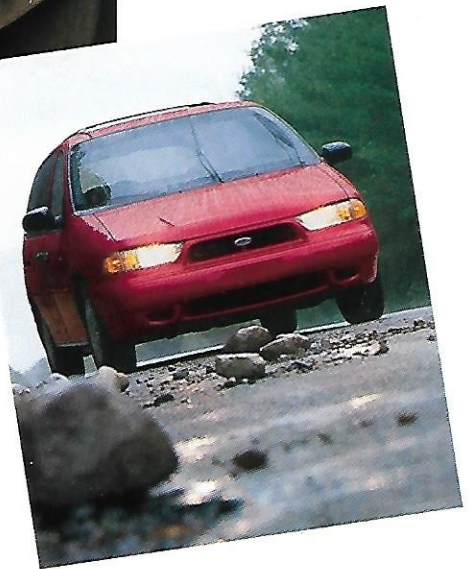
View in Windstar for '98 is this panoramic convex rearview mirror, located in the overhead console. With it the driver and front passenger can get a commanding wide-angle view of the second-row seat all the way back to the rear of the vehicle. It's available in GL and LX; standard in Limited.



Because family safety is of utmost importance in Windstar, two optional integrated child safety seats are available for all Windstar models equipped with a two-passenger, second-row bench seat.



An intrusion beam in each side door provides protection in certain side-impact collisions. Intrusion beams are important components of Windstar's solid structural design.



Standard 4-wheel anti-lock braking provides peace of mind by delivering straighter stops as well as more positive steering control under most driving conditions.



Windstar LX in two-tone Light Pine Green Clearcoat Metallic over Deep Emerald Green Clearcoat Metallic. Some equipment shown is optional.

Comfort and



The added comfort of a rear high-capacity air conditioner and auxiliary heater is available with Windstar GL and LX and standard with Limited.



Front, middle and rear seats include the comfort and protection of head restraints.

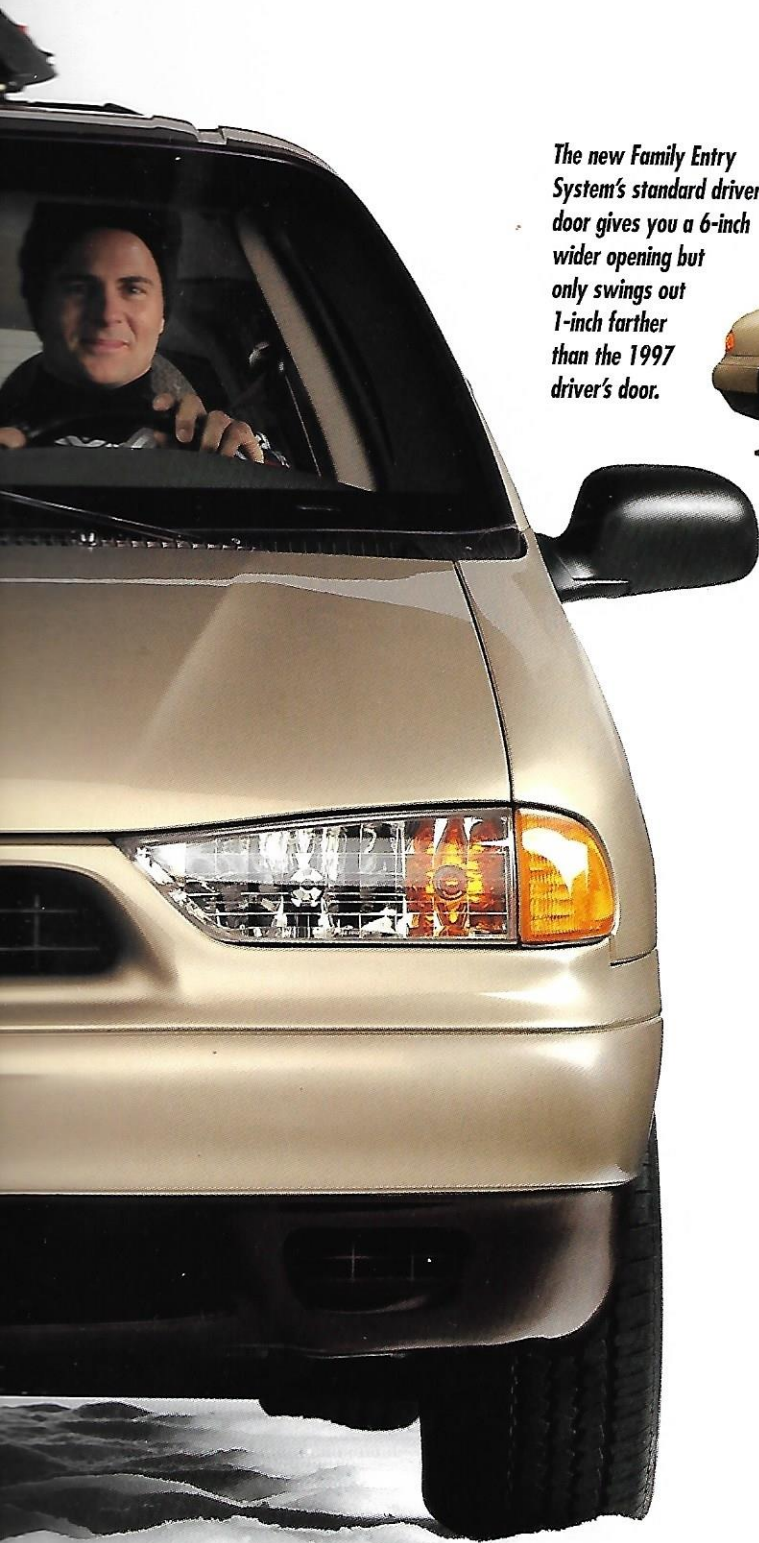


All Windstars come with a side door light to help make nighttime entry or exit more convenient.



Windstar LX in two-tone Light Prairie Tan Clearcoat Metallic over Midnight Red Clearcoat Metallic, shown with the Ford-authorized ski rack by Yakima®

Convenience



The new Family Entry System's standard driver's door gives you a 6-inch wider opening but only swings out 1-inch farther than the 1997 driver's door.



The tip/slide driver's seat, also part of the new Family Entry System, is available in Windstar 3.0L and GL and standard in LX and Limited. The seat back tips forward, and the seat base slides forward; the seat returns to the original position.



The tip/slide driver's seat makes it easier to load and unload groceries...



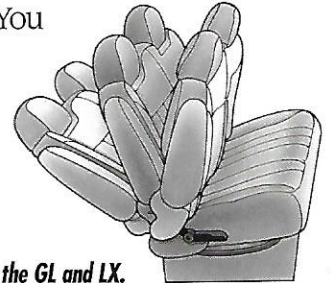
...and makes getting into and out of the second-row seating area more convenient.

The new Family Entry System is designed to make the daily routines of family life easier.

7-Passenger



Traveling is a routine part of everyday family life: trips back and forth to school, sporting events, and the grocery store. You need a vehicle that helps make the routines of daily life less hectic, more pleasurable. The answer? The 7-passenger Ford Windstar. Perfect.



The second-row bench seat back reclines in the GL and LX.



Windstar Limited features quad captain's chairs plus a 3-passenger bench seat with adjustable seat track. Leather seating surfaces are standard.

Some equipment shown is optional.

er Room



Versatility



Ford Windstar's outstanding versatility provides a variety of seating configurations, so you can arrange the interior to meet your exact people- and cargo-carrying needs. Remove the rear bench seats to take advantage of Windstar's generous 142.1 cu. ft. of cargo space, or fold the seat backs for a flat load surface.

The rear liftgate opens wide, and its two latches are on the sides so they don't interfere with cargo loading. The maximum usable space behind the third-row bench seat can be attained by using the sliding seat track (included in GL, LX and Limited).

Windstar Limited provides this very handy storage drawer under the front passenger seat.



Most Powerful Minivan

Windstar offers two sophisticated and responsive V6s. The 3.0-liter V6 is standard in the 3.0L Windstar and Windstar GL. The 200-hp 3.8-liter SPI (split port induction) has two intake ports per cylinder and delivers more power than any other minivan. Both V6 engines feature sequential electronic fuel injection for precise metering to each cylinder; plus EEC-V, the latest evolution of Ford's electronic engine control computer. Based on sophisticated Formula One and Indy racing technology, EEC-V can perform thousands of complex calculations every second to optimize Windstar's performance, reliability, fuel economy* and emissions control.

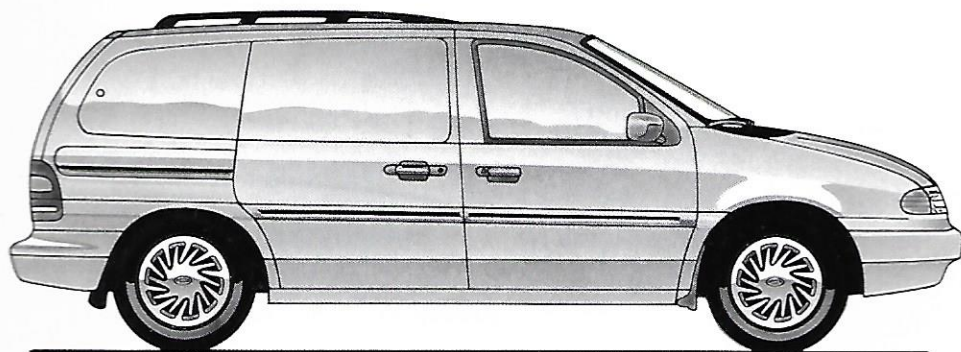
*Mileage estimates were unavailable at the time of printing. Consult your Ford Dealer for current mileage information.



Windstar's performance puts you in control with reliable power on demand. The 3.0-liter and 3.8-liter V6 engines have many advanced design features, including a 100,000-mile scheduled tune-up interval (under normal driving conditions with routine fluid/filter changes).



Specifications



SPECIFICATIONS

Drivetrain:	Front-wheel drive
Engine type:	3.0-liter V6 3.8-liter SPI V6 std. with LX and Limited; available with GL
Induction system:	Sequential electronic fuel injection with EEC-V
Compression ratio:	9.3:1
Horsepower, SAE net:	3.0L: 150 @ 5,000 rpm 3.8L SPI: 200 @ 5,000 rpm
Torque, SAE net:	3.0L: 172 lbs.-ft. @ 3,300 rpm 3.8L SPI: 225 lbs.-ft. @ 3,000 rpm
Tune-up interval:	100,000 miles
Battery:	58 AH maintenance-free; 72 AH with LX*
Alternator:	130 amps
Frame:	Fully integrated welded steel
Transaxle:	Electronic 4-speed automatic overdrive
Front suspension:	MacPherson struts with stabilizer bar and gas-pressurized hydraulic shock absorbers
Rear suspension:	Twist-beam rear axle with variable-rate coil springs and gas-pressurized hydraulic shock absorbers
Steering:	Rack-and-pinion, power assisted
Brakes:	Power front discs/rear drums with 4-wheel anti-lock system
Fuel tank:	20 gallons std. with 3.0L and GL 25 gallons std. with LX and Limited; opt. with GL
Wheels (type/size):	15" steel std. with 3.0L and GL 15" cast aluminum std. with LX; opt. with GL 16" polished cast aluminum std. with Limited
Tires:	P205/70R15SL BSW all-season std. with 3.0L and GL P215/70R15SL BSW all-season std. with LX; opt. with GL; included with auxiliary air, trailer towing package, 25-gallon fuel tank and 15" cast aluminum wheels P215/70R15SL BSW all-season (self-sealing) opt. with GL and LX P225/60R16SL BSW all-season std. with Limited

*78 AH with trailer towing package. 72 AH with auxiliary air conditioning.

DIMENSIONS

Wheelbase	120.7"
Overall length	201.2"
Overall width	74.7"
Overall height	65.6"
Front tread	64.3"
Rear tread	63.0"
Front compartment	
Head room	39.3"
Leg room (maximum)	40.7"
Rear compartment	
Second-row head room	38.9"
Second-row leg room	39.2"
Third-row head room	38.1"
Third-row leg room	35.4"
Maximum cargo volume (rear seats removed, cu. ft.)	142.1
Maximum cargo volume (third-row seat removed, cu. ft.)	50.3
Maximum cargo volume behind third-row seat (cu. ft.)	20.6
Maximum seating capacity	7.0

Equipment

	3.0L 470A	GL 472A	GL 473A	LX 477A	Limited 479A
EXTERIOR					
Family Entry System extended driver's door and right-hand sliding side door with concealed drip rail system	S	S	S	S	S
Dual sail-mounted mirrors (right-hand convex)	S	S	S	—	—
Electric remote dual sail-mounted mirrors (right-hand convex)	P	P	P	S	S
Luggage rack	—	0	P	P	P
Bodyside moldings	—	P	P	S	S
Stone abrasion protection on rocker panels with front and rear stone cuffs	S	S	S	S	S
Solar tinted glass all around	S	S	S	S	S
Privacy glass	—	0	P	P	P
Two-tone paint (may be deleted for credit)	—	—	—	P	—
Flip-open rear quarter windows (power with Power Convenience Group)	S	S	S	S	S
Front fog lamps	—	—	—	0	S
15" sport wheel covers	S	S	S	—	—
15" cast aluminum wheels	—	0	0	S	—
16" polished cast aluminum wheels	—	—	—	—	S

	3.0L 470A	GL 472A	GL 473A	LX 477A	Limited 479A
COMFORT/CONVENIENCE					
Air conditioning	P	P	P	S	S
High-capacity rear air conditioner and auxiliary heater	—	0	P	P	S
Locking glove compartment	S	S	S	S	S
Second-row left-hand storage bin	S	S	S	S	S
Light Group: Includes front map/dome lamp, glove compartment lamp, second-row left-hand side rail lamps (plus third-row in Limited) and two under-instrument panel lamps	0	0	P	S	S
Premium Light Group: Includes front fog lamps, automatic on/off headlamps, and electrochromic (auto-dim) mirrors	—	—	—	0	S
Interior Convenience Group: Includes covered left-hand rear storage bin, covered center bin and cargo net	—	0	0	S	S
Tachometer and speed control indicator (included with optional 3.8-liter V6 in GL)	—	—	—	S	S
Floor console	—	0	0	0	0
Overhead console	—	0	P	P	S
Puddle lights	—	—	—	S	S
Day/night rearview mirror	S	S	S	S	—
Front and rear cup holders	S	S	S	S	S
Front and rear floor mats (dealer-installed)	0	0	0	P	P
Leather-wrapped tilt steering wheel	—	—	—	S	S
Dual overhead visor mirrors	S	S	S	—	—
Dual illuminated visor mirrors	—	—	—	S	S
Height-adjustable lap/shoulder safety belts	S	S	S	S	S

	3.0L 470A	GL 472A	GL 473A	LX 477A	Limited 479A
SEATING					
7-passenger seating	S	S	S	S	S
Dual high-back front buckets with integral head restraints	S	—	—	—	—
Dual high-back front buckets with integral head restraints, full 7" fore/aft adjustment and adjustable recliners	—	S	S	—	—
Dual low-back front buckets with adjustable head restraints, 6-way power tip/slide driver's seat and power lumbar support for driver, and passenger seat back map pocket	—	—	—	S	—
Quad low-back front buckets with leather seating surfaces, adjustable head restraints, 6-way power tip/slide driver's seat, power lumbar support for driver (passenger side also in Limited), and passenger seat back map pockets (cloth included in LX; leather trim optional)	—	—	—	P	S

	3.0L 470A	GL 472A	GL 473A	LX 477A	Limited 479A
2- and 3-passenger cloth rear benches with forward-folding seat back and quick release for easy removal (third-row seat only in Limited)	S	S	S	S	S
Third-row adjustable seat track (7" fore/aft)	—	S	S	S	S
High-back buckets with second- and third-row seat/bed	—	0	0	—	—
Quad captain's chairs and third-row bench seat	—	—	0	—	—
Family Entry System tip/slide driver's seat	0	P	P	S	S

	3.0L 470A	GL 472A	GL 473A	LX 477A	Limited 479A
SAFETY/SECURITY					
Driver and front passenger supplemental air bags	S	S	S	S	S
Front 3-point lap/shoulder belts; rear 3-point lap/shoulder belts for outboard passengers; lap belt for center rear	S	S	S	S	S
Head restraints on front, middle and rear seats	S	S	S	S	S
Integrated child safety seats (in second row)	0	0	0	0	—
Childproof lock on sliding side door	S	S	S	S	S
Security Group: Includes programmable transmitter and perimeter anti-theft system	—	—	—	0	0
Remote Entry System: Locks/unlocks all doors, includes panic alarm, plus horn chirp for lock confirmation when remote unlocking feature is activated	—	0	0	P	S
4-wheel anti-lock brake system	S	S	S	S	S
All-speed traction control (requires 3.8-liter V6)	—	0	0	0	0

	3.0L 470A	GL 472A	GL 473A	LX 477A	Limited 479A
FUNCTIONAL					
3.0-liter V6 engine with electronic 4-speed automatic overdrive transaxle	S	S	S	—	—
3.8-liter SPI V6 engine with electronic 4-speed automatic overdrive transaxle	—	P	P	S	S
Sound insulation package	S	S	S	S	S
Power Convenience Group: Power locks, power mirrors, power windows (includes one-touch-down power driver's window and rear quarter flip-out glass) and accessory delay feature	P	P	P	S	S
Speed control/tilt steering wheel	0	P	P	S	S
Automatic load-leveling rear air suspension	—	—	—	0	0
Interval windshield wipers with dual washer jets	S	S	S	S	S
Rear window interval wiper with washer	S	S	S	S	S
Electric rear window defroster	0	P	P	P	S
20-gallon fuel tank	S	S	S	—	—
25-gallon fuel tank	—	0	0	S	S
Trailer towing package (requires 3.8-liter V6)	—	0	0	0	0
5-mph impact bumpers front and rear	S	S	S	S	S
Locking steering column with energy-absorbing design	S	S	S	S	S

	3.0L 470A	GL 472A	GL 473A	LX 477A	Limited 479A
AUDIO					
Electronic AM/FM stereo with four premium speakers	S	S	S	—	—
Electronic AM/FM stereo cassette with four premium speakers	0	P	P	S	—
Premium electronic AM/FM stereo cassette with four premium speakers	—	—	—	0	S
Ford JBL Audio System with premium speakers and subwoofer	—	—	—	0	0
Premium AM/FM stereo/single compact disc player and four premium speakers	—	0	0	0	0
Second-row audio controls in an overhead console (with lockout features) plus mini headphone jacks	—	0	P	P	S
10-disc compact disc changer (dealer-installed; requires floor console and premium radio/cassette)	—	—	—	0	0

S = Standard. 0 = Optional. P = Included in Preferred Equipment Package.

Preferred Equipment Packages

WINDSTAR LIMITED

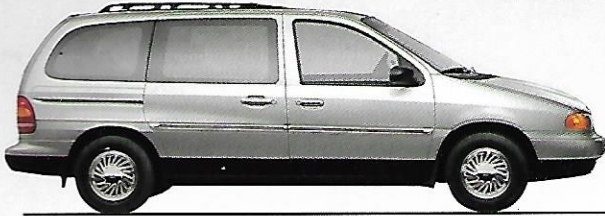


479A

The most luxurious equipped Windstar available

- Privacy glass • Luggage rack
- Unique front/rear floor mats

WINDSTAR LX



477A

- Low-back quad captain's chairs and third-row bench with adjustable seat track • Electric rear window defroster
- High-capacity air conditioning and auxiliary heater
- Overhead console • Privacy glass • Luggage rack
- Front and rear floor mats • Two-tone paint • Remote Entry System

WINDSTAR GL



473A

- Package 472A features • High-capacity air conditioning and auxiliary heater • Overhead console • Privacy glass • Light Group • Luggage rack

472A

- Tip/slide driver's seat • Electronic AM/FM stereo with cassette player and digital clock • Air conditioning • Electric rear window defroster
- Power Convenience Group • Bodyside moldings
- Speed control/tilt steering wheel • 3.8-liter SPI V6

WINDSTAR 3.0L



470A

- Air conditioning
- Power Convenience Group

WHEELS AND TIRES

	3.0L 470A	GL 472A	GL 473A	LX 477A	Limited 479A
P205/70R15SL BSW all-season tires and 15" sport wheel covers	S	S	S	-	-
P215/70R15SL BSW all-season tires and 15" argent cast aluminum wheels with bright center ornament	-	0	0	S	-
P215/70R15SL BSW all-season "self-sealing" tires and 15" argent cast aluminum wheels with bright center ornament	-	0	0	0	-
P225/60R16SL BSW all-season tires and 16" polished cast aluminum wheels	-	-	-	-	S



Full 15" sport wheel cover



15" argent cast aluminum wheel with bright center



16" polished cast aluminum wheels

Colors & Trims



Windstar 3.0L Interior Paint Colors	Interior Trim Color Graphite
Light Pine Green Clearcoat Metallic	■
Midnight Red Clearcoat Metallic	■
Light Denim Blue Clearcoat Metallic	■
Cypress Gold Frost Clearcoat Metallic	■
Vibrant White Clearcoat	■

Windstar GL and LX Interior Paint Colors	Interior Trim Colors		
	Willow Green	Graphite	Prairie Tan
Light Prairie Tan Clearcoat Metallic			■
Cypress Gold Frost Clearcoat Metallic			■
Light Pine Green Clearcoat Metallic	■	■	
Laser Red Tinted Clearcoat		■	■
Midnight Red Clearcoat Metallic		■	■
Deep Violet Clearcoat Metallic		■	■
Light Denim Blue Clearcoat Metallic		■	■
Deep Emerald Green Clearcoat Metallic	■		■
Silver Frost Clearcoat Metallic	■	■	
Vibrant White Clearcoat	■	■	■

Windstar Limited Interior Paint Colors	Interior Trim Color Prairie Tan
Cypress Gold Frost Clearcoat Metallic	■
Midnight Red Clearcoat Metallic	■
Deep Violet Clearcoat Metallic	■
Deep Forest Green Clearcoat Metallic	■

NOTE: The Windstar 3.0L, Windstar GL, LX and Limited feature a monochrome paint treatment. Windstar LX includes a two-tone treatment in the Preferred Equipment Package 477A which may be deleted for credit. See your Ford Dealer for LX two-tone paint combinations.



Ownership Experience

ROADSIDE ASSISTANCE

Every new Ford includes the assurance of a 24-hour emergency Roadside Assistance Program provided during the 3-year/36,000-mile bumper-to-bumper warranty. Ask your Ford Dealer for complete details on this program which includes such services as fuel delivery, tire change, jump start, or even help when you're locked out of your vehicle.

Ford Credit offers a wide variety of financing and leasing programs to qualified buyers which can be arranged right at the dealership. Ask your Ford Dealer for the facts on these programs.



Optional Ford Extended Service Plans go beyond the basic 3-year/36,000-mile warranty. Ask your dealer for complete details on the optional plans and for a copy of the limited warranty.



Using your Ford Citibank VISA® or MasterCard® could earn you hundreds, even thousands of dollars from Ford toward the purchase or lease of a new Ford, Lincoln or Mercury product. To apply or get more information, call 1-800-374-7777. Or visit a Ford or Lincoln-Mercury Dealer, or a branch of Citibank.

DEALER-INSTALLED ACCESSORIES

Your Ford Dealer offers a variety of quality Ford-brand accessories that meet or exceed our strict specifications.

PRODUCT CHANGES AND OPTIONS AVAILABILITY

Following publication of the catalog, certain changes in standard equipment, options, prices and the like, or product delays, may have occurred which would not be included in these pages. Your Ford Dealer is your best source for up-to-date information. Ford Division reserves the right to change product specifications at any time without incurring obligations.

Options shown or described are available at extra cost and may be offered only in combination with other options or subject to additional ordering requirements or limitations.

Visit our web site at www.ford.com



BUILDING A COMPLETE LINE-UP OF QUALITY CARS AND TRUCKS



Aspire



Explorer



Escort



Windstar



Probe



Aerostar



Mustang



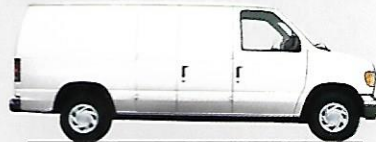
Club Wagon



Contour



Thunderbird



Econoline



Taurus



F-Series



Crown Victoria



Expedition



Ranger