

1 9 9 8



ESCORT

ZXR



GRAB

life by the wheel.



ESCORT

ZX2



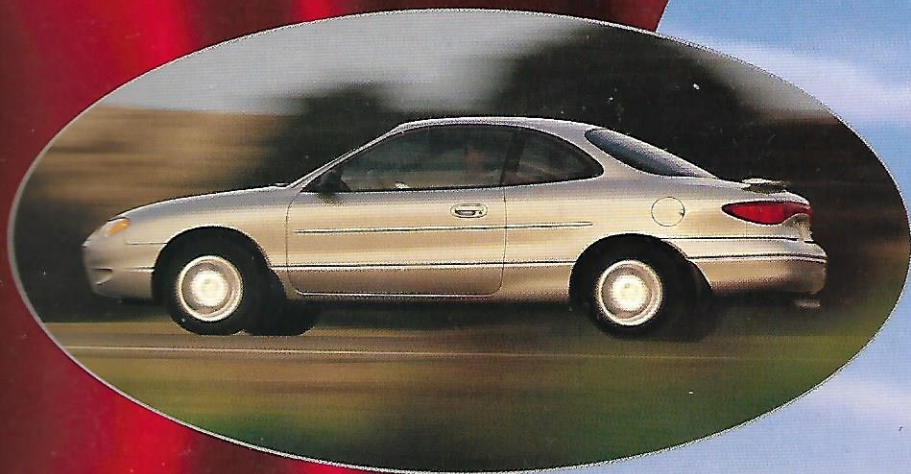
☪ The new Escort ZX2 is one fun-to-drive number, day in, night out. You can get it in "Cool" and "Hot" varieties (although the Cool one is undeniably hot and the Hot ones are inordinately cool). In a word, it's a rage. With a great look and a great attitude, Escort ZX2 is the perfect way to grab life by the wheel.

☪ Driving enjoyment that goes clear through the roof is a Hot option. It does the power slide for easy operation.



*Top: Escort ZX2 in Pacific Green Clearcoat Metallic.
Above: Escort ZX2 in Denim Blue Clearcoat Metallic. Both
shown with Hot Package 328A and the optional Sport Package.*

APTITUDE & Attitude

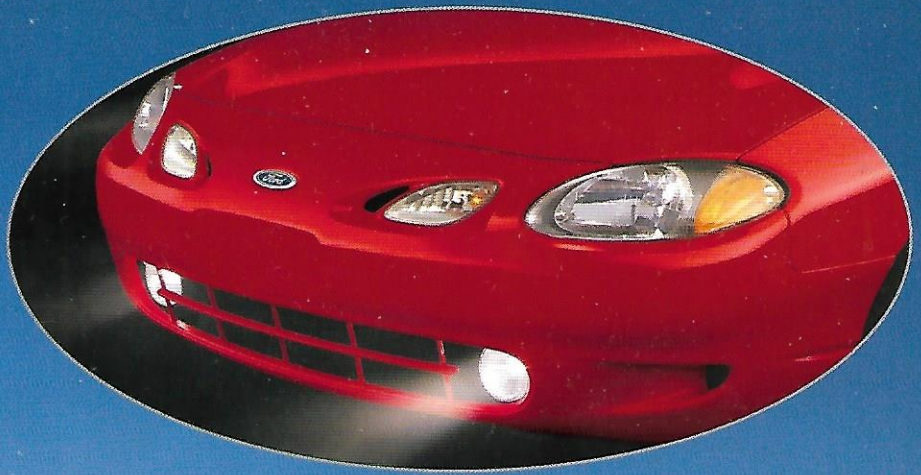


Escort ZX2 coupe takes a confident, charismatic stand against routines, ruts and rigors. More than likely, its looks will get looks. Nothing wrong with that. Add the optional Sport Package and get a great group of extras to further sharpen your image.



ESCORT
ZX2

☯ A rear spoiler (shown at left) and fog lamps (right) are part of the optional Sport Package, which you can get with the Hot Escort ZX2.




Escort ZX2 in Black Satin Clearcoat Metallic with Hot Package 327A and optional 5-spoke aluminum wheels.


COMFORT & Convenience

Escort ZX2 interior in
Medium Graphite with the
optional Sport Package seats
(other options are also in view).



 Punch up some hot sounds or some cool air on the integrated control panel. Premium speakers are standard and the optional 6-disc CD changer is a sound investment.



 The standard console has storage space for soft drinks (front and rear) and other essentials.

ESCORT

ZX2

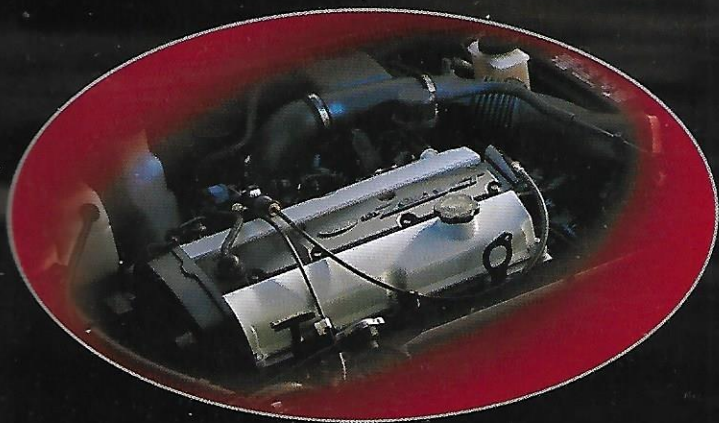


☯ The rear seat does the splits, allowing cargo to share the ride. It's standard, and handy on many a mission.



☯ The driver's seat has all the angles for sporty comfort and remembers how far you like to recline. Nice to have something to fall back on.


SAFETY & Performance




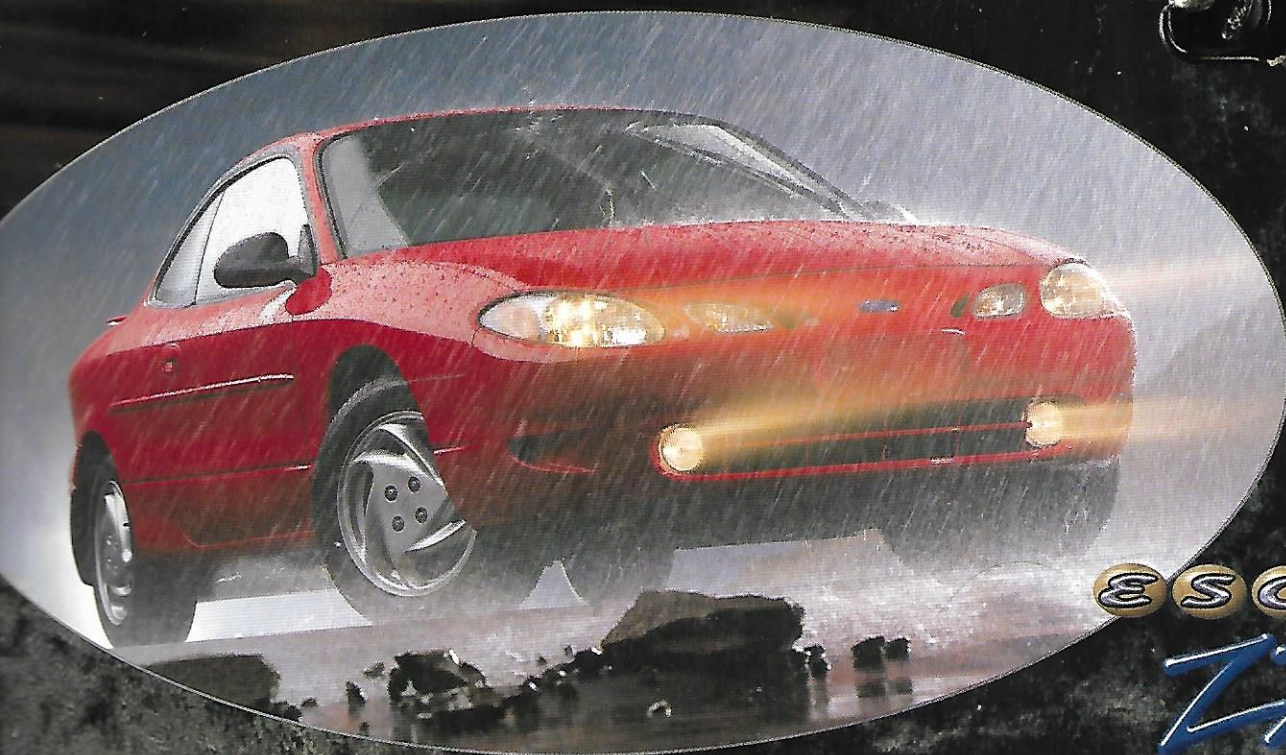
☯ The 130-horsepower, 16-valve Zetec engine yearns to breathe free and there's a quick-opening throttle to help it. It can go a full 100,000 miles between tune-ups (under normal driving conditions with routine fluid/filter changes).

The sophisticated rear quadralink suspension gives rough roads the cold shoulder and optional ABS helps you keep control in most hard braking situations or on slippery surfaces. ☯



 Dual air bags are standard (but don't forget to buckle up and secure children in the rear seat).

 Escort ZX2 Hot Package 328A includes an all-door remote entry system with perimeter anti-theft (two key fobs provided).



ESCORT
ZX2

Features, Options and Specifications

P = Preferred Equipment Package Item
S = Standard O = Optional

"Cool" "Hot"
326A 327A 328A

EXTERIOR FEATURES

Bodyside protection moldings (body color with "Hot" series)	S	S	S
Water management windshield molding	S	S	S
Dual outside mirrors	S	S	S
Dual power outside mirrors	-	O	P
Lower bodyside and underbody PVC coating	S	S	S
4-wheel molded splash guards	S	S	S
Rear reflex applique	S	S	S
Argent wheels with bright half caps	S	-	-
Styled wheel covers, "bolt on" appearance	-	S	S
5-spoke aluminum wheels	-	O	O

COMFORT/CONVENIENCE FEATURES

CFC-free air conditioning system	O	P	P
Integrated panel with controls for climate and sound system	S	S	S
Tachometer	S	S	S
Power sliding moonroof	-	O	O
Center console with storage bin, forward cup holders, rear bin/cup holder	S	S	S
Passenger-side visor mirror	S	S	S
Low-liftover trunk design	S	S	S
Solar tinted glass	S	S	S
Side window demisters	S	S	S
Flow-through 4-speed heater/defroster with rear ducts	S	S	S
2-speed wipers with variable interval	S	S	S
Temperature gauge	S	S	S
Trip odometer	S	S	S
Low-fuel warning light	S	S	S
Headlamps-on warning chime	S	S	S
Battery saver	S	S	S
Front and rear floor mats	-	O	O

CHASSIS

Body type	Unitized
Suspension, front	Independent system with gas-pressurized MacPherson struts; stabilizer bar; isolated engine subframe
Suspension, rear	Independent quadralink system; stabilizer bar
Steering	Power rack-and-pinion; 17.0:1 overall ratio
Brakes	4-wheel hydraulic, power front disc/rear drum (anti-lock system optional)
Tires	P185/65R14 BSW
Fuel capacity	12.8 gallons

"Cool" "Hot"
326A 327A 328A

SAFETY FEATURES

Driver and passenger air bag SRS, manual 3-point front lap/shoulder belt system, lap/shoulder rear belts	S	S	S
Anti-lock braking system (ABS)	O	O	O
Integrated child safety seat (available in Medium Graphite or Medium Prairie Tan, not available with Sport Package)	-	O	O
Rear window defroster	O	P	P

SEATING

Low-back cloth and vinyl bucket seats with driver's seat memory recline; split/fold (60/40) rear seat	S	S	S
---	---	---	---

GROUPS

Group 1: Includes CFC-free air conditioning and driver's door remote entry system with panic alarm and two key fobs	-	P	P
Group 2: Includes all-door remote entry with two key fobs and perimeter anti-theft system, power door locks, power windows and dual power mirrors	-	O	P
Group 3: Includes speed control, tilt steering column and convenience group (dual map lights, dual visor mirrors)	-	O	O
Sport package: Includes 15" aluminum sport wheels and low-profile tires, rear spoiler, bright oval-tip exhaust, unique all-cloth sport seats with rear integrated head restraints, fog lamps, sport badging	-	O	O
Engine block heater	O	O	O

SOUND SYSTEMS

AM/FM stereo with 4 premium speakers	S	S	S
AM/FM stereo with cassette tape player	O	O	O
Premium sound system with upgraded amplifier, AM/FM stereo, cassette tape player and trunk-mounted 6-disc CD changer	-	O	O

Note: Preferred Equipment Packages subject to change.

ENGINE

Type	2.0L Zetec dual-overhead-cam, in-line 4-cylinder with on-board diagnostics
Valve system	16 valves with variable camshaft timing (VCT)
Horsepower (SAE net)	130 @ 5,750 rpm
Torque (SAE net lb.-ft.)	127 @ 4,250 rpm
Engine control	EEC-V computer
Induction system	Sequential electronic fuel injection with fast-opening throttle
Spark plugs	Platinum tipped
Scheduled tune-up interval	100,000 miles*

TRANSAXLE

Type	5-speed manual overdrive; 4-speed automatic OD optional with "Hot" series
------	--

*Under normal driving conditions with routine fluid and filter changes.

Vibrant White Clearcoat

Toreador Red Clearcoat Metallic

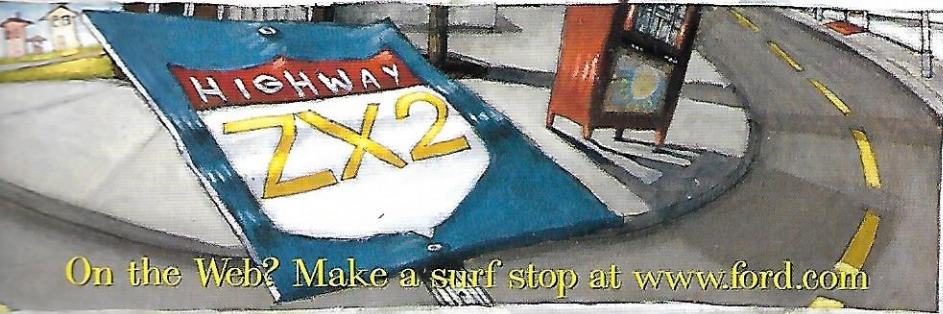
Pacific Green Clearcoat Metallic

Silver Frost Clearcoat Metallic

Bright Red Clearcoat

Ash Gold Clearcoat Metallic

Take an interactive trip on highway ZX2.



On the Web? Make a surf stop at www.ford.com

Other things to consider...

ROADSIDE ASSISTANCE PROGRAM

Every new Ford includes the assurance of a 24-hour emergency Roadside Assistance program provided during the 3-year/50,000-mile bumper-to-bumper warranty. Contact your Ford Dealer for complete details on this program and for a copy of the limited warranty.



PRODUCT CHANGES

Following publication of the catalog, certain changes in standard equipment or options, or product delays, may have occurred which would not be included in these pages. Ford reserves the right to change product specifications at any time without incurring obligations.



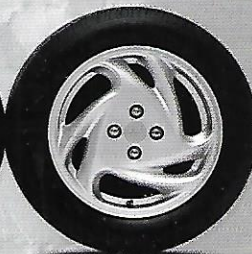
Standard argent wheel with bright half cap



Styled steel wheel and full wheel cover with "bolt on" appearance



Optional 5-spoke aluminum wheel



Aluminum sport wheel (included with optional Sport Package)

Exterior Paint Colors

- Light Gold Clearcoat Metallic
- Light Pine Green Clearcoat Metallic
- Light Red Clearcoat
- Leadfoot Red Clearcoat Metallic
- Light Denim Blue Clearcoat Metallic
- Light Blue Clearcoat Metallic
- Light Green Clearcoat Metallic*
- Light Frost Clearcoat Metallic*
- Black Satin Clearcoat Metallic*
- Light White Clearcoat*

Interior Trim Colors

	Medium Graphite	Slate Blue	Medium Prairie Tan
Light Gold Clearcoat Metallic			o
Light Pine Green Clearcoat Metallic	o		o
Light Red Clearcoat	o		o
Leadfoot Red Clearcoat Metallic	o		o
Light Denim Blue Clearcoat Metallic	o	o	
Light Blue Clearcoat Metallic	o	o	o
Light Green Clearcoat Metallic*	o		o
Light Frost Clearcoat Metallic*	o	o	
Black Satin Clearcoat Metallic*	o		o
Light White Clearcoat*	o	o	o

*Available in "Cool" series with Medium Graphite interior only.

Light Denim Blue Clearcoat Metallic

Black Satin Clearcoat Metallic

Denim Blue Clearcoat Metallic

Light Pine Green Clearcoat Metallic

Preferred Equipment Packages



Cool. Escort ZX2 326A

The Escort ZX2 standard equipment includes such features as:

- Electronic AM/FM stereo radio with four premium speakers
- Power rack-and-pinion steering
- Driver and front passenger air bag supplemental restraint system
- Solar tinted glass
- Integrated control panel



Hot. Escort ZX2 327A

All the standard features listed in "Cool" package above plus:

- Air conditioning
- Driver's door remote entry system with panic alarm feature and two key fobs
- Rear window defroster

Escort ZX2 328A

All the standard features listed in "Cool" package above plus:

- Air conditioning
- All-door remote entry with panic alarm feature, perimeter anti-theft system and two key fobs
- Rear window defroster
- Dual power mirrors
- Power door locks
- Power windows

ESCORT
ZX2



BUILDING A COMPLETE LINE-UP OF QUALITY CARS AND TRUCKS



Aspire



Explorer



Escort



Windstar



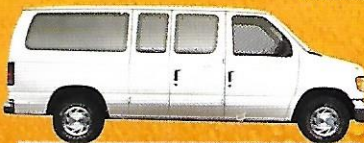
Probe



Aerostar



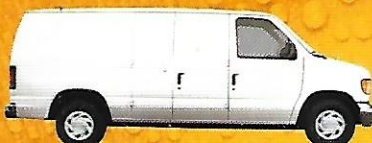
Mustang



Club Wagon



Contour



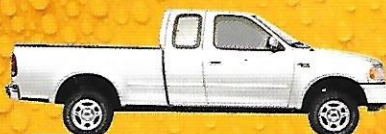
Econoline



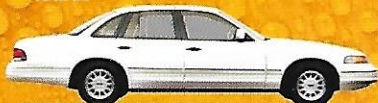
Thunderbird



Taurus



F-Series



Crown Victoria



Expedition



Ranger

