



### AMERICA'S BEST WARRANTY

POWERTRAIN LIMITED WARRANTY	NEW VEHICLE LIMITED WARRANTY	ANTI-PERFORATION WARRANTY	24-HOUR ROADSIDE ASSISTANCE
10 YEARS	5 YEARS	7 YEARS	5 YEARS
100,000 MILES	60,000 MILES	UNLIMITED MILES	UNLIMITED MILES



CONNECT WITH [HYUNDAIUSA.COM/SOCIAL](http://HYUNDAIUSA.COM/SOCIAL)

©2013 HYUNDAI NP020 F2014A

2014

---

HYUNDAI  
**SONATA**



# DESIGNING THE MIDSIZE SEDAN. THOUGHTFULLY.

## Presenting the Hyundai Sonata.

At Hyundai, here's the way we think about car buyers like yourself: You're interviewing us. And if we want to beat out all other candidates for the job of being your next car, we'd better have a very impressive resume.

The Hyundai Sonata's accomplishments? For starters, J.D. Power ranked it the "Most Dependable Mid-Size Car" in 2013.<sup>1</sup> And the 2013 Sonata earned a top five-star rating in government safety testing,<sup>2</sup> as well as being named a Top Safety Pick by the Insurance Institute for Highway Safety.<sup>3</sup>

For 2014, our Sonata lineup includes the GLS – a spacious five-passenger model with so much room inside, the EPA classifies it as a large sedan. Next comes Sonata SE, a sedan sport-tuned for higher levels of responsiveness and performance. Then there's Sonata Limited, fully equipped with advanced technologies that satisfy your desire for comfort and convenience. Whether you're eyeing the Sonata GLS, SE or Limited, you'll see the pleasing results of a design approach we call Fluidic Sculpture. Sonata's bold lines create the impression of a sporty coupe in its curb appeal. Step inside, and it's a spacious four-door, five-passenger sedan filled with modern features like Hyundai Blue Link® telematics. And backed by three years of Assurance Connected Care.<sup>4</sup>

Of course, we could go on and on with our introduction to the Hyundai Sonata. But they say the best resumes are kept to a single page.



"MOST DEPENDABLE MID-SIZE CAR"

SONATA LIMITED TECHNOLOGY PACKAGE in Phantom Black Metallic





<sup>1</sup> The Hyundai Sonata received the lowest number of problems per 100 vehicles among midsize cars in the proprietary J.D. Power and Associates 2013 Vehicle Dependability Study.<sup>SM</sup> Study based on responses from 37,917 original owners of 2010 model-year vehicles after three years of ownership about problems experienced in the past 12 months. Proprietary study results are based on experiences and perceptions of consumers surveyed September-December 2012. Your experiences may vary. Visit [jdpower.com/hyundai](http://jdpower.com/hyundai). <sup>2</sup> Government star ratings are part of the National Highway Traffic Safety Administration's New Car Assessment Program ([www.safercar.gov](http://www.safercar.gov)). <sup>3</sup> Based on Insurance Institute for Highway Safety 40 mph moderate overlap frontal crash test, 31 mph side-impact test, 20 mph rear-impact test and roof strength testing. Test performed by the Insurance Institute for Highway Safety. For details, visit [www.iihs.org](http://www.iihs.org). <sup>4</sup> Assurance Connected Care requires active Blue Link subscription. Assurance Connected Care includes 3 years of the Blue Link Assurance Package. Three-year term starts from the new-vehicle date of first use and is available for new-vehicle purchases and leases on or after May 16, 2013. Only use Blue Link and corresponding devices when safe to do so. Cellular and GPS coverage required. Blue Link available on most 2013 and 2014 Hyundai vehicles. Features and fees vary by subscription plan. For more on details and limitations, visit [Hyundai.com](http://Hyundai.com) or your authorized Hyundai dealer. Blue Link is a registered trademark of Hyundai Motor America. Hyundai is a registered trademark of Hyundai Motor Company. All rights reserved. ©2013 Hyundai Motor America.





SONATA 2.4 GLS POPULAR EQUIPMENT PACKAGE in Harbor Gray Metallic





2014 SONATA GLS

# DELIVERING TRUE COMFORT. THOROUGHLY.

---

Take your seat in a Sonata and see how easy it is to settle in and relax. You're surrounded by room – headroom, hip room, legroom and storage room. It's clear Sonata knows why you're here: So you and your passengers all have plenty of personal space to travel in true comfort.

Everything feels just right. The right size. The right shape. The right texture and touch. Car designers call this subtle, reassuring feeling “ergonomics”, a fancy way of saying the car functions like a natural extension of the driver's instincts.

But what makes a car exceptionally comfortable? It's not just the things you can see, like plush seats, thick carpeting or an upgraded audio system complete with a rearview camera.<sup>1</sup> Comfort really comes from what you can't see – starting with the car's chassis. Sonata's strong, lightweight structure creates the foundation for a suspension that's able to balance handling agility with a smooth, solid and substantial ride. There's advanced technology at work here. With Hyundai's Driver Selectable Steering Modes, you decide the type of feel you prefer at the wheel: Normal, Comfort or Sport. New standard Hillstart Assist and Vehicle Stability Management technologies are also working “invisibly” to create a ride that is as safe as it is comfortable.



<sup>1</sup> Optional feature on GLS model, standard on SE and Limited models.



<sup>1</sup> 192 HP on SE model, 190 HP on GLS and Limited models. EPA estimates for comparison only. Your actual mileage will vary with options, driving conditions, driving habits and the vehicle's condition. <sup>2</sup> Available on Sonata SE, standard on Sonata Limited.



**ADVANCED ENGINE TECH** Our Gasoline Direct Injection technology injects fuel directly into each cylinder's combustion chamber for improved power and fuel efficiency with cleaner emissions. Also standard is Dual Continuously Variable Valve Timing, which optimizes power and fuel efficiency at all engine speeds. It helps smooth the idle and lower emissions, too, satisfying Ultra Low Emission Vehicle (ULEV) standards.



**ACTIVE ECO SYSTEM** Hyundai's Active Eco System technology modifies engine and automatic transmission controls to smooth out throttle response and shift points with the simple push of a button. Internal testing has shown this feature can help improve real-world fuel efficiency. Allowing you, and your budget, to go further between pit stops.





SONATA 2.0T SE PREMIUM PACKAGE in Radiant Silver

2014 SONATA SE

## ACHIEVING TOTAL PERFORMANCE. INTELLIGENTLY.

---

Driving enthusiasts will revel in Sonata SE's performance-minded design and engineering enhancements. A sport-tuned suspension reduces body roll and improves handling in curves. Race-inspired paddle shifters on the leather-wrapped steering wheel keep you engaged, and sport seats with leather bolsters keep you firmly in command. You'll also notice functional styling cues like a rear lip spoiler and chrome-tipped dual exhaust that accentuate the spirited 2.4L Gasoline Direct Injection (GDI) or 2.0L turbocharged (2.0T) engines – powerplants whose muscle is translated into motion through stylish 18" alloy wheels.

Now, about those engines. Our innovative 2.4L GDI powerplant puts up to 192 horsepower underfoot with an EPA-estimated 35 MPG highway rating,<sup>1</sup> while our 2.0L engine was the first to couple advanced 4-cylinder turbocharging with GDI – and do what many thought wasn't possible. Sporting a compact twin-scroll turbo design beneath the hood, the Sonata SE and Limited 2.0T models now enjoy performance levels comparable to a V6 – with the lighter appetite for fuel of a four-cylinder engine. Because Sonata is a Hyundai, it also offers two more owner benefits: America's Best Warranty and Hyundai Assurance, our pledge to exceptional customer service and owner satisfaction.



**BLIND SPOT DETECTION** Sonata's new Blind Spot Detection System features warning indicators on the side mirrors that take some of the worry out of lane changes by alerting the driver when a vehicle enters defined blind spot areas near the rear of the car.<sup>2</sup> An available driver's side spotter mirror, also new for 2014, enhances blind-spot visibility even further.







<sup>1</sup>The Bluetooth® wordmark and logos are registered trademarks owned by Bluetooth SIG, Inc., and any use of such marks by Hyundai is under license. Other trademarks are those of their respective owners. iPod® is a registered trademark of Apple Inc. Blue Link® subscription service agreement required. Features vary by subscription plan. Terms and conditions of subscription agreement apply. Blue Link service works using CDMA-based cellular networks in the 50 United States. Blue Link service is not available where there is no cellular coverage, particularly in enclosed or remote areas. Service availability may be affected by the signal strength, foliage, weather, topographical conditions (mountains) and nearby structures (tall buildings, tunnels) and other factors. For additional details and system limitations, visit HyundaiBlueLink.com. <sup>2</sup>All SiriusXM Services require a subscription sold separately after a trial period. If you decide to continue your service at the end of your trial subscription, the plan you choose will automatically renew and bill at then-current rates until you call 1-866-635-2349 to cancel. See SiriusXM Customer Agreement for complete terms at [www.siriusxm.com](http://www.siriusxm.com). Other fees and taxes will apply. All fees and programming are subject to change. Sirius satellite service is available only to those at least 18 years of age in the 48 contiguous USA states, DC, and Puerto Rico (with coverage limitations). SiriusXM Internet Radio service is available throughout our satellite service area and in AK and HI. ©2013 Sirius XM Radio Inc. Sirius, XM and all related marks and logos are trademarks of Sirius XM Radio Inc. HD Radio is a wordmark and trademark of iBiquity Digital Corporation, used under license by the HD Digital Radio Alliance. <sup>3</sup>Infinity® is a registered trademark of Harman International Industries, Inc. <sup>4</sup>Remote Vehicle Start is only available for push-button start equipped vehicles with an automatic transmission. Not available on all models.



**SPEAK, AND YE SHALL FIND** Talk to your Sonata, and it hears you. With voice recognition technology, Sonata's advanced audio and navigation systems make it easier than ever to find your favorite music, nearby gas stations, ATMs or restaurants, and more. SiriusXM® data services let your voice carry even further by giving you the ability to get current traffic reports and check weather, sports and stock updates.<sup>2</sup>



**MUSIC COMES ALIVE** Plug in your iPod® or MP3 player and enjoy listening to your favorite playlists through an available high-fidelity Infinity® AM/FM/SiriusXM/CD/MP3 audio system that adds lifelike sound quality to your music. Eight speakers, a 400-Watt external amplifier and resonant subwoofer fill your car's cabin with crystal-clear sound.<sup>3</sup>



SONATA 2.0T LIMITED TECHNOLOGY PACKAGE in Camel Leather



**HYUNDAI BLUE LINK** Our innovative telematics let you search for points of interest using voice commands and download them to the navigation system for turn-by-turn directions. If your Hyundai is stolen, Blue Link can immobilize it. Teenager borrowing the car? Geo-Fence, Speed and Curfew Alert features let you rest easy. Blue Link even has a mobile app that lets you lock, unlock and start your Hyundai remotely.<sup>4</sup> For a full list of features, visit [HyundaiBlueLink.com](http://HyundaiBlueLink.com).

2014 SONATA LIMITED

## IMAGINING REFINED COMFORT. COMPLETELY.

These days, a car's refinement is judged on more than just how well it's made. The criteria now includes this question: How seamlessly does it integrate digital information from outside the car? Which is why every 2014 Sonata comes standard with features like a Bluetooth® hands-free phone system with audio streaming, iPod® input jacks and Hyundai Blue Link®, our fully integrated navigation and communication system.<sup>1</sup>

Sonata Limited extends these technological riches even further with an available 8" color touchscreen navigation system, complete with a rearview camera display. Your high expectations for comfort are also satisfied with premium amenities like a ventilated driver seat and heated leather seating for both the front and backseat passengers.

At the press of a button, you can start the engine, or open the available panoramic sunroof for extra-wide views of sunny and starry skies. Advanced illumination at night is available with a Technology Package that includes High Intensity Discharge Xenon headlights and LED taillights. You'll see better. And look better.





2014 SONATA LINEUP

SONATA GLS



KEY STANDARD EQUIPMENT:

- 190 HP, 2.4L Gasoline Direct Injection DOHC 4-cylinder engine with Dual Continuously Variable Valve Timing (D-CVVT)
- 6-speed SHIFTRONIC® automatic transmission
- Active ECO System
- MacPherson strut (front) & multi-link (rear) suspension
- Driver Selectable Steering Mode
- Remote keyless entry system with alarm
- Air conditioning with cabin air filtration
- Premium cloth seating surfaces
- 6-way adjustable driver seat
- Tilt-and-telescopic steering wheel with audio, Bluetooth® & cruise controls
- Power door locks & windows with driver auto-down/up
- Metalgrain interior accents
- AM/FM/SiriusXM/CD/MP3 audio system with 6 speakers
- iPod®/USB & auxiliary input jacks
- Bluetooth® hands-free phone system with phonebook transfer & audio streaming
- Blue Link® telematics system
- Advanced trip computer with custom settings
- Electronic Stability Control with Traction Control System
- 4-wheel disc ABS with Brake Assist & Electronic Brake-force Distribution

- 6-airbag safety system with advanced dual front airbags & Occupant Classification System
- Active front head restraints
- Tire Pressure Monitoring System
- 16" aluminum alloy wheels
- Daytime Running Lights
- Bodycolor front grille & chrome window beltline moldings

POPULAR EQUIPMENT PACKAGE

- GLS Equipment plus:
- + Heated front seats
  - + Power driver seat with lumbar support
  - + Chrome interior door handles
  - + Leatherette door panel inserts
  - + LED interior dome lights
  - + 4.3" color touchscreen audio display with rearview camera
  - + HD Radio™ technology with multicasting
  - + Automatic headlights
  - + Side mirror-mounted turn signal indicators
  - + Driver blind spot mirror



SONATA LIMITED

SE STANDARD EQUIPMENT PLUS:

- + 190 HP, 2.4L Gasoline Direct Injection DOHC 4-cylinder engine with D-CVVT or 274 HP, 2.0L Gasoline Direct Injection DOHC 4-cylinder engine with twin-scroll turbocharger
- + Power tilt-and-slide sunroof
- + Blind Spot Detection System
- + Leather seating surfaces
- + Ventilated driver seat
- + Heated front & rear seats
- + Dual automatic temperature control
- + Steering-wheel-mounted paddle shifters (2.0T only)
- + Premium door sill scuff plates
- + 360-Watt Dimension® AM/FM/SiriusXM/CD/MP3 audio system with 6 speakers & subwoofer
- + Floor console-mounted rear vents

- + Piano Black or Woodgrain interior accents
- + Auto-dimming rearview mirror with compass & HomeLink®
- + Chrome-tipped dual exhaust (2.0T only)
- + 17" aluminum alloy wheels
- Deletes sport-tuned suspension & steering

TECHNOLOGY PACKAGE

- + Panoramic sunroof
- + 8" touchscreen navigation system with voice commands & rearview camera
- + 400-Watt Infinity® AM/FM/SiriusXM/CD/MP3 audio system with 8 speakers & subwoofer
- + High Intensity Discharge Xenon headlights
- + LED taillights
- + 18" Hyper Silver alloy wheels

SONATA SE



GLS POPULAR EQUIPMENT PACKAGE PLUS:

- + 192 HP, 2.4L Gasoline Direct Injection DOHC 4-cylinder engine or 274 HP, 2.0L Gasoline Direct Injection DOHC 4-cylinder engine with twin-scroll turbocharger
- + 6-speed SHIFTRONIC® automatic transmission with steering-wheel-mounted paddle shifters
- + Sport-tuned suspension & steering
- + Proximity keyless entry with push-button start
- + Dual-zone automatic temperature control (2.0T only)
- + Electroluminescent gauge cluster with color LCD display
- + Leather bolster with cloth insert sport seats
- + Leather-wrapped steering wheel & shift knob
- + Carbon fiber appearance interior trim
- + Chrome accent front grille

- + Dual exhaust system with chrome tips
- + Chrome accent exterior door handles
- + Rear lip spoiler
- + 18" Hyper Silver alloy wheels

PREMIUM PACKAGE

- + Power tilt-and-slide sunroof
- + Blind Spot Detection System
- + Dual-zone automatic temperature control (2.4 only)
- + 8" touchscreen navigation system with voice commands & rearview camera
- + 360-Watt Dimension® AM/FM/SiriusXM/CD/MP3 audio system with 6 speakers & subwoofer

EXTERIOR DIMENSIONS

2.4 GDI & 2.0T

Wheelbase (in)	110.0	Tread Width (in), front/rear 17" wheels	62.6/62.6
Overall Length (in)	189.8	Tread Width (in), front/rear 18" wheels	62.5/62.5
Overall Width (in), excluding mirrors	72.2	Coefficient of Drag (Cd)	0.28 (2.4 GDI) 0.29 (2.0T)
Overall Height (in)	57.9		
Tread Width (in), front/rear 16" wheels	62.9/62.9	Base Curb Weight (lbs)	3,245-3,428 (2.4 GDI) 3,417-3,527 (2.0T)

INTERIOR DIMENSIONS

2.4 GDI & 2.0T

Head Room (in), front/rear	40.0/37.8	Hip Room (in), front/rear	55.2/54.9
Head Room (in), w/sunroof	38.1/37.6	Passenger Volume (cu ft)	103.8
Head Room (in), w/panoramic sunroof	38.2/37.2	Cargo Volume (cu ft)	16.4
Leg Room (in), front/rear	45.5/34.6	Total Interior Volume (cu ft)	120.2
Shoulder Room (in), front/rear	57.9/56.7		

2014 SONATA WHEELS

16" ALUMINUM ALLOY WHEEL



18" HYPER SILVER ALLOY WHEEL

17" ALUMINUM ALLOY WHEEL

2014 SONATA **EXTERIOR COLORS**



PEARL WHITE



RADIANT SILVER



IRIDESCENT SILVER BLUE PEARL



PACIFIC BLUE PEARL



INDIGO BLUE PEARL



VENETIAN RED



HARBOR GRAY METALLIC

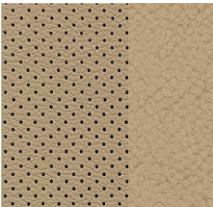


DESERT BRONZE

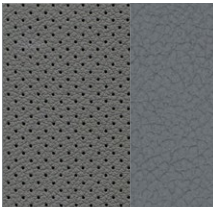


PHANTOM BLACK METALLIC

2014 SONATA **INTERIOR COLORS**



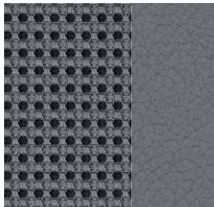
CAMEL LEATHER



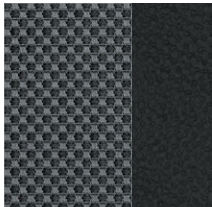
GRAY LEATHER



BLACK LEATHER



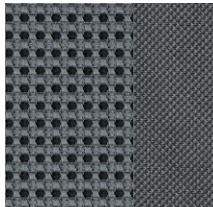
GRAY LEATHER + CLOTH



BLACK LEATHER + CLOTH



CAMEL CLOTH



GRAY CLOTH

**EPA MILEAGE ESTIMATES**

**2.4 GDI**

City / Highway / Combined	24 / 35 / 28 MPG
Fuel Tank Capacity (gal)	18.5
EPA Classification (non-sunroof models)	Large Car

**2.0T**

City / Highway / Combined	21 / 32 / 25 MPG
Fuel Tank Capacity (gal)	18.5
EPA Classification (non-sunroof models)	Large Car

 **HYUNDAI**  
**Assurance**  
CONNECTED CARE

Hyundai's Assurance Connected Care offers Maintenance Alerts, Monthly Vehicle Reports, Automatic Collision Notification and more. Together with Blue Link navigation enhancements and mobile app features, you'll feel assured and secured like never before. For more information, please visit [Hyundai.com](http://Hyundai.com)

See dealer for LIMITED WARRANTY details. Fuel economy estimated by EPA for comparison only. Mileage may vary. While the information contained in this brochure was correct at the time of printing, specifications and equipment can change. Feature comparisons based on competitor information available at the time of printing. No warranty or guarantee is being extended in this brochure, and Hyundai reserves the right to change product specifications and equipment at any time without incurring obligations. Some vehicles are shown with optional equipment. Specifications apply to U.S. vehicles only. Please contact your Hyundai dealer for current vehicle specifications. As part of Hyundai's commitment to a responsible environment, this brochure is printed using paper certified by the Forest Stewardship Council.™ FSC® certification helps ensure that the highest social and environmental standards are met in the making of the paper we use, contributing to conservation, responsible management, and community-level benefits for people near the forests.

