

Jeep[®]



2006 JEEP COMMANDER

Our Biggest Idea Yet

For more information, please visit jeep.com/commander
For more information on Trail Rated, please visit jeep.com/trailrated

Jeep is a registered trademark of DaimlerChrysler Corporation
©1995-2005 DaimlerChrysler. All Rights Reserved. For important information, go to jeep.com/privacy



COMMANDER FEATURES



POWER

For matchless, authentic Jeep® brand power, take control of Commander Limited's available 5.7L HEMI® V8 engine with multispeed automatic transmission, Electronic Range Select (ERS) and Tow/Haul mode. On the highway, the HEMI engine's 330 horsepower helps you rule the road.



VERSATILITY

Commander is the ultimate Jeep vehicle for versatility and flexibility; seating for seven passengers, 15 usable seating/cargo configurations, and massive space for your gear (max. 68.5 cu ft). Third-row seating with split-back convenience is standard. The second row splits 40/20/40 and the outboard seatbacks recline. Both passenger rows fold forward to provide a flat load floor for the maximum in utility and packability.



BUILT-IN SAFETY

Advanced driver and front-passenger multistage air bags and Side Occupant Protection System* with side-curtain air bags come standard on Commander for piece of mind.

*Always sit properly in the seat with the seatbelt fastened.



RUGGED FEATURES

The available self-rising rear glass window can be opened remotely with a key fob. A rain gutter channels water away from you when opening the rear liftgate. The diamond-plate texture on the step pad provides a rugged, non-skid surface when using the rear bumper to gain access to the roof. Exterior chrome rear assist handles are standard on Commander Limited.



GPS NAVIGATION SYSTEM

The available GPS Navigation System offers a full-screen (5.8-inch) color display with AM/FM stereo and CD player and is great for plotting out your way to even the most remote retreats.

For more information, please visit jeep.com/commander



COMMANDER COLOR OPTIONS



COMMANDER LIMITED



Yuma Leather with perforated Inserts
Saddle Brown — Standard



Yuma Leather with perforated Inserts
Light Graystone — Standard



Yuma Leather with perforated Inserts
Two-tone Light Graystone/
Dark Khaki — Standard

WHEELS



17-inch Wrench Cast Aluminum
with machined face and Sparkle
Silver accents — Standard

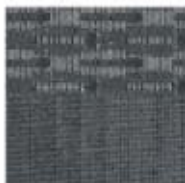


17-inch Chrome-Clad Forged
Aluminum — Available on
Commander Limited

COMMANDER



Telluride Cloth/Albi Cloth
Medium Khaki — Standard



Telluride Cloth/Albi Cloth
Medium Slate Gray — Standard



McKinley Leather Trim
Medium Khaki — Available



McKinley Leather Trim
Medium Slate Gray — Available



17-inch Hulk Cast Aluminum
painted Mineral Gray —
Available on Commander

For more information, please visit jeep.com/commander



COMMANDER OFF-ROAD CAPABILITY



QUADRA-DRIVE II

Quadra-Drive II® can transfer up to 100 percent of available torque to any wheel with traction within a fraction of a second.



PARKSENSE™ REAR PARK ASSIST SYSTEM

The ParkSense™ Rear Park Assist System* uses sound waves to detect nearby obstacles in and near the rear path of the vehicle to help you maneuver in tight spaces at parking speeds. Audio-visual indicators in the overhead display in the rear of the vehicle alert you to the proximity of most larger, stationary objects that might be outside your line of sight.

* Always check entire surroundings before backing up.

ELECTRONIC STABILITY PROGRAM (ESP)

Commander Limited's standard Electronic Stability Program* (ESP) automatically assists drivers in maintaining control of their vehicles during extreme maneuvers.

* Always drive carefully, consistent with conditions. Always wear your seat belt and obey traffic laws



5.7 LITER HEMI® V-8

The optional 5.7L Hemi(R) V8 delivers best in class 330 horsepower and 375 lb-ft of torque* for incredible acceleration. Electronic Throttle Control (ETC) helps to maintain consistent cruising speed, while the Multi-Displacement System (MDS) automatically scales back to four cylinders, when appropriate, to boost fuel economy. MDS also reduces emissions and provides a smooth seamless transition between four and eight cylinders.

* Based on the Automotive News 2005 lower segmentation. Excludes other DaimlerChrysler vehicles.

For more information, please visit jeep.com/commander



COMMANDER MODELS

	COMMANDER			LIMITED
	S	T	U	H
C A P A B I L I T Y				
Four-Wheel-Drive System — Quadra-Trac I® full-time single-speed ⁽¹⁾ (4x4 models only, included with 3.7L V6 engine)	•	•	•	
— Quadra-Trac II® active 4WD (included with 4.7L V8 engine or Off-Road Group I)	P	P	P	•
— Quadra-Drive II® active 4WD (included with 5.7L HEMI® V8 engine)			0	0/P
Off-Road Group I — Includes Quadra-Trac II 4WD, fuel tank, transfer case, front suspension skid plates and tow hooks (2 front/1 rear) (requires 3.7L V6)	0	0	0	
Off-Road Group II — Includes fuel tank, transfer case, front suspension skid plates and tow hooks (2 front/1 rear) (requires V8 and 4WD)	0	0	0	0
Powertrain — 3.7L V6	•	•	•	
— 4.7L V8	0	0	0	•
— 5.7L HEMI V8 with MDS				0
Tires — P245/65R17 Goodyear Fortera HL black sidewall all-terrain	•	•	•	•
— P245/65R17 Goodyear Fortera HL outline-white-letter all-terrain	0	0	0	0
E X T E R I O R				
Lighting — Automatic headlamps (ON/OFF) include programmable headlamps-on-with-wipers, parade mode and delay features		•	•	•
— Fog lamps integral with front fascia, water resistant		•	•	•
— SmartBeam™ intelligent high-beam headlamp control system				•
Wiper System — Rain-sensitive automatic wiper system with rain-sensitive features				•
I N T E R I O R				
Air Conditioning/Heat — Manual temperature controls with second-row outlets	•	•	•	
— Infrared Dual Zone Climate Control with solar sensors and rear-seat outlets				•
— Third-row manual temperature controls and outlet	0	0	0	•
Cargo Area — Reversible floor panel with storage tray and 2 cargo tie-down loops in quarter trim, cargo storage bin and storage net in trim panel	•	•	•	•
Jeep® Memory System — Radio station presets, last-station settings, driver's seat position, exterior mirrors, and accelerator and brake pedal settings for two drivers linked to separate key fobs				•
Pedals — Power adjustable (included in Popular Equipment Group)		P	•	
— Power adjustable with memory				•
Popular Equipment Group — Includes roof rack cross rails, heated seats and power adjustable pedals		0	•	•
Rearview Mirror — Auto-dimming		•	•	•
Seats — Second-row 40/20/40 bench with outboard reclining, Fold and Tumble section with head restraints and fold-down center armrest with deployable cup holders	•	•	•	•
— Third-row 50/50 single-action split-folding seatbacks with head restraints	•	•	•	•
— Heated front seats (included in Popular Equipment Group)		0/P	•	•
— Front continuously variable manual lumbar adjustment	•	•	•	•
— 8-way power driver's, manual front-passenger seat adjustment	•			
— 8-way power driver's, 4-way power front-passenger seat adjustment		•	•	
— 8-way power driver's with memory, 4-way power front-passenger seat adjustment				•
Sunroof — Power with CommandView™ Dual Skylights; tinted panels — includes roller sunshades		0	•	•

For more information, please visit jeep.com/commander



COMMANDER MODELS

	COMMANDER			LIMITED
	S	T	U	H
MOPAR ACCESSORY PACKAGES⁽²⁾				
On-Road Package — Chrome Front Air Deflector, Chrome Fuel Filler Door, Molded Running Boards				0
Remote Start — Module and installation kit	0	0	0	0
SAFETY / SECURITY				
Air Bags⁽³⁾ — Advanced front multistage, deploy during a severe-force frontal or near-frontal impact	•	•	•	•
— Side Occupant Protection System with side-curtain air bags and rollover detection system provides additional protection to outboard occupants in the event of a vehicle rollover	•	•	•	•
Child Seat Anchor System (LATCH) — Lower child seat anchors and upper tether anchors help ease the installation of compatible aftermarket seats	•	•	•	•
Electronic Brake System — Antilock brake system (ABS) with Brake Assist	•	•	•	•
— All-speed traction control	•	•	•	•
Electronic Stability Program (ESP) — Includes Brake Assist and Electronic Roll Mitigation	•	•	•	•
ParkSense™ Rear Park Assist System⁽⁴⁾ — Rear parking assistance system with shut-off switch	•	•	•	•
Remote Keyless Entry System — Operates door and liftgate locks and liftgate flipper glass release; includes Sentry Key® Engine Immobilizer	•	•	•	•
Restraint System — Height-adjustable, pivoting front seat belts with pretensioning and digressive load-limiting retractors; BeltAlert driver and front passenger seat belt reminder system, shoulder/lap belts for all seating positions	•	•	•	•
Sentry Key Engine Immobilizer	•	•	•	•
Tire Pressure Monitoring Display System — Features tire valve stem-mounted sensors that monitor and display (in EVIC) individual tire pressures for all four rotating and warns if pressure is too low				•
Tire Pressure Monitoring Warning System — Features tire valve stem-mounted sensors that monitor pressure and display warning in instrument cluster if pressure is too low	•	•	•	
Vehicle Security System — Monitors doors, flipper glass and liftgate		•	•	•
SOUND SYSTEMS				
Entertainment/Communication — UConnect™ voice-activated hands-free communication system			0	0
— SIRIUS Satellite Radio		0	0	•
— Rear DVD Video Entertainment System (VES®) with DVD player in center floor console, remote control, 2 wireless headphone jacks, and Rear Seat Video™ screen in overhead console		0	0	0
Radios — AM/FM stereo radio with CD player and clock	•			
— AM/FM/RDS stereo radio with 6-disc CD/MP3 player and clock		0	•	•
— Full-screen GPS Navigation Radio with AM/FM/RDS stereo, 6-disc CD/MP3 player and clock			0	0
Speakers — 6-speaker system	•			
— Boston Acoustics® Premium Sound System with 6 Boston Acoustics speakers and 276-watt digital amplifier		•	•	•

• = Included. P = Available within package noted. 0 = Optional.

⁽¹⁾ Quadra-Trac I is not appropriate for conditions or situations where low range is required, such as severe off-road driving.

⁽²⁾ Mopar products are designed solely to enhance the appearance of the vehicle (and its occupants); they are not intended to prevent injury or damage in the event of an accident. Off-Road Package available early fourth quarter.

⁽³⁾ Certified to the Federal Regulation for automatic passenger occupant classification. Always use seat belts. Children 12 and under should always be in a backseat correctly using an infant or child restraint system, or the seat belt positioned correctly for the child's age and weight.

For more information, please visit jeep.com/commander