

ALL NEW 2005 JEEP GRAND CHEROKEE







2

**2005 Jeep Grand Cherokee**  
**The Off-Road Legend Continues...**  
**On-Road**

NEW DESIGN INSIDE AND OUT

- 5.7L HEMI® V8 engine with Multi-Displacement System\*
- Quadra-Drive II® 4WD with Electronic Limited-Slip Differentials\*
- Luxurious, redesigned interior cabin and instrument console
- 4-Wheel Brake Traction Control
- Innovative Electronic Stability Program\*
- SmartBeam™ Intelligent Headlamp System\*
- All-new, stronger suspension system
- Variable-ratio rack-and-pinion steering



# OFF-ROAD PIONEER

Amazing advancements in power and off-road capability raise the all new 2005 Jeep Grand Cherokee to stunning new heights. A pioneer since it was first introduced, Grand Cherokee leads the industry once again with new, exclusive technology.



## New! 5.7L HEMI® V8 Engine\*

When adventure calls, the HEMI V8 engine gives you the class-leading power and torque to take on some of the world's most challenging terrain

## New! Quadra-Drive II® Four-Wheel Drive\*

Undeniably the 4WD leader in traction-management capability, Quadra-Drive II incorporates front and rear Electronic Limited-Slip Differentials, an industry first

## New! Re-designed Suspension System

A new and stronger suspension system increases front wheel articulation and improves handling, helping to make this the most off-road-capable Grand Cherokee ever



*Jeep Grand Cherokee Limited shown in Light Khaki — Pacific Ocean, California.*

- ParkSense™ Rear Back-up System\*
- Stronger UniFrame body and safety cage has more Quiet Steel\* technology than any other vehicle — substantially reducing noise, vibration and harshness
- Enhanced climate control systems

- Boston Acoustics™ Premium Sound System\*
- SIRIUS Satellite Radio\*
- Full-Screen GPS Navigation Radio\*
- UConnect™ Hands-Free Communication System\*
- DVD Rear-Seat Entertainment System\*





# ALL NEW QUADRA-DRIVE II<sup>®</sup>

Commanding BEST-IN-CLASS traction management, the all new 2005 Jeep Grand Cherokee Quadra-Drive II Four-Wheel-Drive (4WD) System is one of the most advanced 4WD transfer case systems available. In any vehicle. Anywhere.

Revolutionary front and rear Electronic Limited-Slip Differentials work together with the new NV245 transfer case and its electronically controlled center clutch pack to help keep you moving securely forward at all times.

Quadra Drive II can transfer up to 100% of available torque to any wheel with traction within a fraction of a second. In fact, it has an activation speed faster than the original Quadra-Drive<sup>®</sup> system and a torque capacity of up to 480% greater.

Stronger, faster and quieter than any Grand Cherokee 4WD system ever, Quadra-Drive II raises the Jeep brand's 4WD capability to new, history-making heights.



To discover more about the Jeep brand's off- and on-road capabilities, log on to [jeep.com/4x4](http://jeep.com/4x4) and take our interactive Trail Challenge.

#### COMPLETE YOUR POWERTRAIN

- 2005 Jeep Grand Cherokee offers more 4WD systems than any other 4x4. It also has the largest and most powerful line-up of available engines in its class

- Quadra-Drive II 4WD is available on Grand Cherokee Limited. Pair it with the 4.7L Power Tech V8 engine or the awesome 5.7L HEMI<sup>®</sup> V8 engine

Class is based on Ward's 2004 Middle Sport/Utility Vehicle segments and published industry information.



## FOUR-WHEEL DRIVE OPTIONS

**Quadra-Trac II<sup>®</sup> 4WD System** incorporates the NV245 transfer case and the all new 4-Wheel Brake Traction Control System (4BTC) for superior on- and off-road capability. When wheel slippage is detected, up to 100% of the available 375 lb-ft of torque is instantly routed to the axle with the most traction. When facing more challenging road conditions, an easy shift into low gear provides even greater performance on steep slopes, over loose rocks and along treacherous slippery surfaces.

**Quadra-Trac I<sup>®</sup> 4WD System<sup>1</sup>**, with the NV140 single-speed transfer case, gives you excellent vehicle control along with convenient operation. You never need to shift a lever to enjoy the benefits of continuous 4WD. With the help of 4BTC, torque is distributed between the wheels to help you overcome difficult road conditions.



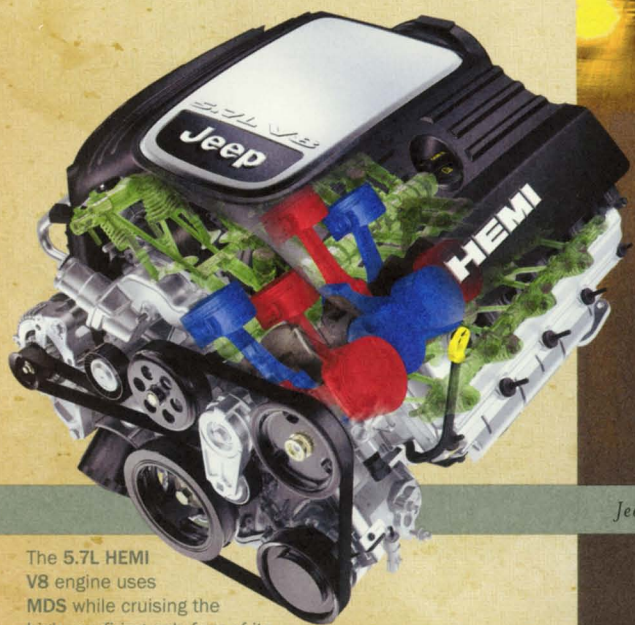
- **Quadra-Trac II 4WD** is standard on Limited and available on Laredo. Pair it with the 4.7L Power Tech V8 engine
- **Quadra-Trac I<sup>®</sup> 4WD** is standard on Laredo. It is paired with the 3.7L Power Tech V6 engine

<sup>1</sup> Quadra-Trac I is not appropriate for conditions or situations where low range is required — such as severe off-road driving.



# ADVANCED CLASS-LEADING HEMI® V8

Introducing the supremely powerful 5.7L HEMI V8 engine with its fuel-efficient\* Multi-Displacement System (MDS). Advanced technology allows the HEMI engine to breathe like a highly trained athlete thanks to uniquely designed hemispherical combustion chambers. These dome-shaped firing chambers burn fuel more effectively and efficiently while supplying amazing horsepower and torque. In fact, our new HEMI V8 delivers awesome BEST-IN-CLASS<sup>1</sup> performance of 330 hp and 375 lb-ft of torque.



The 5.7L HEMI V8 engine uses MDS while cruising the highway, firing only four of its eight cylinders, shown in blue above. This allows for excellent fuel efficiency while retaining its BEST-IN-CLASS horsepower and torque.

\* 14 city/21 highway EPA estimated miles per gallon.



# POWERFUL ENGINE OPTIONS

The **235-horsepower 4.7L Power Tech V8** engine is standard on Grand Cherokee Limited.

Dual knock sensors enhance its efficiency and power. It can be paired with

Quadra-Trac II<sup>®</sup> 4WD or Quadra-Drive II<sup>®</sup> 4WD with ELSD.



The **210-horsepower 3.7L Power Tech V6** engine is standard on Grand Cherokee Laredo. This efficient, durable and strong performer operates smoothly and quietly.



Its standard 4WD match is Quadra-Trac I<sup>®</sup> with full-time, single-speed 4WD power.



Pair your Grand Cherokee with the **5.7L HEMI<sup>®</sup> V8** engine, and you'll enjoy a **BEST-IN-CLASS** 4x4 towing capacity of 7,200 lb when properly equipped.

\* Based on Ward's 2004 Middle Sport/Utility Vehicle segments and published industry information.



# BUILT-IN SAFETY SYSTEMS

## [A] SmartBeam™ Intelligent Headlamp System

- Exclusively available on Grand Cherokee Limited
- Uses a sophisticated microprocessor that automatically and quickly adjusts high-beam brightness and intensity, depending on surrounding nighttime light sources or traffic
- An important aid in pedestrian and driver safety



## [A] SMARTBEAM INTELLIGENT HEADLAMP SYSTEM



## [B] Tire Pressure Monitoring System

- Instrument cluster warning light appears if any tire loses air pressure
- Available premium monitoring system (shown) transmits individual tire pressure



## UniFrame Construction

- Now incorporates 44% high-strength steel, which leads to a 60% increase in overall body stiffness, plus a noticeable reduction in cabin noise
- Stronger, denser safety cage provides greater protection

## [B] TIRE PRESSURE MONITORING SYSTEM/UNIFRAME CONSTRUCTION





## [C] BRAKE SYSTEMS/STABILITY AND TRACTION MANAGEMENT



## [C] Four-Wheel Antilock Brake System (ABS)

- Helps the driver maintain steering control while braking on slippery surfaces
- State-of-the-art electronics provide faster system response than ever before

## 4-Wheel Brake Traction Control (4BTC)

- Utilizes ABS to limit wheel slip and improve control during acceleration
- Augments Quadra-Trac I® and Quadra-Trac II® by enabling torque transfer capability to wheels for improved traction management
- Standard on 4WD models

## Electronic Stability Program (ESP)

- Sophisticated sensors compare vehicle performance with perceived driver intent
- When needed, can immediately initiate corrective actions in order to help maintain vehicle directional stability
- Enhances the benefits of ABS, 4BTC and the Electronic Throttle Control when equipped on the 5.7L HEMI® V8 engine.
- Optional on 4WD models

## [D] INTEGRATED RESTRAINT SYSTEM/AIR BAGS/WIPERS



## [D] Integrated Restraint System

- Seat belts, air bags\* an energy-absorbing steering column, steering wheel and body structure deliver a coordinated effort to help protect vehicle occupants
- Data provided by the Occupant Classification System† (OCS) lets the system decide whether it's necessary to deploy the front-passenger air bag completely, at lower levels or not at all



## Advanced Multistage Air Bags\*

- Driver and front-passenger advanced multistage air bags are standard
- Supplemental side-curtain air bags are optional

## Rain-Sensitive Wipers

- Sensors on the windshield detect moisture and wipers are automatically deployed
- Standard on Limited

\* Certified to the Federal Regulation for automatic passenger occupant classification. Always use seat belts. Children 12 and under should always be in a backseat correctly using an infant or child restraint system, or the seat belt positioned correctly for the child's age and weight.

† The OCS determines the conditions for activation or deactivation of the passenger-side front air bag based upon the weight of the occupant. It may not activate the air bag if the occupant has incorrect seating posture or is moving in the seat. You should observe the air bag lamp to determine if the OCS is deciding properly. Passenger should sit properly in the seat with the seat belt fastened at all times.



# FRESH STRONG AUTHENTIC

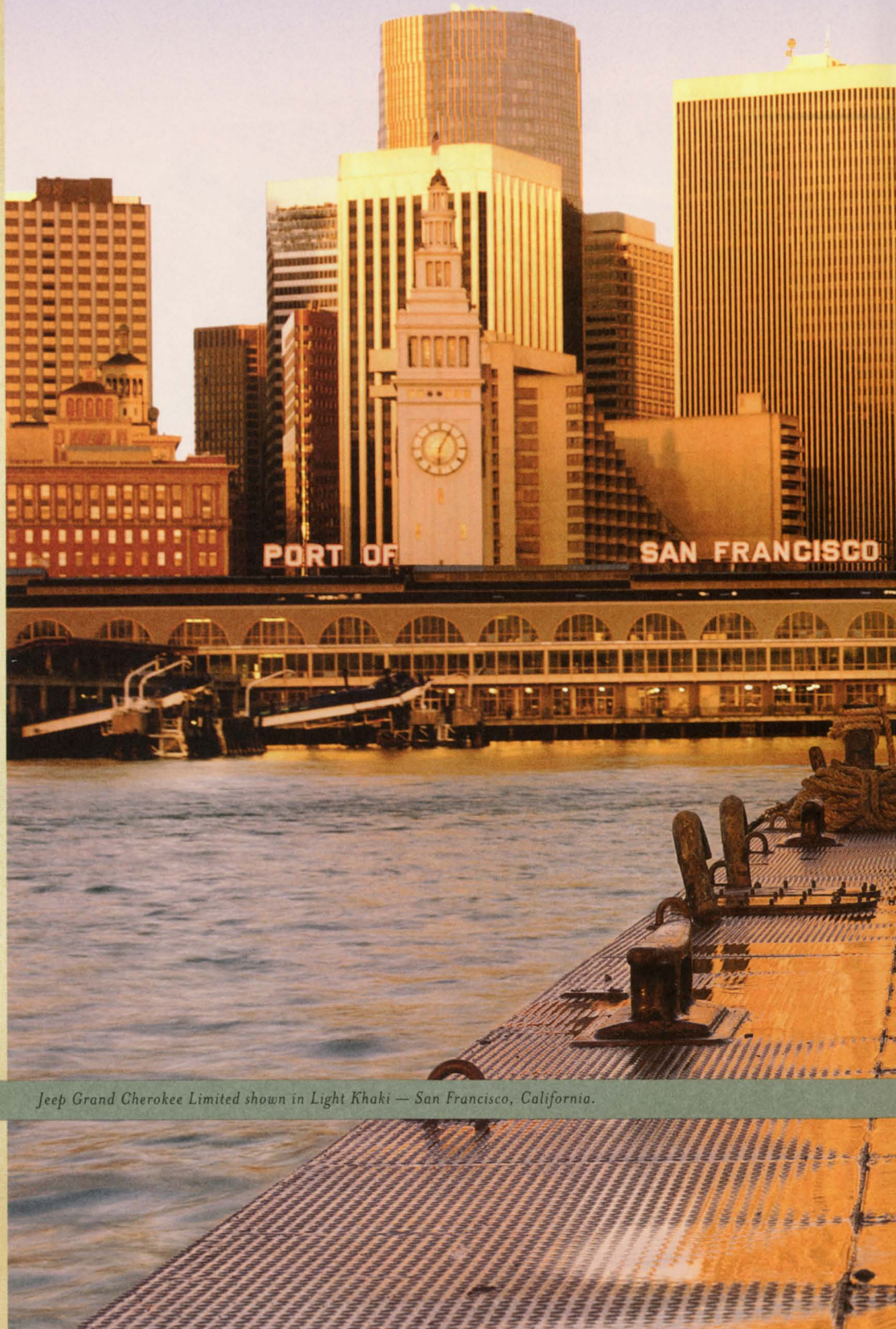
It's an off-road legend that looks right at home in front of a five-star restaurant. Now the all new 2005 Jeep Grand Cherokee Limited displays its Jeep brand heritage more than ever. And its artful new design is smartly refined, including the fresh geometric shape of the signature seven-slot grille, the new dual round headlamps, the aerodynamic raked windshield, the boldly flared wheelhouse design, the external hinges on the rear liftgate and a squared-up back end that houses eye-catching taillamps. All new chrome details add an elegant touch to Grand Cherokee Limited's exceptional style.



Limited's chrome-clad grille is flanked by dual round headlamps integrated into the front fascia.



Rear taillamps are more prominent and sparkle with progressive red and clear lenses.



Jeep Grand Cherokee Limited shown in Light Khaki — San Francisco, California.





The 60-story Golden Gate Bridge in California's **San Francisco Bay** is an instantly recognizable landmark that spans the world's largest deep-water harbor.



# ORGANIZED DISTINCTIVE LUXURY

With important vehicle controls comfortably within reach, 2005 Jeep Grand Cherokee Limited also places luxury and convenience close at hand. An Electronic Vehicle Information Center provides helpful personalized data. Royale leather-trimmed seats with unique new leather inserts are supportive, yet very relaxing. The new two-tone instrument panel with Sycamore woodgrain trim is appealing to the eye. Limited's Boston Acoustics™ Premium Sound System has the power to make an audiophile's dream come true.



- The optional **GPS Navigation Radio** with 5.8-inch full-screen color map display includes a six-disc CD/MP3 player
- The optional **power sunroof** offers one-touch express operation



*Jeep Grand Cherokee Limited high-contrast instrument panel shown in Light Graystone and Dark Khaki.*







# SPACIOUS INTERIOR COMFORT

Attention to detail is the hallmark of the 2005 Jeep Grand Cherokee Limited. All passengers can enjoy comfortable leather-trimmed seats, now constructed with dual-density foam. Plus, they will have more room to stretch out due to the larger front seat track and increased rear-seat leg room. Optional heated seats provide extra warmth. To help protect your first-class investment, the Sentry Key® Theft Deterrent System makes it virtually impossible to drive away without a valid key.



- The Mini-Overhead Console is updated to include a covered sunglass storage bin in addition to map lamps and power sunroof switches
- Controls for the Uconnect™ Hands-Free Communication System are placed conveniently under the auto-dimming rearview mirror



*Jeep Grand Cherokee Limited seating shown in Medium Khaki leather with Dark Khaki inserts.*

## STANDARD LIMITED FEATURES

- 4.7L Power Tech V8 engine with multispeed automatic transmission
- Quadra-Trac II® 4WD with low-range operation (on 4x4 models)
- Independent front/multilink rear suspension system
- 4-Wheel Brake Traction Control (4BTC) on all 4x4 models
- Boston Acoustics™ Premium Sound System
- AM/FM stereo radio and six-disc CD/MP3 player
- Infrared Dual Zone Climate Control with sun sensors and rear-seat heat and air-conditioning outlets
- Leather-wrapped steering wheel with mounted audio controls





- Cup holders for rear passengers pull out from the base of the seat for utility, yet fold discreetly away when not in use, leaving the area clean and unencumbered



- Pull the foldaway rear armrest down and you have an additional storage bin — a nice convenience for rear-seat passengers

Remember to properly secure all cargo.

- Vehicle Security System
- Reversible, waterproof cargo floor panel
- Tire Pressure Monitoring System

#### AVAILABLE LIMITED FEATURES

- 5.7L HEMI® V8 engine with MDS
- Quadra-Drive II® 4WD with front and rear ELSD
- Electronic Stability Program (ESP)
- ParkSense™ Rear Back-up System
- SIRIUS Digital Satellite Radio
- UConnect™ Hands-Free Communication System
- SmartBeam™ intelligent headlamp system
- Full-screen GPS Navigation Radio
- DVD Rear-Seat Entertainment System
- Premium Tire Pressure Monitoring System





*Jeep Grand Cherokee Limited shown in Midnight Blue and Grand Cherokee Laredo shown in Bright Silver — Wishon Reservoir, California.*







# ATHLETIC REFINED RIGHT-SIZED

With all new road-commanding features including a newly designed suspension system, every 2005 Jeep Grand Cherokee Laredo 4x4 equipped with Quadra-Trac II<sup>®</sup> can help you conquer any rugged terrain. When you transition to pavement, Grand Cherokee's new variable-ratio rack-and-pinion steering gives you nimble control. Antilock brakes and high-performance halogen headlamps are standard features that make Laredo a refined value for every discriminating driver. Plus, with a larger seat track and more rear-seat leg room than ever before, Laredo raises passenger comfort to a new level.



The remote-operated flipper glass opens with a single, smooth motion for easy access to cargo area.



#### SELECT LAREDO FEATURES

- Quadra-Trac I<sup>®</sup> 4WD\* with a single-speed transfer case is standard
- Quadra-Trac II<sup>®</sup> 4WD with low-range operation is available

\*Quadra-Trac I is not appropriate for conditions or situations where low range is required – such as severe off-road driving.

- 4-Wheel Brake Traction Control is standard on 4x4 models, automatically helping to manage wheel slippage and vehicle control
- Improved UniFrame construction strengthens safety cage and reduces noise and vibration





just one of the many Jeep Accessories available from Mopar — Moab, Utah.

- **Antilock Brake System** helps the driver manage steering control on slippery surfaces; state-of-the-art electronics provide a quicker response than ever before
- **Variable-ratio rack-and-pinion steering** helps maintain directional stability at highway speeds and provides a tighter turning diameter for parking maneuvers

- **High-performance halogen headlamps** provide better down-road vision with a 25% improvement in low-beam strength and a 40% increase in high-beam strength

From bike and cargo carriers, to in-vehicle entertainment, to outside protection, Authentic Jeep Accessories by Mopar can enhance your Grand Cherokee and your lifestyle. Sold exclusively at your Jeep dealership. Visit [mopar.com/jeep](http://mopar.com/jeep) or see your dealer.





# FIRST-CLASS CARGO CARRIER

The superior standard and available features on the 2005 Jeep Grand Cherokee Laredo put plenty of value in its first-class status. A new air conditioning and heating system increases airflow throughout the cabin and provides added comfort for all passengers. Storage bins, cup holders, map pockets, a larger glove compartment and two power outlets add convenience for on- and off-road travelers. And a generous maximum cargo capacity of 67.4 cu ft hauls plenty of gear.



- The new reversible waterproof cargo insert incorporates a washable, lined tray on one side and is nicely carpeted on the other
- Underneath the cargo insert is a convenient storage bin that can stow items safely out of the way

Remember to properly secure all cargo.



Jeep Grand Cherokee Laredo interior shown in Medium/Dark Khaki with Medium Khaki cloth seats.

## STANDARD LAREDO FEATURES

- 3.7L Power Tech V6 engine with five-speed automatic transmission
- Quadra-Trac I® single-speed 4WD
- Independent front/multilink rear suspension system
- 4-Wheel Brake Traction Control (4BTC) on all 4x4 models
- Variable-ratio rack-and-pinion steering, power-assisted, with tilt steering column
- AM/FM stereo radio and CD player
- Manual Climate Control with rear-seat heat and air conditioning outlets
- Tire Pressure Monitoring System
- Sentry Key® Engine Immobilizer
- Reversible waterproof cargo floor insert





- The 60/40 split-folding rear seats now fold down in an instant. Each side flips down in one single step to conveniently enlarge your cargo area.

#### AVAILABLE LAREDO FEATURES

- 4.7L Power Tech V8 engine with multispeed automatic transmission
- Quadra-Trac II® 4WD with low-range operation
- Electronic Stability Program (ESP)
- UConnect™ Hands-Free Communication System
- Boston Acoustics™ Premium Sound System
- AM/FM stereo radio and six-disc CD/MP3 player
- Leather-wrapped steering wheel with mounted audio controls
- Royale leather-trimmed seats
- Vehicle Security System
- Auto-dimming exterior rearview mirrors
- SIRIUS Satellite Radio
- Full-screen GPS Navigation Radio



# EXCEPTIONAL AVAILABLE FEATURES

You have plenty of opportunities to personalize your 2005 Jeep Grand Cherokee. A variety of special features are offered to increase your comfort and enjoyment every time you step inside.



## [A] DVD Rear-Seat Entertainment System

- Simply fold down the seven-inch color LCD screen from its secure position on the interior roof, then insert your DVD into the player located in the center console
- Available on Limited and Laredo

## [A] DVD REAR-SEAT ENTERTAINMENT SYSTEM



## [B] ParkSense™ Rear Back-up System\*

- Helps you detect possibly unseen obstacles that may be in your way while backing up. Four ultrasonic sensors located in the rear bumper do the work when your vehicle is in Reverse at speeds below 10 mph
- Warning lamps (shown), located in the headliner above rear window and visible in rearview mirror, help alert driver
- Available on Limited



## [B] PARKSENSE™ REAR BACK-UP SYSTEM



## SmartBeam™ Intelligent Headlamp System (See page 8)

- Uses breakthrough technology to automatically adjust the brightness and intensity of your high beams during nighttime driving
- Illumination paths are increased for both low and high beams, helping you see more of what lies ahead
- Available on Limited

\* Detects most obstacles. As with all electronically controlled systems, care is advised.



[C] UCONNECT™ HANDS-FREE COMMUNICATION SYSTEM



[C] UConnect™ Hands-Free Communication System with Bluetooth™ technology

- Uses sophisticated Bluetooth technology to seamlessly transfer a call from your own compatible wireless phone to the UConnect system. Your mobile communications are safely hands-free
- Available on Limited and Laredo

Jeep Memory System (Not pictured)

- Provides customization features to suit two different drivers, including driver's seat position, 10 AM and 10 FM radio stations (with the radio pretuned to the station playing during the driver's most recent outing), exterior mirrors and accelerator and brake pedal positions
- Standard on Limited



[D] IN-DASH AM/FM BOSTON ACOUSTICS™ PREMIUM SOUND SYSTEM



[D] In-dash AM/FM stereo radio with six-disc CD/MP3

- Has the capability to provide hours of prerecorded music without ever changing a CD
- Standard on Limited. Available on Laredo

Boston Acoustics™ Premium Sound System

- With six Boston Acoustics speakers and 276-watt digital amplifier, this system incorporates advanced technology to authentically reproduce voices and musical instruments with precision
- It is the premium choice for a distortion-free sound experience
- Standard on Limited. Available on Laredo

SIRIUS Satellite Radio

- Lets you choose from more than 40 different stations of music, plus 60 stations of news, traffic, weather, sports and entertainment. All day, every day, SIRIUS sends over 120 streams of commercial-free broadcasts to three state-of-the-art satellites that continuously orbit around the earth, always providing crisp, digital sound. A one-year subscription is included
- Available on Limited and Laredo

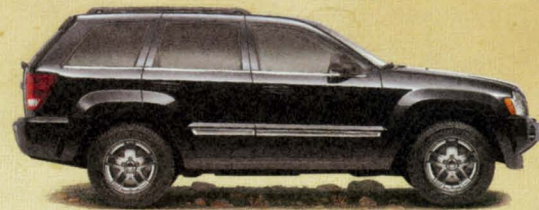
GPS Navigation Radio (See page 12)

- Features a 5.8-inch full-screen color map display with route guidance features, including voice prompts. Using an integrated GPS antenna, the system is always able to identify your location. You can even store favorite routes and destinations. Includes the AM/FM stereo radio with its six-disc CD/MP3 player
- Available on Limited and Laredo





Light Khaki



Brilliant Black



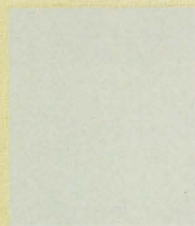
Inferno Red



Bright Silver



Midnight Blue



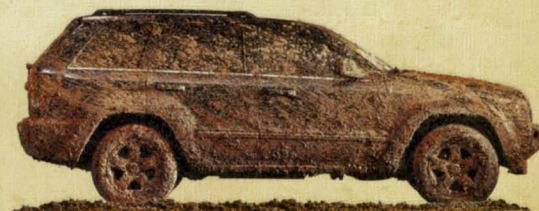
Stone White



Dark Khaki



Deep Beryl Green



Mud

NOTE: Limited shown.

Due to occasional printing irregularities, the colors shown may vary slightly from actual hues (especially Mud).





17-inch Orbitek  
Cast-Aluminum  
painted Satin Silver

Grand Cherokee Laredo  
(standard)



17-inch Ronin II  
Cast-Aluminum  
with machined face

Grand Cherokee Limited  
(standard)



17-inch Moduflex  
Chrome-Clad  
Cast-Aluminum

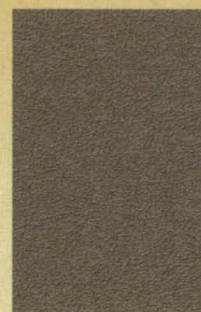
Grand Cherokee Limited  
(available)



Majesty Cloth/  
Albi Cloth  
Medium Khaki  
Grand Cherokee  
Laredo (standard)



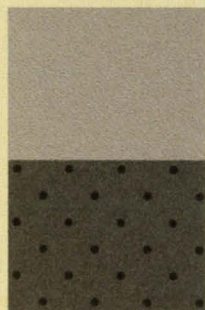
Majesty Cloth/  
Albi Cloth  
Medium Slate Gray  
Grand Cherokee  
Laredo (standard)



Royale Leather Trim  
Medium Khaki  
Grand Cherokee  
Laredo (available)



Royale Leather Trim  
Medium Slate Gray  
Grand Cherokee  
Laredo (available)



Royale Leather Trim  
Light Graystone/  
Royale Leather  
with Axis Perforated  
Inserts – Dark Khaki  
Grand Cherokee  
Limited (standard)



Royale Leather Trim  
Medium Khaki/  
Royale Leather with  
Axis Perforated  
Inserts – Dark Khaki  
Grand Cherokee  
Limited (standard)



Royale Leather Trim  
Medium Slate Gray/  
Royale Leather with  
Axis Perforated  
Inserts – Slate Gray  
Grand Cherokee  
Limited (standard)



Limited chrome bodyside trim



Laredo bodyside trim in Jet Black



**POWERTRAIN**

Engine	3.7L Power Tech V6	4.7L Power Tech V8	5.7L HEMI® V8
<b>Horsepower</b> (SAE net @ rpm)	210 @ 5,200	235 @ 4,500	330 @ 5,000
<b>Torque</b> (net lb-ft @ rpm)	235 @ 4,000	305 @ 3,600	375 @ 4,000
<b>Axle Ratio</b>	3.07:1	3.73:1	3.73:1
<b>Displacement</b> (cu in)	226	287	345
<b>Multi-Displacement System</b>	Deactivates four cylinders (1, 4, 6, and 7) during steady speed, low-acceleration and shallow grade-climbing conditions. Fuel economy is improved 5 percent to 20 percent, depending on driving habits (5.7L HEMI V8)		
<b>Fuel System</b>	Sequential multipoint electronic fuel injection		
<b>Transmission</b>	Five-speed automatic with Electronic Range Select, Tow/Haul feature, adaptive electronic control, Brake-Park Interlock and electronically modulated converter clutch (3.7L)  Multispeed automatic with five forward speeds, alternate second gear, Electronic Range Select, Tow/Haul feature, Brake-Park Interlock and electronically modulated converter clutch (4.7L, 5.7L)		

**FOUR-WHEEL-DRIVE SYSTEM** (Transfer Case)

<b>Quadra-Trac I® NV140<sup>®</sup></b>	Full-time; single-speed with 48/52 front/rear torque split and open front, center, and rear differentials (3.7L)
<b>Quadra-Trac II® NV245</b>	Active full-time; two-speed with low range (2.72:1) and neutral, variable with 48/52 front/rear default torque split, electronically controlled clutch pack coupling in center differential and open front and rear differentials (4.7L)
<b>Quadra-Drive II® NV245</b>	Active full-time; two-speed with low range (2.72:1) and neutral, variable with 48/52 front/rear default torque split, electronically controlled clutch pack coupling in center differential and front and rear Electronic Limited-Slip Differentials (4.7L, 5.7L)

**BODY/SUSPENSION/CHASSIS**

<b>Body Design</b>	UniFrame construction: All-steel body sheet metal and frame structural members welded and bonded into a single unit
<b>Suspension</b>	Front: Short-/long-arm (SLA) independent design with gas-charged, twin-tube coil-over shock absorbers, upper and lower control arms and stabilizer bar  Rear: Live axle, five-link with tubular track bar twin-tube coil-over shock absorbers and stabilizer bar
<b>Steering</b>	Rack-and-pinion, power-assisted; variable ratio: 15.8:1, 13.9:1. Turns: 2.85, lock-to-lock. Turning Diameter: 36.7 ft, curb-to-curb
<b>Brake System</b>	Front: Power-assisted disc brakes; 12.9" rotor diameter  Rear: Power-assisted disc brakes; 12.6" rotor diameter  Antilock Brake System (ABS): Three-channel with active wheel-speed sensors and Electronic Brake-Force Distribution (EBD) (2WD)  4-Wheel Brake Traction Control (4BTC): Four-channel antilock with active wheel-speed sensors, traction control, deactivation switch and EBD (4WD)  Electronic Stability Program (ESP): Four-channel antilock with active wheel-speed, vehicle-speed, steering-wheel-angle, yaw-rate, and lateral-acceleration sensors, vehicle stability management, traction control, deactivation switch and EBD (4WD)

Jeep, Trail Rated, Grand Cherokee, Liberty, Wrangler, Laredo, HEMI, Power Tech, Quadra-Trac I, Quadra-Trac II, Quadra-Drive II, Vari-Lok, Sentry Key, ParkSense, UConnect, Mopar, Camp Jeep and the Jeep grille are trademarks of DaimlerChrysler Corporation. HomeLink is a registered trademark owned by Johnson Controls, Inc. SIRIUS, the dog logo and SIRIUS stream names are logos and trademarks of SIRIUS Satellite Radio Inc. SmartBeam is a trademark of Gentex Corporation. Quiet Steel is a registered trademark of Material Sciences Corporation. Boston Acoustics is a trademark of Boston Acoustics, Inc. The Bluetooth word mark is owned by the Bluetooth SIG, Inc., and any use of such marks by the DaimlerChrysler Corporation is under license.



NOTE: Jeep Grand Cherokee Limited shown in Light Khaki.

**EXTERIOR DIMENSIONS** (inches unless otherwise specified)

<b>Length</b>	
Wheelbase	109.5
Overall Length	186.7
<b>Width</b>	
Overall Width	84.2
Track, front/rear	62.0/62.0
<b>Height, overall</b>	67.4
<b>Ground Clearance</b> (at base curb weight)	8.5
Approach Angle/Departure Angle	34.1°/27.1°
Breakover Angle	20.6°

**INTERIOR DIMENSIONS** (inches unless otherwise specified)

<b>Head Room</b> , front/rear	39.7/39.3
<b>Leg Room</b> , front/rear	41.7/35.5
<b>Shoulder Room</b> , front/rear	59.1/58.5
<b>Hip Room</b> , front/rear	57.6/60.6
<b>Cargo Volume</b> (cu ft), rear seat up/folded	35.0/67.4
<b>Seating Capacity</b>	5

**CAPACITIES/WEIGHTS**

<b>Fuel Tank</b> (gal)	20.5
<b>Base Curb Weight</b> (lb), 2WD/4WD	4,196/4,454
<b>Payload Capacity</b> (lb) (with all occupants and cargo)	
<b>Gross Vehicle Weight Rating</b> (lb)	
3.7L Power Tech V6, 2WD/4WD	5,700/5,900
4.7L Power Tech V8, 2WD/4WD	5,850/6,100
5.7L HEMI V8, 4WD	6,150

**TOWING DATA**

<b>Gross Trailer Weight Rating</b> (lb)	
3.7L Power Tech V6, 2WD/4WD	3,500
4.7L Power Tech V8, 2WD/4WD	6,500
5.7L HEMI V8, 4WD	7,200
<b>Tongue Load Limit</b> (lb) (V6/V8)	525/750
<b>Trailer Tow Group</b>	Includes frame-mounted hitch receiver and 4-pin adapter (V6); Includes frame-mounted receiver hitch and wiring harness with 7- to 4-pin adapter (V8)

**RESTRICTION:** Trailer frontal area limitation of 64 sq ft; maximum trailer length of 25 ft (Class II) or 30 ft (Class IV); trailer sway control and low-profile mirrors are recommended. This chart is meant to serve as a quick and easy reference guide on how to properly equip your Jeep Grand Cherokee for towing. For specific details, discuss your plans with your Jeep dealer, who will help you select the right equipment to meet your specifications.

All product illustrations, specifications and competitive comparisons are based upon current information at the time of publication approval. Although descriptions are believed correct, complete accuracy cannot be guaranteed. DaimlerChrysler reserves the right to make changes at any time, without notice or obligation, in prices, specifications, equipment, colors and materials, and to change or discontinue models. Some of the equipment shown or described throughout this catalog is available at extra cost. Available in U.S. markets only. See your dealer for the latest information.



	CPOS™ PACKAGE						
	LAREDO	E	F	X	LIMITED	G	K
<b>CAPABILITY</b>							
<b>4x4 Popular Equipment Group</b> — Includes Off-Road Group, Quadra-Drive II,* and Trailer Tow Group (4WD models only)							O
<b>Axle</b> — Vari-Lok® rear with variable and progressive locking features (2WD models only)			O	O	O	O	
<b>Electronic Brake System</b>							
— Antilock Brake System (ABS) (included on 2WD models)		P	P	P	P	P	
— 4-Wheel Brake Traction Control (4BTC) (included on 4WD models)		P	P	P	P	P	
— Electronic Stability Program (ESP) (4WD models only)		O	O	O	O		*
<b>Engines</b>							
— 3.7L Power Tech V6		*	*	*			
— 4.7L Power Tech V8			O	O	*	*	
— 5.7L HEMI® V8 (4WD models only)							O
<b>Off-Road Group</b> — Includes fuel tank, transfer case and front suspension skid plates, black painted tow hooks (2 front/1 rear), P245/65R17 OWL all-terrain tires (requires Quadra-Trac II*) (Included with 4x4 Popular Equipment Group)			O	O	O		P
<b>Tires</b>							
— P235/65R17 103S Goodyear Wrangler HP black-sidewall all-season		*	*	*	*		
— P245/65R17 105S Goodyear Wrangler SRA outline-white-letter all-terrain		O	O	O	O	O	
— P235/60R17 105V Goodyear Eagle LS black-sidewall all-season performance							*
<b>Trailer Towing</b>							
— Trailer Tow Group, Class II (requires V6)		O	O	O			
— Trailer Tow Group, Class IV (Included with 4x4 Popular Equipment Group) (requires V8)			O	O	O		O/P
<b>Transfer Case</b> (4WD models only)							
— Quadra-Trac I® single-speed <sup>11</sup> (included with 3.7L V6 engine)		*	P	P			
— Quadra-Trac II® 4WD (included with 4.7L V8 engine)			P	P	*	*	
— Quadra-Drive II® 4WD (included with 5.7L V8 engine and 4x4 Popular Equipment Group)							P
<b>EXTERIOR</b>							
<b>Cargo Convenience Group</b> — Includes roof rack crossbars and cargo-area compartment cover		O	O	*	*	*	
<b>Lighting Exterior</b>							
— Automatic headlamps (ON/OFF) includes programmable headlamps-on-with-wipers, parade mode and delay features			*	*	*	*	
— SmartBeam™ intelligent headlamp high-beam control system							*
— Round fog lamps integral with front fascia, water resistant			*	*	*	*	*
<b>Wiper System</b>							
— Variable-intermittent and speed-sensitive features; rear window wiper/washer with fixed intermittent feature		*	*	*			
— Rain-sensitive intermittent automatic wiper system with speed-sensitive features; rear window wiper/washer with fixed intermittent feature						*	*
<b>INTERIOR</b>							
<b>Air Conditioning</b>							
— Manual Temperature Control with rear-seat outlets		*	*	*			
— Infrared Dual Zone Climate Control with solar sensors and rear-seat outlets					*	*	
<b>Cargo Area</b> — Reversible Floor Panel with storage tray and 4 cargo tie-down loops in floor, quarter trim, cargo storage bin and storage net in trim panel, 2 utility hooks, 2 forward storage bins for jack, tools and cargo		*	*	*	*	*	*

**INTERIOR (continued)**

	CPOS™ PACKAGE						
	LAREDO	E	F	X	LIMITED	G	K
<b>Jeep Memory System</b> — Radio station presets, last-station settings, driver's seat position, exterior mirrors, and pedal-position settings for two drivers							* *
<b>Mirrors, Interior</b>							
— Day/Night rearview		*					
— Auto-dimming rearview			*	*	*	*	*
<b>Pedals</b>							
— Power adjustable			O	O			
— Power adjustable with memory						*	*
<b>Seats</b>							
— Rear 60/40 single-action split-folding seatbacks with outboard head restraints		*	*	*	*	*	*
— Rear foldaway center armrest with storage					*	*	
— Heated front seats (requires power adjustable pedals)				O	O		*
— Front continuously variable manual lumbar adjustment		*	*	*	*	*	*
— 8-way power driver's, manual front-passenger seat adjustment		*					
— 8-way driver's, 4-way front-passenger power seat adjustment			*	*			
— 8-way driver's memory, 4-way front-passenger power seat adjustment						*	*
<b>Sound Systems</b>							
<b>Entertainment/Communication</b>							
— UConnect™ Hands-Free Communication System				O			*
— SIRIUS Satellite Radio			O	O	O	O	O
— DVD Rear-Seat Entertainment System with DVD player in center floor console, 2 wireless headphone jacks, and Rear Seat Video™ screen in overhead console					O	O	O
<b>Radios</b>							
— AM/FM stereo radio with CD player and clock		*	*	*			
— AM/FM/RDS stereo radio with 6-disc CD/MP3 player and clock			O	O	*	*	
— Full-screen GPS Navigation Radio with AM/FM RDS stereo, 6-disc CD/MP3 player, and clock					O		O
<b>Speakers</b>							
— 6-speaker system		*					
— Boston Acoustics™ Premium Sound System includes six Boston Acoustics speakers and 276-watt digital amplifier			*	*	*	*	*
<b>Sunroof</b> — Power with express-open/-close and comfort-stop features		O	*	O	*		*
<b>SAFETY/SECURITY</b>							
<b>Air Bags<sup>2)</sup></b>							
— Advanced multistage, driver and front-passenger, deploy during a severe-force frontal or near-frontal impact		*	*	*	*	*	*
— Supplemental side-curtain, provide additional protection to outboard occupants in the event of a collision		O	O	O	O	O	O
<b>ParkSense™ Rear Back-up System<sup>3)</sup></b> — With shut-off switch						O	O
<b>Premium Tire Pressure Monitoring System</b> — Features tire valve stem-mounted sensors that monitor and display (in EVIC) individual tire pressures for all four rotating and warns if pressure is high or low of the preset range						O	O
<b>Remote Keyless Entry System</b> — Operates door and liftgate locks and liftgate flipper glass release; includes Sentry Key® Engine Immobilizer		*	*	*	*	*	*
<b>Speed Control</b> — Electronic with steering wheel-mounted controls		*	*	*	*	*	*
<b>Tire Pressure Monitoring System</b> — Features tire valve stem-mounted sensors that monitor pressure and display warning in instrument cluster if pressure is low or high of the preset range		*	*	*	*	*	*
<b>Vehicle Security System</b> — Monitors doors, flipper glass and liftgate		*	*	*	*	*	*

\* = Included, P = Available within package noted, O = Optional. <sup>11</sup> Quadra-Trac I is not appropriate for conditions or situations where low range is required — such as severe off-road driving. <sup>2)</sup> Certified to the Federal Regulations for automatic passenger occupant classification. Always use seat belts. Children 12 and under should always be in a backseat correctly using an infant or child restraint system, or the seat belt positioned correctly for the child's age and weight. <sup>3)</sup> Detects most obstacles. As with all electronically controlled systems, care is advised.



# EXPERIENCE NATURAL THRILLS

The Jeep brand hosts hundreds of thrilling 4x4 events across the country. These exciting events give Jeep Grand Cherokee owners the opportunity to experience the true capabilities of their 4x4 vehicles. A spirit of friendship and fun drive these gatherings, where camaraderie is king and Jeep peak experiences rule the day. Jeep Life begins when you share the joy of Jeep vehicle ownership.



*Jeep Grand Cherokee Limited shown in Midnight Blue — Tom's Place, California.*

Fresh air mingles with fresh smiles and new pats on the back as you overcome obstacles on the trail. Once conquered, these tribulations become tales of the trail — legendary exploits that only get better with age.

Camp Jeep® and Camp Jeep California have been annual weekend-long funfests for adults and children alike. Jam-packed with four-wheeling, adventure sports, entertainment and more, Camp Jeep is arguably one of the world's greatest owner celebrations. [jeep.com/campjeep](http://jeep.com/campjeep)







## JEEP GEAR

*Gifts and Gear for the Jeep Enthusiast*

Jeep Gear is a handpicked collection of authentic wearables, sports equipment, luggage and electronics that are made for the Jeep enthusiast. All items are just as rugged and durable as your Jeep vehicle. Go to [jeep.com/gear](http://jeep.com/gear) to purchase these items.

### SNOWDRIFT 24-CAN COOLER

Proof that Jeep products do have a soft side. Holds 24 12-oz beverage cans and has extra space for ice and other items. Features padded shoulder strap, side pockets, and large mesh storage pocket with organizer. Available in Orange.

CNP12



### FIRST-UP HEX DOME TENT

Get cozy fast at any campsite. This 10' x 8'5" dome tent sets itself up in less than one minute. Features include four windows, two doors, two hanging cup holders, two Jeep organizer pockets and a center height of 53". Superior weather protection is provided by the GoBe Dry™ Ultimate Rain Protection System by NorthPole. Available in color combination shown.

CNP20



The eastern Sierra Nevada Mountains offer excellent travel and camping opportunities through forested back roads, over fresh springs and high into Rocky Mountain trails.

Jeep Jamboree USA lets you experience the great outdoors on three-day outings with trained trail guides. Jeep Jamboree USA offers over 30 events where you can test your rig and share stories at the evening meal. [jeep.com/jamboree](http://jeep.com/jamboree)





# STRONG LEGENDARY LEADERSHIP

It's the stuff of legend: The Willys MB from WWII, its spirit forged by the fire of combat and honed in the heat of battle, seared its way into history as an off-road freedom fighter. The MB led to the 1949 Willys Wagon — the very first 4WD production wagon. Today, the off-road legend continues, just as an exciting on-road legend begins with the all new 2005 Jeep Grand Cherokee. Undeniably capable off-road, now with unexpectedly superior performance on-road. A fresh re-design for Jeep Liberty includes a more-rugged, squared-shouldered Renegade and bold new front grille treatment for Limited Edition and Sport. Joining this all-star cast is the longer Jeep Wrangler Unlimited. These Jeep brand modern-day marvels forge new inroads of capability in the on-road arena.



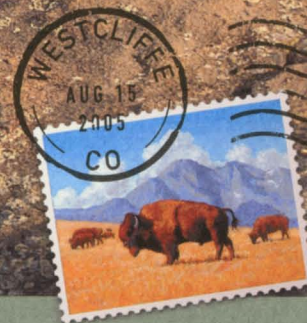
The Jeep Wagoneer is known as the prototype of today's modern luxury SUVs. When it was introduced in 1962, the Wagoneer was the industry's first four-wheel-drive vehicle with an available automatic transmission. Shown above, a classic 1989 Jeep Grand Wagoneer.



Jeep Wrangler Unlimited in Flame Red, Liberty Renegade in Black, and Grand Cherokee Limited in Light Khaki — Wet Mountain







alley, Colorado.

Majestic Bison once roamed the Wet Mountain Valley. Today, modern ranches and beautiful scenic areas offer outdoor adventure and plentiful recreation opportunities.





**Jeep**

JEEP IS A REGISTERED TRADEMARK OF DAIMLERCHRYSLER CORPORATION. FORM NO. 74-383-2532 08/04 (881M) LITHO IN USA



# INSPIRED ALL NEW DESIGN

Everything is new in the 2005 Jeep Grand Cherokee. Its contemporary, athletic appearance is new. Its detailed, luxurious cabin designed for the ultimate in driver and passenger comfort is new. As for new capabilities? The available 5.7L HEMI<sup>®</sup> V8 engine with its Multi-Displacement System and jaw-dropping 330 horsepower is totally new. There's also the available all new 2005 Quadra-Drive II<sup>®</sup> 4WD with Electronic Limited-Slip Differentials, the most capable Grand Cherokee 4x4 system ever. The available SmartBeam<sup>™</sup> Intelligent Headlamp System is exclusive and brand-spanking new. Plus, the suspension system is newly designed and engineered. In fact, just about the only thing that isn't new is its legendary Jeep brand heritage that has been built into the heart of Grand Cherokee from the very start.



## BEST-IN-CLASS

**Horsepower** 5.7L HEMI V8 engine @ 330 hp\*

**Torque** 5.7L HEMI V8 engine @ 375 lb-ft\*

**4x4 Traction Management\***

**Towing Capability** 7,200 lb<sup>†</sup>

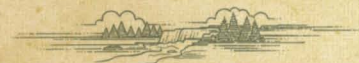
Class is based on Ward's 2004 Middle Sport/Utility vehicle segments and published industry information.

\* Available features.

† When properly equipped with Trailer Tow Group and 5.7L HEMI engine.

# ON-ROAD MASTER

Sized right for nimble handling, the 2005 Jeep Grand Cherokee sets a fresh standard for performance on the pavement. Countless improvements in Grand Cherokee's capability and comfort are forged together to make automotive history. Legendary Jeep brand off-road capability is now matched by a smooth and secure on-road ride.



### New! 5.7L HEMI<sup>®</sup> V8 Engine\*

With 330 horsepower and 375 lb-ft of torque, you control class-leading power for smooth cruising and fast acceleration. Exclusive Multi-Displacement System delivers improved fuel economy<sup>†</sup>

### New! Variable-ratio rack-and-pinion steering

Delivers quick response during tricky parking-lot maneuvers and precise steering when on the highway.

### New! Independent short-/long-arm front suspension

Smooths out your ride and makes pavement imperfections seem to gently disappear



\* Available features.

† When compared to 2004 V8 engine. 14 city/21 highway EPA estimated miles per gallon.



**Antilock Brake System (ABS):** Helps drivers manage steering control while braking on slippery surfaces. New developments in electronics provide faster response than in the past.

**4-Wheel Brake Traction Control (4BTC):** This new system instantly detects and manages wheel slippage by automatically braking a wheel that is slipping and then works with the four-wheel-drive system to send torque to the wheels with the most traction.

**Electronic Limited-Slip Differentials (ELSD):** Integrated with the Quadra-Drive II® four-wheel-drive system, ELSD in front and rear axles can rapidly transfer up to 100 percent of available torque to any wheel, along each axle.

**Electronic Stability Program (ESP):** Special sensors help determine if the vehicle is responding properly to driver steering inputs. When activated, the ESP system engages the specific brakes needed and reduces engine speed via the electronically controlled throttle (if equipped), helping to maintain vehicle control and directional stability when necessary.

**Multi-Displacement System (MDS):** This advanced technology automatically allows the HEMI® V8 to seamlessly transition to a four-cylinder mode of operation and back, providing up to 20 percent improvement in fuel economy without sacrificing on-demand power.

**Quadra-Trac I® 4WD\*:** Using a single-speed transfer case, this system provides convenient full-time four-wheel-drive capability. The transfer case features an open-center differential dividing engine torque nearly evenly between the front and rear axles. Includes the 4BTC system for added response and capability.

**Quadra-Trac II® 4WD:** This is an active full-time four-wheel-drive system with a center differential that features an electronically controlled clutch pack. Actively and quickly responds to wheel slippage with the ability to send up to 100 percent torque to front or rear axle. Includes 4BTC.

**Quadra-Drive II® 4WD:** The most advanced of all Grand Cherokee's four-wheel-drive systems. Includes an active full-time transfer case with an electronically controlled clutch pack and axles with ELSD for quick response. No other SUV offers this type of advanced control and capability.

\*Quadra-Trac I is not appropriate for conditions or situations where low range is required — such as severe off-road driving.

**FRIENDLY DEALERSHIPS** A knowledgeable staff that is professionally trained to guide you with expert advice.

**VISIT [jeep.com](http://jeep.com)** for all the latest information you will need to be properly equipped for an educated buying decision.

**CALL (800) 925-JEEP** Our seasoned Jeep brand customer service representatives are there with help — and all the answers.

**CHRYSLER FINANCIAL**, a member of the DaimlerChrysler Services Group, has flexible payment plans and financing products available for qualified buyers. For information on how Chrysler Financial can work for you, talk with your Jeep dealer or visit [chryslerfinancial.com](http://chryslerfinancial.com). **Chrysler Financial** Financing your drive.



**AUTHENTIC JEEP ACCESSORIES BY MOPAR** are manufactured to Original Equipment specifications, and are sold exclusively at Jeep dealerships.

**WARRANTY** Jeep vehicles are covered by a 3/36 Basic Limited Warranty and a 7/70 Powertrain Limited Warranty. Deductible applies to 7/70. The 7/70 is transferable to a second owner with fee. Ask your dealer for additional details and a copy of these limited warranties.



**JEEP EVERYDAY HEROES REWARD** gives sworn law enforcement officers, firefighters and EMTs a \$500 cash allowance toward the purchase of a new Jeep vehicle. See your Jeep dealer for eligibility requirements. Certain government agencies may prohibit personnel from receiving this cash allowance offer; confirm your employer's rules in advance.

**EVERY JEEP 4x4** equipped with a 4-LO transfer case proudly wears an authentic **Trail Rated®** badge — powerful proof of true off-road capabilities under the skin. Accept no substitutes.



**TREAD LIGHTLY!** As a founding member and official sponsor, we urge all Jeep owners to follow Tread Lightly! guidelines. Visit [treadlightly.org](http://treadlightly.org) or call (800) 966-9900 to learn more.

