

TOWN CAR

lincoln.com

Customer Assistance 800.521.4140

Roadside Assistance 800.241.3673



LINCOLN
REACH HIGHER

09LTCCAT ©2008 Lincoln Mercury, Ford Motor Company



2009

LINCOLN

HAVE YOU EXPERIENCED THE RIDE OF A LIFETIME?
FROM THE LAVISH COMFORT OF AMERICA'S MOST SPACIOUS
LUXURY SEDAN,[†] TIME HAS A WAY OF STANDING STILL.
FROM BUSTLING URBAN CENTER TO SOFTLY ROLLING
LANDSCAPE, THIS IS TRAVEL AS IT WAS MEANT TO BE.
AND STILL IS. IN THE ELEGANT 2009 LINCOLN TOWN CAR.



[†]Traditional Full-size Luxury Car class.



SUCCESS HAS A SHAPE. THE 2009 LINCOLN TOWN CAR. SCULPTED, CHROME WATERFALL GRILLE. CHROME¹- OR MACHINED-ALUMINUM WHEELS. ANCHORED BY THE RESOLUTE LINCOLN STAR. WITH TWO MODELS TO CHOOSE FROM, SIGNATURE LIMITED AND SIGNATURE L, TOWN CAR REMAINS AN AMERICAN ICON.

¹Available feature.



THE POWER OF PRESENCE. WHEREVER YOU TRAVEL,
AVAILABLE ALL-SEASON WHITE-SIDEWALL TIRES ADD TO
TOWN CAR'S DISTINGUISHED REAR-WHEEL-DRIVE PRESENCE.
ANOTHER DISTINCTIVE TRAIT. TOWN CAR HAS THE LARGEST
TRUNK IN ITS CLASS, WITH A GENEROUS CAPACITY OF 21.0 CU. FT.



V-8



THE POWER OF EIGHT. A supremely smooth 4.6L V-8 engine, with 239 hp and 287 lb.-ft. of torque, is at the heart of every 2009 Lincoln Town Car. With Flex Fuel capability, it even provides the power of choice at the pump: E85 or gasoline. Town Car can operate on E85 (85% ethanol/15% gasoline), gasoline, or any combination of the two. As you drive, an advanced Powertrain Control Module determines the ethanol/gas mixture and automatically adjusts for optimum performance. A 4-speed electronic automatic overdrive transmission delivers precise shifting, while a sophisticated electronic engine management system determines optimum shift points for maximum fuel economy.

AN UNRUFFLED TRAVELER. Town Car's legendary reputation as a velvety ride stems from the solid foundation of its full-length frame. Up front, hydroformed frame rails optimize the positioning of its independent-suspension components for enhanced handling and responsive steering. Monotube shock absorbers react quickly for precise control, while front and rear stabilizer bars help keep the vehicle level through the corners. And even at low speeds, Town Car lends a hand. While parallel parking, for instance, its power-assisted rack-and-pinion steering makes it easy to turn the wood and leather-trimmed steering wheel. At highway speeds, the steering system's limited assistance ensures even inputs.



DELIGHT YOUR FINGERTIPS. ENGAGE YOUR SOUL. CONVENIENTLY LOCATED BUTTONS ON THE LEATHER- AND WOOD-TRIMMED STEERING WHEEL LET YOU ADJUST YOUR AUDIO, CLIMATE AND CRUISE CONTROL SYSTEMS WITH EASE. WELCOME TO CRUISING AT ITS BEST. LINCOLN TOWN CAR.



SETS YOU, AND FIVE OF YOUR CLOSEST FRIENDS, COMPLETELY AT EASE. AMERICAN WALNUT BURL WOOD, SATIN-NICKEL ACCENTS AND PREMIUM LEATHER-TRIMMED SEATS CREATE A SOPHISTICATED ATMOSPHERE. BEST-IN-CLASS FRONT-ROW HEAD, SHOULDER AND HIP ROOM, AS WELL AS REAR-SEAT SHOULDER AND HIP ROOM, MAKE ITS BEST EVEN BETTER.



PERFECTLY PACKAGED TO ACHIEVE YOUR DESIRES. 8-WAY POWER, LEATHER-TRIMMED HEATED FRONT SEATS. HEATED REAR SEATS IN SIGNATURE L. POWER-ADJUSTABLE BRAKE AND ACCELERATOR PEDALS. EVEN A FULL-POWER TRUNK LID. IN LINCOLN TOWN CAR, YOU'RE FULLY POWERED TO SUCCEED.

YOUR PERSONAL SOUNDTRACK. Thanks to a convenient in-dash CD changer, the Lincoln Soundmark® Sound System holds up to six of your favorite CDs. So load them up and take a relaxing musical journey any time you'd like. Standard on every Town Car, this powerful system pushes 180 watts through nine speakers for a full-bodied audio adventure. Straightforward, easy-to-use controls make quick work of choosing a new track or calling up your favorite station.

YOUR COMFORT ZONE. The driver and front passenger enjoy special privileges when it comes to comfort in Town Car. In addition to standard heated front seats, the driver and front passenger both have the ability to dial in their own specific temperature settings on the Dual-zone Electronic Automatic Temperature Control. They are then free to sit back and relax as it's automatically maintained. Customized comfort. Lincoln luxury. Everywhere you go.



5 STARS IN ALL FIVE CATEGORIES, SEVEN YEARS IN A ROW. Lincoln Town Car is the first automobile ever to receive the government's highest 5-Star crash test rating¹ in all five categories – an achievement it has garnered for seven years in a row (2003–2009). In the event of certain frontal impacts, Town Car responds quickly by engaging the Personal Safety System[®] to control safety belt tension as well as the energy deployment level of the dual-stage front airbags. In certain side-impact collisions, Town Car's front-seat side airbags for the driver and right-front passenger, and the side-intrusion door beams located in all four doors, enhance occupant safety.

MANEUVERING MASTERY. Every Lincoln Town Car is equipped with 4-wheel disc brakes and an Anti-lock Brake System (ABS). During hard braking, ABS electronically "pumps" the brakes multiple times per second to provide greater steering control precisely when you need it most. All-Speed Traction Control improves traction on loose or slippery surfaces by using a combination of braking and engine control to reduce wheel spin and help you maintain your composure.

¹Star ratings are part of the U.S. Department of Transportation's Safercar.gov program (www.safercar.gov).

SIGNATURE LIMITED

ENGINE

4.6L SOHC 16-valve V-8 FFV engine
239 hp @ 4900 rpm/287 lb.-ft. of torque @ 4100 rpm
Fail-safe engine cooling system
Dual, stainless steel exhaust system
All-Speed Traction Control

DRIVETRAIN

4-speed electronic automatic overdrive transmission
Rear-wheel drive

WHEELS/TIRES

17" 10-spoke machined-aluminum wheels
P225/60R17 all-season black-sidewall tires

BRAKES

Power 4-wheel disc brakes
Anti-lock Brake System (ABS)

STEERING

Power-assisted rack-and-pinion steering

EXTERIOR

Color-keyed power, heated sideview mirrors with memory settings and auto-dimming driver side
Extended Rear Park Assist
Full-Power Trunk Lid with remote open/close and low liftover height
Intermittent, variable-speed windshield wipers
Lincoln waterfall grille with chrome surround
Rear-window defroster

INSTRUMENTATION/DRIVER CONTROLS

Accessory timed delays
Analog instrument cluster with secondary digital speedometer
Electronic digital compass in message center
Power windows with one-touch-up/-down driver-window feature
Power door locks with SmartLock
Power-adjustable pedals with memory settings
Automatic parking brake release
Universal Garage Door Opener

INTERIOR

American walnut burl wood trim
Auto-dimming rearview mirror
Dual-zone Electronic Automatic Temperature Control with secondary steering wheel-mounted controls
Embroidered front floor mats with Lincoln Star logo
Front-row center, bi-directional armrest with useable storage in lid; rear-seat center fold-down armrest with 2 cupholders
Front (2) and rear (2) cupholders
Illuminated visor vanity mirrors
Lockable, illuminated glove compartment
Rear-seat climate control vents
Remote fuel-filler door release on front door-trim panel
Remote trunk-lid release on front door-trim panel
Tilt, wood- and leather-trimmed steering wheel with secondary audio and climate controls and electronic cruise control

SEATING

Premium leather-trimmed 8-way power, heated front seats with 40/20/40 split and power lumbar; easy entry/exit power driver seat with memory settings
Front seatback and front door-trim map pockets

AUDIO SYSTEM

Soundmark® Sound System with AM/FM stereo and 6-disc in-dash CD changer

SAFETY/SECURITY

Personal Safety System® for driver and right-front passenger with dual-stage front airbags; safety belt pretensioners, safety belt energy-management retractors, safety belt usage sensors, driver-seat position sensor, crash severity sensor, restraint control module and Front-Passenger Sensing System
Front-seat side airbags¹ with head/chest protection for driver and right-front passenger
Autolamp automatic on/off headlamps with delay
Brake/shift interlock
Child-safety rear door locks
Cornering lamps
Lap and shoulder belts for front-outboard seating positions (height-adjustable) and all rear seating positions; lap belt for front-center position
Lower anchors and tether anchors for child-safety seats (LATCH) for rear seating positions
Perimeter alarm system
Remote keyless-entry system with illuminated entry, theater dimming and security approach lamps (when Autolamp system is engaged)
SecuriCode™ keyless-entry keypad
SecuriLock® passive anti-theft ignition system
Side-intrusion door beams
SmartLock anti-lockout system
Tire Pressure Monitoring System (excludes spare)

SIGNATURE L

In addition to equipment on Signature Limited:

6" extended wheelbase
Heavy-duty front stabilizer bar
REAR-SEAT AMENITIES PACKAGE with heated rear seats; illuminated cigar lighter on each rear door; one-piece floor mat with Lincoln Star logo; rear-seat 4-way head restraints; rear-seat center fold-down armrest with storage bin, tissue bin and 2 cupholders; rear-seat illuminated visor vanity mirrors; dual power points; secondary audio/climate controls; and secondary front-passenger seat forward-and-back control



FORD CREDIT Get the ride you want. Whether you plan to lease or finance, you'll find the choices that are right for you at Ford Credit. Ask your Lincoln Mercury Dealer for details or check us out at fordcredit.com.

FORD MOTOR COMPANY INSURANCE SERVICES Get Ford Motor Company quality in your auto insurance. Our program offers industry-leading benefits and competitive rates. Call 1.877.367.3847, or visit us at fordvip.com for a no-obligation quote. Insurance offered by American Road Services Company (in CA, American Road Insurance Agency), a licensed agency and subsidiary of Ford Motor Company.

FORD EXTENDED SERVICE PLAN For a purchase or lease, the Ford Extended Service Plan (ESP) gives you "Peace-of-Mind" protection designed to cover key vehicle components and protect you from the cost of unexpected repairs. Ask your dealer for an ESP, the only service contract backed exclusively by Ford and honored at all Ford Lincoln Mercury dealerships.

custom accessories Genuine Lincoln Accessories will be warranted for whichever provides you the greatest benefit: 12 months or 12,000 miles (whichever occurs first), or the remainder of your Bumper-to-Bumper 4-year/50,000-mile New Vehicle Limited Warranty. Contact your local Lincoln Mercury Dealer for details and a copy of the limited warranty. Lincoln Licensed Accessories (LLA) are warranted by the accessory manufacturer's warranty. Contact your Lincoln Mercury Dealer for details regarding the manufacturer's limited warranty and/or a copy of the LLA product limited warranty offered by the accessory manufacturer.

Complimentary maintenance makes driving your Lincoln even more of a pleasure. Simply bring it to an authorized Lincoln service center, and scheduled maintenance will be performed at no charge throughout your first year of ownership or 12,000 miles, whichever comes first. Additional peace of mind comes from a 4-year/50,000-mile bumper-to-bumper New Vehicle Limited Warranty that covers repair, replacement or adjustment of parts at no additional cost, as well as a 6-year/70,000-mile powertrain limited warranty which features no deductible and is fully transferable. And Roadside Assistance for 6 years or 70,000 miles provides the security of knowing that help may be only a phone call away should you run out of fuel, lock yourself out of the vehicle or need towing. Your Lincoln Mercury Dealer will provide complete details on all of these privileges.

Garmin is a registered trademark of Garmin Ltd.

Comparisons based on 2008 competitive models (Traditional Full-size Luxury Car class), publicly available information and Ford certification data at time of printing. Some features discussed may be optional. Vehicles shown may contain optional equipment. Features shown may be offered only in combination with other options or subject to additional ordering requirements or limitations. Dimensions shown may vary due to optional features and/or production variability. Following publication of the catalog, certain changes in standard equipment, options and the like, or product delays may have occurred which would not be included in these pages. Your Lincoln Mercury Dealer is the best source of up-to-date information. Lincoln Mercury reserves the right to change product specifications at any time without incurring obligations.

¹Always wear your safety belt and secure children in the rear seat.

TOWN CAR AVAILABLE EQUIPMENT

- High-Intensity Discharge (HID) headlamps
- Trunk organizer
- 17" 18-spoke chrome-aluminum wheels
- P225/60R17 all-season white-sidewall tires
- Daytime running lamps

TOWN CAR DIMENSIONS

Head room (front/rear) Signature Limited and Signature L	39.5"/37.4"
Shoulder room (front/rear) Signature Limited and Signature L	60.3"/59.9"
Hip room (front/rear) Signature Limited Signature L	57.0"/57.9" 57.0"/58.3"
Leg room (front/rear) Signature Limited Signature L	41.6"/39.6" 41.6"/45.4"
Height Signature Limited Signature L	59.0" 59.1"
Length Signature Limited Signature L	215.4" 221.4"
Width (excluding mirrors) Signature Limited and Signature L	78.5"
Width (including mirrors) Signature Limited and Signature L	85.7"
Width (mirrors folded) Signature Limited and Signature L	76.7"
Wheelbase Signature Limited Signature L	117.7" 123.7"
Track (front/rear) Signature Limited and Signature L	63.4"/65.9"
Passenger volume Signature Limited Signature L	108.7 cu. ft. 116.3 cu. ft.
Luggage capacity	21.0 cu. ft.
2009 EPA-estimated fuel economy	14 mpg city/21 hwy.

TOWN CAR AVAILABLE ACCESSORIES

- Garmin® nüvi® Portable Navigation System¹
- Remote start systems
- Vehicle security system
- All-weather floor mats
- Premium carpeted floor mats
- Interior cargo organizer
- Interior cargo net
- Side window deflectors
- Splash guards
- Wheel locks
- Ashcup/coin holder/Smoker's Pack

TOWN CAR WHEELS

- A 17" 10-spoke machined-aluminum
Standard on Signature Limited and Signature L
- B 17" 18-spoke chrome-aluminum
Available on Signature Limited and Signature L

¹Lincoln Licensed Accessories.



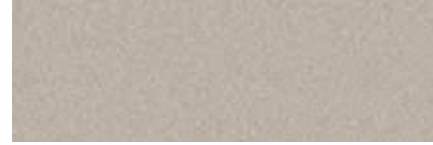
EXTERIOR



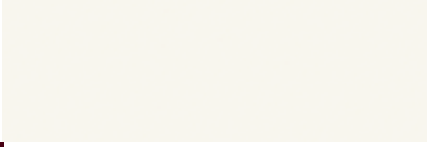
LIGHT ICE BLUE¹



DARK BLUE PEARL



LIGHT FRENCH SILK



VIBRANT WHITE¹



DARK CHERRY

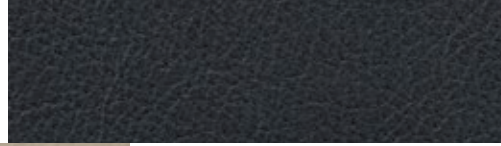


BLACK



SILVER BIRCH

INTERIOR



BLACK LEATHER

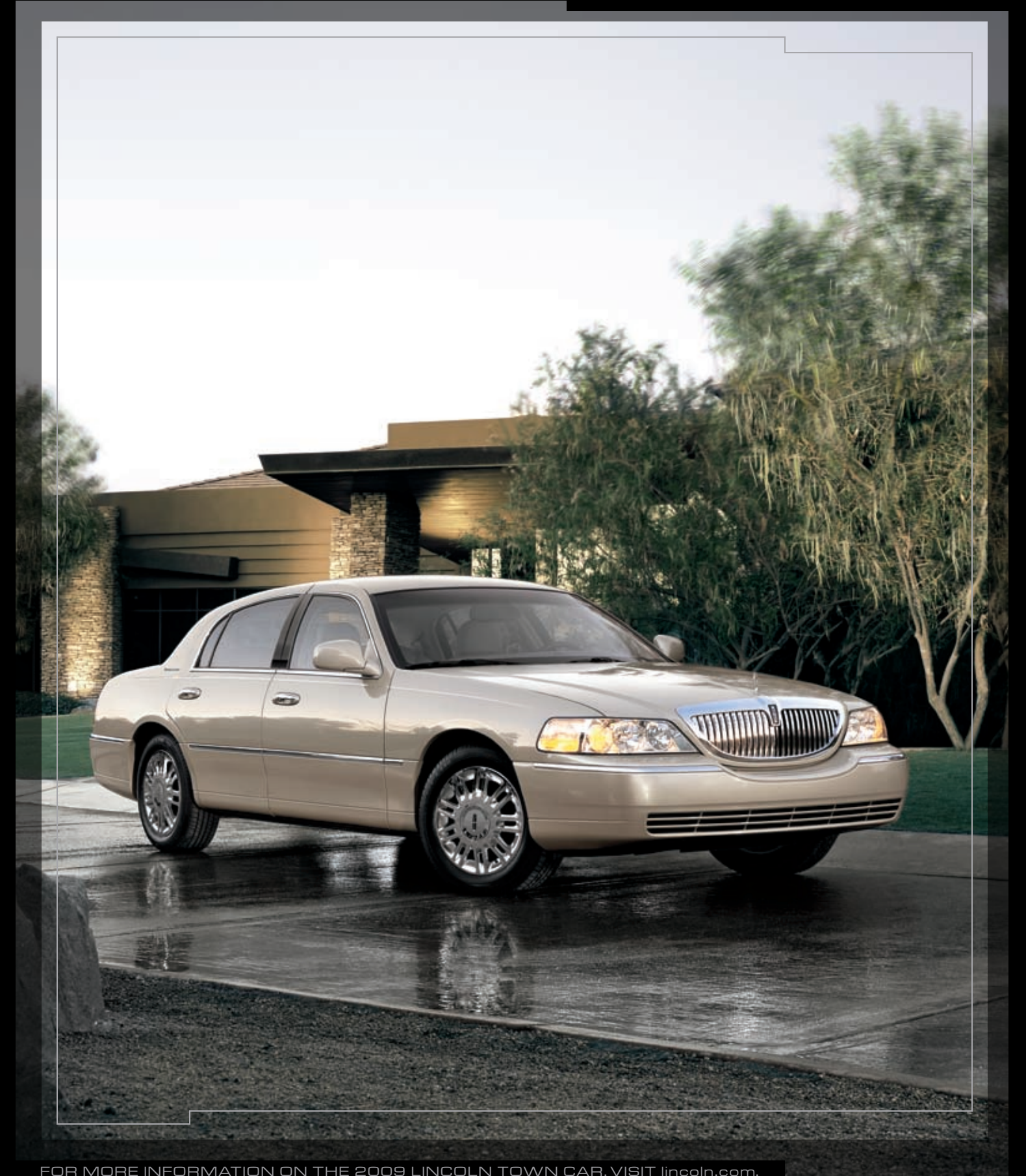


LIGHT CAMEL LEATHER



MEDIUM LIGHT STONE LEATHER

¹Not available on Signature L.
Lincoln uses clearcoat paint for beauty and protection.
All exterior paints are Metallic except for Vibrant White and Black. Colors are representative only.



FOR MORE INFORMATION ON THE 2009 LINCOLN TOWN CAR, VISIT lincoln.com.