



EVORA

"To add speed, add lightness"

*Colin Chapman*

Lotus founder and F1 pioneer



## 100% LOTUS

The Evora embodies 60 years of sports car heritage and innovative engineering expertise. The latest sports car to roll out of our Norfolk assembly plant, it follows such classics as the Espirit, Elise and Exige.

# WORTH WAITING FOR

A brand new Lotus doesn't come along very often, but when it does the industry stands up and takes notice. The Evora is the first all new Lotus for 14 years.





## HEAD TURNING CAPABILITIES

With only 400 produced in the first year of production, the Lotus Evora will be a rare sight on British roads.



# HOW A SPORTS CAR SHOULD LOOK

Low and purposeful, the Evora is the type of sports car you dreamt of when growing up. Its fluid lines, nipped-in waist and balanced proportions make it typically Lotus – timeless and truly beautiful.



# POWER AND CONTROL

With a 3.5-litre DOHC V6 engine at its heart and the benefit of Lotus' ride and handling expertise, the connection between driver and road will always be one of excitement and joy – just as it should be in a sports car.



# NOT YOUR ORDINARY SPORTS CAR

The bespoke interior of the Lotus Evora wraps around the driver, but the real surprise is behind you. As the only mid-engined 2+2 in production, there's seating in the back, offering practicality without compromising perfect road handling and balance.



# EVORA SPECIFICATIONS

## Engine and Performance

Mid-mounted, transverse  
3.5-litre DOHC V6 VVT-i  
280 ps @ 6,400 rpm  
350 Nm @ 4,700 rpm  
0-60 mph in 4.9 seconds  
Top speed is 162 mph (261km/h)

## Fuel and CO<sub>2</sub> emissions

205 g/km CO<sub>2</sub>  
Urban Cycle  
22.8 mpg (12.4l/100km)  
Extra Urban Cycle  
43.5 mpg (6.5 l/100km)  
Combined cycle  
32.5 mpg (8.7l/100km)

## Braking System

ABS  
Vented discs  
(350mm front, 332mm rear)  
AP Racing 4-piston calipers  
(front and rear)  
Switchable Lotus Traction Control (LTC)  
Hydraulic Brake Assist (HBA)  
Electronic Brake Distribution (EBD)

## Chassis

Modular lightweight bonded  
aluminium structure

## Gearbox

6-speed manual

## Steering

Hydraulically-assisted power steering

## Wheels/Tyres

18" front alloys (225/40 ZR18)  
19" rear alloys (255/35 ZR19)

## Suspension System

Forged aluminium wishbone suspension  
Bilstein high performance gas dampers  
Eibach coaxial coil springs

## Seating

2 variants available: 2 seater or 2+2  
Adjustable Recaro black  
leather sports seats (front)  
Black leather seats with ISOFIX  
(rear in 2+2 variant only)

## Kerb Weight

1382 kg (2+2 variant)

## Features

Flat-bottomed steering wheel  
Air conditioning

## In Car Entertainment

Alpine CD/MP3/WMA receiver

## Options

### Tech Upgrade Pack

High tech Alpine multi-media in car  
entertainment system with 7" WVGA  
touch screen, Bluetooth connectivity\*,  
satellite navigation, tyre pressure  
monitoring, cruise control and rear  
parking sensors

### Sport Upgrade Pack

Switchable sports mode with sharper throttle  
response, increased rpm limit and sports  
traction control setting, Sports diffuser,  
titanium sports exhaust tailpipe, cross drilled  
brake discs and engine oil cooler

### Premium Upgrade Pack

Accent lighting, armrest, upgraded interior  
trim, further extensive use of premium  
grade leathers in a choice of colours:  
Oyster, Chestnut, Paprika and Charcoal

### Further options

Electric power-fold door mirrors  
Bi-Xenon headlights  
Alpine Imprint dynamic  
EQ system  
Reversing camera  
Forged wheels  
Body colour door handles  
Sports ratio gear box



# EVORA SPECIFICATIONS

## Wheel options



Silver Y-Type 5-Spoke (Standard)  
Cast Alloy Wheels (18"/19")



Silver 10-Spoke  
Forged Wheels (18"/19")



Stealth Grey Y-Type 5-Spoke  
Cast Alloy Wheels (18"/19")



Gloss Anthracite 10-Spoke  
Forged Wheels (18"/19")

## Body colour options



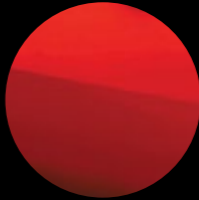
Solar Yellow



Chrome Orange



Burnt Orange



Ardent Red



Canyon Red



Aspen White



Ice White



Arctic Silver



Quartz Silver



Storm Titanium



Racing Green



Starlight Black



Phantom Black



Carbon Grey



Graphite Grey



Isotope Green



Aquamarine Blue



Liquid Blue



Laser Blue



Persian Blue

# EVORA SPECIFICATIONS

## Interior colour options



Paprika



Oyster



Chestnut



Charcoal

The information and images in this brochure are based on the current technical data when going to print. As part of a policy of continuous specification improvements, Lotus reserves the right to modify specifications, technical equipment, options and colours at anytime. For the latest details please consult your Lotus dealer or visit [www.grouplotus.com](http://www.grouplotus.com).

Throughout this publication, wherever a feature is described as an option it should be assumed that it will be at extra cost to the base vehicle unless specifically stated to the contrary. All model and colour combinations are subject to availability. Certain options or combinations of options may be unavailable in certain markets.

Performance results may vary depending upon the specification of the particular vehicle, environmental conditions, driving style and other factors. Published figures should be used for comparison purposes only and verification should not be attempted on public roads. Lotus recommends that all local speed and safety laws must be obeyed and safety belts worn at all times. Use of the vehicle on track or in a competitive manner is not endorsed by Lotus.

Participation in any type of timed competitive use will invalidate the manufacturer's warranty and the vehicle will require appropriate levels of expert vehicle preparation and servicing.

Distributors and dealers are not agents of Lotus and have absolutely no authority to bind Lotus by any express or implied undertaking or representation. All vehicles should be purchased through an authorised Lotus Evora dealership, please see the dealer locator on [www.grouplotus.com](http://www.grouplotus.com). Purchaser's statutory rights are not affected.

Note that current print and photographic techniques do not allow us to faithfully reproduce the full depth and tone of the colours in this brochure. This brochure is designed to provide general product information and is not a contractual document or offer of sale. For current information please contact your authorised UK Evora dealer.

The details in this brochure cannot be reproduced without the express authorisation of Lotus.

\*The Bluetooth word mark and logos are owned by Bluetooth SIG inc

© Group Lotus Cars Ltd 2009.

# UK EVORA AUTHORISED DEALERS

## **Bell & Colvill (Horsley) Ltd**

Epsom Road  
West Horsley  
Near Leatherhead  
Surrey  
KT24 6DG

01483 281 000  
enquiries@bellandcolvill.com

## **Castle Lotus**

Lower Street  
Stansted  
Essex  
CM24 8LP

01279 647 776  
info@castlelotus.com

## **Christopher Neil Ltd.**

Manchester Road  
Northwich  
Cheshire  
CW9 7NA

01606 414 81  
sales@christopherneil.co.uk

## **Dick Lovett Lotus**

Ashworth Road  
Bridgemead  
Swindon  
Wiltshire  
SN5 7XR

01793 615 111  
lotus@dicklovett.co.uk

## **Formula One**

Albert Street  
Newcastle Upon Tyne  
NE2 1YW

01912 610 383  
sales@f1carsales.com

## **Frosts (Cars) Ltd.**

270 Old Shoreham Road  
Hove  
East Sussex  
BN3 7EG

01273 272 727  
sales@frosts Lotus.co.uk

## **Grange Lotus**

Port Way  
Ashton on Ribble  
Preston  
Lancashire  
PR2 2YQ

01772 555 800  
sales@prestonmotorpark.com

## **Hadley Green**

202-204 High Street  
Barnet  
Hertfordshire  
EN5 5TA

020 8440 8252  
sales@hadleygreen.co.uk

## **JCT 600 Brooklands**

Ring Road  
Lower Wortley  
Leeds  
LS12 6AA

01133 890 700  
specialist.sales@jct600.co.uk

## **Lipscomb Lotus**

Performance House  
Forstal Road  
Aylesford  
Maidstone  
Kent  
ME20 7XA

08453 389 909  
evora@lipscomb.co.uk

## **Lotus Silverstone**

Units 41 - 42  
Silverstone Circuit  
Northamptonshire  
NN12 8TN

0844 3728 302  
info@lotussilverstone.co.uk

## **Murray Motor Company**

Bankhead Drive  
Sighthill  
Edinburgh  
EH11 4DJ

0131 200 8888  
murraymotorco@jmggroup.co.uk

## **Stratstone Cardiff**

Cambria House  
North Road  
Cardiff  
CF14 3BH

02920 695700  
cardiff Lotus@stratstone.com

## **Stratstone Leicester**

Ravensbridge Drive  
Leicester  
Leicestershire  
LE4 0BX

01162 539700  
info@leicester Lotus.co.uk

## **Stratton Motor Company Ltd.**

Ipswich Road  
Long Stratton  
Norfolk  
NR15 2XJ

01508 530 491  
lotussales@strattonmotorcompany.co.uk

## **Westover Sports Cars**

West Quay Road  
Poole  
Dorset  
BH15 1JF

01202 677 511  
evora@westovergroup.co.uk

## **Williams Automobiles Ltd.**

St Phillips Causeway  
Avon Meads  
Bristol  
BS4 3BD

01173 115 000  
lotus@williamsautomobiles.com



EVORA

[www.lotusevora.co.uk](http://www.lotusevora.co.uk)