

>> 2005

Mercedes-Benz

C-Class

Sport

> C 230 Kompressor Sport Sedan

C 320 Sport Sedan

C 55 AMG Sport Sedan

C 230 Kompressor Sport Coupe

C 320 Sport Coupe

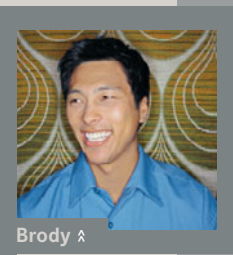
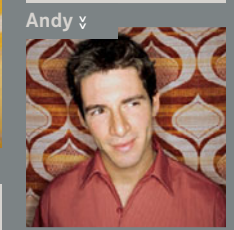
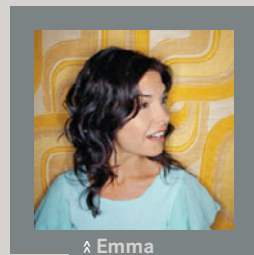


Mercedes-Benz

It's about fitting in while standing out

Getting the most out of life means making the most of every situation. You have to instantly adapt to your surroundings – to be able to transform from responsible, hard-working company player to hard-playing purveyor of good times and back. The multifaceted C-Class

Sport models can help you pull it off, with just the right balance of stunning looks, stimulating performance, cool features and remarkable value. They're cars specifically designed for any environment or state of mind you find yourself in – from Mulholland Drive to the drive-thru.



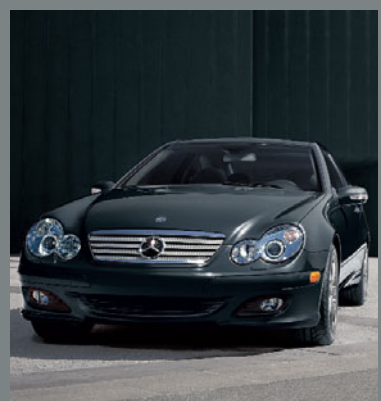
∨ C 320 Sport Sedan



C 55 AMG Sport Sedan ∨



C 230 Kompressor Sport Sedan ∨



∧ C 230 Kompressor Sport Coupe



∧ C 320 Sport Coupe

- > C-Class Sport models
- C 230 Kompressor Sport Sedan
- C 320 Sport Sedan
- C 230 Kompressor Sport Coupe
- C 320 Sport Coupe
- C 55 AMG Sport Sedan

- C-Class Luxury models
- C 240 Luxury Sedan
- C 240 Luxury Wagon
- C 320 Luxury Sedan

C-Class Sport specifications (1 of 2).

ENGINE	C230 KOMPRESSOR SPORT COUPE C230 KOMPRESSOR SPORT SEDAN	C320 SPORT COUPE C320 SPORT SEDAN	C55 AMG SPORT SEDAN ¹	
Engine type Construction	1,796-cc supercharged DOHC 16-valve inline-4 High-pressure die-cast alloy cylinder block. Alloy heads	3,199-cc SOHC 18-valve 90° V-6 High-pressure die-cast alloy cylinder block. Alloy heads	5,439-cc AMG-built SOHC 24-valve 90° V-8 High-pressure die-cast alloy cylinder block. Reinforced crankshaft and valvetrain. Alloy heads. Lightweight camshafts. Reinforced engine block, oil pan structure, pistons, connecting rods and crankshaft	
Net power Net torque Compression ratio	189 hp @ 5,800 rpm 192 lb-ft @ 3,500–4,000 rpm 8.7:1	215 hp @ 5,700 rpm 229 lb-ft @ 3,000–4,600 rpm 10.0:1	362 hp @ 5,750 rpm 376 lb-ft @ 4,000 rpm 11.0:1	
Induction	Variable intake-valve timing. Roots-type rotary-piston supercharger with air-to-air intercooler	Magnesium 2-stage resonance intake manifold increases intake runner length at lower rpm for improved response	Magnesium 2-stage resonance intake manifold increases intake runner length at lower rpm for improved response	
Fuel and ignition system	SIM 4 engine management Integrated sequential multipoint fuel injection and ignition includes individual cylinder control of fuel spray, spark timing and antiknock. Electronic throttle	ME 2.8 engine management Integrated sequential multipoint fuel injection and phased twin-spark ignition includes individual cylinder control of fuel spray, spark timing and phase, and antiknock. Electronic throttle. Two high-energy ignition coils and two spark plugs per cylinder, with 100,000-mile spark plug intervals	ME 2.8 engine management Integrated individual cylinder control of fuel spray, spark timing	
Fuel requirement	Premium unleaded gasoline, 91 pump octane.	Premium unleaded gasoline, 91 pump octane. With automatic transmission: Flexible Fuel Vehicles can operate on premium unleaded gasoline (91 pump octane), ethanol (E85), or a blend of E85 and premium gasoline.	Premium unleaded gasoline, 91 pump octane.	
Fuel tank capacity	16.4 gal/62.0 liters (with 2.1-gal/8.0-liter reserve)	16.4 gal/62.0 liters (with 2.1-gal/8.0-liter reserve)	16.4 gal/62.0 liters (with 2.1-gal/8.0-liter reserve)	
Exhaust system	Single sport-tuned with polished stainless-steel tip	Single sport-tuned with polished stainless-steel tip	Dual AMG-tuned low-backpressure with four polished stainless-steel tips	
DRIVETRAIN				
Manual transmission	Standard Fully synchronized 6-speed with direct-action short-throw shifter and clutch-starter interlock	Standard	Not available	
Automatic transmission Driver-adaptive control Touch Shift Shift into Optimum Gear Comfort mode Display	Optional 5-speed automatic Electronically controlled shifting. Driver-adaptive programming adjusts shift points to the driver's current driving style. Touch Shift allows driver to manually downshift and allow upshifts by nudging the shift lever left or right from the Drive position. Shift into Optimum Gear programming allows one-touch selection of the best gear for maximum acceleration or engine braking by holding the shift lever to the left of Drive for one second. Driver-selectable Comfort mode starts vehicle moving in 2nd gear or a second Reverse gear, and upshifts at lower rpm, to help improve control on slippery surfaces. Instrument-cluster readout of selected gear range and Standard/Comfort mode	Optional 5-speed automatic Instrument-cluster readout of selected gear range and Standard/Comfort mode	Standard AMG-enhanced 5-speed automatic Instrument-cluster readout of selected gear range and Standard/Comfort/Manual mode	
AMG transmission enhancements	Not available AMG SpeedShift™ programming provides up to 35% faster gear changes, automatically downshifts during braking, prevents unwanted upshifting while cornering, offers one-touch selection of the best gear for maximum acceleration (Shift into Optimum Gear), and features torque converter lockup in all forward gears Fingertip manual mode allows direct-access shifting through forward gears via buttons on back of upper steering-wheel spokes (left button downshifts, right button upshifts) or via Touch Shift feature of shift lever, and will automatically intervene only to select 1st gear when the vehicle stops. In Standard and Comfort modes, the steering-wheel buttons operate the Touch Shift feature	Not available	Standard	
Drive configuration	Rear-wheel drive	Rear-wheel drive	Rear-wheel drive	
Rear axle ratio	3.46:1	3.27:1	3.06:1	
TRACTION / STABILITY				
Electronic Stability Program (ESP)	ESP compares the driver's intended course, via steering and braking inputs, to the vehicle's response, via lateral acceleration, rotation (yaw) and individual wheel speeds. ESP then brakes individual front or rear wheels and/or reduces excess engine power as needed to help correct understeer (plowing) or oversteer (fishtailing). ESP also integrates all-speed traction control, which senses drive-wheel slip under acceleration and individually brakes the slipping wheel or wheels, and/or reduces excess engine power, until control is regained ²			
PERFORMANCE	SPORT COUPE	SPORT SEDAN	SPORT SEDAN	
Acceleration, 0–60 mph ³	Manual: 7.2 seconds Automatic: 7.5 seconds	7.6 seconds 7.8 seconds	Manual: 6.8 seconds Automatic: 6.9 seconds	Automatic: 4.9 seconds
Fuel economy, EPA estimate ⁴ highway estimate ⁵	Manual: 23/31 mpg Automatic: 23/32 mpg	23/32 mpg 24/32 mpg	Manual: 17/24 mpg Automatic: 19/24 mpg	Automatic: 16/22 mpg

1 Delayed availability. See your dealer.

2 No system, no matter how sophisticated, can repeal the laws of physics or overcome careless driving actions. Please always wear your seat belt.

3 Stated rates of acceleration are based upon manufacturer's track results and may vary depending upon

model, environmental and road surface conditions, driving style, elevation and vehicle load.

4 2005 EPA estimated fuel economy. Compare the estimated mpg to the estimated mpg of other vehicles. You may get different mileage depending on how fast you drive, weather conditions and trip length.

5 Your actual highway mileage will probably be less than the highway estimate.

C-Class Sport specifications (2 of 2).

	C230 KOMPRESSOR SPORT COUPE C320 SPORT COUPE	C230 KOMPRESSOR SPORT SEDAN C320 SPORT SEDAN	C55 AMG SPORT SEDAN ¹
SUSPENSION			
Front suspension	Independent 3-link with antidive geometry. Enlarged stabilizer bar		
Rear suspension	Independent 5-arm multilink with geometry for antisquat and alignment control. Enlarged stabilizer bar		
Springs and shock absorbers	Lowered ride height. Front coil springs over sport-tuned gas-pressurized shock absorbers. Separate rear coil springs and sport-tuned shock absorbers		AMG-tuned front coil springs over AMG gas-pressurized shock absorbers. Separate AMG-tuned rear coil springs and AMG gas-pressurized shock absorbers
STEERING			
Steering type	Rack-and-pinion with power assist and integrated hydraulic damper. 2.8 steering wheel turns lock-to-lock		
Turning circle	35.3 ft/10.76 m curb-to-curb	35.3 ft/10.76 m curb-to-curb	35.3 ft/10.76 m curb-to-curb
WHEELS / TIRES			
Wheels, aluminum-alloy	7-spoke design. 7.5Jx17 front – 8.5Jx17 rear	5-spoke design. 7.5Jx17 front – 8.5Jx17 rear	Polished AMG double-spoke design. ² 7.5Jx18 front – 8.5Jx18 rear
Tires, steel-belted radial	225/45 ZR17 front – 245/40 ZR17 rear, high performance ³	225/45 ZR17 front – 245/40 ZR17 rear, high performance ³	225/40 ZR18 front – 245/35 ZR18 rear, high performance ²
BRAKES			
Brake system	Dual-circuit power-assisted 4-wheel disc	Dual-circuit power-assisted 4-wheel disc	Dual-circuit power-assisted 4-wheel disc
Brake discs and calipers, front	11.8" internally ventilated discs with single-piston floating calipers	13.6" perforated and internally ventilated discs with dual-piston fixed calipers	13.6" perforated and internally ventilated discs with enlarged AMG composite 4-piston fixed calipers
Brake discs and calipers, rear	11.4" solid discs with single-piston floating calipers	11.4" solid discs with single-piston floating calipers	11.8" internally ventilated discs with dual-piston fixed calipers
Antilock Braking System (ABS)	ABS senses impending wheel lockup under heavy braking and pumps the front brakes individually or the rear brakes together (to help maintain stability) as needed up to 30 times per second, to prevent lockup and maintain steering ability		
Brake Assist	Brake Assist senses emergency braking via the speed at which the driver presses the brake pedal and immediately applies maximum available power boost, potentially reducing the overall stopping distance by eliminating the delay caused by a common human tendency not to brake hard enough, soon enough. Letting up on the brake pedal releases Brake Assist ⁴		
EXTERIOR DIMENSIONS			
Wheelbase	106.9 in/2,715 mm	106.9 in/2,715 mm	106.9 in/2,715 mm
Overall length	171.2 in/4,348 mm	178.4 in/4,531 mm	181.8 in/4,617 mm
Overall height	55.4 in/1,407 mm	55.6 in/1,412 mm	55.6 in/1,412 mm
Overall width	68.0 in/1,728 mm	68.0 in/1,728 mm	68.0 in/1,728 mm
Track, front	59.2 in/1,504 mm	59.3 in/1,506 mm	59.3 in/1,506 mm
Track, rear	58.1 in/1,476 mm	58.1 in/1,476 mm	58.0 in/1,473 mm
Coefficient of drag	0.29	0.27	0.27
Curb weight	C230 Kompressor: 3,250 lb/1,474 kg C320: 3,385 lb/1,535 kg	C230 Kompressor: 3,240 lb/1,470 kg C320: 3,430 lb/1,556 kg	3,540 lb/1,605 kg
INTERIOR DIMENSIONS⁵			
Headroom, front	38.5 in/979 mm	38.9 in/987 mm	38.9 in/987 mm
Legroom, front	42.0 in/1,067 mm	41.7 in/1,059 mm	41.7 in/1,059 mm
Hiproom, front	52.9 in/1,344 mm	51.9 in/1,318 mm	51.9 in/1,318 mm
Shoulder room, front	52.8 in/1,341 mm	53.1 in/1,350 mm	53.1 in/1,350 mm
Headroom, rear	36.3 in/922 mm	37.3 in/948 mm	37.3 in/948 mm
Legroom, rear	33.0 in/837 mm	33.0 in/838 mm	33.0 in/838 mm
Hiproom, rear	45.8 in/1,163 mm	54.5 in/1,384 mm	54.5 in/1,384 mm
Shoulder room, rear	51.7 in/1,312 mm	54.3 in/1,378 mm	54.3 in/1,378 mm
Cabin capacity	84.9 cu ft/2,488 liters	85.5 cu ft/2,506 liters	85.5 cu ft/2,506 liters
Trunk capacity	9.9 cu ft/280 liters (rear seats in use) 38.1 cu ft/1,080 liters (rear seats folded)	12.2 cu ft/345 liters	12.2 cu ft/345 liters

1 Delayed availability. See your dealer.

2 AMG 18" wheels and accompanying high-speed-rated tires provide substantially increased treadwear and reduced ride comfort compared to H-rated tires. Serious wheel and tire damage may occur if the vehicle is operated on rough or damaged road surfaces or upon encountering road debris or obstacles.

3 Z-rated tires are optimized for performance driving and may provide reduced ride comfort, increased tire noise, substantially increased treadwear and greater susceptibility to damage compared with H-rated tires.

4 Braking effectiveness also depends on proper brake system maintenance, and tire and road conditions.

5 Figures are with optional sunroof.

C 230 KOMPRESSOR SPORT COUPE
 C 320 SPORT COUPE
 C 230 KOMPRESSOR SPORT SEDAN
 C 320 SPORT SEDAN
 C 55 AMG SPORT SEDAN¹

EXTERIOR APPEARANCE

–	–	□ ²	□ ²	■	Power tilt/sliding tinted glass sunroof with one-touch open/close
–	–	■	■	■	AMG-design lower bodywork: front air dam with mesh air intakes, side skirts and rear apron (with CLK-inspired design on C 55 AMG)
■	■	–	–	–	7-spoke staggered-width 17" alloy wheels
–	–	■	■	–	5-spoke staggered-width 17" alloy wheels
–	–	–	–	■	AMG double-spoke staggered-width 18" alloy wheels ³
■	■	–	–	–	Perforated Silver grille with chrome trim and grille-mounted Star
–	–	■	■	–	Black grille with chrome ribs and chrome surround. Hood-mounted Star
–	–	–	–	■	Chrome slat-type grille. Hood-mounted Star
■	■	■	■	■	Color-keyed door handles
–	–	■	■	■	Chrome trim on bumpers, rub strips and side window sills
■	■	–	–	–	Neutral-tinted glass
–	–	■	■	■	Blue-tinted glass

EXTERIOR FEATURES

■	■	■	■	■	Dual power mirrors, linked to seat memory ⁴ and automatically heated
■	■	■	■	■	Parking-assist right-side mirror can tilt down upon shifting to Reverse ⁴
■	■	■	■	■	Electrically heated rear window with auto-shutoff based on time and outside temperature
■	■	■	■	■	Dual aero-blade windshield wipers. Heated windshield washer nozzles

EXTERIOR LIGHTING

■	■	■	■	■	Variable-focus halogen headlamps with projector low beams and clear high-impact polycarbonate lenses
■	■	■	■	■	Halogen front foglamps, in front apron. Single red rear foglamp, integrated in left taillamp cluster
■	■	■	■	■	Driver-selectable light-sensing headlamps can be set via the Auto position of the headlamp switch to automatically illuminate in darkness, and when entering dark tunnels or parking garages
■	■	■	■	■	Driver-programmable Daytime Running Lamps illuminate low-beam headlamps at reduced intensity (full intensity for optional Bi-Xenon lamps) in daylight, with auto-on override in darkness
■	■	■	■	■	Automatic lamp substitution uses a nearby lamp if a critical bulb fails
■	■	■	■	■	Touch Turn Signals flash three times with one touch of turn-signal lever, for lane-changing. Auxiliary LED turn signal indicators are integrated with side mirror housings

■ STANDARD
 □ OPTIONAL
 – NOT AVAILABLE

C 230 KOMPRESSOR SPORT COUPE
 C 320 SPORT COUPE
 C 230 KOMPRESSOR SPORT SEDAN
 C 320 SPORT SEDAN
 C 55 AMG SPORT SEDAN¹

LOCKING / SECURITY

■	■	■	■	■	SmartKey uses an electronic code to unlock the steering column and ignition. Removing SmartKey from ignition disables engine computer to help prevent unauthorized starting
■	■	■	■	■	SmartKey remote control integrates: <ul style="list-style-type: none"> - Door lock/unlock buttons (including liftgate on Sport Coupe). - Trunk opener (sedans). - Removable valet key. - Panic alarm. - Driver may selectively unlock only the driver's door and fuel filler, or both doors plus the trunk/liftgate and fuel filler
■	■	■	■	■	SmartKey remote locking uses redundant infrared and radio-frequency signals for improved range, and rolling-code signal for protection from transmitter cloning
■	■	■	■	■	SmartKey offers infrared-remote opening/closing of windows (plus optional sunroof, if equipped) from outside the car
■	■	■	■	■	Driver-programmable user-recognition feature links each SmartKey to driver's preferences (up to three individual users per car) for: <ul style="list-style-type: none"> - Driver's seat memory settings⁴ (all 3 presets, including steering column and outside mirror positions). - Various climate control settings. - Vehicle configuration settings from multifunction display, including language and lighting modes
■	■	■	■	■	Driver-programmable driveaway locking can automatically lock all the doors when the car reaches 9 mph
■	■	■	■	■	Night security illumination uses the car's exterior lights to help illuminate a path after parking. Driver-programmable intervals allow lights to stay on for 60, 45, 30 or 15 seconds, or not at all
■	■	■	■	■	Locator lighting uses the car's lights to help light a return path when the car is remote-unlocked in darkness. Unlocking car activates illuminated entry system
■	■	■	■	■	Automatic anti-theft alarm system with towaway protection and remote panic feature
■	■	■	■	■	Emergency trunk release, located inside cargo area and illuminated for 60 minutes after trunk lid is closed

¹ Delayed availability. See your dealer.

² Also available or only available as part of an Option Package. See Options listing at end of Equipment section.

³ AMG 18" wheels and accompanying high-speed-rated tires provide substantially increased treadwear and reduced ride comfort compared to H-rated tires. Serious wheel and tire damage may occur if the vehicle is operated on rough or damaged road surfaces or upon encountering road debris or obstacles.

⁴ Requires 10-way power driver's seat, optional on Sport Coupes and C 230 Kompressor Sport Sedan.

C 230 KOMPRESSOR SPORT COUPE
 C 320 SPORT COUPE
 C 230 KOMPRESSOR SPORT SEDAN
 C 320 SPORT SEDAN
 C 55 AMG SPORT SEDAN¹

INTERIOR FEATURES

■ ■ ■ ■ ■	Multifunction steering wheel provides convenient controls for basic functions of audio system and optional phone, plus operation of multifunction display (see Instrumentation, at right)
- - - - ■	Steering wheel-mounted manual gearshift controls
■ ■ - - -	Power front windows, both with one-touch express-up/down
- - ■ ■ ■	Power front and rear side windows, with one-touch express-up/down
■ ■ ■ - -	4-way (tilt/telescoping) manually adjustable steering column
□ ³ □ ³ □ ³ ■ ■	4-way power steering column, position linked to driver's seat memory
□ ³ □ ³ □ ³ ■ ■	Driver-programmable easy-exit feature can move driver's seat rearward and/or raise steering column when SmartKey is removed from ignition, and restore positions when key is reinserted
■ ■ ■ ■ ■	Electronic cruise control
□ ² □ ² □ ² □ ² ■ ■	Auto-dimming rearview mirror
■ ■ ■ ■ ■	Delayed-shutoff front courtesy lamps. Dual front reading lamps
- - ■ ■ ■	Entrance lamps in front doors. Rear-cabin courtesy lamp. Dual illuminated vanity mirrors
■ ■ ■ ■ ■	Height-adjustable front center armrest with dual enclosed storage compartments and 3-way lid (upper tray opens from left or right, lower compartment from front). Illuminated 2-tier glovebox
■ ■ ■ ■ ■	Retractable large-capacity dual front cupholder. Pockets in all doors. Parcel net in right front footwell
- - ■ ■ ■	Magazine pockets on both front seatbacks
- - ■ ■ ■	Folding rear center armrest with slide-out dual cupholder
■ ■ ■ ■ ■	Illuminated, carpeted cargo area
■ ■ - - -	Removable rigid cargo cover.

CLIMATE CONTROL

■ ■ ■ ■ ■	Dual-zone CFC-free automatic climate control with dual rotary temperature controls, automatic control of blower speed and airflow distribution (with manual override)
■ ■ ■ ■ ■	Dash-top diffuser vent
■ ■ ■ ■ ■	Rear-cabin air vents at rear of front console
■ ■ ■ ■ ■	Electrostatic dust and pollen filter
■ ■ ■ ■ ■	Tunnel mode offers one-touch closing of all windows, the sunroof or Panorama roof (if equipped) and cabin air intake by pressing and holding the air-recirculation button. Pressing button again restores previous window and sunroof positions

■ STANDARD
 □ OPTIONAL
 - NOT AVAILABLE

C 230 KOMPRESSOR SPORT COUPE
 C 320 SPORT COUPE
 C 230 KOMPRESSOR SPORT SEDAN
 C 320 SPORT SEDAN
 C 55 AMG SPORT SEDAN¹

SEATING

■ ■ - - -	10-way manually adjustable sport front seats
- - ■ - -	10-way adjustable sport front seats, with power adjustment for height and recline
□ ³ □ ³ □ ³ ■ ■	10-way power sport front seats, each with 3-position memory (linked to SmartKey user-recognition feature). Driver's adjustable lumbar support. Driver's seat memory includes steering column and outside mirror positions
□ □ □ □ ■	Heated front seats
■ ■ - - -	Rear-seat easy-entry system: When either front seatback is tipped forward, the entire seat moves up and forward for easier access to the rear cabin. Each seat returns to its previous position when its seatback is returned upright
■ ■ - - -	2-passenger rear seat
- - ■ ■ ■	3-passenger rear seat
■ ■ □ □ ■	60/40-split folding rear seatbacks and flip-forward seat cushions

UPHOLSTERY / TRIM

■ ■ - - -	Black M-B Tex upholstery
- - ■ - -	M-B Tex upholstery with leather front seating inserts
- - - - ■	AMG-design Nappa leather upholstery with Alcantara shoulder inserts
■ ■ ■ ■ ■	Black leather-trimmed 3-spoke sport steering wheel with raised thumbgrips and Silver buttons
■ ■ - - -	Silver sport shift knob
- - ■ - -	Black leather-trimmed and Silver sport shift knob
- - - - ■	AMG-design color-keyed Nappa leather-trimmed sport shift knob
■ ■ ■ ■ ■	Rubber-studded aluminum pedals, including parking brake
■ ■ - - -	Charcoal linear-pattern aluminum trim on dash and console, with polished chrome highlights
- - ■ ■ ■	Silver linear-pattern aluminum trim on doors, dash and console, with polished chrome highlights
■ ■ ■ ■ ■	Velour floor carpeting and floor mats (AMG floor mats on C 55 AMG)

¹ Delayed availability. See your dealer.

² Also available or only available as part of an Option Package. See Options listing at end of Equipment section.

³ Option includes 10-way power driver's seat, memory system and power steering column.

C 230 KOMPRESSOR SPORT COUPE
 C 320 SPORT COUPE
 C 230 KOMPRESSOR SPORT SEDAN
 C 320 SPORT SEDAN
 C 55 AMG SPORT SEDAN¹

AUDIO SYSTEMS

■	■	■	■	■	AM/FM stereo/weatherband radio with in-dash single-CD player
■	■	■	■	■	In-dash audio system operating panel integrates controls and displays for the radio, CD player, optional glovebox-mounted 6-disc CD changer and optional portable digital telephone
■	■	■	-	-	6-speaker audio system, with automatic speed-sensitive volume adjustment
□ ²	□ ²	■	■	■	harman/kardon® LOGIC7® digital surround sound system: - 12 speakers, including dual surround speakers and a subwoofer. - 7.1-channel amplifier. - Multichannel digital surround-sound technology developed for the professional recording industry, to provide a natural and realistic sound stage. - Digital Dynamic Volume Control, to help preserve the sound balance under all driving conditions
■	■	■	■	■	Fiber-optic network offers precise, high-speed communication among components. Factory preparation for optional CD changer and cellular phone, and SIRIUS Satellite Radio ³ prewiring, using fiber-optic network

INSTRUMENTATION

■	■	■	■	-	Electronic analog speedometer, tachometer and gauges for fuel and coolant temperature, with hooded chrome rings, black faces, white markings and white nighttime backlighting
-	-	-	-	■	AMG-design instrumentation: electronic analog 200-mph speedometer; ⁴ tachometer and gauges for fuel and coolant temperature, with chrome rings, silver-accented black faces, white markings and white nighttime backlighting
■	■	■	■	■	Digital display for clock and Touch Shift gear/mode selection (and manual mode gear selection on C55 AMG)
■	■	■	■	■	Multifunction display in instrument cluster can be scrolled via steering-wheel controls to operate and display various menus and vehicle features: - Odometer, resettable trip meter and outside temperature indicator. - Digital speedometer, Maintenance System (see below), and engine oil-level check. - Radio station, CD player, CD changer (optional). - Navigation system route guidance (optional). - Vehicle reminder and malfunction messages. - Driver-programmable settings for instrument cluster, clock, lighting, vehicle and convenience features. - Trip computer (elapsed time, fuel consumption, distance to empty). - Mobile phone book (optional)
■	■	■	■	■	Mercedes-Benz Maintenance System displays distance remaining to next basic maintenance service, indicates type of service due, and provides automatic reminder feature when service interval draws near
■	■	■	■	■	Audible reminders to fasten seat belts, release parking brake, switch off headlights, close sunroof and remove key from ignition

■ STANDARD
 □ OPTIONAL
 - NOT AVAILABLE

C 230 KOMPRESSOR SPORT COUPE
 C 320 SPORT COUPE
 C 230 KOMPRESSOR SPORT SEDAN
 C 320 SPORT SEDAN
 C 55 AMG SPORT SEDAN¹

RESTRAINT SYSTEMS

■	■	■	■	■	Integrated Restraint System ⁵ : - Driver and front passenger are each provided with an adaptive dual-stage front air bag, side-impact air bag, and 3-point seat belt with Emergency Tensioning Device (ETD) and belt force limiter. - Outboard rear passengers are each provided with a side-impact air bag and 3-point seat belt with ETD and belt force limiter. - Center rear passenger (sedans) is provided with a 3-point seat belt
■	■	■	■	■	Head Protection Curtains: - In a side impact exceeding a preset threshold, a multi-chamber air bag deploys along the front and rear side windows on the affected side of the car
■	■	■	■	■	Adaptive dual-stage front air bags are deployed in response to frontal impact severity exceeding the system's deployment threshold ⁵
-	-	■ ⁶	■ ⁶	■	BabySmart™ system automatically deactivates the front passenger's front air bag when an accessory BabySmart-compatible child seat is properly installed ⁵
■	■	■ ⁶	■ ⁶	-	Occupant Classification System (OCS) automatically turns the front passenger's front air bag on or off based on the weight category determined by weight sensor readings from the front passenger seat ⁵
■	■	■	■	■	ETDs are deployed in a front or rear impact exceeding a preset threshold of severity, or certain rollovers. A front ETD will not deploy if seat belt is unfastened
■	■	■	■	■	Universal LATCH system (Lower Anchors and Tethers for Children) at outboard rear seating positions. Selectable passenger seat-belt retractors help secure child seats ⁵
■	■	-	-	-	Pivoting front shoulder-belt handover arm positions belt for easier access when door is closed, and helps keep belt out of the way when door is opened for easier rear-seat access
■	■	■	■	■	Height-adjustable front shoulder belts
■	■	■	■	■	3-point front seat belts are attached to seat frames at both lower points
■	■	■	■	■	Automatically height-adjusting outboard rear shoulder belts
■	■	■	■	■	4-way adjustable front head restraints. On models equipped with 10-way power front seats, the front head restraints also power-adjust for height, manually adjust fore-aft, and automatically height-adjust as seat is moved fore-aft
■	■	-	-	-	Two individually retractable rear head restraints
-	-	■	■	■	Three individually retractable rear head restraints. All three rear head restraints can be remotely retracted by the driver to help improve rearward vision when the rear seats are unoccupied

1 Delayed availability. See your dealer.
 2 Also available or only available as part of an Option Package. See Options listing at end of Equipment section.
 3 See dealer for availability details. While the SIRIUS network of satellite and terrestrial antennas provides nearly seamless service throughout the contiguous U.S., SIRIUS service may be unavailable or interrupted for a variety of reasons, including environmental or topographic conditions; in certain locations such as tunnels, parking garages, or within or next to large buildings; or near other technologies that can interfere with the SIRIUS signal. Programming subject to change. Not available in Alaska, Hawaii or Puerto Rico.
 4 Obey all speed limits. Top speed electronically limited to 155 mph.
 5 **WARNING: THE FORCES OF A DEPLOYING AIR BAG CAN CAUSE SERIOUS OR FATAL INJURY TO A CHILD UNDER AGE 13. THE SAFEST SEATING POSITION FOR YOUR CHILD IS IN THE REAR SEAT, BELTED INTO AN APPROPRIATE, PROPERLY INSTALLED CHILD SEAT, OR CORRECTLY WEARING A SEAT BELT IF TOO LARGE FOR A CHILD SEAT. WITH BABYSMART SYSTEM, A CHILD UNDER 13 MUST NOT USE THE FRONT SEAT UNLESS THE CHILD IS BELTED INTO AN APPROPRIATE, PROPERLY INSTALLED BABYSMART-COMPATIBLE CHILD SEAT AND THE "PASSENGER AIR BAG OFF" INDICATOR REMAINS ILLUMINATED. OCCUPANT CLASSIFICATION SYSTEM (OCS) IS DESIGNED TO TURN THE FRONT PASSENGER'S FRONT AIR BAG OFF WHEN THE SYSTEM SENSES THE WEIGHT OF A TYPICAL CHILD 12 MONTHS OLD OR LESS, PLUS THE WEIGHT OF A STANDARD APPROPRIATE CHILD RESTRAINT. SEE OPERATOR'S MANUAL TO DETERMINE WHICH SYSTEM YOUR VEHICLE HAS, FOR IMPORTANT ADDITIONAL INFORMATION ON THESE SYSTEMS, AND FOR FURTHER INFORMATION REGARDING THE TRANSPORTATION OF CHILDREN HEAVIER THAN A TYPICAL 12-MONTH-OLD.**
 6 Occupant Classification System is scheduled to replace BabySmart system approximately in late summer 2004 production on models noted.

C 230 KOMPRESSOR SPORT COUPE
 C 320 SPORT COUPE
 C 230 KOMPRESSOR SPORT SEDAN
 C 320 SPORT SEDAN
 C 55 AMG SPORT SEDAN¹

INDIVIDUAL OPTIONS

<input type="checkbox"/>	<input type="checkbox"/>	<input type="checkbox"/>	<input type="checkbox"/>	<input checked="" type="checkbox"/>	Driver-adaptive 5-speed electronic automatic transmission with Touch Shift control
<input type="checkbox"/>	<input checked="" type="checkbox"/>	<input checked="" type="checkbox"/>	<input checked="" type="checkbox"/>	<input checked="" type="checkbox"/>	Digital dual-zone CFC-free automatic climate control, with: <ul style="list-style-type: none"> - Individual left and right digital temperature controls, and automatic control of blower speed and airflow distribution (with manual override). - Sun sensor. - Humidity/dewpoint sensor helps reduce window fogging during humid weather, and helps prevent overdrying of cooled air. - REST mode can ventilate cabin or help keep cabin warmer using residual heat for up to 30 minutes after car is turned off
<input type="checkbox"/>	<input type="checkbox"/>	<input type="checkbox"/>	<input checked="" type="checkbox"/>	<input checked="" type="checkbox"/>	10-way power driver's seat and steering column, with: <ul style="list-style-type: none"> - 3-position memory system for seat, steering column and side mirrors. - Driver-programmable easy-exit feature. - Parking-assist right-side mirror
<input type="checkbox"/>	<input type="checkbox"/>	<input type="checkbox"/>	<input type="checkbox"/>	<input checked="" type="checkbox"/>	Heated front seats
<input checked="" type="checkbox"/>	<input checked="" type="checkbox"/>	<input type="checkbox"/>	<input type="checkbox"/>	<input checked="" type="checkbox"/>	60/40-split folding rear seatbacks and flip-forward seat cushions
<input type="checkbox"/>	<input type="checkbox"/>	<input type="checkbox"/>	<input type="checkbox"/>	<input type="checkbox"/>	COMAND Cockpit Management and Data system integrates: <ul style="list-style-type: none"> - DVD-based GPS navigation system, with map database for the contiguous U.S., Hawaii and Canada on a single DVD.³ Dedicated DVD drive concealed in-dash behind screen. - AM/FM stereo/weatherband radio. - In-dash single-CD player. - Controls for optional glovebox-mounted 6-disc CD changer and phone. - A 6.5" color-LCD in-dash screen, with motorized opening/closing to load CD player and DVD drive. - Ten mode-dependent soft keys alongside screen for easy access to commands and on-screen menus
<input type="checkbox"/>	<input checked="" type="checkbox"/>	<input checked="" type="checkbox"/>	<input type="checkbox"/>	<input checked="" type="checkbox"/>	Integrated 6-disc CD changer, mounted in glovebox
<input type="checkbox"/>	<input type="checkbox"/>	<input type="checkbox"/>	<input type="checkbox"/>	<input type="checkbox"/>	SIRIUS Satellite Radio equipment ⁴
<input type="checkbox"/>	<input type="checkbox"/>	<input type="checkbox"/>	<input type="checkbox"/>	<input type="checkbox"/>	Hands-Free Communication System. (Requires accessory telephone handset and cradle, sold separately. See your dealer for selection)
<input type="checkbox"/>	<input type="checkbox"/>	<input type="checkbox"/>	<input type="checkbox"/>	<input checked="" type="checkbox"/>	Tele Aid in-car assistance system equipment. ⁵ <ul style="list-style-type: none"> - Tele Aid system uses GPS satellites plus a cellular link to provide 24-hour live assistance for emergency aid (SOS button), information (i-button) or Roadside Assistance (wrench button). Tele Aid basic services include: <ul style="list-style-type: none"> - Automatic Collision Notification (engages SOS function if an air bag or ETD deploys). - GPS-based Stolen Vehicle Recovery (allows law enforcement agencies to track and recover stolen vehicle). - Remote Door Unlock (allows owner to have doors automatically unlocked in the event the SmartKey becomes locked inside vehicle). - Automatic Alarm Notification (alerts Mercedes-Benz to contact vehicle owner if antitheft alarm sounds). - Dealer Connect service
<input type="checkbox"/>	<input type="checkbox"/>	<input type="checkbox"/>	<input type="checkbox"/>	<input checked="" type="checkbox"/>	Premium leather upholstery on all seat surfaces plus door trim inserts
<input type="checkbox"/>	<input type="checkbox"/>	<input type="checkbox"/>	<input type="checkbox"/>	<input type="checkbox"/>	Hand-polished Charcoal Cinnamora or Brown Poplar wood trim
<input type="checkbox"/>	<input type="checkbox"/>	<input type="checkbox"/>	<input type="checkbox"/>	<input type="checkbox"/>	Hand-polished Black Birdseye Maple or Brown Poplar wood trim
<input type="checkbox"/>	<input type="checkbox"/>	<input type="checkbox"/>	<input type="checkbox"/>	<input type="checkbox"/>	Metallic paint

■ STANDARD
 □ OPTIONAL
 - NOT AVAILABLE

C 230 KOMPRESSOR SPORT COUPE
 C 320 SPORT COUPE
 C 230 KOMPRESSOR SPORT SEDAN
 C 320 SPORT SEDAN
 C 55 AMG SPORT SEDAN¹

OPTION PACKAGES

<input type="checkbox"/>	<input type="checkbox"/>	<input type="checkbox"/>	<input type="checkbox"/>	<input type="checkbox"/>	Lighting Package: <ul style="list-style-type: none"> - Bi-Xenon High Intensity Discharge projector low- and high-beam headlamps. - Heated headlamp washers. - Corner-illuminating front foglamps (Sport Coupes only), activated via turn signal or steering at speeds under 25 mph
<input type="checkbox"/>	<input type="checkbox"/>	<input type="checkbox"/>	<input type="checkbox"/>	<input type="checkbox"/>	Entertainment Package: <ul style="list-style-type: none"> - 320-watt 12-speaker harman/kardon[®] LOGIC7[®] digital surround sound system (standard on C 320 and C 55 AMG Sport Sedans). - Glovebox-mounted 6-disc CD changer
<input type="checkbox"/>	<input type="checkbox"/>	<input type="checkbox"/>	<input type="checkbox"/>	<input type="checkbox"/>	Sunroof Package: <ul style="list-style-type: none"> - Infrared rain sensor automatically adjusts wiper speed and intermittent wiper frequency from infinite delay to fast wiping speed based on amount of rainfall measured on windshield. - Integrated 3-button garage door control, compatible with HomeLink[®] components and some other systems. - Auto-dimming left-side and inside rearview mirrors. - Power tilt/sliding glass sunroof (Sport Sedans) with one-touch express-open/close and manual retractable sunshade. - Panorama tinted glass roof (Sport Coupes) with power tilt/sliding panel with express-open and dual power sunshades. - Power rear-window sunshade (Sport Sedans), with one-touch express-up/down
<input type="checkbox"/>	<input type="checkbox"/>	<input type="checkbox"/>	<input type="checkbox"/>	<input type="checkbox"/>	Premium Package: <ul style="list-style-type: none"> - Infrared rain sensor automatically adjusts wiper speed and intermittent wiper frequency from infinite delay to fast wiping speed based on amount of rainfall measured on windshield. - Power rear-window sunshade, with one-touch express-up/down. - Glovebox-mounted 6-disc CD changer

1 Delayed availability. See your dealer.
 2 Also available or only available as part of an Option Package. See Option Package listing above.
 3 DVD-ROM maps do not cover all areas nor all routes within an area. One U.S./Canada DVD-ROM is included with vehicle.
 4 See dealer for availability details. While the SIRIUS network of satellite and terrestrial antennas provides nearly seamless service throughout the contiguous U.S., SIRIUS service may be unavailable or interrupted for a variety of reasons, including environmental or topographic conditions; in certain locations such as tunnels, parking garages, or within or next to large buildings; or near other technologies that can interfere with the SIRIUS signal. Programming subject to change. Not available in Alaska, Hawaii or Puerto Rico.
 5 Tele Aid equipment includes first year's basic Tele Aid service provided at no additional cost with subscription. Subscription and acquaintance call required for service to be active. System operates only where cellular and GPS coverage are available. Owner must authorize stolen vehicle tracking by providing a personal PIN code and file a police report. See dealer for details of telematics services.

Sport Sedan EXTERIOR

C 230 Kompressor Sport Sedan / C 320 Sport Sedan

17" 5-spoke aluminum-alloy wheels

Lowered, sport-tuned suspension

Perforated front brake discs with dual-piston calipers

New AMG-design lower bodywork

Polished stainless-steel exhaust finisher

Optional Bi-Xenon projector headlamps



International jetsetter Andy

C 230 Kompressor Sport Sedan shown with optional Pewter metallic paint, and Sunroof and Lighting Packages.

Andy knows how to say "Haven't we met somewhere before?" in seven languages.

All work and no play can make anyone dull. Fortunately for Andy, he's got the C-Class Sport Sedan to help him stay sharp. The newly redesigned 2005 C-Class Sport Sedans feature new AMG-design lower body styling – including a muscular front apron with mesh inserts and aggressively contoured side sills – and staggered-width 17" 5-spoke aluminum-alloy wheels rolling on a lowered sport suspension with a wider wheel stance. If you're going to live life in the fast lane you've got to look the part. We've also given the Sport Sedan extra touches such as new clear-lens headlamps, cool blue-tinted glass and a stainless-steel exhaust finisher. Even if you aren't quite a jetsetter on the international level, at least you can be one on the interstate.



Treasure hunter Andy ▾

Sport Sedan INTERIOR

C230 Kompressor Sport Sedan

10-way sport front seats with power height and recline
Leather front seating inserts
6-speaker audio with in-dash CD
Dual-zone climate control
Silver linear-pattern aluminum trim

4-way adjustable steering column
3-spoke multifunction sport steering wheel
Optional 320-watt 12-speaker harman/kardon®
LOGIC7® surround sound with 6-CD changer
Optional 60/40-split folding rear seats



C230 Kompressor Sport Sedan shown in Black with optional automatic transmission, heated front seats, and Sunroof and Entertainment Packages.



Andy knows a good deal when he sees one. And, as you can see, he has impeccable taste. So it's no surprise that he would choose to drive the C230 Kompressor Sport Sedan. The redesigned interior is loaded with standard features like a new multifunction sport steering wheel and dual-zone climate control featuring an electrostatic dust filter to help keep the air inside clean. The look is fresh as well, with new silver linear-pattern aluminum trim on the console and doors, hooded chrome-ringed gauges, and rubber-studded aluminum pedals. And, like every C-Class, the C230 Kompressor Sport Sedan offers the 10-way protection of eight standard air bags. Unfortunately for Andy, they won't do him much good when his girlfriend finds out what he got her for her birthday.

Sport Sedan INTERIOR

∨ Carpool all-star Andy

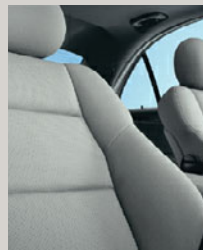
C 320 Sport Sedan

10-way power sport front seats with 3-position memory
Leather front seating inserts
3-spoke multifunction sport steering wheel
4-way power steering column with easy-exit feature

Dual-zone climate control
320-watt 12-speaker harman/kardon® LOGIC7®
digital surround sound system
Optional glovebox-mounted 6-CD changer



C320 Sport Sedan shown in Ash with optional COMAND system, heated front seats, and Sunroof and Lighting Packages.



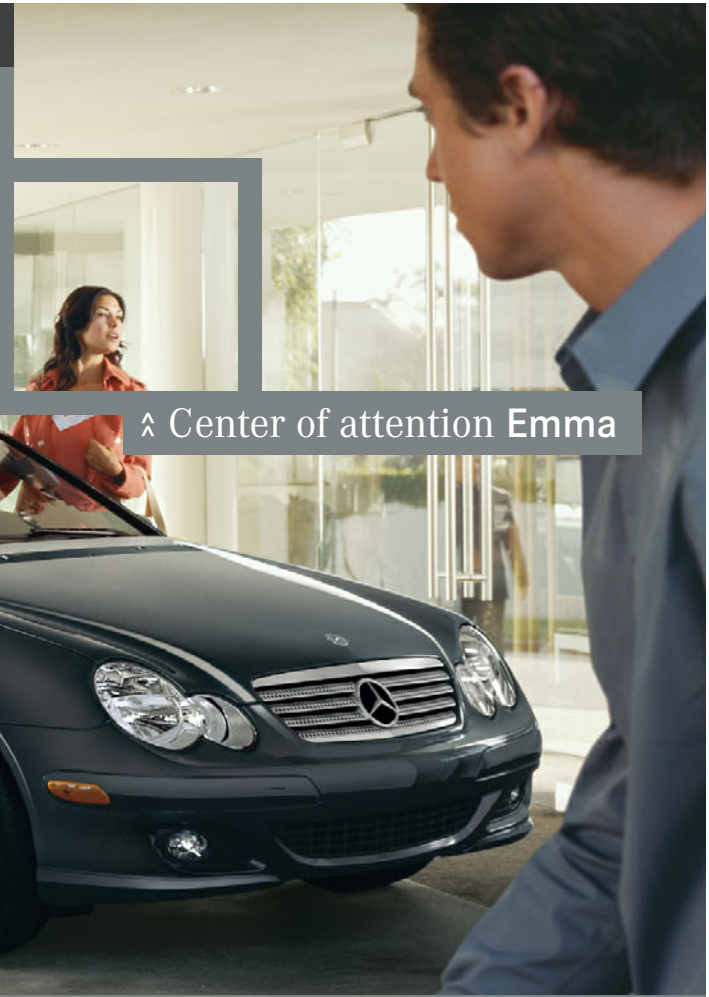
Some people just have an innate ability to make those around them feel energized. In Andy's case, it has less to do with ability and much more to do with his C320 Sport Sedan. Inside, there's plenty of room for everyone to kick back. Up front, deeply bolstered sport front seats featuring leather seating inserts help hold front passengers in place while Andy is zipping through one of his patented shortcuts. Throughout the interior, there's the soothing effect of dual-zone climate control. But if one of the carpoolers should get a bit too relaxed, Andy gives them a jolt with some '80s flashback action from his 320-watt 12-speaker harman/kardon LOGIC7 7.1-channel digital surround sound system. After all, as the driver, it's his duty to get everyone in his carpool to work, alert and on time. All-star, indeed.

Sport Coupe EXTERIOR

C230 Kompressor Sport Coupe / C320 Sport Coupe

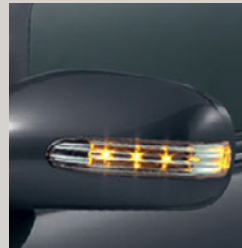
17" 7-spoke aluminum-alloy wheels
Polished stainless-steel exhaust finisher
Aggressive body styling
Perforated silver grille

Dual heated power mirrors
Optional Panorama glass roof
Optional Bi-Xenon headlamps with
corner-illuminating foglamps



^ Center of attention Emma

C230 Kompressor Sport Coupe shown with optional Steel Grey metallic paint and Sunroof Package.



What you wear on the outside is an expression of how you feel inside. The 2005 C-Class Sport Coupes' aggressive attitude is reflected by 360 degrees of new, more intense exterior style, from brilliant clear-lens headlamps flanking a silver perforated grille, to restyled taillamps and a polished stainless-steel exhaust finisher. It's an assertive look that demands attention with artistically contoured lower bodywork—including a powerfully sculpted front apron with larger air intakes—and staggered-width 17" 7-spoke aluminum-alloy wheels. LED turn signals in the side mirror housings even bring attention to the driver's intentions. Only one question: Are they checking out Emma or her Sport Coupe?

Sport Coupe INTERIOR

C 230 Kompressor Sport Coupe / C 320 Sport Coupe

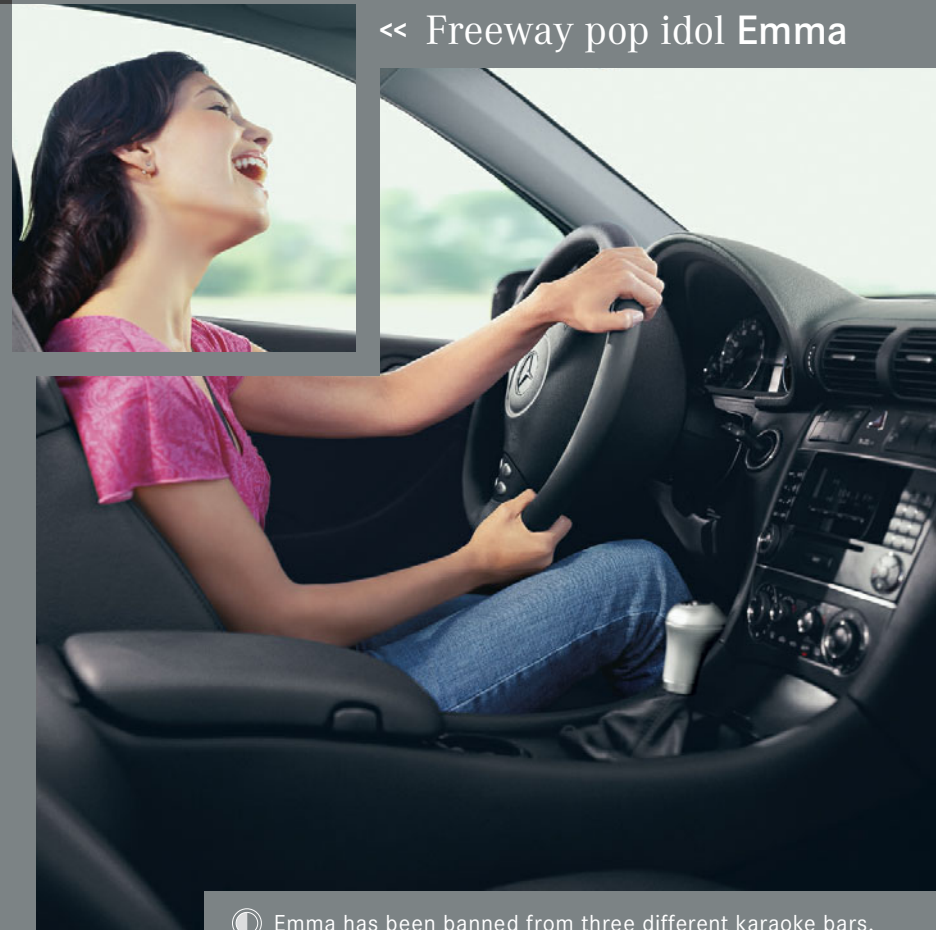
10-way adjustable sport front seats
3-spoke multifunction sport steering wheel
4-way adjustable steering column
Dual-zone climate control

Rubber-studded aluminum pedals
Light-sensing auto-on headlamps
6-speaker audio with in-dash CD
Optional Panorama glass roof



C 320 Sport Coupe shown in Black with optional heated front seats and COMAND system.

<< Freeway pop idol Emma



Emma has been banned from three different karaoke bars.

The power windows are up. The Sport Coupe's powerful sound system – featuring six speakers and a standard CD player – is turned way up. And Emma is taking part in a duet no one else was ever meant to hear. Not everyone is blessed with a great singing voice, but the Sport Coupe treats her like a diva anyway. The redesigned interior offers 10-way adjustable sport front seats and a new leather-wrapped multifunction steering wheel that lets Emma change CD tracks, adjust the audio volume or even see how far she can go before a fuel stop. Charcoal-color grooved aluminum trims the console and doors, while hooded chrome rings encircle the gauges. And when Emma's got a passenger who wants a share of the spotlight, there's even dual-zone climate control to keep the two divas in at least some form of harmony.



∇ The fast and the luxurious Brody



C 55 AMG Sport Sedan shown with optional Brilliant Silver metallic paint and Lighting Package.

C 55 AMG Sport Sedan

Exterior

Staggered-width 18" wheels
CLK-inspired front-end styling
AMG-design lower bodywork
AMG-design rear lip spoiler

Interior

Nappa leather upholstery
Heated 10-way power sport front seats
AMG-design instrumentation
harman/kardon® digital surround sound



In a world where performance-car style seems to be far more common than actual performance, the C 55 AMG Sport Sedan¹ gives you both. No doubt, the C 55 looks the part of a true sports car—with CLK coupe-inspired front sheet metal, aggressive lower bodywork and staggered-width 18" wheels.² But the C 55 also drives the part, with a massively powerful handcrafted AMG V-8 engine churning out 362 horsepower and a 0–60 rush of just 4.9 seconds.³ A 5-speed automatic puts manual-style shifting right at Brody's fingertips with steering wheel-mounted buttons, while AMG SpeedShift™ programming delivers 35% quicker gear changes. Huge 4-wheel AMG disc brakes bring the C 55 to an almost instant stop. Inside the C 55's high-performance cabin, highly supportive sport front seats are wrapped in luxurious Nappa leather with Alcantara upper bolsters, while the doors and console are trimmed in cool aluminum. It's all designed to move you as eagerly as the red needle on the 200-mph speedometer.⁴ Sorry, no neon lighting. Actually, we take that back. We're not sorry.

Performance

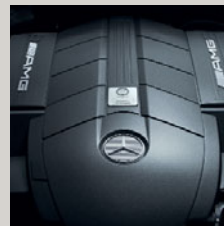
Engine:

Handcrafted 5,439-cc AMG V-8
362 hp @ 5,750 rpm
376 lb-ft of torque @ 4,000 rpm

Transmission:

Driver-adaptive 5-speed automatic with
Touch Shift, AMG SpeedShift
programming and fingertip manual mode

1 Delayed availability. See your dealer. 2 AMG 18" wheels and accompanying high-speed-rated tires provide substantially increased treadwear and reduced ride comfort compared to H-rated tires. Serious wheel and tire damage may occur if the vehicle is operated on rough or damaged road surfaces or upon encountering road debris or obstacles. 3 Stated rates of acceleration are based upon manufacturer's track results and may vary depending upon model, environmental and road surface conditions, driving style, elevation and vehicle load. 4 Obey local speed laws. Top speed electronically limited to 155 mph.



C-Class Sport PERFORMANCE

>> C 230 Kompressor Sport Sedan / C 230 Kompressor Sport Coupe

Engine:

Supercharged, intercooled 1.8-liter four
189 hp @ 5,800 rpm
192 lb-ft of torque @ 3,500–4,000 rpm

Transmissions:

Standard short-throw 6-speed manual
Optional driver-adaptive 5-speed
automatic with Touch Shift

>> C 320 Sport Sedan / C 320 Sport Coupe

Engine:

3.2-liter V-6
215 hp @ 5,700 rpm
229 lb-ft of torque @ 3,000–4,600 rpm

Transmissions:

Standard short-throw 6-speed manual
Optional driver-adaptive 5-speed
automatic with Touch Shift



C 230 Kompressor Sport Coupe shown with optional Steel Grey metallic paint and Sunroof Package.



C 320 Sport Sedan shown with optional Diamond Black metallic paint, Sunroof and Lighting Packages, and dealer-installed accessory chrome mirrors.

5-speed Touch Shift automatic ∨ ∨ 6-speed manual

World-renowned racecar drivers

Standard on every Sport Coupe and Sport Sedan is a precise and slick-shifting 6-speed manual transmission with a new direct-action linkage. As an option, you can hook your C-Class up with a driver-adaptive 5-speed automatic transmission that matches its shift points to suit your driving style. It's even got a Touch Shift feature that puts you in charge of gear changes with manual-style control.



You've heard of the 24 Hours of Le Mans. How about the 24 Minutes of Le Commute? With a C-Class Sport, it's a competition-inspired drive to work each morning. A quick snick of the standard 6-speed manual's short-throw shifter, and you're the next Juan Manuel Fangio.¹ Acceleration is brisk whether your C-Class is powered by the potent supercharged, intercooled four or the smooth-operator V-6. An electronically activated throttle and loads of torque launch you off the line. And with variable intake and exhaust valve timing on the supercharged four and a two-stage intake manifold on the V-6, there's always plenty of passing power on tap. Not that we're suggesting you break any laws, mind you. But, if you aren't careful, you might even get to work early.

¹ Give yourself 10 points if you knew that Fangio was a famous Mercedes-Benz racecar driver of the 1950s.

C-Class Sport HANDLING

Get a grip

That sporty new 3-spoke steering wheel isn't just for show, you know. We intend for you to put it to exhilarating use on every hairpin turn and twisting ribbon of asphalt you can find. With just 2.8 turns lock-to-lock, the steering is quicker and more precise. The handling response is sharper than an as-seen-on-tv knife: A wider stance, lowered ride height, and firmer springs and shock absorbers all enhance the 4-wheel independent multilink suspension. New staggered-width 17" wheels and Z-rated high-performance tires¹ are wider at the rear of the car to maximize traction during acceleration, while the front tires are sized to keep the steering nimble and crisp. And the C55 AMG's cornering ability is taken up yet another notch with 18" wheels,² AMG-developed coil springs and shock absorbers, thicker stabilizer bars and recalibrated ESP programming.

C230 Kompressor Sport Sedan / C320 Sport Sedan / C230 Kompressor Sport Coupe / C320 Sport Coupe / C55 AMG Sport Sedan

Sport-tuned suspension
Lowered ride height
Quick-ratio rack-and-pinion steering
Electronic Stability Program (ESP)

Staggered-width 17" alloy wheels and Z-rated high-performance tires¹
(18" wheels and tires² on C55 AMG)
Perforated front brake rotors with multipiston calipers (Sport Sedans)
Wider wheel stance

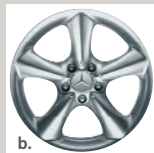


C320 Sport Sedan shown in Black with dealer-installed accessory rear spoiler.

¹ Z-rated tires are optimized for performance driving and may provide reduced ride comfort, increased tire noise, substantially increased treadwear and greater susceptibility to damage compared with H-rated tires. ² AMG 18" wheels and accompanying high-speed-rated tires provide substantially increased treadwear and reduced ride comfort compared to H-rated tires. Serious wheel and tire damage may occur if the vehicle is operated on rough or damaged road surfaces or upon encountering road debris or obstacles. ³ No system, no matter how sophisticated, can repeal the laws of physics or overcome careless driving actions. Please always wear your seat belt. ⁴ Braking effectiveness also depends on proper brake system maintenance, and tire and road conditions.



a.



b.

a. Sport Coupe
7.5 x 17 front
8.5 x 17 rear

b. Sport Sedan
7.5 x 17 front
8.5 x 17 rear



c.



d.

c. AMG Sport Sedan
7.5 x 18 front
8.5 x 18 rear
d. Accessory 18" wheel

Electronic Stability Program and traction control

It's not enough to expect the unexpected. You've got to be able to react as well. Our **Electronic Stability Program (ESP)** continuously monitors your steering and braking actions while you're cornering and compares them to the actual vehicle path. If it senses the onset of plowing (understeer) or fishtailing (oversteer), ESP brakes individual wheels and/or reduces excess engine power, to help keep you on course. ESP also incorporates traction control to help counteract wheelspin during acceleration.³

4-wheel disc brakes with ABS and Brake Assist

Along with standard 4-wheel antilock disc brakes, every C-Class benefits from our emergency-sensing Brake Assist. Mercedes-Benz research showed that drivers tend not to brake hard enough, soon enough, in an emergency. So we invented Brake Assist, which senses panic stopping by the speed at which you depress the brake pedal and automatically applies all available braking boost immediately. By helping to eliminate the delay caused by human nature, Brake Assist can potentially reduce stopping distances when it matters most.⁴

C-Class Sport SAFETY (1 of 2)

>> Active Safety

To help you avoid an accident:

- Electronic Stability Program (ESP)
- 4-wheel multilink sport-tuned suspension
- Quick-ratio rack-and-pinion steering
- 4-wheel disc brakes with ABS and Brake Assist

>> Passive Safety

To help protect you in certain accidents:

- Adaptive dual-stage front air bags
- Four side-impact air bags
- Head Protection Curtains
- A head restraint for every occupant
- Outboard seat-belt Emergency Tensioning Devices and belt force limiters
- Reinforced body structure
- Optional Tele Aid (standard on C55 AMG)

You never know who you might run into



It happens when you least expect it. And even though you can't predict an accident, you can prepare for one. It's something Mercedes-Benz has been doing for over half a century. Our integrated approach to safety starts by optimizing your ability to stay out of harm's way, with responsive handling and features such as our **Electronic Stability Program (ESP)** and emergency-sensing Brake Assist. When a collision is simply unavoidable, the C-Class is prepared to help protect you with a robust structure, advanced safety technologies and the most standard air bags in its class. You might not know what lies around the corner, but you can drive confidently knowing your C-Class is always ready for an impromptu meeting.



> **Advanced seat belts**

All four outboard seat belts feature Emergency Tensioning Devices (ETDs), which help remove seat-belt slack in a sufficiently severe front or rear impact, and belt force limiters, which can help reduce the peak deceleration forces on belted occupants.

> **Eight standard air bags**

Every C-Class provides the 10-way protection of eight standard air bags, including adaptive dual-stage front air bags, four side-impact air bags, and **Head Protection Curtains** along the side windows for all four outboard occupants.¹

> **Occupant Classification System**

OCS automatically turns the front passenger's front air bag on or off – or helps determine its inflation rate – based on the weight category determined by weight sensor readings from the front passenger seat.²

> **Tele Aid**

The optional **Tele Aid** system³ uses GPS satellites plus a digital cellular link to provide 24-hour live assistance at the touch of any of three buttons in your C-Class. If you need help – or see someone who does – the SOS button is for summoning emergency aid. Press the *i*-button for information. And the wrench button connects you to our legendary Roadside Assistance. Tele Aid also includes Automatic Collision Notification, which engages the SOS function if an air bag or Emergency Tensioning Device (ETD) deploys, as well as Stolen Vehicle Tracking and Remote Door Unlock service.⁴



> **High-strength/low-alloy steel**

HSLA steel is used in critical areas throughout the C-Class body shell, to help create an exceptionally rigid structure designed to maximize integrity and minimize chassis flex for improved handling precision.

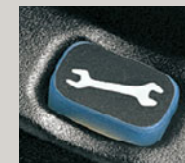
> **Side-impact protection**

Reinforced doors, door sills, floorpan, roof and dashboard supports in every C-Class are part of an integrated safety structure that affords formidable side-impact protection.

> **Advanced crumple zones**

Front and rear crumple zones feature full-width crossmembers. An ellipsoidal front bulkhead helps transfer some impact energy around the cabin, and staggered underhood components are designed not to stack up as the front zone deforms.

¹ **WARNING:** THE FORCES OF A DEPLOYING AIR BAG CAN CAUSE SERIOUS OR FATAL INJURY TO A CHILD UNDER AGE 13. THE SAFEST SEATING POSITION FOR YOUR CHILD IS IN THE REAR SEAT, BELTED INTO AN APPROPRIATE, PROPERLY INSTALLED CHILD SEAT, OR CORRECTLY WEARING A SEAT BELT IF TOO LARGE FOR A CHILD SEAT. ² C 230 Kompressor and C 320 Sport Sedans produced before approximately late summer 2004 and the C 55 AMG do not include OCS and feature the BabySmart™ system, which automatically deactivates the front passenger's front air bag when an accessory BabySmart-compatible child seat is properly installed. **OCS IS DESIGNED TO TURN THE FRONT PASSENGER'S FRONT AIR BAG OFF WHEN THE SYSTEM SENSES THE WEIGHT OF A TYPICAL CHILD 12 MONTHS OLD OR LESS, PLUS THE WEIGHT OF A STANDARD APPROPRIATE CHILD RESTRAINT. WITH THE BABYSMART SYSTEM, A CHILD UNDER 13 MUST NOT USE THE FRONT SEAT UNLESS THE CHILD IS BELTED INTO AN APPROPRIATE, PROPERLY INSTALLED BABYSMART-COMPATIBLE CHILD SEAT AND THE "PASSENGER AIR BAG OFF" INDICATOR REMAINS ILLUMINATED. SEE OPERATOR'S MANUAL TO DETERMINE WHICH SYSTEM YOUR VEHICLE HAS, FOR IMPORTANT ADDITIONAL INFORMATION ON THESE SYSTEMS, AND FOR FURTHER INFORMATION REGARDING THE TRANSPORTATION OF CHILDREN HEAVIER THAN A TYPICAL 12-MONTH-OLD.** ³ Standard on C 55 AMG. ⁴ Tele Aid equipment includes first year's basic Tele Aid service at no additional cost with subscription. Subscription and acquaintance call required for service to be active. System operates only where cellular and Global Positioning System coverage are available. Owner must authorize stolen vehicle tracking by providing a personal PIN code and file a police report.



C-Class OPTIONAL EQUIPMENT

C-Class options suit your driving preferences and reflect your sense of style. Choose from an array of communication, entertainment, information and security options and services that can make your in-car experience satisfying in ways you might never have imagined.



> 6-disc CD changer

Conveniently mounted in the glovebox and fully integrated with the audio or COMAND system in your C-Class, the optional 6-disc CD changer puts hours of your favorite music close at hand.

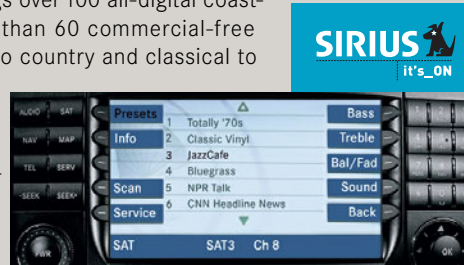
> Hands-Free Communication System (compatible portable phones sold separately)

Plug one of our sleek new accessory **Motorola phones** into your C-Class, and it becomes part of our integrated Hands-Free Communication System.² With the phone docked in the armrest cradle, your phone book is automatically downloaded into the vehicle while the phone battery charges, and the phone is connected to the car's integrated antenna system. Calls are clearly delivered through the audio system, which automatically mutes the radio or pauses the CD. You can even control calls via the multifunction steering wheel. Your Mercedes-Benz dealer offers a selection of the latest Motorola mobile phones for most major carriers.



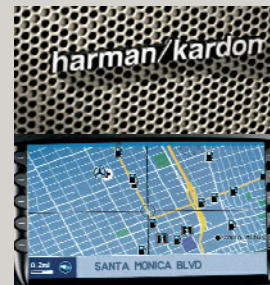
> SIRIUS Satellite Radio

It's like having a music library of over two million songs in your Mercedes. SIRIUS Satellite Radio¹ integrates with the factory audio system and controls. Your SIRIUS subscription brings over 100 all-digital coast-to-coast streams, with more than 60 commercial-free streams of music, from rock to country and classical to jazz, plus over 40 non-musical streams that cover news, sports – including live games from the NHL,[®] NBA and NFL[®] – and such well-known names as Discovery Channel, E!, and Radio Disney.



> harman/kardon digital surround sound

With 320 total watts and 12 speakers, the new harman/kardon LOGIC7 7.1-channel sound system (standard in the C320 and C55 AMG Sport Sedans) lets you enjoy the radio, CDs and optional satellite radio in digital surround sound.



> COMAND with DVD navigation

The optional Cockpit Management and Data system integrates the radio, CD, GPS satellite navigation,³ and controls for the optional phone and glovebox-mounted 6-CD changer into a single in-dash unit that you can access from the multifunction steering wheel. Its large color-LCD screen provides clear displays and crisp map readouts. And with the new DVD-based navigation system, the maps of the contiguous U.S., Hawaii and Canada are all read from a single DVD. To keep your DVD maps and points of interest as up-to-date as possible, ask your dealer about our NavUpdate subscription program, which lets you receive annual DVD updates for up to three years at significant savings.

> Heated front seats⁴

Take the chill out of even the coldest day or offer some soothing warmth to your back with optional heated front seats. Three heat settings let you select the level of soothing warmth.



> Digital climate control

For even greater control of your comfort than the standard dual-zone system, this optional system adds separate left and right controls for the airflow distribution, as well as a humidity sensor to help prevent window-fogging, a smog-sensing charcoal odor filter, and a digital display.



> Bi-Xenon headlamps

Bi-Xenon headlamps produce brighter light on both high and low beams, and feature dynamic level control to cut glare, as well as heated high-pressure washers. Sport Coupes also include new corner-illuminating front foglamps that can improve side lighting in turns.



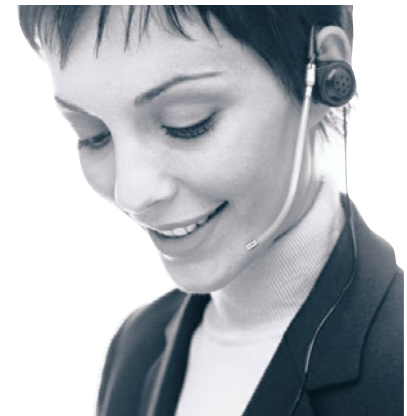
¹ Programming subject to change. Not available in Alaska, Hawaii or Puerto Rico. While the SIRIUS network of satellite and terrestrial antennas provides nearly seamless service throughout the contiguous U.S., SIRIUS service may be unavailable or interrupted for a variety of reasons, including environmental or topographic conditions; in certain locations such as tunnels, parking garages, or within or next to large buildings; or near other technologies that can interfere with the SIRIUS signal. SIRIUS, the dog logo and SIRIUS stream names and logos are trademarks of SIRIUS Satellite Radio. NHL[®] is a registered trademark of the National Hockey League. NFL[®] is a registered trademark of the National Football League and its affiliates. The National Basketball Association name is the property of NBA Properties, Inc. ² For safety reasons, we encourage the driver to stop the vehicle in a safe place before answering or placing a call. Always dock the phone in the cradle for use inside the vehicle. Operating a phone or radio transmitter with its own attached or built-in antenna while the engine is running can interfere with the vehicle's electronic systems. ³ DVD-ROM maps do not cover all areas nor all routes within an area. One U.S./Canada DVD-ROM is included with vehicle. ⁴ Standard on C55 AMG.

> Optional Tele Aid and telematics packages

With the optional **Tele Aid** system,¹ we're here to help you with everything from simple questions to tough situations. Three buttons in your C-Class give you a direct connection to Mercedes-Benz support and people who specialize in knowing what to do when it comes to helping preserve your safety, your schedule and maybe even your sanity.

The system is simple: Press the *i*-button and the Mercedes-Benz Customer Assistance Center can help you get answers to vehicle questions or locate a dealer. If trouble strikes, the SOS button will connect you to our emergency response center, who can summon paramedics and police, and call your on-file emergency contacts. And if an air bag or seat-belt ETD deploys, the system will automatically call for help and alert us to your location by satellite. Press the wrench button for roadside service and so much more. You'll be connected to a trained professional who knows your location, the model of your car, even its color. Your basic Tele Aid subscription package can even help you when you're away from your car, with services such as Remote Door Unlock, Automatic Alarm Notification, Stolen Vehicle Recovery,² and Dealer Connect.

Tele Aid offers additional features that include personalized traffic information, live help with driving directions, and more ways to enhance your in-car experience.



> 24-hour Roadside Assistance for the life of the vehicle

The first of its kind, the Mercedes-Benz Roadside Assistance Program is still the only one that remains in effect for the entire life of the car. Our Roadside Assistance technicians can draw on years of experience and training to get you back on the road as quickly as possible.³

> Mercedes-Benz warranties

Our New Vehicle Limited Warranty runs 48 months or 50,000 miles, whichever comes first. And anytime during the first year of new-vehicle ownership, you can also purchase a Mercedes-Benz Extended Limited Warranty that will provide additional protection when the New Vehicle Limited Warranty expires.⁴

> The new Mercedes-Benz Maintenance System

We've made caring for your C-Class Sport Coupe or Sport Sedan easier than ever. With the Mercedes-Benz Maintenance System, the service intervals are fixed and predictable — every 13,000 miles or one year.⁵ (10,000 miles/1 year for AMG models.) Your car will even remind you, about a month before service is due, via an automatic display on the dashboard that also tells you which type of maintenance service is due.

> The Mercedes-Benz Service Welcome

Getting proper care for your Mercedes is easiest when you go to the people who know your vehicle — and you — best: your Mercedes-Benz Center's Service Department. And to help you get acquainted, just bring your car in for a no-charge first visit between 1,000 and 3,000 miles, where your dealer will perform a diagnostic check and address any questions you might have. It's part of our Service Welcome, which also provides a check of your tires at no charge anytime before 6,500 miles.⁶

> 24-hour customer service

Our Customer Assistance Center is your one-stop source for answers. Whether you need to know how to use your audio system, find the nearest Mercedes-Benz dealer, get pricing, or learn about personal and automotive accessories, just call 1-800-FOR-MERCEDES or, if you have the optional Tele Aid system, press the Tele Aid *i*-button in your car.¹

> Mercedes-Benz Credit

For qualified customers, leasing and financing are available through Mercedes-Benz Credit. Visit them on the Internet at mbcredit.com.

> Sign and Drive

Our legendary Roadside Assistance service includes bringing you some fuel if you've run out, replacing a flat tire with your spare, or jump-starting your car if the battery dies. All at no charge, and all for as long as you're driving a Mercedes-Benz — even somebody else's.⁷ Help is just a call away at 1-800-FOR-MERCEDES — or it can be as close as the wrench button¹ of your car's optional Tele Aid system.

> Trip Interruption benefits

In the unlikely event that a breakdown covered by your MBUSA New Vehicle Limited Warranty occurs more than 100 miles from your home, leaves your Mercedes inoperable or unsafe to drive, and requires overnight repairs at a Mercedes-Benz Center, you'll be reimbursed up to \$300 per day for any documented expenses — for up to three days — for meals, lodging and substitute transportation.

> Alternate Transportation

When you bring your vehicle into a Mercedes-Benz Center for servicing during the warranty period, ask about your dealer's Alternate Transportation Program — so you can maintain your busy schedule while we maintain your car.⁸

¹ Standard on C 55 AMG. When equipped with Tele Aid, first year's basic Tele Aid service provided at no additional cost with subscription. Subscription and acquaintance call required for service to be active. Service operates only where cellular and Global Positioning System coverage are available. ² Owner must authorize stolen vehicle tracking by providing a personal PIN code and file a police report. ³ Roadside Assistance repairs may involve charges for parts, service and towing. Depending on the circumstances, these services may be provided by an outside service, courtesy of Mercedes-Benz Roadside Assistance. ⁴ Please see your dealer for warranty details as well as for terms, conditions and pricing for extended limited warranty options. ⁵ Whichever comes first. Requires use of 229.5-spec oil and high-performance fleece oil filter. Driver is responsible for monitoring fluid levels and tire pressures between service visits. See Maintenance Booklet for details. The Service Welcome replaces the Mercedes-Benz Maintenance Commitment, which is discontinued as of model year 2005. ⁶ Follow tire manufacturer's recommendations. ⁷ For full details of Sign and Drive services, as well as the Roadside Assistance Program, please see your dealer. ⁸ Certain restrictions may apply. Terms, conditions and dealer participation may vary.

Who cares about being first?

Your neighbor.



Neighborhood watch takes on a whole new meaning

When you own a Mercedes, you'll just have to face up to the fact that people will look, and people will talk. But that's really nothing new, because the world has been fascinated by Mercedes-Benz design as long as there have been Mercedes automobiles. Our secret? We don't style a car to look good for just this year, or even the next few years. Instead, we believe a Mercedes should inspire passion for a lifetime. It's why many of our creations not only become more desirable as time goes by, but some, like the 300SL Gullwing of the 1950s, even become cultural icons. They've been immortalized in the art of Andy Warhol and in music from Janis Joplin to Jay-Z. You'll even find that the CL-Class and CLK-Class are the leaders in a modern renaissance of pillarless coupe design. So it shouldn't surprise you that Mercedes owners often become Mercedes collectors, and that certain models are now worth hundreds of thousands of dollars. And while only the rarest models are likely to reach those kind of values, we think that with its timeless style, your appreciation of your Mercedes will begin almost immediately. And that's something worth looking into.



E 320 Sedan



Who cares about being first?

Every automaker.

Every car on the road is a Mercedes

Wishful thinking on our part? Perhaps. But more important, no matter what kind of vehicle you drive, you're probably enjoying technology that Mercedes-Benz developed first. Since 1886, when we patented the very first automobile, we've been continually testing, designing and innovating to make automobiles better. In fact, Mercedes-Benz has pioneered, patented and introduced thousands of advances in performance, safety and convenience – many of which eventually show up on virtually every automobile. Along the way, we've created items that many might take for granted now, but were revolutionary when they were introduced, including fuel injection, 4-wheel independent suspension – even the honeycomb radiator design of 1901 that still makes efficient engine-cooling possible today. You'll also find state-of-the-art safety features like our **ESP** stability control and emergency-sensing Brake Assist. We're flattered that so many of our competitors adopt our technology. So if you're wondering what all cars will have in the future, all you have to do is see what's on a Mercedes today.

No company has done more to improve the automobile than the one who invented it

In 1886, Karl Benz earned the patent for the first automobile. He went on to earn the patents for the first motorcycle and the first truck, too. Having developed such revolutionary ideas for their time, an ordinary man might have decided to rest on his laurels. But Karl Benz loved machinery – especially automobiles. And he loved to innovate, continually improving and even reinventing his ideas. Over the years, the

vision, spirit and determination of one man grew to become the defining character of one company – Mercedes-Benz. Whether it's the advancement of performance, safety, durability or convenience, the inquisitive spirit of the man who invented the very first automobile lives in everything we do, even to this day. You might say that Mercedes-Benz has been reinventing the automobile for 119 years.



1886
The first car

1911
The first multivalve engine

1921
The supercharged engine

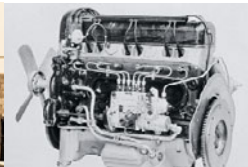
1931
Independent suspension



1936
The first diesel passenger car



1951
The crumple zone



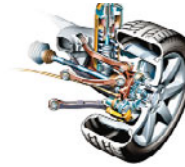
1954
Fuel injection



1971
A patent for the air bag



1981
Seat-belt Emergency Tensioning Device (ETD)



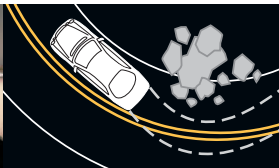
1982
Multilink rear suspension



1985
Electronic traction control



1989
The pop-up roll bar



1995
Electronic Stability Program



1996
Panorama roof



1997
The first compact fuel-cell car



1997
Low-emission SUV



1997
Brake Assist



1997
BabySmart™ system



1997
SmartKey



1997
Touch Start



1998
Head Protection Curtains



1998
10-way air-bag protection



1999.....



1999
Active Body Control

> The most advanced active suspension on the market, ABC uses a system of sensors and electronically controlled high-pressure hydraulics to instantly counteract the forces of vibration, pitch, dive, squat and roll. You can also raise the ride height for added clearance.



1999
Climate-control seat-belt usage sensors

> Seat-belt usage sensors allow the climate control to focus first on occupied seating positions. A perfect example of how Mercedes-Benz systems work together to make things better for you.



1999
Airmatic semi-active suspension

> Airmatic uses electronically controlled air springs to maintain an ideally balanced ride. It also lowers the ride height at higher speeds for improved aerodynamics and fuel efficiency. And automatic 4-wheel level control responds to passenger and cargo loads.



2000
Distronic adaptive cruise control

> The industry's first adaptive cruise control, Distronic monitors the distance of the vehicle ahead to help maintain your preset speed and following distance automatically.¹



2001
Keyless Go

> Keyless Go lets you lock or unlock your vehicle without removing the key from your pocket or purse. Start-up is equally easy: Put your foot on the brake, tap the top of the gearshift, and you're ready to drive off.



2002
Drive-Dynamic front seats

> When you're cornering, air chambers in each side bolster automatically inflate and deflate to help hold you in position. Make a hard left turn, and the right bolster firms up with air. A sharp right, and the left side inflates.



2002
PRE-SAFE

> If, by monitoring the Brake Assist and the Electronic Stability Program, PRE-SAFE[®] senses that an accident is possible, it will take action to better protect you, including tensioning the front seat belts, adjusting the front passenger seat—even closing the sunroof for an imminent rollover.



2002
Twin-turbo V-12 engine

> The recipe for 493 hp and 590 lb-ft of torque includes such impressive technology as two liquid-to-air intercoolers, die-cast alloy engine block, heads and pistons, and magnesium cylinder-head covers.



2002
Sensotronic Brake Control

> The world's first production electrohydraulic braking system uses its genius to improve everyday driving situations. Lift your foot off the accelerator quickly—as you would when making a sudden stop—and Sensotronic sets the brake pads closer to the discs for even quicker response. Turn on the windshield wipers, and Sensotronic periodically and imperceptibly applies the brakes to keep them drier and ready for action.



2003
7-speed automatic transmission

> Another industry first, the 7-speed automatic transmission finds the ideal gear for every situation, while providing smoother, quicker shifts that keep the power coming on strong at virtually any speed.



2004
New high-output, high-efficiency engines

> With the launch of the 2005 SLK, an all-new engine family debuts. In the SLK 350, it's a 36-valve DOHC V-6 producing 268 hp and featuring continuously variable intake and exhaust valves, a two-stage intake manifold, innovative tumble flaps in the intake ducts, and alloy heads and block.

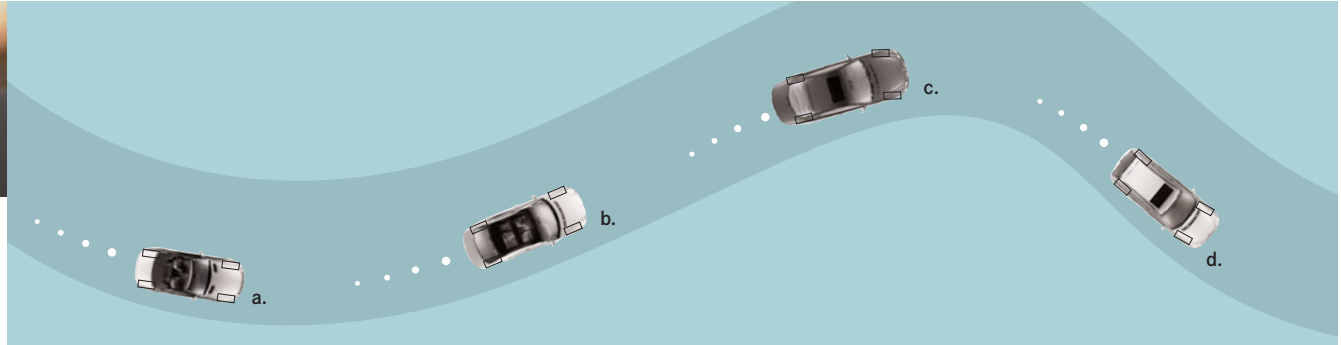
Some features are optional or not available on some models. See model brochure or your dealer for details.

¹ Distronic adaptive cruise control is no substitute for active driving involvement. It does not react to stationary objects, nor recognize or predict the curvature and lane layout of the road or the movement of vehicles ahead, and it can only apply a maximum of 20% of vehicle braking power. It is the driver's responsibility at all times to be attentive to traffic and road conditions, and to provide the steering, braking and other driving inputs necessary to retain control of the vehicle.



Graded on a curve

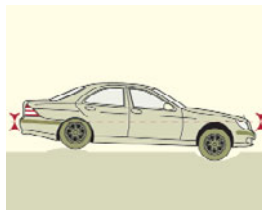
When the road tests the mettle of a vehicle's handling systems, you want nothing less than outstanding performance. That's why every Mercedes-Benz offers industry-leading innovations, such as our pioneering ESP stability control that remains the standard of the industry. Select models employ our Airmatic air suspension that proves a car can give sport-sedan performance without sacrificing a luxurious ride. For true handling honors, look no further than our **Active Body Control (ABC)** – the most advanced active suspension system available – which can virtually eliminate body roll when cornering. And for advanced studies in traction, Mercedes innovations include the revolutionary 4-wheel Electronic Traction System (4-ETS), and the all-season grip of 4MATIC™ all-wheel drive. So while others may hope for a passing grade, we're only happy when we set the curve.



a. **Electronic Stability Program (ESP)**

Every Mercedes enjoys a handling advantage that allows it to react quickly and confidently to unexpected driving situations. It's our **Electronic Stability Program**, which continuously monitors your steering and braking actions while you're cornering and compares them to the actual vehicle path. If it senses the onset of plowing (understeer) or fishtailing (oversteer), ESP brakes individual wheels and/or reduces excess engine power, to help keep you on course. ESP also incorporates traction control to help control wheelspin during acceleration.¹

¹ No system, no matter how sophisticated, can repeal the laws of physics. Performance is limited by available traction, which snow, ice and other conditions can affect. Always drive carefully, consistent with conditions. Best performance in snow is obtained with winter tires.



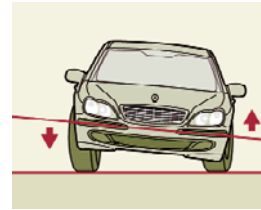
b. **Multilink suspensions and ADS II adaptive damping**

For legendary control, every Mercedes passenger car enjoys 4-wheel multilink suspension² featuring antidive geometry for exceptional poise, even under severe braking. The rear multilink design – a Mercedes innovation – controls rear-wheel movement with outstanding precision, making it ideal for rear-wheel-drive vehicles. Part of our Airmatic air suspension³; the Adaptive Damping System (ADS II) lets you tailor your driving experience with three selectable suspension modes – two for sport and one for comfort – and continually optimizes ride and handling by individually adjusting each wheel's shock absorber every time the wheel changes its direction of up/down travel.

² Double wishbone front suspension on E-Class and S-Class models with 4MATIC all-wheel drive. ³ Airmatic and ADS II standard on E500, E55 AMG, S430 and S500 models, and optional on E320 models (except E320 CDI).

4-wheel Electronic Traction System

Our advanced 4-wheel Electronic Traction System (4-ETS) is an innovation in all-wheel traction that can help get your all-wheel-drive Mercedes moving even if only one wheel has grip. If 4-ETS detects the onset of wheelspin, it applies the brakes to the slipping wheel or wheels, to restore the balance of the engine's torque to all four wheels. By simulating the effect of locking the front, center or rear differentials, 4-ETS helps ensure that power is sent to where the traction is – even if that's only one wheel.¹ There are no buttons to push or levers to engage. It's an integral part of the full-time 4-wheel drive and Electronic Stability Program (ESP) of every M-Class and G-Class, and every Mercedes sedan or wagon with 4MATIC all-wheel drive.



c. **Active Body Control (ABC)**

ABC allows you a driving experience you simply cannot find elsewhere, providing an ideal balance of ride and handling, and is capable of cornering with virtually no body roll. ABC uses a system of sensors and electronically controlled high-pressure hydraulics to instantly counteract the forces of vibration, pitch, dive, squat and roll. Self-leveling, automatic-lowering ABC even lets you raise the ride height for added clearance on rutted roads or in deep snow.

Active Body Control (ABC) standard on SL-Class, CL-Class, S55 AMG and S600, and optional on S430 and S500.



d. **4MATIC all-wheel drive**

With 4MATIC, you get the outstanding control of all-wheel drive without sacrificing true sport-sedan driving enjoyment. The system is always engaged and always sending torque to every wheel. With 60% of the overall torque distributed to the rear wheels, crisp steering and the balanced feel of a rear-wheel-drive vehicle are retained, making a 4MATIC Mercedes a joy to drive in any season. And 4MATIC works together with our standard corner-taming ESP, enhancing the all-wheel advantage through curves in rain, snow or even sun.

4MATIC optional on C-Class Luxury models, E-Class (except E320 CDI and E55 AMG), S430 and S500, and standard on E500 4MATIC Wagon.

Who cares about being first?

Lifesavers.

When you don't have a second to lose

The streets of Copenhagen are narrow, twisty and often made of cobblestone. They're also the lifeline for the Danish Ambulance Service, which has made over 12,500 emergency responses in their Mercedes SUVs. Working as a team, driver Torben Bang Christensen, Dr. Annemarie Sørensen and their ML 320 leave the hospital hundreds of times each year with one goal in mind – being first on the scene of a medical emergency. Sometimes they travel at high speed through those narrow streets. And sometimes they need to use the sidewalk, or cut across parks – whatever it takes. Dodging cars, cyclists and pedestrians along the way. Even the weather throws down its own challenges, including sleet, rain and heavy winter snow. And no matter what obstacles may come their way, with its durability, responsiveness and vault-like security, both Annemarie and Torben agree: “When we drive in the ML, we feel very safe.”





116 heads of state

Wolfgang Wöstendieck is a chauffeur who drove for the German government for many years. In his tenure, he had the honor of carrying 116 heads of state, including presidents, premiers and prime ministers. And regardless of title, they all enjoyed the security, luxury and serenity of his Mercedes-Benz 600 "Pullman" limousine — even when they needed to travel at speeds approaching 120 mph. These magnificent automobiles were made to order in the '60s and '70s, and many still carry the world's dignitaries from place to place today. Reunited with one of the 600s he drove — now a cherished museum piece — Wolfgang's fondness for the car remains strong. Immaculately dressed and soft-spoken, he proudly shows the car's special amenities such as the reclining rear seats or the soft amber interior lighting. When it's time to go, it shouldn't surprise you that Wolfgang drives off in his own Mercedes-Benz. After all, he wouldn't dream of treating the dignitaries in his life to anything less.

Lifetime Roadside Assistance

The first of its kind, the Mercedes-Benz Roadside Assistance Program is still the only one that remains in effect for the entire life of the vehicle. Our Roadside Assistance technicians are accomplished problem-solvers who can draw on years of experience and training to get you back on the road as quickly as possible. And if that isn't impressive enough, our legendary Roadside Assistance service includes Sign and Drive, which will bring you some fuel if you've run out, replace a flat tire with your spare, or jump-start your car if the battery is dead. All at no charge, and all for as long as you're driving a Mercedes-Benz — even somebody else's. And while this is more than any other manufacturer provides, when it comes to your peace of mind, we wouldn't consider doing any less!



Tele Aid wrench button

Press the wrench button to request our legendary Roadside Assistance. You'll be connected to a trained professional who knows your location, the model of your car, even its color.²



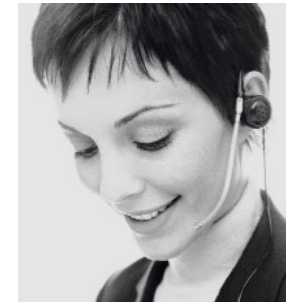
Tele Aid SOS button

When trouble strikes, help for you or others is just the push of a button away. The SOS button will connect you to Mercedes-Benz emergency response personnel who can summon paramedics and police, and call your on-file emergency contacts. And you can feel secure knowing that if your air bag deploys, the system will automatically call for help, and will alert us to your location by satellite.²



Tele Aid i-button

Information, please. Press the i-button and the Mercedes-Benz Customer Assistance Center can help you get answers to vehicle questions or locate your nearest Mercedes-Benz dealer. To further enhance your ownership experience, you can also use the i-button to connect to optional services such as Route Assistance and Traffic Information.²



Traffic Information and Route Assistance

An option of your Tele Aid subscription features an automated voice menu to give you hands-free access to information you need.

Tele Aid's Traffic Information service offers real-time, voice-delivered traffic reports that are based on your vehicle's current location — within a 5-mile radius, or along any of up to five regular commutes that you program at our website. Traffic reports are available in over 100 cities and can be updated every minute.

Unlimited, nationwide operator-delivered Route Assistance can help get you to your destination with a minimum of wasted time.

¹ Roadside Assistance repairs may involve charges for parts, service and towing. Vehicle must be accessible from main roads. Depending on the circumstances, these services may be provided by an outside service, courtesy of Mercedes-Benz Roadside Assistance. For models factory-equipped with no spare tire, Roadside Assistance will attempt to reinflate a flat tire after using the vehicle's Tirefit puncture sealant. For full details of Sign and Drive services, as well as the Roadside Assistance Program, please see your dealer. ² First year's basic Tele Aid service provided at no additional cost with subscription. Subscription and acquaintance call required for service to be active. Tele Aid operates only where cellular and Global Positioning System coverage are available. See your dealer for details of telematics services.