



# '09 Mercury GRAND MARQUIS





# '09 Mercury GRAND MARQUIS

## Flexibility is Power.

With 224 hp and 275 lb.-ft. of torque to lead the way, the 4.6L SOHC V-8 in Grand Marquis is a powerful ally. As is an EPA-estimated 23 mpg<sup>1</sup> on the highway. A Flexible Fuel configuration makes it even more noteworthy by giving you a choice: E85 or gasoline. The 2009 Grand Marquis can run on E85 (85% ethanol/15% gasoline), straight gasoline, or any combination of the 2 – just fill up with your fuel of choice. As you drive, an advanced Powertrain Control Module determines the ethanol/gas mixture and automatically adjusts for optimum performance. Electronic Throttle Control manages all that muscle for smooth shifts from the 4-speed electronic automatic transmission with overdrive.

Sure handling results from an independent front suspension, Watts linkage rear suspension, gas-charged shocks and speed-sensitive, variable-assist power rack-and-pinion steering. A rear air suspension makes the already smooth ride of Grand Marquis even more comfortable. For added stability, the 4-wheel disc Anti-lock Brake System helps you maintain control during hard braking, while All-Speed Traction Control improves grip on loose or slippery surfaces.

<sup>1</sup>Based on 2008 EPA-estimated fuel economy.







# '09 Mercury GRAND MARQUIS



## Style and Comfort.

Whether the evening is a casual get-together with friends or a formal engagement at the theater, Grand Marquis helps you arrive feeling relaxed and refreshed. While Electronic Automatic Temperature Control effortlessly maintains the chosen cabin temperature, a leather-wrapped, tilt steering wheel fits comfortably in the driver's hands. Individual driver and right-front-passenger armrests provide more flexibility than a single armrest. And a message center with trip computer displays outside temperature, elapsed drive time, average fuel economy and other vehicle functions. To accommodate various tastes in music, as well as formats, Grand Marquis offers a choice of audio systems. The standard AM/FM stereo features a single-CD player, while an optional Dual-Media audio system plays both CDs and cassettes.



# '09 Mercury GRAND MARQUIS



## Still Sized Just Right.

Mercury Grand Marquis for 2009 values the items you hold dear. Like 6-passenger seating in the most spacious interior in its class,<sup>1</sup> where family and friends can travel together – in one car – and in complete comfort. Or thoughtful design and functional features that are still standard equipment: a 6-way power driver seat with power lumbar and recline; a leather-wrapped steering wheel; a 6-way power front-passenger seat with power lumbar; leather-trimmed seating (heated front seats are optional); illuminated visor vanity mirrors for both driver and front passenger; cruise control; tilt steering column; carpeted floor mats; and elegant Renaissance Burl woodgrain accents all around. Those seated comfortably in the rear will enjoy their own amenities. A fold-down rear-seat center armrest features 2 cupholders, while reading lights help the hours pass by on longer trips. And with 20.6 cu. ft. of cargo space in its cavernous trunk, Grand Marquis can hold everything you need to bring along for the ride.

<sup>1</sup>6-passenger Large Car class.



# '09 Mercury GRAND MARQUIS



## Cradled in Comfort.

With the available Dual-Media Audio System playing your favorite CD or cassette, your comfortable journey begins in the leather-trimmed, 6-way power driver seat of Mercury Grand Marquis. With power recline and a power lumbar feature for additional back support, it's easy to find your perfect position. For the ultimate in cold-weather comfort, optional heated front seats chase away any chill.

Additional assistance for the driver comes from a leather-wrapped, tilt steering wheel with steering wheel-mounted cruise control, as well as optional power-adjustable brake and accelerator pedals that can move up to 2" forward and back.

In a vehicle with such a spacious interior, it's only appropriate that it should have an equally expansive trunk. How about 20.6 cu. ft.? That's enough to fit 6 golf bags.

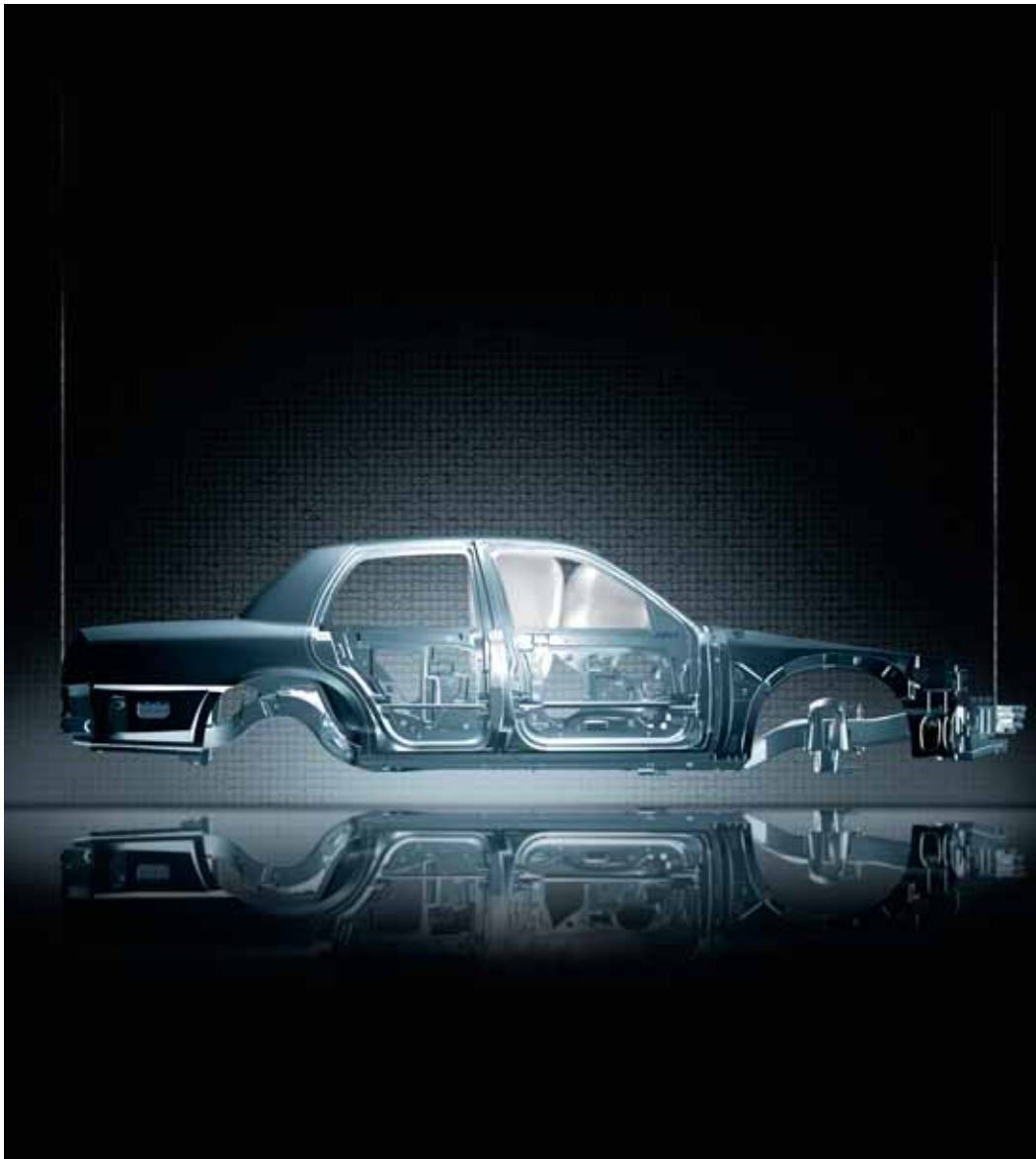
For even more utility, get the available interior cargo organizer<sup>1</sup> (shown at right). It fits deep inside the trunk and features top panels that provide a flat floor when the unit is closed. Removable, adjustable dividers create handy storage compartments that help keep items in place.

<sup>1</sup>Available through your Mercury Dealer as a Genuine Mercury Accessory.





# '09 Mercury GRAND MARQUIS



## A Heritage of Safety.

For 13 consecutive years (1996–2008), Mercury Grand Marquis received the government's highest 5-Star frontal crash test rating.<sup>1</sup> But the good news doesn't end there. With front-seat side airbags (shown left), Grand Marquis received a 5-Star crash test rating in all 5 categories – driver frontal impact, front-passenger frontal impact, front-seat side impact, rear-seat side impact and rollover resistance – an achievement it garnered 5 years in a row (2004–2008).

Side-intrusion door beams add structural stability, absorb energy, and help reduce cabin intrusion in certain side impacts. Power, heated sideview mirrors melt ice and snow buildup and help keep your view clear.

<sup>1</sup>Star ratings are part of the U.S. Department of Transportation's Safercar.gov program ([www.safercar.gov](http://www.safercar.gov)).



# '09 Mercury GRAND MARQUIS

## STANDARD FEATURES

### POWERTRAIN/FUNCTIONALITY

4.6L SOHC V-8 FEV engine  
 4-speed electronic automatic transmission with overdrive  
 4-wheel disc brakes with Anti-lock Brake System (ABS)  
 19-gallon fuel tank capacity  
 All-Speed Traction Control  
 Automatic parking brake release  
 Front and rear stabilizer bars  
 Independent front suspension  
 Rear air suspension  
 Speed-sensitive, variable-assist power steering

### INTERIOR

AM/FM stereo with single-CD player  
 Auto-dimming rearview mirror  
 Carpeted floor mats  
 Chrome door-release handles  
 Cruise control and tilt steering column  
 Dual front cupholders  
 Electronic Automatic Temperature Control  
 Fold-down front-seat center armrests  
 Fold-down rear-seat center armrest with dual cupholders  
 Illuminated entry with theater-dimming feature  
 Leather-trimmed seats with 6-way power driver and front-passenger seats with power lumbar and recline  
 Leather-wrapped steering wheel  
 Message center with trip computer  
 Power door locks with remote decklid release  
 Power windows with one-touch-down driver-window feature  
 Rear-seat reading lights  
 Rear-window defroster  
 Renaissance Burl woodgrain accents  
 Sun visors with illuminated vanity mirrors

### BASE MODEL DIMENSIONS

Wheelbase 114.6"  
 Length 211.1"  
 Width (excluding mirrors) 78.3"  
 Width (including mirrors) 85.7"  
 Height 58.3"  
 Front track 63.4"  
 Rear track 65.6"  
 Head room (front/rear) 39.5"/37.8"  
 Shoulder room (front/rear) 60.6"/60.0"  
 Hip room (front/rear) 57.4"/56.1"  
 Leg room (front/rear) 41.6"/38.0"

### WEIGHTS AND CAPACITIES

Seating capacity 6  
 Passenger volume 107.5 cu. ft.  
 Cargo volume 20.6 cu. ft.

### EXTERIOR

17" 14-spoke painted-aluminum wheels  
 P225/60TR17 all-season WSW tires  
 Automatic on/off headlamps with delay  
 Black door handles with chrome surround  
 Bodyside moldings  
 Chrome grille  
 Cornering lamps  
 Fog lamps  
 Power, heated sideview mirrors with body-color caps  
 Solar-tinted glass  
 Variable-intermittent wipers  
 Wraparound taillamps

### SAFETY/SECURITY

Personal Safety System<sup>®</sup> for driver and right-front passenger with dual-stage front airbags,<sup>1</sup> safety belt pretensioners, safety belt energy-management retractors, safety belt usage sensors, driver-seat position sensor, crash severity sensor, restraint control module and Front-Passenger Sensing System  
 Front-seat side airbags<sup>1</sup>  
 Remote keyless-entry system with SmartLock feature  
 SecuriCode<sup>™</sup> keyless-entry keypad  
 SecuriLock<sup>®</sup> passive anti-theft ignition system  
 Side-intrusion door beams  
 Tire Pressure Monitoring System (excludes spare)

### OPTIONAL FEATURES

17" 18-spoke chrome-aluminum wheels  
 Dual-Media AM/FM stereo with cassette and single-CD player  
 Heated front seats  
 Power-adjustable pedals  
 Smoker's Package  
 Wood- and leather-trimmed steering wheel with secondary audio and climate controls.

### GRAND MARQUIS AVAILABLE ACCESSORIES

Garmin<sup>®</sup> nüvi<sup>®</sup> Portable Navigation System<sup>2</sup>  
 Rear spoiler  
 Electrochromic mirrors  
 Remote start systems  
 Vehicle security system  
 Side window deflectors  
 Splash guards  
 Premium carpeted floor mats  
 Wiper Shaker<sup>2</sup>  
 Interior cargo net  
 Interior cargo organizer  
 All-weather floor mats

Visit [mercuryaccessories.com](http://mercuryaccessories.com) to use the Accessorizer, learn complete accessory details and view purchase instructions.



<sup>1</sup>Always wear your safety belt and secure children in the rear seat.

<sup>2</sup>Mercury Licensed Accessories.

Garmin is a registered trademark of Garmin Ltd.



**17" 14-SPOKE  
 PAINTED-ALUMINUM**  
 STANDARD ON LS



**17" 18-SPOKE  
 CHROME-ALUMINUM**  
 AVAILABLE ON LS

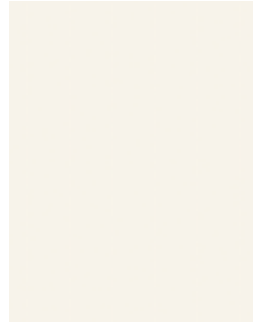


# '09 Mercury GRAND MARQUIS

LIGHT CAMEL LEATHER<sup>1</sup>



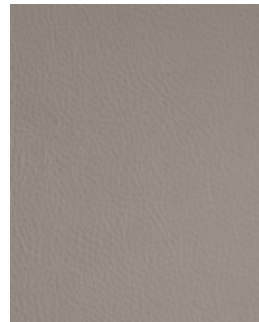
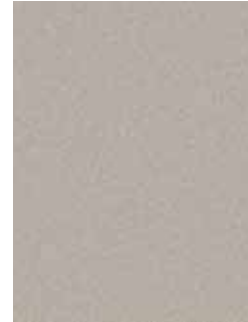
VIBRANT WHITE



SILVER BIRCH



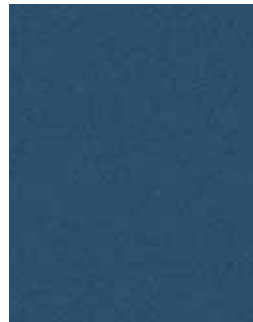
SMOKESTONE



MEDIUM LIGHT STONE LEATHER



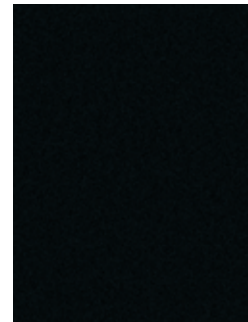
LIGHT ICE BLUE



NORSEA BLUE



DARK TOREADOR RED



BLACK

<sup>1</sup>Not available with Vibrant White or Black exterior colors.

Mercury uses clearcoat paint for beauty and protection. All exterior paints are Metallic except for Black. Colors are representative only.



Get the ride you want. Whether you plan to lease or finance, you'll find the choices that are right for you at Ford Credit. Ask your Lincoln Mercury Dealer for details or check us out at [fordcredit.com](http://fordcredit.com).

**Ford Motor Company Insurance Services** Get Ford Motor Company quality in your auto insurance. Our program offers industry-leading benefits and competitive rates. Call 1.877.367.3847, or visit us at [fordvip.com](http://fordvip.com) for a no-obligation quote. Insurance offered by American Road Services Company (in CA, American Road Insurance Agency), a licensed agency and subsidiary of Ford Motor Company.

**Ford Extended Service Plan** For a purchase or lease, the Ford Extended Service Plan (ESP) gives you "Peace-of-Mind" protection designed to cover key vehicle components and protect you from the cost of unexpected repairs. Ask your dealer for an ESP, the only service contract backed exclusively by Ford and honored at all Ford Lincoln Mercury dealerships.

Peace of mind comes from a 3-year/36,000-mile bumper-to-bumper **New Vehicle Limited Warranty** that covers repair, replacement or adjustment of parts at no additional cost, as well as a 5-year/60,000-mile powertrain limited warranty which features no deductible and is fully transferable. Roadside Assistance for 5 years or 60,000 miles provides the security of knowing that help may be only a phone call away should you run out of fuel, lock yourself out of the vehicle or need towing. Your Lincoln Mercury Dealer will provide complete details.

**Custom Accessories** Genuine Mercury Accessories will be warranted for whichever provides you the greatest benefit: 12 months or 12,000 miles (whichever occurs first), or the remainder of your Bumper-to-Bumper 36-month/36,000-mile New Vehicle Limited Warranty. Contact your local Lincoln Mercury Dealer for details and a copy of the limited warranty. Mercury Licensed Accessories (MLA) are warranted by the accessory manufacturer's warranty. Contact your Lincoln Mercury Dealer for details regarding the manufacturer's limited warranty and/or a copy of the MLA product limited warranty offered by the accessory manufacturer.

Comparisons based on 2008 competitive models (6-passenger Large Car class), publicly available information and Ford certification data at time of release. Some features discussed may be optional. Vehicles shown may contain optional equipment. Features shown may be offered only in combination with other options or subject to additional ordering requirements or limitations. Dimensions shown may vary due to optional features and/or production variability. Following release of this PDF, certain changes in standard equipment, options and the like, or product delays may have occurred which would not be included in these pages. Your Lincoln Mercury Dealer is the best source for up-to-date information. Lincoln Mercury reserves the right to change product specifications at any time without incurring obligations.

