



Innovation
that excites

2016
370Z[®]

WELCOME TO THE 2016 NISSAN 370Z[®] DIGITAL BROCHURE

Full of images, feature stories, and the specification and trim level information you need to help select your Z.[®]

[Click here](#) to sign up for news and updates on the 2016 Z.[®]





EVERY DRIVE is something special. Exhilarating. Memorable. Epic. An unmistakable connection between driver and machine – and maybe one lucky passenger. Fire up that 3.7-liter V6 and hear 332 hp sing through dual exhaust pipes. Take it into a turn and feel the dynamically balanced chassis just grip and grip. Revel as you make a perfect downshift, thanks to the world's first available rev-matching manual transmission. Experience the drive of your life in the sleek Coupe, the spirited Roadster, or the competition-bred 350-hp 370Z[®] NISMO[®]. It's time to make sure today **IS LEGENDARY.**

PASSION WITHOUT A REDLINE.

What happens when the fanatical engineers at NISMO® are let loose on the legendary 370Z®? You get 350 horsepower surrounded by a NISMO®-tuned suspension and a driver-focused interior, all wrapped in a jaw-dropping NISMO®-designed aerodynamic body. Obsessive? Perhaps. Extraordinary? Most definitely.

nismo®



Professional driver. Closed course. Obey all traffic laws, always drive safely and wear your seatbelt. Damage resulting from racing, competitive driving, track and/or airstrip use not covered by warranty. See your New Vehicle Limited Warranty and Owner's Manual for proper vehicle operation and complete warranty details.

nismo[®]

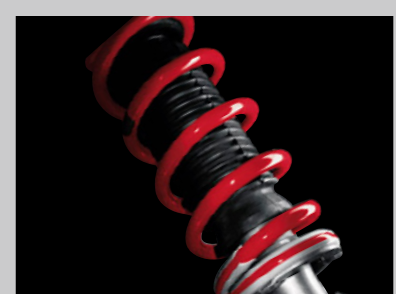
NISSAN 370Z[®] NISMO[®] |||||

INNOVATION THAT LIVES TO PUSH THE ENVELOPE.

Wouldn't it be cool to take a legend to the next level? With a name derived from Nissan Motorsports, you should expect nothing less from NISMO[®], our in-house performance arm. Started by a group of maverick Nissan engineers over 30 years ago, NISMO[®] is synonymous with passion, expertise, and the heights of Nissan performance – not to mention decades of racing dominance. NISMO[®] puts its all into everything it builds, from championship-winning racecars and accessories for street cars to cutting-edge vehicles like the 370Z[®] NISMO[®]. With 350 horsepower, a competition-tuned suspension, and a look uniquely its own, it is transformed into a sports car singularly worthy of being branded NISMO[®].



ENGINE |||||



SUSPENSION |||||



WHEELS BY RAYS[®] |||||

350 HP

Competition-tuned handling. Competition-inspired design. Serious grip starts with specially tuned springs, shocks, and stabilizer bars designed to satisfy the most demanding enthusiast. Extra braces on the front strut tower bar and special vibration dampers on the front body frame rail and rear subframe are added for impressive overall body rigidity and the feel of a controlled ride. A true work of performance art, the 370Z[®] NISMO[®] entices the eye with its 19" RAYS[®] forged aluminum wheels, high down-force body, aggressive front and rear fascias, and rear diffuser.

RAYS[®] is a registered trademark of RAYS Engineering.



ALCANTARA®/LEATHER-WRAPPED STEERING WHEEL

NISMO® TACHOMETER

AVAILABLE NAVIGATION SYSTEM*

UNIQUE NISMO® INTERIOR ACCENTS

ALUMINUM-TRIMMED PEDALS

ALCANTARA®/LEATHER-APPOINTED RECARO® SEATS

NISSAN 370Z® NISMO®

Alcantara®-wrapped adrenaline. If you love to drive, there's no better place to be. 370Z® NISMO® embraces you with leather-appointed Recaro® seats with grippy Alcantara® inserts, while an Alcantara® and leather-wrapped steering wheel fits perfectly in your hand. No detail is overlooked, from the leather-wrapped band at 12 o'clock to the signature NISMO® red tachometer. Tasteful red stitching accentuates the personal feel of the cabin. There are even aluminum-trimmed pedals – so every part of you enjoys a singularly unique driving experience.



**AT ITS CORE,
THE HEART OF A LEGEND.**

As long as there has been Z,[®] there has been a soulful 6-cylinder leading the way. In this case, the 4th-generation of the legendary VQ V6 engine. With a 3.7-liter displacement for massive muscle, this 332-hp dynamo features advanced Variable Valve Event and Lift (VVEL) technology that continuously tunes valve lift and timing for quicker response and a broader torque curve, while optimizing fuel efficiency and reducing emissions. And while all this engineering may sound intriguing on paper, the exhilaration – on the straights or through the corners – is pure, pulse-pounding magic.

3.7^{LITER} V6 | **332**_{HP} | **270**^{LB-FT} TORQUE

NISSAN SYNCHROREV MATCH® INNOVATION THAT'S A MATCH MADE IN DRIVING HEAVEN.

What if you could have a perfectly matched shift every time? SynchroRev Match® gives you the shifting skills of a pro, for a smoother, controlled drive, from your favorite twisty road to your daily commute. It's one manual transmission so smooth, it would make an automatic jealous. Except maybe, the Z®'s exceptionally talented 7-speed automatic.



A world's first. Included on the Sport models, SynchroRev Match® technology – the first in any production car – monitors the 6-speed manual's clutch pedal, shift lever, and vehicle speed. As you shift to a lower gear, the system will “blip” the throttle to the ideal engine rpm for a supremely smooth downshift as you let out the clutch. The system also works when upshifting to give you a smooth flow of power when accelerating.



Control at your fingertips. Want effortless cruising? Put the 7-speed automatic transmission in “D.” For a quick gear change, just pull the steering column-mounted lightweight magnesium paddle shifters. In Manual mode, you get manual-style control with a nudge of the shift lever or a pull of the paddle shifters. The transmission can even hold a gear in cornering for better balance, or downshift before a corner for more effective braking. And when a downshift is needed, Downshift Rev Matching automatically opens the throttle to match the rpm for smoother gear changes.

MAY THE G-FORCE BE WITH YOU.

Designed to conquer every corner, the Nissan 370Z[®] starts with a low center of gravity and a short wheelbase for quick response. Structural supports under the hood and along the body reinforce the chassis to handle the loads the suspension can dish out. Bring it all together with an enthusiast's wish list of high-performance componentry, and at every turn of the wheel, find pure joy as the 370Z[®] elevates handling science into pure performance art.

Vehicle Dynamic Control. A great sports car shouldn't just exhilarate, it should also inspire confidence. Vehicle Dynamic Control¹ (VDC) on the 370Z[®] continuously monitors the speed of each wheel, steering angle, yaw, lateral G-forces and even braking pressure. It compares the data to the steered vehicle path and, if it senses the onset of plowing (understeer) or fishtailing (oversteer), VDC brakes individual wheels and/or reduces engine power to help keep you on your steered course.¹



Lightweight suspension components. The lighter a suspension's components, the more quickly it can react to the driver and bumps in the road. Use of strong yet lightweight aluminum makes the Z[®] suspension extremely responsive. Its double-wishbone front and 4-link rear design help to keep the tires vertical to the ground, maximizing their contact patches. Dual flow pass shocks enhance control. And super-light forged 19" alloy wheels are available for even quicker response.

4-piston brake calipers on 14" front rotors. Balance doesn't just apply to cornering. Available on 370Z[®] Sport and 370Z[®] NISMO[®] models are its largest brakes ever – 14" front rotors, with the gripping power of 4-piston front calipers. Purpose-designed ducting helps to reduce fade and provide predictable and precise stopping power.

¹VDC, which should remain on when driving except when freeing the vehicle from mud or snow, cannot prevent accidents due to abrupt steering, carelessness, or dangerous driving techniques. ²Static weight ratio is measured without a passenger in the car.

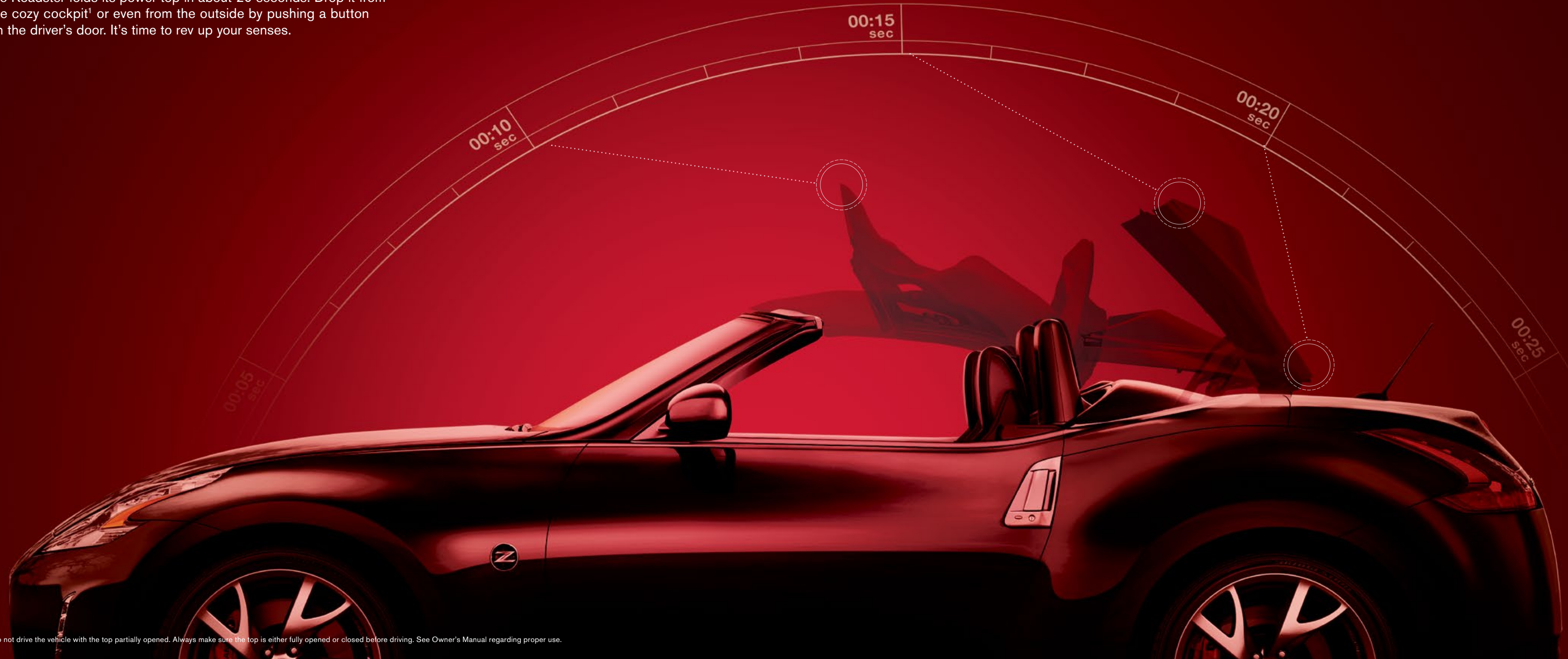


STATIC WEIGHT RATIO
55 | **45**
FRONT | REAR

Some consider a static 50/50 balance to be the perfect weight distribution for handling. But Nissan engineers realized that something closer to a 55 front/45 rear static ratio is actually ideal.² At the precise moment the driver accelerates out of a corner's apex, the weight distribution shifts rearward and becomes an approximate 50/50 balance. This translates into enhanced tire contact for better acceleration, quicker turns and a handling feel that's uniquely Z.[®]

THE FEELING OF UNLIMITED POSSIBILITIES.

Taste freedom as the breeze brushes your face. Hear the sound of 332 pure horsepower through a tuned exhaust. Embrace the sky as the Roadster folds its power top in about 20 seconds. Drop it from the cozy cockpit¹ or even from the outside by pushing a button on the driver's door. It's time to rev up your senses.



¹Do not drive the vehicle with the top partially opened. Always make sure the top is either fully opened or closed before driving. See Owner's Manual regarding proper use.



DESIGNED FOR EXTENDED PLAY.

Expanding the definition of “convertible weather.” The 370Z[®] Roadster is designed to let you enjoy top-down driving longer – whether it’s just later in the day, or later in the season.¹ Available heated and cooled seats help keep you comfortable even when there’s a chill in the air. Aerodynamic design helps minimize air buffeting in and around the cabin, for a quieter ride. And when it’s time to put up the top, a double-insulated roof helps keep the cabin warmer on cool days, and reduces interior noise, making this one roadster you’ll want to enjoy year-round.

¹Do not drive the vehicle with the top partially opened. Always make sure the top is either fully opened or closed before driving. See Owner’s Manual regarding proper use.



In a sports car, every detail has to be right. That's why you'll find the main gauges adjust with the steering column, to help make sure you have a clear view. The center console controls are located within easy reach, and are easily identifiable by touch. There's even a uniquely bolstered driver's seat for enhanced support, knee pads on both sides of the console, and anti-slip material on the seat cushion.

Nissan 370Z® Touring Coupe shown in Black Leather.



EVEN THE TECHNOLOGY IS DESIGNED TO PERFORM.

Knowledge is king. The available Nissan Hard Drive Navigation System helps steer you clear of traffic jams, thanks to NavTraffic® real-time traffic advisories.^{1,2} Hungry for more than just directions? NavWeather® service provided by SiriusXM® advises you of severe weather and potentially slippery roads that could affect your drive, as well as National Weather Service warnings and 3-day weather forecasts.^{1,2} And with the available RearView Monitor, shift into “Reverse” and you get a glimpse of what’s directly behind you on the navigation system’s large, 7-inch VGA screen.³



Active Noise Cancellation and Active Sound Enhancement. To elevate your drive in Coupe models, available Active Noise Cancellation helps remove unwanted powertrain noise in the cabin. Combined with available Active Sound Enhancement that helps smooth out and enhance the engine note in the cabin, you can savor the sound of the Z®’s legendary VQ V6 like never before.

Bose® audio system. And since even the most dedicated enthusiast might want to listen to something other than its spine-tingling dual-exhaust note, the 370Z® Coupe’s and Roadster’s available Bose® audio system was custom-engineered for the unique shape of the interior, helping to provide inspiring sound quality.

USB input. Plug your iPod® into the USB input and you can control its functions through the audio system or touch-screen monitor, plus get song readouts on the digital display.⁴ No iPod®? No problem. You can also play digital music files from a USB flash drive.⁴

SiriusXM® Satellite Radio. With 170 channels of news, sports, music, and more, there’s always something worth listening to. If your favorite artist is playing on one of those channels, the 370Z®’s audio system alerts you, and asks if you want to switch over.²

Bluetooth®. The Bluetooth® Hands-free Phone System lets you make and receive calls through the audio system. On 370Z® models with the available navigation system, you can even stream music from any compatible device via Bluetooth® wireless technology.^{1,5}



DESIGNED FOR THE REAL WORLD.

Seats contoured to hold you. The 370Z®'s driver seat shows how seriously we take every detail of driving. The upper seatback has cutaway areas to help your arms move freely for steering and shifting. To let you work the pedals more easily, the lower seat cushions also feature cutaways. Along with aggressive side bolsters, the seat also features anti-slip materials to help hold you in place as you round those corners.

A place for everything. While it's exhilarating to attack your favorite set of curves, a sports car also has to function in day-in, day-out driving. To help keep things orderly, the 370Z® features three cup holders, a lockable glove compartment, dash-mounted storage (not available with navigation), parcel shelves behind both seats and a handy parcel box behind the passenger seat.



Coupe cargo area. Plenty of open space for the important things in life – like sports gear. An available retractable cargo cover helps keep things out of sight!



Roadster trunk. A smartly designed convertible top means usable trunk space. Even with the top down, you can still fit a golf bag in the trunk!

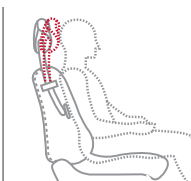


EVEN WHEN REALITY BITES.

High-performance protection. The Nissan Advanced Air Bag System includes dual-stage supplemental front air bags equipped with seat belt sensors and an occupant-classification sensor. These dual-stage air bags adjust their inflation rate, depending on the severity of impact and seat belt use. If the passenger seat is empty, a sensor actually deactivates that air bag. In addition, standard side-impact supplemental air bags are built into the seats, so they move with you as you adjust your seat. Standard curtain side-impact supplemental air bags (door-mounted on Roadster) help provide head impact protection for you and your passenger.²

6

AIR BAGS²



¹Cargo and load capacity limited by weight and distribution. Always secure all cargo. ²Air bags are only a supplemental restraint system; always wear your seat belt. Even with the occupant-classification sensor, rear-facing child restraints should not be placed in the front-passenger's seat. All children 12 and under should be properly secured in child restraints, booster seats, or seat belts according to their size. Air bags will only inflate in certain accidents. See your Owner's Manual for more details. Inflated air bags shown for illustration purposes only; actual coverage area may differ. Air bags deflate after deployment.



TAKE PART IN PUBLIC DISPLAYS OF AFFECTION.

GENUINE NISSAN ACCESSORIES.



Every Genuine Nissan Accessory is custom-fit, custom-designed and durability-tested. Each one is backed by Nissan's 3-year/36,000-mile (whichever occurs first) limited warranty (if installed by dealer at the time of purchase),¹ and can be financed when installed by dealer at time of purchase.

- A. Vehicle Cover**
Protects your Z[®] from dust and debris when parked outdoors.
- B. NISMO[®] Rear Decklid Spoiler**
To the winner go the spoilers.
- C. Carpeted Floor Mats**
Preserve and protect in style.
- D. NISMO[®] Shift Knobs**
Put legendary performance in the palm of your hand.
- E. Illuminated Kick Plates (2-piece set)**
A grand entry every time you get in.
- F. NISMO[®] Cat-back Exhaust System**
More horsepower, more torque, and more aggressive sound.

- G. NISMO[®] Spring, Shocks and Struts Kit**
Take your handling to the next level.
- H. Front Chin Aero Deflector**
Less turbulence. More downforce. Aggression with purpose.

Additional Accessories:

- Rear Decklid Spoiler
- Splash Guards
- NISMO[®] Suspension Kits
- NISMO[®] Brake Pads, Front and Rear
- NISMO[®] Carpeted Floor Mats
- Carpeted Trunk Mat²
- Portable Cargo Organizer²
- In-mirror RearView Monitor³ with HomeLink[®] and Compass
- And More



Click the button to see Genuine Nissan Accessories in action. Or go to bit.ly/z_gnavideos

For more information and to shop online for Z[®] Genuine Nissan Accessories, go to bit.ly/16z-estore

¹Genuine Nissan Accessories are covered by Nissan's Limited Warranty on Genuine Nissan Replacement Parts, Genuine NISMO[®] S-Tune Parts, and Genuine Nissan Accessories for the longer of 12 months/12,000 miles (whichever occurs first) or the remaining period under the 3-year/36,000-mile (whichever occurs first) Nissan New Vehicle Limited Warranty. Terms and conditions apply. See Warranty Information Booklet for details. ²Cargo and load capacity limited by weight and distribution. Always secure all cargo. ³Parking aid/convenience feature. Cannot completely eliminate blind spots. May not detect every object and does not warn of moving objects. Always check surroundings and turn to look behind you before moving vehicle. HomeLink[®] is a registered trademark of Gentex Corporation.

Nissan 370Z[®] Sport Coupe shown in Gun Metallic with Front Chin Aero Deflector (standard on Sport and Sport Tech trims), NISMO[®] Rear Decklid Spoiler, and NISMO[®] Graphics Kit. **Nissan 370Z[®] Touring Sport Roadster** shown in Magma Red with Front Chin Aero Deflector (standard on Touring Sport trim).

CHOOSE YOUR TRIM LEVEL

COUPE

370Z®

- 332 hp, 270 lb-ft of torque, 3.7-liter V6
- 6-speed manual transmission or 7-speed automatic transmission
- 18" Black-finish aluminum-alloy wheels
- Yokohama® ADVAN Sport® high-performance W-rated tires
- Sport-tuned suspension
- High Intensity Discharge (HID) bi-functional xenon headlights
- LED Daytime Running Lights
- Z® fender emblems
- Nissan Intelligent Key® with Push Button Ignition
- Bluetooth® Hands-free Phone System¹
- USB connection port for iPod® interface and other compatible devices²
- Six standard air bags



TOURING

INCLUDES 370Z® EQUIPMENT PLUS:

- Paddle shifters (AT only)
- Nissan Hard Drive Navigation System with touch-screen monitor and Voice Recognition³
- RearView Monitor⁴
- Streaming audio via Bluetooth® wireless technology¹
- Leather-appointed power heated seats with synthetic suede inserts
- Driver's adjustable lumbar support
- Bose® audio system with eight speakers, including two subwoofers
- Active Noise Cancellation (ANC)/Active Sound Enhancement (ASE)
- SiriusXM® Satellite Radio⁵
- Aluminum-trimmed pedals
- Auto-dimming rearview mirror
- HomeLink® Universal Transceiver
- LED illuminated Z® side marker emblems



SPORT

INCLUDES 370Z® EQUIPMENT PLUS:

- Paddle shifters (AT only)
- Nissan sport brakes – 14.0" 4-piston front brakes/13.8" 2-piston rear brakes
- SynchroRev Match® (manual transmission only)
- Viscous limited-slip differential
- 19" RAYS® forged alloy wheels
- Bose® audio system with eight speakers, including two subwoofers
- Active Noise Cancellation (ANC)/Active Sound Enhancement (ASE)
- Bridgestone® Potenza® RE050A high-performance W-rated tires
- Front chin aero deflector
- Body-color rear spoiler
- LED illuminated Z® side marker emblems



NISMO®

INCLUDES 370Z® EQUIPMENT PLUS:

- 350 hp, 276 lb-ft of torque, 3.7-liter V6
- 6-speed manual transmission with SynchroRev Match®
- Black Magnesium paddle shifters (AT only)
- Viscous limited-slip rear differential
- NISMO®-tuned free-flow dual exhaust with H-pipe configuration
- Nissan sport brakes – 14.0" 4-piston front brakes/13.8" 2-piston rear brakes
- High-rigidity brake hoses and R35 Special II brake fluid
- 19" NISMO® forged alloy wheels by RAYS®
- Bose® audio system with eight speakers, including two subwoofers
- Active Noise Cancellation (ANC)/Active Sound Enhancement (ASE)
- Bridgestone® Potenza® S001 high-performance Y-rated tires
- NISMO®-tuned suspension
- NISMO® reinforced front strut tower brace
- NISMO® performance body dampers
- NISMO® aerodynamic body design
- NISMO® Recaro® leather-appointed seats with Alcantara® inserts
- NISMO® Alcantara®/leather-wrapped steering wheel
- Signature NISMO® interior trim



SPORT TECH

INCLUDES 370Z® SPORT EQUIPMENT PLUS:

- Nissan Hard Drive Navigation System with touch-screen monitor and Voice Recognition³
- RearView Monitor⁴
- SiriusXM® Satellite Radio⁵
- Streaming audio via Bluetooth® wireless technology¹
- Auto-dimming rearview mirror
- HomeLink® Universal Transceiver



NISMO® TECH

INCLUDES 370Z® NISMO® EQUIPMENT PLUS:

- Nissan Hard Drive Navigation System with touch-screen monitor and Voice Recognition³
- RearView Monitor⁴
- SiriusXM® Satellite Radio⁵
- Streaming audio via Bluetooth® wireless technology¹
- Auto-dimming rearview mirror
- HomeLink® Universal Transceiver



¹Availability of specific features is dependent upon the phone's Bluetooth® support. Please refer to your phone Owner's Manual for details. Bluetooth® word mark and logos are owned by Bluetooth® SIG, Inc., and any use of such marks by Nissan is under license. ²Driving is serious business and requires your full attention. If you have to use the connected device while driving, exercise extreme caution at all times so full attention may be given to vehicle operation. iPod® is a registered trademark of Apple, Inc. All rights reserved. iPod® not included. ³Never program while driving. GPS mapping may not be detailed in all areas or reflect current road status. ⁴Parking aid/convenience feature. Cannot completely eliminate blind spots. May not detect every object and does not warn of moving objects. Always check surroundings and turn to look behind you before moving vehicle. ⁵Required SiriusXM® Satellite Radio, NavTraffic® and NavWeather® subscriptions sold separately after trial period. Installation costs, one-time activation fee, other fees and taxes will apply. NavTraffic® available in select markets. Services available only to those 18 or older in the 48 contiguous states and D.C. Fees and programming subject to change. Subscriptions governed by Customer Agreement available at siriusxm.com. ©2015 Sirius XM Radio Inc. Sirius® XM® and all related marks and logos are trademarks of Sirius XM Radio Inc. Alcantara® is a registered trademark of Alcantara S.p.A. Corporation. Bose® is a registered trademark of The Bose Corporation. Bridgestone® and Potenza® are registered trademarks of Bridgestone Corporation. HomeLink® is a registered trademark of Gentex Corporation. RAYS® is a registered trademark of RAYS Engineering. Recaro® is a registered trademark of Recaro North America Inc. Yokohama® and ADVAN Sport® are registered trademarks of The Yokohama Tire Corporation.

CHOOSE YOUR TRIM LEVEL

ROADSTER

370Z®

- 332 hp, 270 lb-ft of torque, 3.7-liter V6
- 7-speed automatic transmission with paddle shifters
- 18" Black-finish aluminum-alloy wheels
- Yokohama® ADVAN Sport® high-performance W-rated tires
- Power convertible soft-top with glass window
- Rear glass wind deflector
- Power moving tonneau cover¹
- High Intensity Discharge (HID) bi-functional xenon headlights
- LED Daytime Running Lights
- LED illuminated Z® side marker emblems
- Nissan Intelligent Key® with Push Button Ignition
- Bluetooth® Hands-free Phone System²
- USB connection port for iPod® interface and other compatible devices³
- Six standard air bags



TOURING SPORT

INCLUDES 370Z® TOURING EQUIPMENT PLUS:

- Standard 6-speed close-ratio manual transmission or available 7-speed automatic transmission with paddle shifters
- Nissan sport brakes – 14.0" 4-piston front brakes/13.8" 2-piston rear brakes
- SynchroRev Match® (manual transmission only)
- Viscous limited-slip differential
- 19" RAYS® forged alloy wheels
- Bridgestone® Potenza® RE050A high-performance W-rated tires



TOURING

INCLUDES 370Z® ROADSTER EQUIPMENT PLUS:

- Standard 6-speed close-ratio manual transmission or available 7-speed automatic transmission with paddle shifters
- Nissan Hard Drive Navigation System with touch-screen monitor and Voice Recognition
- RearView Monitor
- Streaming audio via Bluetooth® wireless technology²
- Ventilated leather-appointed power heated and cooling seats
- Driver's adjustable lumbar support
- Bose® audio system with eight speakers, including two subwoofers
- SiriusXM® Satellite Radio⁴
- Aluminum-trimmed pedals
- Auto-dimming rearview mirror
- HomeLink® Universal Transceiver

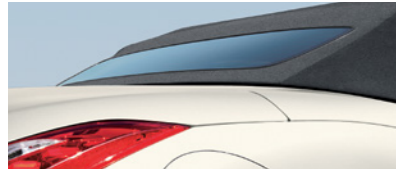


¹The Hard Tonneau Cover is not completely water-tight. Do not store items under the Hard Tonneau Cover that may be damaged by water. Remove ice, snow, and standing water before opening panels. ²Availability of specific features is dependent upon the phone's Bluetooth® support. Please refer to your phone Owner's Manual for details. Bluetooth® word mark and logos are owned by Bluetooth SIG, Inc., and any use of such marks by Nissan is under license. ³Driving is serious business and requires your full attention. If you have to use the connected device while driving, exercise extreme caution at all times so full attention may be given to vehicle operation. iPod® is a registered trademark of Apple, Inc. All rights reserved. iPod® not included. ⁴Required SiriusXM® Satellite Radio, NavTraffic® and NavWeather® subscriptions sold separately after trial period. Installation costs, one-time activation fee, other fees and taxes will apply. NavTraffic® available in select markets. Services available only to those 18 or older in the 48 contiguous states and D.C. Fees and programming subject to change. Subscriptions governed by Customer Agreement available at siriusxm.com. ©2015 Sirius XM Radio Inc. Sirius®, XM® and all related marks and logos are trademarks of Sirius XM Radio Inc. The Bluetooth® word mark and logos are owned by Bluetooth SIG, Inc., and any use of such marks by Nissan is under license. Bose® is a registered trademark of The Bose Corporation. Bridgestone® and Potenza® are registered trademarks of Bridgestone Corporation. HomeLink® is a registered trademark of Gentex Corporation. RAYS® is a registered trademark of RAYS Engineering.

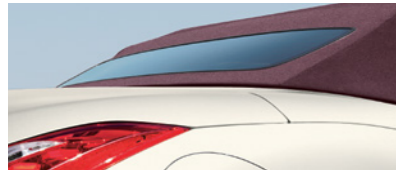
CHOOSE YOUR COLOR



You've decided which 370Z[®] you want, now here comes the best part: deciding what it's going to look like. Choose your favorite color and then pick from the available interiors based on the model of your choice.



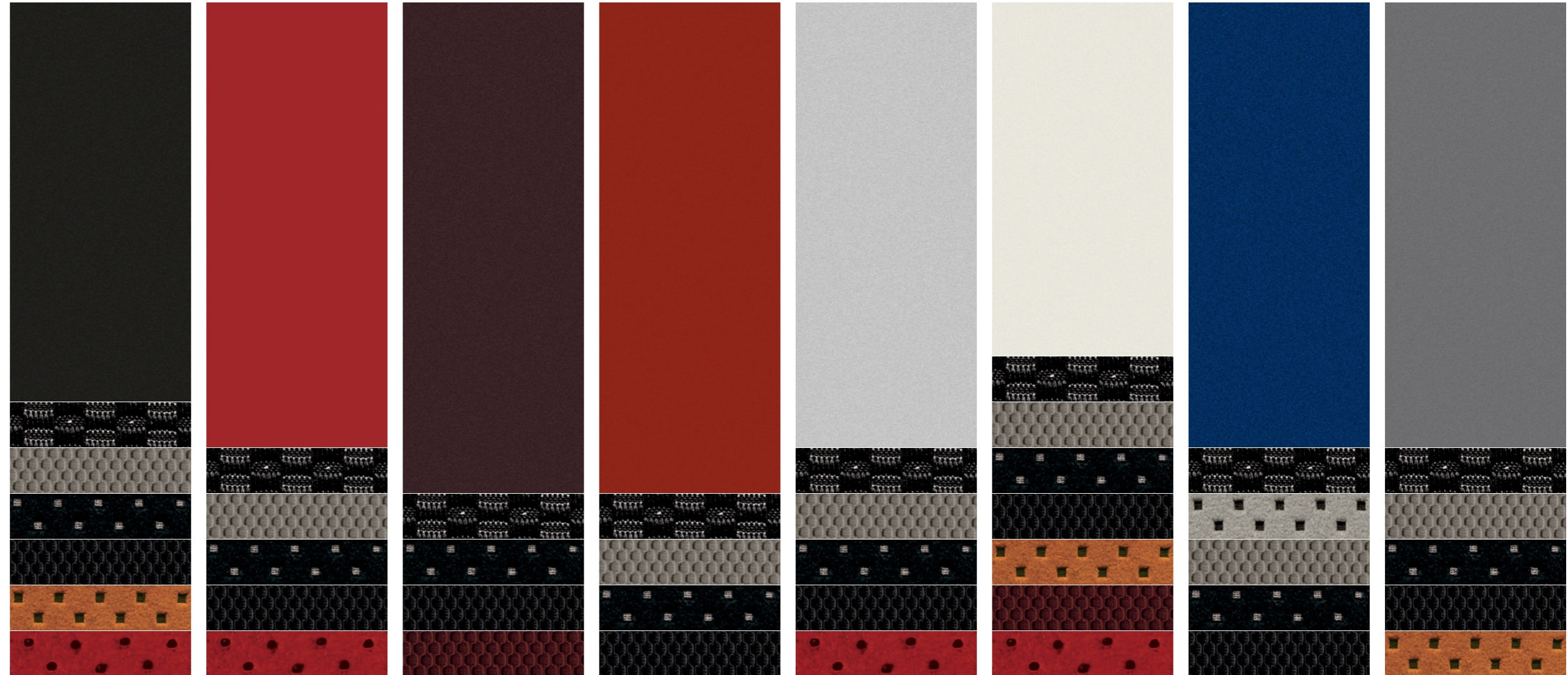
Black Top available with Black Cloth, Gray Leather or Black Leather



Bordeaux Top available with Wine Leather

■ **Standard**

Nissan has taken care to ensure that the digital color swatches presented here are the closest possible representation of actual vehicle colors. Swatches may vary slightly due to viewing light or screen quality. Please see the actual vehicle and colors at your local Nissan dealer.

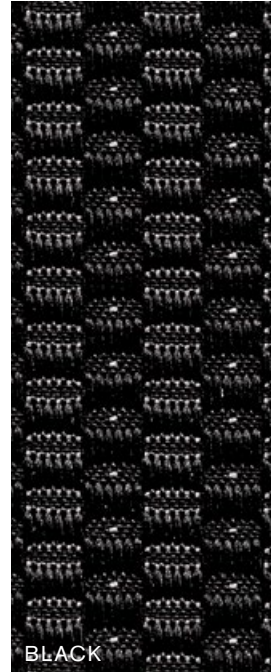


	Magnetic Black G41				Solid Red A54				Black Cherry NAG				Magma Red NAM				Brilliant Silver K23				Pearl White ³ QAB				Deep Blue Pearl RAY				Gun Metallic KAD			
	370Z [®]	SPORT	TOUR	NISMO [®]	370Z [®]	SPORT	TOUR	NISMO [®]	370Z [®]	SPORT	TOUR	NISMO [®]	370Z [®]	SPORT	TOUR	NISMO [®]	370Z [®]	SPORT	TOUR	NISMO [®]	370Z [®]	SPORT	TOUR	NISMO [®]	370Z [®]	SPORT	TOUR	NISMO [®]				
BLACK CLOTH	■				■				■				■				■				■				■							
GRAY LEATHER																																
BLACK LEATHER				■ ¹				■ ¹				■ ¹								■ ¹								■ ¹				
PERSIMMON LEATHER				■				■				■								■								■				
WINE LEATHER				■ ²				■ ²				■ ²								■ ²								■ ²				
NISMO [®] BLACK LEATHER/ RED ALCANTARA [®] INSERTS																												■				

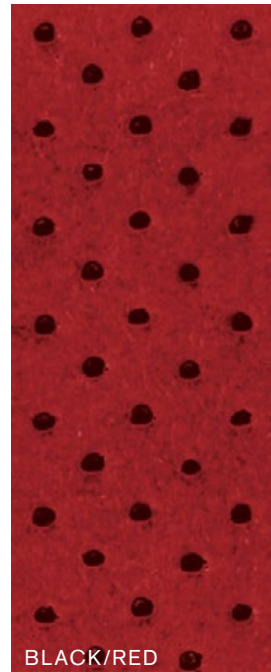
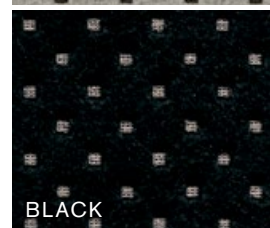
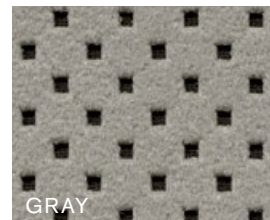
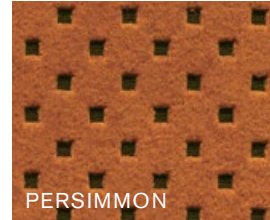
¹Roadster only. ²Coupe only. ³Extra cost option.

CHOOSE YOUR FABRIC

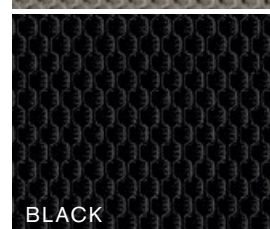
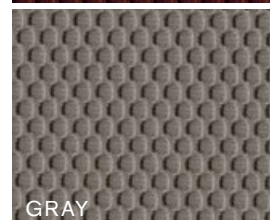
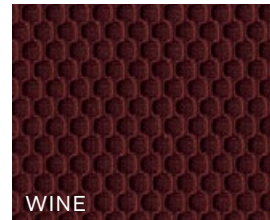
CLOTH (COUPE/ROADSTER)



LEATHER (COUPE)



NISMO® BLACK LEATHER/RED ALCANTARA® INSERTS (COUPE)



LEATHER (ROADSTER)

SPECIFICATIONS – COUPE

Engine	370Z*	Sport	Sport Tech	Touring	NISMO*	NISMO* Tech
VQ37VHR – 3.7-liter DOHC 24-valve V6 aluminum-alloy engine ¹	■	■	■	■	■	■
Horsepower – 332 hp @ 7,000 rpm	■	■	■	■		
350 hp @ 7,400 rpm					■	■
Torque – 270 lb-ft @ 5,200 rpm	■	■	■	■		
276 lb-ft @ 5,200 rpm					■	■
Bore x stroke – 95.5 x 86.0 mm	■	■	■	■	■	■
Compression ratio – 11:1	■	■	■	■	■	■
Maximum engine speed – 7,500 rpm	■	■	■	■	■	■
Emissions – Tier2-Bin5 (Fed); LEV2-ULEV (CA)	■	■	■	■	■	■
Continuously Variable Valve Timing Control System (CVTCS) with Variable Valve Event and Lift (VVEL) on intake valves	■	■	■	■	■	■
Twin-intake system	■	■	■	■	■	■
Nissan Direct Ignition System with iridium-tipped spark plugs	■	■	■	■	■	■
Electronic drive-by-wire throttle	■	■	■	■	■	■
NISMO®-tuned free-flow dual exhaust with H-pipe configuration					■	■

Drivetrain	370Z*	Sport	Sport Tech	Touring	NISMO*	NISMO* Tech
Longitudinally mid-mounted front engine/Rear-Wheel Drive	■	■	■	■	■	■
Carbon-fiber composite driveshaft	■	■	■	■	■	■
6-speed close-ratio manual transmission	■	■	■	■	■	■
SynchroRev Match® (manual transmission)		■	■		■	■
7-speed automatic transmission with manual shift mode and Downshift Rev Matching	<input type="checkbox"/>	<input type="checkbox"/>	<input type="checkbox"/>	<input type="checkbox"/>	<input type="checkbox"/>	<input type="checkbox"/>
Paddle shifters		<input type="checkbox"/>	<input type="checkbox"/>	<input type="checkbox"/>	<input type="checkbox"/>	<input type="checkbox"/>
Viscous limited-slip rear differential		■	■		■	■

Brakes	370Z*	Sport	Sport Tech	Touring	NISMO*	NISMO* Tech
12.6" x 1.10" vented front discs and 12.6" x 0.63" vented rear discs	■			■		
Nissan sport brakes – 4-piston opposed aluminum calipers with 14.0" x 1.30" vented front discs and 2-piston opposed aluminum calipers with 13.8" x 0.80" vented rear discs		■	■		■	■

■ Standard Optional

Brakes (continued)	370Z*	Sport	Sport Tech	Touring	NISMO*	NISMO* Tech
High-rigidity brake hoses and R35 Special II brake fluid					■	■
4-wheel Anti-lock Braking System (ABS)	■	■	■	■	■	■
Electronic Brake force Distribution (EBD)	■	■	■	■	■	■
Brake Assist	■	■	■	■	■	■

Suspension/Chassis Bracing/Steering	370Z*	Sport	Sport Tech	Touring	NISMO*	NISMO* Tech
2-link double-wishbone aluminum-alloy front suspension with aluminum subframe	■	■	■	■	■	■
4-link aluminum-alloy rear suspension	■	■	■	■	■	■
Front and rear stabilizer bars	■	■	■	■	■	■
NISMO®-tuned suspension with increased spring, dampening, and stabilizer rates					■	■
Ripple-control shock absorbers	■	■	■	■		
Sport-tuned shock absorbers	■	■	■	■		
3-point front strut tower brace	■	■	■	■		
NISMO® reinforced 3-point front strut tower brace					■	■
Rear underbody V-brace	■	■	■	■	■	■
NISMO® front and rear performance body dampers					■	■
Vehicle-speed-sensitive power steering	■	■	■	■	■	■

Wheels/Tires	370Z*	Sport	Sport Tech	Touring	NISMO*	NISMO* Tech
18" x 8.0" (front)/18" x 9.0" (rear) black-finish aluminum-alloy wheels	■			■		
19" x 9.0" (front)/19" x 10.0" forged alloy wheels by RAYS®		■	■			
19" x 9.5" (front)/19" x 10.5" (rear) NISMO® forged alloy wheels by RAYS®					■	■
225/50WR18 (front) and 245/45WR18 (rear) Yokohama® ADVAN Sport® high-performance tires	■			■		
245/40WR19 (front) and 275/35WR19 (rear) Bridgestone® Potenza® RE050A high-performance tires		■	■			
245/40YR19 (front) and 285/35YR19 (rear) Bridgestone® Potenza® S001 high-performance tires					■	■
Temporary spare tire	■	■	■	■	■	■

Exterior Features	370Z*	Sport	Sport Tech	Touring	NISMO*	NISMO* Tech
Automatic on/off headlights	■	■	■	■	■	■
High Intensity Discharge (HID) bi-functional xenon headlights	■	■	■	■	■	■
LED Daytime Running Lights	■	■	■	■	■	■
LED taillights	■	■	■	■	■	■
Z® fender emblems	■					
LED illuminated Z® side marker emblems		■	■	■	■	■
Front chin aero deflector		■	■			
Body-color rear spoiler		■	■			
NISMO® aerodynamic body design – front and rear fascia, spoiler side sills and rear spoiler					■	■
Aluminum hood, doors and hatch	■	■	■	■	■	■
Body-color dual power outside mirrors	■					
Body-color dual power heated outside mirrors		■	■	■	■	■
UV-reducing solar glass	■	■	■	■	■	■
Rear window defroster	■	■	■	■	■	■

Comfort/Convenience	370Z*	Sport	Sport Tech	Touring	NISMO*	NISMO* Tech
Nissan Hard Drive Navigation System with 7" VGA touch-screen monitor and voice recognition			■	■		■
NavTraffic® and NavWeather® provided by SiriusXM ²			■	■		■
RearView Monitor			■	■		■
Automatic Temperature Control (ATC) with in-cabin microfilter	■	■	■	■	■	■
Bluetooth® Hands-free Phone System ³	■	■	■	■	■	■
3-bay gauge cluster (oil temperature, voltmeter and digital clock)	■	■	■	■	■	■
Fine Vision electroluminescent gauges with multi-function drive computer	■	■	■	■	■	■
Upshift indicator light	■	■	■	■	■	■
NISMO® tachometer					■	■
Power windows with one-touch auto-up/down feature	■	■	■	■	■	■
Power door locks with auto-locking feature	■	■	■	■	■	■
Nissan Intelligent Key® with Push Button Ignition	■	■	■	■	■	■
Active Noise Control (ANC)/Active Sound Enhancement (ASE)		■	■	■	■	■
Remote windows down		■	■	■	■	■
Key-operated windows up/down	■	■	■	■	■	■

¹Premium fuel required. ²Required SiriusXM® Satellite Radio, NavTraffic® and NavWeather® subscriptions sold separately after trial period. Installation costs, one-time activation fee, other fees and taxes will apply. NavTraffic® available in select markets. Services available only to those 18 or older in the 48 contiguous states and D.C. Fees and programming subject to change. Subscriptions governed by Customer Agreement available at siriusxm.com. © 2014 Sirius XM Radio Inc. Sirius®, XM® and all related marks and logos are trademarks of Sirius XM Radio Inc. ³Availability of specific features is dependent upon the phone's Bluetooth® support. Please refer to your phone Owner's Manual for details. Bluetooth® word mark and logos are owned by Bluetooth SIG, Inc., and any use of such marks by Nissan is under license. Alcantara® is a registered trademark of Alcantara S.p.A. Corporation. Bridgestone® and Potenza® are registered trademarks of Bridgestone Corporation. HomeLink® is a registered trademark of Genetex Corporation. iPod® is a registered trademark of Apple, Inc. All rights reserved. iPod® not included. RAYS® is a registered trademark of RAYS Engineering. Recaro® is a registered trademark of Recaro North America Inc.. Yokohama® and ADVAN Sport® are registered trademarks of The Yokohama Tire Corporation.

SPECIFICATIONS – COUPE (CONTINUED)

Comfort/Convenience (continued)	370Z*	Sport	Sport Tech	Touring	NISMO*	NISMO* Tech
Illuminated steering wheel-mounted cruise control	■	■	■	■	■	■
HomeLink® Universal Transceiver			■	■		■
12-volt DC power outlets (two) and map lights	■	■	■	■	■	■
Tilt steering column with integrated gauges	■	■	■	■	■	■
Variable intermittent flat-blade windshield wipers	■	■	■	■	■	■
Auto-dimming rearview mirror			■	■		■
Sun visor with illuminated visor vanity mirrors and extensions	■	■	■	■	■	■
Cup holders (three) and lockable glove compartment	■	■	■	■	■	■
Dash-mounted storage	■	■			■	
Parcel box (behind passenger seat)	■	■	■	■	■	■
Parcel shelves (behind seats)	■	■	■	■	■	■
Rear cargo cover				■		

Seating/Appointments	370Z*	Sport	Sport Tech	Touring	NISMO*	NISMO* Tech
8-way adjustable driver's seat	■	■	■	■	■	■
Driver-shaped bucket seat with thigh support	■	■	■	■	■	■
Driver's adjustable lumbar support				■		
4-way adjustable passenger's bucket seat	■	■	■	■	■	■
Power heated seats				■		
Driver and passenger knee support	■	■	■	■	■	■
Cloth seat trim	■	■	■			
Leather-appointed sport seats with synthetic suede inserts				■		
NISMO® Recaro® leather-appointed seats with Alcantara® inserts					■	■
Synthetic suede door panel inserts				■		
Leather-wrapped steering wheel and shift knob	■	■	■	■		
NISMO® Alcantara®/leather-wrapped steering wheel and smooth leather-wrapped shift knob					■	■
Leather-wrapped parking brake lever	■	■	■	■	■	■
Aluminum-trimmed pedals				■	■	■
NISMO® signature red interior stitching					■	■
AM/FM/CD audio system	■	■			■	

Audio/Entertainment	370Z*	Sport	Sport Tech	Touring	NISMO*	NISMO* Tech
Four speakers	■					
Bose® audio system with eight speakers, including two subwoofers		■	■	■	■	■
MP3/WMA CD playback capability	■	■	■	■	■	■
DVD video playback capability			■	■		■
Auxiliary audio input jack	■	■			■	
Auxiliary audio/video input jacks			■	■		■
USB connection port for iPod® interface and other compatible devices	■	■	■	■	■	■
Streaming audio via Bluetooth® wireless technology ³			■	■		■
SiriusXM® Satellite Radio ²			■	■		■
Speed-sensitive volume control			■	■		■
Illuminated steering wheel-mounted audio controls	■	■	■	■	■	■

Safety/Security	370Z*	Sport	Sport Tech	Touring	NISMO*	NISMO* Tech
Nissan Advanced Air Bag System with dual-stage supplemental front air bags with seat belt and classification sensors	■	■	■	■	■	■
Driver and passenger seat-mounted side-impact supplemental air bags	■	■	■	■	■	■
Roof-mounted curtain side-impact supplemental air bags for occupants head protection	■	■	■	■	■	■
Vehicle Dynamic Control (VDC) with Traction Control System (TCS)	■	■	■	■	■	■
Seat belts with pretensioners and load limiters (3-point ALR/ELR passenger seat belt system – ELR for driver)	■	■	■	■	■	■
Active Head Restraints	■	■	■	■	■	■
Energy-absorbing steering column	■	■	■	■	■	■
Zone Body construction with front and rear crumple zones	■	■	■	■	■	■
Hood-buckling creases	■	■	■	■	■	■
Aluminum side-door guard beams	■	■	■	■	■	■
Tire Pressure Monitoring System (TPMS)	■	■	■	■	■	■
Nissan Vehicle Immobilizer System	■	■	■	■	■	■
Vehicle Security System (VSS)	■	■	■	■	■	■

SPECIFICATIONS – ROADSTER

Engine	370Z*	Touring	Touring Sport
VQ37VHR – 3.7-liter DOHC 24-valve V6 aluminum-alloy engine ¹	■	■	■
Horsepower – 332 hp @ 7,000 rpm	■	■	■
Torque – 270 lb-ft @ 5,200 rpm	■	■	■
Bore x stroke – 95.5 x 86.0 mm	■	■	■
Compression ratio – 11:1	■	■	■
Maximum engine speed – 7,500 rpm	■	■	■
Emissions – Tier2-Bin5 (Fed); LEV2-ULEV (CA)	■	■	■
Continuously Variable Valve Timing Control System (CVTCS) with Variable Valve Event and Lift (VVEL) on intake valves	■	■	■
Twin-intake system	■	■	■
Nissan Direct Ignition System with iridium-tipped spark plugs	■	■	■
Electronic drive-by-wire throttle	■	■	■

Drivetrain			
Longitudinally mid-mounted front engine/Rear-Wheel Drive	■	■	■
Carbon-fiber composite driveshaft	■	■	■
6-speed close-ratio manual transmission		■	■
SynchroRev Match® (manual transmission)			■
7-speed automatic transmission with manual shift mode and Downshift Rev Matching	■	□	□
Paddle shifters	■	□	□
Viscous limited-slip rear differential			■

Brakes			
12.6" x 1.10" vented front discs and 12.6" x 0.63" vented rear discs	■	■	
Nissan sport brakes – 4-piston opposed aluminum calipers with 14.0" x 1.30" vented front discs and 2-piston opposed aluminum calipers with 13.8" x 0.80" vented rear discs			■
4-wheel Anti-lock Braking System (ABS)	■	■	■
Electronic Brake force Distribution (EBD)	■	■	■
Brake Assist	■	■	■

■ Standard □ Optional

Suspension/Chassis Bracing/Steering	370Z*	Touring	Touring Sport
2-link double-wishbone aluminum-alloy front suspension with aluminum subframe	■	■	■
4-link aluminum-alloy rear suspension	■	■	■
Front and rear stabilizer bars	■	■	■
Ripple-control shock absorbers	■	■	■
Sport-tuned shock absorbers	■	■	■
3-point front strut tower brace	■	■	■
Rear underbody V-brace	■	■	■
Vehicle-speed-sensitive power steering	■	■	■

Wheels/Tires			
18" x 8.0" (front)/18" x 9.0" (rear) black-finish aluminum-alloy wheels	■	■	
19" x 9.0" (front)/19" x 10.0" forged alloy wheels by RAYS®			■
225/50WR18 (front) and 245/45WR18 (rear) Yokohama® ADVAN Sport® high-performance tires	■	■	
245/40WR19 (front) and 275/35WR19 (rear) Bridgestone® Potenza® RE050A high-performance tires			■
Temporary spare tire	□	□	□

Exterior Features			
Automatic on/off headlights	■	■	■
High Intensity Discharge (HID) bi-functional xenon headlights	■	■	■
LED Daytime Running Lights	■	■	■
LED taillights	■	■	■
LED illuminated Z® side marker emblems	■	■	■
Aluminum hood, doors and trunk	■	■	■
Body-color dual power heated outside mirrors	■	■	■
UV-reducing solar glass	■	■	■
Rear window defroster	■	■	■
Power convertible soft-top with glass window	■	■	■
Rear wind deflector and power moving tonneau cover	■	■	■

Comfort/Convenience	370Z*	Touring	Touring Sport
Nissan Hard Drive Navigation System with 7" VGA touch-screen monitor and voice recognition		■	■
NavTraffic® ² and NavWeather® ² provided by SiriusXM ²		■	■
RearView Monitor		■	■
Automatic Temperature Control (ATC) with in-cabin microfilter	■	■	■
Bluetooth® Hands-free Phone System ³	■	■	■
3-bay gauge cluster (oil temperature, voltmeter and digital clock)	■	■	■
Fine Vision electroluminescent gauges with multi-function drive computer	■	■	■
Upshift indicator light	■	■	■
Power windows with one-touch auto-up/down feature	■	■	■
Power door locks with auto-locking feature	■	■	■
Nissan Intelligent Key® with Push Button Ignition	■	■	■
Remote windows down	■	■	■
Key-operated windows up/down	■	■	■
Illuminated steering wheel-mounted cruise control	■	■	■
HomeLink® Universal Transceiver		■	■
12-volt DC power outlets (two) and map lights	■	■	■
Tilt steering column with integrated gauges	■	■	■
Variable intermittent flat-blade windshield wipers	■	■	■
Auto-dimming rearview mirror		■	■
Sun visor with illuminated visor vanity mirrors	■	■	■
Cup holders (three) and lockable glove compartment	■	■	■
Dash-mounted storage	■		
Parcel box (behind passenger seat)	■	■	■
Parcel shelves (behind seats)	■	■	■

Seating/Appointments			
8-way adjustable driver's seat	■	■	■
Driver-shaped bucket seat with thigh support	■	■	■
Driver's adjustable lumbar support		■	■
4-way adjustable passenger's bucket seat	■	■	■
Power seats		■	■
Climate-controlled seats (heated and cooled)		■	■

¹Premium fuel required. ²Required SiriusXM® Satellite Radio, NavTraffic® and NavWeather® subscriptions sold separately after trial period. Installation costs, one-time activation fee, other fees and taxes will apply. NavTraffic® available in select markets. Services available only to those 18 or older in the 48 contiguous states and D.C. Fees and programming subject to change. Subscriptions governed by Customer Agreement available at siriusxm.com. ©2015 Sirius XM Radio Inc. Sirius, XM and all related marks and logos are trademarks of Sirius XM Radio Inc. ³Availability of specific features is dependent upon the phone's Bluetooth® support. Please refer to your phone Owner's Manual for details. Bluetooth® word mark and logos are owned by Bluetooth® SIG, Inc., and any use of such marks by Nissan is under license. Alcantara® is a registered trademark of Alcantara S.p.A. Corporation. Bose® is a registered trademark of The Bose Corporation. Bridgestone® and Potenza® are registered trademarks of Bridgestone Corporation. HomeLink® is a registered trademark of Gentex Corporation. iPod® is a registered trademark of Apple, Inc. All rights reserved. iPod® not included. RAYS® is a registered trademark of RAYS Engineering. iPod not included. Yokohama® and ADVAN Sport® are registered trademarks of The Yokohama Tire Corporation.

SPECIFICATIONS – ROADSTER (CONTINUED)

Seating/Appointments (continued)	370Z*	Touring	Touring Sport
Driver and passenger knee support	■	■	■
Cloth seat trim	■		
Ventilated leather-appointed sport seats		■	■
Synthetic suede door panel inserts		■	■
Leather-wrapped steering wheel and shift knob	■	■	■
Leather-wrapped parking brake lever	■	■	■
Aluminum-trimmed pedals		■	■

Audio/Entertainment			
AM/FM/CD audio system	■		
Four speakers	■		
Bose® audio system with eight speakers, including two subwoofers		■	■
MP3/WMA CD playback capability	■	■	■
DVD video playback capability		■	■
Auxiliary audio input jack	■		
Auxiliary audio/video input jacks		■	■
USB connection port for iPod® interface and other compatible devices	■	■	■
Streaming audio via Bluetooth® wireless technology ³		■	■
SiriusXM® Satellite Radio ¹		■	■
Speed-sensitive volume control		■	■
Illuminated steering wheel-mounted audio controls	■	■	■

Safety/Security			
Nissan Advanced Air Bag System with dual-stage supplemental front air bags with seat belt and classification sensors	■	■	■
Driver and passenger seat-mounted side-impact supplemental air bags	■	■	■
Door-mounted curtain side-impact supplemental air bags for occupants head protection	■	■	■
Vehicle Dynamic Control (VDC) with Traction Control System (TCS)	■	■	■
Seat belts with pretensioners and load limiters (3-point ALR/ELR passenger seat belt system – ELR for driver)	■	■	■
Active Head Restraints	■	■	■
Energy-absorbing steering column	■	■	■
Zone Body construction with front and rear crumple zones	■	■	■

Safety/Security (continued)	370Z*	Touring	Touring Sport
Hood-buckling creases	■	■	■
Aluminum side-door guard beams	■	■	■
Tire Pressure Monitoring System (TPMS)	■	■	■
Nissan Vehicle Immobilizer System	■	■	■
Vehicle Security System (VSS)	■	■	■

DIMENSIONS/CAPACITIES/WEIGHTS/MPG

Dimensions – Inches

Exterior	
Wheelbase	100.4
Overall length	167.5 (170.5 NISMO®)
Overall width	72.6 (73.6 NISMO®)
Overall height	51.8 (up to 52.2 on Roadster)
Track width (front/rear)	
18" Aluminum-alloy wheels	61.0/62.8
19" RAYS® forged wheels	60.6/61.6
19" NISMO®/RAYS® forged wheels	61.2/62.2

Aerodynamics – Cd

Drag coefficient	.30 on Coupe and NISMO; .29 for Sport model .33 on Roadster; .34 for Sport model
------------------	---

Interior

Head room	38.2 (38.7 on Roadster)
Leg room	42.9
Hip room	54.6
Shoulder room	54.4

Capacities

Seating capacity	2
Interior volume (cu. ft.)	51.6 (52.3 on Roadster)
Cargo volume (cu. ft.)	6.9 (4.2 on Roadster)
Fuel tank (gals.)	19.0

Curb Weights – Lbs.

Coupe	370Z®	Sport	Sport Tech	Touring	NISMO®	NISMO® Tech
Manual transmission	3,292	3,344	3,353	3,338	3,389	3,398
Automatic transmission	3,333	3,386	3,395	3,373	3,431	3,440

Roadster

	370Z®	Touring	Touring Sport
Manual transmission	–	3,481	3,521
Automatic transmission	3,463	3,503	3,543

2016 EPA Fuel Economy Estimates

City/Hwy/Combined MPG	Coupe	Roadster
Manual transmission	18/26/21	17/24/20
Automatic transmission	19/26/21	18/25/21

— Actual mileage may vary with driving conditions – use for comparison only.

BUYING/OWNING



Nissan Motor Acceptance Corporation. Whether you're buying or leasing, you'll find attractive rates and flexible terms to make your purchase more accessible.

College Grad Program. Ask about our special new vehicle pricing available to individuals up to two years after graduation.

Active and Reserve US Military Program. Ask about eligibility for our fixed discount on new vehicle pricing available to those serving our country.

New Vehicle Limited Warranties. Protection for your new Nissan includes 3-year/36,000-mile (whichever occurs first) basic coverage and 5-year/60,000-mile (whichever occurs first) powertrain coverage. Terms, conditions and exclusions apply. See Warranty Information Booklet for complete details.

Security+Plus® For additional peace of mind, a variety of extended service plans lets you tailor the coverage to your driving habits.

Maintenance+Plus® This extended plan ensures your Nissan will receive up to 17 different services and over 33 different inspection items at each visit, using the most up-to-date diagnostic equipment available.

Genuine Nissan Parts. When it comes time for service, any necessary replacement parts will be made using Genuine Nissan new or remanufactured parts, or Nissan-approved parts. And they're the only parts to carry Nissan's factory-backed limited warranty.

Nissan Mobility Assist. This program offers reimbursements toward the purchase and installation of certain mobility assistance products for program-eligible Nissans. Go to NissanUSA.com/mobility for more info.

Nissan's environmental action plan focuses on several key areas. Increasing production of Zero Emission vehicles, including the 100% electric LEAF.® Improving fuel efficiency through our PUREDRIVE™ measures. And reducing the environmental impact of manufacturing, as seen at our energy-efficient, low-emissions paint plant in Tennessee. For more information, log on to NissanUSA.com/green



Follow us:  @NissanSupport

At NissanUSA.com, you'll find virtual product demonstrations, a way to "build your own Nissan," a dealer locator, and more information about key Nissan support services. Or if you'd prefer, call **1-800-NISSAN-3** for answers to specific questions about 370Z® or any other Nissan vehicle. The Nissan names, logos, product names, feature names, and slogans are trademarks owned by or licensed to Nissan Motor Co. Ltd. and/or its North American subsidiaries. Other trademarks and trade names are those of their respective owners. **Always wear your seat belt, and please don't drink and drive.** ©2015 Nissan North America, Inc.

This brochure is intended for general descriptive and informational purposes only. It is subject to change and does not constitute an offer, representation or warranty (express or implied) by Nissan North America, Inc. Interested parties should confirm the accuracy of any information in this brochure as it relates to a vehicle directly with Nissan North America, Inc., before relying on it to make a purchase decision. Nissan North America, Inc., reserves the right to make changes, at any time, without prior notice, in prices, colors, materials, equipment, specifications, and models and to discontinue models or equipment. Due to continuous product development and other pre- and post-production factors, actual vehicle, materials and specifications may vary from this brochure. Some vehicles shown with optional equipment. See the actual vehicle for complete accuracy. Availability and delivery times for particular models or equipment may vary. Specifications, options and accessories may differ in Hawaii, U.S. territories and other countries. For additional information on availability, options or accessories, see your Nissan dealer or contact Nissan North America, Inc.



And sign up for the latest news and updates on the 2016 Nissan 370Z.®

or visit NissanUSA.com/z

Los folletos de Nissan también están disponibles en español.

Para descargar el PDF, visita:

NissanUSA.com/folletos-espanol

And follow Nissan on:

