

NISSAN INTELLIGENT MOBILITY™

Nissan Intelligent Mobility guides everything we do. We're using new technologies to transform cars from mere driving machines into assistants. Together the journey is more confident, connected, and exciting. Whether it's cars that assist in the driving task, or highways that charge your EV as you go along, it's all in the very near future. And it's a future already taking shape in the Nissan you drive today.

SEE THE NISSAN LEAF® COME TO LIFE

Go to NissanUSA.com and find an interactive brochure for the Nissan LEAF® and every Nissan in the lineup. Available on desktop or smartphone, it's the full product story – including demos, videos, and complete info on trims, colors, and accessories.

Or download the Interactive Brochure Hub app on your tablet.
Free on the App Store® and Google Play.™



Innovation
that excites

2018
LEAF®

Zero Emission



¹Available services/features may be shown. Compatible connected device may be required. Only use services/features and device when safe and legal to do so. Subject to GPS and wireless network availability and connection, and system/technology limitations. Text rates/data usage/subscription may apply. Some services/features provided by companies not within Nissan or its partners' or agents' control and may be discontinued at any time. For more information, see dealer, Owner's Manual, or NissanUSA.com/connect/important-information. ²Available feature. ³It is the driver's responsibility to remain alert with hands on steering wheel, keeping a look out for other vehicles and pedestrians at all times. ⁴Public charging networks are provided by independent companies, and are not within Nissan's control. Availability of charging stations not guaranteed. ⁵Mileage estimates only. Range will vary depending upon driving/charging habits, speed, conditions, weather, temperatures, and battery age. The driver's display shown does not show default screen settings. ⁶Nissan No Charge to Charge Program applies to all new MY 2013 or later Nissan LEAF's (I) purchased or leased from a participating dealer that is located in a qualifying market, AND (II) purchased or leased during the qualifying period for such qualifying market. Fleet customers not eligible. The approximate retail value of the offer is up to \$1012, but may vary by market. The offer cannot be combined with other offers, is non-transferable, and not redeemable for cash. Offer requires activation of the EZ-Charge® Card. Charging sessions beyond 60 minutes of Level 2 charging and 30 minutes of DC Fast charging are subject to additional fees, depending on the network. Other terms, conditions, and eligibility criteria apply. Visit EZ-Charge.com or NissanUSA.com/leaf-electric-car/ev-incentives for details. Public charging stations are third-party owned, not within Nissan's control. Availability of public charging stations not guaranteed. Offer is subject to change at any time and/or is subject to early termination without notice. ⁷AEB with Pedestrian Detection is not a replacement for responsible driving. May not provide warning or braking in certain conditions. Speed and other limitations apply. See Owner's Manual for details. ⁸BSW is not a substitute for proper lane change procedures. The system will not prevent contact with other vehicles or accidents. It may not detect every vehicle or object around you. ⁹Not a substitute for proper backing procedures. May not detect all moving vehicles. Speed and other limitations apply. See Owner's Manual for details. ¹⁰LI operates only when the lane markings are clearly visible. Speed and other limitations apply. See Owner's Manual for details. ¹¹IAVM cannot completely eliminate blind spots and may not detect every object. Operates at vehicle speeds below 5 mph. Always check surroundings and turn to look behind you before moving vehicle. ¹²Use conventional brake pedal for aggressive braking situations. ¹³Extra cost option. ¹⁴Available with Technology Package only. ¹⁵Late availability. ¹⁶No tailpipe emissions. ¹⁷ITC cannot prevent accidents or loss of control. It is the driver's responsibility to be in control of the vehicle at all times. ¹⁸Use the Text Messaging feature after stopping your vehicle in a safe location. If you have to use the feature while driving, exercise extreme caution at all times so full attention may be given to vehicle operation. Compatible smartphone required. Text rates and/or data usage may apply. ¹⁹Driving is serious business and requires your full attention. If you have to use the connected device while driving, exercise extreme caution at all times so full attention may be given to vehicle operation. External device not included. ²⁰AEB cannot prevent accidents due to carelessness or dangerous driving techniques. It may not provide warning or braking in certain conditions. Speed and other limitations apply. See Owner's Manual for details. ²¹Never program while driving. GPS mapping may not be detailed in all areas or reflect current road status. ²²ICC is not a collision avoidance system or warning device. Designed to use limited braking. Failure to apply the brakes could result in an accident. ²³It is the driver's responsibility to remain alert at all times. Intelligent Driver Alertness is only a warning to inform the driver of a potential lack of driver attention or drowsiness. It does not detect and provide an alert in every situation. See Owner's Manual for details. ²⁴Genuine Nissan Accessories are covered by Nissan's Limited Warranty on Genuine Nissan Replacement Parts, Genuine NISMO® S-Tune Parts, and Genuine Nissan Accessories for the longer of 12 months/12,000 miles (whichever occurs first) or the remaining period under the 3-year/36,000-mile (whichever occurs first) Nissan New Vehicle Limited Warranty. Terms and conditions apply. See Warranty Information Booklet for details. ²⁵Cargo and load capacity limited by weight and distribution. Always secure all cargo. ²⁶Post-consumer recycled material will exceed 30%. ²⁷Brake Assist is only an aid to assist the driver and is not a collision warning or avoidance device. It is the driver's responsibility to be in control of the vehicle at all times. ²⁸Parking aid/convenience feature. Cannot completely eliminate blind spots. May not detect every object and does not warn of moving objects. Always check surroundings and turn to look behind you before moving vehicle. ²⁹Air bags are only a supplemental restraint system; always wear your seat belt. Even with the occupant-classification sensor, rear-facing child restraints should not be placed in the front-passenger's seat. All children 12 and under should ride in the rear seat properly secured in child restraints, booster seats, or seat belts according to their size. Air bags will only inflate in certain accidents; see your Owner's Manual for more details. ³⁰VDC, which should remain on when driving except when freeing the vehicle from mud or snow, cannot prevent accidents due to abrupt steering, carelessness, or dangerous driving techniques. ³¹TPMS is not a substitute for regular tire pressure checks. ³²Vehicle must be on for the Easy-Fill Tire Alert to operate. ³³2018 EPA Fuel Economy Estimate Nissan LEAF 2018 125 city, 100 highway, 112 combined. Based on EPA formula of 33.7 kW/hour equal to one gallon of gasoline energy, EPA rated the LEAF® equivalent to 125 MPGe measured as gasoline fuel efficiency in city driving, 100 MPGe in highway driving, and 112 MPGe in combined driving. Actual mileage may vary with driving conditions — use for comparison only. 2018 EPA range of 150 miles. Android®, Google®, Google Play®, and YouTube® are registered trademarks of Google Inc. The App Store® and iTunes® are registered trademarks of Apple, Inc. All rights reserved. Apple CarPlay™ is a trademark of Apple Inc. Android Auto™ is a trademark of Google Inc. Bluetooth® is a registered trademark of Bluetooth SIG, Inc. Bose® is a registered trademark of The Bose Corporation. EZ-Charge® is a registered mark of EVgo Services. Facebook® is a registered trademark of Facebook, Inc. HD Radio® is a registered trademark of iBiquity Digital Corporation. HomeLink® is a registered trademark of Gentex Corporation. Pandora® is a registered trademark of Pandora Media. Sorona® is a registered trademark of E. I. du Pont de Nemours and Company. Twitter® is a registered trademark of Twitter, Inc. This brochure is intended for general descriptive and informational purposes only. It is subject to change and does not constitute an offer, representation or warranty (express or implied) by Nissan North America, Inc. Interested parties should confirm the accuracy of any information in this brochure as it relates to a vehicle directly with Nissan North America, Inc. before relying on it to make a purchase decision. Nissan North America, Inc. reserves the right to make changes, at any time, without prior notice, in prices, colors, materials, equipment, specifications, and models and to discontinue models or equipment. Due to continuous product development and other pre- and post-production factors, actual vehicle, materials and specifications may vary from this brochure. Some vehicles shown with optional equipment. See the actual vehicle for complete accuracy. Availability and delivery times for particular models or equipment may vary. Specifications, options and accessories may differ in Hawaii, U.S. territories and other countries. For additional information on availability, options or accessories, see your Nissan dealer or contact Nissan North America, Inc. At NissanUSA.com, you'll find virtual product demonstrations, a way to "build your own Nissan," a dealer locator, and more information about key Nissan support services. Or if you'd prefer, call 1-800-NISSAN-3 for answers to specific questions about the Nissan LEAF® or any other Nissan vehicle. The Nissan names, logos, product names, feature names, and slogans are trademarks owned by or licensed to Nissan Motor Co. Ltd. and/or its North American subsidiaries. Other trademarks and trade names are those of their respective owners. **Always wear your seat belt, and please drive responsibly.** ©2017 Nissan North America, Inc. ¹⁸ Nissan LEAF. 1820666-N-12/17-60K-CGI

The All-New Nissan LEAF®
simply amazing

A powerful step forward for Nissan's 100% electric vehicle. Get ready for a whole new way to drive, where the everyday is exhilarating. Feel more confident, excited, and connected – wherever you go. All in a car that does simple things amazingly.



Nissan LEAF® SL shown in Two-tone Pearl White/Super Black.



Grab hold of a driver-centric design

It's all around you. Bold lines, distinctive touches, and the sense that this is a vehicle like no other. The Nissan LEAF's driver-centric environment proves you don't have to sacrifice comfort or convenience when driving electric. With features like a D-shaped steering wheel, distinctive center console, and an available "floating" touch-screen that puts your compatible phone on center stage, it's clear this interior was designed with you in mind.

- Apple CarPlay™ and Android Auto™^{1, 2}
- Automatic Climate Control System
- Heated front seats²
- Push Button Start

Nissan LEAF® SL shown in Light Gray Leather.

Maintains your preset speed and distance

Helps keep you centered even in the curves

Can even come to a complete stop

ProPILOT Assist: Feel free to enjoy the ride

With available ProPILOT Assist, the Nissan LEAF® helps out with daily driving – following the car ahead at a preset distance or helping keep you centered in your lane. It can even bring your Nissan LEAF to a full stop based on the traffic flow, and can bring you back up to speed when traffic starts moving again.^{2, 3}

Blink and you'll miss how Nissan LEAF saves the day

Available Nissan Intelligent Mobility technologies offer you a suite of advanced systems that can help keep an eye out, watch the flow of traffic, and even step in and take action.

- Automatic Emergency Braking with Pedestrian Detection^{2, 7}
- Blind Spot Warning^{2, 8}
- Rear Cross Traffic Alert^{2, 9}
- Intelligent Lane Intervention^{2, 10}
- Intelligent Around View® Monitor^{2, 11}

Charge at home or on the go

With a large network of reliable public charging stations, and more popping up all the time, you'll never be far from your next charge, or even a very quick top-off. Add available advanced charging applications built right into the Nissan LEAF, and it's never been easier to keep driving with confidence.⁴

PUBLIC DC QUICK CHARGING^{2, 4}

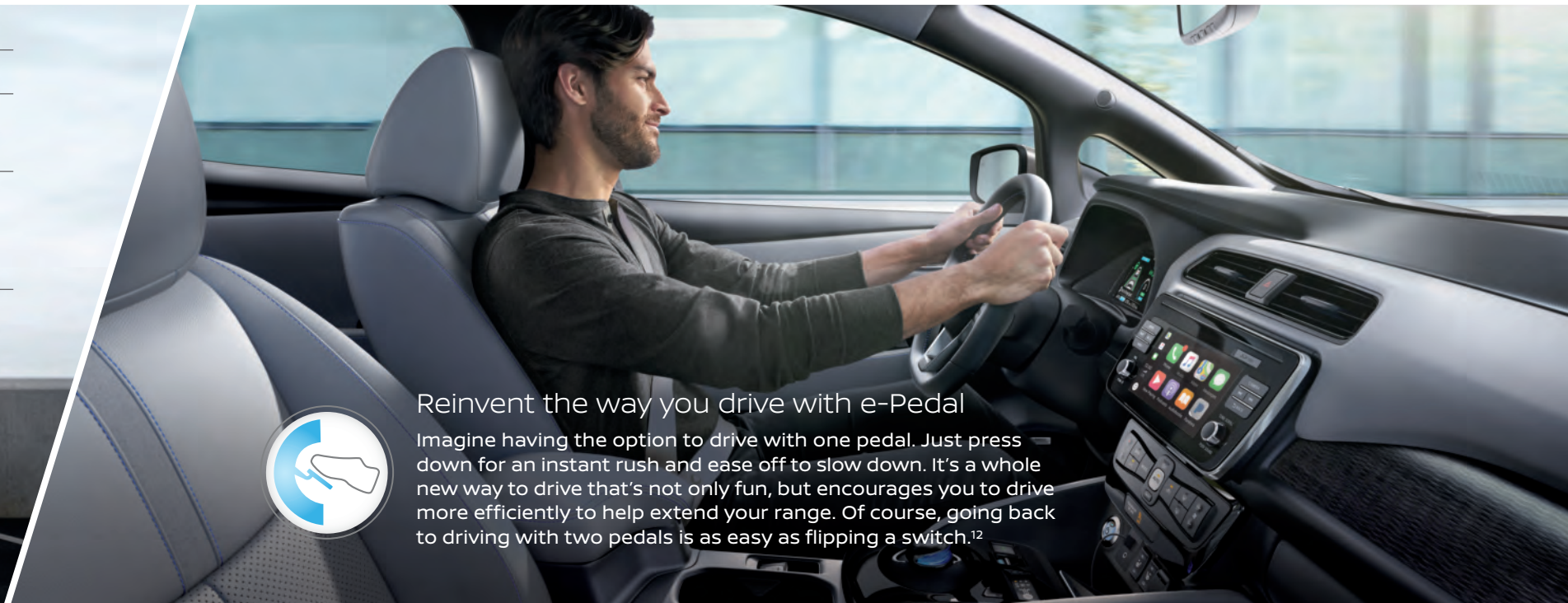
 30 MINUTES = 90 MILES OF RANGE⁵

Available 120-V/240-V portable charge cable
Enjoy complimentary charging with No Charge to Charge⁶



Reinvent the way you drive with e-Pedal

Imagine having the option to drive with one pedal. Just press down for an instant rush and ease off to slow down. It's a whole new way to drive that's not only fun, but encourages you to drive more efficiently to help extend your range. Of course, going back to driving with two pedals is as easy as flipping a switch.¹²



CHOOSE YOUR COLOR



Two-tone Pearl White/
Super Black¹³ XBJ

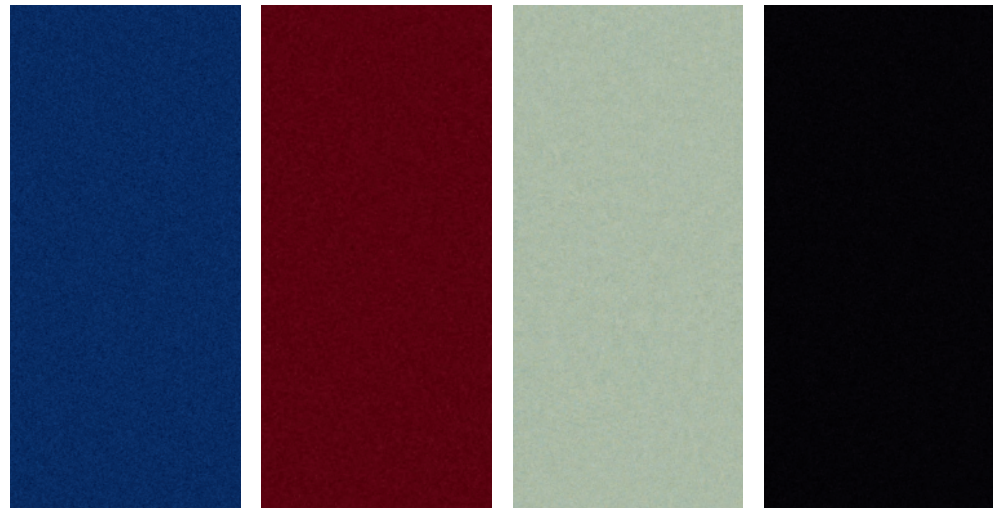
Glacier White QAK

Pearl White¹³ QAB

Brilliant Silver K23

Gun Metallic KAD

	S	SV	SL
BLACK CLOTH		<input checked="" type="checkbox"/>	
BLACK LEATHER			<input checked="" type="checkbox"/>
LIGHT GRAY LEATHER			<input checked="" type="checkbox"/>



Deep Blue Pearl RAY

Scarlet Ember¹³ NBL

Jade Frost^{13,15} KBR

Super Black KH3

■ Standard

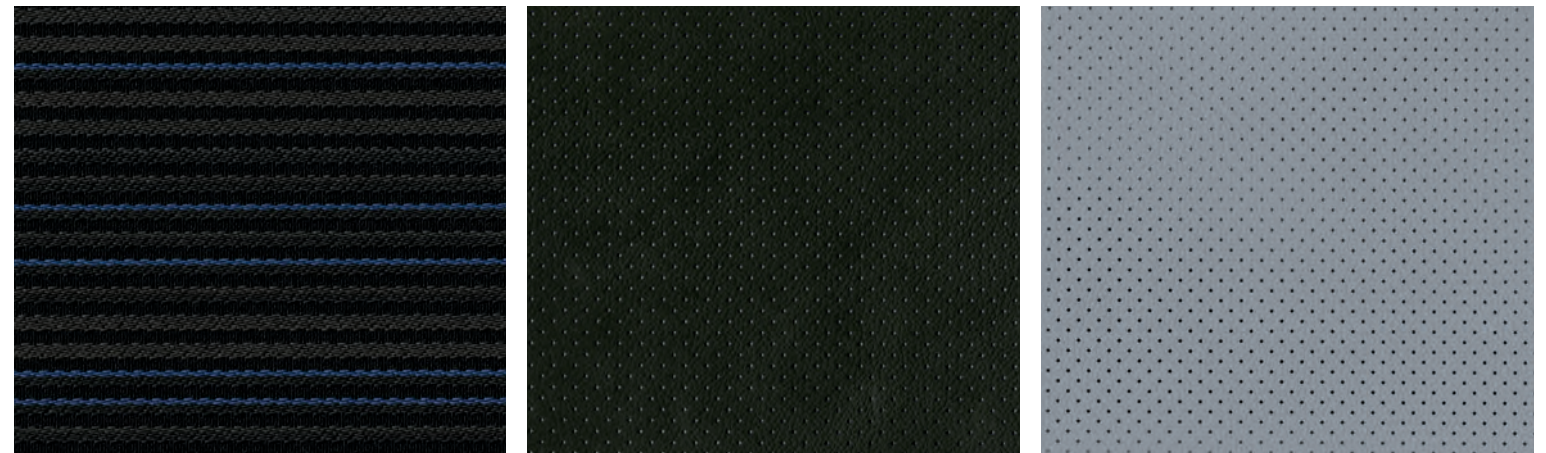
Nissan has taken care to ensure that the color swatches presented here are the closest possible representations of actual vehicle colors. Swatches may vary slightly due to the printing process and whether viewed in daylight, fluorescent or incandescent light. Please see the actual colors at your local Nissan dealer.

	S	SV	SL
BLACK CLOTH	<input checked="" type="checkbox"/>	<input checked="" type="checkbox"/>	
BLACK LEATHER			<input checked="" type="checkbox"/>
LIGHT GRAY LEATHER			<input checked="" type="checkbox"/>

CHOOSE YOUR INTERIOR



Nissan LEAF® SL shown in Light Gray Leather.



Black Cloth
S|SV

Black Leather
SL

Light Gray Leather
SL

CHOOSE YOUR TRIM LEVEL

S

- 110 kW AC synchronous electric motor with 147 hp and 236 lb-ft torque
- Emissions – Zero Emissions Vehicle (ZEV)¹⁶
- 40 kWh lithium-ion battery
- 6.6 kW onboard charger
- Portable trickle-charge cable (120 V)
- e-Pedal¹²
- Intelligent Trace Control¹⁷
- Active Ride Control
- Hill Hold Assist
- 16" Steel wheels
- Automatic on/off headlights
- Aerodynamic underbody panels and rear diffuser
- 7.0" Information display (in gauge cluster)
- 5.0" Color display
- Bluetooth® Hands-free Phone System¹
- Hands-free Text Messaging Assistant¹⁸
- Automatic Temperature Control
- Nissan Intelligent Key® with Push Button Start
- 6-way manual adjustable driver's bucket seat
- 4-way manual adjustable front-passenger's bucket seat
- Cloth seat trim
- AM/FM audio system with four speakers
- SiriusXM® Satellite Radio with 3-month complimentary trial access¹
- Bluetooth® streaming audio¹
- USB port¹⁹
- Automatic Emergency Braking²⁰

AVAILABLE PACKAGES:

- Charge Package
- All-Weather Package



SV INCLUDES S EQUIPMENT PLUS:

- Quick Charge port
- 17" Machine-finished aluminum-alloy wheels
- Fog lights
- 7.0" multi-touch control color display
- Nissan Navigation System²¹
- NissanConnect® EV & Services powered by SiriusXM®¹
- Nissan Voice Recognition for navigation and audio²¹
- Apple CarPlay™¹
- Android Auto™¹
- SiriusXM® Traffic and Travel Link with 3-month complimentary trial access¹
- AM/FM audio system with six speakers
- HD Radio®
- Intelligent Cruise Control²²
- Leather-wrapped steering wheel

AVAILABLE PACKAGES:

- All-Weather Package
- Technology Package



SL INCLUDES SV EQUIPMENT PLUS:

- Portable charge cable (120 V/240 V)
- LED headlights with LED signature Daytime Running Lights
- Heated outside mirrors
- Outside mirrors with integrated LED turn signal indicators
- Intelligent Around View® Monitor¹¹
- Intelligent Driver Alertness²³
- Rear under-seat heating ducts
- Hybrid heater system
- Auto-dimming rearview mirror with HomeLink® Universal Transceiver
- Removable cargo cover
- 8-way power adjustable driver's bucket seat with 2-way adjustable lumbar
- Leather-appointed seats
- Heated front seats
- Heated steering wheel
- Bose® Energy Efficient Series Premium Audio System with seven speakers
- Blind Spot Warning⁸
- Rear Cross Traffic Alert⁹

AVAILABLE PACKAGE:

- Technology Package



CHOOSE YOUR PACKAGE

CHARGE PACKAGE | S

Portable charge cable (120 V/240 V), Quick Charge port

ALL-WEATHER PACKAGE | S

Heated outside mirrors, Rear under-seat heating ducts, Heated front seats, Heated steering wheel

ALL-WEATHER PACKAGE | SV

Heated outside mirrors, Rear under-seat heating ducts, Hybrid heater system, Heated front seats, Heated steering wheel

TECHNOLOGY PACKAGE | SV

Portable charge cable (120 V/240 V), Electronic parking brake, LED headlights with LED signature Daytime Running Lights, ProPILOT Assist,³ High Beam Assist, Auto-dimming rearview mirror with HomeLink® Universal Transceiver, 8-way power adjustable driver's bucket seat with 2-way adjustable lumbar, Automatic Emergency Braking with Pedestrian Detection,⁷ Blind Spot Warning,⁸ Rear Cross Traffic Alert,⁹ Intelligent Lane Intervention¹⁰

TECHNOLOGY PACKAGE | SL

Electronic parking brake, ProPILOT Assist,³ High Beam Assist, Automatic Emergency Braking with Pedestrian Detection,⁷ Intelligent Lane Intervention¹⁰

Fast. Easy. Charging.

With the EZ-Charge® card and the Nissan LEAF® EZ-Charge® app, it's never been easier to charge on the go.

EZ-Charge® lets you carry a single access card for charging your Nissan LEAF® on multiple networks across America, while the Nissan LEAF EZ-Charge® app provides charging station maps, the closest DC Quick Charger, a Route Planner, and more.⁶ Available in the Apple App Store® and Google Play™. **EZ-Charge.com**



GET THE CARD



GET THE APP

CHOOSE YOUR ACCESSORIES



Every Genuine Nissan Accessory is custom-fit, custom-designed and durability-tested. Each one is also backed by Nissan's 3-year/36,000-mile (whichever occurs first) limited warranty (if installed by dealer at the time of purchase).²⁴ Ask your dealer whether a specific Genuine Nissan Accessory may be financed when installed by the dealer at the time of purchase.

A. Door Sill Plates

For a grand entry every time.

B. Rear Cargo Cover²⁵

No one outside needs to know what's in there.

C. Sorona® Carpeted Floor Mats²⁶

Made of renewably sourced fiber, ready to protect your carpeting.

D. All-season Molded Floor Protectors

Neither sleet, snow, nor mud shall mess up your ride.

E. Clear Front Bumper Protector

Keep your port in top condition, even with everyday charging.

F. Chrome Rear Bumper Protector

Scratches? What scratches?

G. Carpeted Cargo Mat²⁵

The plush way to protect.

H. Cargo Organizer²⁵

Indulge your inner neat freak.

Additional Accessories:

- Splash Guards
- Cargo Net²⁵
- Recycling and Shopping Bags
- Frameless Rear View Mirror with Universal Remote
- Nissan License Plate Frames
- Nissan Valve Stem Caps
- And More

GENUINE NISSAN ACCESSORIES

It's unique
now make it yours

For more information, and to shop online for Genuine Nissan Accessories, go to bit.ly/18leaf-estore



Nissan LEAF® SL shown in Pearl White with Chrome Rear Bumper Protector and Splash Guards.

SPECIFICATIONS

Electric Motor	S	SV	SL
110 kW AC synchronous electric motor Horsepower – 147 hp Torque – 236 lb-ft	■	■	■
Emissions – Zero Emissions Vehicle (ZEV) ¹⁶	■	■	■
40 kWh lithium-ion battery	■	■	■
6.6 kW onboard charger	■	■	■
Portable trickle-charge cable (120 V)	C	T1	■
Portable charge cable (120 V/240 V)	C	■	■
Quick Charge port	C	■	■

Drivetrain	S	SV	SL
e-Pedal ¹²	■	■	■
Regenerative braking system	■	■	■
Eco Mode	■	■	■
B-mode	■	■	■
Intelligent Trace Control ¹⁷	■	■	■
Active Ride Control	■	■	■

Brakes	S	SV	SL
Front and rear vented disc brakes	■	■	■
4-wheel Anti-lock Braking System (ABS)	■	■	■
Electronic Brake force Distribution (EBD)	■	■	■
Brake Assist ²⁷	■	■	■
Hill Hold Assist	■	■	■
Electronic parking brake		T1	T2

Suspension/Chassis Bracing/Steering	S	SV	SL
Independent strut front suspension	■	■	■
Torsion beam rear suspension	■	■	■
Front and rear stabilizer bars	■	■	■
Vehicle-speed-sensitive electric power steering	■	■	■

Wheels/Tires	S	SV	SL
16" x 6.5" steel wheels	■		
17" x 6.5" machine-finished aluminum-alloy wheels		■	■
P205/55R16 all-season tires	■		
P215/50R17 all-season tires		■	■
Tire repair kit	■	■	■

Exterior Features	S	SV	SL
Halogen headlights	■	■	
LED headlights with LED signature Daytime Running Lights		T1	■
Automatic on/off headlights	■	■	■
Fog lights		■	■
Aerodynamic underbody panels and rear diffuser	■	■	■
Rear spoiler	■	■	■
Dual power remote-controlled outside mirrors	■	■	■
Heated outside mirrors	A1	A2	■
Outside mirrors with integrated LED turn signal indicators			■
Charge port with light and lock	■	■	■
UV-reducing solar glass	■	■	■

Comfort/Convenience	S	SV	SL
7.0" Information display (in gauge cluster)	■	■	■
5.0" Color display	■		
7.0" Multi-touch control color display		■	■
Nissan Navigation System ²¹		■	■
NissanConnect® EV & Services powered by SiriusXM ²¹		■	■
Nissan Voice Recognition for navigation and audio ²¹		■	■
Apple CarPlay™ ¹		■	■
Android Auto™ ¹		■	■
SiriusXM® Traffic and Travel Link with 3-month complimentary trial access ¹		■	■
Bluetooth® Hands-free Phone System ¹	■	■	■
Hands-free Text Messaging Assistant ¹⁸	■	■	■
RearView Monitor ²⁸	■	■	
Intelligent Around View® Monitor ²¹			■
Cruise control with steering-wheel mounted controls	■		
Intelligent Cruise Control ²²		■	■
ProPILOT Assist ³		T1	T2
High Beam Assist		T1	T2
Intelligent Driver Alertness ²³			■
Automatic Temperature Control	■	■	■
Rear under-seat heating ducts	A1	A2	■
Hybrid heater system		A2	■
Nissan Intelligent Key® with Push Button Start	■	■	■
12-volt DC power outlet	■	■	■
Power door locks with auto-locking feature	■	■	■
Power windows with driver's window one-touch auto up/down	■	■	■
Tilt steering column	■	■	■
Auto-dimming rearview mirror with HomeLink®		T1	■
Universal Transceiver			■
Variable intermittent windshield wipers and intermittent rear window wiper	■	■	■
Front map lights	■	■	■
Sun visors with vanity mirrors and extensions	■	■	■
Two cup holders	■	■	■
Four bottle holders	■	■	■
Removable cargo cover			■

Seating/Appointments	S	SV	SL
6-way manual adjustable driver's bucket seat	■	■	
8-way power adjustable driver's bucket seat with 2-way adjustable lumbar		T1	■
4-way manual adjustable front passenger's bucket seat	■	■	■
Cloth seat trim	■	■	
Leather-appointed seats			■
Heated front seats	A1	A2	■
60/40 Split fold-down rear seats	■	■	■
Leather-wrapped steering wheel		■	■
Heated steering wheel	A1	A2	■

Audio/Entertainment	S	SV	SL
AM/FM audio system with four speakers	■		
AM/FM audio system with six speakers		■	
Bose® Energy Efficient Series Premium Audio System with seven speakers			■
SiriusXM® Satellite Radio with 3-month complimentary trial access ¹	■	■	■
Radio Data System (RDS)	■	■	■
HD Radio®		■	■
Bluetooth® streaming audio ¹	■	■	■
USB port ¹⁹	■	■	■
Auxiliary audio input jack ¹⁹	■	■	■
Steering wheel-mounted audio controls	■	■	■

Safety/Security	S	SV	SL
Nissan Advanced Air Bag System with dual-stage supplemental front air bags with seat belt and occupant-classification sensors ²⁹	■	■	■
Driver and front-passenger seat-mounted side-impact supplemental air bags ²⁹	■	■	■
Roof-mounted curtain supplemental air bags with rollover sensor for side-impact head protection for front and rear-seat outboard occupants ²⁹	■	■	■
Automatic Emergency Braking ²⁰	■	■	■
Automatic Emergency Braking with Pedestrian Detection ⁷		T1	T2
Blind Spot Warning ⁸		T1	■
Rear Cross Traffic Alert ⁹		T1	■
Intelligent Lane Intervention ¹⁰		T1	T2
Vehicle Dynamic Control (VDC) ³⁰ with Traction Control System (TCS)	■	■	■
3-point ALR/ELR passenger seat belt system (ELR for driver)	■	■	■
Front seat belts with pretensioners and load limiters	■	■	■
LATCH System (Lower Anchors and Tethers for CHildren)	■	■	■
Zone Body construction with front and rear crumple zones	■	■	■
Hood buckling creases and safety stops	■	■	■
Energy-absorbing steering column	■	■	■
Slide-away brake pedal assembly	■	■	■
Knee bolsters	■	■	■
Pipe-style steel side-door guard beams	■	■	■
Tire Pressure Monitoring System (TPMS) with Easy-Fill Tire Alert ^{31, 32}	■	■	■
Nissan Vehicle Immobilizer System	■	■	■
Vehicle Security System	■	■	■

DIMENSIONS/CAPACITIES/WEIGHTS/MPGE

Dimensions	
Exterior – Inches	
Wheelbase	106.3
Overall length/width/height	176.4/70.5/61.4
Track width (front/rear)	60.6/61.2 (S)
	60.2/60.8 (SV/SL)

Aerodynamics – Cd	
Drag coefficient	0.28

Interior (front/rear) – Inches			
Head room	41.2/37.3	Hip room	51.7/50.0
Leg room	42.1/33.5	Shoulder room	54.3/52.5

Capacities	
Seating capacity	5
EPA interior passenger volume (cu. ft.)	92.4
Total interior volume (cu. ft.)	116.0
Cargo volume with rear seat up (cu. ft.)	23.6
Cargo volume with rear seat down (cu. ft.)	30.0

Curb Weights – Lbs.			
	S	SV	SL
Base total	3,433	3,468	3,508

2018 EPA Fuel Economy Estimates			
City/Hwy/Combined MPGe ³³	S	SV	SL
Electric motor	125/100/112	125/100/112	125/100/112

NISSAN ROADSIDE ASSISTANCE

Your peace of mind is on us. For 36 months or 36,000 miles, whichever comes first, your new Nissan is covered for the following:¹

- Flat-tire changes
- Trip Interruption benefits
- Vehicle lockouts
- Emergency fuel delivery
- Jump starts

Follow Nissan on:



visit NissanUSA.com/LEAF

PRINTED IN USA