



SHIFT_

2013
QUEST[®]



LIVE IN THE MOMENT.

THE FEELING OF INNOVATION.

Today will be different. You've got Quest® on your side. When life comes calling, rely on the modern 7-seater with style. Daily routine or family road trip, celebrate it all – with accommodations that are nothing but first class. Say yes to a roof made of sky,¹ sliding doors that open with one touch,¹ and seats so incredibly easy to configure, you'll look for excuses to pack up and go. Nissan. Innovation that excites.TM



Nissan Quest LE shown in Platinum Graphite with Dual Opening Glass Moonroof Package.

¹Available feature.



Scan this with your QR code-reader app to see a short video on Quest's Blind Spot Warning System.
bit.ly/questbsw



WHAT IF YOU COULD DOUBLE-CHECK YOUR DOUBLE-CHECK?

You always check your outside mirrors to change lanes. What if your vehicle kept an eye on things as well? Quest's available Blind Spot Warning System uses radar to do just that. When it detects a vehicle in the blind spot area, an indicator lights up on your mirror. If you put on your turn signal, the indicator flashes and you'll hear a warning chime. It's nice to have a little extra peace of mind.¹

Nissan Quest SL shown in Platinum Graphite with Dual Opening Glass Moonroof Package.

¹The Blind Spot Warning System is not a substitute for proper lane change procedures. The system will not prevent contact with other vehicles or accidents or detect every vehicle or object around you.



**THE FEELING OF AN UPGRADE,
EVERY TIME YOU OPEN THE DOOR.**



MAKING ROOM FOR THE TO-DO LIST, AND THAT GREAT SALE, TOO.

What good is storage if it isn't always there for you? Unlike other minivans, Quest's unique third row folds forward out of the way rather than down into the rear storage well. So to create the wide-open cargo space you see here, you don't have to first empty out all the stuff you carry in the well underneath. Life just got easier.

Nissan Quest LE shown in Beige Leather with Dual Opening Glass Moonroof Package.



THE FEELING OF FINDING A
NEW MEMBER OF THE FAMILY.



Nissan Quest SL shown in Brilliant Silver.



INNOVATION THAT'S ON YOUR SIDE.

What's it like to have a Quest in your life? Not just a minivan, but possibly the most helpful member of your family. Imagine putting air in your tires and knowing when they're full! Or looking up to see not one, but two, available dual-opening moonroofs. Freezing outside? Available Quick Comfort heated front seats warm you up fast. Long to-do list? Quest makes you a hero. Whether seating seven or filling with gardening supplies, you've never flipped and folded seats so easily. With a unique third row that folds forward instead of stowing in the rear, you can load up on spring blooms without stopping to drop off the groceries. No matter what's on the agenda, it's your life Quest has in mind.

Nissan Quest LE shown in Beige Leather.



**FLIP, FOLD OR FIT.
ALL AT A MOMENT'S NOTICE.**

Cargo and load capacity limited by weight and distribution. Always secure all cargo.

CARGO MADE SMARTER.

In Quest, not only does the second row fold flat, forward, and out of the way, so does the third. So unlike other minivans, instead of stowing seats, the cargo well behind the third row is a permanent place to put whatever you like, eliminating the need to ever empty it out.



All seats up. Seven on board and you still have room for gear. The permanent storage well has two separate lids. You can keep a flat cargo floor on one side, and leave the other lid open to carry taller things.

Accessory Cargo Organizer shown.



All seats down. Go full cargo mode, while Quest's practical and permanent rear storage well is always at the ready.



Any way you look at it, Quest flips and folds like no other minivan.

¹119.8 cu. ft. on S, SV and SL models without Bose® audio system. 115.1 cu. ft. on SL and LE models with Bose® audio system. Cargo and load capacity limited by weight and distribution. Always secure all cargo.

Permanent rear storage well.

The cargo well behind the rear seats is always open for business, thanks to third-row seats that fold forward.

Easy up, easy down. Push the release button and the third-row seats fold right down. The available power-up feature brings them back into place at the push of a button.

A second row you never have to remove. The second row folds flat, which means no more wrestling with seats.

Power-down rear windows. Fresh air for all. In Quest, your second-row passengers have their own power window.

Where to put the long legs? With Quest's sliding second row, you can create more leg room where you need it, in the second or third row.

Quick Comfort heated front seats.¹ Get to cozy quicker. Key areas of the body are heated in sequence for warming that's ASAP.

Comfort seating design. Shaped and padded especially for improved posture support and comfort. Designed with your next road trip in mind.



Scan this with your QR code-reader app to see a short video of Quest in action. Or go to bit.ly/questseating



Third-row seat down. Up to 75 cu. ft. of cargo room.² And thanks to the clever no-stow, forward-folding third row, you can pack some gear in the permanent rear storage well in the back.



Second- and third-row seats down. Just the pair of you cruising the flea market? What will you bring home? With up to 119.8 cu. ft. to fill, there's no telling.³ And you won't even have to remove the second row.

Nissan Quest LE shown in Beige Leather.

¹Standard on Quest SL and LE. Available on Quest SV with SV Leather Package. ²75 cu. ft. on S, SV and SL models without Bose® audio system. 70.3 cu. ft. on SL and LE models with Bose® audio system. ³119.8 cu. ft. on S, SV and SL models without Bose® audio system. 115.1 cu. ft. on SL and LE models with Bose® audio system.

Power second-row windows
Open up to let fresh air in, or to just wave goodbye.

Conversation mirror
Don't miss a thing. With this available feature, see who's behaving, or not, in the rows behind.

LIFE MADE EASIER.

From a convenient way to get everyone inside to a better way to wave goodbye, you'll see innovative design at work for you – everywhere you look.

Power rear liftgate
This available feature is the next best thing to your own doorman. Just push a button on your keyless remote, the liftgate or on the dash.



Nissan Intelligent Key® and Push Button Ignition.
A system so smart, you can unlock the doors, open the available power rear liftgate and start the engine, all without taking the key out of your pocket or purse.



Nissan Quest SL shown in Pearl White with Beige Leather.

Removable 2nd-row console. Your choice. Cup holders for the rear and a place to stash small items. Or remove this handy console to create some walk-around space.



Low step-in height
It's easy for anyone to get in a Quest.

One-touch power sliding doors
Hands full? No problem. Quest's available one-touch power sliding doors open easily.



Scan this with your QR code-reader app to see a short video on on the thoughtful technology available on Quest. Or go to bit.ly/questtech



TECHNOLOGY CHANGES EVERYTHING.

Hungry? Lost? Bored back there? With these available high-tech and instant entertainment features, Quest has you covered. Let the road trip begin.

11" DVD monitor. Our best-in-class 11" 16:9 viewing area DVD monitor keeps everyone happy for hours and even has inputs for gaming.¹

Advanced Climate Control System. First in its class.¹ Control your inside climate and clean the air quickly, when you need to. Filter the cabin air or help reduce outside intrusion, and even help reduce bothersome allergens.²

Nissan Navigation System. Quest's advanced navigation system gives you the tools to make every trip a snap. Find a new restaurant and even see what *Zagat Survey*[®] has to say. Hear turn-by-turn Voice Guidance, then get around jams with available real-time traffic reports from NavTraffic. Know the weather, the quickest way to the freeway and make it there on time.^{3,4}

iPod[®] connectivity. Your music comes along. On all models excluding Quest S, a standard USB input is ideal for your iPod[®] so you can easily control your playlist. On Quest S, you can plug your player into a standard auxiliary audio input.^{5,6}

Bluetooth[®] Hands-free Phone System. A safer way to stay in touch. Now you can make calls using the buttons on the steering wheel and listen via the speakers. You can also store your address books and use voice-activation to make calls by name.⁷

Bose[®] audio system. A 13-speaker Bose[®] audio system is made just for Quest, designed around the cabin's unique acoustics to enhance its performance. From the driver's seat to the third row, every passenger enjoys the clarity and depth of a live show.



¹Ward's Light Vehicle Market Segmentation. MY13 Quest vs. 2012 Small Van Class. ²The Advanced Climate Control System with Plasmacluster[®] air purifier helps scrub the air in the vehicle's interior. The system senses exterior odors, suppresses unpleasant interior odors, stops the inflow of external odors and helps keep the cabin smelling fresh, but does not always eliminate odors. ³Never program while driving. GPS mapping may not be detailed in all areas or reflect current road regulations. ⁴Required SiriusXM Satellite Radio, NavTraffic and NavWeather subscriptions sold separately after trial period. Installation costs, one-time activation fee, other fees and taxes will apply. NavTraffic available in select markets. Services available only to those 18 or older in the 48 contiguous states and D.C. Fees and programming subject to change. Subscriptions governed by Customer Agreement available at siriusxm.com. ©2012 Sirius XM Radio Inc. Sirius, XM and all related marks and logos are trademarks of Sirius XM Radio Inc. ⁵Driving is serious business and requires your full attention.

Do not operate any devices connected to the USB or auxiliary audio input jack while driving. ⁶Always give your full attention to driving. Avoid operating your iPod[®] in such a way that you can be distracted during vehicle operation. See dealer for details. iPod is a registered trademark of Apple, Inc. All rights reserved. iPod not included. ⁷Availability of specific features is dependent upon the phone's Bluetooth[®] support. Please refer to your phone Owner's Manual for details. The Bluetooth word mark and logos are owned by Bluetooth SIG, Inc., and any use of such marks by Nissan is under license. ⁸Bose is a registered trademark of The Bose Corporation. ⁹Zagat Survey is a registered trademark of Zagat Survey, LLC Ltd. ¹⁰Plasmacluster is a registered trademark of Sharp Corporation.



Scan this with your QR code-reader app to see a short video of Quest in action. Or go to bit.ly/questeasyfill

DO IT ALL. AND THEN SOME.

Quest gives you all you need to conquer the daily routine. Changing lanes – we’ve got your back. Maneuvering in tight spaces – no problem. Powerful? Yes. Easy? Of course.

Around View® Monitor. Make that space yours. With Quest’s available Around View® Monitor, you have not one, but four, wide-angle cameras as your helpful spotters. It works by converting the view from each wide-angle camera into a composite overhead view of your Quest. In “Reverse,” the system automatically shows the rear view/bird’s-eye combo (A). Press the “Camera” button and it changes to a right curbside view. Likewise, in “Drive,” you can look at what’s in front, or use the “Camera” button for either a right curbside (B) or bird’s-eye view (C).¹

Powerful V6. With 260 horsepower and 240 lb-ft of torque, Quest’s powerful V6 gives you the confidence and the power to get around the way you need to. Then change the filters and fluids regularly and cover 105,000 miles before needing a tune-up.²

CVT. The smarter way to shift. Quest’s virtually “gearless” CVT transmission keeps you in the sweet spot. When accelerating, CVT maintains engine rpm – instead of shifting – for a seamless wave of power. At cruising speed, it maintains low rpm for efficiency.

Speed-sensitive Steering. So responsive, it gives you the assist you need at different speeds. Steering is easier at low speeds (for parking), then firms up at higher cruising speeds.

Easy-Fill Tire Alert. No more taking your chances with that sketchy gauge at the gas station. Just fill with air until a friendly beep of the horn signals that you’ve reached the correct pressure.³

IT’S CLEAR TO SEE HOW QUEST ASSISTS.

Extra-view corner window

Improved visibility through the turns.

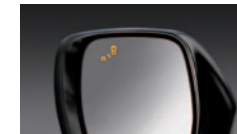
Large mirror design

So handy, so you can see more.



RearView Monitor

Helps you see what’s behind you when backing up.^{4,5}



Blind Spot Warning System

An indicator appears on the outside mirror when another vehicle is detected in the blind spot area. Put your turn signal on and the indicator flashes with a warning chime to alert you.^{5,6}

Tilt-down mirrors

In reverse, mirrors tilt down for a better view of the curb.⁵

Screens shown for demonstration only. Actual appearance may vary. ¹Parking aid/convenience feature. Cannot completely eliminate blind spots. May not detect every object and does not warn of moving objects. Always check surroundings before moving vehicle. Not a substitute for proper backing procedures. Always turn to check what is behind you before backing up. ²Under normal driving conditions with routine fluid/filter changes. See Owner’s Manual for details. ³Vehicle must be on for Easy-Fill Tire Alert to operate. ⁴Parking aid/convenience feature. Cannot completely eliminate blind spots or warn of moving objects. May not detect every object. Always check surroundings before moving vehicle. Not a substitute for proper backing procedures. Always turn to check what is behind you before backing up. ⁵Available feature. ⁶The Blind Spot Warning System is not a substitute for proper lane change procedures. The system will not prevent contact with other vehicles or accidents or detect every vehicle or object around you.



Scan this with your QR code-reader app to see a short video on how Snug Kids helps you find the right CRS for your Nissan. Or go to bit.ly/NissanSnugKids



SAFETY ALL AROUND.

It's protecting you and your most precious cargo that drives our comprehensive approach to safety.

Six Standard Air Bags. The Nissan Advanced Air Bag System incorporates seat belt sensors and an occupant-classification sensor to inflate the dual-stage supplemental front air bags according to crash severity and seat belt usage. Quest also has side-impact supplemental air bags built into each front seat so they move with you as you adjust your seat. And two roof-mounted curtain side-impact supplemental air bags help provide head protection for all of the outboard occupants.¹

Active Front-seat Head Restraints. These help reduce the chance of whip-lash injuries to you and your front passenger by moving up and forward during certain rear-end collisions.

Vehicle Dynamic Control/Traction Control System. Quest's Vehicle Dynamic Control (VDC) helps you stay on your steered path by sensing understeer or oversteer and compensating accordingly.² Get a grip with Traction Control System (TCS). It senses drive-wheel spin and reduces engine power and/or applies front brakes to help maintain traction.

Anti-lock Braking System. ABS pumps the brakes faster than you could in sudden-braking situations, to help prevent wheel lockup.

Electronic Brake force Distribution (EBD). Monitors weight distribution and adjusts rear brake force for more balanced braking.

Brake Assist. Quick! In an emergency, Brake Assist helps boost braking by applying additional braking pressure.

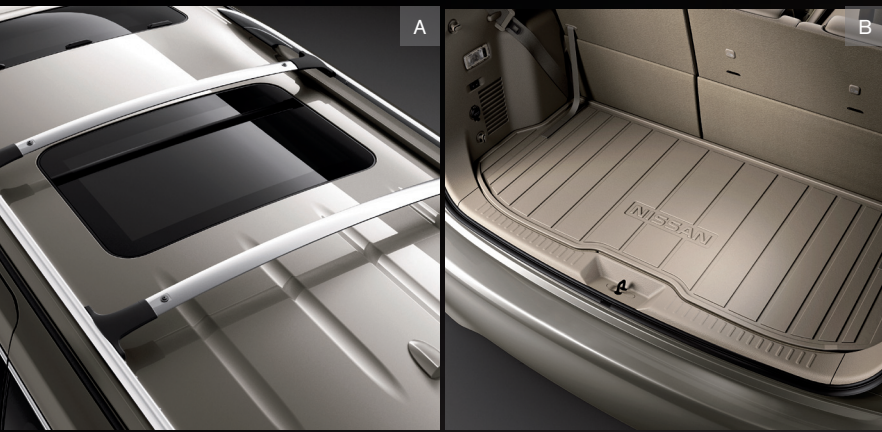
Brake Override Technology. Like every Nissan since 2005, Quest comes standard with Brake Override Technology. It's designed to help slow down your vehicle and bring it to a safe stop in an emergency by overriding accelerator input and reducing engine power when the accelerator and brake pedals are applied simultaneously.

LATCH. The Quest LATCH System (Lower Anchors and Tethers for Children) lets you easily secure LATCH-compatible child restraints in specific second- or third-row seats without using a seat belt or a locking clip.

snug4kids™ Nissan safety engineers have dedicated thousands of hours to evaluating hundreds of child restraints in Nissans. The result: An industry first, The Snug Kids Child Safety Seat Fit Guide. This guide lists child seats that fit the rear seats of Nissan vehicles, as well as offers invaluable tips on correct installation. Look for the latest Fit Guide at NissanUSA.com/SnugKids.

Quest for Safety® Program. Committed to child-seat safety, Nissan launched the award-winning Quest for Safety® program in 1998 to inform caregivers how to ensure proper child seat safety usage.

¹Air bags are only a supplemental restraint system; always wear your seat belt. Even with the occupant-classification sensor, rear-facing child restraints should not be placed in the front-passenger's seat. Also, all children 12 and under should ride in the rear seat properly secured in child restraints, booster seats, or seat belts according to their size. Air bags will only inflate in certain accidents. See your Owner's Manual for more details. Inflated air bags shown for illustration purposes only, actual coverage area may differ. Actual air bags deflate after deployment. ²VDC, which should remain on when driving except when freeing the vehicle from mud or snow, cannot prevent accidents due to abrupt steering, carelessness, or dangerous driving techniques. Always drive safely.



A



B



C



D



E



F



G

**GENUINE NISSAN ACCESSORIES.
IMPRESS. CONNECT. PROTECT. ORGANIZE.**

Every Genuine Nissan Accessory is: custom-fit, custom-designed and durability-tested; backed by Nissan's 3-year/36,000-mile limited warranty; and can be financed when installed by dealer at time of purchase.¹

- A. Roof Rail Crossbars^{2,3}**
Made of steel, so you know they're good.
- B. Cargo Area Protector**
Because being a cargo area isn't easy.
- C. Hatch Tent**
It's a minivan. It's a campsite. It's both!
- D. Rear Bumper Protector**
Scratches? What scratches?
- E. Interior Accent Lighting**
Bring some color to the carpool.
- F. Cargo Organizer**
Indulge your inner neat freak.
- G. Illuminated Kick Plates (2-piece set)**
Fewer scuffs and a grand entry, every time.

Additional Accessories:

- Child Seat Protector
- Family Travel Clean-up Kit
- Hood Protector
- Carpeted Floor Mats
- All-season Floor Mats
- Towing Accessories
- Nissan VTRS (Vehicle Tracking and Recovery System)⁴
- And More

¹Covered by Nissan's Limited Warranty on Genuine Nissan Accessories for the longer of 12 months/12,000 miles or the remaining period under the 3-year/36,000-mile Nissan New Vehicle Limited Warranty. Terms and conditions apply. See Warranty Information Booklet for details. ²Cargo and load capacity limited by weight and distribution. Always secure all cargo. ³Heavy loading of the minivan with cargo, especially on the roof, will affect handling and stability of the vehicle. ⁴VTRS requires a constant 12-volt source as well as cellular and satellite GPS service to be available and operating for VTRS' features to function properly.

MAKE EVERY
DAY EVEN
MORE
SPECIAL.

For more information on the complete line of Genuine Nissan Accessories, go to NissanUSA.com/accessories. Or shop online at the Nissan eStore.



Nissan Quest SL shown in Brilliant Silver with Dual Opening Glass Moonroof Package with Hood Protector, Roof Rail Crossbars, Side-window Deflectors, Chrome Fog Light Trim and Splash Guards.

CHOOSE FROM THESE TRIM LEVELS

S

- 3.5-liter V6 engine with Xtronic CVT[®] (Continuously Variable Transmission)
- Anti-lock Braking System (ABS)
- Vehicle Dynamic Control (VDC)¹ and Traction Control System (TCS)
- Tire Pressure Monitoring System (TPMS) with Easy-Fill Tire Alert²
- Nissan Intelligent Key[®] with Push Button Ignition
- AM/FM/CD audio system with auxiliary audio input jack³
- Power second-row side windows
- 7-passenger seating capacity and permanent rear storage (behind third row)
- Fold-flat second-row captain's chairs and fold-flat third-row bench seat
- Wood-tone trim on dashboard and front door panels
- Nissan Advanced Air Bag System and six standard air bags⁴



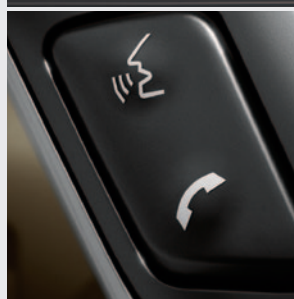
SV

INCLUDES S EQUIPMENT PLUS:

- 16" Aluminum-alloy wheels
- Fog lights
- One-touch power sliding doors
- RearView Monitor⁵
- Conversation mirror
- Premium AM/FM/CD audio system with 4.3" color display and six speakers
- SiriusXM Satellite Radio⁶
- Bluetooth[®] Hands-free Phone System⁷
- USB connection port for iPod[®] interface and other compatible devices³
- Leather-wrapped steering wheel with illuminated audio controls
- Tri-zone Automatic Temperature Control
- Privacy glass

KEY AVAILABLE PACKAGES:

- Leather Package
- DVD Entertainment System Package



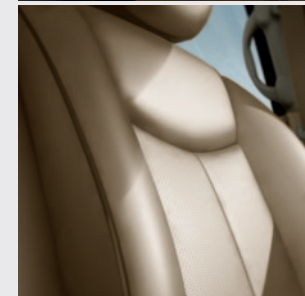
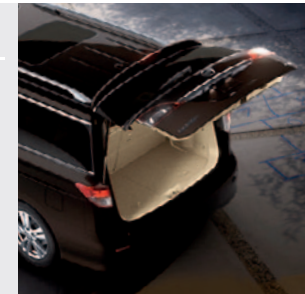
SL

INCLUDES SV EQUIPMENT PLUS:

- 18" Aluminum-alloy wheels
- Roof rails
- Side sill spoilers
- One-touch power liftgate
- Leather-appointed seats and leather-wrapped shift knob
- Quick Comfort heated front seats
- 8-way power driver's seat with power lumbar support
- Auto-dimming interior rearview mirror with digital compass
- HomeLink[®] Universal Transceiver

KEY AVAILABLE PACKAGES:

- DVD Entertainment System Package
- Dual Opening Glass Moonroof Package
- Bose[®] Audio System Package



LE

INCLUDES SL EQUIPMENT PLUS:

- Around View[®] Monitor⁸
- Blind Spot Warning System⁹
- Automatic tilt-in-reverse outside mirrors
- Nissan Hard Drive Navigation System with 8-inch touch-screen monitor and voice recognition¹⁰
- DVD Entertainment System with second-row 11.0" DVD monitor
- Bose[®] audio system with 13 speakers
- Advanced Climate Control System with polyphenol microfilter¹¹
- Driver's memory seat system
- 4-way power front-passenger's seat
- Power-return third-row seat

KEY AVAILABLE PACKAGE:

- Dual Opening Glass Moonroof Package



¹VDC, which should remain on when driving except when freeing the vehicle from mud or snow, cannot prevent accidents due to abrupt steering, carelessness, or dangerous driving techniques. Always drive safely. ²Tire Pressure Monitoring System is not a substitute for regular tire pressure checks. Vehicle must be on for Easy-Fill Tire Alert to operate. ³Driving is serious business and requires your full attention. Do not operate any devices connected to the USB or auxiliary audio input jack while driving. iPod is a registered trademark of Apple, Inc. All rights reserved. iPod not included. ⁴Air bags are only a supplemental restraint system; always wear your seat belt. Even with the occupant classification sensor, rear-facing child restraints should not be placed in the front-passenger's seat. Also, all children 12 and under should ride in the rear seat properly secured in child restraints, booster seats, or seat belts according to their size. Air bags will only inflate in certain accidents; see your Owner's Manual for more details. ⁵Parking aid/convenience feature. Cannot completely eliminate blind spots or warn of moving objects. May not detect every object. Always check surroundings before moving vehicle. Not a substitute for proper backing procedures. Always turn to check what is behind you before backing up. ⁶Required SiriusXM Satellite Radio, NavTraffic and NavWeather subscriptions sold separately after trial period. Installation costs, one-time activation fee, other fees and taxes will apply. NavTraffic available in select markets. Services available only to those 18 or older in the 48 contiguous states and D.C. Fees and programming subject to change. Subscriptions governed by Customer Agreement available at siriusxm.com. ©2012

Sirius XM Radio Inc. Sirius, XM and all related marks and logos are trademarks of Sirius XM Radio Inc. ⁷Availability of specific features is dependent upon the phone's Bluetooth[®] support. Please refer to your phone Owner's Manual for details. Bluetooth word mark and logos are owned by Bluetooth SIG, Inc., and any use of such marks by Nissan is under license. ⁸Parking aid/convenience feature. Cannot completely eliminate blind spots. May not detect every object and does not warn of moving objects. Always check surroundings before moving vehicle. Not a substitute for proper backing procedures. Always turn to check what is behind you before backing up. ⁹The Blind Spot Warning System is not a substitute for proper lane change procedures. The system will not prevent contact with other vehicles or accidents or detect every vehicle or object around you. ¹⁰Never program while driving. GPS mapping may not be detailed in all areas or reflect current road regulations. ¹¹The Advanced Climate Control System with Plasmacluster[®] air purifier helps scrub the air in the vehicle's interior. The system senses exterior odors, suppresses unpleasant interior odors, stops the inflow of external odors and helps keep the cabin smelling fresh, but does not always eliminate odors. Bose[®] is a registered trademark of The Bose Corporation. HomeLink[®] is a registered trademark of Johnson Controls Technology Company. Plasmacluster[®] is a registered trademark of Sharp Corporation.

SPECIFICATIONS

Engine	S	SV	SL	LE
VQ35DE – 3.5-liter DOHC 24-valve V6 engine ¹	■		■	■
Horsepower – 260 hp @ 6,000 rpm				
Torque – 240 lb-ft @ 4,400 rpm				
Continuously Variable Valve Timing Control System (CVTCS)	■	■		■
Nissan Direct Ignition System with double-tipped iridium spark plugs	■	■	■	■
Electronic drive-by-wire throttle	■	■	■	■

Drivetrain	S	SV	SL	LE
Front engine/front-wheel drive	■	■	■	■
Xtronic CVT [®] (Continuously Variable Transmission)	■	■	■	■

Brakes	S	SV	SL	LE
4-wheel vented disc brakes	■	■	■	■
Anti-lock Braking System (ABS)	■	■	■	■
Electronic Brake force Distribution (EBD)	■	■	■	■
Brake Assist	■	■	■	■

Suspension/Steering	S	SV	SL	LE
Independent strut front suspension	■	■	■	■
Multi-link independent rear suspension	■	■	■	■
Front stabilizer bar	■	■	■	■
Vehicle speed-sensitive electric power-assisted rack-and-pinion steering	■	■	■	■

Wheels/Tires	S	SV	SL	LE
16" x 6.5" steel wheels with bolt-on wheel covers	■			
16" x 7" aluminum-alloy wheels		■		
18" x 7" aluminum-alloy wheels			■	■
P225/65TR16 all-season tires	■	■		
P235/55TR18 all-season tires			■	■

Exterior Features	S	SV	SL	LE
Smart Auto Headlights			■	■
High Intensity Discharge (HID) xenon headlights			■	■
Fog lights		■	■	■
Dual sliding rear doors	■	■	■	■
One-touch power sliding doors		■	■	■
One-touch power liftgate			■	■
Roof rails			■	■
Dual opening glass moonroof			■	■
Power outside mirrors	■	■		
Power outside mirrors with turn signal indicators			■	■
Heated outside mirrors			■	■
Automatic tilt-in-reverse outside mirrors			■	■
Front UV-reducing solar glass and rear privacy glass		■	■	■
Chrome grille and license plate finisher accents		■	■	■
Side sill spoilers with chrome accents			■	■

- Standard
- Part of Leather Package
- Part of DVD Entertainment System Package

Comfort/Convenience	S	SV	SL	LE
Around View [®] Monitor				■
Blind Spot Warning System				■
RearView Monitor		■	■	■
Nissan Intelligent Key [®] with Push Button Ignition	■	■	■	■
Remote keyless entry with remote front windows down		■	■	■
Nissan Hard Drive Navigation System with 8-inch color touch-screen monitor and voice recognition				■
NavTraffic and NavWeather provided by SiriusXM ²				■
Zagat Survey [®] restaurant reviews				■
Bluetooth [®] Hands-free Phone System		■	■	■
HomeLink [®] Universal Transceiver			■	■
Auto-dimming interior rearview mirror		■	■	■
Digital compass			■	■
Air conditioning	■	■	■	■
Tri-zone Automatic Temperature Control (ATC)		■	■	■
Advanced Climate Control System			■	■
In-cabin charcoal microfilter	■	■	■	■
Polyphenol microfilter				■
Second- and third-row air conditioning/heater vents with second-row controls	■	■	■	■
Power door locks with auto-locking feature	■	■	■	■
Power front windows with driver's one-touch auto-up/down	■			
Power front windows with one-touch auto-up/down		■	■	■
Power second-row side windows	■	■	■	■
Second- and third-row manual side sunshades				■
Tilt and telescoping steering column	■	■	■	■
Cruise control with illuminated steering wheel-mounted switches	■	■	■	■
Variable intermittent speed-sensitive windshield wipers and rear wiper	■	■	■	■
Dual front map lights, dual second- and dual third-row reading lights	■	■	■	■
Dual illuminated visor vanity mirrors with extenders	■	■	■	■
Conversation mirror		■	■	■
Sunglasses storage	■	■	■	■
Mood lighting	■	■	■	■
First- and second-row height-adjustable seat belts	■	■	■	■
Two 12-volt DC power outlets	■	■	■	■
120-volt AC power outlet		■	■	■
Retained accessory power and battery saver	■	■	■	■
First-row center console with cup holders	■	■	■	■
Removable second-row center console with cup holders	■	■	■	■
First- and third-row seatback grocery bag hooks	■	■	■	■
Passenger seatback pocket			■	■
Driver seatback pocket		■	■	■
Permanent rear storage well	■	■	■	■

- Part of Dual Opening Glass Moonroof Package
- Part of Bose[®] Audio System Package

Seating/Appointments	S	SV	SL	LE
6-way manual driver's seat with center armrest	■	■		
8-way power driver's seat with center armrest		■		■
4-way power front-passenger's seat				■
Driver's seat power adjustable lumbar support		■		■
Driver's memory seat system (two presets, remote-activated)		■		■
Quick Comfort heated front seats		■		■
Second-row captain's chairs (sliding and reclining) with third-row easy-entry feature	■	■	■	■
Fold-flat second-row captain's chairs	■	■	■	■
60/40 Split fold-flat third-row bench seat	■	■	■	■
Quick Release third-row folding seatbacks	■	■	■	■
Power-return third-row seat				■
Cloth seat trim	■	■		
Leather-appointed seats		■		■
Leather-wrapped steering wheel		■		■
Leather-wrapped shift knob		■		■
Wood-tone trim on dashboard and front door panels	■	■	■	■
Wood-tone trim on sliding door panels	■	■	■	■

Audio/Entertainment	S	SV	SL	LE
AM/FM/CD audio system	■			
Premium AM/FM/CD audio system with 4.3" color display		■	■	
Bose [®] audio system with AM/FM/CD SiriusXM Satellite Radio ²			■	■
DVD Entertainment System with 7-inch color in-dash monitor (8-inch on LE)		■	■	■
Second-row 11.0" WVGA DVD monitor with auto-dimming function		■	■	■
Dual Media Playback capability		■	■	■
Two wireless headsets and remote control		■	■	■
Auxiliary audio/video input jacks		■	■	■
MP3/WMA CD playback capability	■	■	■	■
Radio Data System (RDS)		■	■	■
Speed-sensitive volume control		■	■	■
Auxiliary audio input jack	■	■	■	■
USB connection port for iPod [®] interface and other compatible devices		■	■	■
Illuminated steering wheel-mounted audio controls		■	■	■
Four speakers	■			
Six speakers		■	■	
Thirteen Speakers			■	■

Safety/Security	S	SV	SL	LE
Nissan Advanced Air Bag System with dual-stage supplemental front air bags, seat belt sensors and occupant-classification sensor	■	■	■	■
Driver and front-passenger seat-mounted side-impact supplemental air bags	■	■	■	■

Safety/Security (continued)	S	SV	SL	LE
Roof-mounted curtain side-impact supplemental air bags for first-, second- and third-row out-board occupant head protection	■	■	■	■
Vehicle Dynamic Control (VDC) with Traction Control System (TCS)	■	■	■	■
3-point ALR/ELR passenger seat belt system (ELR for driver)	■	■	■	■
Front seat belts with pre-tensioners and load limiters	■	■	■	■
Front-seat Active Head Restraints	■	■	■	■
Height-adjustable head restraints for all positions	■	■	■	■
LATCH System (Lower Anchors and Tethers for Children)	■	■	■	■
Child-safety sliding rear door locks	■	■	■	■
Zone Body construction with front and rear crumple zones and hood-buckling creases	■	■	■	■
Energy-absorbing steering column	■	■	■	■
High-strength steel side-door guard beams	■	■	■	■
Tire Pressure Monitoring System (TPMS) with Easy-Fill Tire Alert	■	■	■	■
Nissan Vehicle Immobilizer System	■	■	■	■
Vehicle Security System	■	■	■	■

PACKAGES

■ SV Leather Package
Leather-appointed seats and door trim
Quick Comfort heated front seats
8-way power driver's seat with center armrest
Driver's seat power adjustable lumbar support
Leather-wrapped shift knob

■ DVD Entertainment System Package (SV, SL)
DVD Entertainment System with 7-inch color in-dash monitor
Second-row 11.0" WVGA DVD monitor with auto-dimming function
Auxiliary audio/video input jacks
Dual Media Playback capability
Two wireless headsets and remote control
120-volt AC power outlet
This package replaces standard auxiliary audio input jack.

■ Dual Opening Glass Moonroof Package (SL, LE)
This package requires DVD Entertainment System Package on SL models.

■ Bose [®] Audio System Package
Bose [®] audio system with AM/FM/CD and 13 speakers
This package requires Dual Opening Glass Moonroof Package and DVD Entertainment System Package.

¹Use regular unleaded fuel with 87 octane. For maximum power, use premium fuel. ²Required SiriusXM Satellite Radio, NavTraffic and NavWeather subscriptions sold separately after trial period. Installation costs, one-time activation fee, other fees and taxes will apply. NavTraffic available in select markets. Services available only to those 18 or older in the 48 contiguous states and D.C. Fees and programming subject to change. Subscriptions governed by Customer Agreement available at siriusxm.com. ©2012 Sirius XM Radio Inc. Sirius, XM and all related marks and logos are trademarks of Sirius XM Radio Inc. Bose[®] is a registered trademark of The Bose Corporation. The Bluetooth[®] word mark and logos are owned by Bluetooth SIG, Inc., and any use of such marks by Nissan is under license. HomeLink[®] is a registered trademark of Johnson Controls Technology Company. Zagat Survey[®] is a registered trademark of Zagat Survey, LLC Ltd.

This brochure is intended for general descriptive and informational purposes only. It is subject to change and does not constitute an offer, representation or warranty (express or implied) by Nissan North America, Inc. Interested parties should confirm the accuracy of any information in this brochure as it relates to a vehicle directly with Nissan North America, Inc., before relying on it to make a purchase decision. Nissan North America, Inc., reserves the right to make changes, at any time, without prior notice, in prices, colors, materials, equipment, specifications, and models and to discontinue models or equipment. Due to continuous product development and other pre- and post-production factors, actual vehicle, materials and specifications may vary from this brochure. Some vehicles shown with optional equipment. See the actual vehicle for complete accuracy. Availability and delivery times for particular models or equipment may vary. Specifications, options and accessories may differ in Hawaii, U.S. territories and other countries. For additional information on availability, options or accessories, see your Nissan dealer or contact Nissan North America, Inc.

DIMENSIONS/CAPACITIES/WEIGHTS/MPG

Dimensions – Inches

Exterior	
Wheelbase	118.1
Overall length	200.8
Overall width	77.6
Overall height	71.5/73.0 with roof rails
Track width (front/rear)	
16" Wheels	68.1/68.1
18" Wheels	67.7/67.7
Step-in height	
16" Wheels	15.7
18" Wheels	16.1

Interior (front/2nd row/3rd row)	
Head room	42.1/41.6/40.0 without moonroof 40.9/39.9/38.0 with moonroof
Leg room	43.8/36.7/40.5
Hip room	57.3/66.0/49.6
Shoulder room	64.5/63.2/61.2

Capacities

Seating capacity	7
Interior passenger volume (cu. ft.)	177.8 without moonroof 170.9 with moonroof
Interior volume index (cu. ft.)	214.8 without moonroof
Cargo volume (cu. ft.)	
Permanent rear storage well (S, SV, SL)	11.4
Permanent rear storage well with Bose® audio system (SL, LE)	6.7
All seats in user positions	25.7
Second row upright, third row folded flat	63.6
Second row folded, third row folded flat	108.4
Fuel tank (gals.)	20.0

Curb Weights – Lbs.

	S	SV	SL	LE
Base total	4,371	4,402	4,503	4,568

EPA Fuel Economy Estimates

	S	SV	SL	LE
City/Hwy MPG	19/24	19/24	19/24	19/24

Actual mileage may vary with driving conditions – use for comparison only. 2012 EPA fuel economy estimates shown. 2013 EPA estimates not available at time of printing.

Buying and owning a Nissan is like driving one: quick, convenient, confidence-inspiring.



Nissan Motor Acceptance Corporation. Whether you're buying or leasing, you'll find attractive rates and flexible terms to make your purchase more accessible.

New Vehicle Limited Warranties. Protection for your new Nissan includes 3-year/36,000-mile basic coverage and 5-year/60,000-mile powertrain coverage. Terms, conditions and exclusions apply. See Warranty Information Booklet for complete details.

Security+Plus.* For additional peace of mind, a variety of extended service plans lets you tailor the coverage to your driving habits.

Maintenance+Plus.* This extended plan ensures your Nissan will receive up to 17 different services and over 33 different inspection items at each visit, using the most up-to-date diagnostic equipment available.

Genuine Nissan Parts. When it comes time for service, any necessary replacement parts will be made using Genuine Nissan new or remanufactured parts, or Nissan-approved parts. And they're the only parts to carry Nissan's factory-backed limited warranty.

Nissan's philosophy toward the environment, "Seeking a symbiosis of people, vehicles and nature," describes our ideal for a sustainable mobile society, now and in the future. We launched the Nissan Green Program with specific objectives to realize this goal, and we are pursuing it energetically. For more information, log on to NissanUSA.com/green



FABRIC SELECTIONS



GRAY CLOTH

SV model shown



BEIGE CLOTH

SV model shown



GRAY LEATHER

SL model shown



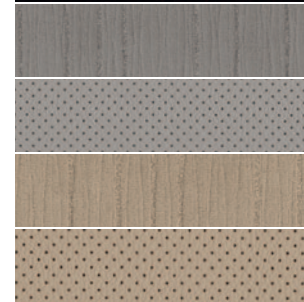
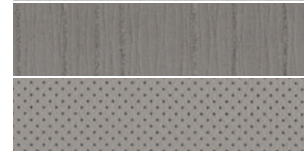
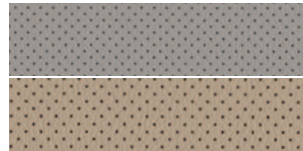
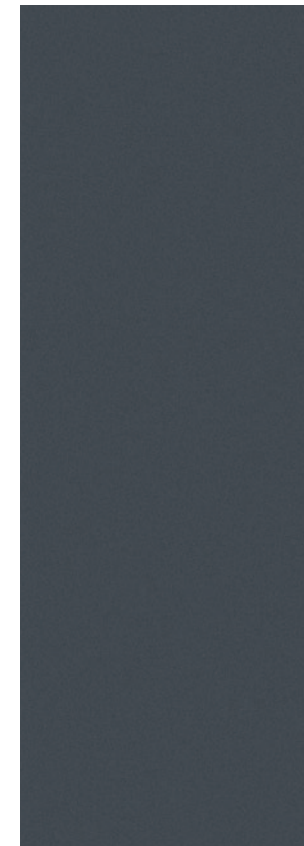
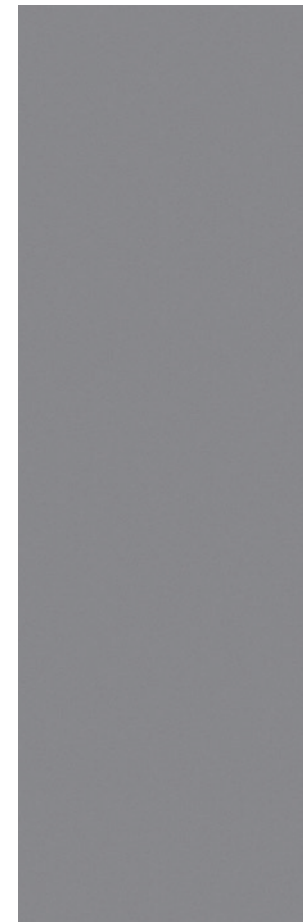
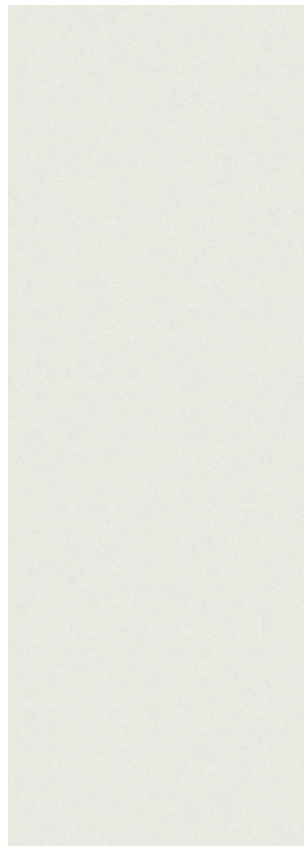
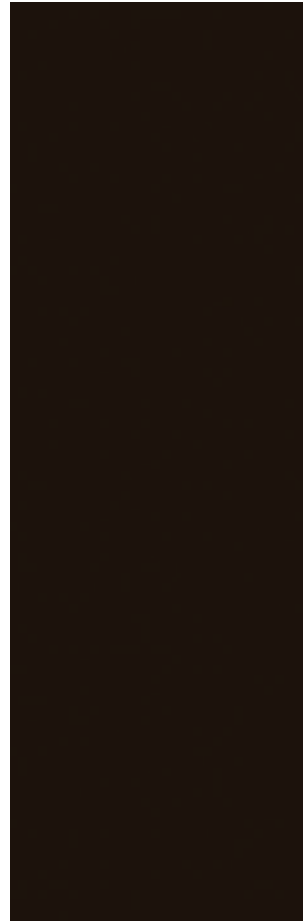
BEIGE LEATHER

SL model shown

PAINT SELECTIONS

PICK A COLOR, ANY COLOR.

You've decided which Quest you want, now here comes the best part: deciding what it's going to look like. Choose your favorite color and then pick from the available interior options based on the model of your choice.



Dark Mahogany GAE

Pearl White QAB

Brilliant Silver K23

Super Black KH3

Titanium Beige KAY

Platinum Graphite K51

Twilight Gray FAA

■ Standard
 Part of Leather Package

Nissan has taken care to ensure that the color swatches presented here are the closest possible representations of actual vehicle colors. Swatches may vary slightly due to the printing process and whether viewed in daylight, fluorescent or incandescent light. Please see the actual colors at your local Nissan dealer.

	S	SV	SL	LE
GRAY CLOTH				
GRAY LEATHER			■	■
BEIGE CLOTH				
BEIGE LEATHER			■	■

	S	SV	SL	LE
GRAY CLOTH	■	■		
GRAY LEATHER		<input type="checkbox"/>	■	■
BEIGE CLOTH				
BEIGE LEATHER			■	■

	S	SV	SL	LE
GRAY CLOTH	■	■		
GRAY LEATHER		<input type="checkbox"/>	■	■
BEIGE CLOTH				
BEIGE LEATHER				

	S	SV	SL	LE
GRAY CLOTH	■	■		
GRAY LEATHER		<input type="checkbox"/>	■	■
BEIGE CLOTH				
BEIGE LEATHER		<input type="checkbox"/>	■	■

	S	SV	SL	LE
GRAY CLOTH	■	■		
GRAY LEATHER		<input type="checkbox"/>	■	■
BEIGE CLOTH				
BEIGE LEATHER		<input type="checkbox"/>	■	■

	S	SV	SL	LE
GRAY CLOTH	■	■		
GRAY LEATHER		<input type="checkbox"/>	■	■
BEIGE CLOTH				
BEIGE LEATHER				

	S	SV	SL	LE
GRAY CLOTH	■	■		
GRAY LEATHER		<input type="checkbox"/>	■	■
BEIGE CLOTH				
BEIGE LEATHER		<input type="checkbox"/>	■	■

Nissan. Innovation that excites.™

NISSAN QUEST®

Shouldn't you drive something you love? Absolutely. And that's what inspires our innovation. We look at every part of your drive and ask how can we make this better, smarter and more fun. So when you get in your new Quest, you'll feel how exciting the answers can be:

A revolution in seating.

Quest's 2nd-row seats fold flat – no removal required. And the 3rd row folds forward, for a permanent cargo well behind the 3rd row – no other minivan does that.

Blind Spot Warning System.

An extra pair of eyes never hurts. Quest's available system warns you if another vehicle is detected in the blind spot area on either side.¹

Easy-Fill Tire Alert.

No guesswork involved. Just fill the tire with air until a friendly beep of the horn signals you've reached the correct pressure.²

One-touch power sliding doors.

Hands full? Quest's available one-touch power sliding doors open easily with the touch of a finger.

Los folletos de Nissan también están disponibles en español. Para descargar el PDF, visita:

NissanUSA.com/folletos-espanol

And follow Nissan on:



SHIFT_

visit **NissanUSA.com/quest**

¹The Blind Spot Warning System is not a substitute for proper lane change procedures. The system will not prevent contact with other vehicles or accidents or detect every vehicle or object around you. ²Vehicle must be on for Easy-Fill Tire Alert to operate. Facebook® is a registered trademark of Facebook, Inc. YouTube® is a registered trademark of Google Inc.