



Porsche Cars North America, Inc.
 One Porsche Drive
 Atlanta, Georgia 30354-1654

Dr. Ing. h.c. F. Porsche AG is the owner of numerous trademarks, both registered and unregistered, including without limitation the Porsche Crest®, Porsche®, Boxster®, Carrera®, Cayenne®, Cayman®, Macan®, 718®, Panamera®, Speedster®, Spyder®, Tiptronic®, VarioCam®, PCM®, PDK®, 911®, RS®, 4S®, 918 Spyder®, FOUR, UNCOMPROMISED®, and the model numbers and distinctive shapes of the Porsche automobiles such as, the federally registered 911 and Boxster automobiles. The third party trademarks contained herein are the properties of their respective owners. Porsche Cars North America, Inc. believes the specifications to be correct at the time of printing. However, specifications, standard equipment and options are subject to change without notice. Some options may be unavailable when a car is built. Some vehicles may be shown with non-U.S. equipment. Please ask your authorized Porsche dealer for advice concerning the current availability of options and verify the optional equipment that you ordered. Porsche recommends seat belt usage and observance of traffic laws at all times.

All fuel consumption and emissions data contained herein are derived from U.S. tests and were accurate at time of printing. Actual results may vary.

© 2016 Porsche Cars North America, Inc.

Printed in the USA

MKT 001 002 34

porscheusa.com

1-800-PORSCHE



The Porsche Macan

MKT 001 002 34



The Porsche Macan
 Life, intensified

Contents

Life, intensified	2	Multitasking	64
Concept	4	Lights and visibility	66
Design	6	Comfort	70
Macan principle	14	Assistance systems	92
Macan Turbo	18	Transport	96
Macan GTS	24		
Macan S	28	Power of imagination	100
Macan	32	Personalization	103
		Porsche Exclusive	104
Dynamics	36	Color range	112
Drive	38	Options	120
Transmission	44	Porsche Tequipment	138
Chassis	46	Porsche Car Configurator	140
		Factory collection	141
Instinct	54		
Safety	56	Panorama	142
Environment	60		
		Technical data	144
		Index	148

Models shown (left to right) | Macan GTS in Carmine Red, Macan in Rhodium Silver Metallic, Macan S in Sapphire Blue Metallic, Macan Turbo in Jet Black Metallic





Life, intensified

Are we simply bystanders or do we take the plunge?
Are we driven by obligation or passion?
Do we lean back and relax or do we want to feel the power of acceleration?

The answer is simple. That's why we create sports cars.

Take the everyday out of every day.

Macan concept.

Those who prefer to blaze a trail of their own don't need to follow the lead of others. We're thinking specifically about cars known as compact SUVs, characterized by five doors, five seats, all-wheel drive—and, of course, a higher sitting position. But aren't they lacking a certain something?

Something that adds a little life, lets us enjoy a more intimate relationship with the road and delivers great driving pleasure. A concept that boasts plenty of space for hobbies, leisure and sport. But no room for compromise. Compact, concentrated and intensive, but still powerful. Practical, but never ordinary.

It is by these standards that we created the Macan, and saw it emerge with four distinct guises. Each one a sports car. Each one unmistakable in its own segment. Each one a genuine Porsche—from design and driving dynamics to equipment specification. From our dynamic entry-level model to the ultra sporty S variant and the striking GTS model to the Turbo, which sets performance standards in its vehicle class.

All Macan models were developed, tested and built in keeping with the Porsche philosophy. That's where we take sporty style and performance from the racetrack and inject them into everyday driving. We make the Macan as efficient as possible—and of course, comfortable.

No efforts were spared. Our engineers achieved their development objective: the first sports car among compact SUVs.

The Macan—built for an intensive life in which the thirst for experience and thrills are ever present, and in which new challenges are a permanent driving force. Built for a life that refuses to be cut-short by conventions and feels all the more authentic for it. Direct and intimate.

A sports car that gives us what we're looking for, even in our everyday life: that feeling of being alive.

The Porsche Macan. Life, intensified.



**We could etch character in stone.
But we prefer more dynamic forms of expression.**

Exterior design.

What makes a Porsche a Porsche? The fact that it is instantly recognizable, some would answer. Others might say it's the face that stands out from the crowd. Our engineers would say that it's the Porsche DNA.

It's what gives every Porsche its own unmistakable character, and makes the Macan what it is, too. An extraordinary sports car.

That's also proven by the most recent addition to the family: the new 4C Macan. This latest model lines up on the starting grid looking muscular, sharp and imposing. Bi-Xenon™ headlights in black and tinted LED taillights catch the eye, attracting every gaze. And the Sport exhaust system catches the ear, emitting a particularly intense and resonant sound.

The SportDesign package, fitted as standard, underscores the sporty impression further still. The rear fascia painted in black is a case in point, standard for GTS (optional for all other Macan models). The side skirts also lend a dynamic appearance. Another standard feature: the hi-gloss black exterior package. It ensures an even more commanding presence. And adds accents of its own.

Accents are also added by the new Turbo exterior package¹. Only available on the Macan Turbo, it's made for anyone who demands nothing less than exclusivity from life. The exclusive 21-inch 911 Turbo Design wheels—highly polished on the outside, black (high-gloss) paint finish on the inside—feature wheel centers with full-color Porsche Crest. And the LED headlights, including Porsche Dynamic Light System Plus (PDLS Plus), catch the eye both day and night.

SportDesign exterior mirrors, air-intake grilles painted in black (high-gloss) and side blades in black (high-gloss) also create stunning design accents.

The face of every model in the Macan range displays the dominant sporty genes of their hereditary line. Markers include the characteristic headlights recessed in the hood. The large, imposing air intakes of the front fascia are just waiting to inhale life. Every single second.

The hood stretches through to the wheel arches. This lends the front a broad and powerful presence and reminds us of the legendary Porsche 917, which won countless victories in the early 1970s—including at 24 Hours of Le Mans, where it held the distance record for 39 years.

The side profile is typically Porsche. From this angle, every muscle appears flexed—like a predator ready to pounce.

¹ You will find further information on the new Turbo exterior package on page 22.



The roof line slopes distinctively down towards the rear, drawing the customary sports car contour that promises excellent aerodynamics. Our designers call it the Porsche flyline.

A visual highlight of the Macan is the side blades. Not only do they set a sporty accent, their design pays homage to the 918 Spyder. They make the proportions of the doors appear narrower and the flanks seem much sleeker and sportier. Side blades are available with a paint finish in matte black (Macan GTS only), Lava Black, in the exterior color of the vehicle or—for a particularly exclusive statement—in Carbon Fiber. A black (high-gloss) finish is reserved exclusively for the Turbo exterior package.

In sizes of up to 21 inches, the wheels of the Macan are equally eye-catching. The particular Macan model that you see before you is recognizable by its brake calipers: black on the Macan, silver-colored on the Macan S and red on the GTS and Turbo. Typically Porsche.

The classic Porsche sports car design reveals itself at the rear: slender at the top, widening into broad shoulders above the rear wheels—a tribute to the 911. The styling of the rear hatch gives the rear end a particularly harmonious form. For convenience, the rear hatch on all Macan models is equipped with an automatic powerlift function. The slimline LED taillights have three-dimensional proportions, which gives them an extraordinary appearance of depth—and captures your attention. The overall effect is to make the Macan look low, wide, and thus intimate with the road—like any genuine Porsche. After all, a muscle-toned body is meant to be admired from the rear as well as the front.

Of course, our engineers took great care to ensure that the interior of the Macan is just as intensive with sports car sensations.



Macan Turbo with Turbo exterior package



Macan Turbo with Turbo exterior package: tinted LED taillights



Macan Turbo with Turbo exterior package: side blades in black (high-gloss)



Wind tunnel in Porsche Development Center, Weissach

True beauty is more than just skin deep.

Interior design.

As a creator of sports cars, we know that driver and car must form a single entity. As such, you do not simply sit in the Macan—the ergonomic architecture integrates you into the vehicle. The three-dimensional arrangement of the controls lends the interior a cockpit-style layout. In typical Macan fashion, the sporty front seats convey a sense of height above the road but a firm connection with it.

This feeling can be experienced in an even more exclusive way—with the new Turbo interior package¹, available only for the Macan Turbo and in a choice of two contrasting colors: Rhodium Silver and Garnet Red. Eye-catching through and through, the black full-leather interior features Alcantara® on the seat centers, center console and door armrests.

The front and outer rear seat belts, the tachometer, the deviated stitching and the “Turbo” logo embroidered on the headrests are finished in the contrasting color. So it goes to show once again: the Macan Turbo not only looks outstanding on the road—it is the epitome of exceptional exclusivity.

Profound sportiness is a question of inner attitude, and this is answered emphatically by the new GTS interior package—reserved exclusively for the Macan GTS. Stitching and seat belts, the tachometer and the “GTS” logo in Carmine Red or Rhodium Silver lend the interior an even more dynamic tone. In addition, selected items upholstered, as standard, in Alcantara® highlight only too clearly the sporty genes that the Macan GTS has inherited.

The instrument panel, with its cluster of three dials, is always in view—just like in a classic sports car. In the center: the tachometer. To the right: the 4.8-inch color screen. This displays a range of useful information as well as a host of new functions introduced with the latest version of Porsche Communication Management (PCM) system.

Thanks to the ascending center console—a typical feature of a sports car—you don’t have very far to reach from the steering wheel to the PDK gear selector and most important vehicle functions. The ignition switch, as ever, is closest to the door—typically Porsche.

¹ You will find further information on the new Turbo interior package on page 22.



The multifunction three-spoke Sport steering wheel is inspired by the design of the 918 Spyder—and an established motorsport principle: keep your hands on the wheel. Two manually operated and ergonomically positioned gearshift paddles enable fast and sporty gear changes.

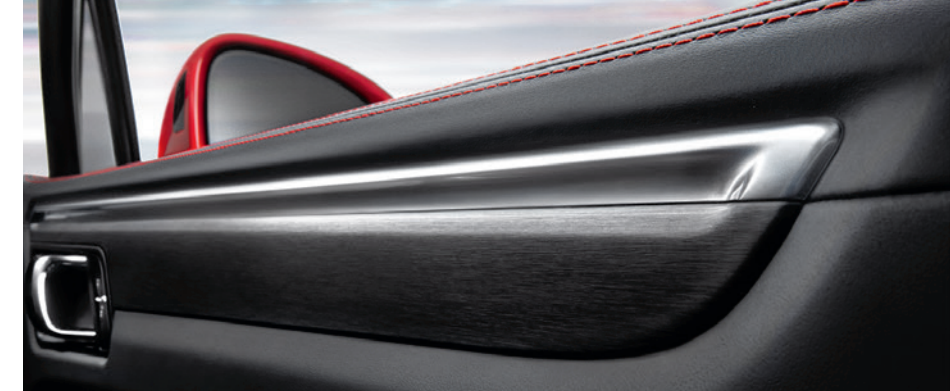
Sound and navigation systems follow the ergonomics philosophy. Equipped with a high-resolution color touchscreen, they offer intuitive ease of use.

With the versatile three-way split-folding rear bench seat—ratio 40:20:40—you can adapt the Macan perfectly to your needs.

On the subject of customization, you can make the interior even more individual thanks to a diverse selection of options. The palette of materials and finishes ranges from classic to sporty. For an exclusive ambience, you could have the interior of your Macan lined in leather in various ways or have the finish refined with the elegant Dark Walnut wood. For a theme that places the emphasis on sport, choose Alcantara®, Carbon Fiber or Brushed Aluminum. However you personalize the interior of your Macan, remember one thing: there are no limits.



Turbo interior package with contrasting items in Rhodium Silver (exclusive to the Macan Turbo)



Interior in black with Black Brushed Aluminum finish (exclusive to the Macan GTS)



Interior in black with Brushed Aluminum finish



Interior in Espresso with Dark Walnut finish

**Where it comes from, valuable seconds count.
Where it wants to go, valuable moments matter.**

Macan principle.

Our home is the racetrack. It's where we fight for every tenth of a second and every ounce in weight. The knowledge we gain is streamed into our series production models.

We've known since 1948 that nobody wins on horsepower alone, whether it's on the racetrack or in everyday life. Our main development objective is to create sports cars that stir emotions. By that we mean the driving feel that only a genuine Porsche can provide. With considerable agility and dynamics, but always with responsibility in mind. We achieve these goals with highly efficient engines, outstanding driving features and the relentless will to push boundaries—upwards.

We want something to happen—on the asphalt certainly, but first and foremost just beneath the skin. That's why every member of the Macan family was developed to fulfill one principle in particular: to bring the urban way of life to the fast lane and to provide a high level of sporty performance to everyday driving. Job done.

Let's begin at the heart. All engines are characterized not only by their impressive performance and high efficiency but, above all, by the typical resonance of their sound, making a particularly strong impression in conjunction with the optional Sport exhaust system. The power of the new Macan models is transmitted to the road by active all-wheel drive.

This system sets standards for driving dynamics and stability. Staggered wheel sizing front to rear is standard—as seen on the 911—to deliver even greater traction and agility.



Acoustic test chamber in Porsche Development Center, Weissach

Fitted as standard, the 7-speed Porsche Doppelkupplung (PDK) lets you experience motorsport-style gear changes, which take place in milliseconds and with no interruption in the flow of power. The system also features a coasting mode, which reduces fuel consumption and emissions where the driving situation allows. To this end, the Auto Start Stop function, intelligent thermal management and many more efficiency-enhancing measures make a decisive contribution.

The steel spring suspension, standard, helps to provide the driving precision and performance typical of any Porsche. As an option (standard in the Macan Turbo and Macan GTS), it can be upgraded to include optional Porsche Active Suspension Management (PASM). At the push of a button, the shock absorbers respond even more precisely to the current driving style. Air suspension, standard on the Macan GTS is available for even greater dynamic performance and a high level of ride comfort. With this suspension, the Macan GTS sits 10 mm lower than that of the Macan S. The three-position ride-height

adjustment capability enables you to adapt it optimally to the driving situation.

Optional Porsche Torque Vectoring Plus (PTV Plus) lets you feel the Macan principle in every corner—and in a particularly intense way. Operating in conjunction with an electronically controlled rear differential lock, the system works by varying the torque distribution to the rear wheels and thereby significantly further improves handling and steering precision. It also increases the agility of the car when it attacks the corner.

Naturally, active safety also follows the Macan principle—and, in doing so, fulfills the requirements of a sports car. Porsche Stability Management (PSM) helps to ensure stability at the limits of sporty performance. Typically Porsche, the brakes set standards for deceleration.

Optional driver assistance systems relieve your workload so that you can have more fun. Adaptive cruise control, including Porsche Active Safe (PAS), regulates the speed of your vehicle in line with the speed

of the vehicle in front. Lane Change Assist monitors your blind spots, while Lane Keep Assist tracks your car's distance to divider line markings on the road.

Intensive living can also be measured in bits and bytes—for example, with the new version of Porsche Communication Management (PCM) system with optional navigation module. Additionally, the optional Porsche Connect Plus module offers wireless Internet access and online navigation, featuring real-time traffic information in the map view of the navigation system, (including Google® Earth and Google® Street View¹). The module also comes with Apple CarPlay™, which you can use to access the apps of your iPhone® conveniently from the driver's seat—using PCM or the optional voice control system.

So you see: being highly networked can also be the principle of a sports car. That's because, for us, staying true to one's principles is essential. The principle of power above all.

¹ The services real-time traffic information, Google® Street View and Google® Earth are offered free of charge for 12 months. Please visit www.porscheusa.com/connect if you wish to continue usage (subject to charge) after this period. A data-enabled SIM card and a separate, valid subscription to a mobile network provider (subject to charge) are required for use of these services and wireless Internet access.



Power package as standard.

Macan Turbo.

Must intensity really have any limits? In the areas of design, performance, and exclusivity, we have at the very least redefined them.

The distinctly muscular front fascia, with the side airblades of the conspicuously large cooling air intakes, is found nowhere else but on the Macan Turbo. It's a visual promise of thrilling performance. Bi-Xenon™ headlights with dynamic cornering lights provide optimal illumination of the road. These are supplemented by the stunning four-point LED daytime running lights.

The Macan Turbo also stands out thanks to its lower front spoiler, inspired by the 918 Spyder. The turn signals and position lights have been integrated in such a way that they appear to hover inside the side

air intakes. Below them are the LEDs of the fog lights. The side blades are painted in the exterior color of the body. SportDesign side skirts underline the powerful profile. Another typical feature of the Turbo is the "Macan Turbo" logo on the rear hatch.

Impressively, the 3.6-liter twin-turbo V6 engine delivers an enormous power output of 400 horsepower. The sprint from 0 to 60 mph is completed in a mere 4.6 seconds. Top track speed is 164 mph. Those aren't simply bare numbers, but a compelling statement in terms of performance—and efficiency.

19-inch Macan Turbo wheels are fitted as standard. Behind these are the red brake calipers of the large-diameter brakes. The

steel spring suspension is equipped, as standard, with Porsche Active Suspension Management (PASM), which enhances both sporty performance and ride comfort.

As standard, the Macan Turbo comes with the leather package, which emphasizes the exquisite quality of the interior. Another highlight is the new version of Porsche Communication Management (PCM) system with navigation module and a large touchscreen. It comes as standard, just like the Bose® Surround Sound System. Offering a total output of 665 watts and with 14 loudspeakers, including active subwoofer, it delivers a special listening experience.

The Macan Turbo. Performance in its most intense form.



Highlights of the Macan Turbo

- Sport button
- Porsche Doppelkupplung (PDK)
- Steel spring suspension with Porsche Active Suspension Management (PASM)
- 19-inch Macan Turbo wheels
- Side blades painted in exterior color
- Twin dual-tube tailpipes outside left and right with design specific to Macan Turbo
- Bi-Xenon™ headlights with Porsche Dynamic Light System (PDLS)
- LED fog lights
- Electrically folding exterior mirrors
- Three-zone automatic climate control
- 18-way Adaptive Sport Seats with comfort memory package
- Lane Departure Warning
- Brushed Aluminum interior package
- Leather package
- Roof lining in Alcantara®
- Multifunction Sport steering wheel with gearshift paddles
- New Porsche Communication Management (PCM) system with navigation module
- Bose® Surround Sound System
- Automatic rear hatch
- ParkAssist (front and rear) with reversing camera

- Power Steering Plus
- Privacy glass

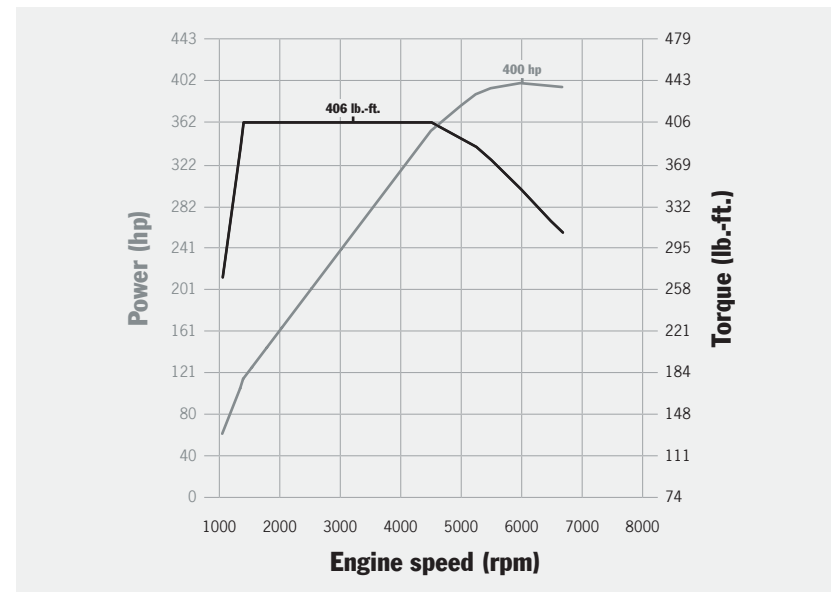
Selection of personalization options

- Air suspension with Porsche Active Suspension Management (PASM)
- Porsche Torque Vectoring Plus (PTV Plus)
- Turbo exterior package
- Turbo interior package in Rhodium Silver or Garnet Red
- Porsche Ceramic Composite Brake (PCCB)
- Sport Chrono Package
- Wheels up to 21 inches
- LED headlights with Porsche Dynamic Light System Plus (PDLS Plus)
- Panoramic roof system
- Seat ventilation (front)
- Adaptive cruise control with Porsche Active Safe (PAS)
- Leather interior
- Burmester® High-End Surround Sound System
- Connect Plus module with telephone module, wireless Internet access, real-time traffic information, Apple CarPlay™, Google® Earth, and Google® Street View

Drive concept

- 3.6-liter twin-turbo V6 engine
- 400 horsepower at 6000 rpm
- Maximum torque: 406 lb.-ft. at 1350–4500 rpm
- Acceleration from 0 to 60 mph: 4.6 seconds
- Top track speed: 164 mph
- Direct fuel injection (DFI)
- VarioCam Plus
- Auto Start Stop function

For more on personalization, please refer to page 103 onwards.



Macan Turbo: 406 lb.-ft. at 1350–4500 rpm, 400 horsepower at 6000 rpm



3.6-liter twin-turbo V6 engine

Life can give you more than 100 percent.

The new Macan Turbo packages.

Life is exactly what you make it. In your free time. On the road. And with your Macan. For us, there is no time for compromise.

Turbo exterior package

To command a strong presence, it's crucial to have a persuasive demeanor, superior to all else. With the new Turbo exterior package, the Macan hits the road equipped with exclusive 21-inch 911 Turbo Design wheels—highly polished on the outside, black (high-gloss) paint finish on the inside—including wheel centers with full-color Porsche Crest.

The LED headlights with Porsche Dynamic Light System Plus (PDLS Plus) and tinted LED taillights draw gazes whatever the time of day.

Other distinguishing design options include SportDesign exterior mirrors in the exterior color of the vehicle, or the side blades, side window trims and air intake grilles finished in black (high-gloss).

Other head-turners are the rear fascia in black (high-gloss) and the rear spoiler in exterior color.

The Sport exhaust system, featuring Sport tailpipes in black, will lend your Macan Turbo with an even more powerful sound.

Turbo interior package

When you enhance beauty, you eventually elicit exclusivity. That's proven by the new Turbo interior package in Garnet Red or Rhodium Silver. The full leather interior in black, with the use of Alcantara® on the seat centers, center console armrest and door armrests, emphasizes this stunning appearance further still. And it underlines something else: we take beauty literally. The two available contrasting colors of Rhodium Silver and Garnet Red capture the attention and create visual accents—for example, on the headrests with “Turbo” logo, the seat belts and all the deviated stitching. The exquisite design is completed by the Carbon Fiber interior package and illuminated door sill guards,

featuring the “Macan Turbo” logo—also in Carbon Fiber. Together, they make one thing crystal clear: such an exclusive driving feel is worthy of an exclusive interior ambience.



Turbo interior package



Turbo interior package

Like surfing Niagara Falls.

Macan GTS.

Life isn't meant to be lived in neutral. It drives us on to new things day in, day out. It isn't about getting from A to B, but pushing oneself to the limit. Taking everything on board. And being part of the race—24 hours of each new day.

Made for the challenge, the highly efficient 3.0-liter twin-turbo V6 engine produces 360 horsepower and 369 lb.-ft. torque. And acceleration? The figures speak for themselves: 0 to 60 mph in a matter of 5.0 seconds. Not to mention the top track speed of 159 mph. The gearshifts of 7-speed Porsche Doppelkupplung (PDK), as standard, are equally sporty. And the Sport exhaust system with black Sport tailpipes delivers a particularly aggressive sound.

Air Suspension with Porsche Active Suspension Management is standard for Macan GTS and sits 10mm lower than other Macan models equipped with air suspension. It regulates damping force based on current road conditions and driving style, maintaining an intimate and intense relationship with the road. A typical trait for the Macan GTS.

The Macan GTS conveys an even lower and muscular stance when equipped with the dynamic SportDesign package. The imposing SportDesign front fascia, featuring matte black air intake grilles and side skirts reinforce the dynamic appearance. As do the side blades in matte black, a finish reserved exclusively for the Macan GTS. A genuine top-class athlete, we might say. And that status is reaffirmed by its 20-inch RS Spyder Design wheels in Satin Black.

As sporty as they are exclusive, they simply can't wait to blaze the asphalt. Visual accents are added by the Bi-Xenon™ headlights in black, including Porsche Dynamic Light System (PDLS) and the tinted LED taillights. Even the black "GTS" logo on the rear makes something unmistakably clear: the Macan GTS accepts no compromise.

Exquisite materials, such as leather and Alcantara®, and the latest version of Porsche Communication Management (PCM) system add the final touches to a sports car masterpiece promising to excite pure fascination. Right down the line.

If we had to express the word sportiness in just three letters, our answer would forever be: GTS.



Highlights of the Macan GTS

- Sport exhaust system with Sport tailpipes in black
- Porsche Doppelkupplung (PDK)
- Air suspension with ride height lowered by 10 mm and Porsche Active Suspension Management (PASM)
- 20-inch RS Spyder Design wheels in Satin Black
- Side blades in matte black with “GTS” logo
- SportDesign package with side skirts
- Bi-Xenon™ headlights in black with Porsche Dynamic Light System (PDLS)
- Tinted LED taillights
- 8-way GTS Sport Seats (electrically adjustable for driver and front passenger)
- GTS leather package with use of Alcantara® on seat centers, center console armrests and door armrests
- Three-zone automatic climate control
- Lane Departure Warning
- New Porsche Communication Management (PCM) system
- ParkAssist (front and rear), including reversing camera
- Power Steering Plus

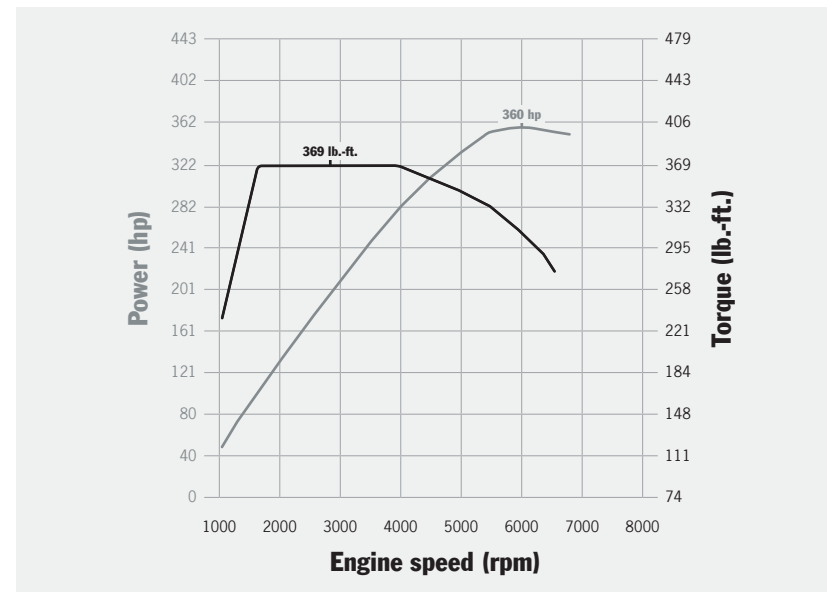
Selection of personalization options

- Sport Chrono Package
- Porsche Torque Vectoring Plus (PTV Plus)
- Porsche Ceramic Composite Brake (PCCB)
- Wheels up to 21 inches
- LED headlights with Porsche Dynamic Light System Plus (PDLS Plus)
- GTS interior package in Carmine Red or Rhodium Silver
- New Porsche Communication Management (PCM) system with navigation module
- Connect module with Porsche Car Connect and Apple CarPlay™
- Connect Plus module with telephone module, wireless Internet access, real-time traffic information, Apple CarPlay™, Google® Earth, and Google® Street View
- Bose® Surround Sound System
- Burmester® High-End Surround Sound System

Drive concept

- 3.0-liter twin-turbo V6 engine
- 360 horsepower at 6000 rpm
- Maximum torque: 369 lb.-ft. at 1650–4000 rpm
- Acceleration from 0 to 60 mph: 5.0 seconds
- Top track speed: 159 mph
- Direct fuel injection (DFI)
- Auto Start Stop function

For more on personalization, please refer to page 103 onwards.



Macan GTS: 369 lb.-ft. at 1650–4000 rpm, 360 horsepower at 6000 rpm



3.0-liter twin-turbo V6 engine

Pace car for the senses.

Macan S.

The “S” principle has long been a tradition as far as Porsche cars are concerned. It represents an especially sporty interpretation of a particular idea. It’s a promise of spine-tingling thrills—and omits anything superfluous to the spirit of sporty driving.

High performance, on the other hand, is something that the Macan S would never do without. Its 3.0-liter twin-turbo V6 engine generates 340 horsepower and helps it to sprint from 0 to 60 mph in only 5.2 seconds. Top track speed is 156 mph. Figures to raise the hairs on the neck of any sports car enthusiast.

The Macan S is equipped with 19" Macan Design wheels and silver-colored brake calipers. This high-performance athlete is also recognizable by the “Macan S” logo on the rear hatch—and on the door sill guards in aluminum.

Inside, sportiness is epitomized by the tachometer with silver-colored dial.

The sporty spirit can be intensified even further with a range of options such as the Sport Chrono Package. It includes the Sport Plus button, one press of which tunes the engine for an even sharper response. The chassis and transmission

also adapt their setup to Sport Plus mode. The package additionally comprises a stopwatch and the Launch Control function for the fastest possible acceleration from a standing start, e.g., on a racetrack. The latest Porsche Communication Management (PCM) system, integrated as standard, is supplemented by a performance display showing lap times and other essential driving stats.

The Macan S. For an unadulterated encounter with intensity.



Highlights of the Macan S

- Sport button
- Porsche Doppelkupplung (PDK)
- 19-inch Macan Design wheels
- Side blades in Lava Black
- Twin dual-tube tailpipes outside left and right with design specific to Macan S
- Electrically folding exterior mirrors
- Rain sensor
- Privacy glass
- Three-zone automatic climate control
- 8-way power seats with seat centers in Alcantara®
- Lane Departure Warning
- Piano Finish Black interior package
- Multifunction Sport steering wheel with gearshift paddles
- New Porsche Communication Management (PCM) system
- Automatic rear hatch
- ParkAssist (front and rear) reversing camera
- Power Steering Plus

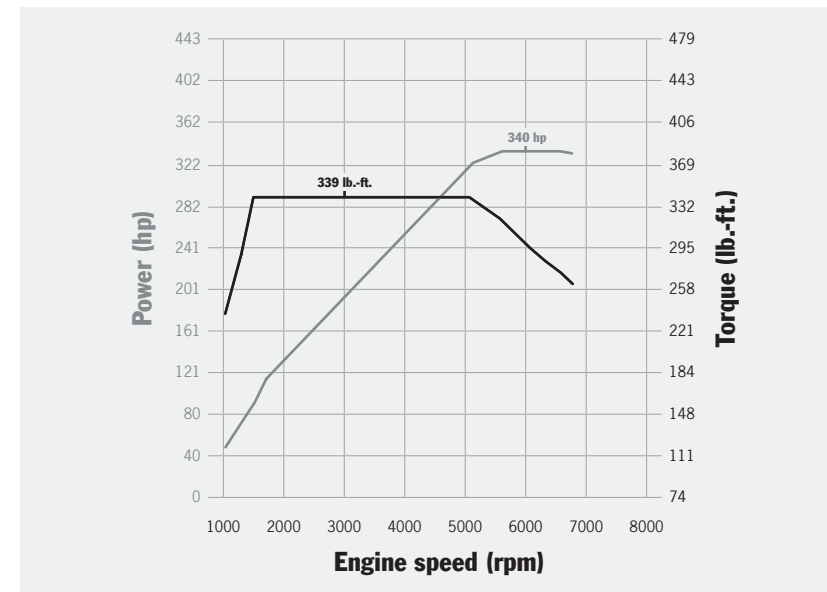
Selection of personalization options

- Air suspension with Porsche Active Suspension Management (PASM)
- Porsche Torque Vectoring Plus (PTV Plus)
- Porsche Ceramic Composite Brake (PCCB)
- Sport Chrono Package
- Wheels up to 21 inches
- Side blades in Carbon Fiber
- Bi-Xenon™ headlights with Porsche Dynamic Light System (PDLS)
- LED headlights with Porsche Dynamic Light System Plus (PDLS Plus)
- 18-way Adaptive Sport Seats with comfort memory package
- Porsche Communication Management (PCM) system with navigation module
- Connect module with Porsche Car Connect and Apple CarPlay™
- Connect Plus module with telephone module, wireless Internet access, real-time traffic information, Apple CarPlay™, Google® Earth, and Google® Street View
- Bose® Surround Sound System

Drive concept

- 3.0-liter twin-turbo V6 engine
- 340 horsepower at 5500–6500 rpm
- Maximum torque: 339 lb.-ft. at 1450–5000 rpm
- Acceleration from 0 to 60 mph: 5.2 seconds
- Top track speed: 156 mph
- Direct fuel injection (DFI)
- VarioCam Plus
- Auto Start Stop function

For more on personalization, please refer to page 103 onwards.



Macan S: 339 lb.-ft. at 1450–5000 rpm, 340 horsepower at 5500–6500 rpm



3.0-liter twin-turbo V6 engine

An incorrigible flirt with life.

Macan.

Some of us focus on leisure time, while for others family comes first. The Macan is prepared for the many challenges of life.

Under the hood, we see a 2-liter 4-cylinder engine—yet we still claim that this is a sports car? Of course we do. It is a Porsche after all. With 252 horsepower and acceleration from 0 to 60 mph in 6.3 seconds, the new Macan simply packs a punch. Efficiency is no exception.

Other identifiers include 18-inch Macan wheels and black brake calipers. For an individual look, you can choose from a wide range of colors and finishes.

The interior is ergonomic and multifunctional, and typical of a sports car. The driving experience inside the Macan can be intensified even further with features such as the new version of Porsche Communication Management (PCM) system—your control center for audio and telephone functions. Thanks to mobile phone integration, you can

connect directly via Bluetooth®. In response to hand movement, the integral proximity sensor activates the screen to display the relevant menu contents, which you can then operate intuitively using multi-touch gestures. Other options to help you face various challenges include the navigation module, the Connect Plus module, seat heating in the front and rear, child seats, and loadspace management systems.

The new Macan. Built for the most exciting terrain in life: new ground.



Highlights of the Macan

- Sport button
- Porsche Doppelkupplung (PDK)
- 18-inch Macan wheels
- Tire Pressure Monitoring System (TPMS)
- Side blades in Lava Black
- Twin single-tube tailpipes outside left and right
- Electrically folding exterior mirrors
- Three-zone automatic climate control
- 8-way power seats with seat centers in Alcantara®
- Lane Departure Warning
- Cruise control
- Piano Black interior package
- Multifunction Sport steering wheel with gearshift paddles
- New Porsche Communication Management (PCM) system
- Automatic rear hatch
- ParkAssist (front and rear) with reversing camera
- Power Steering Plus

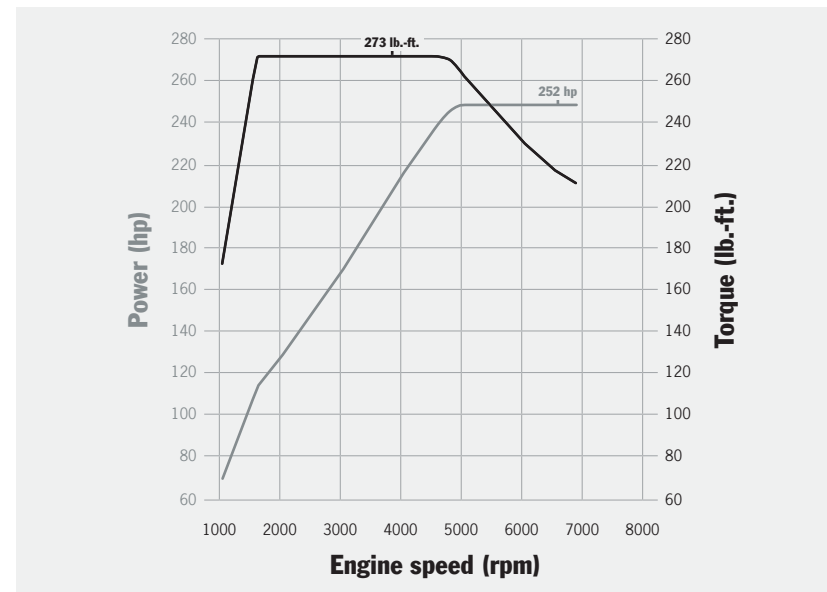
Selection of personalization options

- Air suspension with Porsche Active Suspension Management (PASM)
- Wheels up to 21 inches
- Roof rails in matte aluminum look or black
- Bi-Xenon™ headlights with Porsche Dynamic Light System (PDLS)
- LED headlights with Porsche Dynamic Light System Plus (PDLS Plus)
- Panoramic roof system
- Driver memory package
- Seat heating (front)
- New Porsche Communication Management (PCM) system with navigation module
- Connect module with Porsche Car Connect and Apple CarPlay™
- Connect Plus module with telephone module, wireless Internet access, real-time traffic information, Apple CarPlay™, Google® Earth, and Google® Street View
- 6-disc CD/DVD changer

Drive concept

- 2.0-liter inline 4-cylinder engine
- 252 horsepower at 5000–6800 rpm
- Maximum torque: 273 lb.-ft. at 1600–4500 rpm
- Acceleration from 0 to 60 mph: 6.3 seconds
- Top track speed: 142 mph
- Direct fuel injection (DFI)
- Auto Start Stop function

For more on personalization, please refer to page 103 onwards.



Macan: 273 lb.-ft. at 1600–4500 rpm, 252 horsepower at 5000–6800 rpm



2.0-liter inline 4-cylinder engine



Dynamics

There is much to motivate us. But what actually moves us?
It's a question we've been answering since 1948 with "sports car technology".

Even a life of moderation can be lived with intensity.

Drive.

VarioCam

The intake and exhaust camshafts in all Macan models are each equipped with a fully variable vane-cell controller for continuous timing adjustments. This helps deliver high specific power and high torque—even at low engine speeds—and, above all, reduced fuel consumption and low emissions.

VarioCam Plus

With their twin-turbo V6 engines, the Macan Turbo, Macan GTS and Macan S are additionally equipped with VarioCam Plus. This system switches the lift of the intake valves, resulting in instant acceleration and smooth engine running performance.

Coasting mode

The coasting function enables you to save even more fuel where the situation allows. The engine is decoupled from the transmission, which avoids the deceleration caused by engine braking. In this way, the vehicle makes optimal use of its own momentum and is able to coast for longer distances. This has real benefits for fuel consumption without any impact on comfort or sporty performance.

Standard in all Macan models.

Auto Start Stop function

To improve fuel economy, the Auto Start Stop function switches off the engine when you are coming to a stop at traffic lights, for example.

Standard in all Macan models.



Direct fuel injection (DFI)

With millisecond precision, DFI injects fuel at up to 2900 psi directly into the combustion chamber by means of electromagnetically actuated injection valves. The spray and cone angles have been optimized for torque, power output, fuel consumption and emissions by enabling a homogeneous distribution of the air/fuel mixture and, therefore, effective combustion. DFI improves the internal cooling of the combustion chamber by having the mixture prepared directly in the cylinder. This allows for a higher compression ratio, which helps deliver greater power output at the same time as enhanced engine efficiency.

Thermal management

Engine cooling is prevented during the initial stages of a cold start so that the engine reaches its optimal operating temperature faster. This means it can begin working at high efficiency sooner, thereby consuming less fuel.

Active aerodynamics

The active radiator baffles open the air-intake flaps only as needed. Whenever the cooling requirement is low, such as on relaxed drives, the radiator baffles close. Aerodynamics are enhanced, which helps to improve fuel economy. If, for example, a sporty driving style is adopted and the demand for power increases, the air-intake flaps will open and let in the necessary amount of cooling air for increased driving performance.

Oil supply

The integrated dry-sump lubrication of the V6 gasoline engines guarantees a reliable supply of oil in all driving situations. The oil reservoir is located directly inside the engine, which saves on space and weight. An electronically controlled oil pump provides the correct amount of oil as and when needed. Optimized for sporty driving, it ensures optimal engine lubrication even in extreme situations.



Exhaust turbocharging

The twin-turbo V6 engines are equipped with two turbochargers arranged in parallel—one for each cylinder bank. Intake air is compressed and then fed to the engine via the respective intercoolers. This cooling process achieves high cylinder charge and low component temperatures.

Electrical system recuperation

To enhance efficiency, the electrical system in the Macan models is recharged on demand during engine overrun phases. Fuel consumption is thereby reduced, while the full power output of the engine is made available for acceleration phases. You won't notice anything of the process itself, except for the results: optimal power and torque with lower fuel consumption and CO₂ emissions.

Sport button

The Sport button, which is fitted as standard, allows you to select a setup that favors either comfort or sporty performance. When the button is pressed, the electronic engine management system switches the engine mapping to offer an even sharper response and more direct engine dynamics.

Sport tailpipes

Sport tailpipes are available for your Macan on request. The twin dual-tube tailpipes are specially designed and feature a highly polished chrome-plated stainless steel finish, also available in chrome-plated black. A sporty statement that is visually unmistakable.

Standard in the Macan GTS.

Optional for all other models.

Sport exhaust system

The Sport exhaust system delivers an even more resonant sound. The Sport tailpipes in chrome-plated stainless steel—available in a choice of silver color or black—are a treat for both the eyes and the ears.

Standard in the Macan GTS.

Optional for all other models.



Twin dual-tube tailpipes on the Macan Turbo



Exclusive

Sport tailpipes in black



Twin dual-tube tailpipes on the Macan S



Twin single-tube tailpipes on the Macan

The love of the road inspires some remarkably intense relationships.

Transmission.

Porsche Doppelkupplung (PDK)

7-speed PDK, standard in the Macan models and featuring both a manual and an automatic mode, offers extremely fast gear changes with no interruption in the flow of power—as well as excellent driving dynamics and a high degree of efficiency.

The principle of PDK is that whenever a particular gear is engaged, the next gear is already preselected. As a result, gear changes take place within milliseconds.

Automatic mode is optimized for fuel economy. This means that PDK is able to offer not only a sporty, agile driving feel, but also increased efficiency.

Would you rather change gears manually?

You can do this using the two gearshift paddles on the multifunction Sport steering wheel, standard, or using the PDK gear selector.

In conjunction with the optional Sport Chrono Package, the shift times of PDK become even shorter, the gear changes even sportier. Additional gearshift strategies are also available—for uncompromising driving pleasure.

Porsche Traction Management (PTM)

The tremendous dynamic performance of the Macan is thanks in part to the Porsche Traction Management (PTM)

active all-wheel drive system. It comprises an electronic and map-controlled multi-plate clutch, the automatic brake differential (ABD) and anti-slip regulation (ASR). The electronically controlled multi-plate clutch regulates the distribution of drive force between the rear axle and the front axle. Driving conditions are constantly monitored to enable a precise and lightning-quick response to a variety of situations.

Sensors continuously check, among other variables, the rotation speeds of all four wheels, the longitudinal and lateral acceleration of the vehicle, and the steering angle. If, for example, the rear

wheels threaten to spin under acceleration, a greater proportion of drive force is distributed to the front by a more powerful engagement of the multiplate clutch. In addition, ASR reduces wheel slip. In corners, the drive force sent to the front wheels is regulated for optimal lateral stability.

In short, PTM transfers the incredible sportiness of the Macan to the road. Behind the wheel, you can feel what it's like to be driving a genuine sports car: traction, outstanding steering behavior, superior handling, and, of course, the excellent dynamics typical of any Porsche.



**In exceptional circumstances,
even a Porsche doesn't seem out of place.**

Off-road button

Would you like to try roads that aren't actually there? A button on the center console sets your Macan to Off-road mode. All relevant systems switch to a traction-optimized program for off-road terrain. The optional air suspension with PASM automatically adjusts to Terrain Level. In addition, optional Porsche Torque Vectoring Plus (PTV Plus) and Porsche Stability Management (PSM)—integrated as standard—optimally adapt their setup for off-road use, delivering improved driveability and safety.

Porsche Traction Management (PTM), which is also standard, provides a fully variable distribution of drive force between the front and rear axles—up to 100 percent if necessary. This delivers an increase in traction and driving safety.
Standard in all Macan models.

Porsche Hill Control (PHC)

A button on the center console enables you to activate Porsche Hill Control (PHC), which keeps your speed constant on downhill gradients. You can set any speed between 2 and 19 mph.
Standard in all Macan models.

Steering

The steering has been engineered for sporty and immediate handling. The tuning of the electromechanical steering system is what makes the Macan models so extraordinarily agile.

It also contributes to low fuel consumption. As there is no hydraulic system constantly drawing power, energy is consumed only when the steering is turned.
Standard in all Macan models.

Power Steering Plus

Power Steering Plus is a speed-sensitive power steering system. At high speeds, the steering firms up and responds with greater precision, while steering comfort remains outstanding. At low speeds, the steering ratio adjusts for easy maneuvering and parking.
Standard in all Macan models.



Life can't be truly intense without some twists and turns.

Porsche Torque Vectoring Plus (PTV Plus)

Sports car makers adore corners. With our technologies, we are forever fanning the flames of the relationship. PTV Plus is an optional system for enhancing both driving dynamics and stability.

Operating in conjunction with an electronically regulated rear differential lock, it works by varying the torque distribution to the rear wheels. When the car is driven into a corner, moderate brake pressure is applied to the inside rear wheel as the situation demands. Consequently, a greater amount of drive force is distributed to the outside rear wheel, inducing an additional rotational pulse (yaw movement) around the vehicle's vertical axis. The effect is a direct and sporty steering action. And tremendous driving pleasure at every twist and turn.

At low and medium vehicle speeds, PTV Plus significantly increases agility and steering precision. At high speeds on the straight, and in fast corners where the wheels threaten to spin, the electronically controlled rear differential lock provides added driving stability. Stability is also improved on road surfaces with varying grip as well as in the wet and snow.

Optional for all Macan models.

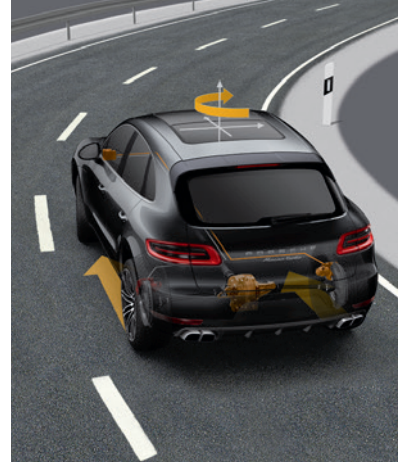
Sport Chrono Package

The Sport Chrono Package adds a stopwatch with an analog and a digital display to the cockpit. The performance display in PCM lets you view a range of driving stats, including your total driving time, current lap distance and lap times recorded so far.

The center console also comes equipped with the Sport Plus button, which is used to activate Sport Plus mode. In this mode,

the engine becomes even more responsive and the rev limiter is adjusted to a harder setting. Porsche Traction Management (PTM) is now tuned for even sportier performance. For cars with Porsche Active Suspension Management (PASM), Sport Plus mode results in harder damping and more direct steering. In addition, the trigger threshold for PSM is raised for increased longitudinal and lateral dynamics. The shift times of PDK, standard, become even shorter, the gear changes even sportier. The optional air suspension automatically drops to Low Level. Launch Control is primed to deliver optimal acceleration from a standing start.

Optional for all Macan models.



Porsche Torque Vectoring Plus (PTV Plus)



Sport Chrono Package with performance display in PCM



The wheel was invented 5000 years ago. Seems only now it's hitting the big time.

Staggered tires

As with any genuine sports car, the Macan is equipped with wider tires at the rear—just like the 911. The visual impact is not the only effect: the larger footprint at the rear improves both stability and traction and also enhances agility for intensified contact with the road.

Wheels

For the wheels, too, everything revolves around sporty performance—and style. Accordingly, the Macan serves up some impressive numbers: the wheels look exceptionally large, with optional sizes up to 21 inches.

What they all have in common is their aluminum construction, which saves weight and increases agility. That's particularly true of the forged 21-inch wheels.

The Macan is equipped, as standard, with 18-inch Macan wheels, the Macan S with 19-inch Macan Design wheels. The Macan Turbo is fitted with 19-inch Macan Turbo wheels as standard. The Macan GTS lines up on 20-inch RS Spyder Design wheels in Satin Black.

Tires

All tires have been optimized for driving performance, handling, rolling resistance and weight. Wheel sizes between 18-inch and 20-inch come with all-season tires as standard. High performance summer tires are available as a no cost option. All 21-inch wheels come with summer tires as standard.

Tire Pressure Monitoring System (TPMS)

Tire Pressure Monitoring System sends warnings to the onboard computer's display screen in the event of low tire pressure or a gradual or sudden loss of pressure. The multifunction display in the instrument cluster gives you a quick and convenient way to check your tire pressure.



18-inch Macan wheel



18-inch Macan S wheel



19-inch Macan Turbo wheel



19-inch Macan Design wheel



20-inch Macan SportDesign wheel



20-inch RS Spyder Design wheel



21-inch 911 Turbo Design wheel highly polished on the outside, black (high-gloss) on the inside—exclusive to the Macan Turbo with Turbo exterior package



20-inch RS Spyder Design wheel in Satin Black—exclusive to the Macan GTS



21-inch 911 Turbo Design wheel



Exclusive 21-inch Sport Classic wheel painted in black (high-gloss)

Instinct

Life is good. To keep it that way, you need protection.
With a sense of balance between fun and responsibility.



You aren't usually so quick to brake.

Brakes

At Porsche, we also set high standards for braking performance. So it goes without saying that our brake systems are super-sized and adapted to the high power output of the engine.

The 4C Macan model is equipped with 4-piston aluminum monobloc fixed brake calipers at the front. All other models get 6-piston fronts. Rear calipers are the same across all models. The brake discs are internally vented for consistently high braking power even during continuous use.

To cope with the performance capability of the Macan models, the brake discs fitted to the front axle are up to 360 mm in diameter.

The brake calipers of the Macan are finished in black. The calipers on the Macan S are silver-colored. On the Macan Turbo and Macan GTS—red.

Porsche Ceramic Composite Brake (PCCB)

As an option, you can have your Macan equipped with the track-proven Porsche Ceramic Composite Brake (PCCB).

The cross-drilled ceramic brake discs have a diameter of 396 mm at the front axle and a thickness of 38 mm. At the rear, they are 370 mm in diameter and 30 mm thick.

Their low thermal expansion prevents deformation under heavy braking. Furthermore, the ceramic brake discs are totally resistant to corrosion and offer more favorable noise-damping properties.

The key advantage is that the brake discs are approximately 50 percent lighter than standard discs of similar design and size. Enhanced performance and fuel economy are among the most noticeable benefits along with a major reduction in unsprung and rotating masses. The results are improved handling, better roadholding and increased comfort.

**Optional for the Macan Turbo, Macan GTS and Macan S.
Standard on Macan 4C.**

Porsche Stability Management (PSM)

PSM is an electronic control system that helps maintain stability—and increases driving safety—even at the limits of sporty performance.

Sensors continuously monitor driving direction, speed, yaw velocity and lateral acceleration. PSM actively intervenes to stabilize the vehicle when necessary by strategically applying the brakes at individual wheels. That's not all. If the driver suddenly releases the accelerator pedal, PSM primes the brake system for a higher state of readiness. Maximum braking power is therefore achieved much sooner. Integral ABS is optimized for short braking distances.



Porsche Ceramic Composite Brake (PCCB) on the Macan S



Porsche Ceramic Composite Brake (PCCB)



Macan Turbo and Macan GTS brake system



Macan S brake system



Macan brake system

Airbags

All Macan models are equipped, as standard, with full-size airbags for the driver and front passenger. These are supplemented by the Porsche Side Impact Protection (POSIP) system.

It comprises side airbags in the front seats, curtain airbags along the entire roof frame and the side windows from the A-pillar to the C-pillar, and side impact protection elements in the doors. Side airbags are standard for the rear compartment.

Two auxiliary sensors in the bumper help detect frontal collisions. A cluster of acceleration and yaw rate sensors detects a threat of rollover and triggers the curtain airbags and seat belt pretensioners.

Engineered body design

The use of ultra- and super-high-strength micro-alloyed steels makes a crucial contribution to safety and, at the same time, purposefully encapsulates the principle of lightweight construction.

The forces exerted in the event of a frontal impact are dispersed by a system of longitudinal and transverse members. Reinforcements in ultra-high-strength steel provide additional protection for occupants in the event of a side impact.

The system also uses multiphase steels. High-strength and clearly defined deformability are two qualities that they have in common. The passenger cell is a cage formed of high-tech steels and offers a high level of protection.



Passive safety, airbags

- Super-high-strength micro-alloyed steels
- Multiphase steels
- Deep-drawn steels
- Boron-alloyed steels
- Aluminum



Passive safety, bodyshell

**Living for today, in the here and now.
But always caring about tomorrow.**

Environment.

Efficiency

The basic premise of any Porsche is power. It's been that way ever since 1948. But there has always been another principle: efficiency. We remain committed to both, and we always will.

In addition to our pursuit of efficient engine technologies, such as the turbochargers used across the model range, we routinely rely on innovative, lightweight materials, we are constantly developing our production techniques and functionalities and, as we do so, we are continuously refining our concepts.

How does this benefit you as the driver? Greater agility with increased dynamic performance—and lower fuel consumption. Now that's efficiency.

Exhaust emissions

The Macan once again demonstrates that even high-performance sports cars can achieve comparatively moderate emission values. The state-of-the-art engines of the Macan model range reach their optimal operating temperature soon after start-up, thanks to rapid heating of the catalytic converter system. Emissions are thereby reduced, while tires optimized for low rolling resistance play their part by reducing fuel consumption.

All models are equipped with stereo Lambda control circuits. These are used by the electronic engine management to determine the optimal amount of fuel for effective emission control.

Fuel and fuel consumption

Doing more with comparatively less—another philosophy that the Macan models live and breathe. The gasoline models are designed to operate on fuels with an ethanol content of up to 10 percent. Ethanol has a positive impact on the CO₂ balance because this biofuel is manufactured from plants that absorb CO₂ from the atmosphere in order to grow.



Fuel system

Even the emissions of the fuel system itself are minimized for the protection of the environment. Evaporative emissions are significantly reduced by the returnless supply system. Vapor-carrying lines are made from multilayered plastic, while a high-capacity active carbon filter and the fuel tank also feature a multilayered construction in order to make everything as impermeable as possible.

Noise reduction

The characteristic Porsche sound may drive our passion, but acoustics is yet another area in which we continuously strive for optimization.

Stiff components and lightweight, temperature-stable materials minimize play between parts and therefore mechanical noise. Voluminous silencers and air induction systems reduce noise levels further—and that's over the course of the entire service life.

In collaboration with tire manufacturers, we are managing to reduce the rolling noise of tires, while aerodynamic refinements keep wind noise as low as possible. What's left? The Porsche sound, pure and simple.

Maintenance

Long-life and hard-wearing materials reduce maintenance items to a minimum. At the time of an oil filter change, for example, only the recycling-friendly paper insert needs to be exchanged and not the entire housing.

Moving parts are adjusted automatically, e.g., by hydraulic valve clearance compensation.

The use of individual ignition coils in gasoline engines makes the entire ignition system, except for the spark plugs, wear- and maintenance-free. Advantage for you? If it doesn't need replacing, it doesn't need to be disposed of. Not only

does this support the responsible handling of resources and a caring attitude towards the environment, it saves you time and money.

The maintenance intervals of the Macan models nevertheless depend on various factors, including the local fuel grade. For exact information, please refer to the price list published in your country or consult your authorized Porsche dealer.

Materials and recycling

A Porsche is a source of long-lasting pleasure for our customers and a refreshing change for their environment. This Porsche principle can be summed up in one word: sustainability.

Here's just one example: the exhaust system of the Macan models is made from extremely corrosion-resistant stainless steel—and purposefully manufactured on the principles of lightweight construction. In addition, our cars are free from CFCs

and parts manufactured with the use of CFCs. In all, they are over 95 percent recoverable. Naturally, all statutory recycling requirements are fulfilled. The labeling of materials facilitates future sorting for excellent recycling.

On the subject of recycling, there is plenty of time before it is even needed. Two-thirds of all Porsche cars ever built are still being driven today. What better way to conserve resources?



Multitasking

Life is about challenges:
what we want from life—and what everyday life wants from us.
So it's nice to be prepared for every eventuality.



Nothing in life should remain unseen.

LED headlights with Porsche Dynamic Light System Plus (PDLS Plus)

Available as an option, new PDLS Plus LED headlights are distinguished by their unmistakable look, characterized by style-defining four-point LED spotlights. The luminous power of the headlights helps to provide optimal illumination of the road at all times.

The Porsche Dynamic Light System Plus (PDLS Plus) also includes dynamic high beam control for better illumination of your surroundings, so you see what's going on all around you. The dynamic cornering light function swivels the main headlights towards the inside of a bend, while the

static cornering lights activate the auxiliary headlights in order to illuminate more of the road in tight bends and turns.

Daytime running lights

Daytime running lights are standard on all models. The light source is four LED spotlights in each. The benefit is clear: driving becomes a safer experience.



LED headlight with PDLS Plus



Daytime running lights with LED headlights



Low beam with LED headlights



Low beam and cornering lights with LED headlights



Low beam and cornering lights with LED headlights



High beam with LED headlights

Bi-Xenon™ headlights with Porsche Dynamic Light System (PDLS)

The Bi-Xenon™ headlights feature automatic and dynamic range control, which provides uniform illumination of the road whether low or high beam is selected. The dynamic cornering light function swivels the headlights towards the inside corner based on the steering angle and road speed. The static cornering lights activate the auxiliary headlights so as to light up more of the road at tight bends and turns. Put simply, a greater part of the road ahead is illuminated the moment you enter a bend.

Ultra-exclusive accents are added by the optionally available Bi-Xenon™ headlights in black with PDLS. On the Macan GTS, the inner trim is also finished in black.

Bi-Xenon™ standard in the Macan and Macan S.

Bi-Xenon™ w/PDLS standard in the Macan Turbo.

Bi-Xenon™ Black w/PDLS standard in the Macan GTS.

LED taillights

The three-dimensional design of the LED taillights pays homage to the 918 Spyder super sports car and lends an impressive appearance of depth. At the same time, they are especially responsive and powerful. The third brake light is integrated in the roof spoiler. What's more, the LED taillights are also available with tinted lenses: standard on the Macan GTS as part of the Turbo exterior package, otherwise optional for every Macan model. A sporty accent to leave a lasting impression.



Night design of low beam Bi-Xenon™ headlights and position lights



Night design of rear driving lights and brake lights



Daytime running lights with Bi-Xenon™ headlights



3D LED taillights

**Lean back? Yes.
Put your feet up? No.**

Comfort.

Interior architecture

Five doors. Five seats. Excellent everyday practicality—and an elevated sitting position. That's what you can expect of an SUV. Now let's consider what you can expect of a Porsche: sports car sensations.

You get in—and find the ignition switch closest to the door. It's typically Porsche, and has been since 1948. An old motorsport tradition.

The interior architecture integrates you perfectly into the vehicle. This is exemplified by the three-dimensional arrangement of the controls and the ascending center console with control buttons for the most important comfort functions. The layout emulates that of the Carrera GT—it's as if you're sitting in a sports car.

The multifunction Sport steering wheel with 918 Spyder design provides the ideal hands-on experience. Its appearance is futuristic and its design highly ergonomic. Gearshift paddles as well as multifunction buttons for telephone, radio, and onboard computer offer high levels of user comfort. Steering wheel heating is available as an option.

Sports car genes are also inherent in the three round instruments. The tachometer is positioned in the center, exactly where it belongs in a sports car. In this way, you can see all the essentials at a glance when you're on the move—and keep up to speed with all relevant information.



Take the high-resolution 4.8-inch color screen in the instrument cluster as an example. It displays messages from the onboard computer and—in conjunction with the new version of PCM with optional navigation module—shows the map of the navigation system.

The seats offer racing-style support and a high degree of seating comfort. In cars with the driver memory package or comfort memory package, you can store personalized seat, steering wheel and exterior mirror settings. Your car will then automatically adapt to you. In the Macan GTS, exclusive eight-way Sport seats convey the thrilling feel typical of a genuine sports car, while “GTS” logos embroidered on the headrests catch the eye. Even more exclusive: the Turbo interior package comes with a full leather interior in black, selected items in Alcantara®, embroidered “Turbo” logos and precisely defined contrasts.

The use of exquisite materials such as leather brings exclusivity to ordinary life.

In the Macan Turbo, the adaptive Sport seats with 18-way adjustment are completely upholstered in leather. On request, you can refine even more interior features of your Macan with Alcantara®, leather, wood, Carbon Fiber or aluminum.

Standard onboard features include three-zone automatic climate control as well as remote central locking.

On principle, all controls are ergonomically arranged for speedy access to desired functions.

Practicality is also assured by storage solutions in the front and rear doors. Even large bottles are accommodated.

The large luggage compartment offers a loading capacity of 17.7 cu.ft. The rear bench seat has a split-folding ratio of 40:20:40. With the seats fully folded, available capacity increases to 53 cu.ft.

For more on personalization, please refer to page 103 onwards.



Driver memory package and central locking system



18-way Adaptive Sport Seats



Door storage compartment



Sport Seats



14-way Comfort Seats



Luggage compartment capacity up to 53.0 cu. ft.

With 30000 racing victories behind us, we can afford to ease back a little.

Power seats

Power seats with electric eight-way adjustment on the driver's and passenger side are both ideal for relaxed motoring and practical to operate. Seat height, fore/aft position, cushion angle and backrest angle are all adjustable. Seat centers in Alcantara® create a sporty accent.

Standard in the Macan S and Macan.

8-way Sport Seats

Exclusive eight-way Sport seats provide a rather sportier alternative, perfectly emulating the feel of an out-and-out sports car. The 8-way electric adjustment capability on the driver's and front passenger side includes seat height, fore/aft position, cushion angle and backrest angle.

Standard and exclusive to the Macan GTS.

With the GTS interior package available for the Macan GTS, the seat centers are upholstered in Alcantara®—in true

motorsport style. Contrasting stitching in Carmine Red or Rhodium Silver creates an even sportier appearance. The “GTS” logo in a contrasting color embroidered on the headrests completes the profile of a top-class athlete.

Optional and exclusive to the Macan GTS.

14-way Power Seats with comfort memory

Would you like generous seating comfort for both seats in the front? To supplement the eight adjustable features of the comfort seats, the power seats with comfort memory package offer additional adjustment capabilities, namely the lumbar support, seat cushion length and steering column. Personalized settings, such as driver and front passenger seat positions, including lumbar support, can be stored—as can steering wheel and exterior mirror positions.

Available at no extra cost for the Macan Turbo. Optional for all other Macan models.

18-way Adaptive Sport Seats with comfort memory

The Adaptive Sport Seats with comfort memory package combine ultimate seating comfort with racing-style support. Their side bolsters are particularly high and prominently contoured. Offering 18-way electric adjustment, the seats can be optimally adapted to meet your needs in terms of seat height, cushion and backrest angle, cushion length, fore/aft adjustment and four-way lumbar support. The steering column is also electrically adjustable. The following functions can be memorized: driver and front passenger seat positions, including lumbar support, and steering wheel and exterior mirror positions.

Standard in the Macan Turbo.

Optional for all other Macan models.

Exclusive to the Turbo interior package: contrasts in Garnet Red or Rhodium Silver and selected items in Alcantara®. And,

adding further accents, the “Turbo” logo embroidered on the headrests.

Turbo interior package optional and exclusive to the Macan Turbo.

Seat/steering wheel heating

For all seat designs, seat heating is available for the front or as a package for the front and rear. Steering wheel heating, which keeps the rim at a pleasant temperature, is available as an option.

Standard in the Macan Turbo.

Optional for all other Macan models.

Seat ventilation

Optional seat ventilation for the front provides even greater comfort on long journeys and in the summer. (Only available in conjunction with seat heating, comfort memory package or Adaptive Sport Seats). Not compatible with seat centers in Alcantara®.

Optional for the Macan Turbo, Macan S and Macan.



18-way Adaptive Sport Seats with comfort memory package

14-way Power Seats with comfort memory package

8-way Sport Seats

In the midst of life there is space for five.

Rear seats

The rear bench seat has a three-way split-folding ratio—and folds down fully if required. The versatile center seat doubles as a through-loading facility for long cargo items and for the optional ski bag. It additionally contains the folding armrest, which features two extra cupholders. Operation of the rear bench seat is totally straightforward: release, fold—done.

Child seats

The Porsche Tequipment range of aftermarket accessories features a collection of specially designed Porsche child seats. Engineered to meet strict safety standards, they have been tested and approved specifically for Porsche cars. As a result, they provide protection and comfort to passengers up to 12 years of age. The fabrics are breathable, hypoallergenic and easy to clean. The cover is removable and washable.

For increased safety, Porsche Baby Seat and Porsche Junior Seat LATCH have an independent five-point belt system with central belt length adjustment.

LATCH mounting points¹ are available on the outer rear seats as standard, while the additional top-tether belt attachment is a standard feature on all rear seats.



Porsche Junior Seat LATCH in rear compartment



Rear bench seat folded 2/3



Rear bench seat folded 1/3



Rear bench seat fully folded

¹ LATCH is a secure and user-friendly child seat mounting system that rigidly attaches the child seat to the vehicle.

Our contribution to the information age: acceleration.

New Porsche Communication Management (PCM) system

Infotainment for a new generation: the latest version of Porsche Communication Management (PCM) system—integrated as standard, optionally with navigation module—is your control center for audio, navigation and communication functions.

PCM is operated by means of the new 7-inch multi-touchscreen or multifunction Sport steering wheel. Alternatively, you can use the conventional rotary pushbutton controls. In response to hand movement, the integral proximity sensor activates the screen to display the relevant menu contents, which you can then operate easily using multi-touch gestures. With its high-quality glass surface, PCM is the aesthetically perfect addition to the center console.

Infotainment begins the moment you connect and charge your smartphone or hook up any other audio source of your choice. Simply use the USB interface or the auxiliary input in the center console.

Your iPod® or USB stick can also be operated conveniently via PCM or the multifunction Sport steering wheel. What's more, the USB connection allows you to download data from the performance display of the optional Sport Chrono Package or from the optional electronic logbook.

For your personal music collection, the CD/DVD drive is supplemented by an internal hard drive (“jukebox”) and two SD card readers.

With mobile phone preparation integrated as standard, a Bluetooth® connection can be established automatically with smartphones that support the Handsfree Profile (HFP). This means that you can leave your smartphone tucked away, and you can use PCM to operate its basic functions. The GSM connection is always established through the antenna of the smartphone.

Infotainment highlights at a glance:

- Latest version of Porsche Communication Management (PCM) system, including mobile phone preparation and Sound Package Plus
- Optional navigation module, including voice control system
- Optional Connect module with Porsche Car Connect and Apple CarPlay™
- Optional Connect Plus module, including telephone module, real-time traffic information, Google® Earth, Google® Street View, Porsche Connect app, and wireless Internet access



Real-time traffic information and Google® Earth screen

Do you feel there's a special connection between you and your Porsche? It does, too.

Connect module

The optional Connect module makes the optimal connection between your smartphone and your Macan. Porsche Car Connect allows you to control certain functions of your Macan via your smartphone or Apple Watch®. Apple CarPlay™ lets you use your iPhone® even when you're on the move.

Connect Plus module

In conjunction with the PCM including navigation module, the Connect Plus module is offered as an alternative, upgraded option. It comes with online navigation (with real-time traffic information¹), Apple CarPlay™, wireless Internet access and a convenient voice control system (available at no extra cost) for operating PCM or your audio source.

The LTE telephone module offers convenience, excellent reception and optimized voice quality. You can simply insert your SIM card into the card reader and make calls using the hands-free facility. For even more convenience, the Bluetooth® capability of a mobile phone can be used to make calls via the SIM Access Profile (SAP). Once the link has been established automatically, the mobile phone's antenna is switched off to conserve battery charge and the phone operates via the car antenna.

Online navigation

The Connect Plus module delivers real-time traffic information to the Macan for the first time. Now you can find out even before you set off which routes are best avoided if you wish to arrive at your

destination sooner. Throughout the journey, the optimal route is dynamically recalculated based on regular updating of traffic data.

The online navigation feature of the Connect Plus module also includes Google® Street View¹ and Google® Earth¹. Their 360° views and satellite imagery provide helpful visual cues on the way to your destination.

Apple CarPlay™

With Apple CarPlay™, you can use the apps on your iPhone® from the driver's seat—via PCM or optional voice control. The voice control system can also be used to make phone calls. And with Siri®, the Apple® voice recognition interface, you can compose text messages, have

incoming SMS read out loud and send your replies—or you can listen to music and podcasts, all while keeping your full concentration on the road.

Wireless Internet access

Wireless Internet access gives you in-car online access from WiFi-enabled client devices (e.g., tablets, laptops, smartphones or netbooks), simultaneously if necessary.



Apple CarPlay™ in the latest version of Porsche Communication Management (PCM) system including Connect module



Google® Street View

¹ The services real-time traffic information, Google® Street View and Google® Earth include an initial free subscription period of at least 12 months. Please visit www.porscheusa.com/connect if you wish to continue usage (subject to charge) after this period. A data-enabled SIM card and a separate, valid subscription to a mobile network provider (subject to charge) are required for use of these services and wireless Internet access. For information on the availability of Connect Plus in your area, please consult your authorized Porsche dealer.

For further information on Connect Plus and availability in your area, please visit www.porscheusa.com/connect or consult your authorized Porsche dealer.

Porsche Connect app

The Porsche Connect app for your smartphone (available free of charge from Apple® iTunes and Google® Play Store) is designed to interact with the Connect Plus module. As soon as your smartphone is connected to the vehicle, you can use PCM with navigation module to gain easy access to your calendar events, addresses and any destinations saved in the app. In this way, you can dial stored telephone numbers directly and use addresses from your calendar events as your navigation destination.

That's not all. The music streaming function gives you access to millions of music tracks.

Porsche Car Connect

Sports car driving has always relied on the relationship between driver and vehicle being as intimate as possible. Thanks to Porsche Car Connect, this relationship becomes even more intimate—no matter how far from your Porsche you might be.

As an integral feature of the Connect or Connect Plus module, Porsche Car Connect offers a host of information and functions for accessing your Macan remotely. Carfinder, for example, displays the shortest route from your current position to your car's parked location.

Thanks to Remote Vehicle Status, the most important data from your Macan are always available at a glance. For example, you can call up your odometer reading and fuel level or check whether the

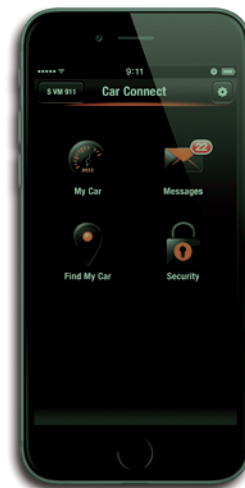
windows and doors are open or closed. Remote Services gives you fingertip access to a range of statistics recorded by your car, including distance covered, average speed, and fuel consumed during the last drive.

Your smartphone or Apple Watch® can also be used to lock the doors and fold the electric exterior mirrors. Particularly practical: with Porsche Car Connect, you can make a breakdown call at any time.

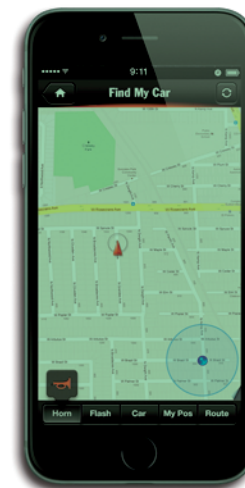
Porsche Vehicle Tracking System (PVTS)

Another feature of Porsche Car Connect is the Porsche Vehicle Tracking System (PVTS), enabling remote location of a stolen vehicle.

For further information on Porsche Car Connect, please visit: www.porscheusa.com/connect



Car Connect overview



Carfinder



Apple Watch®



Range display



GPS
33° 52' 3.2" S, 151° 12' 38.2" E

GPS location via Porsche Vehicle Tracking System (PVTS)



Is virtual mobility something else you appreciate?
Scan code or go to www.porsche.com/usa/connect/availability/ and start the film.

How Porsche sounds in the rock, pop, and classical categories.

Porsche Rear Seat Entertainment Plus

A cinematic experience enjoyed in the second row. New Porsche Rear Seat Entertainment Plus has been specially developed to appeal to the discerning viewers in your Macan. Thanks to two high-resolution 10.1-inch TFT color touchscreens on the front seat backrests, each featuring an integrated DVD drive, two USB interfaces, an SD card interface, an HDMI interface and an internal 32-GB flash memory, a world of entertainment is at your passengers' fingertips. What's more, it's also possible to surf the Internet¹ along the way.

Sound Package Plus

Sound Package Plus, with 10 loudspeakers and a total output of 150 watts, delivers excellent sound. The amplifier integrated into PCM optimally adapts the acoustic pattern in the vehicle interior to the driver and front passenger.

Bose® Surround Sound System

The system has been optimally tuned for the models in the Macan range. A total of 14 loudspeakers, including an active subwoofer and center speaker, and 14 amplifier channels with a total output of 665 watts deliver an impressive sound experience.

In combination with the new version of Porsche Communication Management (PCM) system, the Bose® Surround Sound System enables audio playback of DVDs and is thus able to make full use of the impressive sound spectrum of 5.1 digital recordings. Of course, you can still play other audio sources, such as CDs or MP3 players, in stereo or, at the push of a button, in one of the available virtual surround modes.

Noise compensation technology uses a microphone to continuously measure the ambient noise inside the vehicle and adapts music playback automatically so that a consistent sound is maintained at all times.

Standard in the Macan Turbo.

Optional for all other Macan models.



Porsche Rear Seat Entertainment Plus



Bose® Surround Sound System

¹ The Internet connection can be established either by means of the Wireless Internet Access feature of the optional Connect Plus module or by using a smartphone or tablet computer as a mobile hotspot (tethering).

**A pounding beat.
Even when the engine's switched off.**

**Burmester® High-End Surround
Sound System**

As a creator of sports cars, we love to push boundaries—sound barriers included. This is demonstrated perfectly by the Burmester® High-End Surround Sound System, which has been optimally tuned for the Macan model range. It converts sound waves into a unique feast for the senses—and music into an exclusive listening experience.

The surround sound system developed by Burmester®—one of the most respected manufacturers of high-end audio equipment worldwide—is available as an option.

The technologies behind the system are from the finest premium home audio systems that Burmester® has to offer. State of the art and never heard before in a vehicle of this class.

The extravagance is uncompromising, the craftsmanship exquisite, the sound phenomenal. The system owes its excellence to countless details, and one goal: perfection in sound.

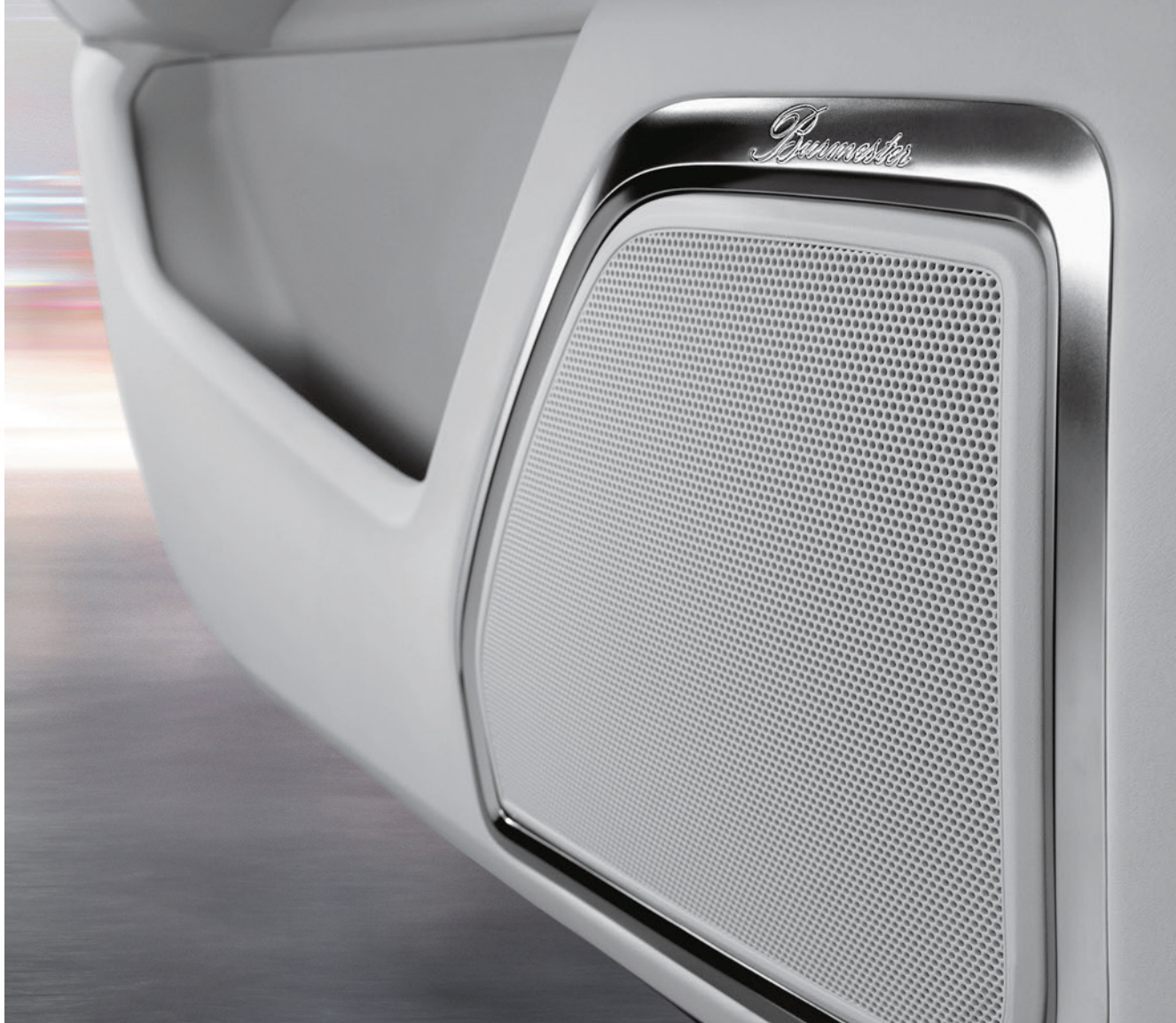
The figures alone sound impressive: 16 amplifier channels with a total output of more than 1000 watts, 16 loudspeakers including an active subwoofer with 300-watt class D amplifier, a total diaphragm surface area of more than 2400 cm², and a frequency response of 30 Hz to 20 kHz.

Crossover technology has been carried over more or less unmodified from Burmester® high-end home audio products. Analogue and digital filters have been optimally defined for their installation location and finely tuned after extensive in-car audio testing. Ribbon tweeters have been used for

unmistakably fine, clear and undistorted high-frequency sound reproduction with excellent level stability.

The elegantly pure design with galvanized surrounds and Burmester® logos on selected loudspeakers make it clear that the exclusive appeal of the Burmester® High-End Surround Sound System is as much about the visual as it is the audio. Uncompromising luxury in sound and style.

Optional for all Macan models.



Burmester® High-End Surround Sound System



Optimized sound distribution in the Macan (figurative illustration)

As if you'd ever get cold feet.

Three-zone automatic climate control

Standard, three-zone automatic climate control provides separate air conditioning in the rear compartment—and a cooling function for the glove compartment. Air conditioning settings in the rear compartment are infinitely variable.

Standard in all Macan models.

Privacy glass

Dark-tinted privacy glass provides additional privacy in the rear compartment.

Thermally/noise insulated glass

Optional: thermally and noise insulated laminated glass for all round more efficient reflection of infrared radiation. Enjoy an even more pleasant climate and peace and quiet in the passenger compartment.

Like privacy glass, the thermally/noise insulated glass also comes tinted at the rear.

Panoramic roof system

The panoramic roof system is a good square meter in size and comprises two large glass panels. Even when closed, it lives up to its name, letting you enjoy a generous panoramic view—but keeping you well protected from the elements at the same time. In addition, the front portion slides open or tilts to a raised position. A roll-up blind shields you from strong sunlight.

Optional for all Macan models.



Climate control buttons in front for automatic climate control



Privacy glass



Panoramic roof system

Comfort lighting package

The comfort lighting package includes dimmable ambient lighting in the door panels, LED lights in place of bulbs, practical LED reading lights for the rear passengers, two vanity lights, additional courtesy lighting in both exterior mirrors, and LED illumination of the footwells.

Optional for all Macan models.

Roll-up sunblind

To protect against sunlight, a mechanical roll-up sunblind is an available option for the rear side windows.

Standard in all Macan models.

Rain sensor

The window wiper system has three wiper speeds and a rain sensor for automatic operation.

Standard in all Macan models.

Porsche Entry & Drive

Porsche Entry & Drive is designed to minimize key use.

As soon as you touch the door handle, Porsche Entry & Drive checks the encrypted access code on the key in your pocket. Once the key is validated, the door unlocks. The engine can then be started and switched off using the ignition key in the normal way.

To lock the vehicle, you simply touch the sensor on the outside of the door handle. Porsche Entry & Drive then locks the vehicle and simultaneously activates the engine immobilizer.

Optional for all Macan models.



Roll-up sunblind



Rain sensor



Comfort lighting package

A passenger that can help control more than the radio.

Assistance systems.

Adaptive cruise control with Porsche Active Safe (PAS)

This system regulates the speed of your vehicle in line with the speed of the vehicle in front, and brakes your vehicle automatically—if necessary, even down to a halt. As soon as the road ahead clears, your vehicle will accelerate back up to the cruising speed originally set. Selectable cruising speeds start at 19 mph. If required, your car can even brake itself to a complete stop behind the vehicle in front in situations such as congested traffic. To pull away again, all it takes is for the driver to give a brief start command using the control lever or accelerator pedal.

Integrated Porsche Active Safe (PAS) is designed to detect whether you are

approaching the vehicle in front too quickly. In this event, you will be prompted to take the necessary action by an audible and visual warning as well as a jolt of the brakes. The system may even boost brake pressure as the situation demands, even to the point of the maximum braking force that the system is able to provide.

Optional for all Macan models.

Lane Change Assist

Lane Change Assist monitors the areas to the rear of the vehicle and the blind spots on either side. Above 19 mph, the system issues a visual warning signal in the exterior mirrors whenever a vehicle rapidly approaches your vehicle from behind or enters one of your blind spots. In this way, Lane Change Assist improves comfort and safety, particularly on

motorways. However, the system does not actively intervene to control the vehicle and can be deactivated at any time.

Optional for all Macan models.

Lane Keep Assist

Lane Keep Assist uses a camera installed in the front end to detect divider line markings on the road. If the car threatens to cross one of the lines, the system steers the vehicle back into the center of the lane. This correction is accompanied by a soft steering pulse. Of course, you are able to override the system at any time.

The function may be deactivated in specific conditions, e.g., bad weather.

Optional for all Macan models.

Lane Departure Warning

A camera inside the rear-view mirror casing monitors the road surface in front of the vehicle. When activated, the system will sound a warning tone whenever you steer towards a divider line marking and threaten to leave the current lane without indicating.

Standard in all Macan models.



Adaptive cruise control



Lane Change Assist



Lane Keeping Assist

ParkAssist

ParkAssist warns you of obstacles detected at the front and rear of the vehicle. Its sensors are integrated harmoniously in the front and rear end. The audible alert is supplemented by a bird's eye graphical representation of the vehicle on the central display screen showing the proximity to these obstacles.

Standard in all Macan models.

Reversing camera

The reversing camera facilitates precise reverse parking and maneuvering and also assists in hitching a trailer. Help is provided in the form of the camera image and the dynamic, superimposed guidelines on the PCM screen, which illustrate the predicted course of the vehicle given the current position of the steering wheel.

Standard in all Macan models.

Surround View

With Surround View, four cameras located in the front end, exterior mirrors, and rear generate an all-round image of the car and its immediate surroundings. In PCM, the driver can choose between a bird's eye view, side view, and corner view.

Optional for all Macan models.

Anti-theft protection

All Macan models are equipped with an engine immobilizer. It works in response to an automatic exchange of data between the key and vehicle electronics. On correct identification, the engine start will be authorized by the engine electronics.

The Macan models can be optionally equipped with an alarm system that includes ultrasonic interior surveillance. In the Macan Turbo, the alarm system is fitted as standard, and ultrasonic interior surveillance can be added on request.

The security system monitors all four doors, the hood, the entire rear hatch, the interior, the ignition, and any trailer you have hitched to the car.

Standard in all Macan models.



ParkAssist including reversing camera and Surround View

You'll be wanting more than just going along for the ride.

Transport.

Luggage compartment

The large luggage compartment of the Macan models is prepared for a wide variety of uses and boasts a capacity of 17.7 cu. ft. A storage compartment to the side offers additional space.

The rear bench seat folds down with a ratio of 40:20:40. With the seats fully folded, the available capacity increases to 53 cu. ft.

To protect against sunlight and offer additional privacy, the luggage compartment is equipped with a removable luggage compartment cover. The optional ski bag is also removable. It can be used

for carrying ski equipment outside the vehicle or simply taken out for cleaning. Practical and hygienic in equal measure.

For loading convenience, the optional air suspension enables you to lower the rear end of the vehicle using a button in the luggage compartment.

The rear hatch features a heated and tinted glass panel. The hatch opens automatically within five seconds at the push of a button. Its adjustable opening height can be memorized so that it stops at a safe distance from your garage ceiling, for example.

Loadspace management system

The loadspace management system lets you partition the luggage compartment to suit your needs. Items are held in place by a rail system with slide-adjustable telescopic rod, a strap roller and four variable lashing eyelets. The reversible mat protects against dirt and helps to prevent luggage displacement. The loadspace partition net provides added safety with the vehicle laden.

Optional for all Macan models.



Example loading arrangement with loadspace management system



Example loading arrangement



Luggage compartment capacity up to 53 cu. ft.



Example loading arrangement

Fortunately, intensity allows for some further expansion.

Roof rails

High-quality roof rails are available in aluminum or with a black painted finish. They blend harmoniously into the vehicle's dynamic design. Roof rails are a prerequisite for installation of the optional roof transport system and are available as a factory-fitted option only.

Optional for all Macan models.

Roof transport system

In conjunction with the optional roof rails, this set of lockable roof bars is compatible with all Porsche roof attachment modules. The load-bearing parts in aluminum are designed to carry a maximum load of 220 lbs. A range of aftermarket attachment modules is available from Porsche Tequipment.

Optional for all Macan models.

Trailer Hitch

The Macan is quite simply the most versatile vehicle we have ever built. This includes the capability of being used as a tow vehicle.

The Towing Package includes trailer receiver without tow ball that accommodates a maximum braked trailer weight of 4409 pounds.

With its exceptional towing capacity, the Macan takes you down the road as perhaps no Porsche has ever before.

Optional for all Macan models.



Roof transport system with ski/snowboard holder (optional Tequipment)



Roof transport system with bicycle rack (optional Tequipment)



Roof rails in aluminum including roof transport system



Power of imagination

There are many ways to paint your life and add a splash of color. That's why the possibilities are almost limitless when it comes to personalization.



**We believe in passion for the sports car.
And for every detail.**

Personalization.

Just imagine if everything were possible. If you could create the sports car of your dreams. Without restriction. With a diverse range of colors. With materials such as aluminum and Carbon Fiber. With extra personality and performance.

Whatever you envisage: we have passion for detail. We believe in the one-of-a-kind, and turn it into reality. Piece by piece. Detail by detail. Nuance by nuance. With experience. With expertise. With the power of imagination—and of the hands.

Adding to one's strengths in the pursuit of a dream is worthwhile. And so is imbuing this dream with individuality and vitality by means of precision craftsmanship. Just as Ferry Porsche did with the first ever Porsche: the 356 no. 1.

Now it's up to you to give your Porsche that one extra thing to make it truly unmistakable: personality. With optional equipment. Or bespoke customizations. Let the following pages fill you with inspiration—and let your creativity run

wild. The possibilities are many. The limits are few and far between. Take Porsche Exclusive Manufaktur as an example, where you can have your Porsche personalized directly on the shop floor. To the ultimate level. And for the most part by hand.

The transition from handicraft to craftsmanship is a fluid one.

Porsche Exclusive Manufaktur.

Our wealth of experience goes back a long way. Since the very beginning, Porsche has been dedicated to giving customers the opportunity to personalize their vehicle as part of our special request service. Known until 1986 as the Porsche Sonderwunschprogramm (Special Wishes Program), today we call it Porsche Exclusive Manufaktur. The philosophy has remained the same. You have our word.

We love what we do. We love our work. Every seam, every square inch of leather, and every single other fine detail receives the same devotion. It's how we bring dreams to life. And how we create something unique. Directly from the Manufaktur.

None of this would be possible without originality, inspiration and enthusiasm, beginning as early as the consultation stage. That's because we keep one thing

in mind above all else: your particular wishes and requirements. We fulfill them with composure and meticulous care, with precision handcrafting and the use of exquisite materials such as Leather, Alcantara®, Carbon Fiber, Mahogany or Aluminum.

Our dedication and finesse add value. In other words, we handcraft a product that blends sporty performance, comfort, and style, and reflects your own personal taste. A Porsche with your signature touch.

We offer a wide range of personalization options, with visual and technical enhancements for the interior and exterior, from a single alteration to extensive modifications. To discover more about Porsche Exclusive Manufaktur, please visit www.porscheusa.com/exclusive or consult your authorized Porsche dealer.



Sport always allows a little more intensity.

The Macan S in Sapphire Blue Metallic.

What can you achieve as a result of broadening your mind and thinking outside the box? A Porsche. Like the Macan S in Sapphire Blue Metallic from Porsche Exclusive.

An extraordinary look: your Macan S in Sapphire Blue Metallic with 21-inch Sport Classic wheels painted in black (high-gloss). Bi-Xenon™ headlights in black and tinted LED taillights are the ideal complement.

Other special features include the SportDesign package painted in black (high-gloss) and the distinctive SportDesign exterior mirrors, while the Sport exhaust system with black Sport tailpipes combines a powerful sound with a masculine appearance.

Black leather dominates the interior of your Macan S. Precisely defined accents in Sapphire Blue Metallic create a masterful contrast. Door sill guards in Carbon Fiber prove that the boundaries of narrow thinking have been left far behind.

- 1 SportDesign package painted in black (high-gloss) with side skirts, SportDesign exterior mirrors, Bi-Xenon™ headlights in black, 21-inch Sport Classic wheels painted in black (high-gloss).
- 2 SportDesign package painted in black (high-gloss) with side skirts, door release levers painted in black (high-gloss), "Porsche" logo and model designation painted, SportDesign exterior mirrors, tinted LED taillights, Sport exhaust system, including Sport tailpipes in black, 21-inch Sport Classic wheels painted in black (high-gloss).
- 3 Interior package painted, instrument dials in white, Sport Chrono stopwatch instrument dial in white, PDK gear selector in aluminum.
- 4 Door sill guards in Carbon Fiber, including loading edge protection.
- 5 Vehicle key painted with key pouch in leather.

Visit www.porscheusa.com/exclusive to discover everything you need to know about configuring a unique vehicle.



Some highly complex precision instruments have been at work here: hands.

The Macan S in Rhodium Silver Metallic.

Exclusivity begins in the most intricate detail: genuinely handcrafted, for instance. But also with creative force and the will to create something unmistakable.

The defining feature of this Macan S in Rhodium Silver Metallic is the SportDesign package with side skirts painted in black (high-gloss). The Bi-Xenon™ headlights in black and tinted LED taillights are equally characteristic.

21-inch Sport Classic wheels painted in black (high-gloss) add another striking detail, while sport car sensations are further intensified by the Sport exhaust system, including Sport tailpipes in black.

Inside, decorative stitching in Garnet Red and seat centers lined with leather in Agate Grey create stylish contrasts. The Porsche Crest on the center console armrest lends even more elegance. Now that's our idea of craftsmanship.



- 1 SportDesign package painted in black (high-gloss) with side skirts, SportDesign exterior mirrors, Bi-Xenon™ headlights in black including Porsche Dynamic Light System (PDLS).
- 2 SportDesign package painted in black (high-gloss) with side skirts, 21-inch Sport Classic wheels painted in black (high-gloss), door release levers painted in black (high-gloss), "Porsche" logo and model designation painted, tinted LED taillights, Sport exhaust system, including Sport tailpipes in black.
- 3 Interior trim package with decorative stitching and seat centers in leather in contrasting color, leather interior package, dashboard trim package in leather, steering column casing in leather, seat belts in Rhodium Silver, Porsche Crest embossed on headrests, PDK gear selector in aluminum.
- 4 Center console armrest in front embossed with Model Logo, PDK gear selector in aluminum.
- 5 Interior trim package with decorative stitching and seat centers in leather in contrasting color, Porsche Crest embossed on headrests, seat belts in Rhodium Silver.

Visit www.porscheusa.com/exclusive to discover everything you need to know about configuring a unique vehicle.

The highest benchmark? The measure of all things.

The Macan S in Palladium Metallic.

The pinnacle of exclusivity and elegance—that is the standard to which the Macan S in Palladium Metallic aspires.

It is resplendent with classy details. A Palladium Metallic paint finish adorns not only the 21-inch Sport Classic wheels, but also the SportDesign package as well as the “Porsche” logo and model designation on the rear. The v-shaped SportDesign exterior mirrors in exterior color further accentuate the elegant look.

Inside, the interior package and the multifunction Sport steering wheel in exquisite Whitewashed Oak take elegance to a new level. Air-vent slats painted in Palladium Metallic are a visual treat. The exclusive theme is perfected by numerous features in sumptuous leather.

Is there any higher form of personalization?



1 SportDesign package with side skirts, SportDesign exterior mirrors, Bi-Xenon™ headlights in black.

2 SportDesign package with side skirts, “Porsche” logo and model designation painted, tinted LED taillights, Sport taillpipes in black, 21-inch Sport Classic wheels painted.

3 Whitewashed Oak interior package, heated multifunction Sport steering wheel in Whitewashed Oak, air-vent slats painted in Palladium Metallic, PDK gear selector in aluminum, dashboard trim package in leather.

Visit www.porscheusa.com/exclusive to discover everything you need to know about configuring a unique vehicle.



**Resist conformity.
Personalize.**

Intensity can be felt in many ways. The extensive color palette comprises a total of 11 exterior colors with a choice from two solid colors, eight metallic colors and

one special color. Then there are five interior colors, four two-tone leather interior combinations, and one two-tone finish as part of the leather package.

No fewer than six interior packages complete the selection: Piano Finish Black, Brushed Aluminum, Black Brushed

Aluminum¹, Carbon Fiber, Dark Walnut and Whitewashed Oak.

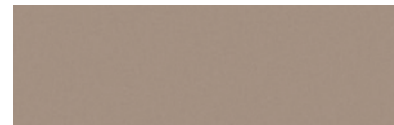
Solid exterior colors



Black



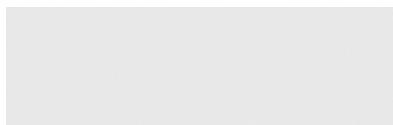
Jet Black Metallic



Palladium Metallic



Rhodium Silver Metallic



White



Volcano Grey Metallic



Night Blue Metallic



Carrara White Metallic



Special exterior color



Carmine Red^{1,2}



Mahogany Metallic



Sapphire Blue Metallic



¹ Exclusive to Macan GTS.

² Available from 11/2016 for all models.

Standard interior colors

Dashboard/trim/seats



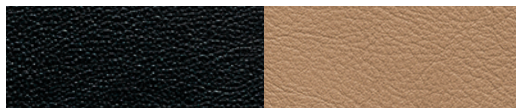
Black



Agate Grey



Luxor Beige¹



Black and Luxor Beige

Natural leather interior

Dashboard/trim/seats



Leather interior: Espresso

Standard interior colors:

leather interior/leather package⁴

Dashboard/trim/seats



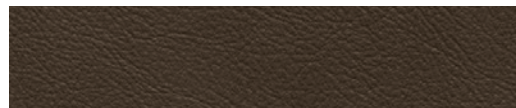
Leather package/leather interior: Black
GTS leather package/leather interior, including items in Alcantara®: Black



Leather package/leather interior: Agate Grey
GTS leather package/leather interior, including items in Alcantara®: Agate Grey



Leather package/leather interior: Luxor Beige¹
GTS leather package/leather interior, including items in Alcantara®: Luxor Beige¹



Leather interior: Saddle Brown
GTS leather interior, including items in Alcantara®: Saddle Brown

Turbo interior package^{2,9}



Turbo interior package (Black) with contrasting items in Garnet Red



Turbo interior package (Black) with contrasting items in Rhodium Silver

GTS interior package^{3,8}



GTS interior package (Black) with contrasting items in Carmine Red

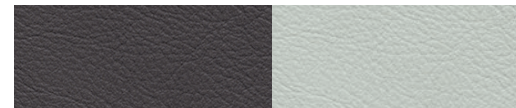


GTS interior package (Black) with contrasting items in Rhodium Silver

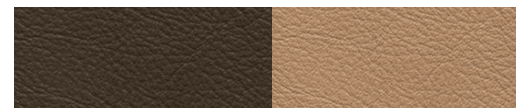
Two-tone interior:

leather interior/leather package⁴

Dashboard/trim/seats



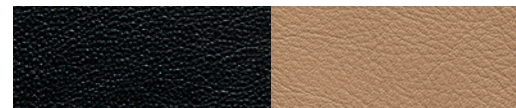
Leather interior: Agate Grey and Pebble Grey
(roof lining and carpet⁵: Agate Grey)



Leather interior: Saddle Brown and Luxor Beige¹
(roof lining and carpet⁵: Saddle Brown)



Leather interior/leather package: Black and Garnet Red
(roof lining and carpet⁵: Black)



Leather interior/leather package: Black and Luxor Beige
(roof lining and carpet⁵: Black)

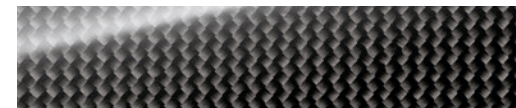
Finishes



Black



Piano Finish Black



Carbon Fiber

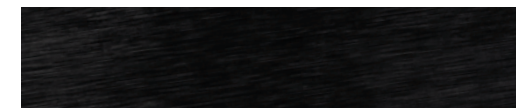


Whitewashed Oak^{6,7}

Exclusive



Brushed Aluminum



Brushed Aluminum in Black⁸



Dark Walnut^{6,7}

¹ Glass is reflective. Certain lighting conditions may cause a lighter color dashboard to produce a noticeable reflection on the inside of the windshield. To make certain that you are satisfied with your selection, ask your Porsche dealer to arrange a test drive experience in a variety of conditions, including with use of polarized sunglasses.

² The Turbo interior package is available only with the use of Alcantara® on the seat centers front and rear, on the door armrests front and rear and on the center console armrest.

³ The GTS interior package is available with the use of Alcantara® on the seat centers front and rear, on the door armrests front and rear and on the center console armrest. Alternatively, leather is available in lieu of Alcantara®.

⁴ The leather package (partial leather interior) incorporates a leather lining on the dashboard, center console storage compartment lid, seat centers, inner seat bolsters, seat headrests, armrests, door panels and door pulls. In conjunction with a two-tone color combination, leather items are in a contrasting color.

⁵ Carpet in luggage compartment in darker color.

⁶ Also available as decorative steering wheel.

⁷ Since wood is a natural product, there may be variations in color and grain.

⁸ Only available for the Macan GTS.

⁹ Only available for the Macan Turbo.



Two-tone interior combination of Agate Grey and Pebble Grey with Carbon Fiber finish



Two-tone interior combination of Black and Luxor Beige with Piano Finish Black



Interior in Agate Grey with Piano Finish Black



GTS interior package in Carmine Red with Black Brushed Aluminum finish



Two-tone interior combination of Saddle Brown and Luxor Beige with Piano Finish Black



Interior in Espresso with Brushed Aluminum finish



Interior in Luxor Beige¹ with Piano Finish Black



GTS interior package in Rhodium Silver with Black Brushed Aluminum finish



Two-tone interior combination of Black and Garnet Red with Piano Finish Black



Interior in Saddle Brown with Piano Finish Black



Interior in Black with Piano Finish Black

¹ Glass is reflective. Certain lighting conditions may cause a lighter color dashboard to produce a noticeable reflection on the inside of the windshield. To make certain that you are satisfied with your selection, ask your Porsche dealer to arrange a test drive experience in a variety of conditions, including with use of polarized sunglasses.

Possible interior colors



Turbo interior package in Garnet Red with Carbon Fiber finish



Turbo interior package in Rhodium Silver with Carbon Fiber finish

Side blades



Side blade in Lava Black



Side blade in exterior color



Side blade in Carbon Fiber



Side blade in black (high-gloss) (Turbo exterior package)



Side blade in matte black with "GTS" logo



Side blade in Carbon Fiber with "GTS" logo

Interior combinations



Carbon Fiber finish, interior in Black



Brushed Aluminum finish, interior in Saddle Brown



Walnut finish, interior in Black



Piano finish, interior in Agate Grey



Turbo exterior package



Turbo interior package



Air suspension



Porsche Torque Vectoring Plus (PTV Plus)



Real-time traffic information and Google® Earth screen



Sport Chrono Package



LED headlight with PDLS Plus



Porsche Ceramic Composite Brake (PCCB)



Exclusive

Tinted LED taillights (page 106)



Exclusive

Sport exhaust system including Sport tailpipes in black (page 106)



Exclusive

Interior package painted (page 106)



Exclusive

SportDesign exterior mirror (page 106)



Exclusive

SportDesign package painted in black (high-gloss) (page 106)



Exclusive

21-inch Sport Classic wheel painted in black (high-gloss) (page 53)



Exclusive

Center console armrest in front with model logo (page 133)



Exclusive

Running boards (page 125)



Stainless steel skid plate (front)



Stainless steel skid plate (rear)

Option	Macan Turbo	Macan GTS	Macan S	Macan	I no.	Page
Exterior						
Metallic paint	○	○	○	○	Code	112
Special color: Carmine Red	○	○ ¹	○	○	Code	112
Side blades in Lava Black	–	–	●	●		118
Side blades painted in exterior color	●	○ ²	○	–	6H1	118
Side blades in matte black with “GTS” logo in gloss black	–	●	–	–		118
Side blades in Carbon Fiber	○	○ ²	○	○	6H3	118
Stainless steel skid plate (front)	○	–	○	○	2JC	124
Stainless steel skid plates (front and rear)	○	–	○	○	2JX	124
Thermally and noise insulated glass	○	○	○	○	VW5	88
Panoramic roof system	○	○	○	○	3FU	88
Roof rails in aluminum ³	○	–	○	–	3S1	98
Roof rails painted in black ³	○	○	○	○	3S5	98
Roof rails in aluminum with roof transport system ³	○	–	○	○	5W1	98
Roof rails painted in black with roof transport system ³	○	○	○	○	5W4	98
Side window trim in aluminum	●	–	●	–	QJ2	28
Side window trim in black (high-gloss)	○	●	○	○	QJ4	28
Deletion of model designation	□	□	□	□	ONA	
SportDesign package with side skirts	–	●	○	○	2D1	108
Exclusive						

– Not available ○ I number/extra-cost option ● Standard equipment □ Available at no extra cost
For more information on the options featured in this catalog, please refer to the separate price list.

Option	Macan Turbo	Macan GTS	Macan S	Macan	I no.	Page
Exterior						
SportDesign package without side skirts	○	–	○	○	2D2	
Exclusive						
SportDesign package painted in black (high-gloss) with side skirts	–	–	○	○	2D5	108
Exclusive						
SportDesign package painted in black (high-gloss) without side skirts	○	–	○	○	2D6	
Exclusive						
SportDesign side skirts	●	●	○	○	VR4	
Exclusive						
Running boards	○	–	○	○	VR1	123
Exclusive						
SportDesign exterior mirrors	○	○	○	○	6FB	123
Exclusive						
Air-intake grilles painted in black (high-gloss)	○	–	○	○	AAP	6
Exclusive						
Door handles in black (high-gloss)	○	○	○	○	6JA	
Exclusive						
Lower rear fascia painted	●	●	○	○	2D7	125
Exclusive						
“Porsche” logo and model designation painted	○	○	○	○	AAT	
Exclusive						
“Porsche” logo painted	○	○	○	○	AAU	
Exclusive						

¹ Available from 11/2016 at the earliest.
² For Macan GTS with “GTS” logo in glossy black.
³ Only available as a factory-fitted option.



Exclusive SportDesign package painted in black (high-gloss) with side skirts



Exclusive Lower rear fascia painted



Exclusive Bi-Xenon™ headlights in black including Porsche Dynamic Light System (PDLS)



Exclusive Tinted LED taillights

Option	Macan Turbo	Macan GTS	Macan S	Macan	I no.	Page
Exterior						
Turbo exterior package ¹	<input type="radio"/>	<input type="radio"/>	<input type="radio"/>	<input type="radio"/>	PZ0	22
Porsche Entry & Drive	<input type="radio"/>	<input type="radio"/>	<input type="radio"/>	<input type="radio"/>	4F2	90
Automatically dimming mirrors	<input type="radio"/>	<input type="radio"/>	<input type="radio"/>	<input type="radio"/>	PA1/PA2	
Surround View	<input type="radio"/>	<input type="radio"/>	<input type="radio"/>	<input type="radio"/>	8A4	94
Bi-Xenon™ headlights with Porsche Dynamic Light System (PDLS)	<input checked="" type="radio"/>	<input type="radio"/>	<input type="radio"/>	<input type="radio"/>	8JE	68
Bi-Xenon™ headlights in black with Porsche Dynamic Light System (PDLS)	<input type="radio"/>	<input checked="" type="radio"/>	<input type="radio"/>	<input type="radio"/>	8EF	68
Exclusive						
LED headlights with Porsche Dynamic Light System Plus (PDLS Plus)	<input type="radio"/>	<input type="radio"/>	<input type="radio"/>	<input type="radio"/>	8EX	66
Tinted LED taillights	<input type="radio"/>	<input checked="" type="radio"/>	<input type="radio"/>	<input type="radio"/>	8SB	68
Exclusive						
Fuel filler cap in aluminum look	<input type="radio"/>	<input type="radio"/>	<input type="radio"/>	<input type="radio"/>	2W6	
Exclusive						

¹ Comprising: exterior package in black (high-gloss), SportDesign exterior mirrors, Side blades in black (high-gloss), wheel centers with full-color Porsche Crest, exclusive 21-inch 911 Turbo Design wheels in two-tone combination black, LED headlights with PDLS Plus, air intakes painted in black (high-gloss), rear spoiler in exterior color, tinted LED taillights, Sport exhaust system with Sport tailpipes in black, rear fascia in black (high-gloss).

² You will find an overview of all wheel designs and tires on pages 52–53.

Option	Macan Turbo	Macan GTS	Macan S	Macan	I no.	Page
Wheels²						
18-inch Macan wheels	<input type="radio"/>	<input type="radio"/>	<input type="checkbox"/>	<input checked="" type="radio"/>	C7N	52
18-inch Macan S wheels	<input type="radio"/>	<input type="radio"/>	<input type="checkbox"/>	<input type="radio"/>	C5F	53
19-inch Macan Turbo wheels	<input checked="" type="radio"/>	<input type="checkbox"/>	<input type="radio"/>	<input type="radio"/>	C6P	52
19-inch Macan Design wheels	<input type="radio"/>	<input type="checkbox"/>	<input checked="" type="radio"/>	<input type="radio"/>	C6X	53
20-inch RS Spyder Design wheels	<input type="radio"/>	<input type="checkbox"/>	<input type="radio"/>	<input type="radio"/>	CY3	53
20-inch RS Spyder Design wheels in Satin Black	<input type="radio"/>	<input checked="" type="radio"/>	<input type="radio"/>	<input type="radio"/>	41L	53
20-inch Macan SportDesign wheels	<input type="radio"/>	<input type="checkbox"/>	<input type="radio"/>	<input type="radio"/>	CY4	52
21-inch 911 Turbo Design wheels	<input type="radio"/>	<input type="radio"/>	<input type="radio"/>	<input type="radio"/>	C7T	53
21-inch Sport Classic wheels	<input type="radio"/>	<input type="radio"/>	<input type="radio"/>	<input type="radio"/>	C9K	
Exclusive						
21-inch Sport Classic wheels painted	<input type="radio"/>	<input type="radio"/>	<input type="radio"/>	<input type="radio"/>	V39	
Exclusive						
21-inch Sport Classic wheels painted in black (high-gloss)	<input type="radio"/>	<input type="radio"/>	<input type="radio"/>	<input type="radio"/>	V95	53
Exclusive						
21-inch Sport Classic wheels painted in Satin Platinum	<input type="radio"/>	<input type="radio"/>	<input type="radio"/>	<input type="radio"/>	V96	127
Exclusive						
Summer tires for 18-inch alloy wheels	<input type="radio"/>	<input type="radio"/>	<input type="checkbox"/>	<input type="checkbox"/>	H3Q	
Summer tires for 19-inch alloy wheels	<input type="checkbox"/>	<input type="checkbox"/>	<input type="checkbox"/>	<input type="checkbox"/>	H6J	
Summer tires for 20-inch alloy wheels	<input type="checkbox"/>	<input type="checkbox"/>	<input type="checkbox"/>	<input type="checkbox"/>	H6N	
18-inch collapsible spare wheel	<input checked="" type="radio"/>	<input checked="" type="radio"/>	<input checked="" type="radio"/>	<input checked="" type="radio"/>	1G1	
19-inch collapsible spare wheel	<input type="radio"/>	<input type="radio"/>	<input type="radio"/>	<input type="radio"/>	1G4	
Wheel centers with full-color Porsche Crest	<input type="radio"/>	<input checked="" type="radio"/>	<input type="radio"/>	<input type="radio"/>	1NP	127

– Not available I number/extra-cost option Standard equipment Available at no extra cost
For more information on the options featured in this catalog, please refer to the separate price list.



Exclusive 21-inch Sport Classic wheel painted in Satin Platinum



Wheel centers with full-color Porsche Crest



Exclusive

Sport tailpipes in silver color



Sport Chrono Package

Option	Macan Turbo	Macan GTS	Macan S	Macan	I no.	Page
Engine, transmission and chassis						
Porsche Torque Vectoring Plus (PTV Plus)	○	○	○	○	1Y1	50
Porsche Active Suspension Management (PASM) ¹	●	●	○	○	1BH	46
Air suspension with leveling system and ride-height adjustment with Porsche Active Suspension Management (PASM) ²	○	●	○	○	1BK	46
Sport tailpipes in silver	○	–	○	○	OP3	128
Exclusive						
Sport tailpipes in black	○	–	○	○	OP6	43
Exclusive						
Sport exhaust system with Sport tailpipes in silver color	○	–	○	○	OP8	42
Exclusive						
Sport exhaust system with Sport tailpipes in black	○	●	○	○	OP9	42
Exclusive						
Sport Chrono Package	○	○	○	○	QR4/QR5	50
Porsche Ceramic Composite Brake (PCCB)	○	○	○	–	PB2	56

– Not available ○ I number/extra-cost option ● Standard equipment □ Available at no extra cost
For more information on the options featured in this catalog, please refer to the separate price list.

Option	Macan Turbo	Macan GTS	Macan S	Macan	I no.	Page
Interior						
“GTS” Sport seats with eight-way adjustment for driver and front passenger with “GTS” logos on front headrests and outer rear seats	–	●	–	–		74
Driver memory package	–	●	●	○	3PH	72
14-way Comfort memory package ³	□	–	○	○	PE5/QJ2	74
14-way Comfort memory package with “GTS” logos on front headrests and outer rear seats ³	–	○ ⁵	–	–	PE5	
18-way Adaptive Sport Seats with comfort memory package ⁴	●	–	○	○	PE6	74
18-way Adaptive Sport Seats with comfort memory package with “GTS” logos on front headrests and outer rear seats ⁴	–	○	–	–		
Seat heating (front)	●	●	○	○	4A3	74
Seat heating (front and rear)	○	○	○	○	4A4	74
Seat ventilation (front) ⁵	○	○ ⁶	○	○	4D3	74
Seat belts colored	○	○	○	○		129
Exclusive						
– Luxor Beige						FZ3
– Saddle Brown						F11
– Espresso						F13
– Garnet Red						F12
– Pebble Grey						F14
– Agate Grey						F10

¹ For the Macan GTS, ride height lowered by 15 mm as standard.

² For the Macan GTS, ride height lowered by 10 mm.

³ Comprising electric seat cushion depth adjustment and four-way lumbar support for driver and front passenger, electric adjustment of the steering column and mirror courtesy lighting. Includes memory for storing personalized settings for driver and front passenger seat, steering column and exterior mirror positions, and more.

⁴ Sporty seat design featuring distinctive seam pattern on the seat centers and with elevated side bolsters. Personalized electric adjustment and storage as available with the comfort memory package. Also includes electric adjustment of the bolsters on the seat cushions and backrests (front). The rear bench seat is also designed with a sporty look. Note: elevated side bolsters result in a tilt angle of approximately 15 degrees relative to the luggage compartment floor with the rear seats folded down.

⁵ Seat ventilation not compatible with seat centers in Alcantara®.

⁶ Only available in conjunction with GTS interior package without items in Alcantara®, leather package or leather interior.



18-way Adaptive Sport Seats with comfort memory package



Exclusive

Seat belts in Pebble Grey



Loadspace management system



Adaptive cruise control including Porsche Active Safe (PAS)

Option	Macan Turbo	Macan GTS	Macan S	Macan	I no.	Page
Interior						
Steering wheel heating	●	○	○	○	2ZH	74
Adaptive cruise control with Porsche Active Safe (PAS)	○	○	○	○	8T3	92
Lane Departure Warning	●	●	●	●		92
Lane Keep Assist	○	○	○	○	7Y2/7Y3	92
Lane Change Assist	○	○	○	○	7Y7	92
Alarm system with ultrasonic interior surveillance	●	●	●	●	7AC	94
Mechanical roll-up sunblind for rear side windows	○	○	○	○	3Y4	90
Comfort lighting package	●	●	●	●	PP7/PP8	90
Storage package	●	●	●	●	QE1	
Smoking package	□	□	□	□	9JB	
Ski bag	○	○	○	○	3X1	76
Loadspace management system	○	○	○	○	3GN	96

– Not available ○ I number/extra-cost option ● Standard equipment □ Available at no extra cost
For more information on the options featured in this catalog, please refer to the separate price list.

Option	Macan Turbo	Macan GTS	Macan S	Macan	I no.	Page
Interior						
Piano Finish Black interior package	□	□	●	●	5TL	115
Air vent slats painted	○	○	○	○	AVF	131
Exclusive						
Instrument dials colored	○	○	○	○		106
Exclusive						
– Luxor Beige						7V4
– Garnet Red						7V7
– White						7V3
Compass instrument dial colored	○	○	○	○		
Exclusive						
– Luxor Beige						UP4
– Garnet Red						UP5
– White						UP3
Sport Chrono stopwatch instrument dial colored	○	○	○	○		106
Exclusive						
– Luxor Beige						UP4
– Garnet Red						UP5
– White						UP3
Vehicle key painted with key pouch in leather	○	○	○	○	BFS	106
Exclusive						



Exclusive Air vent slats painted, Sport Chrono stopwatch instrument dial in white



Exclusive Instrument dials in white



Exclusive Porsche Crest embossed on headrests



Exclusive Center console armrest in front embossed with Porsche Crest



Exclusive Leather package

Option	Macan Turbo	Macan GTS	Macan S	Macan	I no.	Page
Interior: leather						
Leather package	●	□	○	○	Code	114
Leather package with Alcantara®	–	●	–	–	Code	114
Leather Interior	○	○	○	○	Code	114
Leather interior, two-tone	○	○	○	○	Code	115
Natural Leather Interior	○	○	○	○	Code	114
GTS Leather interior package with Alcantara®	–	○	–	–	Code	114
GTS Leather interior package without Alcantara®	–	○	–	–	Code	114
Turbo interior package ¹	○	–	–	–	TS/TR	114
Deviated stitching package Exclusive	○	○	○	○	AZD	108
Deviated seat centers Exclusive	○	○	○	○	AZB	108
Deviated Stitching Package and Deviated Seat Centers Exclusive	○	○	○	○	AZE	108
Leather interior package Exclusive	○	○	○	○	APL	108

¹ Comprising leather interior in black with or without items in Alcantara® and with contrasting items in Carmine Red or Rhodium Silver.
² Macan: "Macan". Macan S: "Macan S". Macan GTS: "Macan GTS". Macan Turbo: "Turbo".

Option	Macan Turbo	Macan GTS	Macan S	Macan	I no.	Page
Interior: leather						
Extended Interior Package, Dashboard Trim in Leather Exclusive	○	○	○	○	AZW	108
Porsche Rear Seat Entertainment in leather Exclusive	○	○	○	○	AHT	84
Air vents in leather Exclusive	○	○	○	○	AVJ	
Rear-view mirror in leather Exclusive	○	○	○	○	AVW	133
Seat consoles in leather Exclusive	○	○	○	○	ALS	
Sun visors in leather Exclusive	○	○	○	○	ADG	
Steering column casing in leather Exclusive	○	○	○	○	ALL	133
Porsche Crest embossed on headrests (front seats) Exclusive	○	–	○	○	3J7	108
Porsche Crest embossed on headrests (front and outer rear seats) Exclusive	○	○	○	○	5ZF	108
Center console armrest in front embossed with Porsche Crest Exclusive	○	○	○	○	6F6	132
Center console armrest in front embossed with model logo ² Exclusive	○	○	○	○	6F8	

– Not available ○ I number/extra-cost option ● Standard equipment □ Available at no extra cost
 For more information on the options featured in this catalog, please refer to the separate price list.



Exclusive Rear-view mirror in leather



Exclusive Steering column casing in leather



Exclusive Personalized floor mats with leather edging



Exclusive Personalized reversible luggage compartment mat with leather edging, including loading edge protection

Option	Macan Turbo	Macan GTS	Macan S	Macan	I no.	Page
Interior: Leather						
Personalized floor mats with leather edging Exclusive	<input type="radio"/>	<input type="radio"/>	<input type="radio"/>	<input type="radio"/>	AFX	134
Personalized reversible luggage compartment mat with leather edging, including loading edge protection Exclusive	<input type="radio"/>	<input type="radio"/>	<input type="radio"/>	<input type="radio"/>	AFZ	134
Interior: Wood						
Dark Walnut interior package ¹	<input type="checkbox"/>	<input type="checkbox"/>	<input type="radio"/>	<input type="radio"/>	5MP	115
Heated multifunction Sport steering wheel in Dark Walnut ¹	<input type="radio"/>	<input type="radio"/>	<input type="radio"/>	<input type="radio"/>	1XG	
Whitewashed Oak interior package Exclusive	<input type="radio"/>	<input type="radio"/>	<input type="radio"/>	<input type="radio"/>	7TK	110
Heated multifunction Sport steering wheel in Whitewashed Oak Exclusive	<input type="radio"/>	<input type="radio"/>	<input type="radio"/>	<input type="radio"/>	1XA	110
Interior: Alcantara®						
Roof lining in Alcantara®	<input checked="" type="radio"/>	<input type="radio"/>	<input type="radio"/>	<input type="radio"/>	6NN	

– Not available I number/extra-cost option Standard equipment Available at no extra cost
For more information on the options featured in this catalog, please refer to the separate price list.

Option	Macan Turbo	Macan GTS	Macan S	Macan	I no.	Page
Interior: Aluminum						
Brushed Aluminum interior package	<input checked="" type="radio"/>	<input checked="" type="radio"/>	<input type="radio"/>	<input type="radio"/>	5TE	115
Brushed Aluminum interior package in black	–	<input type="checkbox"/>	–	–	5TH	115
PDK gear selector in aluminum Exclusive	<input type="radio"/>	<input type="radio"/>	<input type="radio"/>	<input type="radio"/>	7F4	106
Door sill guards in Brushed Aluminum, illuminated ² Exclusive	<input type="radio"/>	<input type="radio"/>	<input type="radio"/>	<input type="radio"/>	VT2	135
Personalized door sill guards in Brushed Aluminum, illuminated Exclusive	<input type="radio"/>	<input type="radio"/>	<input type="radio"/>	<input type="radio"/>	ATV	
Interior: Carbon Fiber						
Carbon Fiber interior package	<input type="radio"/>	<input type="radio"/>	<input type="radio"/>	<input type="radio"/>	5MH	
Heated multifunction Sport steering wheel in Carbon Fiber	<input type="radio"/>	<input type="radio"/>	<input type="radio"/>	<input type="radio"/>	2FX	
Door sill guards ³ in Carbon Fiber, including loading edge protection Exclusive	<input type="radio"/>	<input type="radio"/>	<input type="radio"/>	<input type="radio"/>	7M3	106
Door sill guards ² in Carbon Fiber, illuminated, including loading edge protection Exclusive	<input type="radio"/>	<input type="radio"/>	<input type="radio"/>	<input type="radio"/>	7M8	
Personalized door sill guards in Carbon Fiber, illuminated, including loading edge protection Exclusive	<input type="radio"/>	<input type="radio"/>	<input type="radio"/>	<input type="radio"/>	ATW	

¹ Since wood is a natural product, there may be variations in color and grain.

² Macan: "Macan". Macan S: "Macan S". Macan GTS: "Macan GTS". Macan Turbo: "Macan Turbo". In the Macan GTS, the "GTS" part of the logo is illuminated in red.

³ Macan: "Macan". Macan S: "Macan S". Macan GTS: "Macan GTS". Macan Turbo: "Macan Turbo". In the Macan GTS, the "GTS" part of the logo is in red.



Exclusive Door sill guards in Carbon Fiber, including loading edge protection



Exclusive Door sill guards in Brushed Aluminum, illuminated



Burmester® High-End Surround Sound-System



6-disc CD/DVD changer

Option	Macan Turbo	Macan GTS	Macan S	Macan	I no.	Page
Audio and communication						
Porsche Communication Management (PCM) system ¹	–	●	●	●		78
Porsche Communication Management (PCM) system with navigation module ¹	●	○	○	○	7UG	78
Connect module	–	○	○	○	Code	80
Connect Plus module ²	○	○	○	○	Code	80
Bose® Surround Sound-System ³	●	○	○	○	9VL	84
Burmester® High-End Surround Sound-System ³	○	○	○	○	9VJ	86
6-disc CD/DVD changer ¹	○	○	○	○	6G2	136

– Not available ○ I number/extra-cost option ● Standard equipment □ Available at no extra cost
For more information on the options featured in this catalog, please refer to the separate price list.

Option	Macan Turbo	Macan GTS	Macan S	Macan	I no.	Page
Audio and communication						
Electronic logbook	○	○	○	○	9NY	78
Compass display on dashboard	○	○	○	○	QR1	137
Porsche Rear Seat Entertainment Exclusive	○	○	○	○	AHR	84
Porsche Rear Seat Entertainment Plus Exclusive	○	○	○	○	AHS	84
Factory collection.						
Macan factory collection ⁴	□	□	□	□	SZ8/S9Y	141
PEC Atlanta Delivery	□	□	□	□	ZAT	142

¹ May be incompatible with some copy-protected CDs.

² Only available in conjunction with PCM with navigation module.

³ Luggage compartment capacity reduced by subwoofer under luggage compartment floor.

⁴ Non-binding limited offer. For the latest information on availability, please consult your authorized Porsche dealer.



Compass display on dashboard



Exclusive

Porsche Rear Seat Entertainment Plus

Porsche Tequipment — accessories developed for 365 days full of life.

With the Porsche Tequipment range of accessories developed specifically for your Macan, you can style it entirely to your own preference. From the start, the same rules that apply to our vehicles also apply to the products of Porsche Tequipment: developed, tested, and proven at the Development Center in Weissach by the same Porsche engineers and designers who made your car. Designed with the complete vehicle in mind and precisely tailored to your Porsche.

And your original car warranty? It will remain completely intact, whichever Tequipment products you ask your authorized Porsche dealer to fit.

To discover more about Porsche Tequipment, please consult your authorized Porsche dealer. Alternatively, all Tequipment products can be found online at www.porscheusa.com/tequipment using our “Tequipment accessories finder”.

[1] Roof boxes

Lockable plastic roof boxes in black (high-gloss) or platinum look, with a capacity of approximately 11 or 17.5

[2] Cargo liners

These made-to-measure plastic liners protect the luggage compartment from dirt and damage.

[3] All-weather floor mats

In an appealing design featuring the Macan silhouette and the “Porsche” logo.

[4] Winter wheel and tire sets

For enhanced individuality, agility and safety. And even greater driving pleasure.

[5] Child seats

Distinctively designed, and specially tested and approved for Porsche cars.

[6] Car care set

Interior and exterior care products optimally selected and formulated for your Porsche.



1



2



3



4



5



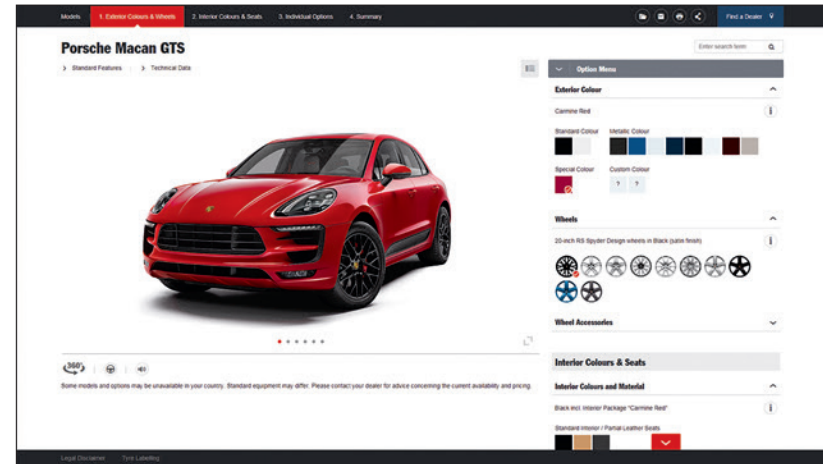
6

Porsche Car Configurator.

Intensity in motion—and a definite driving force in creative styling. With the new Porsche Car Configurator, you will see quickly and intuitively which design for your chosen Macan model suits you best. On the way to realizing your dream car, you can now create your own personalized configuration not only on your desktop and tablet, but also on your smartphone. Your car can be displayed in the perspectives of your choice and with

3D animations. Tailored recommendations along the way help you make those all-important decisions. Visit www.porscheusa.com to find the Porsche Car Configurator and discover much more about the fascination of Porsche.

In the midst of life. And never far from reach. Whether on the road or online. With easy access to social networks, you've got flexibility—no matter where you are.



www.porscheusa.com/macan



facebook.com/porsche



youtube.com/user/porsche



twitter.com/porsche



instagram.com/porsche



pinterest.com/porsche



plus.google.com/+porsche

Designing your Porsche.

Consultation

At your authorized Porsche dealer, we're on hand to answer all your questions about your new Porsche. Of course, the same applies to the personalization options of Porsche Exclusive.

In our customer centers in Zuffenhausen, as well as Leipzig and in our Porsche Exclusive – Personal Design Studios in Atlanta, Georgia and Beverly Hills, California, we will show you what else can be done. Here, you can select your materials and paint colors and plan your vehicle in detail using the Porsche Car Configurator. In order to book an appointment with one of our Design Specialists, please email PersonalDesign@porsche.us or visit us online at www.porscheusa.com/exclusive.

Factory collection

Once the planning is over, the anticipation begins—looking forward to the day of

delivery. The Porsche factory collection makes this an event to cherish even more. Stuttgart or Leipzig or even our new Atlanta facility? These venues hold their own special allure.

In Stuttgart-Zuffenhausen, you can experience and learn about every aspect of the legendary Porsche brand. In addition to receiving the detailed lowdown on your car, you will also gain insight into the entire history of Porsche with a visit to the Porsche Museum. Legendary models from a sports car history spanning more than six decades await.

At our Leipzig location, you're going to take to the starting grid—in a Porsche model identical to the one you purchased and under the expert supervision of one of our instructors. During the drive, they will demonstrate all the functions of your new Porsche. And, indeed, the potential

that lies within. On-road on the racetrack. Or off-road, on our very own off-road track.

Whichever location you choose, your itinerary includes a guided factory tour, a stylish lunch and, of course, the moment you've been waiting for: taking delivery of your Porsche.

The new Porsche Experience Center in Atlanta, now offers new vehicle delivery at this location with a complete immersion into the Porsche experience. To arrange a date for your factory collection experience, please consult your authorized Porsche dealer.



Porsche Exclusive consultation

Panorama

Introducing The Porsche Experience Center Atlanta*

Since the beginning, Porsche has been devoted to delivering the most exceptional experiences in the world. The new Porsche Experience Center in Atlanta offers a complete immersion into the Porsche experience. And opening in fall 2016, the Porsche Experience Center Los Angeles will offer guests an opportunity to increase their driving prowess with challenging test tracks and training facilities. Visit www.porschedriving.com or call 1-800-Porsche to learn more.



Porsche European Delivery

Imagine touring the original factory and then being handed the keys for an even more gratifying opportunity—touring Europe in your brand new Porsche vehicle. What happens next is up to you. Contact your authorized Porsche dealer for more information.

Porsche Assistance

Enjoy peace of mind with our exclusive breakdown and accident recovery service. Membership is free when you buy a new Porsche vehicle.



Porsche Exclusive*

Realize your vision of the perfect Porsche with our factory customization program. From styling enhancements to performance upgrades, all modifications are uniquely handcrafted for your Porsche vehicle. Please visit www.porscheusa.com/exclusive for more information.

Porsche Approved Certified Pre-Owned

Only the best Porsche cars earn the right to be called “Certified”. A meticulous 111-point inspection, a 2-year or 50000-mile Limited Warranty, and 24-hour Roadside Assistance make this program one-of-a-kind. Contact your authorized Porsche dealer for details.



Porsche Tequipment*

Personalize your Porsche vehicle at any time after purchase with our range of aftermarket accessories. You will also find all our available products online at www.porscheusa.com/tequipment.

Porsche Financial Services

Our range of financial services is innovative and specially tailored to the needs of Porsche owners. If you dream Porsche, Porsche Financial Services offers you the perfect financing solution to get your dream. For more information visit www.porscheusa.com/financialservices or your authorized Porsche dealer.



Porsche Driver's Selection*

With products ranging from fashion and accessories to tailored luggage, this unique collection combines quality and style with everyday practicality. Visit your authorized Porsche dealer or shop online at www.porscheusa.com/shop.

Christophorus

Our bimonthly magazine for Porsche owners has news, interviews and a wide variety of features from throughout the world of Porsche.



Porsche Travel Club

Embark on a thrilling adventure and feel the power of Porsche. Stay in top-class hotels and dine in five-star restaurants worldwide. Visit www.porsche.com/china/en/motorsportandevents/porscheclubs/ for more information.

Porsche Classic

Your specialized source for genuine Porsche parts as well as restoration services for all Porsche classics. Visit www.porscheusa.com/classic to find out more.



Porsche Sport Driving School

Develop your skill and explore your Porsche with the Porsche Sport Driving School. Learn about events at some of the world's most famous racing venues at www.porschedriving.com.

Porsche Museum

More than 80 vehicles at our headquarters in Stuttgart-Zuffenhausen await to take you on a journey through Porsche history. See icons such as the 356, 911, and 917 presented in an atmosphere you can't experience anywhere else.



Porsche Clubs

Since the first Porsche Club was founded in 1952, its number has grown to 660 chapters, with a total of 195000 members worldwide. To find out more, go to www.porscheusa.com/porscheclub.

Porsche Online

Go to www.porscheusa.com for all the latest news and information from Porsche.

Follow us on:   



*You can obtain the latest brochures for Porsche Exclusive, Porsche Tequipment, Porsche Driver's Selection and Porsche Driving Experience from your authorized Porsche dealer.

Technical data

Engine/performance	Macan Turbo	Macan GTS	Macan S	Macan
Cylinders	6	6	6	4
Displacement	3.6 liters	3.0 liters	3.0 liters	2.0 liters
Max. power (DIN) at rpm	400 hp at 6000 rpm	360 hp at 6000 rpm	340 hp between 5500–6500 rpm	252 hp between 5000 and 6800 rpm
Max. torque at rpm	406 lb.-ft. between 1350–4500 rpm	369 lb.-ft. between 1650 and 4000 rpm	339 lb.-ft. between 1450–5000 rpm	273 lb.-ft. between 1600 and 4500 rpm
Performance				
Top track speed	164 mph	159 mph	156 mph	142 mph
0–60 mph	4.6 secs	5.0 secs	5.2 secs	6.3 secs
0–60 mph with Sport Chrono Package	4.4 secs	4.8 secs	5.0 secs	6.1 secs
Fuel consumption/emissions¹				
Fuel grade	Premium	Premium	Premium	Premium
City	17	17	17	20
Highway	23	23	23	25
Combined	19	19	19	22

Chassis	Macan Turbo	Macan GTS	Macan S	Macan
Front axle	Aluminum double-wishbone front suspension, fully independent	Aluminum double-wishbone front suspension, fully independent	Aluminum double-wishbone front suspension, fully independent	Aluminum double-wishbone front suspension, fully independent
Rear axle	Self-tracking trapezoidal link suspension	Self-tracking trapezoidal link suspension	Self-tracking trapezoidal link suspension	Multi-link suspension, fully independent
Steering	Power-assisted, electromechanical	Power-assisted, electromechanical	Power-assisted, electromechanical	Power-assisted, electromechanical
Brakes	6-piston aluminum monobloc fixed brake calipers at front; single-piston floating brake calipers at rear, discs internally vented	6-piston aluminum monobloc fixed brake calipers at front; single-piston floating brake calipers at rear, discs internally vented	6-piston aluminum monobloc fixed brake calipers at front; single-piston floating brake calipers at rear, discs internally vented	4-piston aluminum monobloc fixed brake calipers at front; single-piston floating brake calipers at rear, discs internally vented
Vehicle Stability system	Enhanced Porsche Stability Management with ABS, ASR, ABD, MSR pre-filling brake system and brake assist	Enhanced Porsche Stability Management with ABS, ASR, ABD, MSR pre-filling brake system and brake assist	Enhanced Porsche Stability Management with ABS, ASR, ABD, MSR pre-filling brake system and brake assist	Enhanced Porsche Stability Management with ABS, ASR, ABD, MSR pre-filling brake system and brake assist
Standard wheels				
Wheels	19-inch Macan Turbo	20-inch RS Spyder Design Wheels	19-inch Macan Design	18-inch Macan Wheels
Standard tires (Front/Rear)	8 x 19 235/55R19 9 x 19 255/50R19	9 x 20 265/45 R 20 10 x 20 295/45 R 20	8 x 19 235/55R19 9 x 19 255/50R19	9 x 18 255/55 R 18 8 x 18 235/60 R 18

¹ Data determined in accordance with the measurement method required by law. The figures do not refer to an individual vehicle nor do they constitute part of the offer. They are intended solely as a means of comparing different types of vehicle. Fuel consumption calculated for vehicles with standard specification only. Actual consumption and performance may vary with items of optional equipment. A vehicle's fuel consumption and CO₂ emissions depend not only on its efficient use of fuel but also on driving style and other non-technical factors. The latest Porsche models with gasoline engine are designed to operate on fuels with an ethanol content of up to 10 percent. EPA estimates not yet available at the time of printing. You can obtain further information about individual vehicles from your authorized Porsche dealer.

Technical data.

Transmission	Macan Turbo	Macan GTS	Macan S	Macan
Layout	Porsche Traction Management (PTM): active all-wheel drive with electronic and map-controlled multi-plate clutch with automatic brake differential (ABD) and anti-slip regulation (ASR)	Porsche Traction Management (PTM): active all-wheel drive with electronic and map-controlled multi-plate clutch with automatic brake differential (ABD) and anti-slip regulation (ASR)	Porsche Traction Management (PTM): active all-wheel drive with electronic and map-controlled multi-plate clutch with automatic brake differential (ABD) and anti-slip regulation (ASR)	Porsche Traction Management (PTM): active all-wheel drive with electronic and map-controlled multi-plate clutch with automatic brake differential (ABD) and anti-slip regulation (ASR)
Porsche Doppelkupplung	Standard	Standard	Standard	Standard
Dimensions				
Length	185.0 in.	184.3 in.	184.3 in.	184.3 in.
Width (including exterior mirrors)	76.1 in.	76.1 in.	76.1 in.	76.1 in.
Height	63.9 in.	63.35 in.	63.9 in.	63.9 in.
Wheelbase	110.5 in.	110.5 in.	110.5 in.	110.5 in.
Fuel capacity	19.8 gal.	19.8 gal.	19.8 in.	19.8 gal.
Weight				
Curb Weight	4244 lbs.	4178 lbs.	4112 lbs.	3902 lbs.
Gross Weight	5622 lbs.	5622 lbs.	5622 lbs.	5390 lbs.
Towing load	4409 lbs.	4409 lbs.	4409 lbs.	4409 lbs.



Which side of your brain still needs convincing?

Introducing Justify It.

You've been dreaming about it for years. You've done your research. You've taken test drives. You've even picked up this brochure. Now you just need that extra nudge to help inform and inspire your decision. We understand that buying a Porsche is as much a rational decision as it is an emotional one. So don't just take our word for it. Visit porschejustifyit.com and discover a world of owner input, reviews, specs, facts, inspiration, and other content—all designed to arm you with as much justification as you need.

PORSCHE



Index

A	C	F	LED headlights	66	P	Porsche Rear Seat Entertainment Plus	84	Seat ventilation	74	T			
Adaptive cruise control including	Chassis	46	Factory collection	141	Panoramic roof system	88	Porsche Side Impact		Seats		Technical data	144–146	
Porsche Active Safe (PAS)	Coasting mode	38	Fuel and Fuel consumption	60	ParkAssist	94	Protection (POSIP) system	58	Adaptive Sport Seats		Telephone module	80	
Aerodynamics, active	Colors	112	Fuel system	62	Personalization	103	Porsche Stability Management (PSM)	56	with comfort memory package	74	Tequipment	138–139	
Air conditioning	Exterior	112–113	G	M	Porsche Active Safe (PAS)	92	Porsche Torque Vectoring Plus		Child seat preparation	76	Thermal management	40	
Air-intake flaps	Interior	114–118	Gearshift paddles	12, 44	Porsche Active Suspension		(PTV Plus)	16, 50	Child seats	76	Thermally/noise insulated glass	88	
Air suspension	Combinations	119	Google® Earth	80	Management (PASM)	46	Porsche Traction Management (PTM)	44	Comfort seats	74	Tires	52–53	
Airbags	Comfort	70	Google® Play Store	82	Porsche Car Configurator	140	Porsche Vehicle Tracking System		Rear seats	76	Transmission	44	
All-wheel drive, active	Comfort lighting package	90	Google® Street View	80	Porsche Car Connect	82	(PVTs)	82	Sport seats	74	Turbo exterior package	18	
Anti-theft protection	Connect module	80	GTS interior package	10	Porsche Ceramic Composite Brake		Power steering	48	Side blades	118	Turbo interior package	18	
Apple CarPlay™	D	I	N	LED headlights	66	(PCCB)	56	Power Steering Plus	48	Smartphone	80, 82	Turbo packages	18
Apple® iTunes	Daytime running lights	66	Interior architecture	70	Porsche Communication Management		Privacy glass	88	Sound Package Plus	84	Turbocharger	42	
Apple Watch®	Direct fuel injection	40	iPhone®	80	(PCM) system including navigation				Sound systems	84	Tire Pressure Monitoring System		
Auto Start Stop function	Drive	38	iPod®	78	module	78	R		Sport button	42	(TPMS)	52	
B	E	L	O	Off-road button	48	Porsche Connect app	82	Rain sensor	90	Sport Chrono Package	50	V	
Bi-Xenon™ headlights	Efficiency	60	Oil supply	40	Porsche Doppelkupplung (PDK)	44	Recycling	62	SportDesign package	6	VarioCam	38	
Bose® Surround Sound System	Electrical system recuperation	42	Onboard computer	72	Porsche Dynamic Light System		Reversing camera	94	Sport exhaust system	42	VarioCam Plus	38	
Brakes	Engineered body design	58	Online navigation	80	(PDLs)	66, 68	Roll-up sunblind	90	Sport suspension	46			
Burmester® High-End Surround	Engines	144			Porsche Dynamic Light System Plus		Roof rails	98	Sport tailpipes	42			
Sound System	Environment	60			(PDLs Plus)	66	Roof transport system	98	Staggered tires	52			
	Exhaust emissions	60			Porsche Entry & Drive	90			Steering	48	W		
	Exhaust turbocharging	42			Porsche Exclusive Manufaktur	104	S		Surround View	94	Weight savings	46	
					Porsche Hill Control (PHC)	48	Safety	56	Suspension tuning	46	Wheels	52–53	
							Seat heating	74			Wireless Internet access	80	