

2011 Forester



Love. It's what makes a Subaru, a Subaru.



The 2011 **Subaru Forester.**

**A new day. A new car. A new destination.
Another chance to make a memory.**

This is what it's all about. Getting out there. Spending quality time. Making each moment count. You never gave up on it, but these days it seems more important than ever. Good thing the Subaru Forester is built to get out and do more. You get the dependable traction and handling of Subaru Symmetrical All-Wheel Drive with the refined power and optimal fuel efficiency of the legendary SUBARU BOXER® engine. Plus, advanced safety features to help keep you and your family protected. And with a spacious interior that is almost as big as it is versatile, you're ready for each day's new adventure and tomorrow's new opportunity.





Forester 2.5XT Premium in Obsidian Black Pearl with accessory front bumper underguard.



"Highest Model Loyalty in its segment."¹

*"Best car for small families of 2010."
—Cars.com*

*Highest Predicted Resale Value – Compact Utility Vehicle
—ALG's 2010 Residual Value Award for CUVs*

¹ According to Polk statistics for the Compact SUV Category in the 2009 model year, Subaru Forester ranked highest by having the greatest percentage of households return to purchase or lease another Subaru Forester.

Forester 2.5X Limited in Spark Silver Metallic.



Versatility can be rewarding.
Good thing there's room for more of it.

In charge and at ease.



Settle into the driver's seat, and you'll find yourself in a spacious cabin, surrounded by amenities designed for you and your passengers' convenience and comfort. Those in the rear are sure to appreciate the reclining rear seats¹, and everyone will enjoy the sunshine and fresh air flowing in from the optional oversized panoramic moonroof. Add in available dual-zone climate control, and your only problem may be getting your passengers to leave.

¹ Reclining rear seats not available on base 2.5X.



A garden is only as good as its tools.

The only manufacturer with 2010
IIHS Top Safety Picks for all models.¹

—Insurance Institute for Highway Safety (IIHS)

All-out safety.

Thought-out convenience.



Exceptional Control

Safety begins with avoidance. The traction and balance of Subaru Symmetrical All-Wheel Drive and the stability of the SUBARU BOXER® engine provide you with the outstanding control you need to react to hazards. Every Forester also comes standard with VDC electronic stability control, which can detect a loss of control and intervene to help keep you on your intended path.



Protected from the Outside

During an impact, nothing is more crucial for the safety of all occupants than maintaining cabin integrity. Our frame design, the Ring-shaped Reinforcement Frame, is designed to be exceptionally strong for maximum resistance to impact energy. What's more, its unique configuration helps divert that energy away from occupants.



Protected on the Inside

Front, front seat side-impact and side-curtain airbags²—standard on every Forester—surround outboard occupants in the event of a crash to further help prevent injury. To maximize their effectiveness, the advanced system found on the Forester uses an array of sensors, including a rollover sensor, to ensure the airbags are deployed in the best way possible.



Multifunction Center Console

It's a place for a purse, a couple of extra cups, an iPod®, a cell phone, or whatever. This adaptable center console is ready to find a way to fit whatever you need to bring along.



Advanced Audio System

Plug in your iPod® and navigate your entire music collection with the stereo controls or experience a new level of sound quality with available HD Radio. Available SIRIUS® Satellite Radio offers unlimited entertainment, while Bluetooth® hands-free connectivity helps you stay connected no matter where the road takes you.

60/40 Folding Rear Seatback

The Forester is designed to fit intelligently into your life. So, we've worked to maximize its usefulness wherever possible. Even the design of the rear suspension helps open the large cargo area, so you can make the most of up to 68.3 cubic feet of space. To further enable you to handle your daily tasks, the 60/40 folding rear seatback easily and conveniently expands the cargo area to fit large objects—even while carrying passengers.





Sometimes the most ordinary road
leads to the greatest destination.

Make your Subaru truly yours.



Heavy-duty Cargo Basket

Mount to standard roof rails and are compatible with most genuine Subaru roof carriers for bikes, kayaks, skis and cargo carriers. A Roof Carrier Base Kit is available for models without roof rails.

Aero cross bars shown with heavy-duty cargo basket.



Cargo Tray

Tough, durable tray helps protect cargo area. Can be easily removed and rinsed clean.

Available in Black and Platinum colors.



Sport Grille

Bold metal mesh design adds an aggressive look to Forester. Comes pre-painted and ready to install.



Rear Bumper Cover

Helps protect upper surface of painted rear bumper from scratches and dings during loading and unloading.



All-weather Floor Mats

Custom-fitted, heavy-gauge protective mats. Help protect vehicle carpet from sand, dirt and moisture.

Not intended for use over top of carpeted floor mats.



Moonroof Air Deflector

Helps reduce wind noise and sun glare when moonroof is open.



Body-side Moldings

Color-matched moldings help protect vehicle doors from parking lot dings, while attractively blending with the lines of the car.



Reverse Assist Sensors

Helps provide added confidence when backing up or parallel parking. While in reverse, audible warnings alert the driver as the vehicle approaches large objects in its path.



Remote Engine Starter

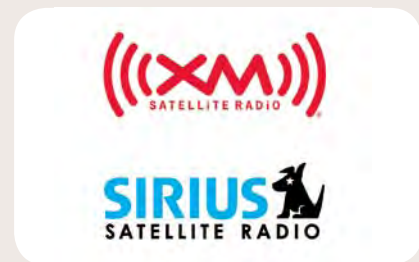
Allows vehicle to start by pushing a button from the convenience of home or the office (up to 400 feet away depending on obstructions) so that the vehicle's interior temperature is more comfortable upon entry.



Trailer Hitch

Heavy-duty rated at 200 lbs. tongue weight and 2,400 lbs. towing capacity.

Ball not included. Trailer brakes may be needed.



Satellite Radio

Over 130 digital channels of commercial-free music, sports, news, talk, lifestyle and more. Your choice of XM® or SIRIUS®.

Monthly subscriptions sold separately. Additional fees, equipment and taxes may apply. Not available in Hawaii and Alaska.



Puddle Lights

L.E.D. lights illuminate when vehicle doors are unlocked using the keyless entry. A soft glow shines on the ground, aiding entry and exit of the vehicle.

ENGINE AND DRIVETRAIN

	2.5X	2.5XT
Engine	2.5-liter DOHC aluminum-alloy 16-valve horizontally opposed SUBARU BOXER® engine with Active Valve Control System.	2.5-liter DOHC intercooled, turbocharged aluminum-alloy 16-valve 4-cylinder horizontally opposed SUBARU BOXER engine with Active Valve Control System.
Power Torque	170 hp @ 5,800 rpm 174 lb-ft @ 4,100 rpm	224 hp @ 5,200 rpm 226 lb-ft @ 2,800 rpm
Manual transmission	Fully synchronized 5-speed manual with Incline Start Assist. 2.5X and 2.5X Premium: Standard. 2.5X Limited, 2.5X Touring, 2.5XT Premium and 2.5XT Touring: Not available.	
Automatic transmission	4-speed electronic direct-control automatic with manual shift mode. 2.5X and 2.5X Premium: Optional. 2.5X Limited, 2.5X Touring, 2.5XT Premium and 2.5XT Touring: Standard.	
CA Emissions	SULEV (PZEV) ¹ and LEV2	
Towing capacity	2,400 lbs	

TRACTION AND STABILITY

Symmetrical All-Wheel Drive	Standard	Standard
Vehicle Dynamics Control (VDC)	Standard VDC electronic stability control utilizes sensors which constantly monitor wheel speeds, steering angle, brake pressure, vehicle yaw rate and lateral g-forces. If VDC detects a difference between the driver's intended path and the one the vehicle is actually taking, VDC applies braking power and/or reduces engine torque to help correct vehicle path.	
Traction Control System (TCS)	VDC also incorporates an all-wheel, all-speed traction control system which senses a loss of traction and applies braking force to the slipping wheel or wheels as necessary to maintain vehicle motion.	

FUEL

Fuel economy (city/highway) ²	Manual: 21/27 mpg Automatic: 21/27 mpg	19/24 mpg
Fuel requirement	Unleaded gasoline (87 octane)	Premium unleaded gasoline (91 octane)

CHASSIS

Steering	Engine-speed-sensing variable power-assisted rack-and-pinion. Turning circle: 34.4 feet.
Suspension	4-wheel independent suspension. Front: Strut-type with lower L-arm. Stabilizer bar. Rear: Double wishbone. Stabilizer bar.
Brakes	4-wheel disc, ventilated front. 4-channel, 4-sensor ABS with Electronic Brake-force Distribution (EBD).
Brake Assist	When emergency braking is detected by how quickly the brake pedal is pressed, maximum brake pressure is immediately applied.

WHEELS AND TIRES

Wheels	2.5X: 16 x 6.5-inch steel with wheel covers Alloy Wheel Value Package: 16 x 6.5-inch 5-spoke aluminum alloy 2.5X Premium, 2.5X Limited and 2.5X Touring: 17 x 7.0-inch 5-split-spoke aluminum alloy	2.5XT Premium and 2.5XT Touring: 17 x 7.0-inch 5-spoke aluminum alloy
Tires	2.5X: 215/65 R16 96H all-season Alloy Wheel Value Package: 215/65 R16 96H all-season 2.5X Premium, 2.5X Limited and 2.5X Touring: 225/55 R17 95H all-season	2.5XT Premium and 2.5XT Touring: 225/55 R17 95H all-season

EXTERIOR AND INTERIOR DIMENSIONS

Length/Width/Height	179.5 inches/70.1 inches/66.9 inches with roof rails (65.9 inches without roof rails)	179.5 inches/70.1 inches/66.9 inches with roof rails
Wheelbase	103.0 inches	103.0 inches
Track (front/rear)	60.2 inches/60.2 inches	60.2 inches/60.2 inches
Base curb weight (manual/automatic)	2.5X: 3,252 lbs/3,296 lbs 2.5X Premium: 3,296 lbs/3,340 lbs 2.5X Limited: N/A/3,362 lbs 2.5X Touring: N/A/3,362 lbs	2.5XT Premium: N/A/3,450 lbs 2.5XT Touring: N/A/3,461 lbs
Headroom (front/rear)	41.6 inches/40.4 inches (with moonroof: 40.0 inches/37.7 inches)	40.0 inches/37.7 inches
Legroom (front/rear)	43.1 inches/38.0 inches	43.1 inches/38.0 inches
Shoulder room (front/rear)	56.1 inches/55.6 inches	56.1 inches/55.6 inches
Passenger volume	107.6 cubic feet (with moonroof: 102.1 cubic feet)	102.1 cubic feet
Cargo volume	33.5 cubic feet (with moonroof: 30.8 cubic feet)	30.8 cubic feet
Maximum cargo volume	68.3 cubic feet with rear seat lowered (with moonroof: 63.0 cubic feet)	63.0 cubic feet with rear seat lowered

Protecting Your Investment

Once you're part of our family, we'll be there for you. Every Subaru comes with 24-hour roadside assistance for 3 years or 36,000 miles. If you have trouble on the road, a tow to the nearest Subaru dealership and other services are just a phone call away. And to protect you over the long haul, we offer Subaru Added Security®—extended service agreements and maintenance plans that will help protect your car for up to 7 years or 100,000 miles. They're the only mechanical and maintenance plans backed by Subaru of America, Inc., and because we've been backing them for more than 25 years, they're agreements you can trust. Your dealer has full coverage details.

Warranties

New Car Limited Warranty	3 years or 36,000 miles, whichever comes first.
Powertrain Limited Warranty	5 years or 60,000 miles, whichever comes first.
Wear Item Limited Warranty	3 years or 36,000 miles, whichever comes first. Repairs to the following items will also be covered under Wear Item Limited Warranty: • Brake Pads • Wiper Blades • Clutch Linings • Transmitter Batteries
Rust Perforation Limited Warranty	5 years, unlimited mileage.

EXTERIOR	2.5X	2.5X Premium	2.5X Limited	2.5X Touring	2.5XT Premium	2.5XT Touring
High-intensity discharge (HID) low-beam and multireflector halogen high-beam headlights	-	-	-	●	-	●
Fog lights	-	-	●	●	-	●
Functional hood scoop (feeds turbocharger intercooler)	-	-	-	-	●	●
Rear spoiler	-	-	-	-	●	●
Black side mirrors	●	-	-	-	-	-
Body-color side mirrors	-	●	●	-	●	●
Body-color side mirrors with integrated turn signals	-	-	-	●	-	●
Windshield wiper de-icer and heated side mirrors (All-Weather Package)	-	○	●	●	-	●
Raised roof rails: black finish	○	●	●	-	●	-
Raised roof rails: silver finish	-	-	-	●	-	●
Panoramic moonroof	-	●	●	●	●	●

SEATING AND TRIM	2.5X	2.5X Premium	2.5X Limited	2.5X Touring	2.5XT Premium	2.5XT Touring
6-way manually adjustable driver's seat. 4-way manually adjustable front-passenger's seat.	●	-	-	-	-	-
10-way power adjustable driver's seat with power adjustable lumbar support. 4-way manually adjustable front-passenger's seat.	-	●	●	●	●	●
Heated front seats (All-Weather Package)	-	○	●	●	-	●
Reclining rear seats	-	●	●	●	●	●
60/40-split flat-folding rear seatbacks	●	●	●	●	●	●
One-touch folding rear seatbacks	-	-	-	●	-	●
Leather-wrapped steering wheel and shifter handle	-	-	●	●	-	●
Cloth upholstery	●	●	-	-	●	-
Leather-trimmed upholstery	-	-	●	●	-	●
Aluminum-alloy pedal covers	-	-	-	-	●	●

CONVENIENCE FEATURES	2.5X	2.5X Premium	2.5X Limited	2.5X Touring	2.5XT Premium	2.5XT Touring
Driver's auto up/down power window	-	●	●	●	●	●
3-spoke steering wheel with cruise control buttons	●	-	-	-	-	-
3-spoke steering wheel with audio system, cruise control and Bluetooth® buttons ³	-	●	●	●	●	●
Manually adjustable tilt steering column	●	-	-	-	-	-
Manually adjustable tilt/telescoping steering column	-	●	●	●	●	●
8 cup holders	●	●	●	●	●	●
Overhead console with dual maplights and sunglasses storage	●	●	●	●	●	●
Multifunction center console with detachable pocket and partition, sliding armrest, dual cup holders and 12-volt power outlets	●	●	●	●	●	●
Retractable rear tray with dual cup holders	-	●	●	●	●	●
Cargo-area with 2 grocery bag hooks, 4 tiedown hooks and 2 upper utility hooks	●	●	●	●	●	●
Cargo-area underfloor storage	●	●	●	●	●	●
Removable cargo-area tray	-	-	●	●	-	-

INSTRUMENTATION	2.5X	2.5X Premium	2.5X Limited	2.5X Touring	2.5XT Premium	2.5XT Touring
Analog speedometer, tachometer and fuel gauges	●	●	●	-	●	●
Analog speedometer, tachometer, "eco" fuel economy and temperature gauges with electroluminescent lighting	-	-	-	●	-	●
Multi-function display with average fuel economy, clock and ambient temperature	●	●	●	●	●	●

AUDIO SYSTEMS	2.5X	2.5X Premium	2.5X Limited	2.5X Touring	2.5XT Premium	2.5XT Touring
4-speaker audio system with single-disc in-dash CD player with MP3/WMA playback capability	●	-	-	-	-	-
4-speaker audio system with single-disc in-dash CD player with MP3/WMA playback capability, iPod® control, USB port, Bluetooth hands-free phone and audio streaming connectivity	-	●	-	-	●	-
6-speaker (2.5X Limited) or 7-speaker (2.5X Touring and 2.5XT Touring) audio system with single-disc in-dash CD player with MP3/WMA playback capability, iPod® control, USB port, Bluetooth hands-free phone and audio streaming connectivity, and backup camera ⁴	-	-	●	●	-	●
XM® or SIRIUS® Satellite Radio capability ⁵	●	-	-	-	-	-
SIRIUS® Satellite Radio capability ⁵	-	●	●	-	●	-
SIRIUS® Satellite Radio ⁶	-	-	-	●	-	●
Auxiliary audio jack for portable media players	●	●	●	●	●	●

CLIMATE CONTROL	2.5X	2.5X Premium	2.5X Limited	2.5X Touring	2.5XT Premium	2.5XT Touring
Manually adjustable CFC-free air conditioning system with air filtration	●	●	-	-	●	-
Automatic climate control system with air filtration	-	-	●	-	-	-
Dual-zone automatic climate control system with air filtration	-	-	-	●	-	●

SECURITY	2.5X	2.5X Premium	2.5X Limited	2.5X Touring	2.5XT Premium	2.5XT Touring
Keyless entry system with answer-back electronic chirp	●	●	●	●	●	●
Antitheft security system	●	●	●	●	●	●
Engine immobilizer	●	●	●	●	●	●

SAFETY	2.5X	2.5X Premium	2.5X Limited	2.5X Touring	2.5XT Premium	2.5XT Touring
ACTIVE						
Subaru Symmetrical All-Wheel Drive (AWD)	●	●	●	●	●	●
Vehicle Dynamics Control (VDC)	●	●	●	●	●	●
SUBARU BOXER engine	●	●	●	●	●	●
4-wheel antilock braking system (ABS) with Electronic Brake-force Distribution (EBD)	●	●	●	●	●	●
Brake Assist	●	●	●	●	●	●
Daytime Running Lights (DRL)	●	●	●	●	●	●
PASSIVE						
Driver's and front-passenger's front airbags (SRS) ⁷	●	●	●	●	●	●
Subaru advanced frontal airbag system ⁷	●	●	●	●	●	●
Seat-mounted front side-impact airbags (SRS) ⁷	●	●	●	●	●	●
Side-curtain airbags protecting front and rear outboard occupants (SRS) ⁷	●	●	●	●	●	●
Rollover sensor (SRS) ⁷	●	●	●	●	●	●
Height-adjustable active front-seat head restraints	●	●	●	●	●	●
Height-adjustable 3-point front seatbelts with pretensioners and force limiters. 3-point seatbelts at all rear seating positions.	●	●	●	●	●	●
Rear child-safety door locks	●	●	●	●	●	●
LATCH system: Lower Anchors and Tethers for Children	●	●	●	●	●	●
Backup camera ⁴	-	○	○	●	-	●

OPTIONAL EQUIPMENT	2.5X	2.5X Premium	2.5X Limited	2.5X Touring	2.5XT Premium	2.5XT Touring
4-speed adaptive electronic direct-control automatic transmission with manual shift mode	○	○	●	●	●	●
TomTom® Navigation System: Integrated 4-speaker audio system with single-disc in-dash CD/DVD ⁸ player with MP3 playback capability and detachable TomTom® touch-screen navigation system with 4.3-inch high-resolution screen, iPod® control, Bluetooth® hands-free phone connectivity, TomTom® Traffic ⁹ and backup camera ⁴	-	○ ¹⁰	-	-	-	-
Navigation System: 7-inch high-resolution touch-screen GPS navigation system and 6-speaker (2.5X Limited) or 7-speaker (2.5X Touring and 2.5XT Touring) audio system with single-disc in-dash CD player, MP3/WMA capability, RCA auxiliary input jack for portable multimedia devices, Bluetooth® hands-free phone capability and backup camera ⁴	-	-	○	○	-	○
All-Weather Package: Windshield wiper de-icer, heated side mirrors and heated front seats	-	○	●	●	-	●
Alloy Wheel Value Package: Raised roof rails, 16 x 6.5-inch aluminum-alloy wheels	○	-	-	-	-	-

● Standard ○ Optional - Not available

¹ 2011 Subaru Forester non-turbo 2.5-liter models achieving a Partial Zero Emission Vehicle (PZEV) rating by the California Air Resources Board are available in all 50 states. Only those distributed in California, Connecticut, Maine, Massachusetts, New Jersey, New York, Rhode Island and Vermont are eligible for the 15 years/150,000 mile emission warranty, California PZEV-certified vehicles are considered the cleanest gasoline-powered vehicles because they meet California's most stringent tailpipe emissions standards for Super Ultra Low Emission Vehicles (SULEV). (Subaru offers other 2011 model emissions warranties for high-cost parts in only those states adopting the CA LEV Program.) ² 2011 EPA fuel economy estimates. Actual mileage may vary. ³ Separate steering-wheel-mounted Bluetooth hands-free phone buttons not available with optional navigation systems. Bluetooth functions on navigation-system-equipped models controlled through steering-wheel audio system buttons and navigation system touch-screen display. ⁴ Backup camera available as an accessory on 2.5X Premium equipped with optional TomTom® Navigation System and 2.5X Limited. ⁵ Available as an accessory. Satellite radio hardware and required monthly subscription sold separately. Satellite radio not available with optional TomTom® Navigation System. See your dealer. ⁶ Satellite radio hardware standard. Required monthly subscription sold separately. See your dealer. ⁷ The Supplemental Restraint System (SRS) affords the driver and the front passenger additional protection in moderate to severe frontal and side-impact collisions and outboard 2nd-row passengers additional protection in moderate to severe side-impact collisions. This system provides supplemental protection only, and seatbelts must be worn in order to avoid injuries to out-of-position occupants upon airbag deployment and to provide the best combined protection in a serious accident. Children should always be properly restrained in one of the rear seats. See Owner's Manual for recommended seating position. ⁸ DVD player only with vehicle stopped and parking brake engaged. ⁹ Subscription fee and cell-phone data plan usage required. Not all cell phones compatible and service not available in all areas. See your dealer. ¹⁰ Requires All-Weather Package.

Some images shown are for illustration purposes only. Specifications in this brochure are based on the latest product information available at the time of publication. For the most up-to-date and detailed product information, log on to subaru.com. Some equipment shown in photography in this brochure is optional at extra cost. Specific options may be available only in combination with other options. Specific combinations of equipment or features may vary from time to time and by geographic area. Certain accessories and equipment may not be available at the time of publication. Subaru of America, Inc., reserves the right to change or discontinue at any time, without notice, prices, colors, materials, equipment, accessories, specifications, models and packages without incurring any obligation to make the same or similar changes on vehicles previously sold. Colors shown may vary due to reproduction and printing processes.

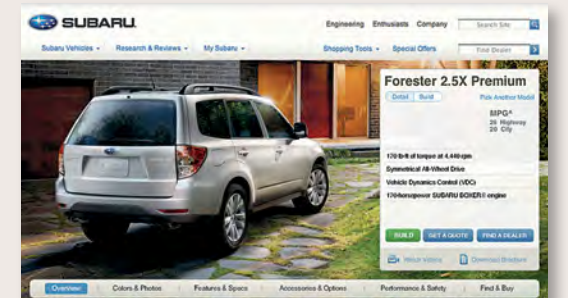
This brochure was prepared by Subaru of America Inc. A warranty from Subaru of America, Inc., is available only on cars sold to the first retail purchaser through an authorized Subaru dealer in the continental U.S. or Alaska. Subaru, SUBARU BOXER, Added Security and Forester are registered trademarks. Bluetooth is a registered trademark of Bluetooth SIG, Inc. HomeLink is a registered trademark of Prince Corporation, a wholly owned subsidiary of Johnson Controls. SIRIUS and XM Radio are registered trademarks of SIRIUS XM Radio Inc. iPod is a registered trademark of Apple Inc. TomTom is a registered trademark of TomTom International B.V. Corporation. For more information, contact your Subaru dealer or log on to subaru.com.

Log on and take off.

What makes a Forester, a Forester.

Making the final decision to purchase a vehicle can be complex. That's why you'll find everything you'll need to know about being a Forester owner at subaru.com. Not only will you find images of the Forester and detailed information about it, but you'll also be able to check out special offers, ratings, reviews, and news about Subaru. We've also provided a wealth of interactive tools to help you decide if a Subaru is right for you.

subaru.com/vehicles/forester



Subaru Gear
Our Partners
Drive Magazine

subaru.com/gear
subaru.com/partners
subaru.com/drive

2.5X



- 170-hp 2.5-liter 4-cylinder SUBARU BOXER® engine
- Subaru Symmetrical All-Wheel Drive
- 5-speed manual transmission or optional 4-speed automatic transmission
- 16-inch steel wheels with covers
- Cloth upholstery
- 6-way manually adjustable driver's seat. 4-way manually adjustable front-passenger's seat.
- 4-speaker audio system with CD player with MP3/WMA playback capability, and SIRIUS®/XM® Satellite Radio capability¹
- Optional Alloy Wheel Value Package

2.5X Limited



- 170-hp 2.5-liter 4-cylinder SUBARU BOXER engine
- Subaru Symmetrical All-Wheel Drive
- 4-speed automatic transmission
- 17-inch aluminum-alloy wheels
- Raised roof rails: black
- 10-way power adjustable driver's seat. 4-way manually adjustable front-passenger's seat.
- Reclining rear seatbacks
- Retractable rear tray with dual cup holders
- ▲ Fog lights
- ▲ Leather-trimmed upholstery
- ▲ 6-speaker audio system with HD Radio, CD player with MP3/WMA playback capability, Bluetooth®, iPod® control and SIRIUS® Satellite Radio capability¹
- ▲ Automatic climate control system
- ▲ All-Weather Package

2.5XT Premium



- 224-hp turbocharged 2.5-liter 4-cylinder SUBARU BOXER engine
- Subaru Symmetrical All-Wheel Drive
- 4-speed automatic transmission
- 17-inch aluminum-alloy wheels
- Fog lights
- Cloth upholstery
- 10-way power adjustable driver's seat. 4-way manually adjustable front-passenger's seat.
- 4-speaker audio system with CD player with MP3/WMA playback capability, Bluetooth®, iPod® control and SIRIUS®/XM® Satellite Radio capability¹
- Aluminum-alloy pedal covers

¹ Available as an accessory. Satellite radio hardware and required monthly subscription sold separately. See your dealer.
² Required monthly subscription sold separately. See your dealer.

▲ Additions or differences from preceding trim level.

2.5X Premium



- 170-hp 2.5-liter 4-cylinder SUBARU BOXER engine
- Subaru Symmetrical All-Wheel Drive
- 5-speed manual transmission or optional 4-speed automatic transmission
- Cloth upholstery
- ▲ Panoramic moonroof
- ▲ 17-inch aluminum-alloy wheels
- ▲ Raised roof rails: black
- ▲ 10-way power adjustable driver's seat. 4-way manually adjustable front-passenger's seat.
- ▲ Reclining rear seatbacks
- ▲ 4-speaker audio system with CD player with MP3/WMA playback capability, Bluetooth®, iPod® control and SIRIUS® Satellite Radio capability¹
- ▲ Retractable rear tray with dual cup holders

2.5X Touring

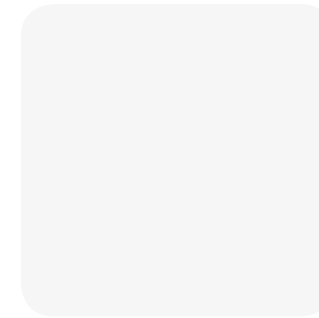


- 170-hp 2.5-liter 4-cylinder SUBARU BOXER engine
- Subaru Symmetrical All-Wheel Drive
- 4-speed automatic transmission
- 17-inch aluminum-alloy wheels
- Leather-trimmed upholstery
- 10-way power adjustable driver's seat. 4-way manually adjustable front-passenger's seat.
- 6-speaker audio system with HD Radio, CD player with MP3/WMA playback capability, Bluetooth®, iPod® control and SIRIUS® Satellite Radio²
- ▲ HID low-beam headlights
- ▲ Side mirrors with integrated turn signals
- ▲ Raised roof rails: silver finish
- ▲ Electroluminescent gauges
- ▲ Dual-zone automatic climate control system
- ▲ One-touch folding rear seatbacks

2.5XT Touring



- 224-hp turbocharged 2.5-liter 4-cylinder SUBARU BOXER engine
- Subaru Symmetrical All-Wheel Drive
- 4-speed automatic transmission
- 17-inch aluminum-alloy wheels
- 10-way power adjustable driver's seat. 4-way manually adjustable front-passenger's seat.
- ▲ HID low-beam headlights
- ▲ Side mirrors with integrated turn signals
- ▲ Raised roof rails: silver finish
- ▲ Leather-trimmed upholstery
- ▲ 7-speaker audio system with HD Radio, CD player with MP3/WMA playback capability, Bluetooth®, iPod® control and SIRIUS® Satellite Radio²
- ▲ Dual-zone automatic climate control system
- ▲ Electroluminescent gauges
- ▲ One-touch folding rear seatbacks
- ▲ All-Weather Package



Satin White Pearl



Spark Silver Metallic



Steel Silver Metallic



Sky Blue Metallic



Marine Blue Pearl



Paint



Sage Green Metallic



Paprika Red Pearl



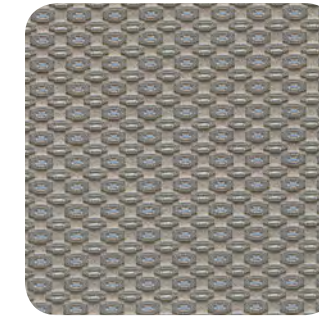
Camellia Red Pearl



Dark Gray Metallic



Obsidian Black Pearl



Platinum Cloth (PC)



Black Cloth (BC)



Platinum Moray Cloth (PMC)

Upholstery



Black Moray Cloth (BMC)



Platinum Leather (PL)



Black Leather (BL)

Color Combinations	2.5X 2.5X Premium	2.5XT Premium	2.5X Limited 2.5X Touring 2.5XT Touring
Satin White Pearl	PC	PMC	PL
Spark Silver Metallic	BC	BMC	BL
Steel Silver Metallic	PC	PMC	PL
Sky Blue Metallic	PC	PMC	PL
Marine Blue Pearl	BC	BMC	BL
Sage Green Metallic	PC	PMC	PL
Paprika Red Pearl	BC	BMC	BL
Camellia Red Pearl	PC	PMC	PL
Dark Gray Metallic	PC	PMC	PL
Obsidian Black Pearl	BC	BMC	BL

It's not disposable. It's family.

Making the world a better place is no easy task. That's why you deserve a car you can trust. At Subaru, we build each of our vehicles with the highest standards of manufacturing, and with designs that are inherently tough and resilient. It's why our vehicles excel in the rigors of daily life. And why 95% of all the vehicles we've built in the last 10 years are still on the road today.¹ We also work diligently to cut waste before the car ever rolls out of the factory. In 2004, Subaru of Indiana Automotive, Inc. (SIA) became the first manufacturing facility in the U.S. to reach zero landfill status—nothing from its manufacturing efforts ever goes into a landfill. Subaru facilities in Japan have achieved similar goals in reusing and recycling. And, because clear skies are just as important as clean landscapes, the Forester has been recognized with Partial Zero Emission Vehicle—PZEV²—status. It achieves such cleanliness and efficiency without the negative environmental impact required to manufacture many vehicles with battery-based drive systems, and without compromising performance and versatility.



Find out more about our efforts to keep it cleaner and greener.
subaru.com/environment



For more information on Heal the Bay, visit healththebay.org.

These brochures were printed with vegetable-based inks and produced using a "Green Printing Process" and FSC standards. The Forest Stewardship Council (FSC) is an international organization that brings people together to find solutions which promote responsible stewardship of the world's forests and environments.

By producing these brochures in a green way rather than by traditional methods, we saved 81 trees preserved for the future; 233 lbs water-borne waste not created; 34,286 gallons wastewater flow saved; 3,793 lbs solid waste not generated; 7,469 lbs net greenhouse gases prevented; 57,171,170 BTUs energy not consumed.

¹ Based on R. L. Polk & Co. registration data in the U.S. 1999 to 2009. ² 2011 Forester, Legacy and Outback 2.5L non-turbo models certified as Partial Zero Emission Vehicle (PZEV) are available in all 50 states. Only those sold and registered in California, Connecticut, Maine, Maryland, Massachusetts, New Jersey, New Mexico, New York, Rhode Island and Vermont will be eligible for the 15 years/150,000 mile emission warranty.

