



2009 | Tribeca



Brings more style.
Brings more stuff.



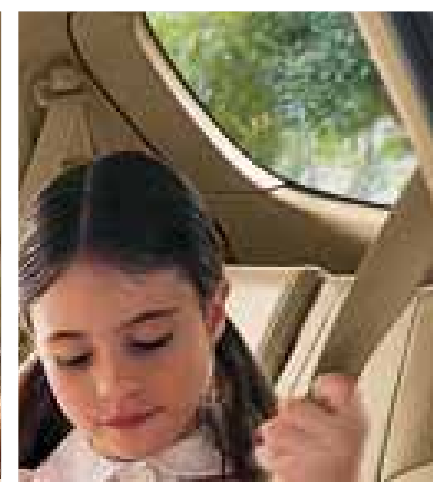
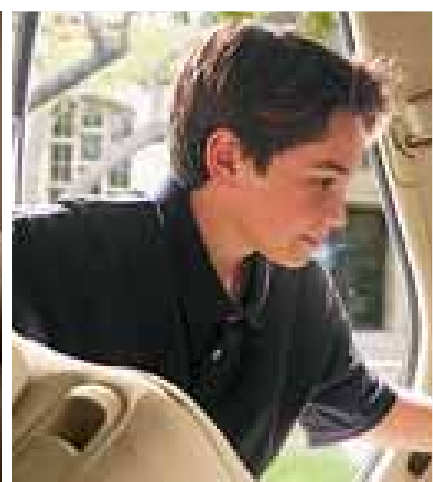


The 2009 Subaru Tribeca.

Because you love the journey.

We took everything you already love about Subaru—innovative engineering, intelligent design, all-wheel-drive control and safety—and expanded on it with style and space to create the biggest and most versatile Subaru ever. With the Tribeca®, you have the option of three rows of seating with endless comfort, 64 configurations to explore and still room for up to seven. Versatile enough to accommodate what the week brings, sophisticated enough for all the weekends in between.

Many SUVs offer a spacious interior. But the Tribeca fills that space with innovations and designs that are simply **smart**. Every square inch of the elegant interior is maximized with distinctive features thoughtfully placed for your convenience and ingenious configurations that mean just about everyone and everything fits.



Room for More People

No need to take two cars—everyone can fit in yours. With the available 3rd row, it offers full 7-passenger seating.

Endless Configurations

There's no such thing as maximum occupancy—you just have to get creative. With all the seating configurations, there are nearly endless possibilities for people and cargo.

More Places for Stuff

You can have it all, bring it all, and keep it all within reach. The Tribeca is full of compartments and storage options to help you cut down on clutter.

Innovative Features

The flexible 2nd row is full of hidden talents. It has a 40/20/40-split, offers easy access to the 3rd row from either side, slides for more legroom, and reclines.

Well-Appointed Interior

The stylish and spacious Tribeca creates an ideal environment for everyone to enjoy and admire. Your passengers benefit from the sophisticated design, relaxing atmosphere and advanced features like the available rear-seat DVD entertainment and premium audio systems. You can also enjoy an available navigation system with easy-to-use touch-screen controls and rear-vision camera, together giving you the comfort of knowing where you're going at all times.



Satellite Radio

Listen to rock, jazz, classical, or any channel in digital quality sound, wherever your journey may take you. Available XM® or SIRIUS® Satellite Radio¹ lets you access over 130 channels of satellite feed. On navigation-equipped models, XM radio is standard.²

¹ Subscription and additional equipment required.
² Activation and monthly subscription sold separately.

Audio Systems

Find your groove with the 6-speaker audio/single-disc CD player. Or be dazzled by the premium 9-speaker system of the Tribeca Limited with its 6-disc in-dash CD changer to keep the music flowing. Both can read MP3-formatted discs. Control it all with the steering wheel-mounted controls that let you keep your hands in their proper driving positions. And keep your playlists handily accessible with the auxiliary audio jack, which will accommodate your iPod or virtually any portable media player.



Fold-Flat Rear Seats

With the 2nd- and 3rd-row seats folded, you can take advantage of the 74.4 cubic feet of cargo capacity.

Versatility

The best way to enjoy all of your space is to share it with your friends and family. With the Tribeca, you can bring more people on your adventures and they can even bring their bags. You have the option of 5-passenger seating and still having 37.6 cubic feet of cargo room or three rows with room for up to seven. The flexible design lets you fold all the seats down, creating 74.4 cubic feet of space so you won't ever have to leave anyone or anything behind.



Flexible 2nd Row

With a seatback split three ways, you can seat three across, or fold down one or two of the seatbacks to carry longer cargo. The 2nd row slides almost eight inches forward and backward, and also reclines for comfort.

Ten Cupholders

There's no need to cry over spilled anything with ten cupholders to choose from. Every seat has one within reach with two in the center console, one in every door, two in the 2nd-row armrest, and two on each side of the 3rd row.

3rd-Row Seating

The available 3rd row allows for 7-passenger capability—or fold down one or both of the seats for access to the 37.6 cubic feet of cargo space. You can also access the 3rd row from both sides of the vehicle.



For Subaru, the only thing more important than the driving experience of our vehicles is that you arrive safely at your destination. This commitment to **protect** drivers with multidimensional safety is what made each and every Subaru model tested an IIHS 2008 Top Safety Pick.¹

home

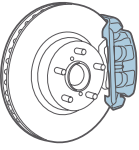


★★★★★
for front and side impact collisions²
— National Highway Traffic Safety Administration

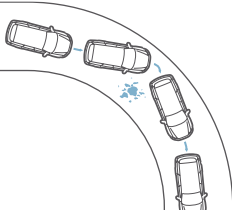
Active Safety | Trust. Subaru knows that this is the most important feeling to have when you get behind the wheel. You can drive with confidence knowing that Subaru engineered the Tribeca to assist in keeping you safe by helping you avoid accidents. Exceptional visibility helps you see danger coming, and active technologies like Subaru AWD and a responsive suspension help you stay in control in an emergency.

Passive Safety | In a worst-case scenario, the Subaru Tribeca is one of your best possible bets. Government crash testing recognizes the Tribeca with a five-star crash-test safety rating.² Its brilliant track record in safeguarding passengers comes from an array of advanced protection technologies coupled to a body structure that is meticulously engineered to help save lives.

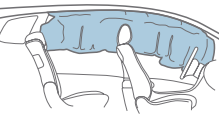
Brake Assist
This safety feature closely monitors the pressure you apply to the brake pedal. If it detects a panic-braking situation, it helps you avoid collisions by applying maximum braking force more quickly.



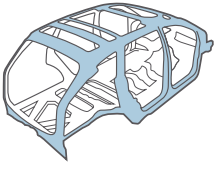
Vehicle Dynamics Control (VDC)
Standard on every 2009 Tribeca, VDC electronic stability control monitors the path of your vehicle to help detect unwanted deviations in your trajectory, and helps correct them to keep you in control and on the right path.



Front, Side and Side-Curtain Airbags³
An array of sensors can deploy any one or more of the six airbags the instant an accident is detected. The Tribeca features side-curtain airbags and a rollover sensor to better provide all-over protection for the driver, front passenger and 2nd-row outboard passengers.



Ring-Shaped Reinforcement Frame
Exceptionally strong, the frame design of the Tribeca not only helps to maintain cabin integrity during a crash—it also helps divert dangerous impact energy away from occupants.



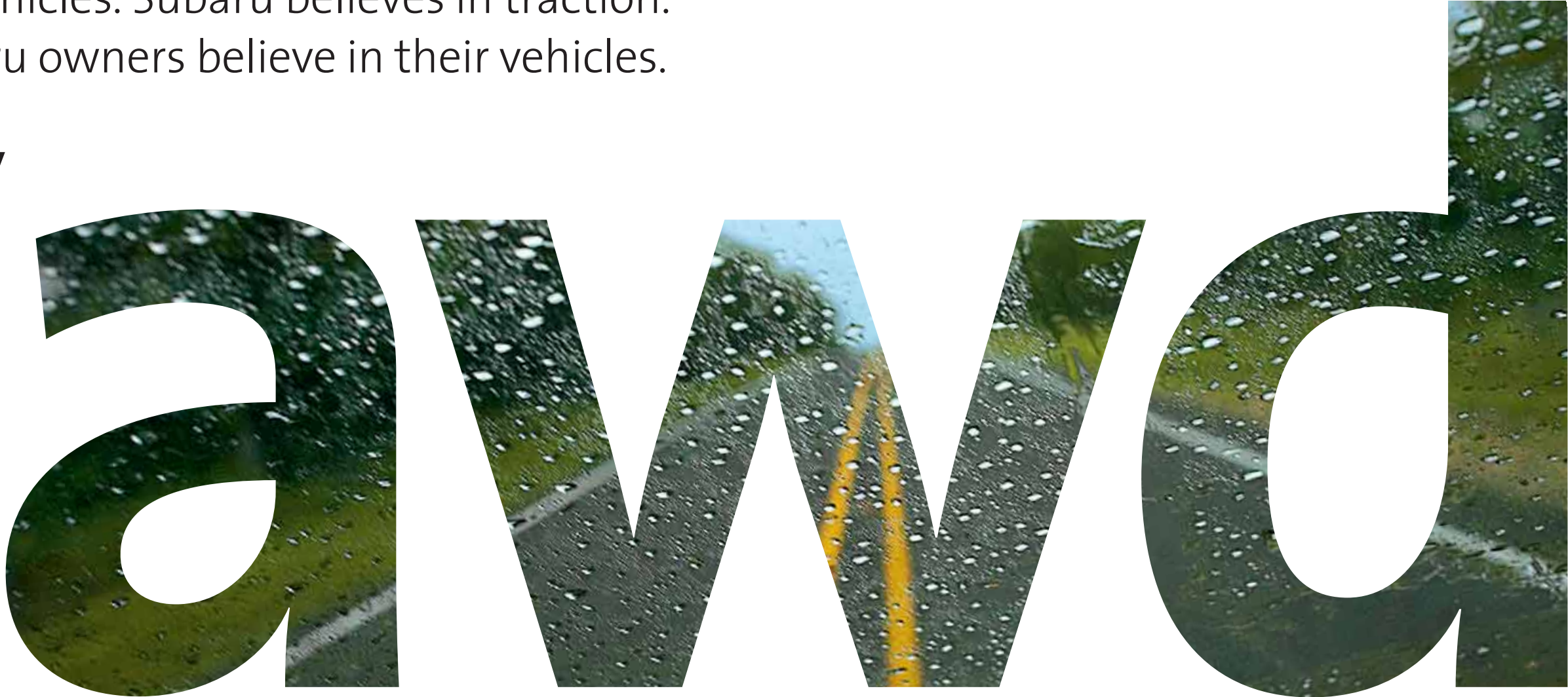
¹ Rating based on Insurance Institute for Highway Safety's (IIHS's) 40-mile-per-hour frontal crash test, 31-mile-per-hour side-impact test, and 20-mile-per-hour rear-impact test. For more information, contact IIHS or visit their website at www.iihs.org.

² Star ratings are part of the U.S. Department of Transportation's [safercar.gov](http://www.safercar.gov) program. (www.safercar.gov)
³ Always wear seatbelts. Children should be properly restrained in the rear seat.



Subaru Symmetrical All-Wheel Drive is the result of passionate engineering focused on giving drivers the best traction possible. Better traction means better handling and **control**. It expands a vehicle's versatility and capability. Traction increases the trust and confidence drivers can put in their vehicles. Subaru believes in traction. It's why Subaru owners believe in their vehicles.

why



AWD

All Weather Conditions

Snow and rain can surprise even the best planners. Be ready with the exceptional traction and control of Subaru AWD.

Accident Avoidance

When danger steps into your path, the safest route is to step right around it. The trademark traction and control of Subaru AWD helps you stay safe by staying ready.

Spirited Handling

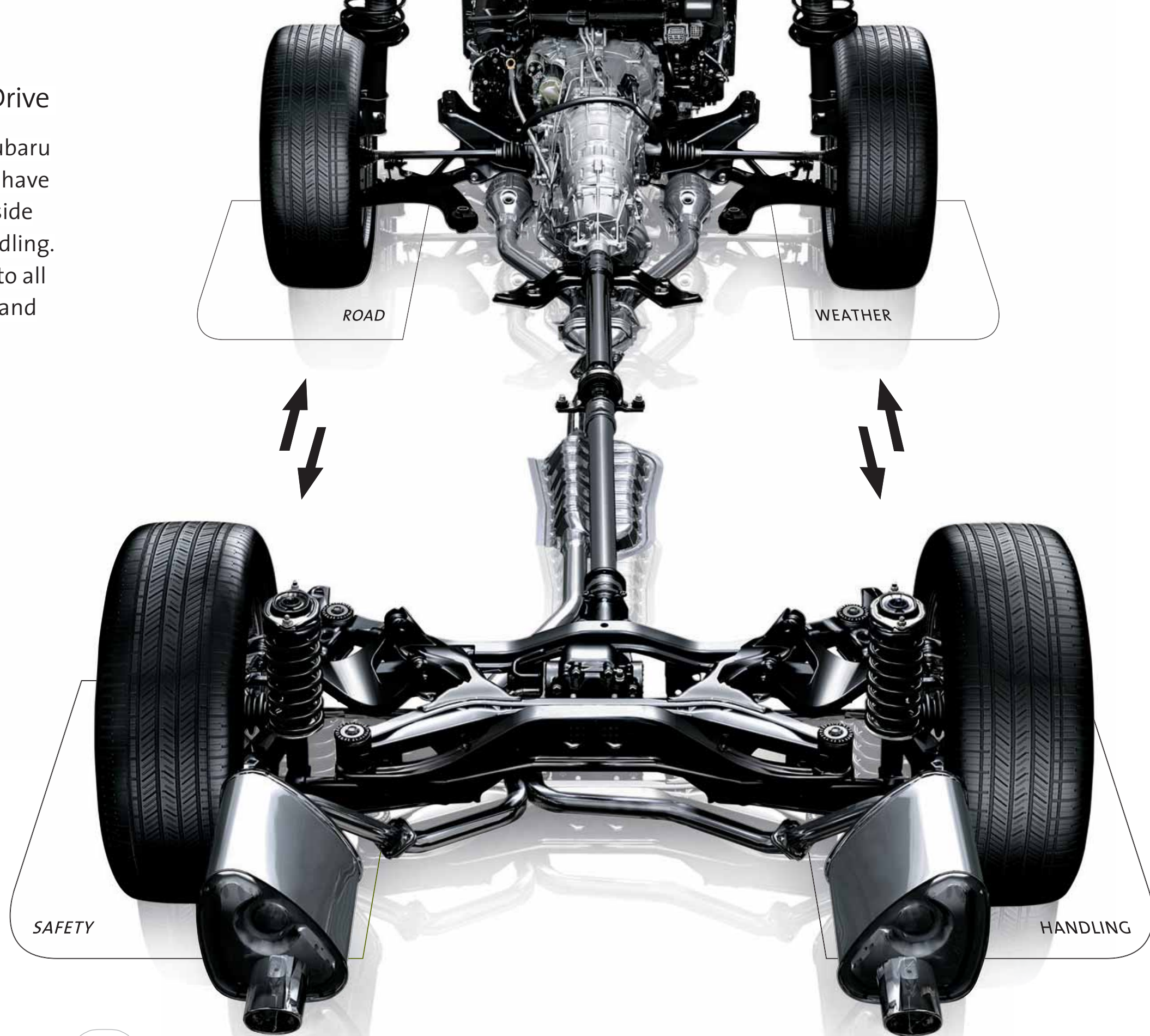
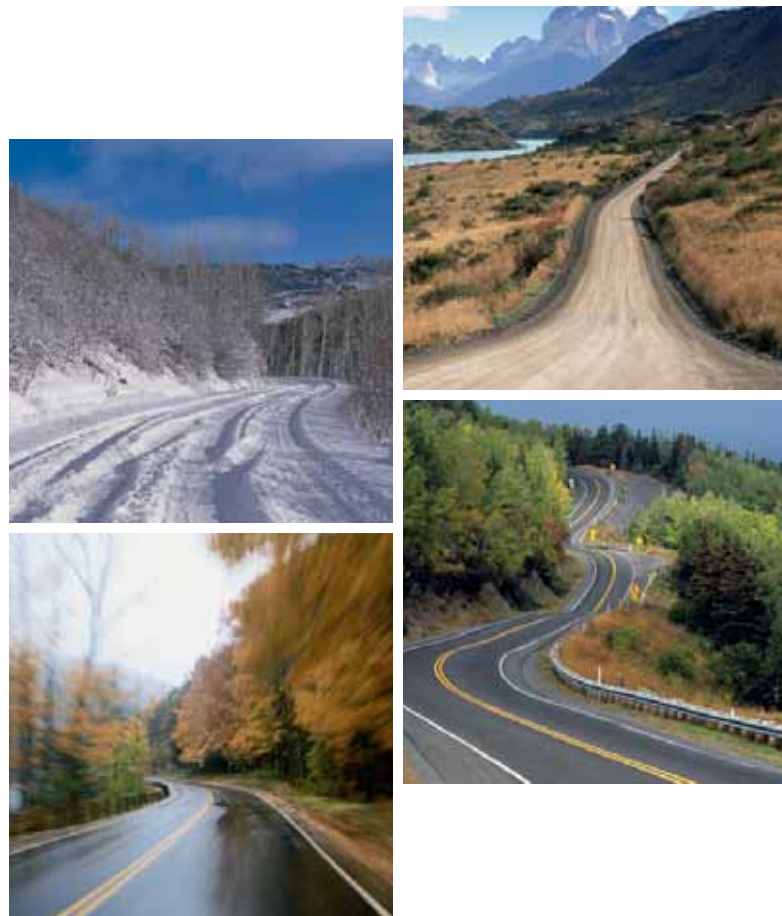
You won't be the first to be surprised by the handling and agility of the Tribeca. Subaru AWD maximizes the feeling of being connected to the road with its remarkable balance and grip.

Multiple Road Types

The best adventures don't always happen on immaculate asphalt. Subaru AWD helps give you the freedom to stray off the beaten path onto gravel, dirt, or other road types with confidence.

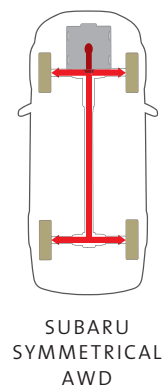
The Advantages of Subaru Symmetrical All-Wheel Drive

All AWD systems are not the same. For more than 30 years, Subaru has been engineering Subaru Symmetrical All-Wheel Drive to have distinct advantages over other systems. Almost total side-to-side symmetry creates optimal balance for stability and sharp handling. And since power flows in a more direct path from the engine to all four wheels, it works with brilliant efficiency for secure grip and quicker response to slippage.

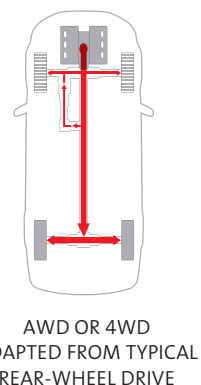
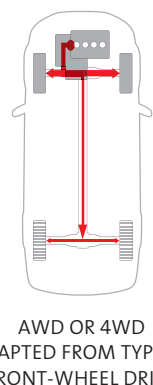


Better Balance

Every Subaru is built for AWD from the ground up. This allows us to build a balanced, symmetrical drivetrain that is free of the extra components some other systems need to get power to all four wheels. This symmetry and balance means stability that makes driving your Subaru safer and agility that makes it more fun.



VS.



Quicker Response

There are only four small patches of rubber that keep you in control of your vehicle. The more your tires are engaged, the more control you have. Subaru keeps more power routed to all four tires than some other systems that only fully engage all wheels as a reaction to slippage that has already occurred.

Efficient Design

Because power in some adapted systems must route through extra components, these systems not only sacrifice efficiency, but also can incur more wear and tear. Subaru routes power directly from the engine to all four wheels to keep components—and frictional power losses—to a minimum.

Engine and Suspension

An SUV doesn't have to drive like one. The remarkable agility of the Tribeca begins with its ultra-smooth SUBARU BOXER engine. A lower center of gravity means that while supplying clean and efficient power, this engine design actually helps maintain vehicle balance. Then there's the 4-wheel independent suspension that helps the Tribeca provide a responsiveness and stability that drivers can feel.



Tribeca Limited in Quartz Silver Metallic.



Subaru Boxer Engine

The unique 256-horsepower 3.6-liter 6-cylinder SUBARU BOXER engine of the Tribeca is designed to deliver increased punch when you need it and smooth acceleration anytime. It's horizontally opposed configuration helps give the Tribeca a lower center of gravity, enhancing stability and precision handling for the drive.

Double Wishbone Rear Suspension

A smoother ride for you and your passengers starts with the fluid, yet responsive double wishbone rear suspension. It works in concert with the front suspension to enhance stability and control, allowing you to take corners with spirited performance while providing a smooth ride.

5-Speed Sportshift Automatic Transmission

The 5-speed SPORTSHIFT® automatic transmission allows you to take manual control over how the Tribeca shifts for greater driver involvement and access to power when you want it for passing or climbing hills.



Zero Landfill

In 2004, Subaru of Indiana Automotive (SIA) became the first manufacturing facility in the U.S. to reach zero landfill status—nothing from its manufacturing efforts ever goes into a landfill.

Protecting Wildlife

In 2003, SIA became the first U.S. automotive assembly plant to be designated a wildlife habitat. Subaru shares the site with numerous natural residents including deer, blue herons and beavers.

Durability and a low impact on the **environment** have long made Subaru vehicles the choice of drivers who want to enjoy the beauty of the natural world. By eliminating pollutants during the production process and creating efficient, low-emission vehicles, Subaru works diligently to protect that beauty and the earth we all share.



Your Subaru. **Your way.**



Tribeca

Performance and value. Get the full complement of safety features that Tribeca has to offer, plus a 7-inch in-dash multifunction screen, digital dual-zone climate control and a tri-split, reclining, sliding and folding 2nd row. In the cargo area is a sizeable underfloor tray.

Tribeca Limited

It's a more luxurious way to enjoy Tribeca versatility and performance, with more features and refinement. A moonroof, leather-trimmed upholstery and heated front seats enhance comfort. Roof rails let you carry more cargo.¹ And a premium audio system with 6-disc in-dash CD changer gives you more music.

¹ Accessory cross bars required. See your dealer.



Available 3rd-Row Seating

Expand your options to create full 7-passenger seating capacity with the optional 3rd-row seat. It has a 50/50-split for versatility so you can fold it completely into the floor when not in use. And it's easy to access from both sides thanks to the sliding 2nd row. It also features rear auxiliary air conditioning, so passengers can control their climate.

Tribeca® Specifications

ENGINE AND DRIVETRAIN	TRIBECA AND TRIBECA LIMITED
Engine	3.6-liter DOHC aluminum-alloy 24-valve 6-cylinder horizontally opposed SUBARU BOXER® engine with Dual Active Valve Control System (DAVCS). Low-friction pistons. Iridium spark plugs.
Power	256 hp @ 6,000 rpm
Torque	247 lb-ft @ 4,400 rpm
Transmission	Standard 5-speed adaptive electronic direct-control automatic with SPORTSHIFT® manual control
Emissions	Certified Low Emission Vehicle (LEV2 LDT2)
FUEL	
Fuel economy (city/highway)	16/21 mpg ¹
Fuel requirement	Unleaded gasoline (87 octane)
SYMMETRICAL ALL-WHEEL DRIVE	
Variable Torque Distribution (VTD)	VTD All-Wheel Drive utilizes an electronically controlled variable transfer clutch in conjunction with a planetary-type center differential. Torque distribution is normally configured at a performance-oriented rear-wheel-biased 45/55-split front-to-rear. Utilizing Vehicle Dynamics Control (VDC) sensors, VTD All-Wheel Drive evaluates road conditions by continually estimating surface friction and adjusting torque distribution accordingly front-to-rear for optimum traction.
STABILITY AND TRACTION	
Vehicle Dynamics Control (VDC)	Standard VDC electronic stability control utilizes sensors which constantly monitor wheel speeds, steering angle, brake pressure, vehicle yaw rate and lateral g-forces. If VDC detects a difference between the driver's intended path and the one the vehicle is actually taking, VDC applies braking power and/or reduces engine torque to help correct vehicle path.
Traction Control System (TCS)	VDC also incorporates an all-wheel, all-speed traction control system which senses a loss of traction and applies braking force to the slipping wheel or wheels as necessary to maintain vehicle motion.
CHASSIS	
Steering	Engine-speed-sensing power-assisted rack-and-pinion. Turns lock-to-lock: 3.4. Turning circle: 37.4 feet.
Suspension	Performance-tuned 4-wheel independent raised suspension. Front: Strut-type with lower L-arm. Stabilizer bar. Rear: Double wishbone. Stabilizer bar.
Brakes	4-wheel disc, ventilated front and rear. 4-channel, 4-sensor ABS with Electronic Brake-force Distribution (EBD).
Brake Assist	When emergency braking is detected by how quickly the brake pedal is pressed, maximum brake pressure is immediately applied.
Brake discs	Front: 12.3 inches/ Rear: 12.4 inches
WHEELS AND TIRES	
Wheels	18 x 8.0-inch 5-dual-spoke aluminum alloy
Tires	255/55 R18 104H M+S all-season
EXTERIOR DIMENSIONS	
Length	191.5 inches
Width (including side mirrors)	88.8 inches
Height	66.4 inches (67.7 inches with roof rails)
Wheelbase	108.2 inches
Track (front/rear)	62.2 inches/62.1 inches
Base curb weight ²	4,140 lbs
INTERIOR DIMENSIONS	
Headroom (front/rear)	40.3 inches/38.2 inches (38.9 inches/38.2 inches with moonroof)
Legroom (front/2nd row/available 3rd row)	42.3 inches/34.3 inches/30.9 inches
Shoulder room (front/2nd row/available 3rd row)	58.1 inches/57.5 inches/51.3 inches
Passenger volume (5-passenger/7-passenger)	104.2 cubic feet /133.5 cubic feet
Cargo volume (5-passenger/7-passenger)	37.6 cubic feet with rear seats raised/8.3 cubic feet with 2nd- and 3rd-row seats raised
Maximum cargo volume (5-passenger/7-passenger)	74.4 cubic feet with rear seats lowered/74.4 cubic feet with 2nd- and 3rd-row seats lowered

TribecaEquipment

EXTERIOR	TRIBECA	TRIBECA LIMITED
Projector-beam low-beam and multireflector high-beam headlights and foglights	•	•
Aluminum-alloy hood	•	•
Chrome-finished door handles	•	•
Body-color power mirrors with integrated turn signals	•	•
Heated side mirrors and windshield wipers de-icer	•	•
2-speed windshield wipers with variable intermittent mode and mist feature	•	•
Single-speed rear-window wiper with de-icer and speed-sensitive intermittent mode (when rear wiper is on, selecting reverse gear activates maximum wiping speed)	•	•
Dual polished chrome exhaust outlets	•	•
Power tilt/sliding-glass moonroof	–	•
Privacy glass for rear doors, rear quarters and rear gate	•	•
Black-finish raised roof rails (150 lbs capacity)	–	•

SEATING AND TRIM

8-way power driver's seat and 4-way power front-passenger's seat, both with manually adjustable lumbar support	•	•
3-stage heated front seats	–	•
2-position driver's seat memory	–	•
60/40-split sliding 2nd-row seats with 7.8-inch fore/aft travel and driver/passenger-side tip-forward/slide function for 3rd-row (if equipped) entry/exit	•	•
60/40-split reclining 2nd-row seatbacks. 40/20/40-split flat-folding 2nd-row seatbacks.	•	•
Rear-center armrest	•	•
Leather-wrapped 3-spoke steering wheel with manually adjustable tilt column	•	•
Leather-wrapped shifter handle	•	•
Leather-trimmed upholstery	–	•
Premium cloth upholstery	•	–
Silver metallic trim on dashboard, doors and center console	•	•

CONVENIENCE FEATURES

Power front and rear windows with driver's auto-down	•	•
Electronic cruise control	•	•
Integrated key fob with door lock/unlock, rear gate unlock and panic function	•	•
Center console with armrest, enclosed storage compartment and rear storage drawer	•	•
Dual cupholders in center console with retractable lid and backlighting	•	•
Dual cupholders in rear-center armrest. Cupholder in each rear-cabin-area side panel.	•	•
Four bottle holders in door storage pockets	•	•
Overhead console with dual maplights and sunglasses storage	•	•
HomeLink® remote transmitter with 3 memory settings	–	•
Remote starter prewiring ³	•	•
Courtesy lighting in overhead console, doors, rear-cabin area, cargo area and tailgate	•	•
Automatic ambient lighting of center console area	–	•
Illuminated front- and 2nd-row footwells (when entering or exiting vehicle)	•	•
Dual 12-volt power outlets in center console storage compartment. Dual 12-volt power outlets in cargo area.	•	•
Cargo-area underfloor storage	•	•
Storage compartment with net in cargo-area side panel	•	–
4 cargo-area tiedown hooks and dual cargo-area grocery hooks.	•	•

AUDIO SYSTEMS

100-watt 6-speaker audio system with single-disc in-dash CD player and MP3 compatibility	•	–
160-watt 9-speaker premium audio system with subwoofer, 6-disc in-dash CD changer and MP3 compatibility	–	•
Auxiliary audio jack for portable media players	•	•
XM® or SIRIUS® Satellite Radio capability ³	•	•
Steering wheel-mounted audio controls	•	•

INSTRUMENTATION

Analog speedometer and tachometer with illuminated red needles on black faces and white indicators	•	•
Digital coolant temperature and fuel gauges. Digital odometer and automatic transmission shift-position indicator.	•	•
Electroluminescent lighting	•	•
Multifunction screen displaying clock, audio system, ambient temperature and fuel economy information	•	•

CLIMATE CONTROL	TRIBECA	TRIBECA LIMITED
Dual-zone automatic climate control system with air filtration and controls for temperature, 6-speed fan, airflow direction, automatic mode and CFC-free air conditioning	●	●
SECURITYKEYLESS ENTRY SYSTEM WITH TAILGATE UNLOCK AND ANSWER-BACK ELECTRONIC CHIRP	●	●
Keyless entry system with tailgate unlock and answer-back electronic chirp	●	●
Antitheft security system with engine immobilizer and answer-back electronic chirp	●	●
SAFETY		
ACTIVE		
Subaru Symmetrical All-Wheel Drive	●	●
SUBARU BOXER engine	●	●
4-wheel Anti-lock Braking System (ABS) with Electronic Brake-force Distribution (EBD)	●	●
Performance-tuned 4-wheel independent raised suspension	●	●
Vehicle Dynamics Control (VDC)	●	●
Traction Control System (TCS)	●	●
Brake Assist	●	●
Tire Pressure Monitoring System (TPMS)	●	●
Daytime Running Lights (DRL)	●	●
PASSIVE		
Dual-stage deployment driver's and front-passenger's front airbags (SRS) ⁴	●	●
Subaru advanced frontal airbag system ⁴	●	●
Side-curtain airbags protecting front and outboard 2nd-row occupants (SRS) ⁴	●	●
Seat-mounted front side-impact airbags (SRS) ⁴	●	●
Height-adjustable active front-seat head restraints	●	●
Three individual height-adjustable 2nd-row head restraints. Two individual height-adjustable 3rd-row (if equipped) head restraints.	●	●
3-point height-adjustable outboard 2nd-row and fixed 2nd-row center seatbelts. 3-point fixed 3rd-row (if equipped) rear seatbelts.	●	●
Automatic and Emergency Locking Retractors at all seating positions	●	●
Rear child-safety door locks. LATCH system: Lower Anchors and Tethers for Children.	●	●
Energy-absorbing collapsible steering column. Safety brake pedal system.	●	●
Ring-shaped reinforcement frame body structure	●	●
Rollover sensor	●	●
OPTIONAL EQUIPMENT		
3rd-row seats with 50/50-split flat-folding 2nd-row seatbacks	○	○
Rear cabin air conditioner with control for 4-speed fan ⁵	○	○
Touch-screen GPS navigation system with multifunction screen displaying audio system information, trip computer functions, outside temperature, maintenance intervals, controls for various vehicle settings, calendar, calculator and memo-taking function. Video input from rear-seat DVD entertainment system (available with 3rd-row seating only) may also be displayed (if equipped and with vehicle in Park).	–	○
Rear-vision camera ⁶	–	○
Rear-seat DVD entertainment system with 9-inch widescreen format, 2 wireless headsets, wireless remote, and auxiliary inputs for game console, video camera or other multimedia device	–	○ ⁷
XM Satellite Radio ⁸	–	○

● Standard ○ Optional – Not available

¹ Preliminary fuel economy estimates. Actual mileage may vary. ² Curb weight figure based on base Tribeca model. ³ Remote starter and satellite radio are available as accessories. Satellite radio hardware and required monthly subscription sold separately. See your dealer. ⁴ The Supplemental Restraint System (SRS) (airbags) affords the driver and front passenger additional protection in moderate to severe frontal and side-impact collisions, and outboard 2nd-row passengers additional protection in moderate to severe side-impact collisions. This system provides supplemental protection only, and seatbelts must be worn in order to avoid injuries to out-of-position occupants upon bag deployment and to provide the best combined protection in a serious accident. Children should always be properly restrained in the rear seat. ⁵ Included with optional 3rd-row seating. ⁶ Included with optional navigation system. ⁷ Available only with optional 3rd-row seating. ⁸ XM Satellite Radio hardware included when equipped with optional navigation system. Activation and monthly subscription sold separately. See your dealer.

Some images shown are for illustration purposes only. Specifications in this brochure are based on the latest product information available at the time of publication. For the most up-to-date product information, log-on to www.subaru.com. Some equipment shown in photography in this brochure is optional at extra cost. Specific options may be available only in combination with other options. Specific combinations of equipment or features may vary from time to time and by geographic area. Certain accessories and equipment may not be available at the time of publication. Subaru of America, Inc., reserves the right to change or discontinue at any time, without notice, prices, colors, materials, equipment, accessories, specifications, models and packages without incurring any obligation to make the same or similar changes on vehicles previously sold. Colors shown may vary due to reproduction and printing processes.

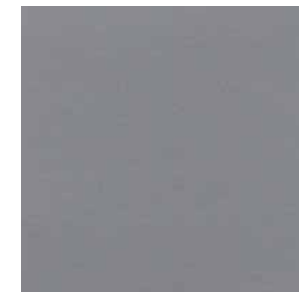
This brochure was prepared by Subaru of America, Inc. A warranty from Subaru of America, Inc., is available only on cars sold to the first retail purchaser through an authorized Subaru dealer in the continental U.S. or Alaska. Subaru, SUBARU BOXER, Subaru Added Security and Tribeca are registered trademarks. XM is a registered trademark of XM Satellite Radio, Inc. Sirius is a registered trademark of Sirius Satellite Radio, Inc. iPod is a registered trademark of Apple Computer, Inc. SPORTSHIFT is a registered trademark of Prodrive Ltd. HomeLink is a registered trademark of Prince Corporation, a wholly-owned subsidiary of Johnson Controls. For more information, contact your Subaru dealer or log-on to www.subaru.com.

Colors

Paint



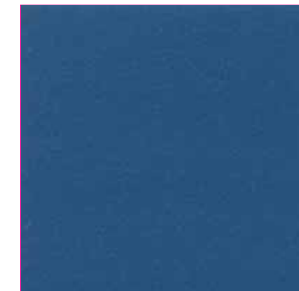
Satin White Pearl



Quartz Silver Metallic



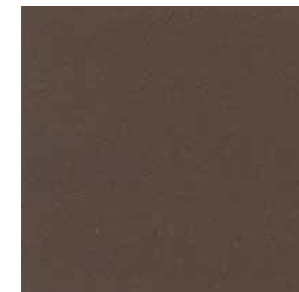
Harvest Gold Metallic



Newport Blue Pearl



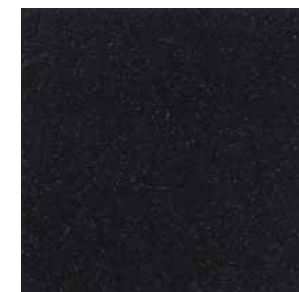
Ruby Red Pearl



Deep Bronze Metallic

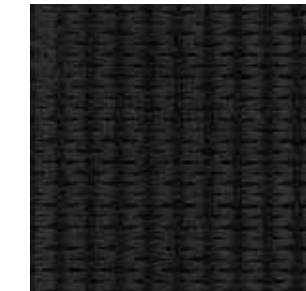


Diamond Gray Metallic

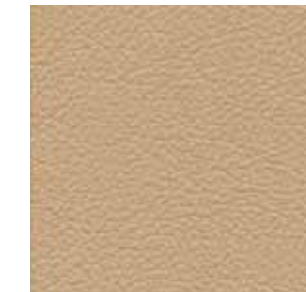


Obsidian Black Pearl

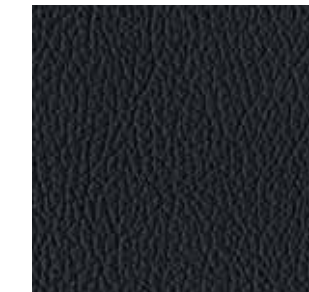
Upholstery



Slate Gray Cloth (SGC)



Desert Beige Leather (DBL)



Slate Gray Leather (SGL)

PAINT	Tribeca	Tribeca Limited
Satin White Pearl	–	DBL
Quartz Silver Metallic	SGC	SGL
Harvest Gold Metallic	–	DBL
Newport Blue Pearl	SGC	SGL
Ruby Red Pearl	–	DBL
Deep Bronze Metallic	–	DBL
Diamond Gray Metallic	SGC	SGL
Obsidian Black Pearl	–	DBL

– NOT AVAILABLE



1 All-Weather Mats

Custom-fitted, heavy-gauge protective mats. They help protect vehicle carpet from sand, dirt and moisture. The mats are available for both 5- and 7-passenger applications.

2 Dog Guard/ Compartment Separator

Provides a divider between your cargo or pet and the passenger area of the Tribeca.

3 18-Inch Chrome-Finished Alloy Wheel

Ride even more stylishly with these 18-inch chrome-finished alloy wheels.

4 Rear Bumper Cover

Helps protect upper surface of rear bumper from scratches and dings.

5 Moonroof Air Deflector

This air deflector helps reduce wind noise and cut sun glare.

6 Puddle Lights

L.E.D. lights mounted in the rocker panel trim turn on when the vehicle doors are unlocked using the keyless entry and illuminate the ground to aid entering and exiting the vehicle.

7 Cargo Net-Rear

Neatly holds cargo and prevents it from sliding about while the vehicle is in motion.

8 Auto-Dimming Mirror with Compass

The rearview mirror darkens to help reduce glare when headlights are detected from behind the vehicle. It also features an integrated electronic compass display.

9 Hood Protector

The hood protector is made from a durable acrylic material that helps shield the hood from bugs and stone chips.

10 Subwoofer

This subwoofer delivers big bass sound from a small package. Powered by an integrated amplifier, the entire unit mounts under the driver's seat.

11 Front Bumper Underguard

Adding a touch of style to a rugged profile, the front bumper underguard protects the lower bumper area from brush and debris.

12 Remote Engine Starter

Conveniently allows vehicle to be started by remote control (up to 400 feet away depending on obstructions), so that the vehicle's interior temperature is more comfortable upon entry.

Make a Subaru your Subaru with Genuine Subaru **accessories**. With everything from styling enhancements to storage solutions, you can outfit your Subaru to be as unique as your adventures. Backed by a 3-year or 36,000-mile limited warranty, they're built with Subaru reliability in mind.



Your Subaru will be a vehicle you can love for years to come. That's the promise delivered by our comprehensive warranties, Roadside Assistance Program, and outstanding vehicle reliability. It's a promise attested to by the fact that 95% of Subaru vehicles sold in the past ten years are still on the road today.¹

Love. It's what makes a Subaru, a Subaru.

Subaru Added Security

It's possibly the most important option you choose. Protect your investment with a Subaru® Added Security® extended service contract—the only one backed by Subaru of America, Inc. Ask your salesperson for coverage details and assistance in selecting the plan that's best for you—up to 7 years or 100,000 miles.

Subaru.com

Begin your Subaru experience right in your own home. Here, you can find extensive information, including specs, photos and reviews. Build your own Subaru, locate dealers, and schedule a test drive. After your purchase, activate your free My.Subaru site, where Subaru owners can track their vehicles' service histories, schedule service appointments, receive special offers exclusive to My.Subaru members, and much more.

The Subaru Roadside Assistance Program

This comprehensive package covers all 2009 Subaru vehicles during the first 3 years or 36,000 miles, whichever comes first. By calling the toll-free number in the Owner's Information Kit, Subaru owners can take advantage of any of the following benefits:

- 24-Hour Roadside Assistance, seven days a week, 365 days a year, throughout the United States.
- Emergency Towing Service to the nearest authorized Subaru dealer.
- Emergency Roadside Assistance for jump starts, gasoline (up to two gallons), flat tire change, emergency lockout service (lost key or key is locked in the vehicle), and emergency fluid replacement.

Powertrain Limited Warranty

5 years or 60,000 miles, whichever comes first.

Rust Perforation Limited Warranty

5 years, unlimited mileage.

New Car Limited Warranty

3 years or 36,000 miles, whichever comes first.

Wear Item Limited Warranty

3 years or 36,000 miles, whichever comes first. We cover you where others don't. Repairs to the following items will also be covered under warranty:

- Brake Pads
- Wiper Blades
- Clutch Linings
- Transmitter Batteries

Insurance Privileges for Subaru Owners

The driving experience is only one of the benefits of Subaru ownership. Through Subaru Advantage Insurance by Liberty Mutual, Subaru owners may be eligible for an exclusive rate on auto and home insurance just for owning a Subaru. To learn more about Subaru Advantage Insurance and the special features designed for Subaru owners, visit www.subaru.com.

¹ Based on R. L. Polk & Co. registration data in the U.S. 1998 to July 2007.

I'm a long time Subaru fan and was so excited to see an even bigger Subaru introduced. So, I test-drove the Tribeca and I loved it • I was extremely impressed by the Tribeca. What a beautiful car, inside and out • My friends love my Tribeca because we no longer have to split up and take two cars. We all fit in the Tribeca • I would just like to thank everyone at Subaru for making such an excellent product • I check the Insurance Institute for Highway Safety from time to time and Subaru is always in the top of the list • A few years back, I requested that Subaru make an SUV and you met that request when you introduced the Tribeca • **The Subaru Tribeca, in the words of those who own them** • Nice job on the new design. It looks good, and the reviews are equally complimentary • Not only am I completely happy with my Tribeca, the whole family is • I've got my sights on a Tribeca when it's time for my next Subaru. It's elegant and the perfect car for my needs • We were recently in an accident and we're so grateful to the Tribeca for keeping us safe • We bought our first Subaru, the Tribeca, and love it. We will always own a Subaru from now on.



Love. It's what makes a Subaru, a Subaru.



subaru.com



This brochure was printed with vegetable-based inks and produced using a "Green Printing Process" and FSC standards. The Forest Stewardship Council (FSC) is an international organization that brings people together to find solutions which promote responsible stewardship of the world's forests and environments.

By producing this brochure in a green way rather than by traditional methods, we saved 127.74 fully grown trees; 54,261 gallons of water; 90M BTU's of energy; 6,004 lbs. of solid waste; and 11,821 lbs. of greenhouse gases!