



# G R A N D V I T A R A

S U Z U K I 2 0 1 1





TRAVEL LIGHT



LIVE FULLY





4WD

SAFETY

NAVIGATION

FEATURES

SPECS



**GRAND VITARA LIMITED 4WD**  
Shown in Black Pearl



4WD

SAFETY

NAVIGATION

FEATURES

SPECS

Vehicle shown upon a designated off-road trail. Along with concerned conservationists everywhere, Suzuki® urges you to Tread Lightly!® on public and private land. Preserve your future off-roading opportunities by showing respect for the environment, local laws and the rights of others.

## TRACTION



**4WD High** is great for most driving conditions. It helps give you smooth on-road performance and all-weather traction.



**4WD High Lock** powers you through snow and mud by distributing traction evenly to front and rear wheels.



**4WD Low Lock** helps give you the traction you need to get out of — or into — the toughest road and off-road conditions.



P O W E R T R A I N

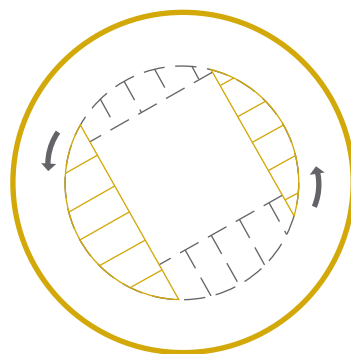
4 W D

## 452 MILES

THAT'S HOW MANY HIGHWAY MILES YOUR GRAND VITARA'S **HEFTY GAS TANK AND FUEL-EFFICIENT DRIVETRAIN** CAN RACK UP BETWEEN FILL-UPS. PASSENGER BEWARE: THIS ALSO MEANS FEWER CONVENIENCE STOPS AT HIGH-PRICED GAS STATIONS EN ROUTE.

## INTAKE

Ever wish you could get the same powerful engine torque at low speeds that you experience at high speeds? Grand Vitara's **Variable Induction System (VIS)** gives you just that — automatically.



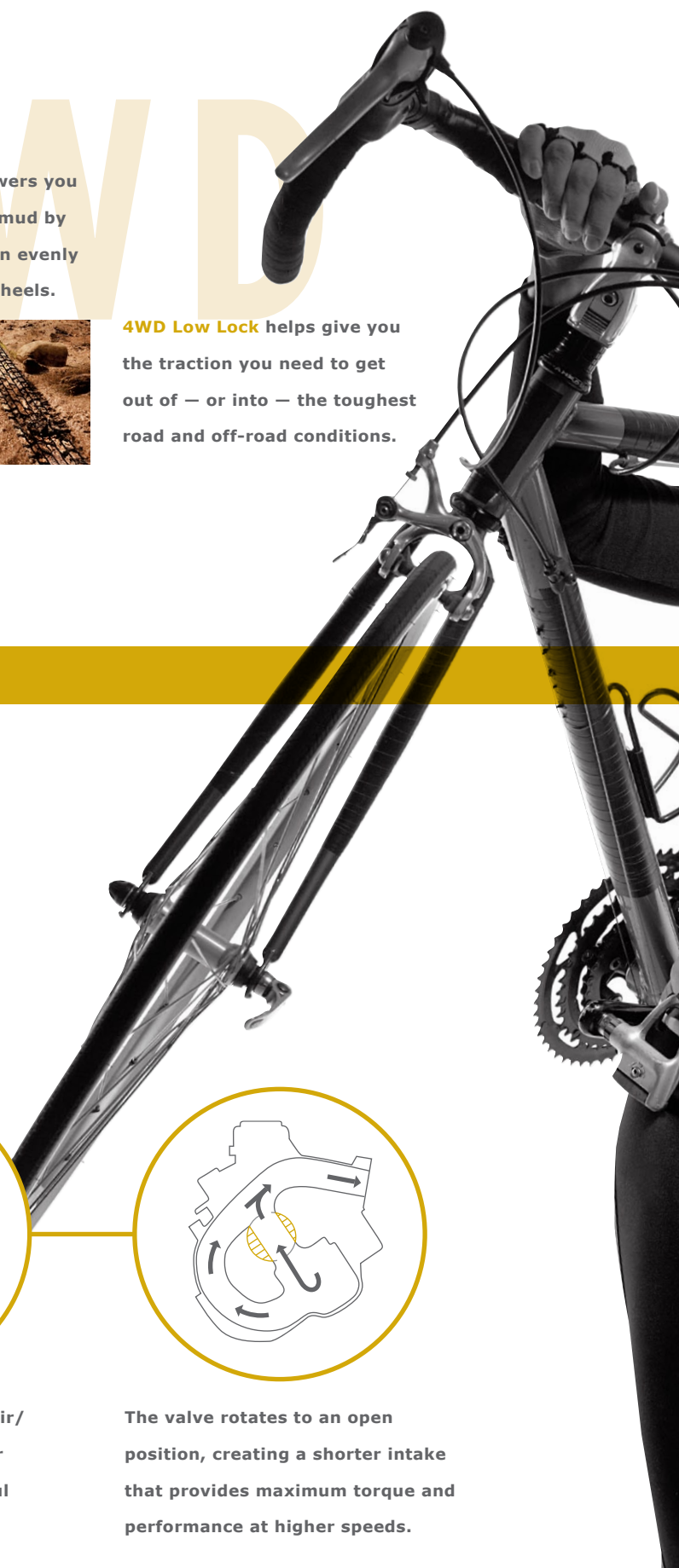
The rotating intake manifold tuning valve adjusts automatically to create the optimal intake length for the full RPM range.



The closed valve routes the air/fuel mixture through a longer intake that creates a powerful torque output at lower RPMs.



The valve rotates to an open position, creating a shorter intake that provides maximum torque and performance at higher speeds.





## ADVENTURE PRIMED

Kayaking down Colorado's Escalante Canyon? Sounds great! Let's load up and go. That's exactly why you need a vehicle that's as **primed and ready as you are for the next big adventure.**

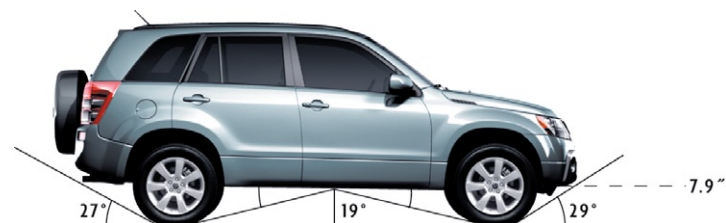


## FREEDOM

Erica's bike is an extension of herself — a tool that creates opportunities and enhances her lifestyle. That's what Grand Vitara is all about. Its only agenda is to help realize your own gut checklist of must-do's.

## 29°

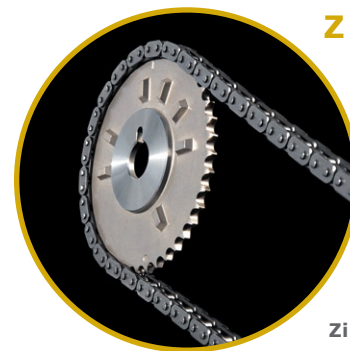
Grand Vitara's 4x4 **high-ground clearance combined with high approach, ramp breakover and departure angles** give you the wicked confidence that you could take on Mt. McKinley.



## LEADER OF THE PACK

| VEHICLE                     | 4-MODE 4WD       | 4WD LOCK         | GROUND CLEARANCE |
|-----------------------------|------------------|------------------|------------------|
| <b>Suzuki Grand Vitara®</b> | <b>Available</b> | <b>Available</b> | <b>7.9"</b>      |
| <b>Hyundai Tucson®</b>      | Not Available    | Not Available    | 6.7"             |
| <b>Toyota RAV4®</b>         | Not Available    | Not Available    | 7.5"             |
| <b>Honda CR-V®</b>          | Not Available    | Not Available    | 6.7"             |

"WE WHEELED THE NEW GV OVER SOME ROCKY TRAILS IN THE HARDSCRABBLE HILL COUNTRY, INCLUDING SOME FAIRLY TECHNICAL STRETCHES OF GRILLE-DEEP WATER CROSSINGS, ROCKY WASH-OUTS, AND STEEP HILL CLIMBS OF LOOSE DIRT, AND IT HANDLED PRETTY MUCH EVERYTHING WE COULD THROW AT IT." **FOUR WHEELER** JANUARY 2009



## ZERO

The self-lubricating, **high-performance timing chain** requires zero maintenance, unlike a timing belt. That's right. Zero. Zilch. Nada.

BEST MPG  
AMONG OFF-ROAD  
CAPABLE SUVs.

AWARD-WINNING

GRAND VITARA



**GRAND VITARA LIMITED 4WD**  
Shown in Volcano Red Metallic





4WD

SAFETY

NAVIGATION

FEATURES

SPECS

## TAKE CHARGE

You and your ATV need a sweet ride for some well-deserved deep-dirt therapy? Grand Vitara will get you into the fun zone and back to tell the tales.



## HERITAGE

Sharing the same white-hot genetics with Suzuki's world-class motorcycles, Grand Vitara's destiny is to own the category.

## SECURE

Tim lives life in high gear. But the thrill's in putting his abilities against the challenge, not in risking his safety. He protects himself with the best gear he can get his hands on — just as Grand Vitara does.



## SAFETY

## STRENGTH



## PROTECTION

STANDARD FEATURES LIKE ELECTRONIC STABILITY PROGRAM, TRACTION CONTROL SYSTEM (TCS), SIDE-IMPACT DOOR BEAMS, ROLLOVER-SENSOR AIR BAGS, TPMS AND FRONT- AND REAR-SIDE CURTAIN AIR BAGS HELP PROTECT IN POSSIBLE SIDE-IMPACT COLLISIONS. THEY DEPLOY AND DEFLATE FASTER THAN A RATTLESNAKE STRIKES.



## OUTDOES THE COMPETITION

| VEHICLE                    | MAXIMUM TOWING   | FLAT TOW CAPABLE | CHASSIS  |
|----------------------------|------------------|------------------|--|
| <b>Suzuki Grand Vitara</b> | <b>3,000 lbs</b> | <b>Available</b> | <b>Reinforced Unibody with Built-in Ladder Frame</b> |
| <b>Honda CR-V®</b>         | 1,500 lbs        | Available        | Car-based Unibody                                    |
| <b>Nissan Rogue®</b>       | 1,500 lbs        | Not Available    | Car-based Unibody                                    |
| <b>Toyota RAV4®</b>        | 1,500 lbs        | Not Available    | Car-based Unibody                                    |
| <b>Jeep Patriot®</b>       | 2,000 lbs        | Not Available    | Car-based Unibody                                    |

Grand Vitara's standard **projector beam headlamps** cut through the dark giving you a deeper, more focused beam on the road ahead.



The **Tire Pressure Monitoring System (TPMS)** helps enhance safety and fuel economy and gives you one less thing to be concerned with.

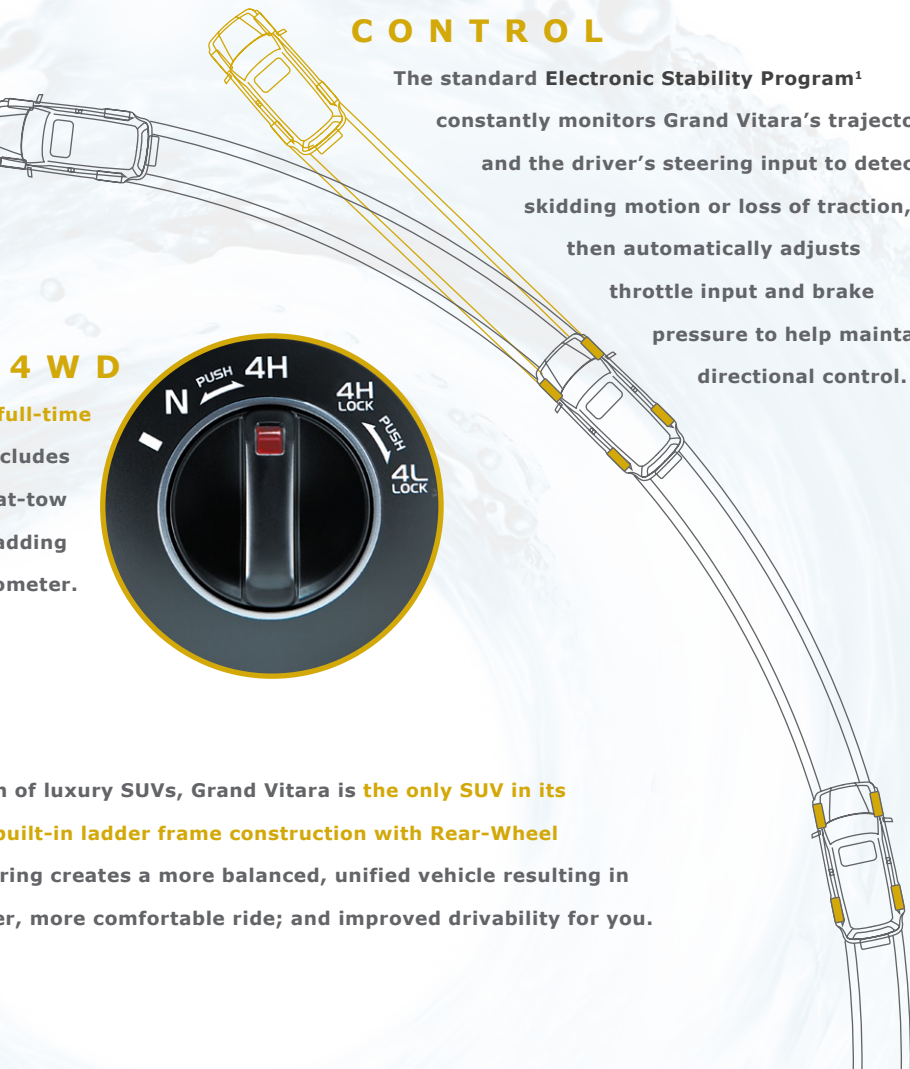


**4-wheel ventilated disc brakes** help give you stopping power and the **Anti-lock Braking System (ABS)** helps keep you in control.



## CONTROL

The standard **Electronic Stability Program<sup>1</sup>** constantly monitors Grand Vitara's trajectory and the driver's steering input to detect skidding motion or loss of traction, then automatically adjusts throttle input and brake pressure to help maintain directional control.

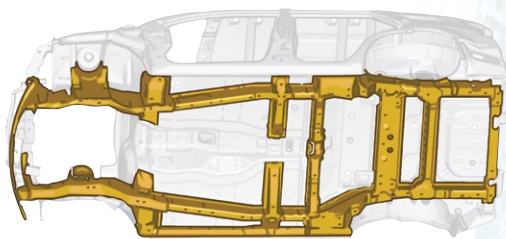


## 4WD

The available **full-time 4-mode 4WD system** includes a neutral setting to flat-tow your vehicle without adding miles to the odometer.



## UNIBODY



## LADDER FRAME

## STRENGTH

No longer the exclusive domain of luxury SUVs, Grand Vitara is **the only SUV in its class to combine unibody and built-in ladder frame construction with Rear-Wheel Drive (RWD)**. This dynamic pairing creates a more balanced, unified vehicle resulting in greater ruggedness; a smoother, more comfortable ride; and improved drivability for you.

CONVENIENCE FEATURES

STANDARD

TOUCHSCREEN

GPS NAVIGATION

STANDARD DRIVER

INFORMATION CENTER

INTUITIVE

CONTROL

BLUETOOTH® HANDS-FREE

COMMUNICATION

SMARTPASS® KEYLESS

START AND ENTRY SYSTEM

ILLUMINATED STEERING

WHEEL CONTROLS

STANDARD AUTOMATIC

CLIMATE CONTROL



**GRAND VITARA LIMITED**

Shown in Black interior



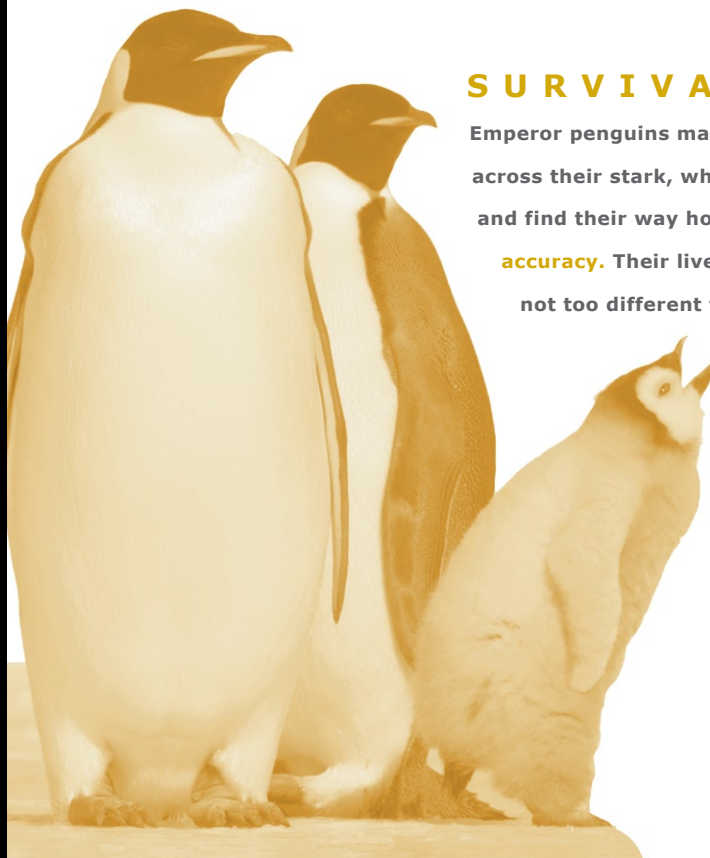
4WD

SAFETY

NAVIGATION

FEATURES

SPECS



## SURVIVAL

Emperor penguins make treks of up to 75 miles across their stark, white landscape for food and find their way home again **with pinpoint accuracy**. Their lives depend on it. Seems we're not too different from penguins after all.



## COPILLOT

Suzuki TRIP®2.0, which stands for Travel, Real-time traffic, Information and Play, is feature-packed for convenient, hassle-free driving. The standard navigation is **integrated into Grand Vitara's audio system** to make sure audio driving directions come in loud and clear. Check out the adjustable **color touchscreen display**, **preloaded 2-D and 3-D maps**, **turn-by-turn voice directions**, **automatic routing**, **route planner**, **handy locator** and a pack of available real-time features you'll love.

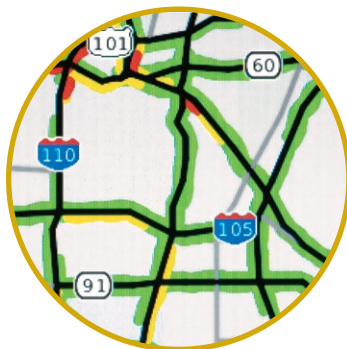
NAVIGATION

DYNAMIC CONTENT

## TOUR GUIDE

What a resource! TRIP 2.0 contains **over 6 million standard points of interest**, such as **hotels, restaurants and even ATMs**. You can also get **one-year access to nuLink!™ services2**, which includes **real-time traffic, low-price gas finder, weather forecast, airline arrival/departure times, Google search for the latest information and more** — an assortment of informative real-time features you'll wonder how you ever left home without.

### TRAFFIC



Move fast and stay informed with **real-time traffic info**. A prompt warns of messy tie-ups ahead and offers re-routing options to keep you moving.

### FUEL PRICES

|             |        |
|-------------|--------|
| Shell       | \$2.60 |
| Phillips 66 | \$2.56 |
| 7-Eleven    | \$2.54 |

Fuel Type

Others may waste a gallon searching for the **lowest gas prices**. But not you. You're the savvy traveler to follow with the available low-price gas finder.

### MOVIES



Jump in your car and hit the red carpet. You've got available real-time (or is it reel-time?) **movie listings with film titles, theaters and show times** at your fingertips.

### EVENTS

|                  |     |
|------------------|-----|
| Slanted Comedy   | 2.7 |
| Last Call Comedy | 19  |
| Broken Lizard    | 19  |

TRIP 2.0's available **Local Events** gives you freedom to search for a destination on the fly. Pick a hot club, a comedy show or wherever your mood takes you.

# BLUETOOTH

## HANDS-FREE

THANKS TO GRAND VITARA'S NAVIGATION WITH AVAILABLE **INTEGRATED BLUETOOTH®**, YOU CAN FIND A RESTAURANT AND MAKE A HANDS-FREE CALL FOR RESERVATIONS FROM A HOT-LINK BUTTON ON THE SCREEN.



4WD

SAFETY

NAVIGATION

FEATURES

SPECS

## BIG LEAGUE COMPARISON

| VEHICLE                    | NAVIGATION      | REAL-TIME TRAFFIC | LOW-PRICE GAS FINDER | WEATHER WARNINGS  | FLIGHT INFORMATION |
|----------------------------|-----------------|-------------------|----------------------|-------------------|--------------------|
| <b>Suzuki Grand Vitara</b> | <b>Standard</b> | <b>Available</b>  | <b>Available</b>     | <b>VAvailable</b> | <b>Available</b>   |
| <b>Lexus RX 350®</b>       | Available       | Available         | Not Available        | Available         | Not Available      |
| <b>BMW X3®</b>             | Available       | Not Available     | Not Available        | Not Available     | Not Available      |
| <b>Mercedes GLK®</b>       | Available       | Available         | Not Available        | Not Available     | Not Available      |

## WEATHER



Be forewarned of weather conditions. **TRIP 2.0's real-time updates keep you advised** of severe weather that may impact your drive.

## FLIGHT INFO



Is your friend's flight on time? Has your departure been delayed? Relax, **TRIP 2.0 provides real-time flight departure and arrival information** for every airport.

## DRIVEN

Like Vanessa, a free-form rock climber, you may have a strong sense of where you're going. But a little help from technology is always welcome.



**GRAND VITARA LIMITED**

Shown in Black interior





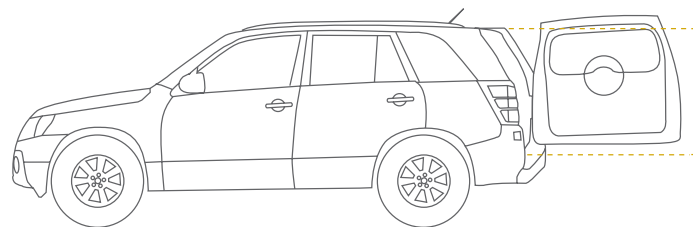
4WD

SAFETY

NAVIGATION

FEATURES

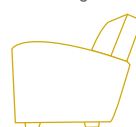
SPECS



41.9" - Suzuki Grand Vitara

33.5" - Jeep Patriot®

33.0" - Nissan Rogue®



## HAULING CAPACITY

Grand Vitara's amazing hauling capacity is easily attributed to its **60/40 split-folding, tumble, second-row seats, side-hinged rear cargo door and generous interior space configuration**. But for Suzuki engineers that wasn't enough. By moving the spare tire to the cargo door, they created a lower lift-over load floor that allows for easier loading of heavier items and an increased height clearance for taller ones.

CONVENIENCE

PACKED

## VERSATILE

Grand Vitara is versatility incarnate. It takes Marchelino and his dog, Spot, comfortably around the block for a Frisbee® marathon or to the top of the continent for a take-no-prisoners off-road adventure.

## COMFORT

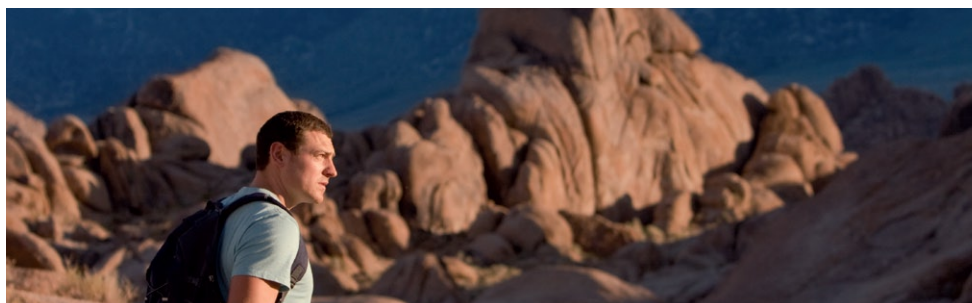
Grand Vitara's standard **6-way adjustable driver's seat** has special **technologically advanced foam** that insulates the seat from road vibration to help reduce your fatigue. The available **heated front leather seats** provide comfort to and from the most rugged camping trip.



The available **rear-vision camera**, built right into your rearview mirror, keeps what's behind you front and center.

## SOUNDS

Tune in your stereo using the **illuminated steering-wheel-integrated audio controls**. It's fully compatible with your own MP3 and WMA™ formatted CDs and a full spectrum of vibrant sound. It's **XM® Satellite Radio** ready and has an available accessory that allows you to connect and play your iPod®.



## THRILL SEEKER

Grand Vitara's **go-anywhere attitude and cargo and towing capacities** make it your go-to adventure vehicle — whether at the California Alabama Hills or beyond.

"THIS CAR IS A MUST-CONSIDER  
IN THE SMALL SUV MARKET."



APRIL 2010

4WD

SAFETY

NAVIGATION

FEATURES

SPECS

## SIMPLE EMPOWERMENT

EASE-OF-USE TAKES A GIANT, TECHNOLOGICAL LEAP WITH GRAND VITARA'S **SMARTPASS KEYLESS START AND ENTRY SYSTEM**.

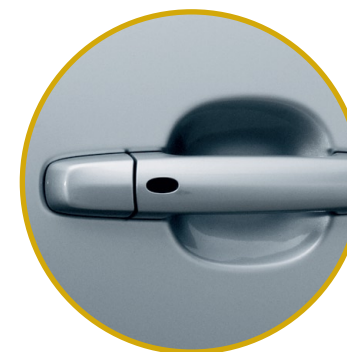
THE KEY IS SO PASSÉ, NOW JUST YOUR PRESENCE (WITH THE SMARTPASS MODULE IN TOW) GIVES THE OPEN SESAME.



Thanks to sensors hidden within the Grand Vitara, the **SmartPass Keyless Start and Entry system** detects the SmartPass module you're carrying and **clears you for entry with a touch of the button on the door handle**. Once inside, still no key required. Just turn the ignition and you're off.



No more fumbling around. You're granted immediate access to your Grand Vitara while your **SmartPass module stays tucked in your pocket or purse**.



By simply pushing the system **button on the door handle** you can **lock and unlock** your Grand Vitara without ever touching the SmartPass module.

# SMART



**GRAND VITARA LIMITED**

Shown in Quicksilver Metallic



100,000-MILE/7-YEAR

POWERTRAIN

LIMITED WARRANTY

FULLY TRANSFERABLE

A M E R I C A ' S

# 1 W A R R A N T Y

NO DEDUCTIBLE

24-HOUR ROADSIDE

ASSISTANCE

See [suzukiauto.com](http://suzukiauto.com) or your local Dealer for more information on warranty highlights or the New Vehicle Warranty Information booklet for full warranty disclosure.

4WD

SAFETY

NAVIGATION

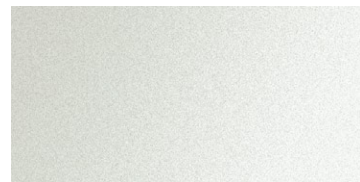
FEATURES

SPECS

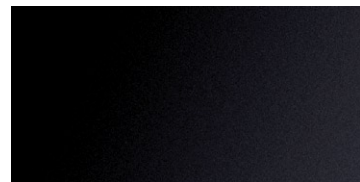
# GRAND VITARA

# SPECIFICATIONS

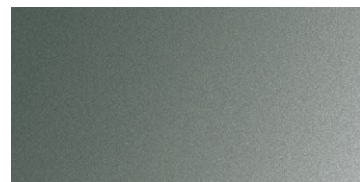
## COLORS



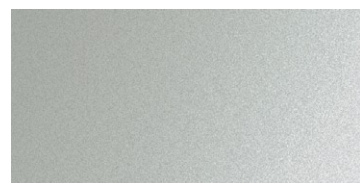
White Water Pearl



Black Pearl



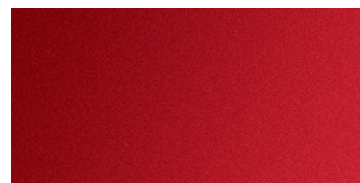
Slate Gray Metallic



Quicksilver Metallic



Deep Sea Blue Metallic



Volcano Red Metallic



## GRAND VITARA SPECIFICATIONS AND FEATURES

### ENGINE AND DRIVETRAIN

|  |    |    |    |    |    |
|--|----|----|----|----|----|
| 2.4-liter DOHC 4-cylinder engine, 166-hp @ 6,000 RPM and 162 lb-ft @ 4,000 RPM | S  | S  | S  | S  | S  |
| Rear-Wheel Drive (RWD)   | S  | S  | —  | S  | —  |
| Single-Mode 4WD  | —  | —  | S  | —  | —  |
| 4-Mode 4WD with 2-speed transfer case  | —  | —  | —  | —  | S  |
| Transmission   | MT | AT | AT | AT | AT |
| Flat-tow capability  | S  | —  | —  | —  | S  |

### WHEELS AND CHASSIS

|   |      |      |      |      |      |
|---|------|------|------|------|------|
| Steel wheels  | 16"  | 16"  | 16"  | —    | —    |
| Alloy wheels  | —    | —    | 0    | 18"  | 18"  |
| Spare tire cover  | Full | Full | Full | Full | Full |
| Multilink rear suspension and MacPherson strut front suspension | S    | S    | S    | S    | S    |

### EXTERIOR

|   |   |   |   |   |   |
|---|---|---|---|---|---|
| Automatic control projector beam headlamps  | S | S | S | S | S |
| Privacy glass                               | — | S | S | S | S |
| Power side mirrors                          | S | S | S | S | S |
| Heated side mirrors                         | — | — | S | S | S |
| Sunroof and roof rack rails                 | — | — | — | S | S |
| Foglamps                                    | — | — | — | S | S |
| Variable intermittent front and rear wipers | S | S | S | S | S |

### INTERIOR

|   |                |   |   |   |   |
|---|----------------|---|---|---|---|
| TRIP 2.0 touchscreen GPS navigation   | S              | S | S | S | S |
| Access to nuLink! services <sup>2</sup> (real-time traffic, low-price gas finder, movie listings, etc.) | —              | S | S | S | S |
| Bluetooth <sup>®3</sup> hands-free calling  | —              | 0 | 0 | 0 | 0 |
| Cruise control  | —              | S | S | S | S |
| Automatic climate control with pollen filter  | S              | S | S | S | S |
| Steering wheel audio and cruise control switches  | S <sup>4</sup> | S | S | S | S |
| Power door locks and windows with driver's auto down  | S              | S | S | S | S |
| Info display (MPG, average speed, outside temperature, range)   | S              | S | S | S | S |
| Height-adjustable driver's seat   | S              | S | S | S | S |
| Leather-wrapped steering wheel  | —              | — | — | S | S |
| Tilt-adjustable steering wheel  | S              | S | S | S | S |
| Leather-appointed seats, heated in front  | —              | — | — | S | S |
| Interior woodgrain trim — color coordinated   | —              | — | — | S | S |
| Remote keyless entry system with panic alarm  | S              | S | S | S | S |
| SmartPass <sup>®</sup> Keyless Start and Entry system   | —              | — | — | S | S |
| 4-speaker AM/FM/CD/AUX with MP3 4-speaker audio   | S              | S | S | — | — |
| 7-speaker AM/FM/CD/AUX with MP3 audio with subwoofer and speed-sensing volume control                   | —              | — | — | S | S |
| Sun visors with vanity mirrors and extensions   | S              | S | S | S | S |
| Cup holders (2 front, 2 rear) and front door bottle holders   | S              | S | S | S | S |
| Front- and rear-door storage pockets  | S              | S | S | S | S |
| Dual power outlets  | S              | S | S | S | S |
| Front console storage and armrest   | S              | S | S | S | S |

BASE 4X2 PREMIUM 4X2 PREMIUM FULL-TIME 4X4 LIMITED 4X2 LIMITED 4-MODE 4X4

● Beige Fabric  
Base and Premium

■ Beige Leather/Walnut  
Woodgrain  
Limited

● Black Fabric  
Base and Premium

■ Black Leather/Black  
Woodgrain  
Limited

## GRAND VITARA SPECIFICATIONS AND FEATURES

### CARGO

|  | BASE<br>4X2 | PREMIUM<br>4X2 | PREMIUM<br>FULL-TIME<br>4X4 | LIMITED<br>4X2 | LIMITED<br>4-MODE<br>4X4 |
|--|-------------|----------------|-----------------------------|----------------|--------------------------|
| 60/40 split-reclining and folding rear seats                   | S           | S              | S                           | S              | S                        |
| Side and rear gate storage compartments                        | S           | S              | S                           | S              | S                        |
| Cargo convenience hooks (4) and underfloor storage compartment | S           | S              | S                           | S              | S                        |
| Cargo light and 12V power outlet                               | S           | S              | S                           | S              | S                        |

### SAFETY FEATURES

|  | BASE<br>4X2 | PREMIUM<br>4X2 | PREMIUM<br>FULL-TIME<br>4X4 | LIMITED<br>4X2 | LIMITED<br>4-MODE<br>4X4 |
|--|-------------|----------------|-----------------------------|----------------|--------------------------|
| Electronic Stability Program   | S           | S              | S                           | S              | S                        |
| Bosch <sup>®5</sup> 4-wheel disc Anti-lock Braking System (ABS) with Electronic Brake-Force Distribution (EBD) | S           | S              | S                           | S              | S                        |
| Brake assist   | S           | S              | S                           | S              | S                        |
| Advanced dual-stage front airbags — Supplemental Restraint System (SRS)  | S           | S              | S                           | S              | S                        |
| Front-seat-mounted side-impact airbags   | S           | S              | S                           | S              | S                        |
| Side-curtain airbags (front and rear)  | S           | S              | S                           | S              | S                        |
| 3-point front and rear seat belts with pretensioners   | S           | S              | S                           | S              | S                        |
| Child seat tethers (3) and ISOFIX child seat restraint anchors (2)   | S           | S              | S                           | S              | S                        |
| Side-impact door beams   | S           | S              | S                           | S              | S                        |
| Tire Pressure Monitoring System (TPMS)   | S           | S              | S                           | S              | S                        |

### INTERIOR DIMENSIONS

|                                | BASE/PREMIUM | LIMITED   |
|--------------------------------|--------------|-----------|
| Head room, front/rear (in)     | 40.1/38.2    | 38.3/38.2 |
| Leg room, front/rear (in)      | 41.3/37.2    | 41.3/37.2 |
| Shoulder room, front/rear (in) | 56.4/54.9    | 56.4/54.9 |
| Hip room, front/rear (in)      | 55.2/44.0    | 55.2/44.0 |

### EXTERIOR DIMENSIONS

|                                     | BASE/PREMIUM | LIMITED |
|-------------------------------------|--------------|---------|
| Wheelbase (in)                      | 103.9        | 103.9   |
| Overall length with spare tire (in) | 177.2        | 177.2   |
| Overall width (in)                  | 71.3         | 71.3    |
| Overall height (in)                 | 66.3         | 66.7    |

### CAPACITIES

|   | RWD       | 4WD       |
|---|-----------|-----------|
| Seating (passengers)                          | 5         | 5         |
| Interior volume (cu ft)                       | 111.1     | 108.6     |
| Cargo volume (SAE), rear seat up/down (cu ft) | 28.4/70.8 | 26.6/66.3 |
| Tow rating (lb)                               | 3,000     | 3,000     |
| Fuel (gal)                                    | 17.4      | 17.4      |

### EPA ESTIMATED FUEL ECONOMY

|   | RWD   | 4WD   |
|---|-------|-------|
| Manual 4-cylinder city/highway (mpg)    | 19/26 | —     |
| Automatic 4-cylinder city/highway (mpg) | 19/25 | 19/23 |

S = Standard O = Optional — = Not Available

### GRAND VITARA LIMITED MODEL FEATURES

- 18-inch alloy wheels • Wood interior trim appliqué • Leather-appointed interior • Heated front seats • Power glass sunroof with tilt feature and 1-touch control
- Roof rack rails • Front foglamps • SmartPass Keyless Start and Entry • Premium AM/FM/CD/AUX/MP3 7 speaker audio system • Leather-wrapped steering wheel • 4-Mode 4WD in place of Single-Mode on 4x4 models

<sup>1</sup>Electronic Stability Program, which should remain on when driving except when freeing the vehicle from mud or snow, cannot be relied upon to prevent accidents due to abrupt steering, carelessness or dangerous driving techniques. Always drive safely. <sup>2</sup>Free 1-year Garmin nuLink! services included while offer lasts. Continue to receive nuLink! services after the 1-year period ends for \$60 per year. Some services only available in select cities where coverage exists. Coverage and pricing based on information available at time of print and subject to change without notice. Garmin nuLink! is a registered trademark. <sup>3</sup>Bluetooth<sup>®</sup> is a registered trademark of Bluetooth<sup>®</sup> SIG, Inc. <sup>4</sup>Audio only. <sup>5</sup>Bosch<sup>®</sup> is a registered trademark of The Robert Bosch LLC. <sup>6</sup>iPod<sup>®</sup> is a registered trademark of Apple, Inc. <sup>7</sup>Required XM<sup>®</sup> tuner and subscription sold separately. All fees and programming subject to change. Subscriptions subject to customer agreement available at xmradio.com. XM<sup>®</sup> service only available in the 48 contiguous United States. XM<sup>®</sup> is a registered trademark of XM<sup>®</sup> Satellite Radio, Inc. <sup>8</sup>Based on IHS Global Insight data for Japan sales. <sup>9</sup>Based on ALG data as of 7/29/10. <sup>10</sup>© 2010 AutoPacific, Inc. Vehicle Satisfaction Award. Nissan Rogue<sup>®</sup>, Toyota RAV4<sup>®</sup>, Honda CR-V<sup>®</sup>, Jeep Patriot<sup>®</sup>, Lexus RX 350<sup>®</sup>, BMW X3<sup>®</sup>, Mercedes GLK<sup>®</sup> Porsche<sup>®</sup>, Volvo<sup>®</sup>, and Mercedes-Benz<sup>®</sup> are registered trademarks. Tire Pressure Monitoring System (TPMS) is not a substitute for regular tire pressure inspections. Tire pressures should be checked at least monthly using a tire pressure gauge. Maintaining the recommended tire pressure can help avoid performance problems, tire damage and premature wear. See the Owner's Manual for additional details. All competitor specifications are pulled from manufacturers' web sites as of 7/16/10. Color options may vary by trim. Specifications and equipment are based on information available at time of print and subject to change without notice. For more information, contact your local Suzuki Dealer or visit suzukiauto.com.

## GRAND VITARA ACCESSORIES



iPod<sup>®6</sup> Interface



Side Steps



XM<sup>®7</sup> Satellite Radio



Rear Spoiler



Trailer Hitch



Removable Roof Rack System with Lockable Bike Module

SUZUKI FAST FACTS:

MAKER OF THE NUMBER-1-SELLING CAR IN JAPAN SIX YEARS IN A ROW<sup>8</sup>.

SECOND LARGEST CAR MANUFACTURER IN JAPAN<sup>8</sup>.

HAS BETTER RESALE VALUE THAN PORSCHE<sup>®</sup>, VOLVO<sup>®</sup> AND MERCEDES-BENZ<sup>®9</sup>.

MAKER OF KIZASHI, HIGHEST SATISFACTION OF ANY 2010 CAR.

AUTOPACIFIC 2010 VEHICLE SATISFACTION AWARD<sup>10</sup>.



KIZASHI



SX4  
CROSSOVER



SX4  
SPORTBACK



SX4  
SPORT



GRAND  
VITARA



EQUATOR



SUZUKIAUTO.COM