



04 RAV4



# 04 RAV4

RAV4 shown in Titanium Metallic with available L PACKAGE, 16" aluminum alloy wheels, roof rack and optional equipment

YOU DON'T SPEND YOUR FRIDAY NIGHTS JUST ANYWHERE.  
IT HAS TO BE AT LEAST AN HOUR'S DRIVE AWAY.

## 04 MODEL GRADES

### Sport Package

- Unique hood scoop and sport seat fabric
- Tubular-style roof rack with polished stainless steel finish
- RAV4 S badging
- Color-keyed door handles and power heated outside mirrors
- Gray-painted overfenders
- Available anti-theft engine immobilizer

### L Package

- Integrated fog lamps
- Color-keyed door handles, power heated outside mirrors, front and rear bumpers, body side moldings and full hard-shell outside spare tire cover
- Leather-wrapped steering wheel and shift lever
- Privacy glass
- Tonneau cover
- RAV4 L badging
- Available leather-trimmed seats
- Available power tilt/slide moonroof with sunshade
- Available color-keyed rear spoiler



MODEL GRADE FEATURES

EXTERIOR

	RAV4
Gray-painted bumpers and body side moldings <sup>1</sup>	S
Color-keyed back door handle	S
Aerodynamic multi-reflector halogen headlamps	S
16" styled steel wheels with P215/70R16 tires	S
16" 5-spoke aluminum alloy wheels with P215/70R16 tires	O
16" 5-spoke aluminum alloy wheels with P235/60R16 tires and color-keyed fender flares (4WD models only; requires L Package)	O
16" 5-spoke aluminum alloy wheels with P235/60R16 tires and gray-painted fender flares (4WD models only) <sup>1</sup>	O
16" 5-spoke aluminum alloy wheels with P235/60R16 tires (4WD models only; requires Sport Package)	O
Washer-linked variable intermittent windshield wipers	S
High Solar Energy-Absorbing (HSEA) glass	S

RAV4

Dual power outside mirrors	S
Dual power color-keyed heated outside mirrors <sup>2</sup>	O
Rear privacy glass	O
Rear window defogger	S
Intermittent rear window wiper	S
Roof rack	O
Full-size spare tire with combination hard/soft full cover	S
Color-keyed rear spoiler (requires Sport or L Package)	O
Mudguards	O
Wide mudguards (requires 5-spoke aluminum alloy wheels with P235/60R16 tires and fender flares or Sport Package)	O

RAV4

INTERIOR

	RAV4
Tilt steering wheel	S
Cruise control	S
Deluxe 3-in-1 AM/FM Cassette/CD with six speakers	S
JBL 3-in-1 AM/FM Cassette/CD with eight speakers in six locations (requires Sport or L Package)	O
JBL 3-in-1 AM/FM Cassette/6-disc in-dash CD changer with eight speakers in six locations (requires Sport or L Package)	O
Digital quartz clock	S
Dual sun visors with vanity mirrors and sliding extensions	S
Dual sliding sun visors with illuminated vanity mirrors (requires front seat-mounted side and front and rear side curtain airbags <sup>3</sup> )	O
Overhead console with garage door opener storage	S
Front maplight	S
Auto-dimming electrochromic rearview mirror (requires Sport or L Package)	O
HomeLink <sup>4</sup> universal transceiver (requires Sport or L Package)	O
Battery-saver feature	S
Illuminated ignition key ring	S
Defroster-linked CFC-free air conditioning with air filtration	S
Cruise control	S
Power windows and door locks	S
Fabric-trimmed doors with integrated speakers and map pockets	S

RAV4

Fabric-trimmed multi-adjustable front seats with driver's seat height adjustment and seatback pockets	S
Fabric-trimmed 50/50 split rear bench seat with slide/tumble/recline/remove functions	S
Leather-trimmed seats (requires L Package)	O
Heated front seats with adjustable temperature control (requires L Package and leather-trimmed seats)	O
Multi-function center console with adjustable front and rear dual cup holders, 12V auxiliary power outlet, storage pocket and covered armrest storage compartment	S
Urethane steering wheel with audio controls	S
Leather-wrapped steering wheel with audio control and shift lever (requires Sport Package, standard in L Package)	O
Orange-illuminated analog instrument cluster with white speedometer, tachometer and fuel gauge meters; LCD odometer with twin tripmeters; and seatbelt disconnect, airbag, door-ajar, battery, oil pressure, brake, VSC, TRAC, ABS, low tire pressure, check engine, scheduled maintenance indicator and low-fuel level warning lights	S
Power tilt/slide moonroof with sunshade	O
Remote hood and fuel-filler door releases	S
Remote keyless entry system	O
Cargo area 12V auxiliary power outlet	S
Six cargo area grocery bag hooks	S
Tonneau cover	O

RAV4

S = Standard O = Optional

<sup>1</sup>Titanium Metallic-painted on Super White and Savannah Metallic.

<sup>2</sup>Included in Sport and L Packages.

<sup>3</sup>The Toyota driver, front passenger, front seat-mounted side airbags and side curtain airbags are Supplemental Restraint Systems (SRS). The driver and front passenger airbags are designed to deploy in severe (usually frontal) collisions where the magnitude and duration of the forward deceleration of the vehicle exceeds the design threshold level. The side airbags and side curtain airbags are designed to inflate in severe side-impact collisions. In all other accidents, the airbags will not inflate. To decrease the risk of injury from a deploying airbag, always wear seatbelts, sit upright in the middle of the seat as far back as possible from the airbag modules and do not lean against the door. Do not put objects in front of an airbag or around the seatback. Do not use rearward-facing child seats in any front passenger seat. The force of a deploying SRS airbag may cause serious injury or death. Please see your Owner's Manual for further instructions.

<sup>4</sup>HomeLink<sup>®</sup> is a registered trademark of Johnson Controls, Inc.

RAV4<sup>1</sup>



Standard 16" 5-spoke styled steel wheel  
Available 16" 5-spoke aluminum alloy wheel<sup>2</sup>  
Available unique 16" 5-spoke aluminum alloy wheel<sup>3</sup>

SPORT PACKAGE<sup>1</sup>



Standard 16" 5-spoke styled steel wheel  
Available 16" 5-spoke aluminum alloy wheel<sup>2</sup>  
Available unique 16" 5-spoke aluminum alloy wheel<sup>3</sup>

L PACKAGE<sup>1</sup>



Standard 16" 5-spoke aluminum alloy wheel<sup>2</sup>  
Available unique 16" 5-spoke aluminum alloy wheel<sup>3</sup>

<sup>2</sup>Required with L Package.

<sup>3</sup>Available on 4-wheel-drive models.



## AVAILABLE PACKAGES AND OPTIONS

### PACKAGES

Sport Package — includes unique sport seat fabric, hood scoop, tubular-style roof rack with polished stainless steel finish, gray-painted fender flares, RAV4 S badging, color-keyed door handles and power heated outside mirrors

L Package<sup>8</sup> — includes color-keyed door handles, power heated outside mirrors, front and rear bumpers, body side moldings and full hard-shell outside spare tire cover; RAV4 L badging; leather-wrapped steering wheel with audio controls and leather-wrapped shift lever; integrated fog lamps; rear privacy glass; and tonneau cover

### OPTIONS

- Front seat-mounted side airbags and front and rear side curtain airbags<sup>3</sup>
- Heated front seats with adjustable temperature control (requires L Package and leather-trimmed seats)
- JBL 3-in-1 AM/FM Cassette/CD with eight speakers in six locations (requires Sport or L Package)
- JBL 3-in-1 AM/FM Cassette/6-disc in-dash CD changer and eight speakers in six locations (requires Sport or L Package)
- 16" 5-spoke aluminum alloy wheels with P215/70R16 tires
- 16" 5-spoke aluminum alloy wheels with P235/60R16 tires and color-keyed fender flares (4WD models only; requires L Package)
- 16" 5-spoke aluminum alloy wheels with P235/60R16 tires and gray-painted fender flares (4WD models only)<sup>1</sup>
- 16" 5-spoke aluminum alloy wheels with P235/60R16 tires (4WD models only; requires Sport Package)
- Power tilt/slide moonroof with sunshade
- Anti-theft engine immobilizer and remote keyless entry
- Remote keyless entry
- Auto-dimming electrochromic rearview mirror (requires Sport or L Package)
- Leather-trimmed seats (requires L Package)
- Leather-wrapped steering wheel and shift lever (requires Sport Package)
- Daytime Running Lights (DRL)
- Rear privacy glass
- Roof rack
- Color-keyed rear spoiler (requires Sport or L Package)
- Mudguards
- Wide mudguards (requires 16" 5-spoke aluminum alloy wheels with P235/60R16 tires and fender flares or Sport Package)
- Tonneau cover
- HomeLink<sup>4</sup> universal transceiver (requires Sport or L Package)

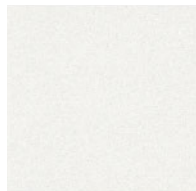
<sup>1</sup>Titanium Metallic-painted on Super White and Savannah Metallic.

<sup>3</sup>The Toyota driver, front passenger, front seat-mounted side airbags and side curtain airbags are Supplemental Restraint Systems (SRS). The driver and front passenger airbags are designed to deploy in severe (usually frontal) collisions where the magnitude and duration of the forward deceleration of the vehicle exceeds the design threshold level. The side airbags and side curtain airbags are designed to inflate in severe side-impact collisions. In all other accidents, the airbags will not inflate. To decrease the risk of injury from a deploying airbag, always wear seatbelts, sit upright in the middle of the seat as far back as possible from the airbag modules and do not lean against the door. Do not put objects in front of an airbag or around the seatback. Do not use rearward-facing child seats in any front passenger seat. The force of a deploying SRS airbag may cause serious injury or death. Please see your Owner's Manual for further instructions.

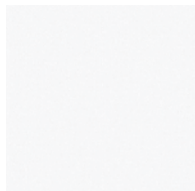
<sup>4</sup>HomeLink<sup>®</sup> is a registered trademark of Johnson Controls, Inc.

<sup>8</sup>Requires either 16" 5-spoke aluminum alloy wheels with P215/70R16 tires or 16" 5-spoke aluminum alloy wheels with P235/60R16 tires and color-keyed fender flares (4WD models only).

### COLORS



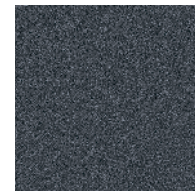
Frosted White Pearl<sup>5</sup> with Dark Charcoal or Taupe interior



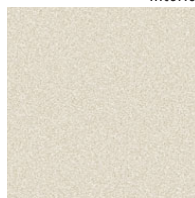
Super White<sup>6,7</sup> with Dark Charcoal or Taupe interior



Titanium Metallic with Dark Charcoal interior



Flint Mica<sup>8</sup> with Dark Charcoal interior



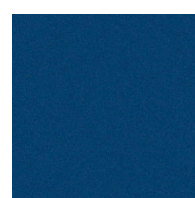
Savannah Metallic<sup>6,7</sup> with Taupe interior



Salsa Red Pearl<sup>6</sup> with Dark Charcoal or Taupe<sup>7</sup> interior



Everglade Metallic<sup>7</sup> with Dark Charcoal or Taupe interior



Spectra Blue Mica with Dark Charcoal or Taupe<sup>7</sup> interior



Black with Dark Charcoal or Taupe<sup>7</sup> interior

<sup>2</sup>Required with L Package.

<sup>3</sup>Available on 4-wheel-drive models.

<sup>4</sup>Requires L Package.

<sup>5</sup>Available with L Package only.

<sup>6</sup>Not available with L Package.

<sup>7</sup>Not available with Sport Package.

<sup>8</sup>Available with Sport Package only.

Toyota RAV4s are designed to meet most off-road driving requirements. Abusive use may result in bodily harm or damage. Toyota encourages responsible operation to protect you, your vehicle and the environment.

Some vehicles are shown with available equipment. Seatbelts should be worn at all times. Please do not allow passengers to ride in the cargo area. Towing hitch receivers/ball mount kits are not intended to provide crash protection.

For details on vehicle specifications, standard features and available equipment in your area, contact your Toyota dealer. A vehicle with particular equipment may not be available at the dealership. Ask your Toyota dealer to help locate a specifically equipped vehicle.

All information presented herein is based on data available at the time of printing, is subject to change without notice and pertains specifically to mainland U.S.A. vehicles only (may differ in the state of Hawaii, Puerto Rico, the U.S. Virgin Islands and in other regions).



## SPECIFICATIONS

	2WD	4WD
<b>Mechanical/Performance</b>		
Engine	2.4-liter DOHC 16-valve EFI 4-cylinder with Variable Valve Timing with intelligence (VVT-i)	
161 hp @ 5,700 rpm		
165 lb.-ft. @ 4,000 rpm		
Ignition	Electronic, with Toyota Direct Ignition (TDI)	
Transmission		
5-speed manual	Standard	Standard
4-speed electronically controlled automatic with intelligence (ECT-i)	Available	Available
Body construction	Unitized body	
Drivetrain	Front engine, front-wheel drive	Full-time 4-wheel drive
Suspension	Independent MacPherson strut front suspension with stabilizer bar and hydraulic shock absorbers; double-wishbone coil-spring rear suspension with stabilizer bar and hydraulic shock absorbers	
Steering	Power-assisted rack-and-pinion	
Turning circle diameter, curb to curb (ft.)	35.4	
Brakes	Power-assisted ventilated front disc and solid rear disc	
4-wheel Anti-lock Brake System (ABS)	Includes Electronic Brake-force Distribution (EBD) and Brake Assist <sup>1</sup>	
<b>Exterior Dimensions (IN.)</b>		
Overall height, unloaded	65.7	66.1 (65.7 with P235/60R16 tires)
Overall width	68.3 (70.3 with Sport Package)	68.3 (70.3 with P235/60R16 tires)
Overall length	166.6 (167.5 with L Package)	166.6 (167.5 with L Package)
Wheelbase	98.0	98.0
Track (front/rear)	59.3/59.1	59.3/58.9 (60.0/59.8 with P235/60R16 tires)
<b>Interior Dimensions front/rear (IN.)</b>		
Head room	41.3/38.3	41.3/38.3
with moonroof	39.6/38.3	39.6/38.3
Shoulder room	54.1/53.7	54.1/53.7
Hip room	53.4/46.5	53.4/46.5
Leg room	42.4/32.6	42.4/32.6
Seating capacity	5	5
<b>Off-Highway</b>		
Approach/departure angle (degrees)	27/28	28/29 (27/28 with P235/60R16 tires)
Minimum running ground clearance (in.)	6.3	6.7 (6.3 with P235/60R16 tires)
Viscous coupling type center differential	NA	Standard
<b>Weights and Capacities</b>		
Curb weight, manual/automatic (lbs.)	2,897/2,965	3,119/3,186
Gross Vehicle Weight Rating — GVWR (lbs.)	4,041	4,087
Payload <sup>2</sup> — manual/automatic (lbs.)	1,144/1,076	968/901
Towing capacity <sup>3</sup> (lbs.)	1,500	1,500
Cargo volume, rear seats in/out (cu. ft.) <sup>4</sup>	29.2/68.3	29.2/68.3
Fuel tank (gal.)	14.8	14.8
<b>Tires</b>		
Size	P215/70R16	P215/70R16
Type	All-Season steel-belted radial blackwalls	All-Season steel-belted radial blackwalls
Spare	Full-size	Full-size
<b>Mileage Estimates (MPG CITY/HIGHWAY)<sup>5</sup></b>		
Manual	24/30	21/26
Automatic	24/28	22/27

<sup>1</sup>See Available Packages and Options section footnote 5 for more information on Toyota's Brake Assist.

<sup>2</sup>Includes the weight of occupants, available equipment and cargo, limited by weight distribution.

<sup>3</sup>Before towing, confirm your vehicle and trailer are compatible, hooked up properly and you have all necessary additional equipment. Do not exceed any Weight Ratings and review all instructions and cautions from your trailer hitch manufacturer and Toyota

vehicle Owner's Manual. Note that the maximum amount you can tow depends on the total weight of any cargo, occupants and available equipment in the vehicle.

<sup>4</sup>Cargo and load capacity limited by weight and distribution.

<sup>5</sup>2004 preliminary mileage estimates determined by Toyota. EPA mileage estimates not available at time of printing. Actual mileage may vary.

1-800-GO-TOYOTA

Have you logged 100,000, 200,000 or more miles on your Toyota with the original engine, transmission and drivetrain? If you have, give us a call at 1-800-GO-TOYOTA and tell us your story. [toyota.com](http://toyota.com)

©2002 Toyota Motor Sales, U.S.A., Inc.  
PT3-017 (8/02) 00617-03RAV