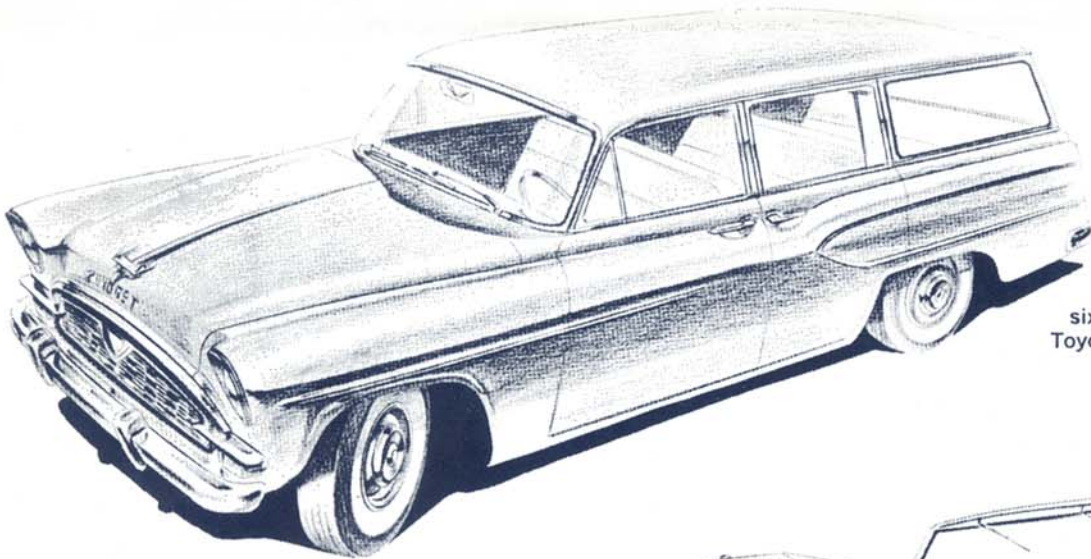


The superb quality 33 M.P.G.
Six passenger, 4 door
Toyopet Custom Crown

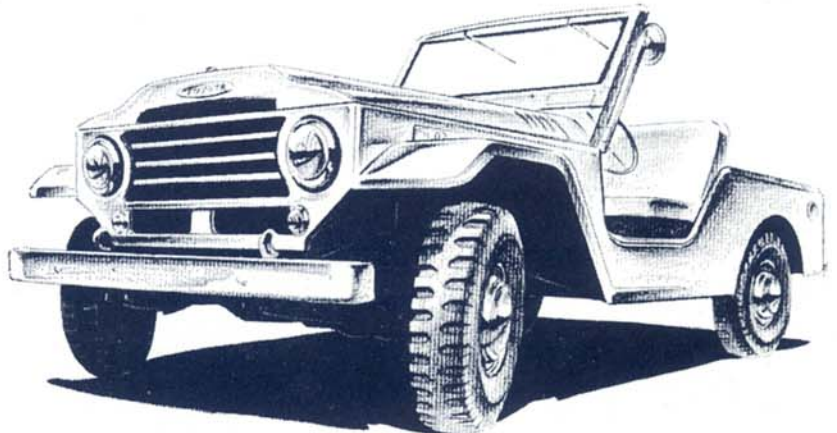


PRESENTING THE WORLD'S 3 FINEST AUTOMOTIVE VALUES



The hand crafted
six passenger, 4 door
Toyopet Station Wagon

 **TOYOPET**
for 1959



The world famous
Toyota Land Cruiser 4 wheel
drive utility vehicle

Toyota Motor Distributors, Inc.

WATCH FOR THESE NEW AUTOMOBILES

Coming to Your Local Dealer's Showroom Soon

TOYOTA SPECIFICATIONS

Toyopet Crown Custom Sedan — Model No. RS 22L

Overall Length	171.9"	Voltage of Battery	12	Engine:
Overall Width	66.8"	Top Speed	80 MPH	No. of Cylinders
Height	60.2"	Fuel Consumption	33 MPG	Type of Valves
Weight	2630 lbs.	Forward Speeds	3	Bore & Stroke
Wheelbase	99.6"	Tread, Front	52.2"	Displacement
Turning Circle	36'	Tread, Rear	53.9"	Compression Ratio
Tire Size	6.40 x 13			Max. Brake Horsepower
				Torque: Lbs/Ft. @ RPM

Toyopet Station Wagon — Model No. RS 26V

Overall Length	172.4"	Top Speed	80 MPH	Engine:
Overall Width	66.1"	Fuel Consumption	33 MPG	No. of Cylinders
Height	61.0"	Tread, Front	52.2"	Type of Valves
Weight	2833 lbs.	Tread, Rear	53.9"	Bore & Stroke
Wheelbase	99.6"	Baggage Compartment:		Displacement
Turning Circle	36'	Length	32.6"	Compression Ratio
Tire Size	6.40 x 15—6 ply	Height	39.3"	Max. Brake Horsepower
Voltage of Battery	12	Forward Speeds	3	Torque: Lbs/Ft. @ RPM

Toyota Land Cruiser — Model No. FJ 25

Overall Length	152.7"	Tire Size	6.00 x 16	Engine:
Overall Width	65.55"	Voltage of Battery	12	No. of Cylinders
Height	72.83"	Top Speed	80 MPH	Type of Valves
Weight	3135 lbs.	Forward Speeds	4	Bore & Stroke
Wheelbase	89.96"	Tread, Front	54.72"	Displacement
Turning Circle	34.8'	Tread, Rear	53.15"	Max. Brake Horsepower
				Torque: Lbs/Ft. @ RPM

ALL SPECIFICATIONS ARE SUBJECT TO CHANGE BY MANUFACTURER WITHOUT NOTICE

TOYOTA MOTOR DISTRIBUTORS, INC.
6032 HOLLYWOOD BLVD., HOLLYWOOD 28, CALIF.