



THE ALL-NEW  
**VOLVO XC90**

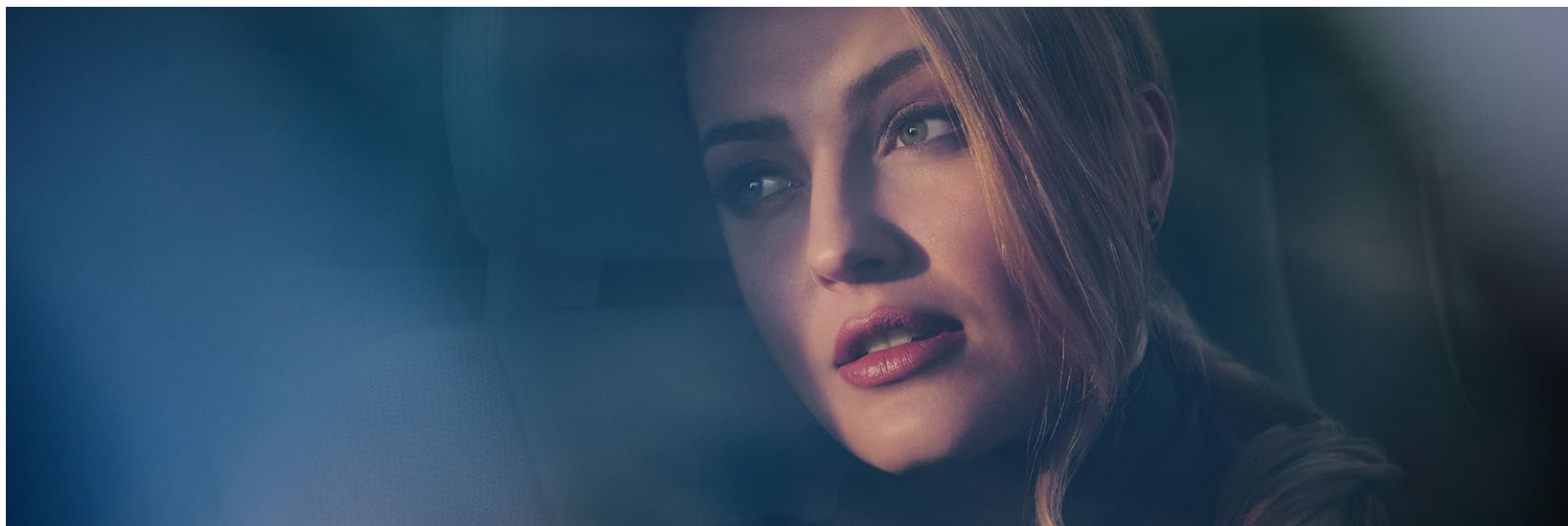
# EXPERIENCE OUR IDEA OF LUXURY.

## *The all-new Volvo XC90.*

We designed the all-new Volvo XC90 for a demanding audience: you. Individuals who demand an SUV that expresses who they are – with a vehicle that turns every drive into a memorable experience.

This contemporary seven-passenger SUV represents our distinctive take on what it means to drive a luxury vehicle in the 21st century. It's the embodiment of contemporary Swedish design and craftsmanship, both inside and out.

Whether you're driving along your favorite country road or negotiating urban highway traffic, our semi-autonomous driving technologies, first-class cabin and attention to detail enhance your driving experience and deliver on the promise of why the all-new XC90 is the new benchmark for luxury SUV's.











# WE'RE VOLVO CARS.

## *We put people first.*

We're Swedish.

Scandinavian designers always start with the person who's going to use an object and ask, "What can we do to make this person's life better, easier or more comfortable?" We've always used this philosophy when we design our cars. Instead of trying to squeeze people around technology, we begin by designing our cars around

you. We ask what you need, and then use our skills to make your life easier, better, safer and more exciting.

In the all-new Volvo XC90, Scandinavian design and technology converge in creating the perfect experience for you and the people you're with.



# ROAD PRESENCE.

*Be impressed, quite simply.*

You know you're looking at truly great design when what appears simple at first glance turns out to be ingenious and stimulating once you discover the thoughts and details that make up the whole. And as with any luxury item – a finely crafted watch, a bespoke jacket, an exclusive handbag – its beauty might be obvious, but its

true value is only revealed when you discover the expertise, the craftsmanship and the passion that went into making it. The all-new Volvo XC90 has these qualities. With a strong sense of presence on the road, the design is also exquisitely subtle. It's about perfect execution, and it's a design that is both contemporary yet timeless.











# GET INSIDE.

## *Everyone travels first class.*

The interior of the all-new Volvo XC90 is truly special. It embodies our designers' vision to create a space that combines a contemporary take on luxury with timeless seclusion. When we designed the interior, we made sure you and your passengers travel in first class, no matter where you sit. The sculptured seats offer 21st-century luxury in look, feel and style while allowing generous rear legroom. And you can sit easy in the knowledge that they've been designed in line with leading ergonomic research. Ten-way power front seats, including power lumbar support, ensure you'll easily find your perfect seating position: you'll never want to get out of your car. If you'd like to enhance their lavish comfort even further, you have

the option of massage and ventilation and power operated seat cushion extensions and side bolsters.

In the second row, the three individual seats are designed for maximum comfort and slide and recline individually. For excellent visibility, there's "theatre seating" – the rear rows are positioned higher up than the seats in front. In true Volvo style, we've also remembered younger passengers – children who've outgrown their child seats can use the integrated booster cushion in the second row. And because light is precious to us in Sweden, we've designed the large panoramic glass moonroof which comes standard in your XC90 and perfectly complements the airy, uncluttered cabin.



Jewel-like touches such as controls with diamond-knurled finish and translucent edges underline our designers' meticulous attention to detail.



Up to seven people ride comfortably in individual ergonomic seats. Each seat in the second and third row can be folded flat into the floor to allow superior versatility with 32 possible seating combinations.



Thanks to the four-zone climate system, passengers in the outer two rear seats can set temperature and fan speed to their individual taste – and the same goes for the driver and the front passenger.

# LUXURY DYNAMICS.

## *Firm control with a velvet touch.*

We tuned the advanced chassis of your Volvo XC90 to deliver a refined, smooth ride as well as precise handling. All to give you a car that is just as comfortable and reassuring to drive on challenging country roads as it is on the highway. Behind the wheel you'll experience true luxury dynamics, leaving you with the confident feeling of control that makes the car easy to position on the road in busy traffic situations and tight parking spaces.

The all-new XC90 also incorporates our very latest electronic support systems that constantly adjust to changing road conditions and driving styles. For example, our hill start assist function and hill descent control make it easier to negotiate steep hills. And for difficult roads and poor weather conditions, all-wheel drive ensures you embark on your journey with confidence.

For an ultra-smooth ride, the XC90 is available with an air suspension system. This includes a very advanced, electronically-controlled damper system. Not only does this give you outstanding ride comfort and handling – you also have the option to choose between different drive modes, which cater to individual driving styles and increase the car's versatility in all road and weather conditions. The air suspension also allows you to lower or higher the car – very convenient to make loading easier or to enhance the car's off-road capacity. And at higher speeds, the car lowers automatically to enhance stability.



Our optional air suspension technology offers you several dynamic chassis modes at the touch of an elegant drive mode selector: COMFORT for maximum comfort, ECO for low fuel consumption, DYNAMIC for optimised aerodynamics and handling and OFF ROAD for increased ground clearance.

READ MORE AT [VOLVOCARS.US](http://VOLVOCARS.US)







*"We took a radically new approach  
on how to make the car as intuitive to interact with as possible."*

## Experience technologies that don't let anything come between you and your driving experience.

We know that luxury SUV drivers love technology but often feel frustrated about how complicated it can be to use. So when developing the all-new XC90, we took a radically new approach on how to make the car as intuitive to interact with as possible.

As a result, the information you need to see straight away – for example actual road signs and navigation arrows – is presented right in front of you in the driver display or, if you have chosen the optional head-up display, hovering conveniently in your field of vision so that you can stay focused on the road and enjoy the drive. Less urgent information – for example, current speed, fuel level and 3D navigation maps – appears in the driver display, while

anything you need to know or do whenever you have time (such as climate and entertainment) has its place on the nine-inch centre display with touch screen.

The central touch screen also allowed us to replace most of the physical buttons and switches with one sleek control panel. From the central touch screen, you conveniently control functions such as climate, navigation, media and phone. Each function is organized in separate tiles that give you an intuitive overview. And when you activate a tile, it expands instantly to give you more detailed information. No flipping through complicated menus, just intuitive control.



**Talk to me.** Further adding to a relaxed driving experience, you can control most of the functions using the buttons integrated in the steering wheel. And because the easiest way to interact with your car is by talking to it, all-new XC90 also features a full natural speech voice control for the most frequently used functions.

**The beauty of information.** Our tablet-sized centre display with touch screen is vertical, which is innovative and practical. We've placed large touch buttons at the bottom of the screen, where they're easy to reach, and information for viewing at the top. This format also makes following routes on maps easier as more of them can be displayed and creates less need for scrolling.

READ MORE AT [VOLVOCARS.US](http://VOLVOCARS.US)



*SENSUS*





*SENSUS*

**Premium Sound by Bowers & Wilkins embodies our quest for per-fection.** For the all-new XC90, we wanted to make the best sound system on four wheels. That's why we've partnered with Bowers & Wilkins to bring you a sound system that will redefine what you thought was possible. The numbers are impressive: an astonishing 1400 Watts from 19 speakers. But our pursuit of the definitive sound system went beyond mere technical facts. Extensive listening and an innovative approach have yielded exceptional results that wattage alone couldn't create. In creating one of the best car audio systems ever, each individual component is designed and acoustically optimised for the all-new Volvo XC90. We've also developed a unique room transformation technology that allows you to recreate the acoustics of a specific room inside your all-new Volvo XC90. The results are simply exceptional, wherever you're seated.

Bowers & Wilkins is a trademark of B&W Group Ltd.



*"Our high-end audio system Premium Sound by Bowers & Wilkins will redefine what you thought was possible."*

## Connect with all your senses.

Volvo Sensus is our way of enabling you to communicate instinctively with your car and to connect with the digital world. Thanks to Sensus Connect, which is standard, you can stream your favourite tunes from your device to your car via Bluetooth®. You can also use Bluetooth® or WiFi tethering to connect your XC90 to the internet via your device. You can then browse the web and access a variety of internet radio, navigation and media apps.

With the Sensus Navigation, you can view your route on the centre display with touch screen. Our smart navigation in-car apps further add to your convenience.

Nothing rounds off a drive in your car better than luxuriating in the rich sound of your favourite piece of music. And our two sound systems – High Performance Sound or the optional high-end audio system Premium Sound by Bowers & Wilkins – turn any drive into a momentous experience.



**Advanced touch control.** The latest touch screen technology with infrared film gives you precise control at the lightest touch at the screen, even when you're wearing gloves. Push, sweep or pinch across the screen – all functions are smoothly operated with intuitive fingertip control. Anti-reflective coating further enhances contrasts yet minimizes reflections and glare to maximize visibility in all light conditions.

**The short way home.** Sensus Navigation makes use of the centre display with touch screen by showing your route in the largest possible format. And with the optional head-up display, you'll be guided by navigation arrows hovering in front of you. As the system is connected, you have access to convenient navigation apps. Best of all, Sensus Navigation has voice control, so all you have to do is say where you want to go.

READ MORE AT [VOLVOCARS.US](http://VOLVOCARS.US)



*INTELLISAFE*

**Light up the dark.** Driving in the dark just became a lot more enjoyable and safer. Our "Hammer of Thor" LED lights combine an impactful look with safety and convenience. They have an especially wide and long light pattern, and featuring our Active High Beam technology you can stay on high beam all the time. You don't have to flick between low and high beam, and when you meet or catch up another vehicle the system shades out only as much of your beam as necessary to avoid dazzling – while you still get the benefit of a brightly lit road.

FIND OUT MORE AT [VOLVOCARS.US](http://VOLVOCARS.US)



*"Our vision is to design cars that should not crash."*

## Intuitive safety by Volvo Cars. For you, and for those around you.

At Volvo Cars, safety is an intrinsic part of our DNA. We've invented some of the world's most pioneering life-saving technologies – such as the three-point safety belt that's been acknowledged one of the most important innovations of mankind.

But we aim higher. Our vision is to design cars that should not crash. In the shorter perspective, the aim is that by 2020 no-one should be killed or seriously injured in a new Volvo.

IntelliSafe is our approach for a more harmonious relationship between cars and people. And the all-new Volvo XC90 is a big step towards this ambition. Day and night, our City Safety collision avoidance technology can help you avoid or mitigate collisions with other cars, pedestrians and cyclists in your path. City Safety also includes Braking in Intersection – another world-first from

Volvo Cars. If you should turn into the path of an oncoming car at an intersection, your XC90 will brake automatically to help mitigate a collision or prevent it altogether. The standard IntelliSafe technologies also include preventive safety features such as Road Sign Information, Lane Departure Warning and Electronic Stability Control. And it goes without saying that you also get Volvo's legendary strength.

If you'd like to build on this, the IntelliSafe Surround option is designed to alert you to hazards all around your car, while the IntelliSafe Assist option assists you for a relaxed drive in the city or on the highway. For example, by helping you to keep a safe distance to the car ahead and avoid lane drifting by gently steering you back to your lane if it's needed.

## INTELLISAFE



City Safety senses if you're about to collide with the car in front and applies the brakes. The system is active at all speeds and can reduce your speed with up to 31 mph / 50 km/h. In many situations, this can help you avoid collisions altogether or help to reduce the severity of a crash. As a world-first, City Safety also brakes if you're about to turn into the path of an oncoming car, again helping you to avoid or mitigate a collision.

City Safety also watches out for pedestrians and cyclists, even at night. This is particularly important as pedestrians and cyclists are much harder to see than cars in low light. Should a pedestrian or bike veer into or cross your path, City Safety brakes to avoid or mitigate a collision.

The optional BLIS system uses radar sensor technology to alert you to vehicles in your blind spot and to vehicles approaching fast from behind in the adjacent lane. There's also Cross Traffic Alert, which watches out for vehicles you can't see – up to 98 ft. / 30 m. away – when you're reversing out of tight parking spaces. At shorter distances it also helps you detect pedestrians and cyclists.





*"You can do whatever you prefer to negotiate slow moving city traffic."*

## Semi-autonomous driving by Volvo.

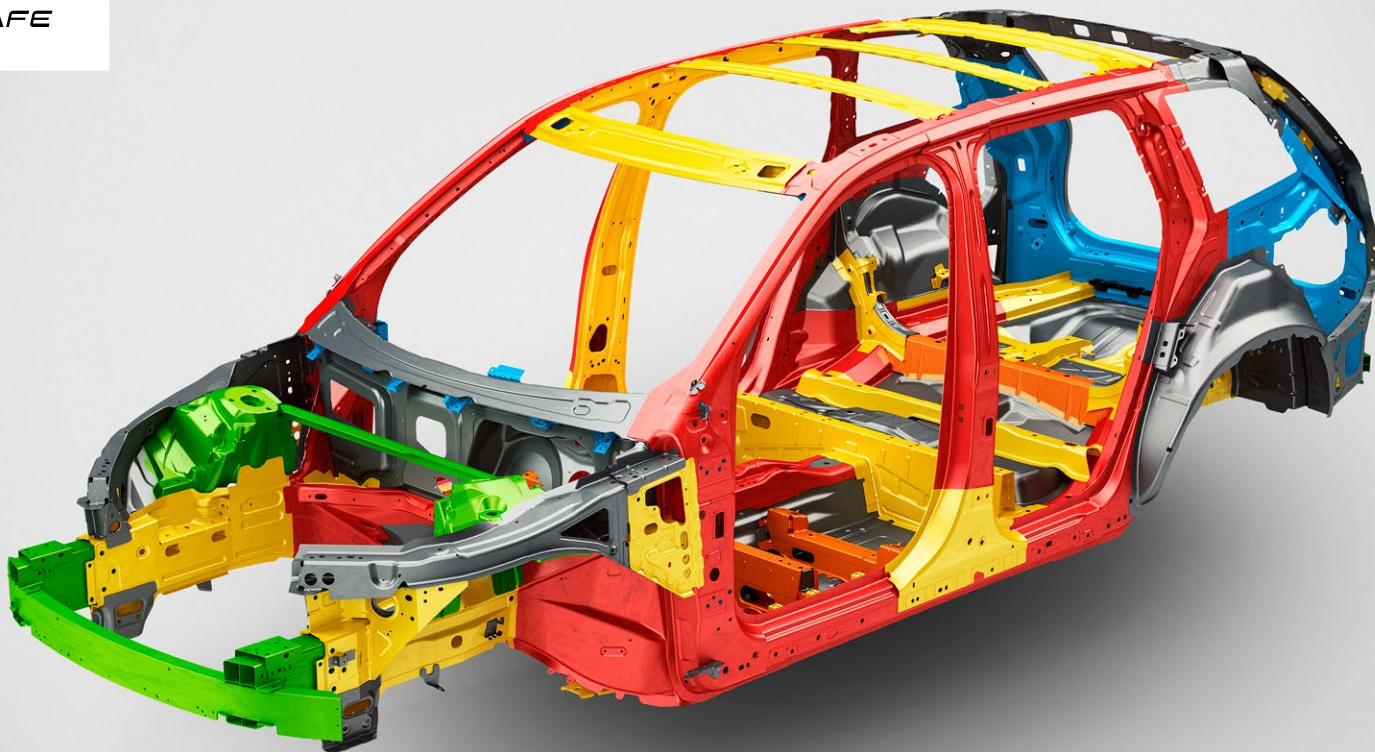
### How to enjoy an amazingly relaxed and convenient drive – even in jammed city traffic.

Already from standstill you can enjoy the benefits of a semi-autonomous driving experience where your XC90 not only keeps the set speed and distance to the vehicle in front of you. The new optional Pilot Assist function actively supports you by automatically adjusting the steering to keep the

car within the lane. All you have to do is keeping your hands on the steering wheel and leave driving to the hands of technology. And you can do whatever you prefer to negotiate slow moving city traffic. Pilot Assist is active from standstill up to speeds of 31 mph.



INTELLISAFE





## Helps protect what's important to you – by design.

As proactive as the active safety technology is, a vital step when creating an extremely safe car is designing protective strength around the passenger compartment. At Volvo Cars, we pioneered the use of ultra-high strength steel in our safety cages. In the all-new XC90, around 40% of the total body weight consists of this extremely tough material. But an intelligent structure needs to dissipate energy as well as resist it. That's why we've engineered the XC90 to include strategically-placed softer segments in different steel qualities, which act as front and rear crumple zones.

Our run-off road protection technology is a safety world-first. When the system senses an imminent run-off road scenario or a collision, it automatically tightens the front safety belts with two levels of force to keep you at a safe position. And to help protect your spine if the car lands hard in the terrain during an accident, we designed the front seat frames and seat cushions to help absorb severe vertical forces. If a collision is avoided, the front safety belts unroll again without needing to be serviced.



We designed the safety technologies of your XC90 to help protect people of different size and age. For example, a child over 3–4 years of age will ride in comfort and safely positioned in our integrated booster cushion on the second row's centre position.

In typical Volvo way, we also want to help protect other motorists. That's why we've developed our lower crash structure – it means the XC90 is compatible with smaller cars' crumple zones. Because if you're big, you also have to be kind.

**We think that everyone should be able to enjoy the cleanest possible environment – even in surroundings with high levels of pollution.** That's why we've created CleanZone: it's our comprehensive approach to a clean interior in your car. As part of CleanZone, we test all our interiors to ensure that none of them emit any odours or harmful gases. We also take care that all materials are hypo-allergenic. Then there's our newly-developed cabin filter that greatly reduces the levels of dust, pollen and particles entering the cabin. On top of this, our CleanZone interior air quality system has an active charcoal multi-filter that protects you and your passengers from harmful vehicle emissions, such as carbon monoxide and nitrous oxides, and diesel particles. The system also opens and closes the air vents automatically. It constantly measures the quality of the air entering the cabin and switches to recirculation mode if it detects harmful gases, opening the vents again when conditions are appropriate.

READ MORE AT **[VOLVOCARS.US](http://VOLVOCARS.US)**







**Park with confidence – wherever you go.** Tight parking areas and narrow city streets can be easily maneuvered with the optional 360° camera. You'll get a bird's-eye, uninterrupted view of the car's surroundings on the center display. Or would you like your car to park for you? Then let the optional Park Assist Pilot do the work, and maneuver you into a vacant space. Not only can this technology parallel park – it can also handle perpendicular parking. Once it detects a suitable gap, it takes over the steering and guides your XC90 into place – all you need to control is the brake and the accelerator. The technology is so precise it can park in spaces you wouldn't even normally consider: when parallel parking, for example, a space just 1.2 times the length of the car is enough. It's like having a valet to park your car for you, everywhere you go.

READ MORE AT **[VOLVOCARS.US](http://VOLVOCARS.US)**



*DRIVE-E*





*“Our all-new T6 engine gives you an exhilarating driving experience with smooth, instant response and reduced environmental impact.”*

## Enjoy the smooth power of instant response.

We designed our new-generation lightweight Drive-E powertrains to give you efficient power and an uncompromising driving experience. In fact, we know they redefine how luxury cars will be powered in the 21st century. Our all-new supercharged & turbocharged four-cylinder T6 engine is the exciting result of this all-embracing approach to efficient power. In the all-new Volvo XC90, it gives you an exhilarating driving experience with smooth, instant response at all revs – just the performance and driving enjoyment you’d expect from a luxury SUV. And thanks to our unrelenting commitment to efficiency, it helps reduce the impact on the environment as well. All this means you get power and superb driveability together with low fuel consumption and less harmful emissions.

To adapt the engine characteristics to your preferences or driving conditions, you can choose between different drive modes for the engine, gearbox and the optional air-suspension – Dynamic, Off road, Eco and Individual mode. Selecting Dynamic mode, you can enjoy a more sporty driving experience with quicker engine and gearbox responses. In Eco mode, the gearbox and engine control systems are calibrated for the lowest possible fuel consumption. And the Stop/Start system also plays its part in lowering fuel consumption.

To complete your driving experience, we’ve mated this 316 hp/ 295 lb/ft. powerplant with our all-new automatic eight-speed Geartronic® transmission, which ensures you get optimum performance and comfort at any speed.

*"Our twin-engine technology delivers an uncompromising driving experience, combining the modern feel of zero emission driving with astonishing performance."*

## Double your power. T8 Twin Engine plug-in hybrid.

Imagine having access to astonishing 400hp AWD performance, as well as a sophisticated pure electric mode at the touch of a button. The XC90 T8 Twin-Engine combines the supercharged & turbocharged Drive-E engine with a powerful electric motor, delivering an exhilarating driving experience while minimizing your impact on the environment. Fully charged the XC90 T8 Twin-Engine provides 25 miles of pure electric driving, covering most everyday driving scenarios, yet without ever having to worry about range, as the 313hp Drive-E engine can be called upon at any time.

Combined the two engines offers tremendous versatility, enabling distinctive drive modes: Pure Electric, Hybrid and Power. So your XC90 can be a silent running pure electric city car, a smart plug-in-hybrid 7 seat SUV and an effortless performance experience – all without ever having to compromise. As a symbol of the pure electric mode, the gear shifter in pure Swedish crystal is hand made for you by Orrefors™.



**Nothing encapsulates our fresh thinking on 21st-century luxury and performance better than our top-of-the-range T8 Twin Engine AWD plug-in hybrid.**

Our twin-engine plug-in hybrid technology delivers an uncompromising driving experience, combining the modern feel of zero emission driving with astonishing performance. In addition to a super- and turbo-charged high performance engine, the XC90 T8 Twin-Engine is equipped with a powerful electric motor which gives a combined output of 400 hp and 0-60 mph in 5.7 sec. The instant and vast torque to the rear wheels gives the XC90 T8 a truly sophisticated and near silent driving experience. The electric motor is powered by high-capacity batteries that pack ample reserves in Pure electric mode – a full battery suffices for the most people's daily commute. The batteries are mounted centrally along the transmission tunnel. It's an intelligent positioning which gives you excellent weight distribution and, as a consequence, outstanding handling.

READ MORE AT [VOLVOCARS.US](http://VOLVOCARS.US)





## The choice is yours.

Choosing your all-new Volvo XC90 was the easy part. Now all you have to do is give it the twist that best matches your personality. The standard trim level Momentum is well-contended and designed to meet your high demands on a luxury SUV. And if you're aiming for top-of-the range luxury, you'll love Inscription with its focus on craftsmanship, elegance and exclusiveness. Finally, the R-Design is all about a more sporty, dynamic expression of your SUV, both inside and out.

### VOLVO XC90 MOMENTUM



- High gloss black grille with glossy chrome frame.
- Color coordinated lower body moldings.
- Lower grilles, black in colored outer grilles with chrome deco strip.
- Roof rails, are in matte, anodized aluminum with Charcoal feet.
- The frame around the side windows is high gloss.
- Endpipes, matte Silver Bright metallic skid plate, dual, integrated endpipes, and 'whiskers' around the rear reflector in body color.
- 19", 10-spoke Turbine, Silver bright, alloy wheels.
- Cross Brushed aluminium inlays.
- Comfort seats with Leather upholstery.



## VOLVO XC90 R-DESIGN



- Horizontal mesh grille in high gloss black paint, silkmetal frame.
- R-Design color coordinated lower body moldings.
- Lower grilles, dark grey painted outer grilles with high gloss black insert.
- Integrated roof rails in high gloss anodized aluminum, flush with the roof
- Exterior mirror caps R-Design which comes with semi matte silver finish.
- The frame around the side windows has a silk metal finish, which perfectly matches the mirror caps.
- Endpipes dark grey skid plate with body colored insert, dual integrated end pipes, 'whiskers' with high gloss black finish.
- 20" 5-spoke, Diamond Cut/Tech matte grey, alloy wheels.
- Metal Mesh aluminum inlays.
- Contour seats with Nubuck textile and Nappa Leather upholstery.



## VOLVO XC90 INSCRIPTION



- Matte silver colored grille with waterfall theme, glossy chrome frame.
- Color coordinated lower body moldings with high gloss chrome strip with Inscription logo.
- Lower grilles, black in colored outer grilles with chrome deco strip.
- Integrated roof rails in high gloss anodized aluminum, flush with the roof.
- The frame around the side windows is high gloss chrome.
- Endpipes matte Silver Bright metallic skid plate, dual integrated endpipes, and 'whiskers' with high gloss chrome finish.
- 20", 10-spoke, Diamond Cut/Tinted silver, alloy wheels.
- Linear Walnut wood inlays.
- Comfort seats with Perforated Nappa Leather upholstery.





VOLVO XC90



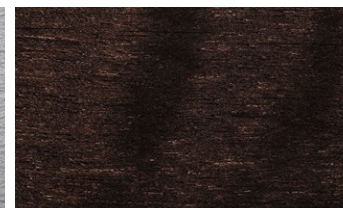
Contour seat



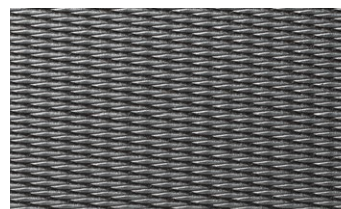
**Comfort seat**



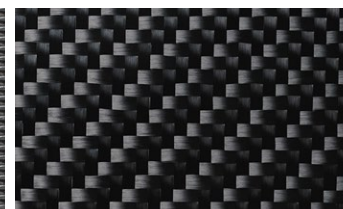
**Cross Brushed Aluminium**  
Momentum



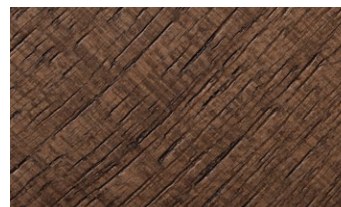
**Dark Flame Birch**  
Optional for Momentum



**Metal Mesh**  
R-Design



**Carbon Fibre**  
Optional for R-Design



**Linear Walnut**  
Inscription





**RA00** | Charcoal Leather in Charcoal interior



**RA20** | Amber Leather in Charcoal interior



**RC00** | Charcoal Perforated Nappa Leather in Charcoal interior



**RC20** | Amber Perforated Nappa Leather in Charcoal interior



**RB01** | Charcoal Nappa Leather in Charcoal interior Contour Seat

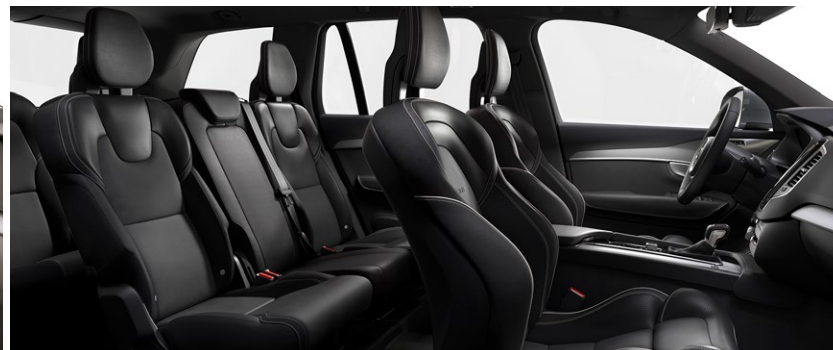


**RB21** | Amber Nappa Leather in Charcoal interior Contour Seat





**WA00** | Blond Leather in Blond interior



**RB0R** | Charcoal Nubuck & Nappa Leather in Charcoal interior



**WC00** | Blond Perforated Nappa Leather in Blond interior



**UB01** | Blond Nappa Leather in Blond/Charcoal interior Contour Seat



**RB0R** | Charcoal Nubuck & Nappa Leather in Charcoal interior

# XC90 T6 AWD

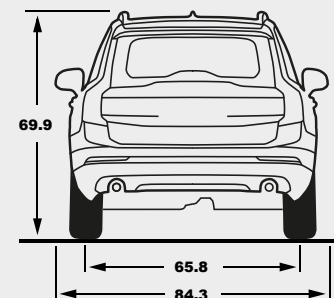
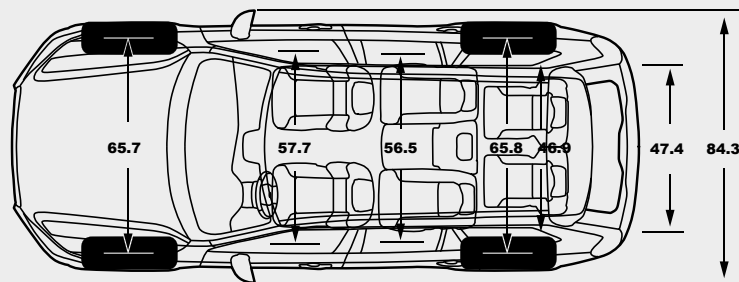
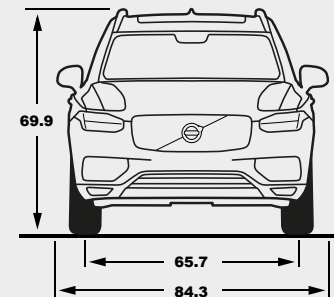
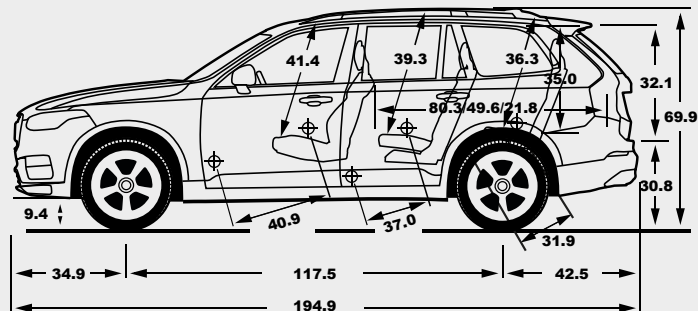
316 hp, 295 lb. ft. torque, Direct-injected Turbo & Supercharged Engine,  
8-speed Geartronic Automatic with Start/Stop & Adaptive Shift

	Momentum	Inscription	R-DESIGN				
<b>Safety</b>				3rd Row seating (7-seats)	●	●	●
Volvo On-Call, includes: Convenience features - Remote Lock/Unlock, Send to Car. Vehicle Tracking - with 6-Month Subscription	●	●	●	Sensus Navigation	●	●	●
Roll Stability Control	●	●	●	Volvo Sensus Connect w/ 9" touchscreen & 6-Mo. Complimentary Subscription	●	●	●
Collision Avoidance by City Safety, includes Pedestrian & Cyclist Detection & Avoidance (Day & Night)	●	●	●	Natural-speech Voice Control	●	●	●
Run-off Road Protection	●	●	●	12.3" Digital Instrument Display	N/A	●	●
Lane Departure Warning	●	●	●	High Performance Audio w/ 10 spks, 330w, 1 USB, & AUX input	●	●	●
Road Sign Information	●	●	●	Sirius™ Satellite Radio w/ 6-Month Subscription	●	●	●
Driver Alert	●	●	●	4-zone Electronic Climate Control	●	●	●
<b>Exterior</b>				CleanZone Air Quality System	●	●	●
Laminated Panoramic Sunroof w/Power Sunshade	●	●	●	Leather Steering Wheel	●	●	●
19" 10-Spoke Turbine Alloy *Mleels in Silver Bright	●	N/A	N/A	Aluminum Inlays	●	N/A	N/A
Adjustable Drive-mode settings	●	●	●	Aluminum tread plates, "Volvo"	●	N/A	N/A
Aluminum Roof Rails	●	N/A	N/A	Auto Dimming Mirror	●	●	●
Dual Integrated Tailpipes	●	●	●	<b>Versatility</b>	●	●	●
LED Fog Lamp with Corner Illumination	●	●	●	Keyless Entry & Drive	●	●	●
Front Grille, High-gloss Black	●	●	●	Rear Park Assist Camera	●	●	●
Tinted \Nindows, Rear & Cargo	●	●	●	Hands free, Power Tailgate	●	●	●
Door Handle Illumination	●	●	●	Rear Park Assist	●	●	●
<b>Interior</b>				Cargo Cover	●	●	●
Leather upholstery (seating surfaces)	●	N/A	●	Cargo Divider, uoover cargo floor	●	●	●
10-way. Power Front seats incl. power lumbar & driver seat memory	●	●	●	Power-folding Rear Head Restraints (outer positions)	●	●	●
Heated front seats	●	●	●	Power Child Safety Locks	●	●	●
				Tempa Spare Wheel. incl Jack Kit	●	●	●
				Aluminum Cargo Scuff Plate	●	●	●

Inscription & R-Design			
LED headlights w/Actiw Bending Lights (ABL), Auto Highbeam (AHB) & Thor's Hammer DRL	N/A	●	●
Headlight High-pressure Cleaning	N/A	●	●
Illuminated Tread Plates	N/A	●	●
High-level Interior Illumination	N/A	●	●
Inscription features			
front Grille, Silver matte	N/A	●	N/A
Lower Door Molding with "Inscription" Logo	N/A	●	N/A
Chrome Accents, Rear Fascia	N/A	●	N/A
"Inscription" Badge, tailgate	N/A	●	N/A
Integrated Aluminum Roof Rails	N/A	●	N/A
20" 10-spoke Tinted Silver Alloy Wheels	N/A	●	N/A
Nappa Leather Upholstery	N/A	●	N/A
Nappa Leather Dashboard & Upper Door Panels	N/A	●	N/A
Ventilated Front Seating	N/A	●	N/A
Power Side Support, front seats	N/A	●	N/A
Power Cushion Extension, front seats	N/A	●	N/A
Linear Walnut Wood Inlays	N/A	●	N/A
Inscription Mats, including cargo area	N/A	●	N/A
Nappa Leather Key Fob, color coordinated	N/A	●	N/A
Rear Sun Curtains, rear side doors	N/A	●	N/A
"Inscription" Start-up sequence (Digital Display)	N/A	●	N/A

R-Design features			
R-Design Lower Front Spoiler	N/A	N/A	●
R-Design Front Grille	N/A	N/A	●
R-Design Pedals	N/A	N/A	●
R-Design Silk-metal Window Trim	N/A	N/A	●
R-Design Dual integrated Tail Pipes	N/A	N/A	●
R-Design Silk-metal Mirror Covers	N/A	N/A	●
R-Design Perforated Leather Gearshift Knob	N/A	N/A	●
R-Design Badge, tailgate	N/A	N/A	●
R-Design 20" 5-spoke alloy wheels in Tech Matte Grey Diamond Cut	N/A	N/A	●
R-Design Nubuck / Nappa Leather Contour Seats	N/A	N/A	●
Power cushion extension, front seats	N/A	N/A	●
Metal Mesh Aluminum Inlays	N/A	N/A	●
Illuminated Tread plates, R-Design logo	N/A	N/A	●
R-Design Perforated Leather Steering Wheel	N/A	N/A	●
Steering Wheel Gear Shift Paddles	N/A	N/A	●
R-Design Nappa Leather Key Fob	N/A	N/A	●
Black Headlining	N/A	N/A	●
R-Design Mats, front/rear	N/A	N/A	●
"R-Design" Start-up sequence (Digital Display)	N/A	N/A	●





#### T6 AWD

Engine type:	2.0 I4 petrol supercharged and turbocharged
Transmission:	Eight-speed Geartronic®
Fuel consumption, mpg, highway/city:	25/20
Max. Power output, hp:	316
Max. torque, lb-ft:	295
Fuel tank, gallon:	18.8
Environmental classification:	ULEV-II

**Please note:** Some of the information in this brochure may be incorrect due to changes in product specifications that may have occurred since printing. Some of the equipment described or shown may now only be available at extra cost. Before ordering, please ask your Volvo dealer for the latest information. The manufacturer reserves the right to make changes at any time and without notice to prices, colours, materials, specifications and models.

# The most carefree way to own a car. Ever.

## LEASING OPTIONS

### FLEXIBLE TERMS

Leasing is available for terms as short as 24 months or up to 48 months. You can drive a new Volvo every few years while within the manufacturer warranty and maintenance plans and without the burden of negotiating trade-in values.

### CHOICE OF MILEAGE PLANS

The standard mileage option allows up to 15,000 miles per year, however, several other mileage plans are available to tailor to your commuting needs. Under the low mileage plan, options are available as low as 10,000 miles per year and we also offer a high mileage plan with options as high as 30,000 miles per year.

### SINGLE PAYMENT LEASE

A Single Payment Lease provides convenience and savings. You make only one payment, one time, freeing you from monthly payments. It permits you to prepay all monthly payments in a single payment at lease signing. This single total lease payment is less than the amount you would pay over the term of a conventional lease.

### MULTIPLE SECURITY DEPOSIT LEASE\*

A Multiple Security Deposit lease allows you to place a lump sum refundable security deposit at lease inception, which reduces your monthly rent charge resulting in substantial savings over the term of the lease. The additional security deposits are refunded to you at the end of the lease term.

### BUSINESS LEASE

Under our Business Lease Option, owners have the flexibility to lease the vehicle as the business.

### GUARANTEED AUTO PROTECTION (GAP) WAIVER

Our GAP Waiver is included in your lease agreement at no additional cost to you. It is provided to give you peace of mind. If your leased Volvo is declared a total loss due to theft, accident, or natural disaster, we will cover the difference between the insurance proceeds and the balance owed to Volvo Car Financial Services less any deductible.

### EXCESS WEAR AND USE PROTECTION PLAN\*

As a part of everyday driving, normal wear and use can be expected. However, when turning in your leased vehicle, you may be responsible for any excess wear and use damage, therefore, Volvo Car Financial Services offers an optional plan to protect you and your car from unexpected occurrences that happen from nature and chance.

## FINANCE OPTIONS

Volvo Car Financial Services (VCFS) offers affordable and competitive financing on new and Volvo Certified Pre-Owned Cars. Our low rates and flexible terms can get you behind the wheel of the Volvo you want to drive with finance terms up to 75 months. Volvo Car Financial Services also offers financing on vehicles purchased under the Overseas Delivery Program.

\* Please contact your local Volvo retailer for detailed information on Volvo Car Financial Services Programs. Security Deposit Program is not available in NY. Excess Wear and Use Protection Plan is optional and not available in AK, GA, KS, NM, NY, TX, UT and VT.

## SPECIAL PROGRAMS

### EXPATRIATE PROGRAM

We welcome business professionals from countries outside the United States to finance or lease a Volvo during their stay in the U.S. Contract length is limited to their length of stay as governed by the applicant's Visa and employment contract. Subject to credit approval with Volvo Car Financial Services.

### COLLEGE GRADUATE PROGRAM

You've worked hard to earn your degree. Now the Volvo Graduate Program can make it easy for you to drive a Volvo. With flexible and competitive financing options available for graduates, Volvo Car Financial Services can help you to step into the luxury of driving a Volvo with only a 5% down payment upon credit approval.

### VOLVO MOBILITY PROGRAM

The goal of the Volvo Mobility Program is to assist persons with physical disabilities or hearing impairment. For those with exceptional transportation needs, this can be facilitated within the extraordinary comfort and safety of a specially adapted Volvo. For additional information on this program, please contact **Mobility by Volvo Customer Care** at (800) 480-9012.

### PERSONAL SHOPPER

The Volvo Personal Shopper is dedicated to providing you with a whole new level of shopping convenience. Whether you'd like help identifying the Volvo model that best fits your lifestyle, detailed information on any Volvo model, or a comparison against the competition, Volvo is there to help. We can arrange a Guest Drive for you at your nearest Volvo Retailer. So make the most of your shopping time and call the Volvo Personal Shopper at 1-800-550-5658. (U.S. only)

## VOLVO OVERSEAS DELIVERY

Volvo Overseas Delivery offers a unique way to buy your new custom-built car as well as a unique way to see more of Europe. And when you're done traveling, bring the pleasure of driving a Volvo back home. Purchase any new Volvo as part of the Volvo Overseas Delivery Program and enjoy all this – and more:

- Attractive pricing on US models.
- Access to colors and certain features normally only available in Europe.
- 15 days of international insurance and temporary European registration included.
- Two complimentary round-trip tickets to Scandinavia (a peak season surcharge may apply).
- One free hotel night in Gothenburg, Sweden, the home of Volvo.
- An exciting Volvo Factory Tour or a visit to the new Volvo Brand Experience Center.
- An exclusive VIP delivery experience at the Volvo Factory Delivery Center.
- The opportunity to explore Europe in the comfort and safety of your own Volvo, either with one of our spectacular tours or on your own.
- Complimentary home shipment services. Just leave your car with us. We'll ship it to you the convenient way while you relax and enjoy your complimentary flight back home.

Can you think of a better way of traveling overseas and making your souvenir part of an unforgettable experience? If you would like to know more, contact your local Volvo retailer, our Customer Care Center (800) 631-1667, or visit [www.volvocars.us/mybagsarepacked](http://www.volvocars.us/mybagsarepacked) [www.facebook.com/volvooverseasdelivery](http://www.facebook.com/volvooverseasdelivery)

## SERVICE AND WARRANTY

### VOLVO ROADSIDE ASSISTANCE

Whenever you need us, we're just a phone call away. Our nationwide network of retailers and authorized service providers are ready to assist. Whether you require roadside assistance or maps and routing information for your next trip, refer to your Volvo Roadside Assistance card and dial **1-800-63-VOLVO** – anytime, day or night. Your complimentary four-year membership activates the moment you become a Volvo owner. A connection to Volvo Roadside Assistance can also be made thru an app. Download the free app for iPhone or Android by typing Volvo Roadside Assistance / US through your app store.

## VOLVO NEW CAR WARRANTY

Your new car warranty provides comprehensive coverage for 4 years or 50,000 miles, whichever occurs first. Additional warranties cover corrosion, seat belts, the supplemental restraint system, emission systems, genuine Volvo replacement parts and genuine Volvo accessories. Should you encounter any problem with your Volvo, simply contact the nearest retailer for assistance. Where your warranty ends, Volvo Increased Protection (VIP) plans begin. To purchase the additional protection of a VIP plan, contact your local retailer.

## COMPLIMENTARY FACTORY SCHEDULED MAINTENANCE

Volvo is committed to a premium ownership experience for its customers. To further enhance your ownership experience, all 2016 model year Volvo's sold in the United States will include Complimentary Factory Scheduled Maintenance. This program provides scheduled maintenance coverage for the first 3 years or 36,000 miles, is designed to complement your Volvo warranty, and will help ensure trouble free operation of your Volvo. Coverage includes factory recommended maintenance including oil and filter changes, checks and adjustments as listed in your Warranty and Maintenance Records Information booklet, for the first three maintenance services at intervals of 10,000, 20,000 and 30,000 miles.

Service must be performed within 1,500 miles before or after each scheduled interval. Coverage is limited to scheduled maintenance items listed in the 2016 model year Warranty and Maintenance Records Information booklet. An authorized retailer must perform maintenance. Offer is transferable. Optional Factory Scheduled Maintenance program upgrades are also available that will allow you to customize coverage to meet your driving needs. See your Volvo retailer for details.

## VOLVO SERVICE ADVANTAGE

- Complimentary Software Updates
- Complimentary Vehicle Diagnostics
- Alternate Transportation
- Personal Service Contact
- Car Wash
- Roadside Assistance
- Lifetime Replacement Parts & Labor Warranty.

For additional information:

[www.volvocars.us/volvoserviceadvantage](http://www.volvocars.us/volvoserviceadvantage)





#### Momentum

---



**19"**, 10-Spoke Turbine, Silver, 172  
(Standard)



**20"**, 5-Double Spoke,  
Matt Tech Black/Diamond Cut, 234  
(Optional)

#### Inscription

---



**20"**, 10-Spoke, Silver/Diamond Cut, 173  
(Standard)



**21"**, 8-Spoke, Silver/Diamond Cut, 174  
(Optional)

#### R-Design

---



**20"**, 5-Spoke, Matt Black/Diamond Cut  
(Standard)



**22"**, 6-Double Spoke,  
Matt Tech Black/Diamond Cut, 175  
(Optional)

The exterior colour you choose has a dramatic impact on the personality of your XC90. But no matter which you choose, each one imbues the car with a sense of luxury and presence.



**614**  
Ice White



**707**  
Crystal White pearl metallic  
(Also available for R-Design)



**711**  
Bright Silver metallic



**714**  
Osmium Grey metallic  
(Also available for R-Design)



**477**  
Electric Silver pearl metallic



**720**  
Bursting Blue metallic  
(R-Design only)



**467**  
Magic Blue metallic



**700**  
Twilight Bronze metallic



**492**  
Savile Grey metallic



**717**  
Onyx Black metallic  
(Also available for R-Design)



**487**  
Ember Black pearl metallic



**719**  
Luminous Sand metallic



**612**  
Passion Red  
(R-Design only)

**Please note:** It's not possible to reproduce exact original shades in printed matter and on screen. Please ask your Volvo Car dealer to show you samples.



# V O L V O



**MODEL 2016 | VOLVOCARS.US**

Specifications, features, and equipment shown in this catalog are based upon the latest information available at the time of publication. Volvo Cars of North America, LLC reserves the right to make changes at any time, without notice, to colors, specifications, accessories, materials, and models. For additional information, please contact your authorized Volvo retailer. © 2015 Volvo Cars of North America, LLC. Printed in USA on 100% recyclable paper. **MY16A**

