



CT

LEXUS | 2013

Get more fun out of
EVERY MILE.



THE CT200h | in Starfire Pearl

In addition to its unparalleled efficiency, exhilarating handling and convenient five-door design, the CT includes some of the most innovative thinking in the industry. Like carpeting composed of 30% plant-based sources, the world's first automotive speakers constructed with sustainable bamboo charcoal-based resin, and a design that allows 90% of the vehicle to be fully recycled.¹

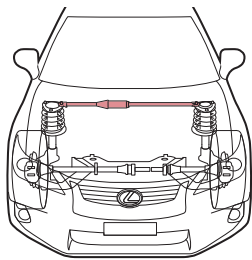


PRESENTING THE 2013 CT AND CT F SPORT HYBRIDS

With a luxury-best² EPA-estimated 42 miles per gallon combined,³ the only difficult decision you'll face is how to spend your time between fill-ups. Switching to Sport mode and using the rear double-wishbone suspension to dissect a curve? Or buying movie tickets and making dinner reservations through available Lexus Enform^{®4}? Easy answer: Do both. Looking to make those miles even more interesting? The CT F SPORT and F SPORT Accessories⁵ push the performance and design of the CT even further, making every mile you spend behind the wheel more memorable than the last.

THE CT 200h F SPORT | in Obsidian

Offering the next level of performance and styling, the CT F SPORT features a more dynamic sport-tuned suspension to help provide enhanced handling. As well as a bold exterior design that includes a larger rear spoiler, distinctive mesh grilles, 17-inch wheels⁶ with a Dark Graphite finish and exclusive Ultrasonic Blue Mica and Ultra White exterior color options. Inside, you'll find racing-inspired sport aluminum pedals, available black leather trim with white perforations and a shift knob and F SPORT steering wheel trimmed in perforated



LATERAL PERFORMANCE DAMPERS

The lateral performance dampers in the front and rear of the CT were developed by Yamaha® to provide additional rigidity to the chassis while also minimizing vibrations. The result: these help enhance handling, and provide a more linear steering feel



If not for its luxury-best² EPA-estimated 42 miles per gallon combined,³ it would be easy to forget you're in a hybrid at all. Which is exactly the point. To help you attack corners with vigor, the CT wields a MacPherson strut suspension in the front and a fully independent double-wishbone suspension in the rear. And to help provide even greater agility, the center of gravity is lowered through centrally mounted

Fewer gallons.
MORE Gs.





HANDLE CURVES AND DINNER RESERVATIONS.

To create the most dynamic driving experience possible, the position and angle of the driver's seat, steering wheel and pedals were precisely calculated to place you closer to the center of gravity. And to help you make the most of every second spent there, the CT offers the ability to do everything from customizing the engine's performance to accessing your favorite smartphone apps like Yelp® and

ENFORM APP SUITE

The available Lexus Enform® App Suite⁴ uses your compatible smartphone to give you in-vehicle access to your favorite mobile applications. You can connect to Bing™, iHeartRadio, MovieTickets.com, OpenTable, Pandora®, Yelp and Facebook Places. Learn more at lexus.com/CT/enform.



DRIVE MODE SELECT

Drive Mode Select enables you to customize the performance of your CT in four ways. In addition to Normal mode, EV⁷ runs on battery power alone at low speeds and for short distances, and ECO optimizes systems for additional efficiency. In Sport mode, performance and steering feel are maximized, a tachometer gauge is displayed and the instrument panel illumination changes from blue to red.



SPORT SEATS

Built to hold you while your CT holds curves, the front sport seats feature pronounced side bolsters engineered with internal wire framing for additional lateral support during high-G cornering. And to help provide added comfort, the driver's seat includes power-adjustable lumbar support. Even the seating material is impressive. NuLuxe weighs half as much as leather, and its manufacturing process generates no VOCs and 65% fewer CO₂ emissions than other synthetic





Sticks to roads. REPELS STEREOTYPES.

If the CT's performance driving modes and the CT F SPORT's more dynamic handling haven't already dispelled your preconceived notions of hybrid vehicles, available F SPORT Accessories⁵ will obliterate them. Engineered for those craving an even greater performance edge and aggressive appearance, available F SPORT Lowering Springs,⁵ Sway Bars⁵ and 17-inch wheels^{5,6} are designed by Lexus engineers and rigorously track-tested so they offer full warranty coverage. Learn more and configure your own CT at lexus.com/CT/fsport.



F SPORT 17-in trident-five-spoke alloy wheels^{5,6}



F SPORT Lowering Spring Set⁵



F SPORT Sway Bar Kit⁵

EXTERIOR COLORS



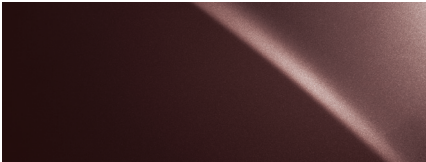
SILVER LINING METALLIC



STARFIRE PEARL



NEBULA GRAY PEARL



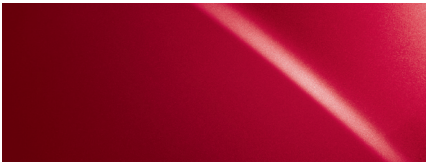
FIRE AGATE PEARL



OBSIDIAN



ULTRA WHITE*

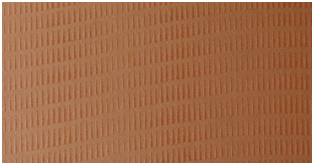


MATADOR RED MICA



ULTRASONIC BLUE MICA*

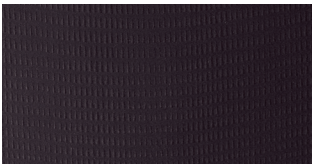
INTERIOR COLORS



CARAMEL NULUXE



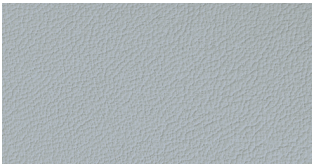
ECRU NULUXE



BLACK NULUXE†



BLACK LEATHER‡

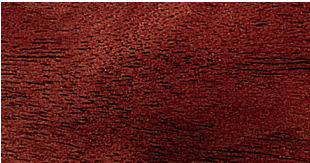


WATER GRAY LEATHER‡

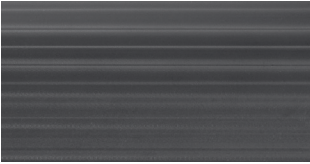


BLACK LEATHER
WITH WHITE PERFORATIONS*‡

DASH PANEL ACCESSORY TRIM



MATTE BROWN ASH BURL**



STRIATED GRAPHITE METALLIC†**



BAMBOO**

COLOR
AVAILABILITY

	SILVER LINING METALLIC	STARFIRE PEARL	NEBULA GRAY PEARL	FIRE AGATE PEARL	OBSIDIAN	ULTRA WHITE*	MATADOR RED MICA	ULTRASONIC BLUE MICA*	MATTE BROWN ASH BURL**	STRIATED GRAPHITE METALLIC†**	BAMBOO**
CARAMEL NULUXE		•	•	•	•		•		•	•	•
ECRU NULUXE	•	•	•	•	•		•		•	•	•
BLACK NULUXE†	•	•	•	•	•	•	•	•	•	•	•
BLACK LEATHER‡	•	•	•	•	•		•		•	•	•
WATER GRAY LEATHER‡	•	•	•		•		•		•	•	•
BLACK LEATHER WITH WHITE PERFORATIONS*‡	•		•		•	•	•	•	•	•	•
INTERIOR COLOR									INTERIOR TRIM		

*FSPORT only. †Standard on FSPORT. ‡Leather trim is available. **Dash panel trim is available.

OVERVIEW

TYPE

Five-passenger hybrid five-door luxury sedan

CONSTRUCTION

Welded-steel unibody, front and rear lateral performance dampers by Yamaha

CURB WEIGHT

3,130 lb (1,420 kg)

ENGINE

TYPE

In-line 4, Atkinson-cycle, aluminum block and head

DISPLACEMENT

1.8 liters (110 cubic inches)

VALVETRAIN

Dual cam, four valves per cylinder, with continuously Variable Valve Timing with intelligence (VVT-i)

COMPRESSION RATIO

13.0:1

ELECTRIC-DRIVE MOTOR

High-output, permanent-magnet, electric-drive motor with EV mode⁷

TOTAL SYSTEM HORSEPOWER

134 hp

FUEL REQUIREMENT

Regular unleaded, 87 octane

EMISSION RATING

Certified Super Ultra-Low Emission Vehicle (SULEV II)

CHASSIS

SUSPENSION

Front: Independent, MacPherson struts with coil springs, low-friction shock absorbers and stabilizer bar

Rear: Independent, double-wishbone with coil springs, low-friction shock absorbers and stabilizer bar

STEERING

Electronic Power Steering (EPS) system

BRAKES

Four-wheel power-assisted discs with Electronic Controlled Braking (ECB), four-sensor, four-channel Anti-lock Braking System (ABS), Electronic Brakeforce Distribution (EBD) and Brake Assist⁸

10.0-in ventilated front, 10.9-in solid rear discs with regenerative braking function

WHEELS AND TIRES

17 x 7.0-in 10-spoke alloy wheels with 215/45R17 all-season tires⁶ Compact spare tire/wheel (Standard CT 200h)

F SPORT 17 x 7.0-in trident-five-spoke alloy wheels with 215/45R17 all-season tires^{5,6} (Available)

17-in 10-spoke alloy wheels with Dark Graphite finish and 215/45R17 all-season tires⁶ (Standard CT 200h F SPORT)

PERFORMANCE

0-60 MPH ACCELERATION

9.8 seconds⁹

TOP TRACK SPEED (electronically limited)

113 mph⁹

EPA FUEL ECONOMY ESTIMATES (city/highway/combined)

43/40/42 mpg³

AERODYNAMIC DRAG COEFFICIENT

0.29

TURNING CIRCLE

34.2 ft

DRIVETRAIN

TRANSMISSION

Electronically controlled Continuously Variable Transmission (ECVT)

DRIVE WHEELS

Front-wheel drive

WHEELS



17-in 10-spoke alloy wheels⁶
STANDARD (CT 200h)



F SPORT 17-in trident-five-spoke alloy wheels^{5,6}
AVAILABLE



17-in 10-spoke alloy wheels⁶
with Dark Graphite finish
STANDARD (CT 200h F SPORT)

BODY AND DIMENSIONS

HEADROOM front/rear

38.3/37.0 in (974/940 mm)

SHOULDER ROOM front/rear

53.9/52.6 in (1,370/1,335 mm)

HIP ROOM front/rear

53.0/51.8 in (1,345/1,315 mm)

LEGROOM front/rear

42.1/32.9 in (1,069/835 mm)

HEIGHT

56.7 in (1,440 mm)

CARGO CAPACITY

14.3 cu ft (405 L)¹⁰ behind rear seats

FUEL-TANK CAPACITY

11.9 gal (45 L)

WIDTH

69.5 in (1,765 mm)

WHEELBASE

102.4 in (2,600 mm)

OVERALL LENGTH

170.1 in (4,320 mm)



LUXURY FEATURES

CT 200h

LUXURY AND CONVENIENCE

SmartAccess^{11,12} with push-button Start/Stop and touch sensors on exterior front-door handles
Power tilt-and-slide moonroof with sliding sunshade
Dual-zone automatic climate control with interior air filter
Tilt-and-telescopic steering column
Power windows with one-touch auto open/close
Powered auxiliary console (not included if equipped with Navigation)
Center console with cupholders and storage bin
Lexus Personalized Settings (LPS)¹³ to customize select electronic functions
Illuminated entry system

SEATING AND TRIM

NuLuxe-trimmed interior
Leather-trimmed steering wheel
10-way power driver's seat (including lumbar), four-way manual front passenger's seat
Height-adjustable headrests for all seating positions

COMMUNICATION AND AUDIO

Lexus six-speaker Sound System with Automatic Sound Levelizer (ASL) and in-dash CD player
SiriusXM Satellite Radio^{14,15} Subscription required. 90-day trial subscription included
USB and auxiliary iPod^{®16}/MP3/Windows Media[®] Audio (WMA) port
Bluetooth technology¹⁷

INSTRUMENTATION AND CONTROLS

Steering-wheel-mounted audio, phone and display controls
Multi-information display
Drive Mode Select with Normal, Sport, ECO and EV (Electric Vehicle)⁷ driving modes

CT 200h F SPORT

Includes all CT 200h equipment plus:
17-in 10-spoke alloy wheels⁶ with Dark Graphite finish
F SPORT-tuned suspension
F SPORT upper and lower grille inserts and larger rear spoiler
Black NuLuxe interior trim
F SPORT leather-trimmed steering wheel and shift knob, front fender badges,

striated graphite metallic dash panel, aluminum sport pedals and metal front door-sill scuff plates
Black headliner

CT 200h F SPORT WITH LEATHER

Includes all CT 200h F SPORT equipment plus:

Black leather interior trim with white perforations
Lexus Memory System to control driver's seat (except lumbar) and outside mirrors
Four-way power front passenger's seat
Heated front seats
Electrochromic (auto-dimming) outside mirrors with auto tilt-down in reverse
Rain-sensing variable intermittent windshield wipers

SAFETY AND SECURITY FEATURES

ACTIVE SAFETY

Vehicle Stability Control (VSC)¹⁸
Traction Control (TRAC)
Four-wheel power-assisted disc brakes; Electronic Controlled Braking (ECB); four-sensor, four-channel Anti-lock Braking System (ABS); Brake Assist;⁸
Electronic Brakeforce Distribution (EBD)
Smart Stop Technology¹⁹

PASSIVE SAFETY

Driver's and front passenger's advanced airbag system (SRS);²⁰ front seat-mounted side airbags (SRS);²⁰ driver's and front passenger's knee airbags (SRS);²⁰ front and rear side curtain airbags (SRS)²⁰
Whiplash Injury Lessening (WIL) front seats²¹
Three-point seatbelts for all seating positions, pre-tensioners with force limiters for front seats

SECURITY

Available Safety Connect²² offers Automatic Collision Notification, Stolen Vehicle Location, Emergency Assistance Button (SOS) and Enhanced Roadside Assistance²³ services. Subscription required. One-year trial subscription included
Vehicle theft-deterrent and engine-immobilizer system¹²

ACCESSORIES

Alloy wheel locks
All-weather floor mats²⁸
Ashtray cup
Car cover
Cargo liner
Cargo net – envelope¹⁰
Cargo net – spider¹⁰
Cargo tray
Carpet cargo mat
Dash panels – bamboo, matte brown ash burl and striated graphite metallic
Door edge guards
First aid kit
Glass breakage sensor
Illuminated door sills
Key glove
Paint protection film²⁹
Rear bumper appliqué
Rear bumper protector (stainless-steel matte finish)
Remote engine starter¹²

OPTION PACKAGES*

SEAT COMFORT PACKAGE

Four-way power front-passenger's seat
Heated front seats

PREMIUM PACKAGE (REQUIRES LEATHER PACKAGE OR SEAT COMFORT PACKAGE)

Lexus 10-speaker Premium Sound System with Automatic Sound Levelizer (ASL) and in-dash, single-feed, six-disc CD auto-changer (single-disc DVD/CD player when equipped with Navigation)
Electrochromic (auto-dimming) inside mirror with compass (compass not included if equipped with Navigation)
HomeLink[®] universal transceiver to operate compatible garage, gate, home lighting and home security systems

NAVIGATION PACKAGE (REQUIRES PREMIUM PACKAGE)

Navigation System¹⁴ including Remote Touch²⁴ device, voice command,

retractable color LCD display with integrated backup camera²⁵ and enhanced *Bluetooth*[®] technology¹⁷
NavTraffic,^{TM14,15} NavWeather,^{TM14,15} Fuel Prices, Sports and Stocks from SiriusXM^{14,15} Subscription required. One-year trial subscription included
Lexus Enform⁴ offers Destination Assist and eDestination. Subscription required. One-year trial subscription included
Lexus Enform App Suite⁴ with Bing, iHeartRadio, MovieTickets.com, OpenTable, Pandora, Yelp and Facebook Places. Subscription required. One-year trial subscription included
HD Radio^{TM26}

LEATHER PACKAGE (REQUIRES PREMIUM PACKAGE)

Perforated leather-trimmed interior
Lexus Memory System to control power

driver's seat (except lumbar) and outside mirrors
Four-way power front passenger's seat
Heated front seats
Electrochromic (auto-dimming) outside mirrors with auto tilt-down in reverse
Rain-sensing variable intermittent windshield wipers

OPTIONS*

INDIVIDUAL OPTIONS

Pre-Collision System (PCS)²⁷ and Dynamic Radar Cruise Control (requires Navigation and Leather Packages)
Electrochromic (auto-dimming) inside mirror with compass and backup camera²⁵
LED low-beam headlamps with dynamic auto-leveling and headlamp washers
Intuitive Parking Assist

*Please see back cover for more information regarding options/packages.

For a complete list of standard features, options and accessories, please visit lexus.com/CT/features.

WARRANTY

Four-year/50,000-mile Lexus Limited Warranty. Eight-year/100,000-mile Hybrid System Warranty. Six-year/70,000-mile Powertrain Warranty. Six-year/unlimited-mileage Corrosion Perforation Warranty. All warranties with zero deductible. See the *CT Warranty and Services Guide* at your Lexus dealer for details.

1. Based on ISO 22628 standards. 2. Based on 2012/2013 EPA-rated MPG, Small Compact Luxury segment. 3. 2013 EPA-estimated 43/40/42 (city/highway/combined) MPG. Actual mileage will vary. 4. Always drive safely, obey traffic laws & focus on the road while driving. Apps/services vary by phone/carrier; functionality depends on many factors. Select apps use large amounts of data, you are responsible for charges. Apps/services are subject to change. Apps identified by ™ or ® are trademarks or registered trademarks of their respective companies. For enrollment, cost and more details, see lexus.com/enform. 5. F SPORT Accessories are warranted for 12 months from the date of installation or for the balance of the new-car or Certified Pre-Owned (CPO) warranty in force at the date of installation, whichever is greater, when installed by an authorized Lexus dealer. F SPORT Accessories installed by anyone other than an authorized Lexus dealer are warranted for 12 months from the date of purchase only, and the warranty coverage is limited to the replacement value of the F SPORT Accessories. These warranties do not cover maintenance services such as replacement of brake pads/linings and clutch linings; or noise, vibration, cosmetic conditions and other deterioration caused by normal wear and tear. Part failure caused by improper installation by anyone other than an authorized Lexus dealer may void the F SPORT Accessories warranty, the new-vehicle warranty or both. F SPORT is a trademark of Toyota Motor Corporation. Products available through participating Lexus dealers. 6. 17-in performance tires are expected to experience greater tire wear than conventional tires. Tire life may be substantially less than 20,000 miles, depending upon driving conditions. 7. CAUTION! When driving a hybrid vehicle, pay special attention to the area around the vehicle. Because there is little vehicle noise in electric-only mode, pedestrians, people riding bicycles or other people and vehicles in the area may not be aware of the vehicle starting off or approaching them, so take extra care while driving. EV mode works under certain conditions at low speeds for up to a mile. See *Owner's Manual*. 8. Brake Assist is designed to help the driver take full advantage of the benefits of ABS. It is not a substitute for safe driving practices. Braking effectiveness also depends on proper brake-system maintenance, tire and road conditions. 9. Performance figures are for comparison only and were obtained with prototype vehicles by professional drivers using special safety equipment and procedures. Do not attempt. 10. Cargo and load capacity limited by weight and distribution. 11. The SmartAccess system may interfere with some pacemakers or cardiac defibrillators. If you have one of these medical devices, please talk to your doctor to see if you should deactivate this system. 12. The engine immobilizer is a state-of-the-art anti-theft system. When you insert your key into the ignition switch or bring a SmartAccess fob into the vehicle, the key transmits an electronic code to the vehicle. The engine will only start if the code in the transponder chip inside the key or SmartAccess fob matches the code in the vehicle's immobilizer. Because the transponder chip is embedded in the key or SmartAccess fob, it can be costly to replace. If you lose a key or SmartAccess fob, your Lexus dealer can help. Alternatively, you can find a qualified independent locksmith to perform high-security key services by consulting your local *Yellow Pages* or by contacting www.aloa.org. 13. The Lexus Personalized Settings (LPS) can be programmed in two ways: For most models equipped with the available Navigation System, the driver can modify the settings themselves; for other models, including those without a Navigation System, programming is done by your Lexus dealer via a one-time, complimentary offer during the first 12 months from the date the vehicle is sold. See Lexus dealer for more information. 14. Availability and accuracy of the information provided by the Navigation System or any SiriusXM services mentioned (if installed) are dependent upon many factors. Use common sense when relying on information provided. Services not available in every city or roadway. Periodic Navigation updates available at additional cost. See *Navigation System Owner's Manual* or contact SiriusXM for details. 15. SiriusXM services require a subscription after trial period. Subscriptions governed by SiriusXM Customer Agreement available at siriusxm.com. If you decide to continue your SiriusXM service at the end of your complimentary trial, the plan you choose will automatically renew and bill at then-current rates unless you call 1-800-967-2346 to cancel. Fees and programming subject to change. Available only to those at least 18 years of age in the 48 contiguous United States and D.C. 16. iPod is a registered trademark of Apple Inc. All rights reserved. 17. Bluetooth technology phones listed on lexus.com have been tested for compatibility with Lexus vehicles. Performance will vary based on phone software, coverage and wireless carrier. Phones are warranted by their manufacturer, not Lexus. The Bluetooth word mark and logos are registered trademarks owned by Bluetooth SIG, Inc. and any use of such marks by Lexus is under license. Other trademarks and trade names are those of their respective owners. 18. Vehicle Stability Control (VSC) is an electronic system designed to help the driver maintain vehicle control under adverse conditions. It is not a substitute for safe driving practices. Factors including speed, road conditions and driver steering input can all affect whether VSC will be effective in preventing a loss of control. See *Owner's Manual* for details. 19. Smart Stop Technology operates only in the event of certain simultaneous brake and gas pedal applications. When engaged, the system will reduce engine power to help the brakes bring the vehicle to a stop. Factors including speed, road conditions and driver input can all impact stopping distance. Smart Stop Technology is not a substitute for safe and attentive driving and does not guarantee instant stopping. See *Owner's Manual* for details. 20. All the airbag (AB) systems are Supplemental Restraint Systems. All ABs (if installed) are designed to inflate only under certain conditions and in certain types of severe collisions: frontal and knee ABs typically inflate in frontal collisions; side and side curtain ABs in side collisions; Roll-Sensing Curtain ABs at a severe tilt degree, roll or lateral G-force. In all other accidents, the ABs will not inflate. To decrease the risk of injury from an inflating AB, always wear seatbelts, sit upright in the middle of the seat as far back as possible and do not lean against the door. Do not put objects in front of an AB or around the seatback. Do not use a rearward-facing child seat in any front passenger seat. The force of an inflating AB may cause serious injury or death. See *Owner's Manual* for further information/warnings. 21. Whiplash Injury Lessening front seats can help reduce the severity of whiplash injury in certain rear-end collisions. 22. Contact with the response center may not be available in all areas. Service Agreements required. A variety of subscription terms available; charges will vary. See lexus.com for details. 23. Coverage only available in the continental U.S. and Canada. See your Lexus dealer for details. 24. Be sure to obey traffic regulations and maintain awareness of road and traffic conditions. 25. The backup camera does not provide a comprehensive view of the rear area of the vehicle. You should also look around outside your vehicle and use your mirrors to confirm rearward clearance. Cold weather may limit effectiveness and view may become cloudy. 26. HD Radio™ technology manufactured under license from iBiquity Digital Corporation U.S. and Foreign Patents. HD Radio™ and the HD, HD radio, and "Arc" logos are proprietary trademarks of iBiquity Digital Corp. 27. The Pre-Collision System is designed to help reduce the crash speed and damage in certain frontal collisions only. It is not a collision-avoidance system and is not a substitute for safe and attentive driving. System effectiveness depends on many factors, such as speed, driver input and road conditions. See *Owner's Manual* for details. 28. To avoid potential interference with pedal operation, do not install a floor mat on top of an existing floor mat, and each mat must be secured with either quarter-turn fasteners or retention hooks (clips). This floor mat was designed specifically for use in this model and model year vehicle and SHOULD NOT be used in any other vehicle. 29. Lexus Genuine Accessory Warranty will only apply when the installation is performed by a trained Lexus-approved installer. If the film is installed by anyone else, the Lexus "Parts Only" warranty—12 months—will be applicable instead. See dealer for details.

*Lexus strives to build vehicles to match customer interest, and thus they typically are built with popular options and option packages. Not all options/packages are available separately, and some may not be available in all regions of the country. See lexus.com for information about options/packages commonly available in your area. If you would prefer a vehicle without any or with different options, contact your dealer to check for current availability or the possibility of placing a special order. Specifications, features, equipment, technical data, performance figures, options, and color and trim are based upon information available at time of printing, are subject to change without notice, and are for mainland U.S.A. vehicles only. Some vehicles shown with available equipment. See your Lexus dealer for details. Lexus reminds you to wear seatbelts, secure children in rear seat, obey all traffic laws and drive responsibly. For more information, call 800-USA-LEXUS (872-5398) or visit lexus.com. To learn more about your financing options, contact your Lexus dealer or call Lexus Financial Services at 800-874-7050.

