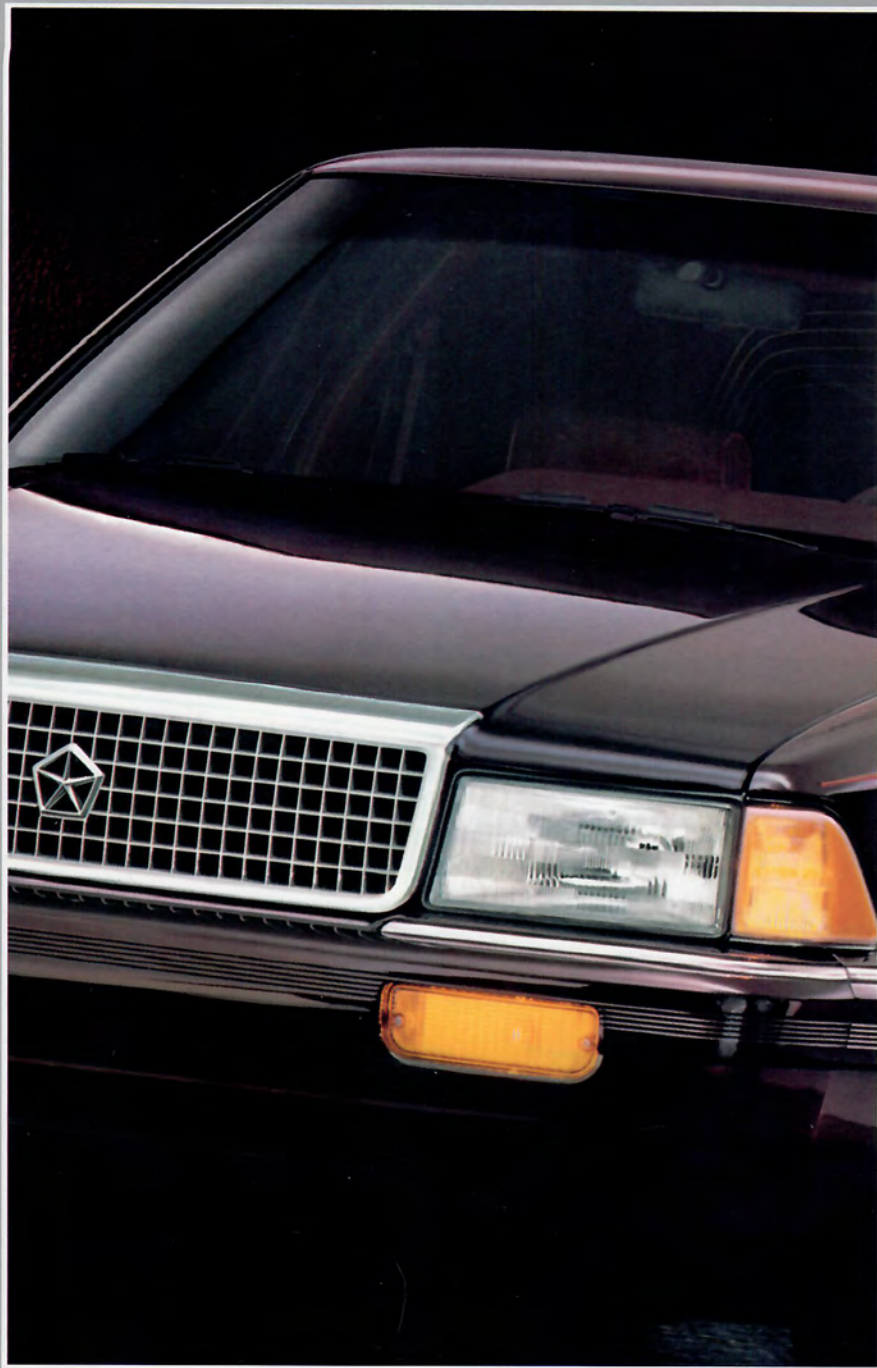


PLYMOUTH



ACCLAIM

ADVANTAGE: SAFETY

THE PLYMOUTH ADVANTAGE: ADVANCED ENGINEERING FOR THE AMERICAN FAMILY SEDAN. THE 1992 ACCLAIM CONTINUES THE PLYMOUTH TRADITION OF INNOVATION. THIS IS THE MOST DISTINCTIVE ACCLAIM YET, BLENDING ENGINEERING EXCELLENCE, SMOOTH STYLING AND THE COMFORT OF AVAILABLE SEATING FOR SIX AT A PRICE THAT MAKES THE COMPETITION TAKE NOTICE. PLYMOUTH ACCLAIM ENCOMPASSES QUALITIES SUCH AS EXCEPTIONAL ROOM, IMPRESSIVE RIDE AND HANDLING, AND UNCOMMON COMFORT APPOINTMENTS. A STANDARD DRIVER-SIDE AIR BAG* HELPS PROTECT YOU IN A FRONTAL IMPACT. STOPPING SAFETY IS GREATLY IMPROVED WITH OPTIONAL FOUR-WHEEL ANTILOCK DISC BRAKES. THE SECURITY OF THE LATEST HANDS-FREE CELLULAR PHONE TECHNOLOGY IS YOURS WITH AVAILABLE VISORPHONE®. A WEALTH OF SAFETY FEATURES, DESCRIBED THROUGHOUT THIS BOOK, MEANS INCREASED SECURITY FOR DRIVER AND PASSENGERS. ACCLAIM OFFERS THE STABILITY OF FRONT-WHEEL DRIVE, OVER 45 STANDARD FEATURES, AND THE PERFORMANCE OF AVAILABLE V6 POWER. A TRULY REFINED FIVE- OR SIX-PASSENGER SEDAN THAT'S SURPRISINGLY AFFORDABLE.



*Supplemental restraint system. Simulated air bag deployment shown.

®Visorphone is a registered trademark of Cartell, Inc. See page 15 for additional information.

*Supplemental restraint system

®Visorphone is a registered trademark of Cartell, Inc. See page 15 for additional information.



Acclaim's advanced suspension design offers superior handling and excellent ride.



Plymouth engineers extensively researched and carefully tested Acclaim to meet our customers' high demands for quality, durability, and reliability.*
*Simulated testing photo shown.



Powerful V6 now available with three-speed automatic transaxle. Shift safety interlock allows key removal only in Park.

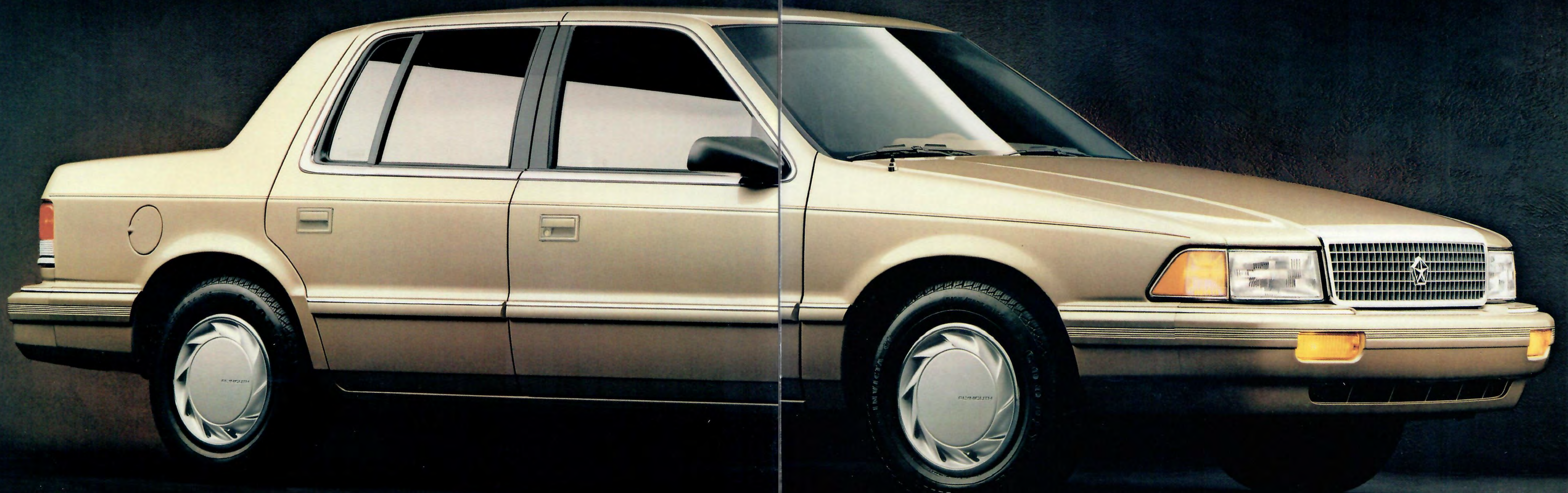


New low-rolling resistance tread design on touring tires helps improve fuel economy.



Laser-guided "Mini Perceptron" measures body panel fit and finish tolerances to ensure quality.

STYLISH ELEGANCE



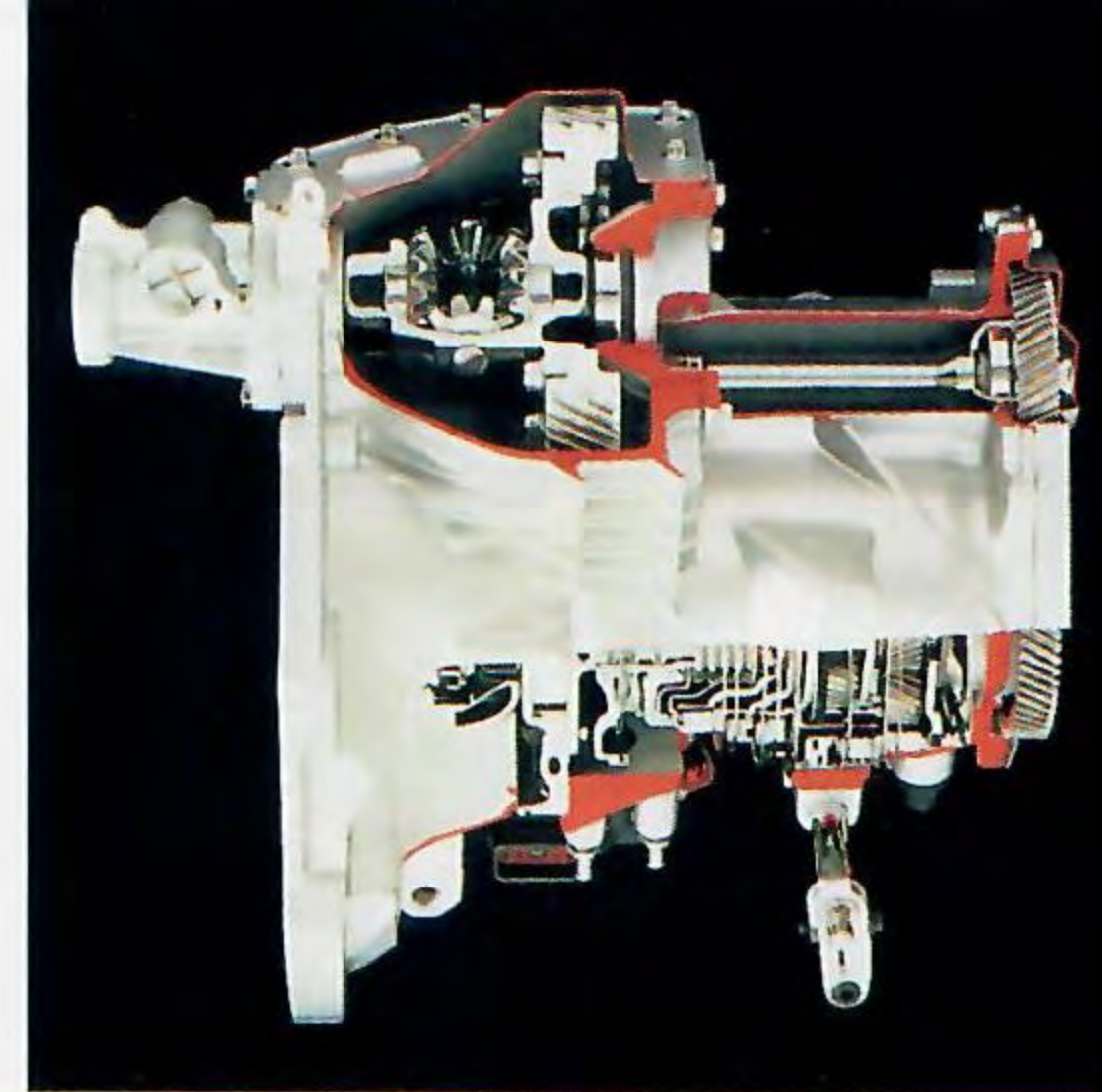
Some of the equipment shown or described throughout this catalog is available at extra cost.

About this catalog. Since the time of printing, some of the information you'll find in this catalog may have been updated. Ask your dealer for details.

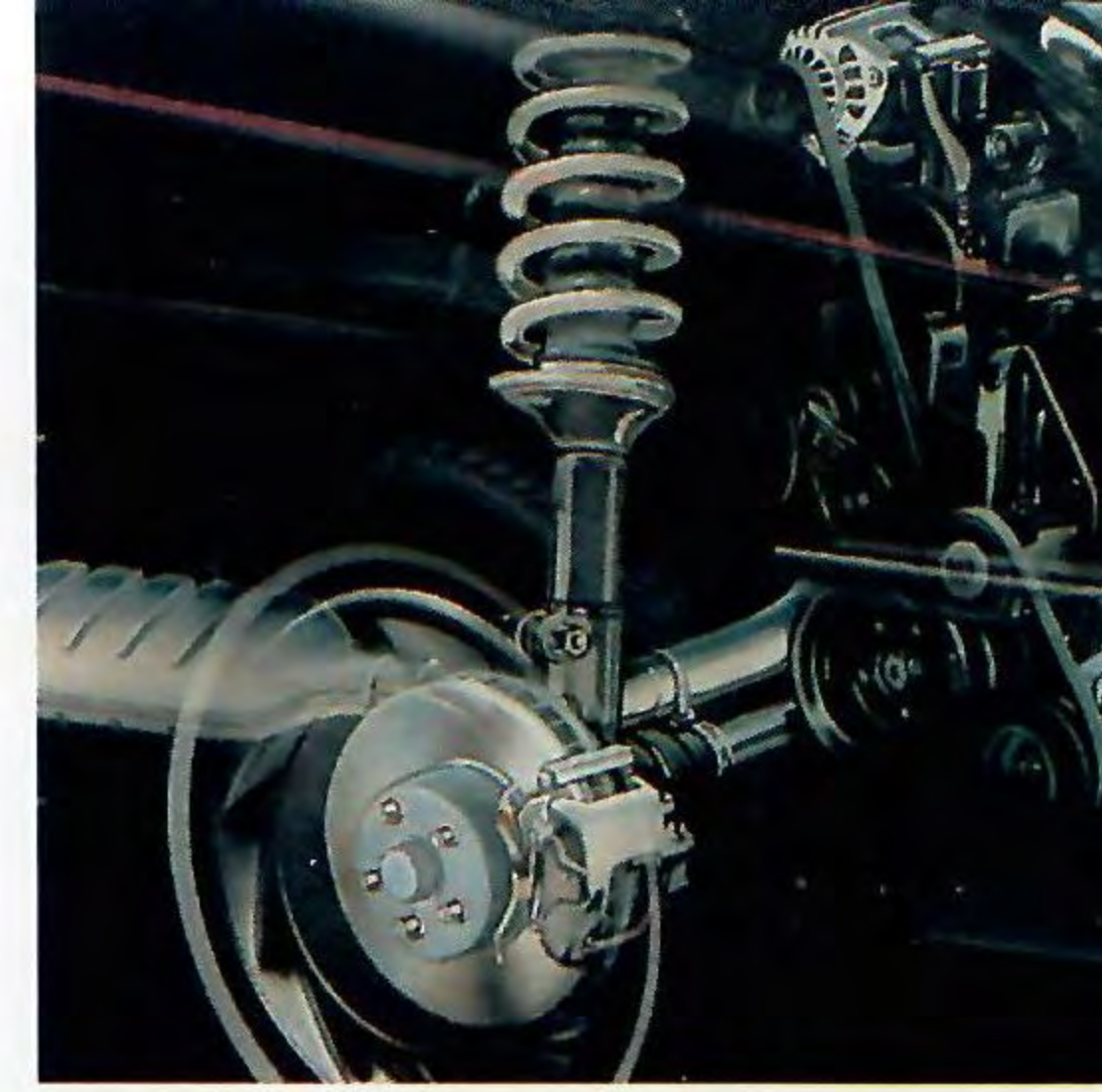
Plymouth Acclaim, shown in Light Champagne Metallic Clear Coat.



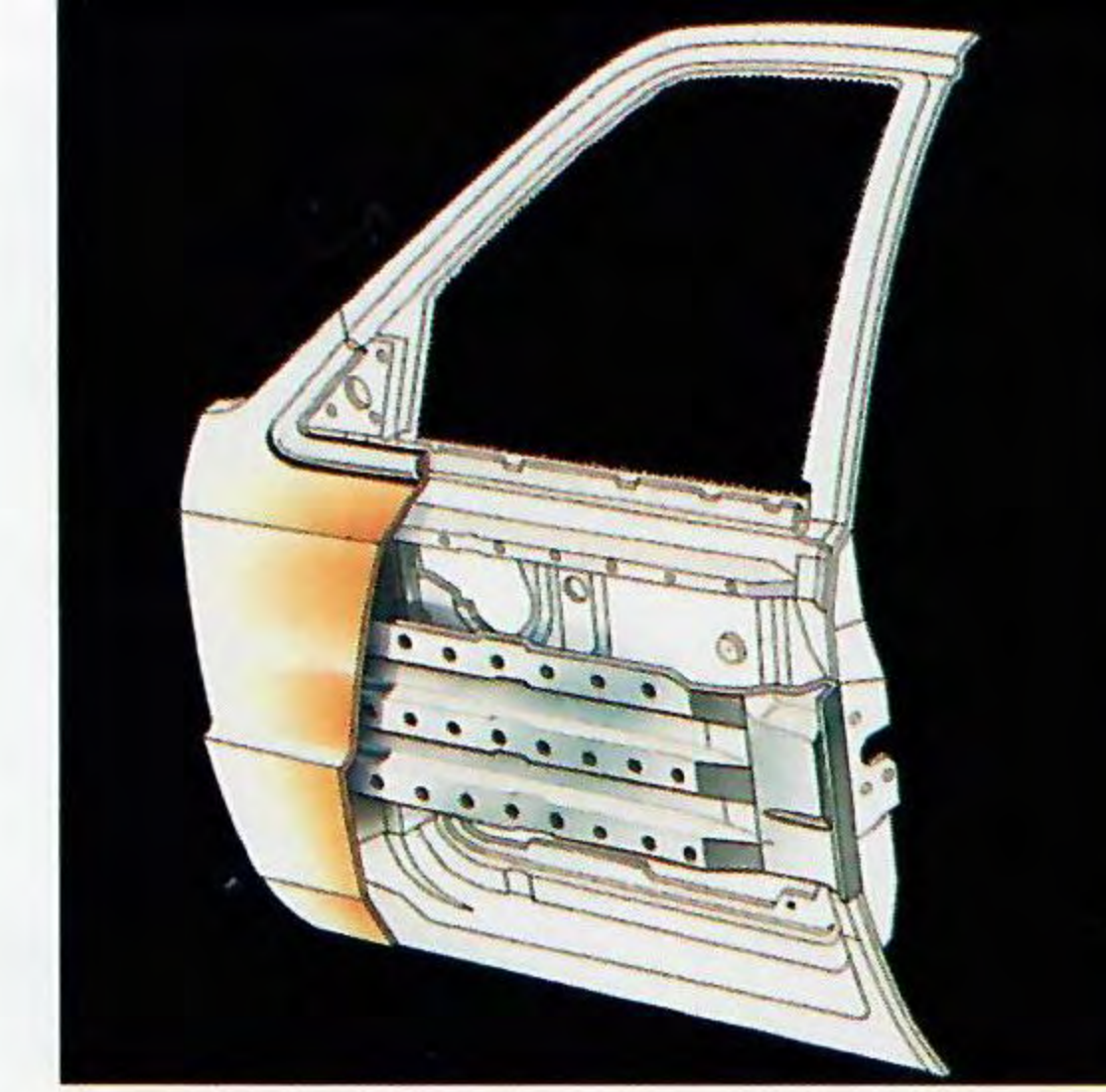
Acclaim's available 3.0-liter V6 engine now has SMPI (sequential multipoint fuel injection) for efficiency and easy cold-weather starting. A 2.5-liter EFI (electronic fuel injection) engine is standard.



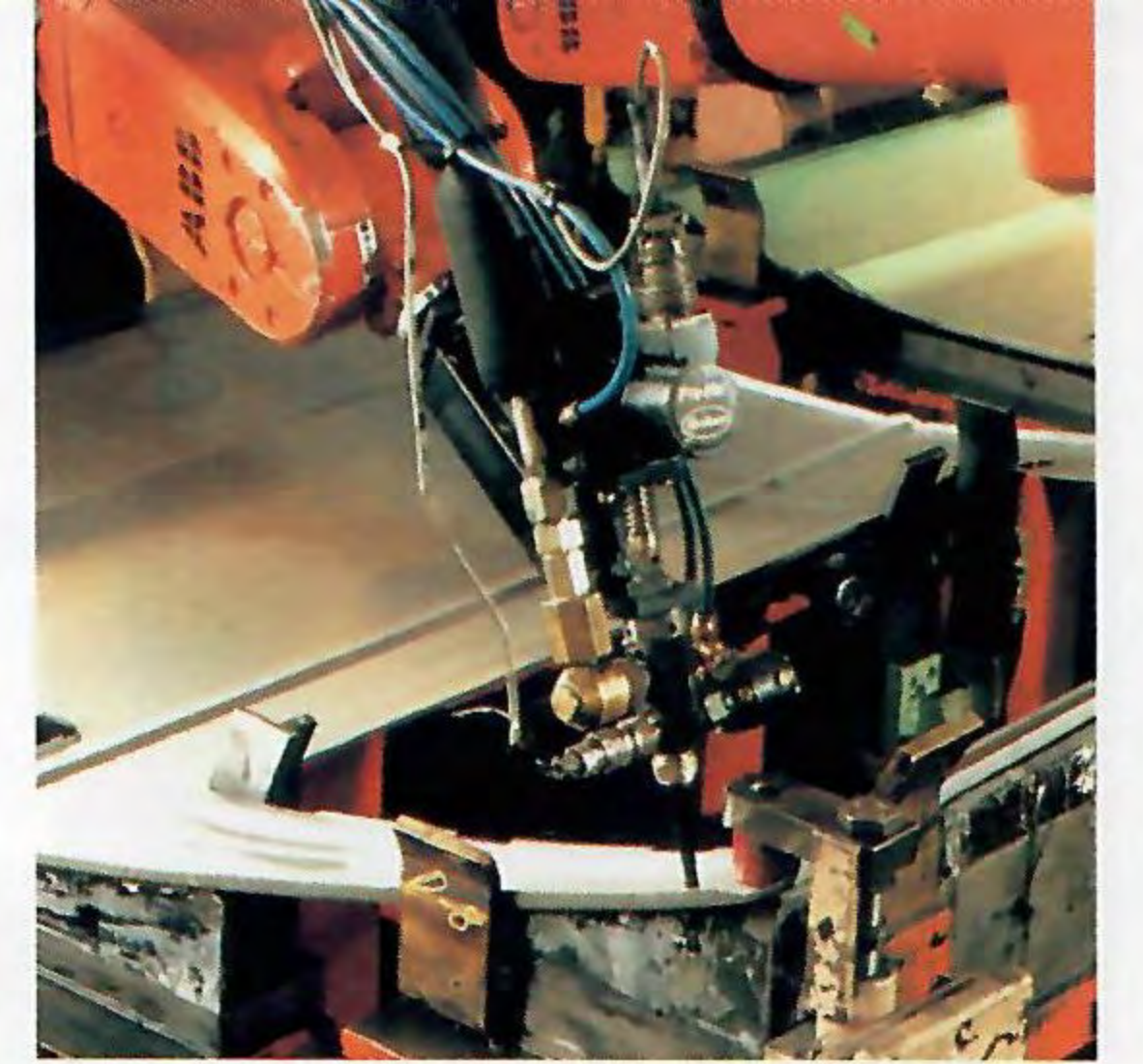
Available smooth-shifting four-speed overdrive automatic transaxle. (Manual five-speed overdrive transaxle standard. See page 12 for availability.)



Standard gas-charged struts/shock absorbers offer a quiet, firm and comfortable ride.



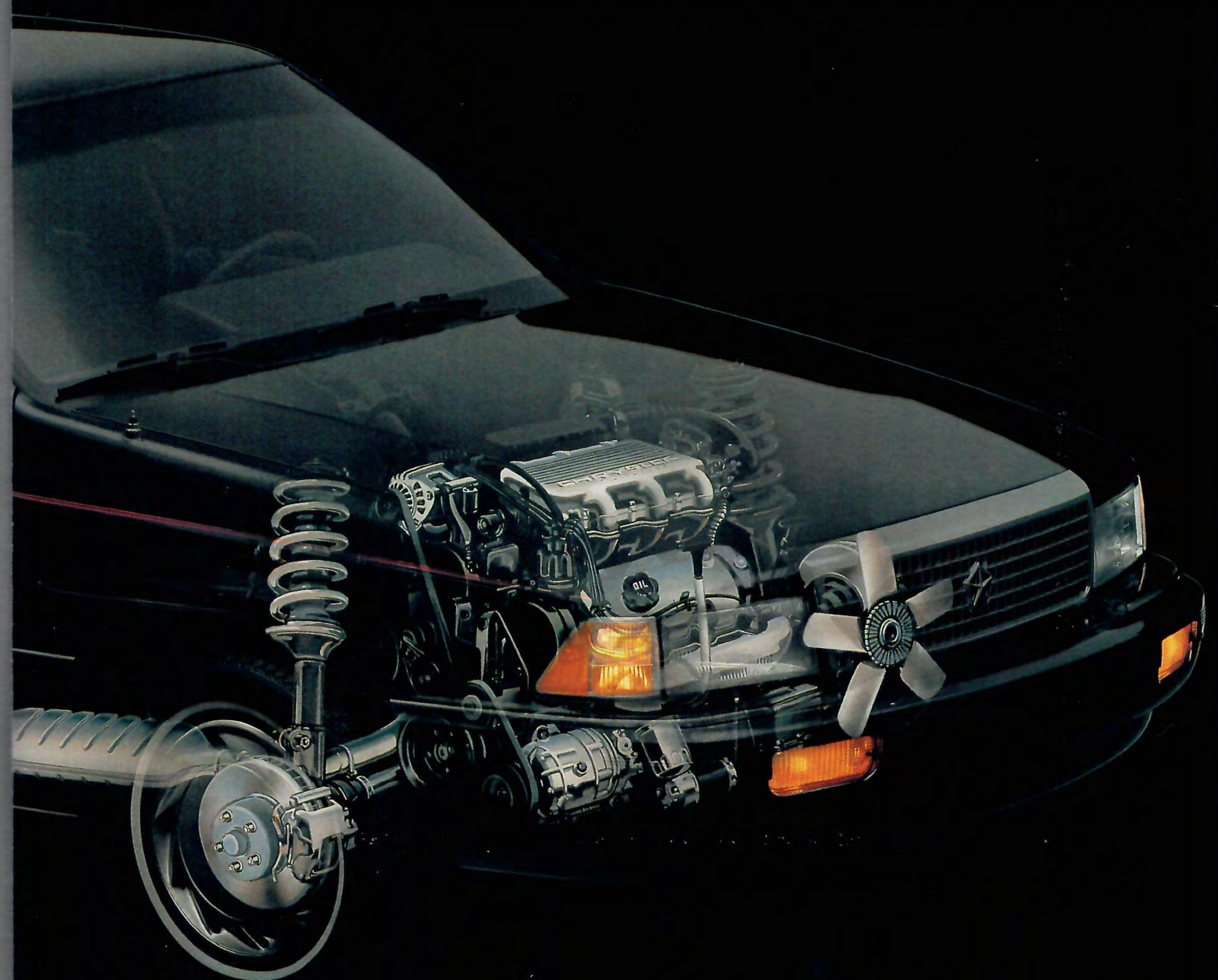
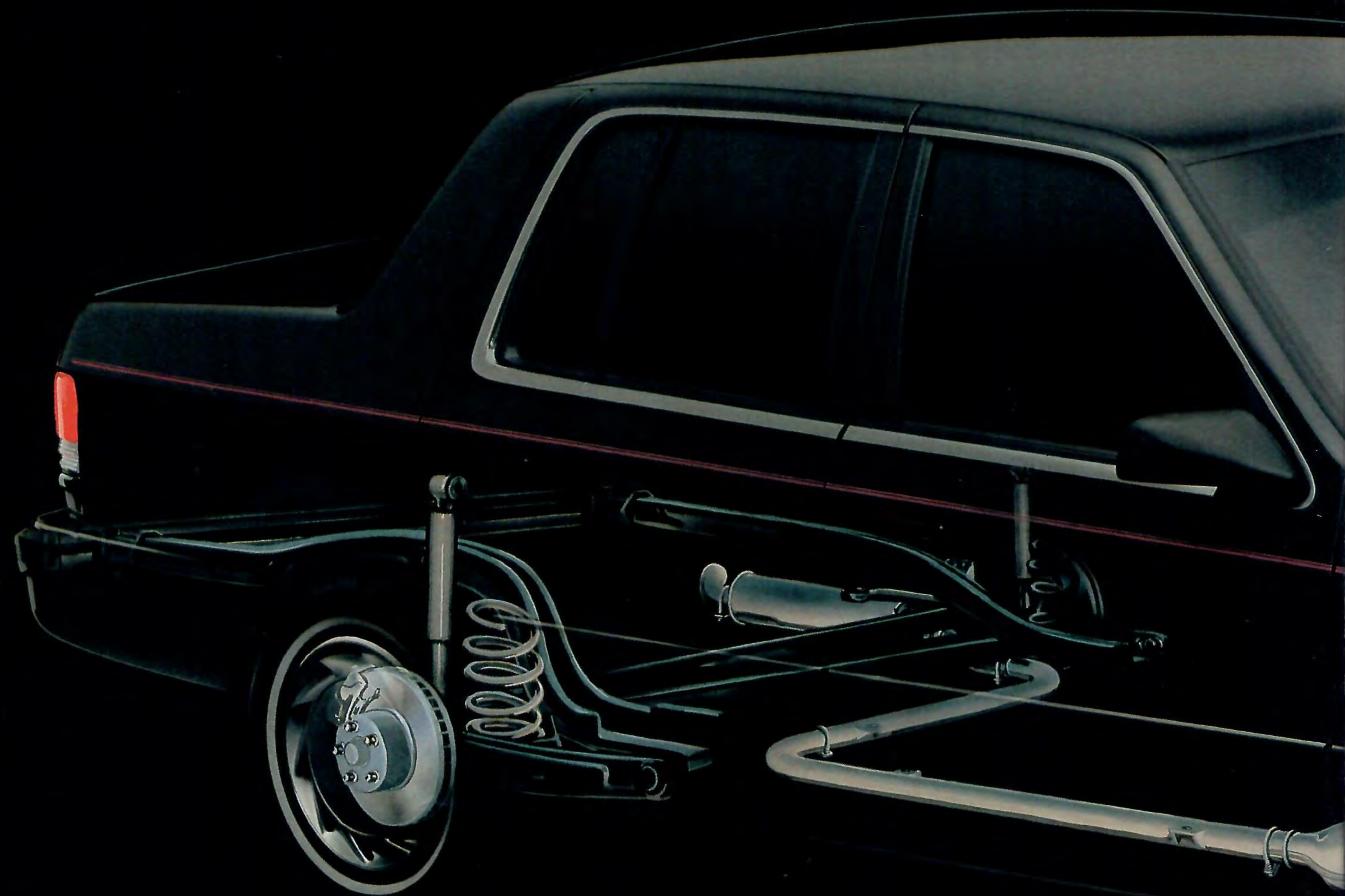
Side-door beams give extra occupant protection in the event of side impacts.



"Anaerobic" bonding of the inner to outer door assembly offers reduced noise and improved corrosion resistance.

SOPHISTICATED ENGINEERING

ADVANTAGE: PLYMOUTH





Acclaim's innovatively designed instrument panel features luxury steering wheel with driver-side air bag, easy-to-read gauges, and available tilt steering, electronic speed control, and AM/FM stereo radio with cassette player/integral digital clock.



Available split fold-down rear seatbacks allow long cargo and lock to restrict trunk access.



ENTER THE QUIET, REFINED WORLD OF ACCLAIM. CHOOSE ROOM FOR SIX WITH AN AVAILABLE 50/50 SPLIT-BENCH FRONT SEAT OR THE STANDARD FRONT BUCKET SEATS (SHOWN RIGHT). A FULL-FLOOR CONSOLE* IS ALSO AVAILABLE WITH OPTIONAL AUTOMATIC TRANSAXLE. SPACIOUS REAR SEATING OFFERS UNRESTRICTED LEG AND HIP ROOM. A NEW OPTIONAL ILLUMINATED ENTRY SYSTEM SAFELY LIGHTS THE INTERIOR BEFORE YOU ENTER. ADVANTAGE: PLYMOUTH.

**Console must be specified when ordering automatic transaxle.*

EXCEPTIONAL COMFORT



Plymouth Acclaim interior with available 50/50 split-bench front seat, shown in Champagne/Medium Champagne.



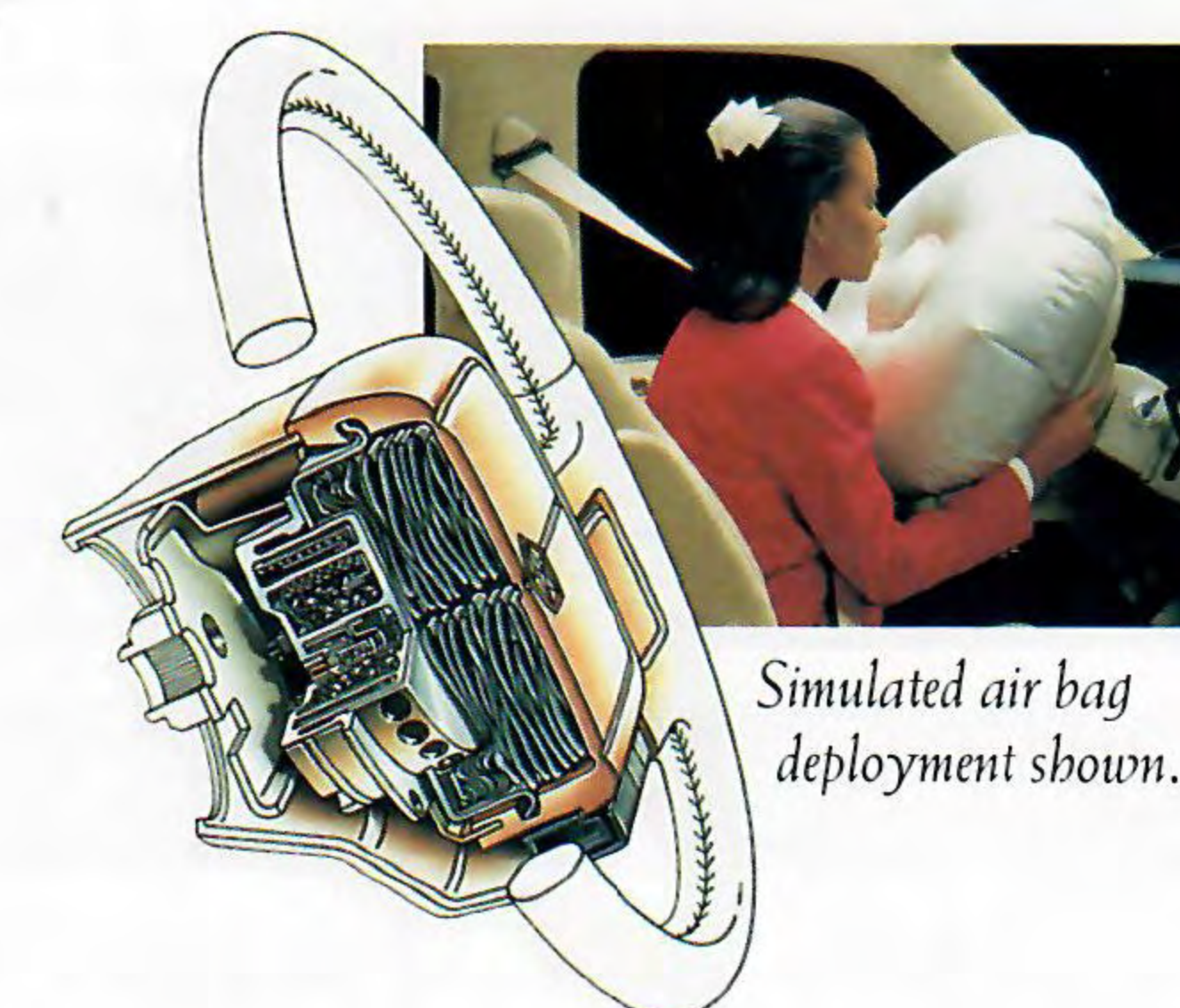
Standard driver-side air bag* offers added safety when used with a lap/shoulder restraint.



Acclaim's low liftover trunk design with high-opening lid allows the convenience of safe and easy cargo loading. Spacious trunk interior is fully carpeted and offers 14.4 cubic feet of capacity. Flat floor conceals spare tire.



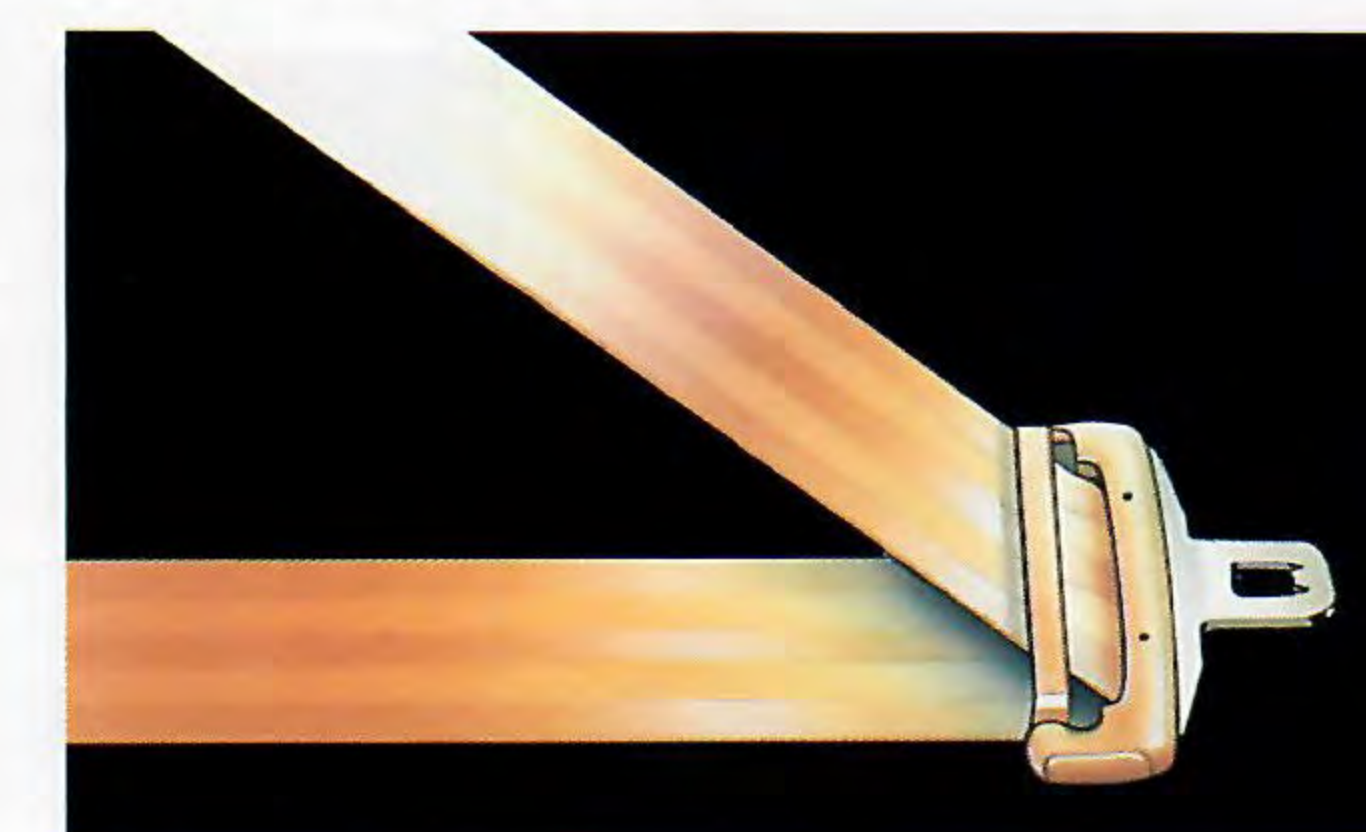
Standard child-protection rear door locks prevent accidental opening from the inside.



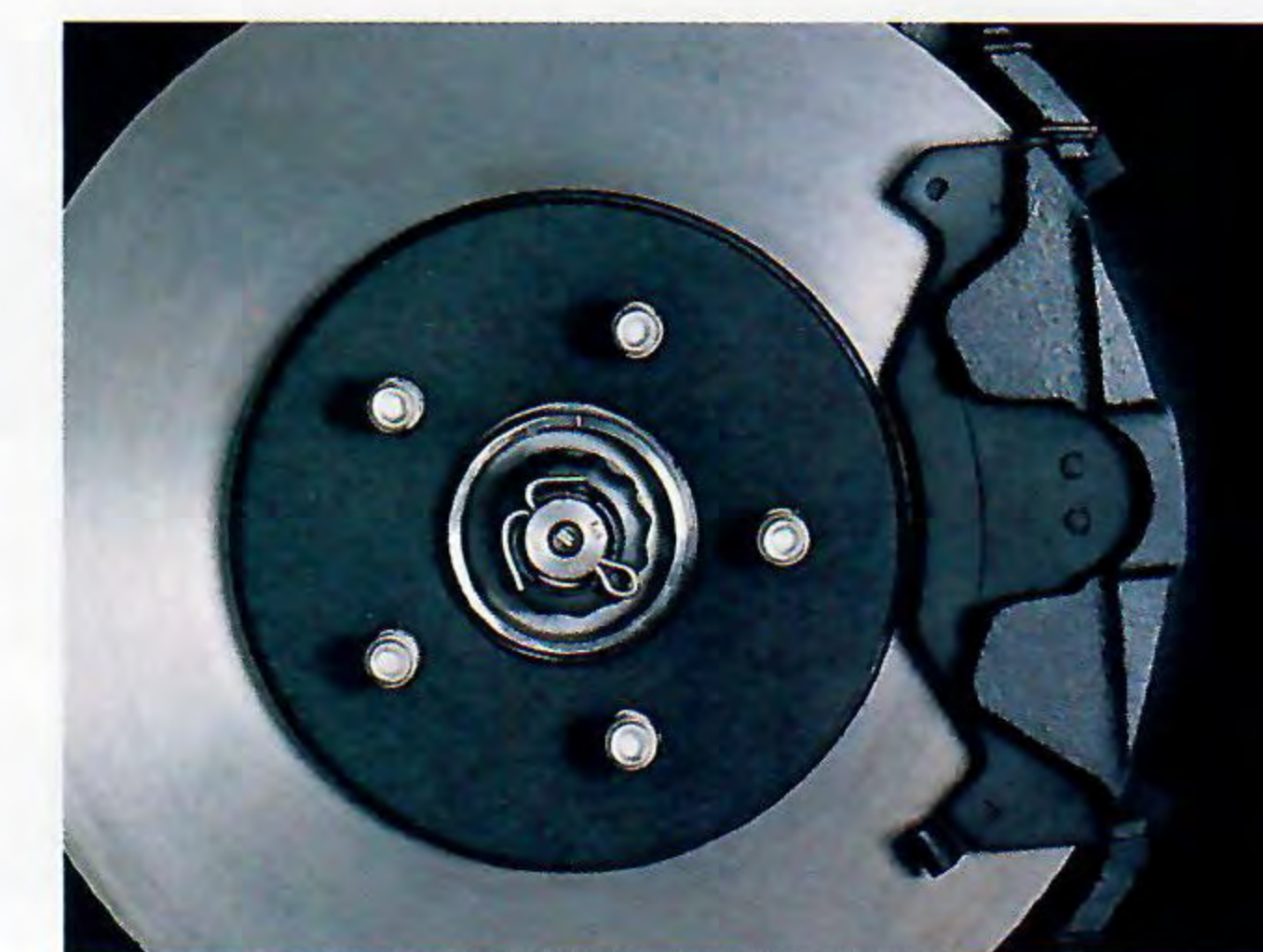
Simulated air bag deployment shown.

Driver-side air bag,* standard, utilizes impact sensors with gold electrical contact points for optimum conductivity and reliability. Dual electronic control circuitry ensures deployment even if one circuit should fail. A microprocessor-driven, self-diagnostic system checks circuit operations 30 times per second for maximum dependability.

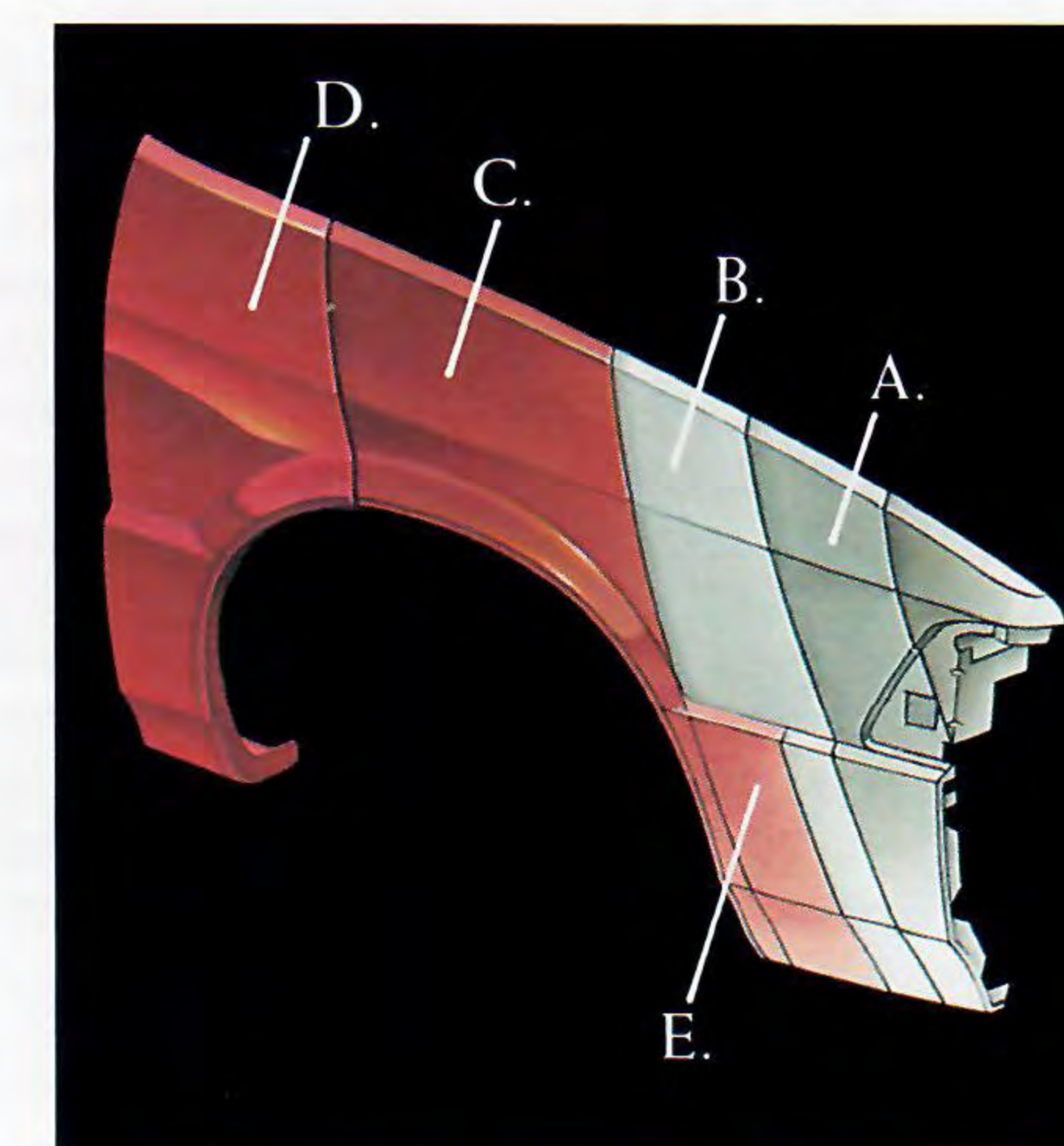
*Supplemental restraint system.



New cinching latchplate, used on Acclaim's front and rear three-point Unibelt restraint system, holds child seats or passengers securely in the proper position for increased safety.



Four-wheel antilock disc brakes, optional, automatically determine brake lockup through wheel speed sensors and oscillate braking pressure 15 times per second for maximum braking stability and safety. All Plymouth antilock brake systems are tested and certified to the highest standard for maximum reliability.



Plymouth's comprehensive anticorrosion measures begin with extensive use of corrosion-fighting galvanized steel in body panels.

A. Zinc-iron alloy-coated steel is zinc-phosphated as part of a nine-step pre-treatment which cleans and prepares the metal surface.

B. The entire body is fully immersed in a coating of corrosion-resistant epoxy electrocoat primer.

C. A two-stage base color coat is applied.

D. Two coats of clear are applied wet-on-wet over the base coat for an environmentally resistant mirror finish. (All body panels exposed to corrosives, except roof, are two-side galvanized/galvannealed.)

E. An antichip coating protects the lower bodyside against stone damage.



Mopar Diagnostic System allows Chrysler-Plymouth dealership technicians to use today's most sophisticated computer diagnostic procedures to quickly and accurately service your Plymouth Acclaim. (Late availability.)

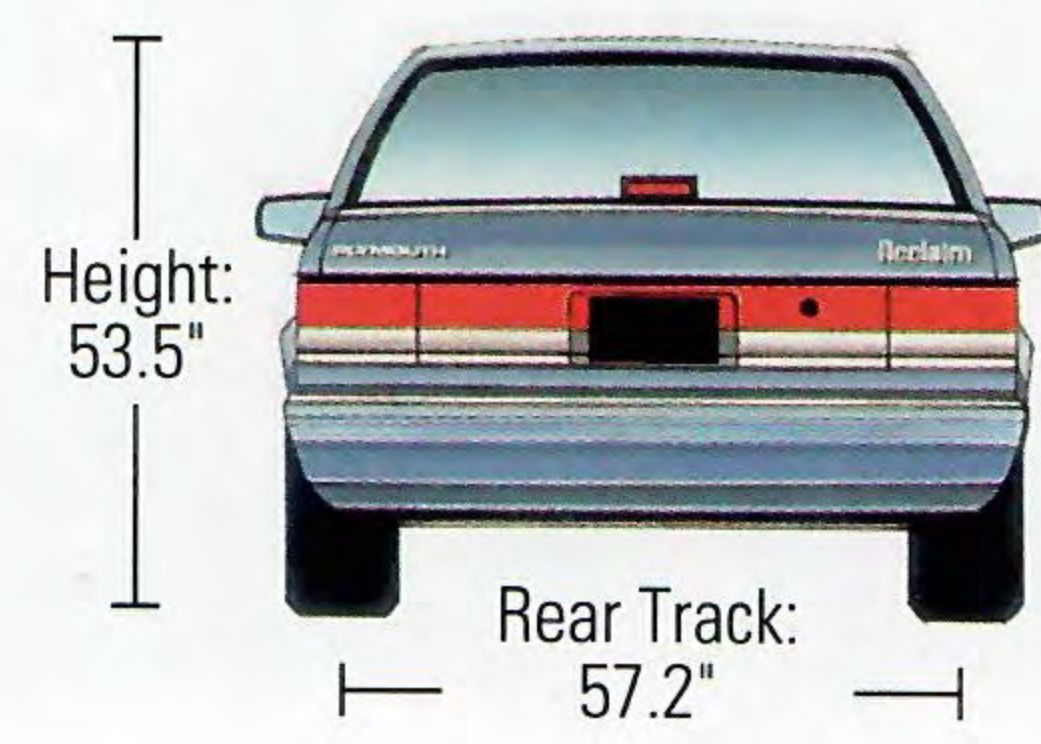
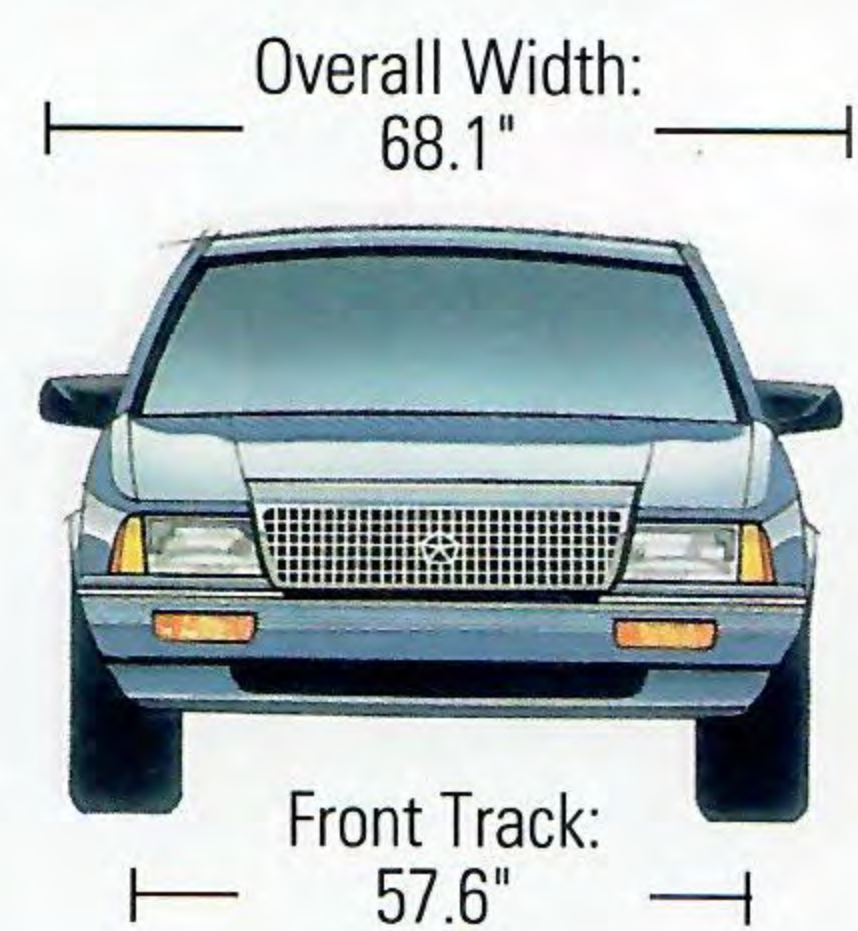
SAFETY LEADER



Plymouth Acclaim, shown in Black Cherry Pearl Coat.

*Supplemental restraint system. Simulated air bag deployment shown.

ACCLAIM DIMENSIONS



POWER TRAINS¹



2.5-LITER SOHC EFI DUAL BALANCE-SHAFT ENGINE

Acclaim's standard responsive 2.5-liter SOHC EFI four-cylinder engine includes electronic fuel injection (EFI) for optimal fuel metering and usage. The engine includes electronic ignition and voltage regulator, plus a smooth-running single overhead camshaft (SOHC), roller tappets, a torque rating of 135 lb-ft @ 2,800 rpm, and dual counterrotating balance shafts to help cancel vibration. Clutch/ignition safety interlock feature on five-speed transaxle permits engine starting only with clutch fully depressed.



3.0-LITER OHC V6 SMPI ENGINE

This smooth, powerful 3.0-liter OHC V6 SMPI engine is available on Acclaim with features such as overhead camshaft (OHC) and new sequential multipoint electronic fuel injection (SMPI). This engine develops a torque rating of 171 lb-ft @ 2,800 rpm. For maximum efficiency and performance, it's coupled with Plymouth's optional electronically controlled four-speed overdrive automatic transaxle. (Three-speed automatic transaxle available.) Shift safety interlock feature on either transaxle permits key removal only in Park.

ENGINE CHARACTERISTICS	2.5 LITER SOHC DUAL BALANCE-SHAFT ENGINE	3.0 LITER OHC V6 SMPI ENGINE
TYPE	4-cylinder SOHC EFI	6-cylinder sequential multipoint EFI
DISPLACEMENT	2.5-liter (153 CID)	3.0-liter (181.1 CID)
BORE & STROKE	3.44" x 4.09"	3.59" x 2.99"
TRANSAXLE AVAILABILITY	5-speed close-ratio manual overdrive (2.51 OTGR): standard 3-speed automatic ² (3.02 OTGR): optional ³	4-speed automatic ² (2.52 OTGR): optional 3-speed automatic ² (3.02 OTGR): optional ³
COMPRESSION RATIO	8.9:1	8.9:1
HORSEPOWER/SAE NET @ RPM	100 hp @ 4,800	141 hp @ 5,000
TORQUE/SAE NET @ RPM	135 lb-ft @ 2,800	171 lb-ft @ 2,800

OTGR—Overall top gear ratio.
¹Emissions controls and testing required at extra cost on all vehicles registered in California. Not available otherwise.
²Includes electromechanical lockup torque converter.
³Includes P195/70R14 tires (set of four).

DIMENSIONS

Head Room	Front38.4"	Rear37.9"
Leg Room	Front (max.)41.9"	Rear (min.)38.3"
Hip Room	Front51.7"	Rear52.0"
Shoulder Room	Front54.3"	Rear55.0"
Trunk Capacity (estimated)14.4 cu ft	
Turning Diameter—Curb-to-Curb (L/R)37.0/39.0	
Curb Weight with Standard Engine (estimated)2,784 lb	

TIRES

SIZE	TYPE (SET OF FOUR)	AVAILABILITY
P185/70R14	Steel-belted radial all-season touring tread design black sidewall	Standard
P195/70R14	Steel-belted radial all-season touring tread design black sidewall	Included with 3.0L V6 engine
P195/70R14	Steel-belted radial all-season touring tread design white sidewall	Optional with 3.0L V6
T125/70D14	Compact-type spare (one)	Standard
P185/70R14 P195/70R14	Matching-type; conventional-type spare (one)	Optional

MILEAGE*

23 EPA est. city mpg, 31 EPA est. hwy. mpg

*Mileage figures are for 1992 base Acclaim with standard engine and 5-speed manual overdrive transaxle.

TRAILER TOWING CAPACITY

ENGINE	TRANSAXLE	TOWING CAPACITY
2.5-liter four-cylinder	5-speed manual	1,000 lb
2.5-liter four-cylinder	3-speed automatic	2,000 lb
3.0-liter six-cylinder	4-speed automatic	2,000 lb

CUSTOMER-PREFERREDSM PACKAGES

ENGINES	TRANSAXLES	ACCLAIM			
		A	C	D	E
2.5L SOHC EFI	5-Speed Manual	A	C		
	3-Speed Automatic	A		D	E
3.0L SMPI V6	3-Speed Automatic			D	E
	4-Speed Electronic Automatic				E
PACKAGE CONTENTS					
Air Conditioning ¹			•	•	•
Deck Lid Release—Remote					•
Defroster ² —Rear window electric			•	•	•
Glass—Tinted			•	•	•
Mats—Floor: front and rear			•	•	•
Power Door Locks					•
Power Mirrors—Dual, heated					•
Power Windows					•
Radio—Four-speaker system			•	•	•
Speed Control—Electronic			•	•	•
Steering Column—Tilt			•	•	•
AVAILABLE OPTIONS					
Brakes—Four-wheel antilock disc ³		0	0	0	0
Console and Armrest Package (Requires bucket seats)			0	0	0
Defroster—Rear, electric ²		0	P	P	P
Interior Illumination Package ⁴ —Includes illuminated entry, dual illuminated visor vanity mirrors, map, cigar lighter and underhood lights and message center					0
Radio—AM/FM stereo and cassette			0	0	0
Radio—AM stereo ⁵ /FM stereo, premium cassette and Infinity I sound system					0
Seats—Cloth 50/50 front bench and split fold-down rear ⁶				0	0
Seats—Cloth front buckets and split fold-down rear ⁶				0	0
Seats—Cloth 50/50 front bench and fixed rear bench		0		0	0
Seat—Power, driver-side					0
Tire—Conventional spare		0	0	0	0
Tire—P195/70R14, white sidewall				0	0

• = Included in package. 0 = Optional. Some items may also be available in Customer-PreferredSM Packages. See Customer-PreferredSM Packages and "Available Options" for availability. P—Package only. See Customer-PreferredSM Packages for availability.
¹There are special engine cooling requirements for field-installed air conditioning. Failure to follow these requirements may invalidate warranty. See your dealer for details.

²Required on all passenger vehicles registered in New York State.
³When ordering with a V6 engine, four-speed automatic transaxle is required.
⁴Requires power door locks.
⁵Some AM stereo broadcasting may not be compatible with this radio.
⁶Includes premium sound insulation.

SAFETY FEATURES

- Air bag, driver-side
- Antitheft trunk lock
- Backup lights
- Brake fluid pressure loss warning light (also serves as parking brake indicator)
- Child-protection rear door locks
- Combination lap/shoulder belts for the driver, right front passenger, and outside rear passengers; lap belts for all others; includes provision for child seat tethers
- Double ball-joint rearview mirror mount
- Dual diagonal braking system with separate brake fluid reservoirs in the master cylinder
- Electric windshield washers and wipers
- Energy-absorbing bumper system
- Energy-absorbing front seatbacks
- Energy-absorbing instrument panel and sun visors
- Fade-resistant front vented disc brakes
- Front seat head restraints
- Glare reduction measures for instrument panel, steering wheel, windshield wipers, windshield header and roof
- Hazard warning flasher system
- Headlight and wiper circuit breakers with automatic reset
- Ignition and steering column lock
- Impact-actuated fuel supply shutdown relay
- Inside and outside rearview mirrors
- Interlocking door latches
- Key left in ignition warning
- Non-override door locks (except driver's door)
- Recessed inside door release handles
- Reinforced windshield header and roof
- Resilient window crank knobs
- Safety glass
- Safety-Rim wheels
- Seat belt reminder system
- Side door beams
- Side marker lights and/or reflectors
- Squeeze glove box latch
- Supplemental center high-mounted stoplight
- Turn signals with lane-change feature and flashing front side marker lights

FUNCTIONAL

Air Bag—Driver-side supplemental restraint system	S
Alternator—90-ampere	S
Antichip Protective Coating—Lower body	S
Battery—Heavy-duty, maintenance-free; with test indicator	S
Brake—Parking: foot-pedal-operated	S
Brakes—Dual diagonal, vented disc front, self-adjusting drum rear; power-assisted	S
Brakes—Four-wheel power-assisted disc with antilock feature (ABS)	O
Coolant Overflow Reservoir	S
Electronic Ignition, Voltage Regulator, and Fuel Injection	S
Emissions Controls and Testing—Required at extra cost on all vehicles registered in California; not available otherwise	O
Engine—2.5-liter SOHC EFI dual balance shaft	S
Engine—3.0-liter OHC V6 SMPI	O
Exhaust System—Aluminized steel	S
Front-Wheel Drive	S
Fuel Tank—16-gallon; with curbside fuel filler door	S
Jack—Scissors-type	S
Steering—Rack-and-pinion, fast-ratio (16:1), precision-feel; power-assisted	S
Suspension—Front gas-charged position-sensitive struts and solid antisway bar; rear beam axle with trailing arms, tubular antisway bar, and gas-charged shock absorbers	S
Tire—Spare: compact, limited service, T125/70D14	S
Tire—Spare: conventional, P185/70R14 or P195/70R14	O
Tires—P185/70R14 steel-belted radial all-season touring tread design black sidewall low rolling resistance (set of four)	S
Tires—P195/70R14 steel-belted radial all-season touring tread design black sidewall low rolling resistance (set of four)	O ¹
Tires—P195/70R14 steel-belted radial all-season touring tread design white sidewall low rolling resistance (set of four)	O
Transaxle—Five-speed close-ratio manual with overdrive	S
Transaxle—Three-speed TorqueFlite automatic	O
Transaxle—Four-speed automatic computer-controlled	O
Wheel Covers—Deluxe: 14-inch (set of four)	S
EXTERIOR	
Bumpers—Energy-absorbing; color-keyed, with protective rub strips	S
Corrosion Protection—Extensive use of galvanized steel	S
Fuel Filler Cap Tether	S
Headlights—Halogen: aerostyle	S
Hood—Counterbalanced	S
Mirrors—Dual manual remote control: black	S
Mirrors—Dual power remote, heated	P
Moldings—Door center pillars (black); upper door frame and belt (bright/black); windshield and rear window (black)	S
Moldings—Bumper protective rub strip extensions, grooved body color with bright edge	S
Moldings—Narrow bodyside, body color with bright edge	S
Stripes—Bodyside: paint, two-color	S
INTERIOR	
Acoustical Package—Insulation: body sound	S
Air Conditioning ² —Manual temperature control: with bi-level ventilation	P
Armrest—Center console-mounted: storage bin and dual cup holder for rear passengers included	O
Armrests—Door-mounted: two front, two rear	S
Ash Receivers—One front, two rear	S
Carpeting—Passenger compartment: color-keyed	S
Carpeting—Trunk floor and sidewall	S
Cellular Phone—Visorphone ³ , dealer-installed ³	O
Cellular Phone—Portable, dealer-installed ³	O
Chimes—Warning: fasten seat belt, headlights on, key in ignition	S
Cigar Lighter	S
Clock—Electronic digital (integral with radio)	S
Coat Hooks—rear (two)	S
Console—Full floor: with cassette storage, storage bin and cup holders	O ⁴
Cubby Bin—Instrument panel; open: flopped	S

Deck Lid Release—Cable-operated remote control; defeat mechanism located in trunk	P
Defroster—Rear window: electric (required on all passenger vehicles registered in New York State)	O
Demisters—Side window	S
Door Locks—Power	P
Door Release Handles—Interior: easy-open, with plunger type lock/unlock system	S
Floor Mats—Front and rear: carpeted	P
Glass—Tinted, all windows	P
Glove Box—Lockable: includes storage for cassette tapes	S
Head Restraints—Front: two-way adjustable	S
Heater and Defroster—With bi-level ventilation and side window demisters	S
Hood Release—Inside	S
Horn—Dual-note	S
Instrument Cluster—Electromechanical analog speedometer with secondary metric scale; odometer, trip odometer; gauges for electrical system voltage, engine coolant temperature, and fuel level; warning lights for brake system failure or parking brake on, check engine, check gauges, fasten seat belts, low fuel, low oil pressure, air bag, and ABS warning (if equipped)	S
Keys—Reversible: double-bitted, with valet feature	S
Lights—Ash receiver, dome, front and rear door switches for dome light, glove box, trunk	S
Light Package—Cigar lighter, map light, underhood, illuminated entry, dual illuminated vanity mirrors	O
Locks—Interior rear doors: child protection	S
Message Center—Graphic: includes warning lights for door ajar, headlight out, low windshield washer fluid, stoplight out, taillight out, deck lid ajar	O
Mirror—Rearview day/night	S
Mirrors—Dual visor vanity; driver-side, covered	S
Multifunction Control Lever—Mounted on steering column: includes controls for turn signals with lane-change feature, headlight dimmer, and day/night flash/pass feature; windshield wiper/washer	S
Radio—AM/FM stereo: electronically tuned; Dynamic Noise Reduction ⁵ ; two front speakers, integral digital clock	S
Radio—AM/FM stereo: electronically tuned; Dynamic Noise Reduction ⁵ ; cassette tape player with automatic reverse; integral digital clock	O
Radio—Four-speaker system	P
Radio—AM stereo ⁶ /FM stereo, premium cassette, Dynamic Noise Reduction ⁵ and Infinity I Sound System, integral digital clock	O
Seat Belts—Three-point Unibelt, with automatic retractor and child-resistant cinching latchplate on front and rear outboard seats, lap belts at all other positions: color-keyed	S
Seats—Front: cloth with vinyl trim low-back bucket with reclining seatbacks and two-way adjustable head restraints	S
Seats—Front: cloth with vinyl trim 50/50 split bench with individual armrests ⁷	O
Seats—Power, left side of 50/50 split bench or driver-side bucket	O
Seats—Rear: cloth with vinyl trim bench	S
Seats—Rear: cloth with vinyl trim folding seatback, split 55/45; lockable latches	O
Speed Control—Electronic	P
Steering Column—Tilt	P
Steering Wheel—Luxury with air bag	S
Supplemental Stoplight—Center high-mounted	S
Visors—Dual with vanity mirrors, includes sliding cover, driver's side	S
Windows—Power	P
Windshield Wipers—Deluxe; with variable intermittent wipe feature	S

S= Standard. P= Included in Customer-PreferredSM Package listed above. O= Optional. Available only when corresponding Customer-PreferredSM Package is ordered.

¹ Included with 3.0-liter V6 engine.

² There are special engine cooling requirements for field-installed air conditioning. Failure to follow these requirements may invalidate warranty. See your dealer for details.

³ OKI[®] Telecom manufactures, services and is the warrantor of cellular phone systems available on selected Chrysler Corporation vehicles. Visorphone is a registered trademark of Cartell, Inc.

⁴ Console must be specified when ordering automatic transaxle or shift lever will be steering column-mounted.

⁵ Dynamic Noise Reduction is a trademark of National Semiconductor Corporation.

⁶ Some AM stereo broadcasting may not be compatible with this radio.

⁷ Includes instrument panel-mounted cup holders/ashtray. Not available with manual transaxle.



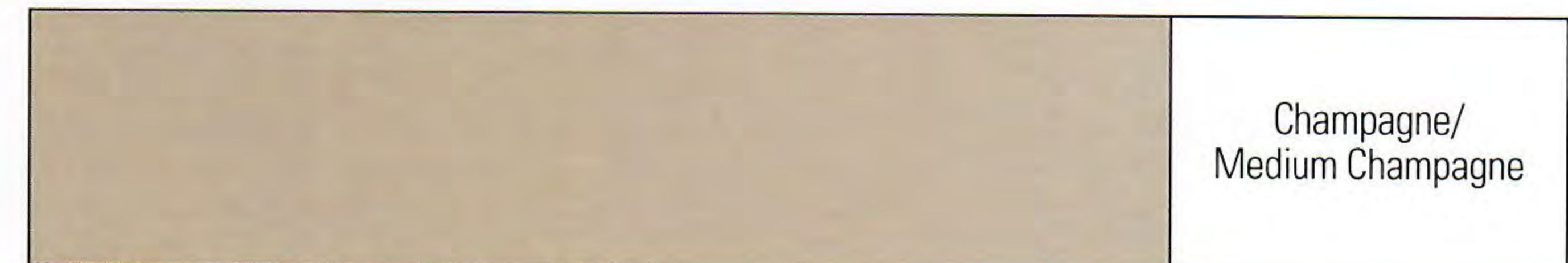
Claret Red Pearl Coat*

Crimson Red
Medium Quartz
Champagne/
Medium Champagne



Black Cherry Pearl Coat

Crimson Red
Champagne/
Medium Champagne



Light Champagne Metallic Clear Coat*

Champagne/
Medium Champagne



Sapphire Blue Satin Glow Clear Coat*

Slate Blue



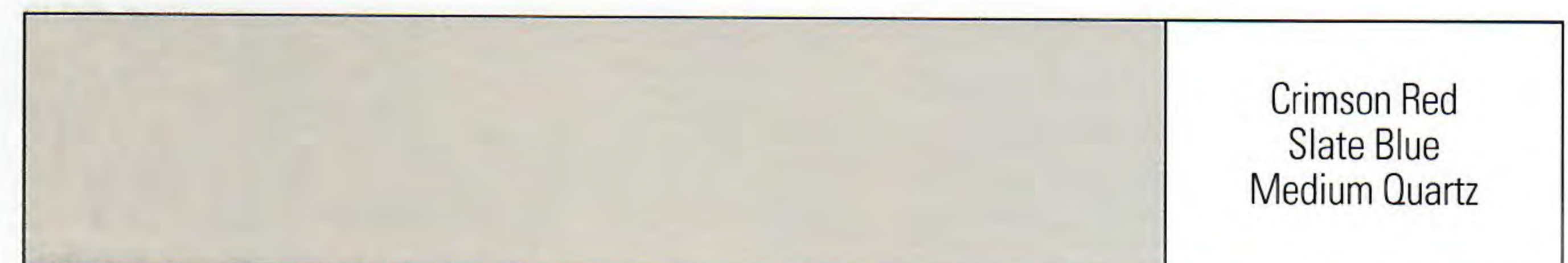
Light Blue Satin Glow Clear Coat

Slate Blue



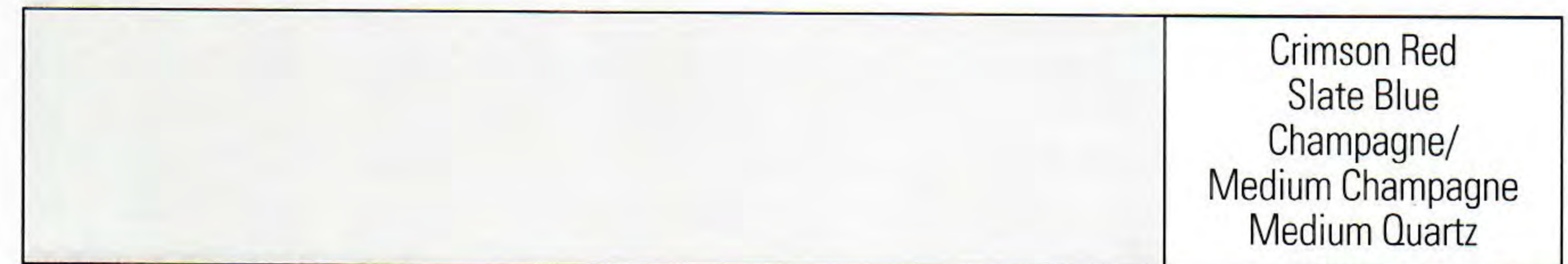
Aqua Pearl Coat

Medium Quartz



Bright Silver Metallic Clear Coat*

Crimson Red
Slate Blue
Medium Quartz



Bright White Clear Coat

Crimson Red
Slate Blue
Champagne/
Medium Champagne
Medium Quartz



Black Clear Coat

Crimson Red
Champagne/
Medium Champagne
Medium Quartz

*Extra cost.
All exterior colors have a Clear Coat finish.
Note: Due to printing limitations, the colors shown will vary slightly from actual hues.
See your dealer for accurate color chips.

Chrysler Corporation Limited Warranty Protection
Every Chrysler Corporation vehicle comes with the protection of a Chrysler Corporation Limited Warranty. See your dealer for details.



MOPAR parts are engineered by Chrysler Corporation for use in your new Plymouth Acclaim. When replacement is necessary, be sure to specify MOPAR parts. Used by professional automotive technicians worldwide.

Chrysler Cellular Systems OKI[®] Telecom manufactures, services and is the warrantor of the Visorphone[®] and Portable phone products that are available on selected Chrysler Corporation vehicles. See your dealer for a copy of the limited warranties. Restrictions apply. [®]Visorphone is a registered trademark of Cartell, Inc.

Consider Leasing More consumers are considering leasing as an alternative to buying. Leasing a new Plymouth Acclaim usually involves a small security deposit and a first month's lease payment. Monthly payments frequently are less than financing a new car purchase. Ask your dealer for details.



Chrysler Credit Financing Chrysler Credit offers a variety of finance programs that will help make your new Plymouth Acclaim even more affordable. These flexible finance and lease programs can be tailored to suit your budget and your lifestyle. They include Gold Key Lease, Gold Key Plus, College Graduate Plans, Retail Financing, and other special payment plans. Ask your salesperson for details.

Chrysler Purchase Assistance Program for the Physically Challenged Cash reimbursements of up to \$500 are available for qualified adaptive driving devices on 1992 Chrysler Corporation cars and trucks. For further information, contact your dealer or the PHYSICALLY CHALLENGED RESOURCE CENTER at 1-800-255-9877.

All product illustrations and specifications are based upon current information at the time of publication approval. Although descriptions are believed correct, complete accuracy cannot be guaranteed. Chrysler Corporation reserves the right to make changes from time to time, without notice or obligation, in prices, specifications, colors and materials, and to change or discontinue models. See your dealer for the latest information.

Plymouth and MOPAR are registered trademarks, and Acclaim is a trademark of Chrysler Corporation.

Buckle up for safety.



ADVANTAGE:PLYMOUTH

