

1979 PLYMOUTH

HORIZON

NOW THERE'S EVEN MORE CONFIDENCE ON THE HORIZON.



HORIZONS UNLIMITED.

An overwhelming success. That's the response Horizon continues to get since taking to America's highways.

Small wonder. Horizon showed American drivers that a car can be smart and roomy, while relating to the road in a way that makes a lot of sense.

Now look again. Here comes a new Horizon: the sporty TC3 hatchback. With the same solid engineering...The same assuring front-wheel drive roadability... plus special styling that says "NOW."

In addition to the many standard features found in each Horizon, you can

choose from a host of "mix and match" interior and exterior options that add to Horizon's appearance and to your comfort. Inside and out, you can specify the Horizon just right for you.

Both models offer options like... Premium exterior and interior trim. Sport and Rallye Packages are available on the new Horizon TC3. Even a "woody" look can be added to the 4-door Horizon.

Whether you choose the popular 4-door model or the all-new sporty 2+2 hatchback, your Horizons are unlimited.

THAT'S IMAGINATION. THAT'S PLYMOUTH.

Horizon TC3 Hatchback with Sport Two-Tone Paint Package.

Horizon 4-door Hatchback with Premium exterior trim and Classic Two-Tone Paint Package.



DISCOVER A NEW HORIZON.

They say that success breeds success. If that's the case, then check out the bright new star added to the Horizon lineup: the sporty TC3 Hatchback.

Right from the start, you get lots of extras standard on our new Horizon TC3 ... like dual body-side pinstripes, bright moldings, wheel trim rings, electric rear window defroster, AM/FM radio, wood-grain instrument panel applique, luxury



Horizon TC3 Hatchback.

steering wheel, custom vinyl seats and door-trim panels to name a few.

No question about it, our little sport delivers the goods. In other ways, too. Horizon's handy hatchback liftgate provides easy access to luggage and such. And, to expand carrying capacity, the back seat folds down quickly. There's even a standard electric liftgate release for quick openings.

The TC3's aerodynamic styling not only looks great, but helps cut down on wind resistance which improves fuel economy.

And whatever the season hands you—rain, snow or wind—our new Horizon can help you handle the road with confidence. Front-wheel drive—with the engine weight over the drive wheels—rack-and-pinion steering, 165/75 WSW radial tires and a "tuned" suspension system with front and rear anti-sway controls provide remarkable traction.

Our Sport Appearance Package option has this plus a rear spoiler, special blackout exterior treatment and enough good stuff to make it a standout.

THAT'S IMAGINATION. THAT'S PLYMOUTH.

Horizon TC3 Hatchback with Sport Appearance Package.



THE HORIZON THAT PROVED IT COULD HANDLE IT.

Snow, sleet and rain couldn't stop the hardy Horizon. Neither could the competition.

Our 4-door Horizon is still coming on strong with these great road-handling features. Front-wheel drive. Rack-and-pinion steering. Radial tires.



Horizon 4-door Hatchback with Custom exterior trim and Classic Two-Tone Paint Package.

And a "tuned" suspension system with front and rear anti-sway control.

And Horizon can handle it on a shoestring. With its standard 4.7-litre engine teamed up to a 4-speed, floor-mounted manual transmission.

As for handling people and gear, the Horizon 4-door Hatchback does that with finesse. The luggage area holds 10.5 cubic feet, expanding to a spacious 36.1 cubic feet with the rear seat folded down. Just imagine... enough space to pack two golf bags, one men's two-suiter, three ladies' overnight suitcases, two

train cases, six shoe boxes and a cuddly teddy bear. Rear side doors and easy-up liftgate make all this space readily accessible.

In addition, the Horizon 4-door uses 170 pounds of high-strength steel. This extensive use results in less weight for improved fuel economy.

Horizon hands you the comfort, convenience and confidence you want in a new car.

THAT'S IMAGINATION. THAT'S PLYMOUTH.

Horizon 4-door Hatchback with Custom exterior trim and sport stripes.



FIND YOUR OWN HORIZON.

Horizon delivers outstanding engineering, comfort and style. Even our most affordable 4-door Horizon has a long list of standard features...AM radio, cigarette lighter, electric rear window defroster, whitewall tires, front door dome-light switch, vinyl body-side protective moldings and bright trim.

Drive Horizon your own way by choosing from many available options.



Horizon 4-door Hatchback.

For example, you can put a little extra into your 4-door Horizon exterior by selecting from one of these attractive optional packages: Custom, Premium or Premium Wood-Grain.

Take your choice of optional Horizon interiors. Handsome Custom trim or luxurious Premium trim make Horizon an even plusher experience.

Horizon can fit your own requirements even more closely with a host of other options. Want more pleasure from your driving? Add power steering, power

brakes or automatic transmission. Stay cool with Horizon's rapid-cooling air conditioning.

Swing along with an optional AM/FM radio or AM/FM stereo radio. For increased carrying versatility, Horizon 4-door's optional roof rack and dealer-supplied optional adaptors can handle skis, bicycles, luggage, or even a canoe.

Go ahead...mix and match to create a Horizon just right for your lifestyle.

THAT'S IMAGINATION. THAT'S PLYMOUTH.

Horizon 4-door Hatchback with Premium wood-grain trim.



NOW, PICK OUT YOUR INTERIOR.

Horizon's superb design provides extra room inside. And, extra room means extra comfort. Enjoy this superb inner space even more by selecting your Horizon interior the way you want it. Besides the standard interior trim level, there are more luxuriously appointed optional interior trims available to mix or match with your choice of Horizon's exteriors. And for that final touch, consider these options: color-keyed seat belts and floor mats plus cargo compartment carpeting (standard on TC3) with extra sound insulation.

4-Door optional Premium Interior Package

Luxurious cloth-and-vinyl seats, with adjustable headrests and passenger-side reclining front bucket seat-back, provide optimum comfort for front driver and passenger. Premium door trim panels with carpeted inserts, long "hockey-stick" armrests, luxurious wood-grained steering wheel and instrument panel, visor vanity mirror, locking glove box, shift lever console, and knit cloth headliner complete the package contents. The available colors are blue, teal green, red, cashmere or black.



4-Door optional Custom Interior Package

This handsome interior trim package includes Custom-level bucket seats in box calf vinyl. Custom door trim panels with carpeted inserts, simulated woodgrain on the instrument panel, locking glove box, and a cloth-covered headliner. Available in blue, teal green, red, cashmere or black.

TC3 standard Custom all-vinyl trim

Available in blue, red, cashmere or black. Or, select white seats with blue, red, cashmere or black interior accents.



TC3 and 4-Door optional Custom cloth-and-vinyl seats

Handsomely textured high-back bucket seats in cloth-and-vinyl, shown above are available in the TC3 and also available with the Custom Interior Package on the 4-door hatchback. Colors available for the 4-door: blue, teal green, red or cashmere; for the 2+2 hatchback: blue, red or cashmere.



TC3 optional Premium Interior Package

Push Premium Package features all-vinyl, low-back bucket seats with adjustable headrests and reclining passenger seat-back. Plus a shift-lever console and a passenger-side vanity mirror.

Also available at extra cost are cloth-and-vinyl bucket seats which are illustrated above, left. Available in blue, red, cashmere or black.



TC3 optional plaid cloth-and-vinyl seats

Colorful plaid cloth-and-vinyl bucket seats with integral head restraints. Available in yellow/black or red/black plaids. These plaid seats are available only with selected exterior colors.

4-Door fold-down rear seat

The rear seat of the 4-door Horizon quickly folds down to stow more gear than you'd guess in a car this size. Expands luggage area from 10.5 cu. ft. to 36.1 cu. ft.



Security panel

Standard in the 4-door Horizon is a fully trimmed, fold-down security panel which guards luggage from prying eyes. Panel hinges up out of the way when loading or unloading the cargo area.



4-Door standard all-vinyl trim

Full bucket seats are individually adjustable to suit the tall or short passengers of your Horizon 4-door hatchback. Choose from cashmere or black vinyl.

TC3 fold-down rear seat

Increased storage area is available—up to 33.8 cu. ft.—by folding rear seat down (10.7 cu. ft. with rear seat up and optional tonneau cover). Handy hatchback makes cargo area readily accessible.

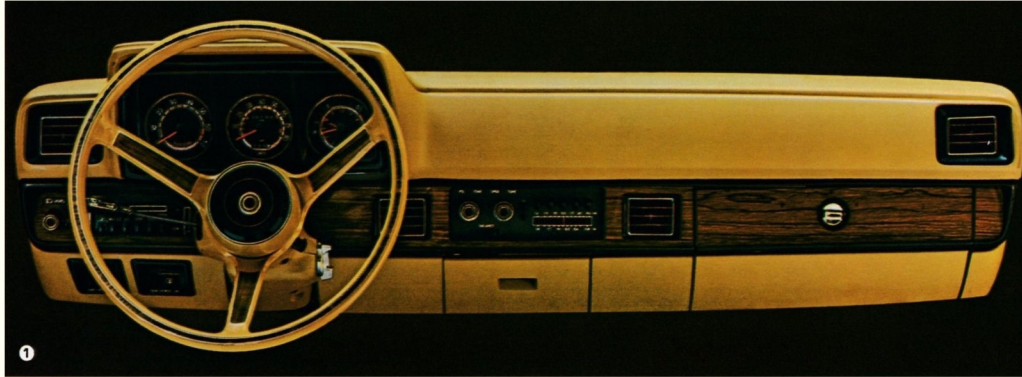


Optional tonneau cover

Choose the handy tonneau cover for the storage compartment of your Horizon TC3. It attaches behind the rear seat, ready to pull out to cover your gear, or rewind automatically for accessibility.

PERSONALIZE YOUR HORIZON.

1. Among the many standard luxury touches found on the Horizon TC3 Hatchback are the eye-appealing wood-grain applied instrument panel and 3-spoke luxury steering wheel (optional on the 4-door). Also shown is optional rapid-cool air conditioning, ear-appealing AM/FM stereo radio and an electric clock with trip odometer.



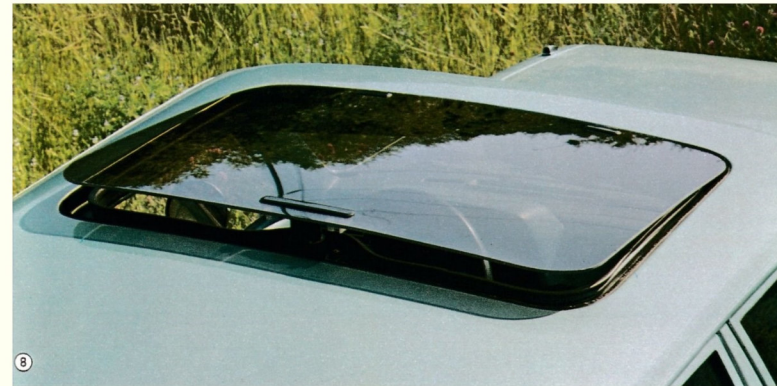
2, 3, 4, 5. Enlarge your Horizon with an optional roof-mounted luggage rack. The rack has a capacity of 450 lbs. on the 4-door, and 125 lbs. on the TC3 yet is easily demountable. Horizon 4-door shown with optional bicycle adapter (2), ski adapter (3), and all-purpose luggage rack (4) and the Horizon TC3 Hatchback luggage rack (5). All optional special equipment, adapters and luggage covers are available separately from your Plymouth dealer.



6. Keep a clear-eyed view with the standard rear electric window defroster and optional washer/wiper (4-door only). They'll help prevent buildup of fog, frost and snow.

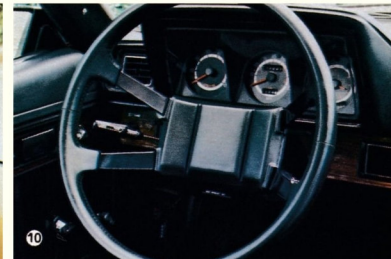


7. A beautiful coverup... optional molded console surrounds automatic transmission shift lever. In addition, you may order the optional forward-mounted roll-top storage module—perfect for holding sunglasses, maps, etc. Consoles also available with manual transmission and included in TC3 Premium Interior Package.



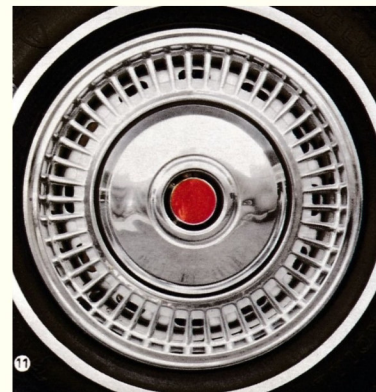
8. Let the sunshine in... sporty optional Tri-Lite with tilt-up, removable tinted glass panel opens your view to the skies.

9. Change your side view as needed with optional remote-control chrome mirrors. Available, remote left or remote left and right. (TC3 sport styled mirror shown.)



10. An optional deep-dish, 4-spoke sport steering wheel with a simulated black leather rim gives you hands-on sport. (Included in the TC3 Rallye Equipment Group and Sport Appearance Packages.) (TC3 only.)

11. Optional stainless-steel wheel covers add a stylish touch. (Standard with Premium and Wood-Grain Premium Exterior Packages.)



12. Optional cast-aluminum road wheels help make your Horizon more distinctive.

YOUR KIND OF HORIZON.

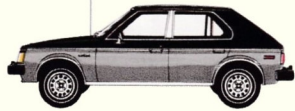


Basic and beautiful 4-door Horizon
All the prime engineering features that help Horizon handle the road in a smooth and sure way are here... front-wheel drive, transverse engine, rack-and-pinion steering, radial tires and "tuned" suspension.

Horizon offers you a selection of super-sharp optional Exterior Appearance Packages. From the attractive base Horizon models, you can move up to more luxurious or sporty packages. And remember, Exterior and Interior Packages can be mixed 'n matched to add at your kind of Horizon.



Custom 4-door exterior*
Set your sights on this snappy Horizon exterior—the optional Custom Exterior Package. The offerings are bright and beautiful, and include sill, drip trough and wheel-opening moldings, plus hood and fender moldings.



Premium 4-door exterior*†
Brighten up your Horizon even further with the optional Premium Exterior Package. Included are bright moldings on hood, fender, drip trough, wheel lip, sill, belt, upper door frame, body side and liftgate. Plus deluxe wheel covers to complete the sparkle.



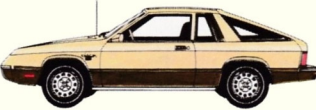
Premium 4-door exterior package with sport stripe
Yearn for the fun of a sporty car...but like the convenience of a 4-door? The colorful sport stripe trim option with a blackout lower body adds that little extra style appeal.



Premium 4-door wood-grain exterior†
For more elegance outside, choose the optional Premium Wood-Grain Package with wood-grain body side and lower liftgate panel applique, extra body moldings (included in the Premium Exterior Package previously described), and deluxe wheel covers.



The New Horizon TC3
A sporty way to start the Horizon 2+2 hatchback series. Sleek aerodynamic styling, bright trim, sport mirror, wheel trim rings. Plus front-wheel drive, transverse engine, rack-and-pinion steering. Just some of the features that add to this model's good sportsmanship.
†Shown with optional Rallye wheels.

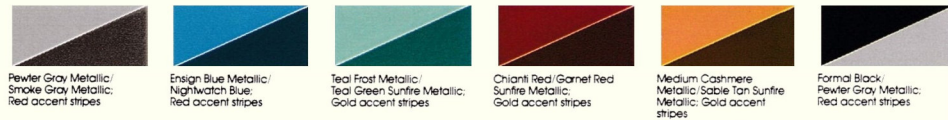


Premium TC3 exterior*†
The optional Premium Exterior Package sets off our new Horizon's sleek styling with bright moldings along the side windows, louvered quarter window appliques, bright and black rub strips, front and rear; plus deluxe wheel covers.



TC3 Sport Package
This option includes body accents with blackout lower, TC3 decals, black moldings, mirrors and accents, louvered quarter window appliques, painted Rallye wheels, and a rear spoiler. Inside, a black 4-spoke steering wheel and Rallye instrument cluster with tach, clock and trip odometer. (Shown with optional cast aluminum road wheels.)

Optional 4-door Classic Two-Tone Paint Package colors:



TC3 Sport Two-Tone Paint Package colors:



TC3 Sport Package colors:



Due to occasional printing irregularities, the colors shown may vary slightly from actual hues. See your Plymouth Dealer for accurate color chips.

HORIZON READY-TO-ORDER FORM.

MODELS

(Refer to Pg. 14)

- Horizon 4-door
- Horizon 4-door w/Custom Exterior Package
- Horizon 4-door w/Premium Exterior Package
- Horizon 4-door w/Premium Wood-Grain Package
- Horizon TC3
- Horizon TC3 w/Premium Exterior Package
- Horizon TC3 w/Sport Package

ENGINES

- 104.7 CID (1.7L) 4-cylinder (standard)
- 104.7 (1.7L) 4-cylinder with California required Emissions System

TRANSMISSIONS

- 4-speed manual, fully synchronized (standard)
- Automatic (optional)

Interior Packages (Refer to Pgs. 10 & 11)

- Custom Interior Package (4-door)
- Premium Interior Package (4-door)
- Premium Interior Package (TC3)

Other Optional Packages

- Light Package
Turn-signal indicators, fender-mounted (4-door) • Map/courtesy light • Glove box light • Ash receiver light • Luggage compartment light • Ignition light with time delay • Headlights-on warning buzzer
- Popular Equipment Group
Power steering • Light Package • Remote-control mirror—left (4-door) • Dual horns • Wheel trim rings (standard TC3) • Dual sport-styled remote-control mirrors (TC3) • Day/night inside mirror
- Rallye Equipment Group (TC3)
Rear deck spoiler • Rallye wheels painted with bright hubs, lug nuts and trim rings • 185/70R13" OWL Aramid-belted radial tires • Sport suspension • Rallye instrument cluster with tachometer, clock and trip odometer • Sport steering wheel • Horizon TC3 name decals

- Two-Tones (Refer to Pg. 14 for colors)
- Classic Two-Tone Paint Package (4-door)
- Sport Two-Tone Paint Package (TC3)

The List of Options

- Air conditioning (tinted glass recommended)
- Battery—430-amp. Maintenance-Free (recommended for extreme cold areas)
- Bumper protective rub strips—front and rear (TC3)
- Bumper guards—front and rear (4-door)
- Cargo Compartment Dress-Up and Sound Package
- Clock—electric and trip odometer (included with Rallye instrument cluster)
- Color-keyed seat belts with automatic tension-reliever release
- Front storage console
- Shift lever console (includes auxiliary storage and rear ashtray) (included in Premium Interior Package on TC3)
- Cover, roll-up tonneau—rear (TC3)

- Emissions Control System & Testing (required on all vehicles registered in California)
- Flip-out quarter window (TC3) (not available with quarter window applique)
- Gas cap, locking
- Tinted glass—all windows (recommended with air conditioning)
- Tinted glass—windshield
- Clear glass—all windows (use with air conditioning if tinted glass not desired)
- Horns, dual (included in popular equipment group)
- Lock, glove box (4-door—included in Custom Interior and Premium Interior Package)
- Luggage rack, roof
- Mats—accessory floor—color-keyed (front mats have carpet inserts)
- Day/night inside mirror (included in popular equipment group)
- Remote control mirror—left (4-door— included in popular equipment group on 4-doors)
- Remote control mirror—left and right (4-door)
- Dual aerodynamic sport styled, outside remote left and right mirrors (included in Sport Package and popular equipment group on TC3)

- MOLDINGS & STRIPES:
 Black vinyl body side (TC3)
- Upper door frame (4-door—included in Premium Exterior and Premium Wood-Grain Package)
- Drip rail (4-door—included in Custom Exterior, Premium Exterior and Premium Wood-Grain Packages)
- Belt, bright (4-door—included in Premium Exterior and Premium Wood-Grain Package)
- Sill (4-door—included in Custom Exterior, Premium Exterior and Premium Wood-Grain Packages)
- Wheel lip (4-door—included in Custom Exterior and Premium Exterior Packages)
- Side tape stripe—flat black paint below tape—multi-color (4-door)

- Power steering (included in popular equipment group)
- Power disc brakes—front
- AM/FM radio (4-door)
- AM/FM stereo radio speaker, rear-seat—single (TC3)
- Rallye instrument cluster, with tachometer, clock and trip odometer (TC3) (included in Sport Package and Rallye equipment group)
- Sport steering wheel (included in Sport Package and Rallye equipment group) (TC3)
- Spoiler—rear aerodynamic (TC3) (included in Sport Package and Rallye equipment group)
- Sport suspension with heavy-duty springs and shocks front and rear. Large front sway bar and additional rear sway bar—(TC3)
- Steering wheel, luxury 3-Spoke (4-door included in Premium Interior Package)
- Suspension—Heavy-duty with front and rear heavy-duty springs, heavy-duty rear shock absorbers (4-door)
- P165/75R13" (Glass-Belted Radial) WSW (4-door)
- P175/75R13" (steel-belted radial) WSW
- P165/75R13" (steel-belted radial) WSW
- P185/70R13" (Aramid-belted radial) OWL (TC3)
- Transmission—automatic
- Tri-Life—fit-up removable glass roof panel
- Undercoating
- Cast aluminum road wheels
- Wheel covers—deluxe (included with Premium Exterior and Premium Wood-Grain Packages)
- Trim rings (4-door—included in popular equipment group)
- Bright Rallye hubs and bright lug nuts and argent colored wheels
- Body-colored Rallye wheels include bright hub, lug nuts, and trim rings. Available in six colors. (included in Sport Package and Rallye equipment group)
- Wiper/washer, rear (4-door)

- O Indicates items standard on TC3

Standard equipment (4-door and TC3)

- Front-wheel drive
- 104.7-cu.-in./1.7L 4-cylinder engine
- 4-speed synchronized manual transmission
- Rack-and-pinion steering
- "Iso-Strut" coil spring front suspension with anti-sway control
- Front disc brakes
- Argent styled sport road wheels
- Electronic Ignition System
- Diagnostic plug for engine electrical system
- Cigarette lighter
- Two-speed electric windshield wipers and washers
- Ammeter
- Heater and defroster
- Inside hood release
- Dome light with right and left front door switch
- Rear window defroster (electric)
- Steering column multifunction control stalk
- Color-coordinated interior
- Door trim panels with front and rear armrests (Custom level on TC3)
- Sun visors
- Coat hooks
- Molded headlining (cloth covered, TC3)
- Cut-pile color-keyed carpeting
- Full-volume foam vinyl-covered high-back bucket seats (Custom level on TC3)
- Bin-type glove box
- Rear bench seat with fold-down back feature
- Three-spoke steering wheel
- Upper-level ventilation
- Easy storage access liftgate
- Extensive use of galvanized steel for added corrosion resistance

Additional 4-door standard equipment

- AM radio
- Folding rear security shelf
- Body-side vinyl molding
- Bumper rub strips
- Roll-down rear door windows
- 155/80 glass-belted radial tires

Additional TC3 standard equipment

- AM/FM radio
- Locking glove box
- Electric remote hatchback release
- Custom interior trim including: woodtone instrument panel, luxury 3-spoke steering wheel, knit cloth headliner
- Body-side dual pinstripes
- Belt, sill, drip and wheel-lip moldings
- Aerodynamic left sport mirror
- 165/75 WSW radial tires
- Wheel trim rings

Standard safety features

- Unibelt restraint system
- Shoulder belt tension-reliever release and door-actuated tension release
- Hazard warning flasher
- Turn signals with lane-change feature
- Side marker lights and reflectors
- Back-up lights
- Disc brakes
- Dual braking system with warning lights
- Dual throttle return springs
- Circuit breakers for wipers and headlamps
- Electric windshield wipers and washers
- Energy-absorbing steering wheel
- High-penetration-resistant windshield
- Padded instrument panel, sun visors, and top on front seat-back
- Double ball-joint-mounted rearview mirror with soft rim
- Side door guard beams
- Folding seat-back latches
- Interlocking door latches
- Dual hood latch system
- Front-seat head restraints
- Lock buttons override inside door release lever (except driver's door)
- Fire-retardant interior trim materials
- Left outside rearview mirror
- Safety-rim wheels

Exterior Dimensions	TC3	4-door
Wheelbase	96.7"	99.2"
Overall length	172.7"	164.8"
Overall width	66.0"	66.2"
Overall height	51.4"	53.7"
Track	-front 56.0"	56.0"
	-rear 55.6"	55.6"

*Includes optional bumper guards

Interior Dimensions	TC3	4-door
Headroom	-front 37.5"	38.3"
	-rear 34.7"	37.4"
Legroom	-front 42.5"	42.0"
	-rear 28.6"	33.0"
Hiproom	-front 52.6"	52.6"
	-rear 46.1"	52.4"
Shoulder-room	-front 52.5"	51.7"
	-rear 50.9"	51.5"
Luggage capacity (with optional tonneau cover on TC3)		
-with rear seat-back raised	10.7 cu. ft.	10.5 cu. ft.
Cargo capacity		
-with rear seat-back folded	33.8 cu. ft.	36.1 cu. ft.

Standard specifications

Engine	104.7 CID (1.7L) 2-bbl. 4-cylinder
Transmission	4-speed manual, fully synchronized
Suspension	Front: Iso-Strut independent with sway bar. Rear: independent trailing arm with integral anti-sway control.
Brakes	Front, disc; Rear, drum
Electrical System	Battery, 310 amp; alternator, 65 amp; Electronic Ignition System

Engine and transmission availability

Engine	Transmission (All states except California)	Axle Ratio
104.7 CID (1.7L) 4-cylinder	4-speed manual floor shift TorqueFlite automatic	3.3 3.4 (3.6 optional)
California (N95 required*). Also available in other states.		
104.7 (1.7L) 4-cylinder	4-speed manual floor shift TorqueFlite automatic	3.5 3.6

*Emissions Control System and Testing.

Tire availability

Tire Size	Type	Sidewall	TC3	4-dr.
P155/80R13"	Glass-Belted Radial	White		S
P165/75R13"	Glass-Belted Radial	White	S	O(1)
P175/75R13"	Steel-Belted Radial	White	O	O
P165/75R13"	Steel-Belted Radial	White	O	O
P185/70R13"	Aramid-Belted Radial	OWL	O	

OWL=Outline White Letter (O)=Optional

(1)=Minimum size required with air conditioning, California Emissions Control System and Luggage Rack.

Single colors



Buy or lease a Plymouth Horizon.



NOTE: The Horizon 4-door Hatchback model is recommended for towing trailers up to 1,000 pounds in total loaded weight and having less than 30 sq. ft. of frontal area. The automatic transmission option is recommended for trailer-towing use.

All product illustrations and specifications are based on authorized information. Although descriptions are believed correct at publication approval, accuracy cannot be guaranteed. Some of the equipment shown on product illustrations is optional, at extra cost. Chrysler Corporation reserves the right to make changes from time to time, without notice or obligation, in prices, specifications, colors and materials, and to change or discontinue models.