

C A M A R O

The 2+2 legend that can make you look good, even when it's standing still.

A sporty RS model joins an even hotter IROC-Z on the Camaro performance team for 1989. Four Camaros are available: RS Coupe, RS Convertible, IROC-Z Coupe, and IROC-Z Convertible.

New features on all Camaros include a retuned suspension, increased corrosion protection and the PASS-Key™ (Personal Automotive Security System) theft deterrent system.

Camaro RS. RS, now the lowest-priced Camaro, makes a bold design statement with IROC-inspired body-color lower aero panels, new P215/65R-15 all-season Touring tires on Z28-style cast-aluminum wheels, rear spoiler and special "RS" identification.

The RS also features a sport suspension, quick-ratio power steering, gage package with tachometer and 2.8 Liter V6 with Multi-Port Fuel Injection. A 5.0 Liter V8 with EFI is optional.

Camaro IROC-Z. IROC-Z is an American performance legend. A 5.0 Liter V8 with EFI is standard; a 5.0 Liter V8 with Tuned-Port Fuel Injection is optional. But IROC's big gun is a 5.7 Liter V8 with TPI, delivering 230 HP at 4400 RPM.

Fast-ratio power steering, larger stabilizer bars front and rear, and grippy 15" Eagle GT tires are all part of the competition-proven suspension. For the ultimate in IROC-Z appearance, 16" aluminum wheels and Eagle unidirectional tires are optional.



Camaro RS interior.



Camaro IROC-Z Coupe with optional removable roof panels and 16" cast-aluminum wheels.

| CAMARO IROC-Z COUPE | 1 | 2 | 3 |
|---|----------|----------|----------|
| Preferred Equipment Group 1 | | | |
| Auxiliary Lighting | ▪ | ▪ | ▪ |
| Body-Side Moldings | ▪ | ▪ | ▪ |
| Heavy-Duty Battery | ▪ | ▪ | ▪ |
| Tinted Glass | ▪ | ▪ | ▪ |
| Preferred Equipment Group 2 | | | |
| Air Conditioning | | ▪ | ▪ |
| Carpeted Front and Rear Floor Mats | | ▪ | ▪ |
| Comfortilt Steering Wheel | | ▪ | ▪ |
| Electronic Speed Control with Resume Speed | | ▪ | ▪ |
| Intermittent Wipers | | ▪ | ▪ |
| Power Hatch Release | | ▪ | ▪ |
| Power Door Locks | | ▪ | ▪ |
| Radio: Electronically Tuned AM/FM Stereo with Seek and Scan, Stereo Cassette Tape Player, Extended Range Sound System and Digital Clock | | | ▪ |
| Preferred Equipment Group 3 | | | |
| Halogen High- and Low-Beam Headlamps | | | ▪ |
| Mirrors, Electric Twin Remote | | | ▪ |
| Radio: Electronically Tuned AM Stereo*/FM Stereo with Seek and Scan, Stereo Cassette Tape Player with Search and Repeat, Graphic Equalizer, Extended Range Sound System and Digital Clock | | | ▪ |
| Rear Compartment Cover | | | ▪ |
| Mirror with Dual Reading Lamps | | | ▪ |
| Power Driver's Seat | | | ▪ |
| Power Windows | | | ▪ |

| CAMARO IROC-Z CONVERTIBLE | 1 | 2 | 3 |
|--|----------|----------|----------|
| Preferred Equipment Group 1 | | | |
| Body-Side Molding | ▪ | ▪ | ▪ |
| Heavy-Duty Battery | ▪ | ▪ | ▪ |
| Tinted Glass | ▪ | ▪ | ▪ |
| Preferred Equipment Group 2 | | | |
| Air Conditioning | | ▪ | ▪ |
| Carpeted Front and Rear Floor Mats | | ▪ | ▪ |
| Comfortilt Steering Wheel | | ▪ | ▪ |
| Electronic Speed Control with Resume Speed | | ▪ | ▪ |
| Intermittent Wipers | | ▪ | ▪ |
| Power Door Locks | | ▪ | ▪ |
| Radio: Electronically Tuned AM/FM Stereo with Seek and Scan, Stereo Cassette Tape Player, Extended Range Sound System and Digital Clock | | | ▪ |
| Preferred Equipment Group 3 | | | |
| Electric Sport Mirrors, Twin Remote | | | ▪ |
| Halogen High- and Low-Beam Headlamps | | | ▪ |
| Power Driver's Seat | | | ▪ |
| Power Windows | | | ▪ |
| Radio: Electronically Tuned AM Stereo*/FM Stereo and Seek and Scan, Stereo Cassette Tape Player with Search and Repeat, Graphic Equalizer, Extended Range Sound System and Digital Clock | | | ▪ |

Individually Available Options

(May be added with any equipment group if not already included.)

- Air Conditioning
- Aluminum Wheels (16") (NA on RS)
- Deluxe Luggage Compartment Trim (NA on Convertible)
- Door Edge Moldings (Black)
- Electric Rear Window Defogger (NA on Convertible)
- Engine Block Heater
- 4-Wheel Disc Power Brakes (IROC-Z only)
- Limited Slip Differential Axle
- Locking Rear Floor Cover (NA on Convertible)
- Power Door Locks
- Rear Window Louvers (NA on Convertible)
- Removable Roof Panels with Locks (NA on Convertible)
- Split-Folding Rear Seat-Back (Requires Custom Trim)
- Power Hatch Release.

Interiors



Standard cloth reclining bucket seats with integral head restraints. Available colors: Black, Light Brown, Gray, Red.



Optional Custom Cloth reclining bucket seats with adjustable head restraints. Available colors: Black, Light Brown, Gray, Red.

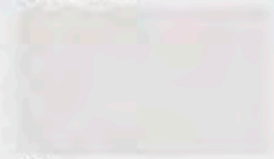


Optional Custom reclining bucket seats with leather seating surfaces and adjustable head restraints. Available colors: Black, Light Brown, Gray, Red.

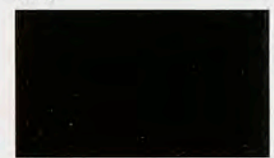
Exterior Colors



Light Blue Metallic*



White



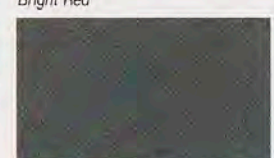
Black



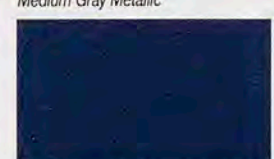
Dark Red Metallic



Bright Red



Medium Gray Metallic*



Bright Blue Metallic

*Not available on IROC-Z.

*Receives C-Quam® AM stereo broadcasts. Most AM stereo stations across the country broadcast in C-Quam but some do not. Check with your local station for compatibility in your area.



Camaro RS Coupe with optional rear window louvers.



Camaro IROC-Z Coupe.



Camaro IROC-Z Convertible.

**Camaro RS
Standard Features**

- AM/FM stereo with Seek and Scan, Extended Range Sound System and digital clock
- Base-coat/clear-coat paint
- Cloth reclining bucket seats
- Center console with storage compartment
- Deep-well luggage area
- Dual color-keyed sport mirrors (left-hand remote)
- 15" x 7" cast-aluminum wheels
- Extensive anti-corrosion protection
- Five-speed manual transmission
- Front air dam/ground-effects rocker moldings

- Front disc brake audible wear sensors
- PASS-Key™ vehicle anti-theft system
- Power front disc/rear drum brakes
- Power steering
- Power ventilation system
- P215/65R-15 steel-belted all-season radial Touring tires
- Rear-deck spoiler
- Rear hatch with automatic pull-down
- Side window defoggers
- Special Instrumentation with tachometer
- Sport suspension
- 2.8 Liter V6 with Multi-Port Fuel Injection.

**Camaro IROC-Z
Standard Features**

In addition to or replacing Camaro RS equipment:

- Black-painted headlamp openings
- Black simulated louvers on hood
- Camaro gold or silver letters on lower front fascia
- 5.0 Liter V8 with EFI
- Halogen fog lamps
- Leather-wrapped steering wheel and shift knob
- Special instrumentation with tachometer
- Special performance ride and handling suspension
- Specific striping and color-coordinated IROC-Z door decals
- Specific tail lamps
- Visor vanity mirror.



PASS-Key™ theft deterrent system is standard on all 1989 Camaros.



IROC-Z 15" cast-aluminum wheel (with silver or gold accents). Optional IROC-Z 16" cast-aluminum wheel also available (with gray or gold accents).

Preferred Equipment Groups

The 1989 Camaro features optional Preferred Equipment Groups that help simplify the buying process. Choose the package containing the equipment you desire, then select from the accompanying list of individual options. Some restrictions apply. See your dealer for details.

| CAMARO RS COUPE | 1 | 2 | 3 |
|---|---|---|---|
| Preferred Equipment Group 1 | | | |
| Auxiliary Lighting | ▪ | ▪ | ▪ |
| Body-Side Moldings | ▪ | ▪ | ▪ |
| Heavy-Duty Battery | ▪ | ▪ | ▪ |
| Tinted Glass | ▪ | ▪ | ▪ |
| Preferred Equipment Group 2 | | | |
| Air Conditioning | | ▪ | ▪ |
| Carpeted Front and Rear Floor Mats | | ▪ | ▪ |
| Comfortilt Steering Wheel | | ▪ | ▪ |
| Electronic Speed Control with Resume Speed | | ▪ | ▪ |
| Intermittent Wipers | | ▪ | ▪ |
| Power Door Locks | | ▪ | ▪ |
| Radio: Electronically Tuned AM/FM Stereo with Seek and Scan, Stereo Cassette Tape Player, Extended Range Sound System and Digital Clock | | ▪ | ▪ |
| Preferred Equipment Group 3 | | | |
| Halogen High- and Low-Beam Headlamps | | | ▪ |
| Power Windows | | | ▪ |
| Rear Compartment Cover | | | ▪ |
| Mirror with Dual Reading Lamps | | | ▪ |

| CAMARO RS CONVERTIBLE | 1 | 2 | 3 |
|---|---|---|---|
| Preferred Equipment Group 1 | | | |
| Body-Side Molding | ▪ | ▪ | ▪ |
| Heavy-Duty Battery | ▪ | ▪ | ▪ |
| Tinted Glass | ▪ | ▪ | ▪ |
| Preferred Equipment Group 2 | | | |
| Air Conditioning | | ▪ | ▪ |
| Carpeted Front and Rear Floor Mats | | ▪ | ▪ |
| Comfortilt Steering Wheel | | ▪ | ▪ |
| Electronic Speed Control with Resume Speed | | ▪ | ▪ |
| Intermittent Wipers | | ▪ | ▪ |
| Radio: Electronically Tuned AM/FM Stereo with Seek and Scan, Stereo Cassette Tape Player, Extended Range Sound System and Digital Clock | | ▪ | ▪ |
| Preferred Equipment Group 3 | | | |
| Halogen High- and Low-Beam Headlamps | | | ▪ |
| Power Windows | | | ▪ |

POWER TEAMS*

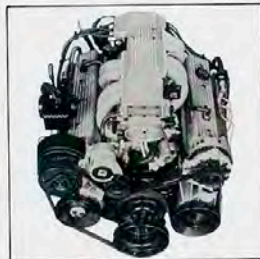
| Engines | Engine Availability | | | | | Transmission Availability | |
|--|---------------------|----------|----------------|---------------|----------------|---------------------------|-------------------|
| | Ordering Code | RS Coupe | RS Convertible | IROC-Z IROC-Z | Manual 5-Speed | Automatic 4-Speed | Automatic 4-Speed |
| 2.8 Liter V6* with MFI (173 CID) | LB8 | S | NA | NA | NA | S | O |
| 5.0 Liter V8 with EFI (305 CID) | LO3 | O | S | S | S | S | O |
| 5.0 Liter V8 with TPI (305 CID) | LB9 | NA | NA | O | O | S | O |
| 5.7 Liter V8 with TPI (350 CID) | B2L | NA | NA | O | NA | NA | O* |

S—Standard O—Optional NA—Not Available EFI—Electronic Fuel Injection
MFI—Multi-Port Fuel Injection TPI—Tuned-Port Fuel Injection

*Produced in USA, Canada and Mexico. *Required option



2.8 Liter V6 with Multi-Port Fuel Injection (standard on Camaro RS Coupe).



5.7 Liter V8 with Tuned-Port Injection (optional on Camaro IROC-Z Coupe).

- Computerized idle adjustment for quick engine response in any weather.
- Simple turn-key starting, hot or cold.
- A single-belt accessory drive designed to never need adjustment.
- New high-efficiency fuel injectors, providing improved fuel atomization and less susceptibility to plugging on any gasoline blend.

| DIMENSIONS (in.) | IROC-Z Convertible | | |
|----------------------------|--------------------|--------|-------------|
| | RS | IROC-Z | Convertible |
| Wheelbase | 101.0 | 101.0 | 101.0 |
| Length (Overall) | 192.0 | 192.0 | 192.0 |
| Width (Overall) | 72.8 | 72.8 | 72.8 |
| Height (Overall) | 50.3 | 50.3 | NA |
| Tread—Front | 60.0 | 60.0 | 60.0 |
| Tread—Rear | 60.9 | 60.9 | 60.9 |
| Cargo Volume (cu. ft.) | 31.0 | 31.0 | 5.2 |
| Fuel Tank Capacity (gals.) | 15.5 | 15.5 | 15.5 |

*Should not be used on Camaros equipped with P245/50ZR-16 tires because of possible damage to the vehicle.

Sound Systems



Standard electronically tuned Delco AM/FM stereo radio with Seek and Scan, Extended Range Sound System and digital clock.



Optional electronically tuned Delco AM/FM stereo radio with Seek and Scan, Extended Range Sound System, cassette player and digital clock.



Optional electronically tuned Delco AM stereo/FM stereo with Seek and Scan, Extended Range Sound System, graphic equalizer, cassette with search and repeat and digital clock.



Optional AM/FM Bose II stereo radio with tuned speakers, cassette player with search and repeat, Dolby® sound, and digital clock. (Not available on Convertible models.)

*Receives C-Quam® AM stereo broadcasts. Most AM stereo stations across the country broadcast in C-Quam but some do not. Check with your local stations for compatibility in your area.



Important: A Word About This Catalog.

We have tried to make this catalog as comprehensive and factual as possible. We reserve the right, however, to make changes at any time, without notice, in prices, colors, materials, equipment, specifications, models and availability. Since some information may have been updated since the time of printing, please check with your Chevrolet dealer for complete details, including details on the GM warranty which covers Chevrolets.

A Word About Engines.

Chevrolets are equipped with engines produced by different operating units of GM, its subsidiaries or suppliers to GM worldwide.

A Word About Assembly of Chevrolets.

Chevrolets are assembled by different operating units of General Motors, its subsidiaries or suppliers to GM worldwide. We sometimes find it necessary to produce Chevrolets with different or differently sourced components than originally scheduled. All such components have been approved for use in Chevrolets and will provide the quality performance associated with the Chevrolet name. Since some options may be unavailable when your vehicle is assembled, we suggest that you verify that your vehicle includes the equipment you ordered or, if there are changes, that they are acceptable to you.

A Word About Updated Service Information.

Chevrolet regularly sends its dealers useful service bulletins about Chevrolet products. Chevrolet monitors product performance in the field. We then prepare bulletins for servicing our products better. Now you can get these bulletins, too. Ask your dealer. To get ordering information, call toll-free 1-800-551-4123.

At your Chevrolet dealer's, financing or leasing your new Camaro can be as easy as saying GMAC.

© 1988 General Motors Corporation. All rights reserved.

Let's get it together... buckle up.



LITHO IN U.S.A. 4824 JULY 1988