

2013

# ***EQUINOX***





# *Seven billion people. One road.*

Movement is the universal language of personal freedom. Our founder Louis Chevrolet spoke it fluently. As a Swiss immigrant, he came to America with a dream of racing cars. He wished for everyone – not just the rich or entitled – to experience the exhilaration he felt behind the wheel.

In 1911, he began building his first car. One hundred years later, a new Chevrolet is sold every 6.6 seconds. That amounts to 4.76 million vehicles in more than 140 countries – more than Louis Chevrolet could ever have imagined.

The depth of our heritage and passion is evident in everything we do here at Chevrolet. It's ingrained in the bold design, spirited performance, proven durability and exceptional value our drivers enjoy. It empowers us to be leaders in innovation. And it inspires us to continuously raise the bar – today, tomorrow and into what promises to be a bright future.

Currently, we are pioneering new propulsion technologies to meet the demanding energy and environmental needs of a global automotive brand. We're also employing alternative energy sources and investing in fuel-saving technologies to help reduce our carbon footprint with the goal of reducing 8 million metric tons of carbon dioxide emissions over the next few years.

Our global reach is expanding, yet our mission remains the same. We want every customer to feel like family – no matter where you are in the world. And no matter where you're going, we want you to enjoy the ride in a Chevrolet.

From the vision of one to the journey of many, Chevy Runs Deep.



Equinox LTZ shown in Crystal Red Tintcoat (extra-cost color) with available features.

# OUTRUN FUEL COSTS

## CROSS OVER TO EQUINOX

If you need a crossover that fits your lifestyle, Equinox is the way to go. You'll travel efficiently, with an EPA-estimated 22 MPG city/32 highway. For added peace of mind, Equinox was named a 2012 Top Safety Pick by the Insurance Institute for Highway Safety.



## EPA-ESTIMATED 22 MPG CITY/32 HIGHWAY

Meet the crossover with unexpected fuel economy. The advanced ECOTEC® 2.4L DOHC 4-cylinder engine features Direct Injection and Variable Valve Timing, while an Eco button helps maximize the miles.

Equinox LTZ shown in Black Granite Metallic (extra-cost color) with available features.

# PERFORMANCE TIMES TWO



## TWO ENGINES, NO COMPROMISES

The 2013 Equinox lets you choose either the advanced ECOTEC 2.4L DOHC 4-cylinder engine or the newly available 3.6L V6 engine that delivers a best-in-class 301 horsepower and 272 lb.-ft. of torque. With a 0–60 time of just 6.7 seconds<sup>1</sup>, the V6 Equinox makes one powerful statement. With either engine, you'll enjoy the refinement and responsiveness of a 6-speed automatic transmission.



<sup>1</sup> With available all-wheel drive.

Equinox LTZ shown in Silver Ice Metallic with available features.



Equinox 2LT interior shown in Jet Black/Brownstone with available features.



The Driver Information Center monitors 26 different vehicle functions including oil life, tire pressure and fuel range.



Equinox LTZ interior shown in Jet Black/Light Titanium-Color with available features.



### **MULTI-FLEX SLIDING REAR SEAT**

This ingenious 60/40 split-folding rear seat folds flat to create 63.7 cubic feet of maximum cargo space!<sup>1</sup> Slide it all the way back to add almost eight extra inches of rear leg room – the most in its class. Or slide the seat forward to add almost eight extra inches of storage.



### **AVAILABLE 8-WAY POWER FRONT SEATS**

Equinox has got your back. For added convenience, 8-way power seats are available for both the driver and front passenger. Power lumbar support and vertical height adjustment are standard on the driver seat in every model.

### **THE GREAT INDOORS**

Even inside, Equinox stands out. Leather-appointed seating (standard on LTZ and available on 2LT) features two-tone panels and contrasting color stitching. A tilt and telescoping steering wheel and ice-blue ambient lighting add to this inviting driving experience. Heated front seats – standard on 2LT and LTZ – are another unexpected luxury. Up to five people can enjoy uncompromising comfort and a quiet, relaxing ride thanks to acoustic-laminated glass and Active Noise Cancellation (4-cylinder models).

<sup>1</sup> Cargo and load capacity limited by weight and distribution.



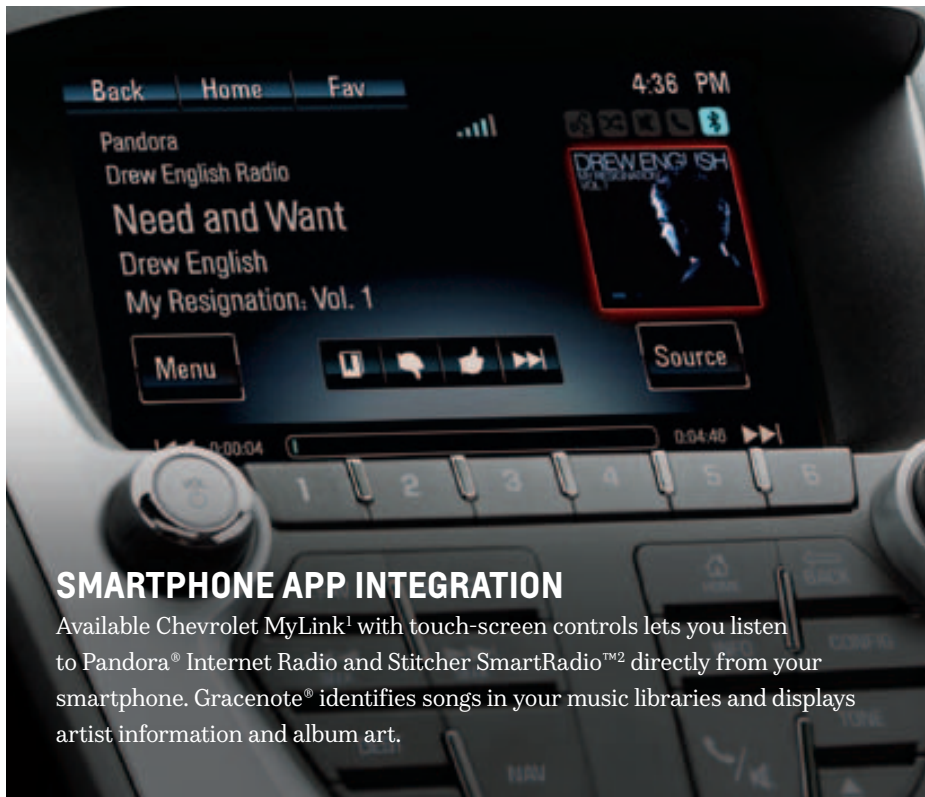


## CHEVROLET MYLINK

Traveling the road of life just got easier. Chevrolet MyLink<sup>1</sup>, standard on LT and LTZ, integrates content from your compatible smartphone to a 7-inch diagonal color touch-screen. Use voice commands or touch controls to access contacts, initiate hands-free calling or play music from your MP3 player, flash drive or compatible smartphone with Bluetooth<sup>®</sup> audio streaming. It's easy to stay connected when you have Chevrolet MyLink!

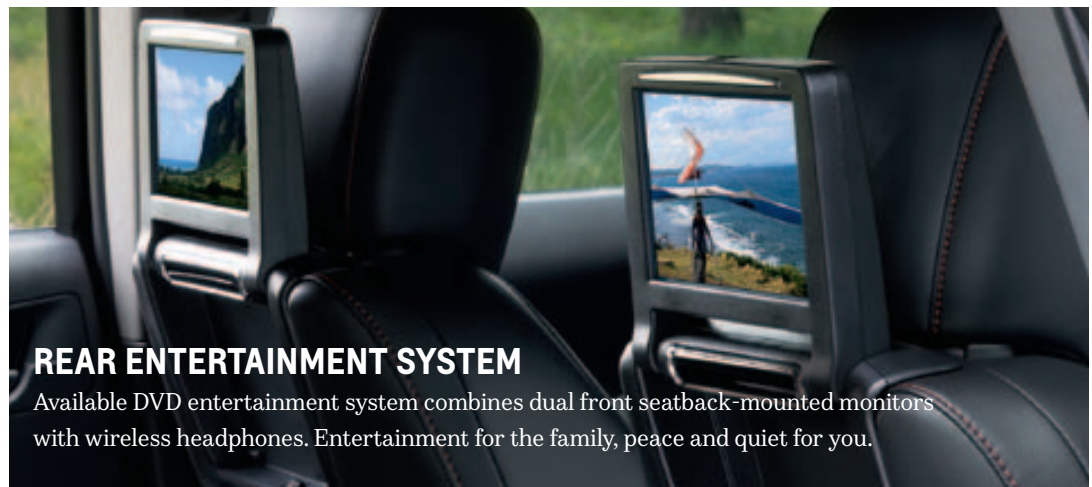
<sup>1</sup> MyLink functionality varies by model. Full functionality requires compatible Bluetooth and smartphone, and USB connectivity for some devices.

Equinox 2LT interior shown in Jet Black/Brownstone with available features.



### SMARTPHONE APP INTEGRATION

Available Chevrolet MyLink<sup>1</sup> with touch-screen controls lets you listen to Pandora<sup>®</sup> Internet Radio and Stitcher SmartRadio<sup>™2</sup> directly from your smartphone. Gracenote<sup>®</sup> identifies songs in your music libraries and displays artist information and album art.



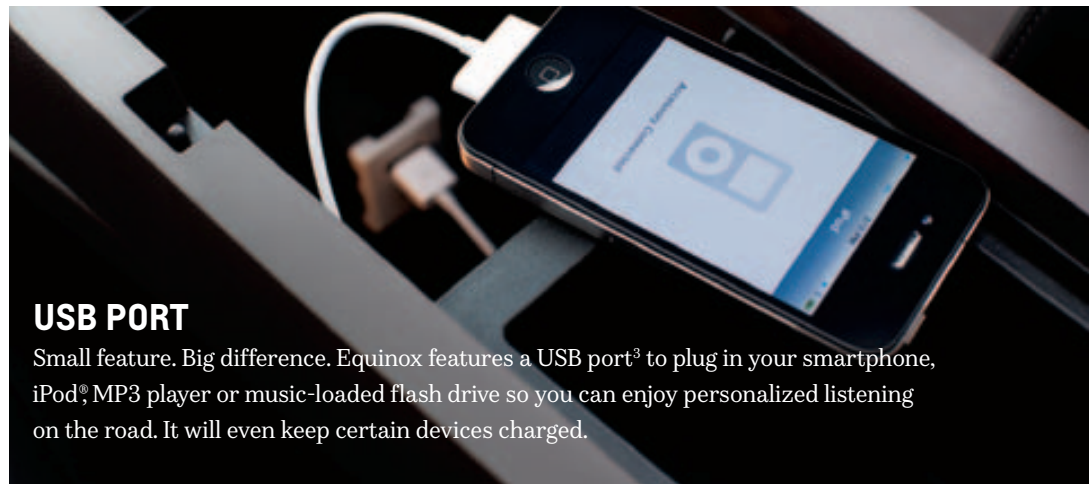
### REAR ENTERTAINMENT SYSTEM

Available DVD entertainment system combines dual front seatback-mounted monitors with wireless headphones. Entertainment for the family, peace and quiet for you.



### CHEVROLET MYLINK WITH NAVIGATION

Available touch-screen navigation integrates seamlessly with Chevrolet MyLink<sup>1</sup>. Use voice commands or touch-screen controls to set destinations, choose your map view, or activate turn-by-turn directions.



### USB PORT

Small feature. Big difference. Equinox features a USB port<sup>3</sup> to plug in your smartphone, iPod<sup>®</sup>, MP3 player or music-loaded flash drive so you can enjoy personalized listening on the road. It will even keep certain devices charged.



### ONSTAR REMOTELINK

Now you can remotely lock and unlock your vehicle and even start your engine<sup>4</sup> from your smartphone. View real-time vehicle diagnostics including fuel, remaining oil life and tire pressure with OnStar<sup>®</sup> RemoteLink.<sup>™5</sup>

<sup>1</sup> MyLink functionality varies by model. Full functionality requires compatible Bluetooth and smartphone, and USB connectivity for some devices. <sup>2</sup> Data plan rates apply. <sup>3</sup> Not compatible with all devices. <sup>4</sup> Requires available remote vehicle starter system. <sup>5</sup> Available on select iPhone, Android and BlackBerry devices. Services vary by phone, vehicle and conditions. Requires active OnStar subscription, which is standard for six months.

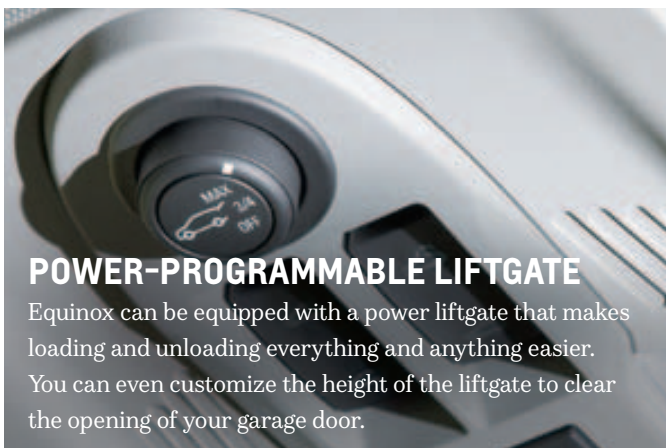
# FUN FOLLOWS FUNCTION



## INTELLIGENTLY BEAUTIFUL

Equinox designers and engineers set out to create an uncompromising design that's beautiful, reduces wind drag and helps boost efficiency. Sculpted lines and exterior accents add style to the equation. Available roof rack side rails are smartly integrated, making it easy to add available center rails or dealer-installed accessories. Now you're ready to carry everything from bikes to boards to skis.

Equinox LTZ shown in Atlantis Blue Metallic with dealer-installed accessories and other available features.



## POWER-PROGRAMMABLE LIFTGATE

Equinox can be equipped with a power liftgate that makes loading and unloading everything and anything easier. You can even customize the height of the liftgate to clear the opening of your garage door.



## 63.7 CUBIC FEET OF MAXIMUM CARGO SPACE<sup>1</sup>

Fold either side – or both sides – of the 60/40 split-folding rear seat and say hello to the great indoors. How much space is available inside the 2013 Equinox? Enough to live life without compromise – and take a whole lot of it with you.

<sup>1</sup> Maximum space with rear seat folded. Cargo and load capacity limited by weight and distribution.

A rear view of a dark grey Chevrolet Equinox LTZ SUV parked on a paved road. The car is the central focus, with its rear lights, Chevrolet logo, and 'EQUINOX LTZ' badge visible. The license plate reads 'NDL630'. The background shows a scenic landscape with green trees, a rocky cliffside, and a blue sky with light clouds.

# WORD TRAVELS

## **A CONSUMERS DIGEST “BEST BUY”**

Equinox has been named a *Consumers Digest* “Best Buy” for the 2010, 2011 and 2012 model years. No wonder people are talking.

## **“10 MOST FUEL-EFFICIENT SUVS AND CROSSOVERS”<sup>1</sup> – KBB.COM**

“With some of the best fuel-economy<sup>2</sup> figures in the segment, Equinox continues to draw customers – new and repeat alike – making the most of every penny they spend.”

## **2012 IIHS TOP SAFETY PICK**

Equinox was named a 2012 Top Safety Pick by the Insurance Institute for Highway Safety.

Equinox LTZ shown in Tungsten Metallic with available features.

<sup>1</sup> From 2012 Chevrolet Equinox review on Kelley Blue Book's [www.kbb.com](http://www.kbb.com). Kelley Blue Book is a registered trademark of Kelley Blue Book Co., Inc. <sup>2</sup> EPA-estimated 22 MPG city/32 highway.

# ADVANCED SAFETY

AN UNCOMPROMISING COMMITMENT  
TO YOUR WELL-BEING

Equinox LTZ shown in  
Champagne Silver Metallic (interim  
availability) with available features.



Equinox was designed to meet your expectations for a comprehensive safety package in an advanced crossover. Available Forward Collision Alert and Lane Departure Warning notify you of potential trouble. Also poised to enhance safety is the StabiliTrak® Electronic Stability Control system that monitors the road for slick conditions through a combination of stability and traction control technologies. And integrated blind spot mirrors enhance the ability to see traffic that may be obscured.

If a collision does occur, six standard air bags<sup>1</sup> and front safety belt pretensioners respond – while LATCH (Lower Anchors and Top tethers for CHildren) helps keep child safety seats secure. After a collision, OnStar,<sup>2</sup> standard for six months, with Automatic Crash Response,<sup>2</sup> alerts an Advisor to your exact location – even if you're unable to respond. That's safety you can believe in.

<sup>1</sup> Always use safety belts and the correct restraint for your child's age and size. Even in vehicles equipped with the Passenger Sensing System, children are safer when properly secured in a rear seat in the appropriate infant, child or booster seat. Never place a rear-facing infant restraint in the front seat of any vehicle equipped with a passenger air bag. See the Owner's Manual and the child safety seat instructions for more safety information. <sup>2</sup> Visit [onstar.com](http://onstar.com) for coverage map, details and system limitations. Services vary by model and conditions. OnStar acts as a link to existing emergency service providers.

## FORWARD COLLISION ALERT

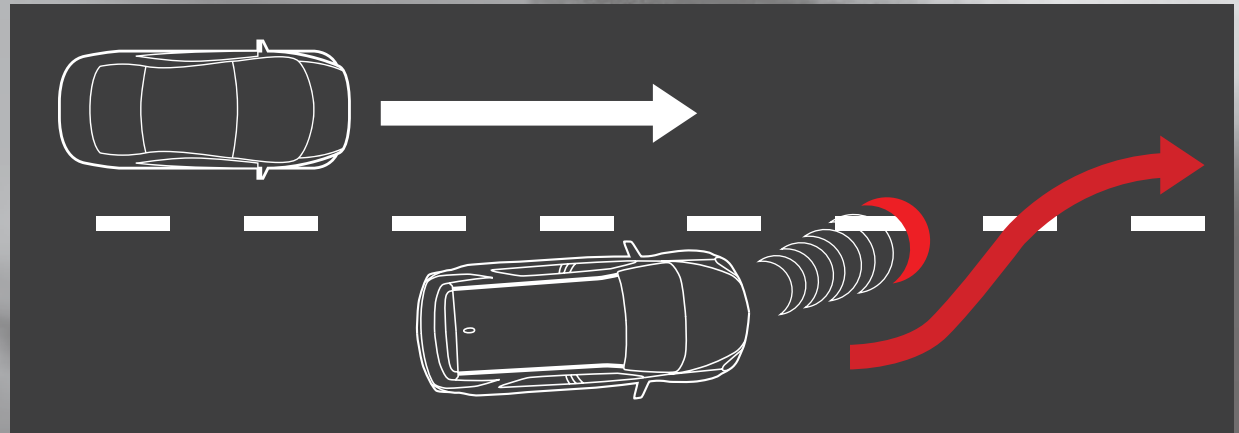
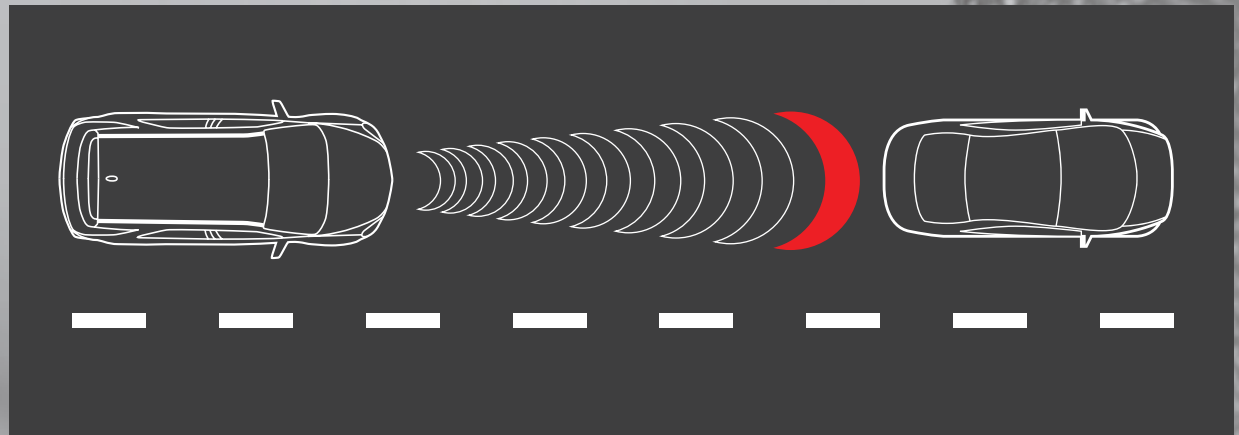
This available active safety technology utilizes a windshield-mounted high-resolution camera and advanced image processing to monitor your proximity to the vehicle in front of you. The icon at the left (A) tells you when a vehicle is detected ahead. The center icon (B) lights up when your vehicle is following too closely and flashes with audible chimes when there is danger of a front-end collision.



In-dash warning lights.

## LANE DEPARTURE WARNING

This available system reads the lines on the road, providing a visual and audible alert when you stray into another lane without signaling. The icon at right (C) turns from green to amber when an unsignaled lane change begins.



## REAR VISION CAMERA

Forward thinking for when you're backing up. An available rear vision camera puts eyes in the back of your head — or at least on the available touch-screen in the Equinox center stack.

# PLAYING IT SAFE

ALONG WITH A VEHICLE DESIGNED TO BE MORE USEFUL COMES THE NEED TO BE MORE PROTECTIVE



## STANDARD 4-WHEEL ANTILOCK DISC BRAKES

Standard antilock disc brakes help maintain steering control by reducing wheel lockup during hard braking on most slippery surfaces. Equinox also includes an advanced Electronic Brake Force Distribution system that helps balance brake force between the front and rear under heavy braking.



## SIX STANDARD AIR BAGS

Sometimes a collision is unavoidable. If a moderate to severe collision does occur, sensors determine which of six air bags<sup>1</sup>, including head-curtain side-impact air bags, deploy to help keep you safe.



## STABILITRAK

In slick conditions, this safety system combines Electronic Stability Control with Traction Control to enhance stability and help keep you on the path being steered.



## ONSTAR

The safety of OnStar<sup>2</sup> is standard for six months. Built-in sensors can automatically alert an OnStar Advisor who is immediately connected into your vehicle to see if you need help sent to your exact location — even if you can't respond.

<sup>1</sup> Always use safety belts and the correct restraint for your child's age and size. Even in vehicles equipped with the Passenger Sensing System, children are safer when properly secured in a rear seat in the appropriate infant, child or booster seat. Never place a rear-facing infant restraint in the front seat of any vehicle equipped with a passenger air bag. See the Owner's Manual and the child safety seat instructions for more safety information. <sup>2</sup> Visit [onstar.com](http://onstar.com) for coverage map, details and system limitations. Services vary by model and conditions. OnStar acts as a link to existing emergency service providers.



Jet Black Cloth<sup>1</sup>



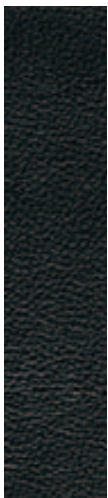
Jet Black/Light Titanium-Color Cloth<sup>1</sup>



Jet Black Premium Cloth<sup>2</sup>



Jet Black/Light Titanium-Color Premium Cloth<sup>2</sup>



Jet Black Leather Appointments<sup>3</sup>



Jet Black/Light Titanium-Color Leather Appointments<sup>3</sup>



Jet Black/Brownstone Leather Appointments<sup>3</sup>

<sup>1</sup> Standard on LS. <sup>2</sup> Standard on LT (2LT shown). <sup>3</sup> Standard on LTZ (shown). Available on 2LT.





Black



Black Granite Metallic<sup>1,2</sup>



Atlantis Blue Metallic<sup>3</sup>



Steel Green Metallic<sup>2,3</sup>



Crystal Red Tintcoat<sup>1,2</sup>



Tungsten Metallic<sup>2</sup>



Champagne Silver Metallic<sup>2,4</sup>



Ashen Gray Metallic<sup>3,4,5</sup>



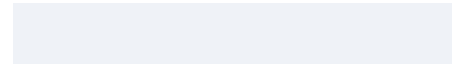
Silver Ice Metallic



White Diamond Tricoat<sup>1,2,5</sup>



Summit White



17" Aluminum Wheel  
(standard on all models)



18" Chrome-Clad  
Aluminum Wheel  
(available on 2LT and LTZ)



19" Chrome-Clad  
Aluminum Wheel  
(available on LTZ;  
requires V6 engine)

<sup>1</sup> Extra-cost color. <sup>2</sup> Available on LT and LTZ. <sup>3</sup> Not available with Jet Black/Brownstone interior. <sup>4</sup> Interim availability. <sup>5</sup> FWD 4-cylinder models only.

# SELECT VEHICLE FEATURES

## EQUINOX LS



---

ECOTEC 2.4L DOHC Direct Injection 4-cylinder engine

---

StabiliTrak® Electronic Stability Control System with Traction Control and rollover mitigation

---

Power steering with tilt and telescoping steering wheel and steering wheel-mounted controls for audio and cruise

---

4-wheel antilock disc brakes with Electronic Brake Force Distribution

---

Power-adjustable, manual-folding outside mirrors (black) with integrated blind spot mirrors

---

Multi-Flex® sliding rear seat with 60/40 split-folding seatback and 3-position recline

---

Six air bags and Passenger Sensing System<sup>1</sup>

---

USB port<sup>2</sup>

---

Compass and outside temperature displays

---

Bluetooth® wireless technology<sup>3</sup> for select phones

---



## EQUINOX 1LT



---

*In addition to or replacing LS features, 1LT includes:*

---

Premium Cloth seats

---

Deep-tinted glass for all rear windows

---

Leather-wrapped steering wheel with steering wheel-mounted controls for audio and cruise

---

Roof rack side rails

---

Power-adjustable, heated, manual-folding outside mirrors (body-color) with integrated blind spot mirrors

---

Rear vision camera

---

Chevrolet MyLink<sup>4</sup> Radio with 7-inch diagonal color touch-screen

---



<sup>1</sup> Always use safety belts and the correct restraint for your child's age and size. Even in vehicles equipped with the Passenger Sensing System, children are safer when properly secured in a rear seat in the appropriate infant, child or booster seat. Never place a rear-facing infant restraint in the front seat of any vehicle equipped with a passenger air bag. See the Owner's Manual and the child safety seat instructions for more safety information. <sup>2</sup> Not compatible with all devices. <sup>3</sup> Go to [gm.com/bluetooth](http://gm.com/bluetooth) to find out which phones are compatible with the vehicle. <sup>4</sup> MyLink functionality varies by model. Full functionality requires compatible Bluetooth and smartphone, and USB connectivity for some devices.

## EQUINOX 2LT



*In addition to or replacing 1LT features, 2LT includes:*

---

Premium Cloth seats with heated front seats

---

8-way power-adjustable driver seat

---

Pioneer® premium 8-speaker sound system

---

Auto-dimming inside rearview mirror

---

Automatic climate control

---

Foglamps

---

Remote vehicle starter system

---

## EQUINOX LTZ



*In addition to or replacing 2LT features, LTZ includes:*

---

Perforated leather-appointed seats with heated front seats

---

8-way power-adjustable front-passenger seat

---

Memory settings for driver seat and exterior mirrors

---

Body-color bumpers with bright lowers

---

Chrome door handles, exterior mirrors and roof rack side rail inserts

---

Power-programmable liftgate

---

Uplevel, projector-style halogen headlamps

---

Enhanced interior lighting

---

**Safety Package:** Forward Collision Alert, Lane Departure Warning and Rear Park Assist

---

Universal Home Remote

---



# SPECIFICATIONS

■ STANDARD □ AVAILABLE – NOT AVAILABLE

	LS	1LT	2LT	LTZ
<b>EXTERIOR</b>				
Bumpers: Front and rear body-color with charcoal lowers	■	■	■	–
Front and rear body-color with bright lowers	–	–	–	■
Door handles: Body-color	■	■	■	–
Chrome	–	–	–	■
Foglamps: Halogen	–	–	■	■
Headlamps: Halogen	■	■	■	–
Halogen, uplevel projector-style	–	–	–	■
Liftgate: Rear, manual with fixed glass	■	■	■	–
Rear, power-programmable with fixed glass	–	–	□ <sup>1</sup>	■
Mirrors: Black, manual-folding, power-adjustable	■	–	–	–
Body-color, manual-folding, power-adjustable, heated	–	■	■	–
Chrome, manual-folding, power-adjustable, heated	–	–	–	■
Integrated blind spot mirrors	■	■	■	■
Roof rack: Side rails	–	■	■	■
Center rails	–	–	–	■
<b>ENGINES/CHASSIS</b>				
Engine: ECOTEC 2.4L DOHC 4-cylinder with Direct Injection, 182 hp @ 6700 rpm; 172 lb.-ft. of torque @ 4900 rpm	■	■	■	■
3.6L V6 with Direct Injection, 301 hp @ 6500 rpm; 272 lb.-ft. of torque @ 4800 rpm	–	□ <sup>2</sup>	□	□
Hill Start Assist: Helps reduce rollback on an incline until vehicle begins moving forward	■	■	■	■
Steering: Power, variable-assist, electric	■	■	■	■
Power, variable-assist, hydraulic	–	□ <sup>3</sup>	□ <sup>3</sup>	□ <sup>3</sup>
Suspension: Front, independent struts; rear, multilink independent with hydraulic bushings, rear trailing arm links and stabilizer bar	■	■	■	■
Ride and Handling	–	–	–	□ <sup>3,4</sup>
Tire Pressure Monitor (excludes spare tire)	■	■	■	■
Transmission: 6-speed automatic with overdrive	■	■	■	■
<b>SAFETY &amp; SECURITY</b>				
Air bags: <sup>5</sup> Driver and front passenger, dual-stage, frontal with Passenger Sensing System; thorax side-impact, seat-mounted, driver and front passenger; head-curtain, side-impact for front and rear outboard seating positions	■	■	■	■
All-wheel drive	□	□	□	□
Brakes: 4-wheel antilock disc (ABS)	■	■	■	■

	LS	1LT	2LT	LTZ
<b>SAFETY &amp; SECURITY (CONTINUED)</b>				
Door locks: Power-programmable with lockout protection and rear-door child safety locks	■	■	■	■
Forward Collision Alert and Lane Departure Warning	–	–	□ <sup>6</sup>	■
LATCH (Lower Anchors and Top tethers for Children) system	■	■	■	■
Lights: Daytime running lamps with automatic exterior lamp control	■	■	■	■
OnStar <sup>7</sup> Directions & Connections <sup>®</sup> Plan (standard for six months), includes Automatic Crash Response	■	■	■	■
Rear vision camera	–	■	■	■
<b>Safety Package:</b> Forward Collision Alert, Lane Departure Warning and Rear Park Assist	–	–	□	■
StabiliTrak Electronic Stability Control System with Traction Control, Electronic Trailer Sway Control and rollover mitigation	■	■	■	■
Theft-deterrent system: content-theft alarm	■	■	■	■
<b>INTERIOR</b>				
Bluetooth <sup>®</sup> wireless technology <sup>8</sup> for select phones	■	■	■	■
Climate control: Manual	■	■	–	–
Automatic	–	–	■	■
<b>Driver Convenience Package:</b> 8-way power-adjustable driver seat and remote vehicle starter system	–	□	■	■
Driver Information Center (includes compass)	■	■	■	■
Floor mats: Carpeted, front and rear	■	■	■	■
Steering wheel: Mounted controls for audio and cruise	■	–	–	–
Leather-wrapped with mounted controls for audio and cruise	–	■	■	■
Tilt and telescoping	■	■	■	■
Memory: Settings for driver seat and exterior mirrors	–	–	–	■
Mirror, inside rearview: Manual day/night	■	■	–	–
Auto-dimming	–	–	■	■
<b>Power Convenience Package:</b> 8-way power-adjustable front-passenger seat, Universal Home Remote and power-programmable liftgate	–	–	□	■
Sunroof: Power, tilt/sliding with express-open feature	–	□	□	□
Universal Home Remote	–	–	□ <sup>1</sup>	■
Windows: Power with express-down feature (all windows) and passenger lockout	■	■	■	■

	LS	1LT	2LT	LTZ
<b>SEATING</b>				
Driver, power-adjustable lumbar and height	■	■	–	–
Driver, 8-way power-adjustable	–	□ <sup>9</sup>	■	■
Front and rear, leather-appointed with perforated leather inserts	–	–	□	■
Front-passenger, 8-way power-adjustable	–	–	□ <sup>1</sup>	■
Heated seats: Driver and front-passenger	–	–	■	■
Multi-Flex sliding rear seat with 60/40 split-folding seatback and 3-position recline	■	■	■	■
<b>AUDIO SYSTEMS</b>				
AM/FM stereo, CD player, SiriusXM Satellite Radio <sup>10</sup> with three trial months, Radio Data System (RDS) <sup>11</sup> technology, digital clock and outside temperature displays, auxiliary audio input jack and USB port <sup>12</sup>	■	–	–	–
Chevrolet MyLink Radio: <sup>13</sup> 7-inch diagonal color touch-screen, AM/FM stereo, CD player, SiriusXM Satellite Radio <sup>10</sup> with three trial months, digital clock and outside temperature displays, auxiliary audio input jack, USB port, <sup>12</sup> smartphone integration, Gracenote <sup>®</sup> database and enhanced voice recognition	–	■	■	■
Chevrolet MyLink Radio <sup>13</sup> with Navigation: 7-inch diagonal color touch-screen, AM/FM stereo, CD player, SiriusXM Satellite Radio and NavTraffic <sup>10</sup> with three trial months, digital clock and outside temperature displays, auxiliary audio input jack, USB port, <sup>12</sup> smartphone integration, Gracenote database, enhanced voice recognition and enhanced navigation	–	–	□	□
Pioneer <sup>®</sup> premium 8-speaker sound system with subwoofer and amplifier, 250 watts	–	□ <sup>3</sup>	■	■
Rear Seat Entertainment System: Dual-display DVD screens located on rear of front seatbacks and dual wireless headphones <sup>14</sup>	–	–	□	□
SiriusXM Satellite Radio <sup>10</sup> with three trial months	■	■	■	■
USB port <sup>12</sup>	■	■	■	■

**1** Requires available Power Convenience Package. **2** Requires available Pioneer sound system. **3** Requires available V6 engine. **4** Requires available 18" or 19" wheels. **5** Always use safety belts and the correct restraint for your child's age and size. Even in vehicles equipped with the Passenger Sensing System, children are safer when properly secured in a rear seat in the appropriate infant, child or booster seat. Never place a rear-facing infant restraint in the front seat of any vehicle equipped with a passenger air bag. See the Owner's Manual and the child safety seat instructions for more safety information. **6** Requires available Safety Package. **7** Visit onstar.com for coverage map, details and system limitations. Services vary by model and conditions. OnStar acts as a link to existing emergency service providers. **8** Go to gm.com/bluetooth to find out which phones are compatible with the vehicle. **9** Requires available Driver Convenience Package. **10** If you subscribe after your trial period, subscriptions are continuous until you call SiriusXM to cancel. See SiriusXM Customer Agreement for complete terms at siriusxm.com. Other fees and taxes will apply. All fees and programming subject to change. For more information about NavTraffic, visit siriusxm.com/navtraffic. XM satellite service is available only in the 48 contiguous United States and Washington, D.C. **11** RDS functions only where stations broadcast RDS information. **12** Not compatible with all devices. **13** MyLink functionality varies by model. Full functionality requires compatible Bluetooth and smartphone, and USB connectivity for some devices. **14** Requires leather-appointed seating and Chevrolet MyLink Radio with Navigation.

# MAXIMUM CAPACITIES

## EPA-ESTIMATED FUEL ECONOMY

2.4L FWD 22 MPG city/32 highway/26 combined  
 2.4L AWD 20 MPG city/29 highway/23 combined  
 3.6L FWD 17 MPG city/24 highway/20 combined  
 3.6L AWD 16 MPG city/23 highway/19 combined

## FUEL TANK (APPROXIMATE)

18.8 gallons for 4-cylinder  
 20.9 for available V6

## PASSENGER VOLUME

99.7 cubic feet/seats 5

## CARGO VOLUME<sup>1</sup>

63.7 cubic feet

# DIMENSIONS



62.9"  
 72.5"



112.5"  
 187.8"



62.1" 69.3"<sup>(2)</sup>

# DEALER-INSTALLED ACCESSORIES PERSONALIZE YOUR EQUINOX AT CHEVY.COM/ACCESSORIES



19" Chrome Wheel



Chrome Door Handles



Chrome Outside Mirrors



Custom Molded Front and Rear Splash Guards



Front and Rear All-Weather Floor Mats



Trailer Hitch

<sup>1</sup> Cargo and load capacity limited by weight and distribution. <sup>2</sup> With available roof rack.

## WARRANTY INFORMATION

**100,000-MILE/5-YEAR TRANSFERABLE POWERTRAIN LIMITED WARRANTY.** Every 2013 Chevrolet passenger car, light-duty pickup truck, SUV and crossover comes with a 100,000-mile/5-year (whichever comes first) transferable Powertrain Limited Warranty. Plus, you get 100,000 miles/5 years (whichever comes first) of the 24/7 Roadside Assistance Program, the Courtesy Transportation Program, and much more. See dealer for details.

**NEW VEHICLE LIMITED WARRANTY.** GM vehicles registered in the USA are covered for 36,000 miles/3 years (whichever comes first). The complete vehicle is covered, including tires, towing to your nearest Chevrolet dealership and cosmetic corrosion resulting from defects. Repairs will be made to correct any vehicle defect, and most warranty repairs will be made at no charge. In addition, rust-through corrosion will be covered for 100,000 miles/6 years (whichever comes first). See dealer for details.

**CHEVROLET OWNER CENTER (GMOWNERCENTER.COM/CHEVY).** Register your vehicle with the Chevrolet Owner Center and receive benefits such as online access to your vehicle Owner's Manual, maintenance schedule reminders, service history tracking, warranty and service information, safety information, special offers and privileges, and news and events.

## IMPORTANT INFORMATION

**ENGINES.** Chevrolet products are equipped with engines produced by GM Powertrain or other suppliers to GM worldwide. The engines in Chevrolet products may also be used in other GM makes and models.

**ASSEMBLY.** Chevrolet vehicles and their components are assembled or produced by different operating units of General Motors, its subsidiaries or suppliers to GM worldwide. We sometimes find it necessary to produce Chevrolet vehicles with different or differently sourced components than originally scheduled. Since some options may be unavailable when your vehicle is assembled, we suggest you verify that your vehicle includes the equipment you ordered and that, if there were changes, they are acceptable to you.

**ONSTAR.** OnStar services require vehicle electrical system (including battery), wireless service and GPS satellite signals to be available and operating for features to function properly. OnStar acts as a link to existing emergency service providers. Subscription Service Agreement required. Call 1-888-4ONSTAR (1-888-466-7827) or visit [onstar.com](http://onstar.com) for OnStar Terms and Conditions, Privacy Policy, details and system limitations.

**A NOTE ON CHILD SAFETY.** Always use safety belts and the correct restraint for your child's age and size. Even in vehicles equipped with the Passenger Sensing System, children are safer when properly secured in a rear seat in the appropriate infant, child or booster seat. Never place a rear-facing infant restraint in the front seat of any vehicle equipped with a passenger air bag. See the Owner's Manual and child safety seat instructions for more safety information.

**IMPORTANT WORDS ABOUT THIS CATALOG.** We have tried to make this catalog comprehensive and factual. We reserve the right, however, to make changes at any time, without notice, in prices, colors, materials, equipment, specifications, models and availability. Specifications, dimensions, measurements, ratings and other numbers in this catalog and other printed materials provided at the dealership or affixed to vehicles are approximations based on design and engineering drawings, prototypes and laboratory tests. Your vehicle may differ due to variations in manufacture and equipment. Since some information may have been updated since the time of printing, please check with your Chevrolet dealer for complete details. Chevrolet reserves the right to lengthen or shorten the model year for any product for any reason or to start and end model years at different times.

Certain vehicle features may lose their usefulness over time due to obsolescence from technological changes. Unless otherwise noted, all claims based on GM Compact Crossover segment and latest available competitive information. Excludes other GM vehicles.

**FLEET ORDERS.** Some standard content may be deleted on fleet orders. See dealer for details.

**CHEVY.COM.** Offers shopping tools such as Chevy vehicle information, Build and Price, Find a Vehicle, Request Info, Email Sign-Up, Compare Vehicles, Financial Tools... and much more.

**OWNER SERVICES.** Chevrolet is committed to enhancing the ownership experience through a wide array of programs. For more information about 24-hour Roadside Assistance, Courtesy Transportation, Customer Assistance Center, Chevy Safety, GM Mobility, Chevrolet Owner Center, marketing and incentives, as well as services for GM Card members, visit [chevy.com](http://chevy.com).

**CHEVY.COM/SAFETY.** Chevrolet is committed to keeping you and your family safe—from the start of your journey to your destination. That's why every Chevrolet is designed with a comprehensive list of safety and security features to help give you peace of mind.

**GMMOBILITY.COM (1-800-323-9935).** GM Mobility™ offers financial assistance for eligible adaptive equipment to make automotive travel easier for persons with disabilities or special transportation needs. To learn more about special GM Mobility offers, visit [gmmobility.com](http://gmmobility.com).

**GMCARDMEMBERSERVICES.COM.** Did you know about the family of reward credit cards that can help you get a great deal on a new GM car, light-duty truck, SUV or crossover? With a GM reward card, you accrue earnings on every credit card purchase to use toward the purchase or lease of an eligible new GM vehicle. With three cards to choose from, you're sure to find one that suits you best.

**ECOLOGIC WINDOW LABEL.** As part of our Ecologic™ initiative for environmental responsibility, every 2013 Chevrolet vehicle features a new Ecologic window label detailing some of its fuel-saving technologies, responsible manufacturing processes and end-of-life recyclability. Visit [chevrolet.com/ecologic](http://chevrolet.com/ecologic) for more information.

GM, the GM Logo, Chevrolet, the Chevrolet Logo, and the slogans, emblems, vehicle model names, vehicle body designs and other marks appearing in this catalog are the trademarks and/or service marks of General Motors, its subsidiaries, affiliates or licensors. ©2012 OnStar. All rights reserved. Sirius, XM and all related marks and logos are trademarks of SiriusXM Radio Inc. The Bluetooth word mark is a registered trademark owned by Bluetooth SIG, Inc., and any use of such mark by Chevrolet is under license. ©2012 General Motors. All rights reserved. June 2012

## OWNERSHIP EXTRAS



[chevy.com/warranty](http://chevy.com/warranty)



**ACCESSORIES**  
[chevy.com/accessories](http://chevy.com/accessories)



[onstar.com](http://onstar.com)



[siriusxm.com](http://siriusxm.com)



[facebook.com/chevrolet](http://facebook.com/chevrolet)



[twitter.com/chevrolet](http://twitter.com/chevrolet)



[youtube.com/chevrolet](http://youtube.com/chevrolet)



Equinox LTZ shown in Atlantis Blue Metallic with dealer-installed accessories and other available features.



*chevy.com*