

 [chevy.com](http://chevy.com)




11CHEIMPCAT01



CHEVROLET

2011 Chevrolet Impala 





*“...Chevrolet Impala will thoroughly meet your needs and probably exceed your expectations.”*

KELLEY BLUE BOOK'S KBB.COM<sup>1</sup>

**The Full-Size Car More People Depend On.** It's easy to understand why the Chevrolet Impala is America's No. 1 choice in full-size sedans.<sup>2</sup> For more than 50 years, Impala has delivered proven excellence in a car people keep coming back to.

**29 MPG Hwy.** With its standard 3.5L V6 engine, the 2011 Impala offers a remarkable 29 MPG highway. That's highway mileage Ford Taurus, Chrysler 300 and Dodge Charger can't match.<sup>3</sup>

 Learn more about the Impala at [chevy.com/impala](http://chevy.com/impala).



**A Comprehensive Safety Package.** Impala surrounds you with advanced technologies that include the StabiliTrak Electronic Stability Control System, four-wheel antilock braking system (ABS), Traction Control, frontal- and side-impact air bags,<sup>4</sup> and OnStar<sup>®5</sup> with Automatic Crash Response (standard for the first six months).

**100,000 mile/5-year<sup>6</sup> Transferable Powertrain Limited Warranty.** Impala helps protect you with a 100,000 mile/5-year transferable Powertrain Limited Warranty plus Roadside Assistance and Courtesy Transportation Programs to guarantee the quality.

**Impala LTZ in Black. Shown with available dealer-installed polished stainless steel exhaust tips from Chevrolet Accessories.** <sup>1</sup> For more information, visit [kbb.com](http://kbb.com). Kelley Blue Book is a registered trademark of Kelley Blue Book Co., Inc. <sup>2</sup> Based on R.L. Polk & Co. CYE 2009 Large Sedan Passenger Car Retail Registrations in the U.S. <sup>3</sup> EPA est. MPG hwy.: 2011 Taurus SE 28, 2010 300 Touring 26, 2010 Charger SE 26. <sup>4</sup> Always use safety belts and the correct restraint for your child's age and size. Even in vehicles equipped with the Passenger Sensing System, children are safer when properly secured in a rear seat in the appropriate infant, child or booster seat. Never place a rear-facing infant restraint in the front seat of any vehicle equipped with a passenger air bag. See the Owner's Manual and child safety seat instructions for more safety information. <sup>5</sup> Visit [onstar.com](http://onstar.com) for details and system limitations. OnStar acts as a link to existing emergency service providers. <sup>6</sup> Whichever comes first. See dealer for details.



**Crossover-Like Versatility in a Spacious Sedan.** Impala is the only car in its class offering the versatility of a flip-and-fold-flat rear seat (standard on LTZ; available on LT). The 60/40 seat accommodates three passengers in its normal position. Pull up either seat cushion – or both – to reveal a composite storage tray that runs the entire width of the rear floor. Fold down both rear seatbacks, and a flat load floor is created, providing additional cargo-carrying capability.



Unexpected Spaciousness

*“Flip up the seat bottoms, fold down the seatbacks, and the Impala’s already massive trunk becomes a virtual cargo bed more than six feet long.”*

KELLEY BLUE BOOK’S KBB.COM<sup>1</sup>



**LT Luxury Edition Package** (shown above). Features of this available package include heated front bucket seats with leather appointments; six-way power passenger seat; flip-and-fold-flat rear seat; Bose® premium sound system; XM Radio<sup>2</sup> with one-year trial; Universal Home Remote transmitter; auto-dimming inside rearview mirror; outside power-adjustable, heated mirrors; and rear spoiler.

**More Than 18 Cu. Ft. of Trunk Space.** Impala has a huge 18.6-cu.-ft. trunk.<sup>3</sup> And Impala LS and LT offer available seating for six, an option that’s not available on Ford Taurus, Dodge Charger or Nissan Maxima.

See a flip-and-fold-flat rear seat demonstration at [chevy.com/impala](http://chevy.com/impala). 



*"Both V6 engines strike a nice balance between power and fuel economy."*

U.S. NEWS & WORLD REPORT<sup>1</sup>

**29**  
MPG hwy.

**Unsurpassed Large Sedan V6 MPG.** When running on gas, Impala LS and LT with the 3.5L engine offer V6 fuel economy that's unsurpassed in this class.<sup>2</sup> The 3.9L V6 in LTZ also offers impressive fuel economy – an EPA estimated 27 MPG highway.

**Fuel Comparisons**

EPA est. MPG hwy.

<b>2011 Chevrolet Impala</b>	<b>29</b>
2011 Ford Taurus SE	28
2010 Dodge Charger SE	26
2010 Chrysler 300 Touring	26
2010 Nissan Maxima	26



**E85 FlexFuel-Capable.** The engines on Impala are E85<sup>3</sup> FlexFuel-capable, unlike the engines on any Honda or Toyota car. E85 is a mostly renewable fuel source made primarily from U.S.-grown biomaterial, which can help reduce our dependence on petroleum.

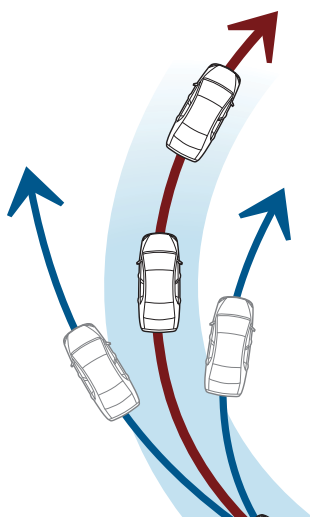
**A Tuned Four-Wheel Independent Suspension.** Impala features a four-wheel independent suspension – specially calibrated to each powertrain and trim level – for an optimum balance of ride and handling.





**OnStar<sup>1</sup> with Automatic Crash Response** standard for the first six months. In certain types of collisions, built-in sensors can automatically alert an Advisor, who is immediately connected into your vehicle and can request that emergency help be sent to your exact GPS location even if you're unable to respond.

**Six Air Bags.** Every 2011 Impala includes six standard air bags:<sup>2</sup> dual-stage frontal air bags, thorax side-impact air bags and head-curtain side-impact air bags.



**The StabiliTrak Electronic Stability Control System**, four-wheel antilock disc brakes and Traction Control are all standard. StabiliTrak helps you stay the course by detecting the difference between the path being steered and the direction the vehicle is actually turning. It then uses the brakes and, if necessary, adjusts engine torque to help keep your vehicle on the desired track.



**Four-Wheel Antilock Brakes** help maintain steering control by reducing wheel lockup during hard braking on most slippery surfaces.

**Safety Cage Construction.** With reinforced steel used for the roof, vertical pillars and side-door beams, the safety cage is designed to help preserve occupant space in a crash.

**100,000 Mile/5-Year<sup>3</sup> Transferable Powertrain Limited Warranty.** That's 40,000 more miles than Toyota or Honda offers. And you have our Roadside Assistance and Courtesy Transportation Programs to guarantee the quality.

**24-Hour Roadside Assistance.** Chevrolet offers a 24-Hour Roadside Assistance Program for a period of 100,000 miles or 5 years, whichever comes first.

**Courtesy Transportation.** This program provides alternate transportation and/or reimbursement of certain transportation expenses for 100,000 miles or 5 years, whichever comes first.

**Impala LTZ in Black.** **1** Visit [onstar.com](http://onstar.com) for details and system limitations. **2** Always use safety belts and the correct restraint for your child's age and size. Even in vehicles equipped with the Passenger Sensing System, children are safer when properly secured in a rear seat in the appropriate infant, child or booster seat. Never place a rear-facing infant restraint in the front seat of any vehicle equipped with a passenger air bag. See the Owner's Manual and child safety seat instructions for more safety information. **3** Whichever comes first. See dealer for details.



**BOSE** Bose® Premium Sound System – Engineered for Impala Acoustics. The eight-speaker Bose sound system features woofers strategically placed in the front doors and rear deck to deliver full, powerful low-frequency sound. A Bose amplifier with proprietary digital signal processing and six channels of custom equalization helps tune the sound specifically for Impala. Standard on LTZ and available on LT with the Luxury Edition Package.

**(((XM))) XM<sup>1</sup> Provides Your Favorites From Coast to Coast.** Enjoy commercial-free music channels from every genre plus the best in sports, news, talk, entertainment and comedy on every drive. A three-month trial is standard on LS and LT; a one-year trial is included on LT with the Luxury Edition Package and is standard on LTZ.

**Bluetooth® at Your Command.** Bluetooth® wireless technology<sup>2</sup> for select phones lets you make, answer and end calls with a tap of the steering wheel controls. Standard on LTZ and LT and now available on LS.

**On Turn-by-Turn Navigation.** With OnStar<sup>3</sup> Turn-by-Turn Navigation, you tell the Advisor your destination – and get directions sent to your vehicle. That's it. See upcoming turns and street names displayed on the Driver Information Center or radio. Wrong turn? Turn-by-Turn knows it and helps get you back on track automatically.

<sup>1</sup> Requires a subscription sold separately by XM after trial period. Available only in the 48 contiguous United States and District of Columbia. Visit [gm.xmradio.com](http://gm.xmradio.com) for details. <sup>2</sup> Go to [gm.com/bluetooth](http://gm.com/bluetooth) to find out which phones are compatible with the vehicle. <sup>3</sup> Visit [onstar.com](http://onstar.com) for coverage map, details and system limitations. Services vary by model and conditions. OnStar acts as a link to existing emergency service providers. <sup>4</sup> For more information, visit [kbb.com](http://kbb.com). Kelley Blue Book is a registered trademark of Kelley Blue Book Co., Inc.



**Protected and Connected with OnStar.**

Experience the safe, simple way to stay connected on the road. OnStar<sup>3</sup> is now standard on most models with the Directions & Connections<sup>®</sup> Plan for the first six months.



**Automatic Crash Response.**

Built-in sensors can automatically alert OnStar for help. Even if you can't respond, an Advisor can request that emergency help be sent to your exact GPS location.



**Emergency Services.**

One push of the red emergency button gives you a priority connection to an OnStar Advisor who can contact emergency services and direct them to your exact location.



**Security Services.**

Stolen Vehicle Assistance, Remote Door Unlock and Remote Horn and Lights are among these services.



**Turn-by-Turn Navigation.**

When you're not exactly sure how to get there, simply push the blue OnStar button and get voice-guided directions downloaded to your vehicle.



**OnStar Savings.**

We can help lower the cost of vehicle ownership with insurance discounts and other ways to save. To learn more, go to [onstar.com/savings](http://onstar.com/savings).



**Vehicle Diagnostics.**

Receive monthly emails on the operating status of your key vehicle systems.



**Hands-Free Calling.**

Make and receive voice-activated calls while keeping your eyes on the road and your hands on the wheel.



*"The wide range of available OnStar packages gives the Impala a leg up over similarly priced competitors."*

KELLEY BLUE BOOK'S KBB.COM<sup>4</sup>

## Colors, Fabrics and Wheels



Black

Victory Red

Summit White

Silver Ice  
Metallic

Gold Mist  
Metallic

Imperial Blue  
Metallic

Cyber Gray  
Metallic

Red Jewel Tintcoat<sup>1</sup>



1



2



3



4



5

### Wheels

1. 17" fascia-spoke painted silver trim wheel (standard on LS)
2. 17" machined-aluminum wheel (standard on LT)
3. 18" machined-face aluminum wheel (standard on LTZ)

### Fabrics



Neutral Cloth



Gray Cloth



Ebony Cloth



Neutral Leather  
Appointments



Gray Leather  
Appointments



Ebony Leather  
Appointments

### Chevrolet Accessories

4. 17" fifteen-spoke cast-chrome aluminum wheel
5. 17" nine-spoke cast-chrome aluminum wheel



All-weather front floor mats



Molded front splash guards



Polished stainless steel  
exhaust tip

<sup>1</sup>Extra-cost color. Not available on LS.

# Impala buyer's guide.

S = Standard O = Optional – = Not Available

## Maximum Capacities

Trunk volume (cu. ft.) <sup>1</sup>	18.6
Fuel tank (gal. approx.)	17
Seating (standard/available on LS and LT)	5/6

## Exterior

	LS	LT	LTZ
Door handles: body-color	S	S	–
Door handles: chrome	–	–	S
Foglamps: integral, in front fascia	–	S	S
Mirrors: body-color, power-adjustable	S	S	–
Mirrors: body-color, power-adjustable, heated	–	O <sup>2</sup>	S
Moldings: body-color, body-side	S	S	S
Moldings: body-color, rocker	S	S	S
Spoiler: rear	–	O <sup>3</sup>	S

## Engines/Chassis

	LS	LT	LTZ
Battery: maintenance-free, with rundown protection	S	S	S
Engine: 3.5L V6 with Variable Valve Timing, 211 hp @ 5800 rpm, 216 lb.-ft. of torque @ 4000 rpm, E85 FlexFuel-capable <sup>4</sup>	S	S	–
Engine: 3.9L V6 with Variable Valve Timing, 230 hp @ 5700 rpm, 235 lb.-ft. of torque @ 3200 rpm, E85 FlexFuel-capable <sup>4</sup>	–	–	S
Engine block heater	O	O	O
Exhaust: single, stainless steel	S	S	–
Exhaust: dual-outlet, stainless steel	–	–	S
Oil-Life Monitor	S	S	S
Steering: power, rack-and-pinion	S	S	S
Suspension: four-wheel independent, Touring	S	S	–
Suspension: four-wheel independent, Luxury-Tuned	–	–	S
Transmission: four-speed automatic, electronically controlled with overdrive	S	S	S

## Interior

Air conditioning: single-zone, manual climate control and air filtration system	S	–	–
Air conditioning: dual-zone, manual climate controls, with individual settings for driver and right-front passenger and air filtration system	–	S	S
Defogger: rear-window, electric	S	S	S
Door locks: power-programmable, with lockout protection	S	S	S
Instrumentation: analog, four-gauge cluster with speedometer, tachometer, coolant temperature, fuel gauge, trip odometer and Driver Information Center	S	–	–
Instrumentation: analog, deluxe four-gauge cluster with chrome trim, speedometer, tachometer, coolant temperature, fuel gauge, trip odometer, Driver Information Center, outside temperature display and compass	–	S	S
Lighting: center-mounted dome and rear reading lamps	S	S	S
Luxury Edition Package: heated front bucket seats with leather appointments; six-way power front passenger seat; flip-and-fold-flat rear seat; Bose eight-speaker sound system; rear spoiler; XM Radio <sup>5</sup> with one-year trial; inside auto-dimming rearview mirror; Universal Home Remote transmitter; and heated, power-adjustable outside mirrors	–	O	–
Mirror: inside, rearview, manual day/night	S	S	–
Mirror: inside, rearview, auto-dimming	–	O <sup>2</sup>	S
Steering wheel: leather-wrapped with audio controls	O <sup>6</sup>	S	S
Sunroof: power, tilt/sliding with sunshade	–	O <sup>7</sup>	O
Trunk release: remote	S	S	S
Universal Home Remote transmitter	–	O <sup>3</sup>	S
Visors: front, with vanity mirrors	S	–	–
Visors: front, with illuminated vanity mirrors	–	S	S

## Safety and Security

	LS	LT	LTZ
Air bags: <sup>8</sup> dual-stage frontal (includes Passenger Sensing System) and thorax side-impact, driver and front passenger; head-curtain side-impact, front and rear outboard seating positions	S	S	S
Brakes: four-wheel antilock, four-wheel disc (includes Traction Control)	S	S	S
Daytime Running Lamps	S	S	S
Door locks: rear, child security	S	S	S
OnStar: <sup>9</sup> with Directions & Connections Plan standard for the first six months	S	S	S
Remote Keyless Entry	S	–	–
Remote vehicle starter system, includes Remote Keyless Entry	–	S	S
StabiliTrak Electronic Stability Control System	S	S	S
Tire Pressure Monitor (excludes spare tire)	S	S	S

## Seating

Front buckets, cloth, with six-way power driver seat	S	S	–
Front 40/20/40 split-bench, cloth, with six-way power driver seat and steering column shifter	O	O <sup>10</sup>	–
Front buckets, heated, with leather appointments, six-way driver and six-way passenger power seat adjusters (eight-way power driver seat on LTZ)	–	O <sup>2</sup>	S
Rear bench seat, fixed	S	S	–
Rear seat: flip-and-fold-flat	–	O <sup>2</sup>	S

## Audio Systems

AM/FM stereo with CD/MP3 player and auxiliary audio input jack	S	S	S
Bluetooth <sup>®</sup> wireless technology <sup>11</sup> for select phones	O	S	S
Six-speaker sound system	S	S	–
Bose premium eight-speaker sound system	–	O <sup>2</sup>	S
XM Radio: <sup>5</sup> with three trial months	S	S	–
XM Radio: <sup>5</sup> with one-year trial	–	O <sup>2</sup>	S

## Wheels

17" fascia-spoke, painted silver trim	S	–	–
17" machined-aluminum	–	S	–
18" machined-face aluminum	–	–	S

## Dealer-Installed Chevrolet Accessories

17" Nine-Spoke Cast-Chrome Aluminum Wheels	O	O	O
17" Fifteen-Spoke Cast-Chrome Aluminum Wheels	O	O	O
17" Six Split-Spoke Polished-Aluminum Wheels	O	O	O
All-Weather Front Floor Mats	O	O	O
Polished Stainless Steel Exhaust Tip	O	O	O
Side-Window Deflectors	O	O	O
Sport-Styled Rear Spoiler	O	O	S

**1** Cargo and load capacity limited by weight and distribution. **2** Requires available Luxury Edition Package. **3** Included with available Luxury Edition Package. **4** E85 is a combination of 85% ethanol and 15% gasoline. Go to [chevy.com/biofuels](http://chevy.com/biofuels) to see if there is an E85 fuel station near you. **5** Requires a subscription sold separately by XM after trial period. Available only in the 48 contiguous United States and District of Columbia. Visit [gm.xmradio.com](http://gm.xmradio.com) for details. **6** Requires available Bluetooth wireless technology. **7** Requires available Universal Home Remote transmitter. **8** Always use safety belts and the correct restraint for your child's age and size. Even in vehicles equipped with the Passenger Sensing System, children are safer when properly secured in a rear seat in the appropriate infant, child or booster seat. Never place a rear-facing infant restraint in the front seat of any vehicle equipped with a passenger air bag. See the Owner's Manual and child safety seat instructions for more safety information. **9** Visit [onstar.com](http://onstar.com) for coverage map, details and system limitations. Services vary by model and conditions. **10** Not available with Luxury Edition Package. **11** Go to [gm.com/bluetooth](http://gm.com/bluetooth) to find out which phones are compatible with the vehicle.

# Important information.

**100,000 MILE/5-YEAR TRANSFERABLE POWERTRAIN LIMITED WARRANTY.** Every 2011 Chevrolet passenger car, light-duty truck, SUV and crossover comes with a 100,000 mile/5-year (whichever comes first) transferable Powertrain Limited Warranty. Plus, you get 100,000 miles/5 years (whichever comes first) of the 24/7 Roadside Assistance Program and the Courtesy Transportation Program and much more. See dealer for details.

**NEW VEHICLE LIMITED WARRANTY.** GM vehicles registered in the U.S.A. are covered for 3 years/36,000 miles (whichever comes first). The complete vehicle is covered, including tires, towing to your nearest Chevrolet dealership and cosmetic corrosion resulting from defects. Repairs will be made to correct any vehicle defect, and most warranty repairs will be made at no charge. In addition, rust-through corrosion will be covered for 6 years/100,000 miles (whichever comes first). See dealer for details.

**ENGINES.** Chevrolet products are equipped with engines produced by GM Powertrain or other suppliers to GM worldwide. The engines in Chevrolet products may also be used in other GM makes and models.

**ASSEMBLY.** Chevrolet vehicles and their components are assembled or produced by different operating units of General Motors, its subsidiaries or suppliers to GM worldwide. We sometimes find it necessary to produce Chevrolet vehicles with different or differently sourced components than originally scheduled. Since some options may be unavailable when your vehicle is assembled, we suggest you verify that your vehicle includes the equipment you ordered and that, if there were changes, they are acceptable to you.

**ONSTAR.** OnStar services require vehicle electrical system (including battery), wireless service and GPS satellite signals to be available and operating for features to function properly. OnStar acts as a link to existing emergency service providers. Subscription Service Agreement required. Call 1-888-4ONSTAR (1-888-466-7827) or visit [onstar.com](http://onstar.com) for OnStar Terms and Conditions, Privacy Statement, and details and system limitations.

**A NOTE ABOUT CHILD SAFETY.** Always use safety belts and the correct restraint for your child's age and size. Even in vehicles equipped with the Passenger Sensing System, children are safer when properly secured in a rear seat in the appropriate infant, child or booster seat. Never place a rear-facing infant restraint in the front seat of any vehicle equipped with a passenger air bag. See the Owner's Manual and child safety seat instructions for more safety information.

**IMPORTANT WORDS ABOUT THIS CATALOG.** We have tried to make this catalog comprehensive and factual. We reserve the right, however, to make changes at any time, without notice, in prices, colors, materials, equipment, specifications, models and availability. Specifications, dimensions, measurements, ratings and other numbers in this catalog and other printed materials provided at the dealership or affixed to vehicles are approximates based upon design and engineering drawings, prototypes and laboratory tests. Your vehicle may differ due to variations in manufacture and equipment. Since some information may have been updated since the time of printing, please check with your Chevrolet dealer for complete details. Chevrolet reserves the right to lengthen or shorten the model year for any product for any reason or to start and end model years at different times. Certain vehicle features may lose their usefulness over time due to obsolescence from technological changes. Unless otherwise noted, all claims based on GM Large Car segment and latest available competitive information. Excludes other GM vehicles.

GM, the GM Logo, Chevrolet, the Chevrolet Logo, and the slogans, emblems, vehicle model names, vehicle body designs and other marks appearing in this catalog are the trademarks and/or service marks of General Motors, its subsidiaries, affiliates or licensors. SIRIUS, XM and all related marks and logos are trademarks of SIRIUS XM Radio Inc. and its subsidiaries. The Bluetooth word mark is a registered trademark owned by Bluetooth SIG, Inc. and any use of such mark by Chevrolet is under license. iPhone is a registered trademark of Apple, Inc. All rights reserved. Bose is a registered trademark of the Bose Corp. ©2010 OnStar. All rights reserved. ©2010 General Motors. All rights reserved. Litho in USA.

August 2010

At Chevrolet, giving you a completely satisfying ownership experience is our top priority. That's why if you ever need assistance, feel free to contact us at these web sites or phone numbers.

**CHEVY.COM.** Offers shopping tools such as Build and Price, Find a Vehicle, Request Info, Email Sign-Up, Compare Vehicles, Financial Tools...and much more.

**24-HOUR ROADSIDE ASSISTANCE PROGRAM (1-800-CHEV-USA).** The Chevrolet Roadside Assistance Program provides you with the following services for 100,000 miles or 5 years (whichever comes first): Emergency Towing (to closest Chevy dealer from a legal roadway), Lockout Service (keys locked inside vehicle), Flat Tire Changes (spare installed), Fuel Delivery (\$5 worth of fuel delivered on the road) and Jump Starts (at home or on the road). For specific terms and conditions, please contact your Chevrolet Roadside Assistance advisor at 1-800-243-8872. Some services may incur costs.

**COURTESY TRANSPORTATION PROGRAM.** Ask your Chevrolet dealer for Courtesy Transportation if you leave your vehicle for extended repairs under the New Vehicle Limited Warranty or Powertrain Limited Warranty. Ask if you qualify for expense reimbursement and/or vehicle rental. Services vary by dealer.

**CHEVROLET CUSTOMER ASSISTANCE CENTER (1-800-222-1020).** Talk directly to customer relationship managers who can handle any inquiries related to vehicle operation, warranty coverages, or product or service concerns you may have. Please refer to your Owner's Manual for Customer Assistance information.

**CHEVY.COM/SAFETY.** Chevrolet is committed to keeping you and your family safe — from the start of your journey to your destination. That's why every Chevrolet is designed with a comprehensive list of safety and security features to help give you peace of mind.

**GMMOBILITY.COM (1-800-323-9935).** GM Mobility offers financial assistance for eligible adaptive equipment to make automotive travel easier for persons with disabilities or special transportation needs. To learn more about special GM Mobility offers, visit [gmmobility.com](http://gmmobility.com).

**CHEVROLET OWNER CENTER (GMOWNERCENTER.COM/CHEVY).** Register your vehicle with the Chevrolet Owner Center, and receive benefits such as online access to your vehicle Owner's Manual, maintenance schedule reminders, service history tracking, warranty and service information, safety information, special offers and privileges, and news and events.

**MARKETING AND INCENTIVES (CHEVY.COM/SPECIALOFFERS).** Call 1-800-950-CHEV (1-800-950-2438) or visit [chevy.com/specialoffers](http://chevy.com/specialoffers) for new product, current incentive and marketing program information.

**GMCARDMEMBERSERVICES.COM.** Did you know about the family of reward credit cards that can help you get a great deal on a new GM car, light-duty truck, SUV or crossover? With a GM reward card, you accrue earnings on every credit card purchase to use toward the purchase or lease of an eligible, new GM vehicle. With three cards to choose from, you're sure to find one that suits you best.

## CHEVROLET

For more information about ownership extras, please visit the web sites listed.



[onstar.com](http://onstar.com)



ACCESSORIES

[chevy.com/accessories](http://chevy.com/accessories)



[gm.xmradio.com](http://gm.xmradio.com)



100,000 MILE | 5-YEAR  
POWERTRAIN WARRANTY

[chevy.com/warranty](http://chevy.com/warranty)



## The reviews are in.

*"A comfortable cabin and a smooth ride make the Impala an appealing large family sedan..."*

EDMUNDS.COM

*"With supportive seats front and rear, the Impala remains comfortable after several hours and hundreds of miles."*

KELLEY BLUE BOOK'S KBB.COM<sup>1</sup>

*"...a fine balance between performance and fuel efficiency."<sup>2</sup>*

EDMUNDS.COM



*Now see what owners are saying – or have your own say.*



Become a fan of Chevrolet at [facebook.com/chevrolet](https://facebook.com/chevrolet)



Watch us on [youtube.com/chevrolet](https://youtube.com/chevrolet)



Follow us on [twitter.com/chevrolet](https://twitter.com/chevrolet)

<sup>1</sup> For more information, visit [kbb.com](https://kbb.com). Kelley Blue Book is a registered trademark of Kelley Blue Book Co., Inc.  
<sup>2</sup> EPA estimated 19 MPG city, 29 highway with 3.5L V6 engine.

Learn more about Impala at [chevy.com/impala](https://chevy.com/impala). 