

**TRAX 2017**

**CHEVROLET**





Trax Premier in Blue Topaz Metallic.



## **DISCOVER THE SMALL SUV BUILT FOR THE BIG CITY.**

The new 2017 Chevrolet Trax brings good looks and street smarts together in a vehicle built for active city life. Athletic, contemporary styling helps you make an entrance wherever you go. A refined, comfortable interior takes the edge off the daily commute and adds a little more fun to every trip.

Connectivity is personalized with support for Apple CarPlay™<sup>1</sup> and Android Auto™<sup>1</sup> that provides a simple and smart way to use some of your phone's features through the standard 7-inch diagonal color touch-screen display. A 5-Star Overall Vehicle Score for safety<sup>2</sup> from NHTSA and available advanced safety technologies mean you're ready to take on whatever adventure lies around the next corner.

<sup>1</sup> Vehicle user interfaces are products of Apple and Google and their terms and privacy statements apply. Requires compatible smartphone and data plan rates apply. <sup>2</sup> Government 5-Star Safety Ratings are part of the U.S. Department of Transportation's New Car Assessment Program ([www.SaferCar.gov](http://www.SaferCar.gov)).

**FIND NEW ROADS™**



## EXTERIOR DESIGN



Trax Premier in Blue Topaz Metallic.

**ATTRACTIVE CAPABILITY.** Trax has been redesigned with a strong, sporty look and the utility to carry your latest find, camping gear, or almost anything else you need on your travels. A chrome-accented dual-port grille with a sweeping headlamp design makes a memorable first impression.

The rearward-swept roofline is accentuated with bright-finished roof rack rails, standard on LT and Premier. Available bright-finished accents on door handles, beltline moldings and the rear liftgate punctuate the look. The story continues with a restyled rear and new taillamp details.



**1. BRILLIANT FUTURE.** See what's ahead of you with a new headlamp design that adds flair to function. LED signature daytime running lamps are standard on LT and Premier.



**2. WHEELS OF CHANGE.** All-new 18-inch aluminum wheels are standard on Trax Premier.



**3. LOOK GOOD COMING AND GOING.** LED signature taillamps complete the sporty, sophisticated look and are standard on LT and Premier.



## INTERIOR DESIGN



Trax Premier interior  
in Jet Black leatherette.

### **CONTEMPORARY COMFORT.**

The thoughtfully designed interior is as comfortable as it is stylish. Seats with contrast stitching add to the modern look and feel. Chase chills away with heated driver and front passenger seats, standard on Premier.

**COMMANDING VIEWS.** The classic Chevrolet dual-cockpit design is enhanced by a new instrument panel that provides the driver with at-a-glance access to important functions. True White backlighting is one more unexpectedly refined detail.

**SIT BACK AND ENJOY.** Soft touch materials and Piano Black accents add a heightened sense of sophisticated comfort to the interior.



**1. DISPLAY OF POWER.** A new instrument panel design and driver display features a contemporary gauge cluster with an analog speedometer and a Driver Information Center that gives you a read on tire pressure for all four tires, oil life, fuel range and more.

**2. NO FUMBLING WITH KEYS.**

Your morning balancing act of keys and coffee just got easier. Keyless Open and Start is standard on Premier and available on LT.

**3. ROOM FOR FIVE.** Spacious 5-passenger seating gives you and your passengers plenty of personal space.







**ROOM WHEN YOU NEED IT MOST.** Ever had to move something, but couldn't get it in your vehicle? Trax offers plenty of cargo space. There's 48.4 cu. ft.<sup>1</sup> of cargo room with the rear seats folded down and even more cargo space with the fold-flat front passenger seat – large enough to carry items up to eight feet long.

**FOLD DOWN AND LOAD IN.** Versatility is just one virtue of the modern design of Trax. With a 60/40 split-folding rear seat and fold-flat front passenger seat, you have eight different ways to carry passengers and other precious cargo.

<sup>1</sup> Cargo and load capacity limited by weight and distribution.





**Apple CarPlay COMPATIBILITY.**

With Apple CarPlay,<sup>1</sup> you can simply and smartly connect with some of your most used iPhone® features, including Maps,

Music, Messages and Phone, right on your Trax display. You can even interact with some of your favorite audio apps like iHeartRadio<sup>2</sup> and Spotify<sup>2</sup>

**LEADING THE WAY.** Chevrolet is the first and only car company to offer built-in 4G LTE Wi-Fi<sup>3</sup> to cars, trucks and crossovers, providing the ability to

seamlessly connect your smart devices and vehicles to the Internet. It offers great signal quality and bandwidth for up to seven devices.

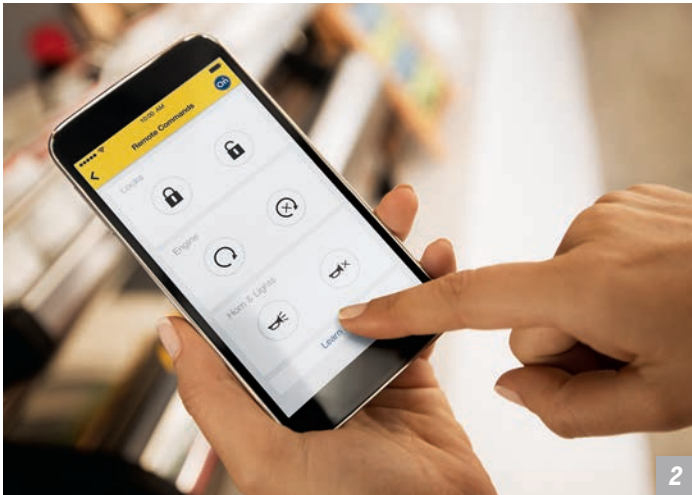
<sup>1</sup> Vehicle user interfaces are products of Apple and Google and their terms and privacy statements apply. Requires compatible smartphone and data plan rates apply. <sup>2</sup> Data plan rates apply. <sup>3</sup> Requires a compatible mobile device, active OnStar service and data plan. 4G LTE service available in select markets. Visit [onstar.com](http://onstar.com) for coverage map, details and system limitations. Data plans provided by AT&T.

Apple CarPlay is a trademark of Apple Inc. iPhone is a trademark of Apple Inc., registered in the U.S. and other countries.





1



2



3

### **1. ANDROID AUTO COMPATIBILITY.**

You can quickly and intuitively interact with select smartphone apps with support for Android Auto.<sup>1</sup> This system takes some of your compatible Android phone's features and puts them on the Chevrolet MyLink<sup>2</sup> display in a smart, simple manner. You can access your phone, text messages, music, navigation and more.

### **2. KEEP IN TOUCH WITH YOUR TRAX.**

Just download the myChevrolet Mobile App<sup>3</sup> to your compatible smartphone to start/turn off your Trax (if properly equipped), lock/unlock your vehicle's doors, send destinations to your available OnStar<sup>®</sup> Turn-by-Turn Navigation,<sup>4</sup> view key vehicle diagnostic information, set parking reminders and more.

**3. STAY CHARGED UP.** Conveniently charge your compatible devices. The available auxiliary 12-volt power outlet, two USB ports<sup>5</sup> and a 110-volt power outlet located in the rear of the center console ensure you remain plugged in to what you need.

<sup>1</sup> Vehicle user interface is a product of Google and its terms and privacy statements apply. Requires compatible smartphone running Android 5.0 Lollipop or higher and data plan rates apply. <sup>2</sup> MyLink functionality varies by model. Full functionality requires compatible Bluetooth and smartphone, and USB connectivity for some devices. <sup>3</sup> Requires active OnStar service, compatible device, factory-installed remote start and power locks. Data rates apply. Visit [onstar.com](http://onstar.com) for details and system limitations. <sup>4</sup> Requires Guidance Plan or Navigation Add-On Plan. Visit [onstar.com](http://onstar.com) for coverage map. <sup>5</sup> Not compatible with all devices.

Android Auto and Google Maps are trademarks of Google Inc.



## SAFETY



**SAFETY STARTS WITH YOU.** Safety features are no substitute for the driver's responsibility to operate the vehicle in a safe manner. The driver should remain attentive to traffic, surroundings and road conditions at all times. Read the vehicle Owner's Manual for important feature limitations and information.



## ADVANCED SAFETY TECHNOLOGY HELPS COVER ALL THE ANGLES.



**FORWARD COLLISION ALERT.** This available feature continually monitors how close your vehicle is to the vehicle in front of you. If the system determines that a front-end collision with a detected vehicle is imminent, it alerts the driver to a potential crash. It also warns the driver if their Trax is following a detected vehicle too closely.



**LANE DEPARTURE WARNING.** If you unintentionally change lanes without a turn signal, this available camera-based system sends an alert. The camera, mounted near the inside rearview mirror, reads traffic lane markings when identifiable and provides audible and visual alerts.



**SIDE BLIND ZONE ALERT.** With radar sensors on both sides of the vehicle, available Side Blind Zone Alert helps to warn you when vehicles are in your side mirror blind zones and indicates their presence with LED-lit symbols in the exterior mirrors.



**REAR CROSS TRAFFIC ALERT.** This available feature alerts you to crossing traffic behind your Trax when backing up. Audible warnings, as well as visual alerts on the rear vision camera screen, are triggered if approaching vehicles are detected.



**REAR VISION CAMERA.** Standard on Trax, the rear vision camera displays a view of the area immediately behind the vehicle on the 7-inch diagonal color touch-screen – making it easier to see what’s behind you while backing up.



**REAR PARK ASSIST.** This available feature helps you back up by sounding an audible alert and providing visual indication on the rear vision camera display when it detects certain stationary objects in close proximity behind the vehicle.



**10 STANDARD AIR BAGS.** That’s more standard air bags<sup>1</sup> than any other competitor in this class. Every Trax includes dual-stage frontal and knee air bags for driver and front passenger, head-curtain side-impact air bags for front and rear outboard passengers, and front and rear seat-mounted side air bags.

**ONSTAR AUTOMATIC CRASH RESPONSE?** In a crash, built-in sensors can alert a specially trained OnStar Advisor, who is connected into your Trax to see if you need help – even if you can’t ask for it. Advisors can use GPS technology to pinpoint your location and request emergency help. Automatic Crash Response is included in the OnStar Guidance Plan,<sup>3</sup> standard for the first three months.

**5-STAR SAFETY RATING.<sup>4</sup>** The 2017 Chevrolet Trax has earned a 5-Star Overall Vehicle Score for safety. Government 5-Star Safety Ratings are part of the National Highway Traffic Safety Administration’s (NHTSA) New Car Assessment Program ([www.SaferCar.gov](http://www.SaferCar.gov)).

<sup>1</sup> A NOTE ON CHILD SAFETY: Always use safety belts and the correct child restraint for your child’s age and size, even with air bags. Even in vehicles equipped with the Passenger Sensing System, children are safer when properly secured in a rear seat in the appropriate infant, child or booster seat. Never place a rear-facing infant restraint in the front seat of any vehicle equipped with an active frontal air bag. See the Owner’s Manual and the child safety seat instructions for more safety information. <sup>2</sup> Visit [onstar.com](http://onstar.com) for vehicle availability, details and system limitations. OnStar acts as a link to existing emergency service providers. Not all vehicles may transmit all crash data. <sup>3</sup> Visit [onstar.com](http://onstar.com) for coverage map, details and system limitations. <sup>4</sup> Government 5-Star Safety Ratings are part of the U.S. Department of Transportation’s New Car Assessment Program ([www.SaferCar.gov](http://www.SaferCar.gov)).



**PERFORMANCE**

# TURBOCHARGE YOUR LIFE.



<sup>1</sup> EPA-estimated 25 MPG city/33 highway with FWD, 24 MPG city/30 highway with available AWD.

Trax Premier in Blue Topaz Metallic.

#### **TURBOCHARGED PERFORMANCE.**

The power to merge and pass with confidence comes standard, courtesy of the ECOTEC® 1.4L turbocharged engine paired with an electronically controlled 6-speed automatic transmission.

#### **33 MPG HIGHWAY<sup>1</sup> WITH FRONT-WHEEL DRIVE.**

Efficient and exciting are not mutually exclusive ideas. FWD offers a remarkable 25 MPG city<sup>1</sup> and 33 MPG highway. This can mean fewer stops at the gas station. And really, don't you have more interesting places to go?

#### **AVAILABLE ALL-WHEEL DRIVE.**

Responsive and agile, Trax makes it easy to navigate city streets. Front-wheel drive (FWD) with Electronic Traction Control is standard. For even more sure-footed traction, the available all-wheel-drive (AWD) system engages

automatically when accelerating from a standing start. This system automatically shifts to FWD mode when the system detects there is no wheel slip, maximizing efficiency. Trax AWD also offers a smooth-going 30 MPG highway<sup>1</sup>



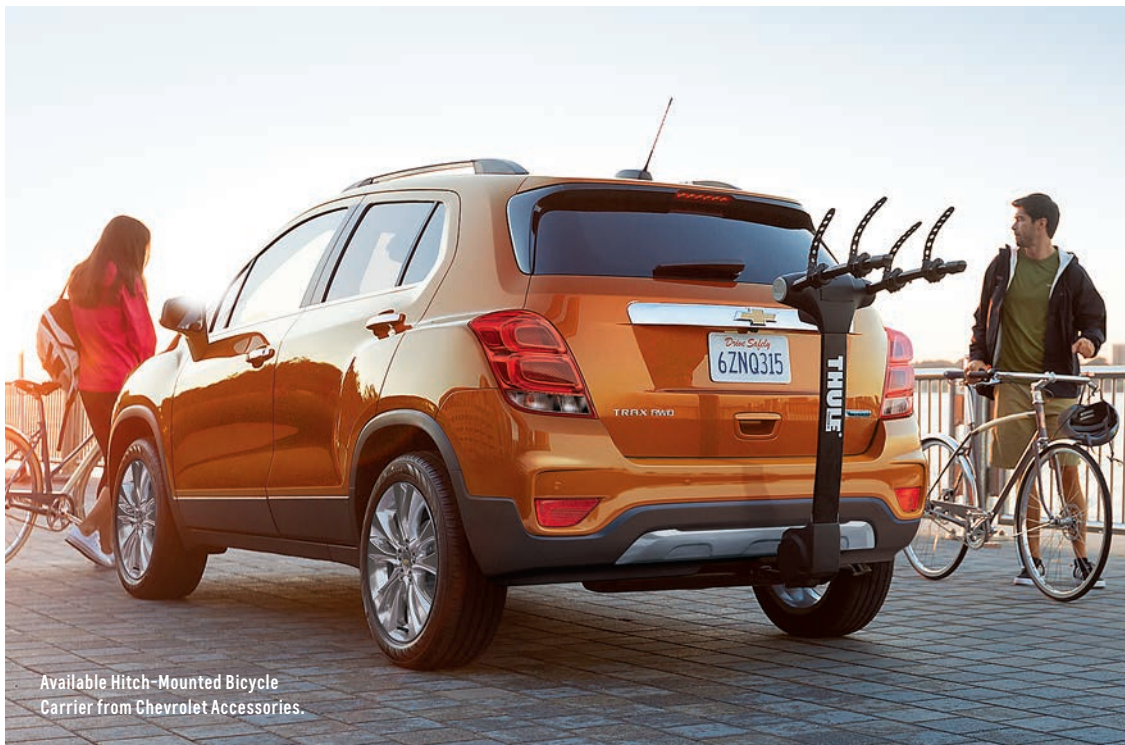
## SPECIAL FEATURES



Available Jet Black leatherette seating.



Sunroof, available on Premier and on LT with the available Sun and Sound Package.



Available Hitch-Mounted Bicycle Carrier from Chevrolet Accessories.



Side Blind Zone Alert included in the available Driver Confidence Package.



## WHEELS



18" Aluminum (Standard on Premier)



16" Steel with Painted Wheel Cover  
(Standard on LS FWD)



16" Painted-Aluminum  
(Standard on LS AWD and LT)



## COLORS



SUMMIT WHITE



SILVER ICE METALLIC<sup>1</sup>



NIGHTFALL GRAY METALLIC<sup>2</sup>



RED HOT<sup>2</sup>



CRIMSON METALLIC



ORANGE BURST METALLIC<sup>2,3</sup>



BLUE TOPAZ METALLIC<sup>1</sup>



MOSAIC BLACK METALLIC

<sup>1</sup> Not available with Jet Black/Brandy interior. <sup>2</sup> Not available on LS. <sup>3</sup> Extra-cost color.



**FABRICS**



Jet Black Leatherette<sup>1</sup>



Light Ash Gray Leatherette with Black Leatherette Accents<sup>1</sup>



Brandy Leatherette with Black Leatherette Accents<sup>1</sup>

<sup>1</sup> Standard on Premier.



**FABRICS (CONTINUED)**



Light Ash Gray Deluxe Cloth and Leatherette with Black Leatherette Accents<sup>1</sup>



Brandy Deluxe Cloth and Leatherette with Black Leatherette Accents<sup>1</sup>



Jet Black Deluxe Cloth and Leatherette with Black Leatherette Accents<sup>1</sup>



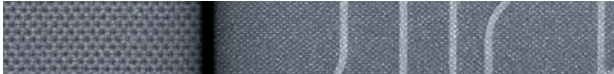
Light Ash Gray Deluxe Cloth with Black Deluxe Cloth Accents<sup>2</sup>



Brandy Deluxe Cloth with Black Deluxe Cloth Accents<sup>2</sup>



Jet Black Deluxe Cloth<sup>2</sup>



Light Ash Gray Cloth with Black Cloth Accents<sup>3</sup>



Jet Black Cloth<sup>3</sup>



<sup>1</sup> Available on LT; requires available LT Convenience Package. <sup>2</sup> Standard on LT. <sup>3</sup> Standard on LS.



## SELECT VEHICLE FEATURES

### TRAX LS

ECOTEC 1.4L turbocharged DOHC 4-cylinder engine
6-speed automatic transmission
4-wheel antilock brakes (front disc, rear drum)
4-wheel antilock disc brakes (AWD models)
10 air bags <sup>1</sup> including frontal and knee for driver and front passenger, side-impact seat-mounted and roof rail-mounted for front and rear outboard seating positions; includes Passenger Sensing System
OnStar Guidance Plan <sup>2</sup> (standard for the first three months, trial excludes Hands-Free Calling minutes), includes Automatic Crash Response and Turn-by-Turn Navigation
StabiliTrak <sup>®</sup> Electronic Stability Control System with Traction Control
Theft-deterrent system
Halogen reflector headlamps with automatic exterior lamp control
Outside power-adjustable manual-folding body-color mirrors with Black base
Rear vision camera
Black beltline moldings
Body-color door handles
16" steel wheels with painted wheel covers (FWD models)
16" aluminum wheels (AWD models)
Chevrolet MyLink <sup>3</sup> Radio with 7-inch diagonal color touch-screen display, AM/FM stereo with seek-scan and digital clock, includes Bluetooth <sup>®</sup> audio streaming <sup>4</sup> for music and select phones; featuring Android Auto <sup>™</sup> and Apple CarPlay <sup>™</sup> compatibility <sup>5</sup>
Two USB ports <sup>6</sup> and auxiliary input jack
6-speaker sound system
Steering wheel-mounted audio and phone interface controls
Driver Information Center with 3.5-inch diagonal monochromatic display
Single-zone manual climate control with air conditioning
Power windows with driver express-up/-down and front passenger and rear express-down features

### TRAX LS (CONTINUED)

Power-programmable door locks with lockout protection
Remote Keyless Entry with panic alarm
4-way manual driver-seat adjuster with power lumbar control
Front bucket seats with cloth seating
Fold-flat front passenger seat
60/40 split-bench folding rear seat
Auxiliary 12-volt power outlet
11 storage compartments
Cargo security cover, rigid, removable
Front and rear carpeted floor mats
OnStar 4G LTE and built-in Wi-Fi <sup>®</sup> hotspot for up to seven devices <sup>7</sup> ; includes data trial for 3 months or 3 GB (whichever comes first)

### TRAX LT

In addition to or replacing LS features, LT includes:

LED daytime running lamps
Projector-style halogen headlamps with automatic exterior lamp control
LED taillamps
Outside power-adjustable manual-folding body-color mirrors
Chrome beltline moldings
Front and rear Silver-painted skid plates
Roof rack side rails
Deep-tinted rear windows and liftgate glass
16" aluminum wheels
SiriusXM Satellite Radio <sup>8</sup> All Access Package with 3-month trial subscription
110-volt power outlet located on rear of center console
Remote vehicle starter system
Cruise control
Front passenger underseat storage drawer
Deluxe Cloth seating

### TRAX PREMIER

In addition to or replacing LT features, Premier includes:

Driver Confidence Package: Side Blind Zone Alert, Rear Cross Traffic Alert and Rear Park Assist
Foglamps
Body-color door handles with chrome accent
Chrome liftgate accents
Bright sill plate covers
18" aluminum wheels
Keyless Open and Start
7-speaker Bose <sup>®</sup> premium audio system, including subwoofer
Auto-dimming inside rearview mirror
6-way power driver-seat adjuster with power lumbar control
Heated driver and front passenger seats
Leather-wrapped 3-spoke steering wheel
Leatherette seating

<sup>1</sup> A NOTE ON CHILD SAFETY: Always use safety belts and the correct child restraint for your child's age and size, even with air bags. Even in vehicles equipped with the Passenger Sensing System, children are safer when properly secured in a rear seat in the appropriate infant, child or booster seat. Never place a rear-facing infant restraint in the front seat of any vehicle equipped with an active frontal air bag. See the Owner's Manual and the child safety seat instructions for more safety information.

<sup>2</sup> Visit [onstar.com](http://onstar.com) for coverage map, details and system limitations. OnStar acts as a link to existing emergency service providers.

<sup>3</sup> MyLink functionality varies by model. Full functionality requires compatible Bluetooth and smartphone, and USB connectivity for some devices.

<sup>4</sup> Visit [my.chevrolet.com/learn](http://my.chevrolet.com/learn) for vehicle and smartphone compatibility.

<sup>5</sup> Vehicle user interfaces are products of Apple and Google and their terms and privacy statements apply. Requires compatible smartphone and data plan rates apply.

<sup>6</sup> Not compatible with all devices.

<sup>7</sup> Requires a compatible mobile device, active OnStar service and data plan. 4G LTE service available in select markets. Visit [onstar.com](http://onstar.com) for coverage map, details and system limitations. Data plans provided by AT&T.

<sup>8</sup> If you decide to continue service after your trial, the subscription plan you choose will automatically renew thereafter and you will be charged according to your chosen payment method at then-current rates. Fees and taxes apply. To cancel you must call SiriusXM at 1-866-635-2349. See SiriusXM Customer Agreement for complete terms at [siriusxm.com](http://siriusxm.com). All fees and programming subject to change.



# SPECIFICATIONS

● STANDARD ○ AVAILABLE – NOT AVAILABLE

	LS	LT	PREMIER
<b>EXTERIOR</b>			
Door handles: Body-color	●	●	–
Body-color with chrome accent	–	○ <sup>1</sup>	●
Foglamps	–	–	●
Headlamps: Halogen composite	●	–	–
Halogen projector-style	–	●	●
Automatic exterior lamp control	●	●	●
Mirrors: Power-adjustable, manual-folding, body-color with Black base	●	–	–
Heated, power-adjustable, manual-folding, body-color	–	●	●
Front and rear Silver-painted skid plates	–	●	●
<b>ENGINE/CHASSIS</b>			
Engine: ECOTEC 1.4L turbocharged 4-cylinder; 138 hp @ 4900 rpm, 148 lb.-ft. of torque @ 1850 rpm	●	●	●
Transmission: 6-speed automatic	●	●	●
All-wheel drive	○	○	○
<b>SAFETY &amp; SECURITY</b>			
10 air bags: <sup>2</sup> Frontal and knee for driver and front passenger, side-impact seat-mounted and roof rail-mounted for front and rear outboard seating positions; includes Passenger Sensing System	●	●	●
LATCH (Lower Anchors and Tethers for Children) for child safety seats	●	●	●
OnStar Guidance Plan <sup>3</sup> (standard for the first three months, trial excludes Hands-Free Calling minutes), includes Automatic Crash Response and Turn-by-Turn Navigation	●	●	●
Rear Park Assist	–	○ <sup>4</sup>	●
Side Blind Zone Alert	–	○ <sup>4</sup>	●
Rear Cross Traffic Alert	–	○ <sup>4</sup>	●
Forward Collision Alert	–	–	○ <sup>5</sup>
Lane Departure Warning	–	–	○ <sup>5</sup>

	LS	LT	PREMIER
<b>INTERIOR</b>			
Mirror: Rearview, manual day/night	●	●	–
Auto dimming	–	–	●
Rear vision camera	●	●	●
Remote Keyless Entry with panic alarm	●	●	–
Remote vehicle starter system	–	●	●
Steering column: Tilt and telescopic	●	●	●
Steering wheel: 3-spoke with mounted audio and phone interface controls	●	–	–
3-spoke with mounted cruise, audio and phone interface controls	–	●	–
3-spoke leather-wrapped with mounted cruise, audio and phone interface controls	–	○ <sup>1</sup>	●
Sunroof: Power, tilt/sliding	–	○ <sup>5</sup>	○
<b>AUDIO SYSTEMS</b>			
Chevrolet MyLink Radio <sup>7</sup> with 7-inch diagonal color touch-screen display, AM/FM stereo with seek-scan and digital clock, includes Bluetooth audio streaming <sup>8</sup> for music and select phones; featuring Android Auto and Apple CarPlay compatibility <sup>9</sup>	●	●	●
Bluetooth audio streaming <sup>8</sup> for select phones	●	●	●
Two USB ports <sup>10</sup> and auxiliary input jack	●	●	●
SiriusXM Satellite Radio <sup>11</sup> All Access Package with 3-month trial subscription	–	●	●
6-speaker sound system	●	●	–
7-speaker Bose premium audio system, including subwoofer	–	○ <sup>6</sup>	●
OnStar Basic Plan <sup>12</sup> for five years includes select features of the myChevrolet Mobile App <sup>13</sup> including remote start (if properly equipped), door lock or unlock, honk your horn and flash your lights. Limited OnStar services include Advanced Diagnostics and Dealer Maintenance Notification	●	●	●
OnStar 4G LTE and built-in Wi-Fi hotspot for up to seven devices; <sup>14</sup> includes data trial for 3 months or 3 GB (whichever comes first)	●	●	●

	LS	LT	PREMIER
<b>SEATING</b>			
Driver seat: 4-way manual	●	●	–
6-way power	–	○ <sup>1</sup>	●
Power lumbar control	●	●	●
Seats: Cloth	●	–	–
Deluxe Cloth	–	●	–
Deluxe Cloth/Leatherette	–	○ <sup>1</sup>	–
Leatherette	–	–	●
Heated seats: Driver and front passenger	–	–	●
Rear 60/40 split-folding bench seat	●	●	●
<b>WHEELS</b>			
16" steel with painted wheel cover	●	–	–
16" aluminum	○ <sup>15</sup>	●	–
18" aluminum	–	–	●
<b>PACKAGES</b>			
Driver Confidence Package: Side Blind Zone Alert, Rear Cross Traffic Alert and Rear Park Assist	–	○	●
Driver Confidence II Package: Forward Collision Alert and Lane Departure Warning	–	–	○
LT Convenience Package: Keyless Open and Start, 6-way power driver-seat adjuster, leather-wrapped 3-spoke steering wheel, Deluxe Cloth/Leatherette seat trim and body-color door handles with chrome accent	–	○	–
Sun and Sound Package: 7-speaker Bose premium audio system and power sunroof	–	○	–

<sup>1</sup> Requires available LT Convenience Package. <sup>2</sup> A NOTE ON CHILD SAFETY: Always use safety belts and the correct child restraint for your child's age and size, even with air bags. Even in vehicles equipped with the Passenger Sensing System, children are safer when properly secured in a rear seat in the appropriate infant, child or booster seat. Never place a rear-facing infant restraint in the front seat of any vehicle equipped with an active frontal air bag. See the Owner's Manual and the child safety seat instructions for more safety information. <sup>3</sup> Visit [onstar.com](http://onstar.com) for coverage map, details and system limitations. OnStar acts as a link to existing emergency service providers. <sup>4</sup> Requires available Driver Confidence Package. <sup>5</sup> Requires available Driver Confidence II Package. <sup>6</sup> Requires available Sun and Sound Package. <sup>7</sup> MyLink functionality varies by model. Full functionality requires compatible Bluetooth and smartphone, and USB connectivity for some devices. <sup>8</sup> Visit [my.chevrolet.com/learn](http://my.chevrolet.com/learn) for vehicle and smartphone compatibility. <sup>9</sup> Vehicle user interfaces are products of Apple and Google and their terms and privacy statements apply. Requires compatible smartphone and data plan rates apply. <sup>10</sup> Not compatible with all devices. <sup>11</sup> If you decide to continue service after your trial, the subscription plan you choose will automatically renew thereafter and you will be charged according to your chosen payment method at then-current rates. Fees and taxes apply. To cancel you must call SiriusXM at 1-866-635-2349. See SiriusXM Customer Agreement for complete terms at [siriusxm.com](http://siriusxm.com). All fees and programming subject to change. <sup>12</sup> Does not include emergency or security services. Visit [onstar.com](http://onstar.com) for coverage map, details and system limitations. <sup>13</sup> Requires data plan, compatible vehicle and compatible device. Some features require factory-installed remote start, power locks, Tire Pressure Monitoring System or active OnStar service. <sup>14</sup> Requires a compatible mobile device, active OnStar service and data plan. 4G LTE service available in select markets. Visit [onstar.com](http://onstar.com) for coverage map, details and system limitations. Data plans provided by AT&T. <sup>15</sup> Standard on LS AWD.





CHEVROLET

## COMPLETE CARE

Experience Chevrolet Complete Care, a comprehensive coverage, warranty and protection program that comes standard with every new 2017 Chevrolet Trax lease and purchase. Simply, it is designed around you, to make it easy to keep your Chevrolet like new – and give you the confidence you deserve when you need it most.

### YOUR COMPREHENSIVE OWNER BENEFIT PROGRAM.

Includes two maintenance visits (oil and filter changes, tire rotations and multipoint vehicle inspections)<sup>1</sup>

5 years/60,000 miles of Roadside Assistance and Courtesy Transportation<sup>2</sup>

5-year/60,000-mile Powertrain Limited Warranty<sup>2</sup>

3-year/36,000-mile Bumper-to-Bumper Warranty<sup>2</sup>

6 years/100,000 miles of Rust-Through Protection<sup>2</sup>

5 years of OnStar Basic Plan<sup>3</sup> including select features of the myChevrolet Mobile App<sup>4</sup>

3 months of OnStar Guidance Plan<sup>5</sup>

## DIMENSIONS

Width	69.9"
Front Track	60.6"
Rear Track	60.6"

Length	167.2"
Wheelbase	100.6"
Height	65.2" (without roof rails) 65.9" (with roof rails)

## MAXIMUM CAPACITIES

EPA-ESTIMATED FUEL ECONOMY	
1.4L (Turbo) FWD	25 MPG city/33 highway/28 combined
1.4L (Turbo) AWD	24 MPG city/30 highway/27 combined

FUEL TANK (APPROXIMATE)	14 gallons
PASSENGER VOLUME	92.8 cubic feet (91.6 cubic feet with sunroof)/seats 5
CARGO VOLUME <sup>6</sup>	18.7 cubic feet (rear seat up) 48.4 cubic feet (rear seat folded)

## OWNERSHIP EXTRAS

CHEVROLET



CHEVROLET.COM/WARRANTY

CHEVROLET



CHEVROLET.COM/ACCESSORIES



ONSTAR.COM

SIRIUSXM

SIRIUSXM.COM

## NEW VEHICLE LIMITED WARRANTY

**5-YEAR/60,000-MILE TRANSFERABLE POWERTRAIN LIMITED WARRANTY** Every 2017 Chevrolet Trax comes with a 5-year/60,000-mile (whichever comes first) transferable Powertrain Limited Warranty. 24/7 Roadside Assistance and Courtesy Transportation are also offered for the duration of the Powertrain Limited Warranty. Please see your Chevrolet dealer for details.

**3-YEAR/36,000-MILE BUMPER-TO-BUMPER LIMITED WARRANTY** Chevrolet will warrant each 2017 Trax from bumper to bumper for 3 years/36,000 miles (whichever comes first; see dealer for details), with no deductible, from the original in-service date of the vehicle, for warrantable repairs that are required as a result of defects due to materials and/or workmanship. Cosmetic corrosion resulting from defects is also covered under the Bumper-to-Bumper Limited Warranty. In addition, rust-through corrosion will be covered for 6 years/100,000 miles (whichever comes first). See dealer for details.

<sup>1</sup> Maintenance visits must occur within two years or 24,000 miles of vehicle delivery, whichever comes first. Does not include air filters. See participating dealer for other restrictions and complete details. <sup>2</sup> Whichever comes first. See dealer for details. <sup>3</sup> Does not include emergency or security services. Visit onstar.com for coverage map, details and system limitations. <sup>4</sup> Requires data plan, compatible vehicle and compatible device. Some features require factory-installed remote start, power locks, Tire Pressure Monitoring System or active OnStar service. <sup>5</sup> Visit onstar.com for coverage map, details and system limitations. <sup>6</sup> Cargo and load capacity limited by weight and distribution.



## IMPORTANT INFORMATION

**CHEVROLET OWNER CENTER (MY.CHEVROLET.COM)** Everything you need to know. Anything you need to do. Your Chevrolet Owner Center makes it easy. Create your account today to get the most out of your new vehicle. Get special alerts and offers, schedule service, review your maintenance schedule, and view how-to videos specifically for your vehicle. All online, anytime. Visit the Owner Center today to register or take a tour.

**ENGINES** Chevrolet products are equipped with engines produced by GM Powertrain or other suppliers to GM worldwide. The engines in Chevrolet products may also be used in other GM makes and models.

**ASSEMBLY** Chevrolet vehicles and their components are assembled or produced by different operating units of General Motors, its subsidiaries or suppliers to GM worldwide. We sometimes find it necessary to produce Chevrolet vehicles with different or differently sourced components than originally scheduled. Since some options may be unavailable when your vehicle is assembled, we suggest you verify that your vehicle includes the equipment you ordered and that, if there were changes, they are acceptable to you.

**ONSTAR** OnStar services require vehicle electrical system (including battery), wireless service and GPS satellite signals to be available and operating for features to function properly. OnStar acts as a link to existing emergency service providers. Subscription Service Agreement required. Call 1.888.4ONSTAR (1-888-466-7827) or visit onstar.com for OnStar Terms and Conditions, Privacy Policy, details and system limitations.

**A NOTE ON CHILD SAFETY** Always use safety belts and the correct child restraint for your child's age and size, even with air bags. Even in vehicles equipped with the Passenger Sensing System, children are safer when properly secured in a rear seat in the appropriate infant, child or booster seat. Never place a rear-facing infant restraint in the front seat of any vehicle equipped with an active frontal air bag. See the Owner's Manual and the child safety seat instructions for more safety information.

**IMPORTANT WORDS ABOUT THIS CATALOG** We have tried to make this catalog comprehensive and factual. We reserve the right, however, to make changes at any time, without notice, in prices, colors, materials, equipment, specifications, models and availability. Specifications, dimensions, measurements, ratings and other numbers in this catalog

and other printed materials provided at the dealership or affixed to vehicles are approximations based on design and engineering drawings, prototypes and laboratory tests. Your vehicle may differ due to variations in manufacture and equipment. Since some information may have been updated since the time of printing, please check with your Chevrolet dealer for complete details. Chevrolet reserves the right to lengthen or shorten the model year for any product for any reason or to start and end model years at different times. Certain vehicle features may lose their usefulness over time due to obsolescence from technological changes. Unless otherwise noted, all claims based on GM Crossover segment and latest available competitive information. Excludes other GM vehicles.

**FLEET ORDERS** Some standard content may be deleted on fleet orders. See dealer for details.

**CHEVROLET OWNERSHIP EXPERIENCE** Chevrolet is committed to enhancing the vehicle shopping and ownership experience through a wide array of programs. Visit chevrolet.com to build and price, find a vehicle, request a quote, compare vehicles, find financial tools or track your vehicle order. You'll also find information about 24-hour Roadside Assistance, Courtesy Transportation, Customer Assistance, GM Mobility, safety and current incentives.

**CHEVROLET.COM/SAFETY** Chevrolet is committed to keeping you and your family safe – from the start of your journey to your destination. That's why every Chevrolet is designed with a comprehensive list of safety and security features to help give you peace of mind.

**GMMOBILITY.COM (1-800-323-9935)** GM Mobility<sup>SM</sup> offers financial assistance for eligible adaptive equipment to make automotive travel easier for persons with disabilities or special transportation needs. To learn more about special GM Mobility offers, visit gmmobility.com.

**THE BUYPOWER CARD** The Chevrolet BuyPower Card – Every purchase you make with the BuyPower Card from Capital One\* helps you earn toward an eligible new Chevrolet, Buick, GMC or Cadillac vehicle. There's no limit on the amount you can earn or redeem, and your Earnings don't expire. Visit chevroletbuypowercard.com/catalogs.

\* Capital One, N.A. is the issuer of the BuyPower Card. General Motors ("GM") is responsible for the operation and administration of the Earnings program.



TWITTER.COM/CHEVROLET



YOUTUBE.COM/CHEVROLET



FACEBOOK.COM/CHEVROLET

GM, the GM logo, Chevrolet, the Chevrolet logo, and the slogans, emblems, vehicle model names, vehicle body designs and other marks appearing in this catalog are the trademarks and/or service marks of General Motors, its subsidiaries, affiliates or licensors. ©2016 OnStar. All rights reserved. Sirius, XM, SiriusXM and all related marks and logos are trademarks of Sirius XM Radio Inc. The Bluetooth word mark is a registered trademark owned by Bluetooth SIG, Inc., and any use of such mark by Chevrolet is under license. Bose is a registered trademark of the Bose Corp. Apple CarPlay is a trademark of Apple Inc. iPhone is a trademark of Apple Inc., registered in the U.S. and other countries. The Android name, the Android logo, and other trademarks are property of Google Inc. Google is a trademark of Google Inc.

©2016 General Motors. All rights reserved. October 2016





**FIND NEW ROADS™**

**CHEVROLET.COM**