

# CROWN VIC



2000 CROWN VICTORIA





You're beyond having to make a statement. Those days are part of a road that continues to unwind. Only now you are further along. You can do without all the bravado. Your car doesn't have to raise its voice in a crowd. Or put your savings at risk. It can go about with grace. It can conduct itself with assuredness, precision, even power. Crown Victoria. Finally, a car with nothing to prove.

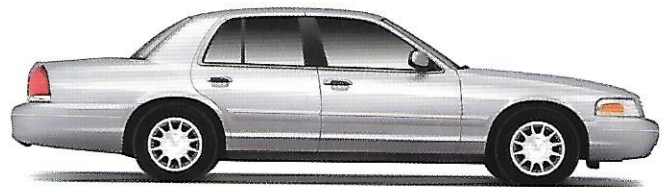
## CROWN VICTORIA **Standard Equipment**

- Advanced 4.6-liter V8
- Air conditioning
- Power Lock Group
- Power windows
- Rear window defroster
- Speed control
- AM/FM stereo/cassette
- Power driver's seat\*
- Anti-lock braking system
- Remote Keyless Entry System with Smart-Lock\*

\*LX only.



CROWN VICTORIA



CROWN VICTORIA **LX**  
(shown with optional Comfort Group)



Crown Victoria is the only car in its class to receive the government's five-star front crash test rating.\*

\*Class is large car under \$32,000.

Since 1970, Crown Victoria has logged its share of miles on America's highways. At the heart is an advanced 4.6-liter V8 that balances power with fuel efficiency.\* The suspension system, including an innovative Watt's linkage rear setup, combines a traditional large-car smooth ride with agile handling characteristics.

\*EPA mileage estimates unavailable at press time. See your Ford Dealer for latest information.

A smooth ride that's relaxing and rewarding. Comfortable seating for six. Responsive V8 power and rear-wheel-drive performance. These are the full-size advantages of Crown Victoria.

**100K**

**100,000 mile tuneup**

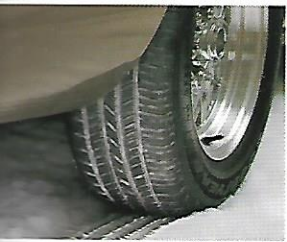
100,000 miles. Crown Victoria lets you go a long way between tune-up intervals.\*

\*Under normal driving conditions with routine fluid/filter changes.

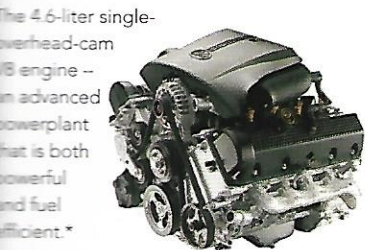




The Watt's linkage rear suspension is designed to improve directional stability and steering precision while maintaining traditional ride smoothness.



The available Electronic Traction Control System, working with the standard ABS, detects slippage and automatically improves traction at all speeds.



The 4.6-liter single-overhead-cam V8 engine -- an advanced powerplant that is both powerful and fuel efficient.\*

EPA mileage estimates unavailable at press time. See your Ford Dealer for latest information.

Exterior Features	Crown Victoria	LX
Rear window defroster	●	●
Aero headlamps with long-life "crystalline" krypton bulbs	●	●
Solar tinted glass	●	●
Clearcoat paint with anti-chip primer	●	●

Interior Features	Crown Victoria	LX
Air conditioning	●	●
Power Lock Group	●	●
Power windows	●	●
Speed control	●	●
Dual sun visors	●	●
Light/Decor Group	-	●

Safety and Security	Crown Victoria	LX
Remote Keyless Entry System	●	●
Anti-lock braking system	●	●
SecuriLock™ Passive Anti-Theft System	●	●
Child safety latches on rear doors	●	●
Power remote-control mirrors	●	●

**Option Groups**

LX Comfort Group:	Crown Victoria	LX
Air conditioning; elect. temp. control; 12-spoke aluminum wheels; power passenger seat with lumbar support; electronic auto-dim mirror with compass; leather-wrapped steering wheel	-	●

LX Comfort Plus Group (includes features of LX Comfort Group):	Crown Victoria	LX
Electronic instrumentation; leather seating surfaces; Premium electronic AM/FM stereo/cassette	-	●

Powertrain	Crown Victoria	LX
4.6L SEFI electronically controlled auto O/D	●	●
California emissions system	●	●

Tires/Wheels	Crown Victoria	LX
P225/60SRx16 BSW tires	●	●
P225/60SRx16 WSW tires	●	●
Deluxe wheel covers	●	-
Chrome cross-spoke locking wheel cover	-	●

Seats	Crown Victoria	LX
Cloth split bench	●	-
Cloth split bench, luxury	-	●
Leather seating surfaces split bench (requires LX Comfort Group)	-	●
Power driver's seat (incl. driver power recliner and power lumbar on LX only)	●	●

Audio	Crown Victoria	LX
Electronic AM/FM stereo/cassette	●	●
Electronic AM/FM stereo with single CD player	●	●
Premium electronic AM/FM stereo/cassette (req. LX Comfort Group)	-	●
6-disc CD changer, trunk mounted (req. electronic AM/FM stereo and LX Comfort Group)	-	●

Other Options	Crown Victoria	LX
All-speed electronic traction control	●	●
Floor mats, front and rear	●	●
Handling and Performance Package includes updated suspension system with rear air springs and stabilizer bar, 16" cast aluminum wheels, dual exhaust, 215 horsepower and 3.55 axle ratio	●	●
License plate bracket	●	●
Universal garage door opener (can be programmed for 3 different transmitters)	-	●

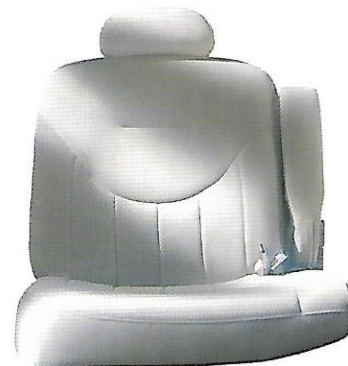
standard ● optional ●

**Product Changes and Options Availability**


Following publication of the catalog, certain changes in standard equipment, options, prices and the like, or product delays, may have occurred which would not be included in these pages. Your Ford Dealer is your best source for up-to-date information. Ford Division reserves the right to change product specifications at any time without incurring obligations. Options shown or described are available at extra cost and may be offered only in combination with other options or subject to additional ordering requirements or limitations.



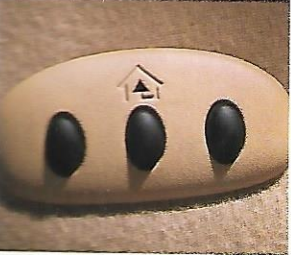
**Medium Parchment**  
Leather Trim



**Light Graphite**  
Cloth



The Remote Keyless Entry System with Smart-Lock, standard with LX, is optional with the standard Crown Victoria. Its remote transmitter lets you lock and unlock your car from a distance for extra peace of mind.



The Homelink® universal garage door opener, available with LX, can be easily programmed to control an estate gate and a home security system, replacing up to three remotes.



Traditional body-on-frame construction has front frame rails of high-strength steel featuring crash energy management design (frame shown in red).





Crown Victoria has plenty of room. Enough for six adults, along with a variety of comfort and convenience features designed to make any trip a pleasure. Power assists are numerous, as are driving enhancements like speed control and a tilt steering wheel. Power door locks and windows are standard. Note the "express-down" feature which allows the driver's window to be lowered completely with just one touch.

C

R

O







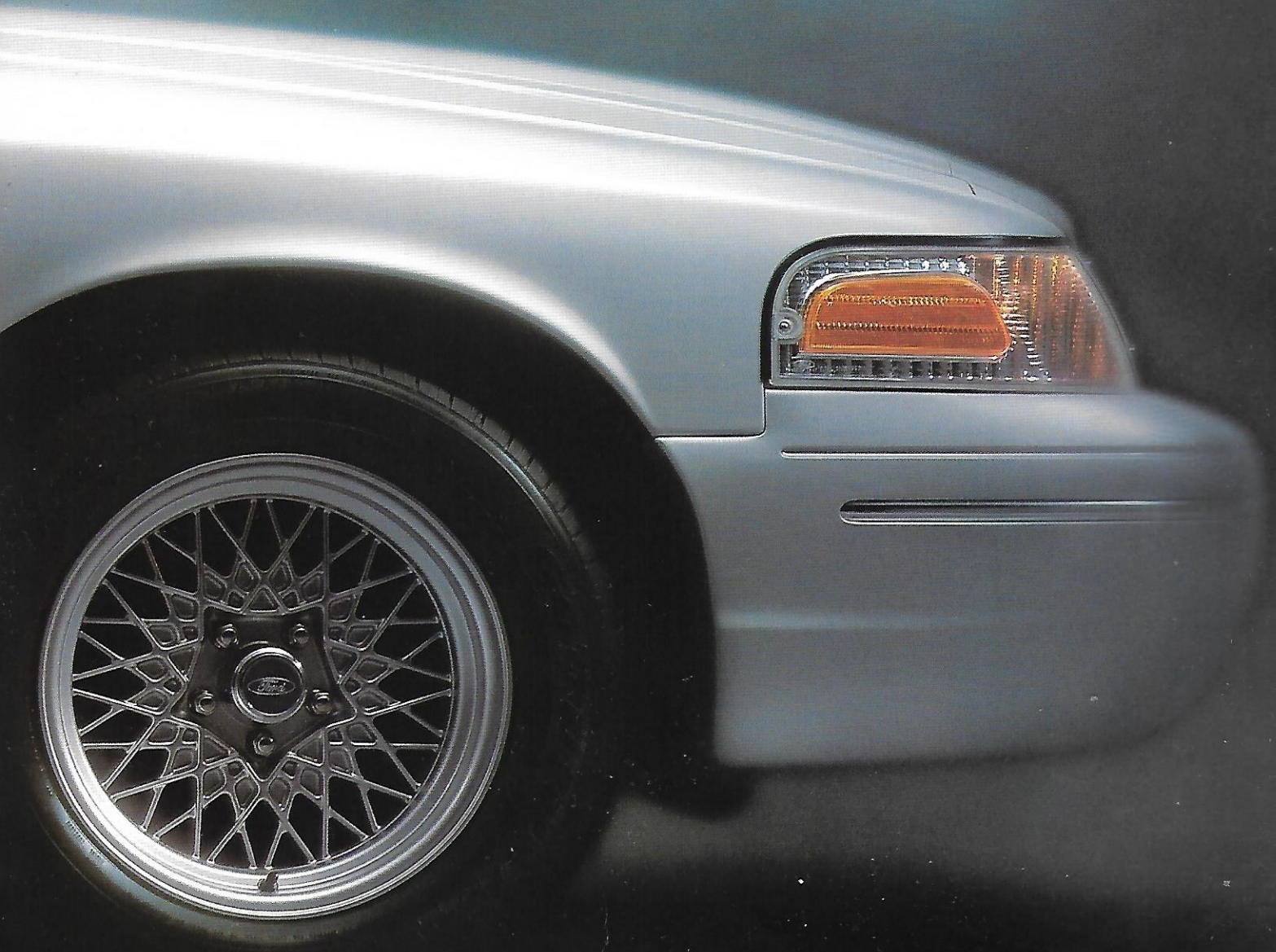
I

C

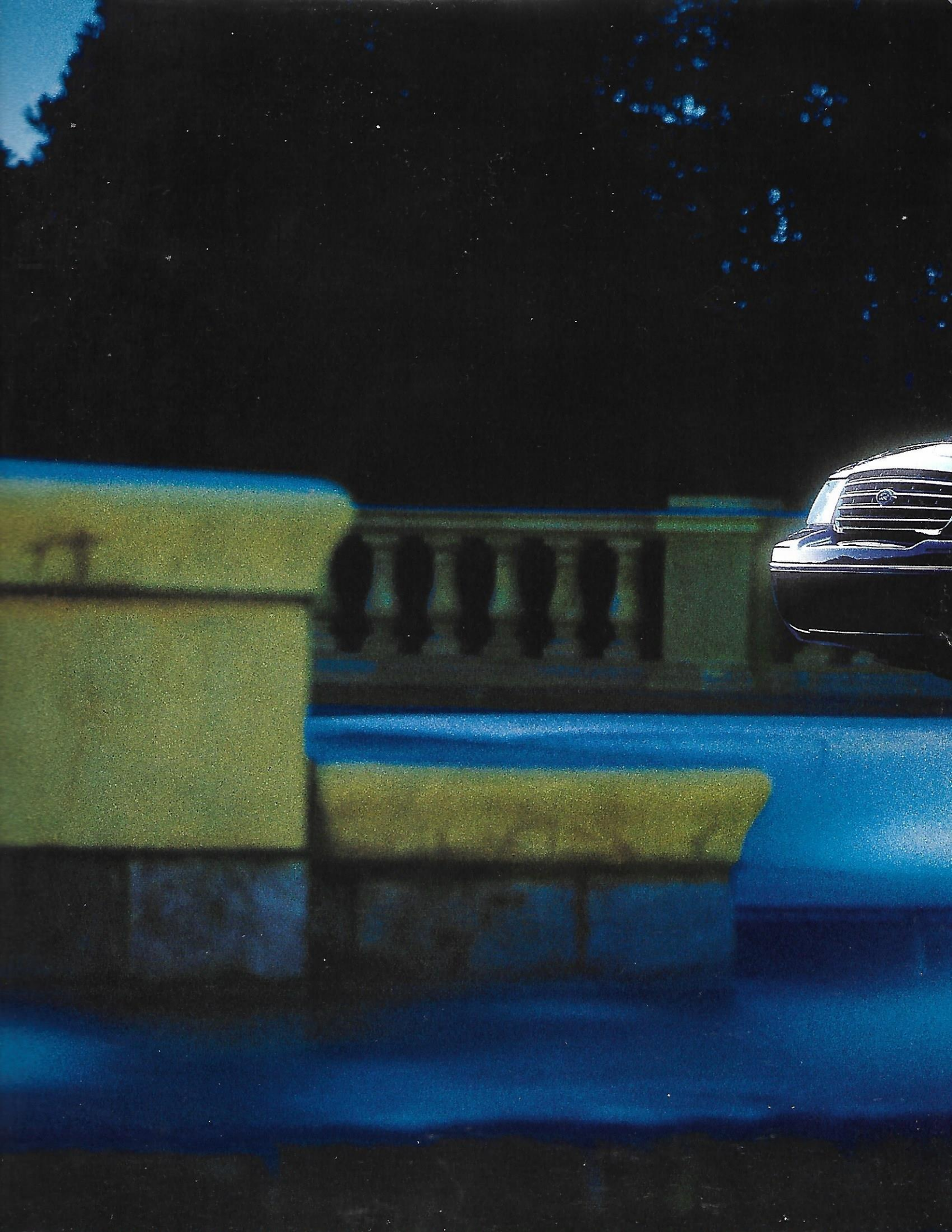
T



D R I A











**Vibrant White**  
Clearcoat



**Silver Frost**  
Clearcoat Metallic



**Medium Grey**  
Clearcoat Metallic



**Harvest Gold**  
Clearcoat Metallic



**Toreador Red**  
Clearcoat Metallic



**Light Blue**  
Clearcoat Metallic



**Tropic Green**  
Clearcoat Metallic



**Spruce Green**  
Clearcoat Metallic



**Deep Wedgewood Blue**  
Clearcoat Metallic



**Black**  
Clearcoat



**Exterior Paint Colors**

- Vibrant White** Clearcoat
- Silver Frost** Clearcoat Metallic
- Medium Grey** Clearcoat Metallic
- Harvest Gold** Clearcoat Metallic
- Toreador Red** Clearcoat Metallic
- Light Blue** Clearcoat Metallic
- Tropic Green** Clearcoat Metallic
- Spruce Green** Clearcoat Metallic
- Deep Wedgewood Blue** Clearcoat Metallic
- Black** Clearcoat

**Interior Trim**

	Dark Denim Blue	Light Graphite	Medium Parchment	Dark Charcoal	Oxford White/Lt. Graphite
Vibrant White Clearcoat	●	●	●	●	●
Silver Frost Clearcoat Metallic	●	●		●	●
Medium Grey Clearcoat Metallic	●	●		●	●
Harvest Gold Clearcoat Metallic			●		
Toreador Red Clearcoat Metallic		●	●	●	●
Light Blue Clearcoat Metallic	●	●			●
Tropic Green Clearcoat Metallic		●	●	●	●
Spruce Green Clearcoat Metallic		●	●	●	
Deep Wedgewood Blue Clearcoat Metallic	●	●		●	●
Black Clearcoat		●	●	●	●



Deluxe wheel covers  
(standard on Crown Victoria)



Chrome cross-spoke locking wheel covers  
(standard on LX)



12-spoke aluminum wheels  
(included in LX Comfort Group and Comfort Plus Group)



16" cast aluminum wheels  
(included in Handling and Performance Package)

**Roadside Assistance**

Every new Ford includes the assurance of a 24-hour emergency Roadside Assistance Program provided during the 3-year/36,000-mile limited warranty period. Ask your Ford Dealer for complete details on this program which includes such services as fuel delivery, tire change, jump start, or even help when you're locked out of your vehicle.

**New Vehicle Limited Warranty**

Under the New Vehicle Limited Warranty, you receive bumper-to-bumper coverage for 3 years/36,000 miles with no deductible. You also receive corrosion perforation protection coverage for five years with unlimited mileage and no deductible. Ask your Ford Dealer for a copy of the warranty.

**Quality Care**

The people who know your vehicle best. The parts designed for it. A service department that understands your needs and respects your time. That's what Quality Care is all about.



Bettering the communities in which we do business is the goal of the Ford Force. We're organized, mobilized and coming to a community near you. Join us.



Visit our website at [www.fordvehicles.com](http://www.fordvehicles.com)