



'05 **mazda** TRIBUTE

ZOOM-ZOOM



ALWAYS THE
SOUL
OF A SPORTS CAR.™

ZOOM-ZOOM



MAZDA FOR 2005.
ONE SOUL.
ONE FEELING.
ONE QUESTION.
HOW DO YOU WANT YOUR ZOOM-ZOOM?



DEEP INSIDE US ALL, THERE'S A UNIQUELY HUMAN EMOTION JUST WAITING FOR AN INVITATION TO "COME OUT AND PLAY." IT'S A FEELING OF PURE EXUBERANCE AND EXHILARATION—THE EMOTION OF MOTION.

REDISCOVER THE EMOTION OF MOTION.

It starts with a feeling. One that children instinctively know, and grown-ups want to recapture. It calls to mind words like exhilaration, liberation and joy. But we like the way children put it better: "Zoom-Zoom." It's what moves us to build the kind of vehicles we do. And why you'll find the soul of a sports car engineered into everything we make—including the remarkable Mazda Tribute, the SUV with the soul of a sports car.™



A. KEEN SENSE OF DIRECTION. For confidence-inspiring control and handling, Mazda Tribute is endowed with a speed-sensing rack-and-pinion steering system, 4-wheel independent suspension, plus an Anti-lock Brake System (ABS). **B. FOUR TIMES TWO.** An electronic 4-wheel drive (4WD) system, featuring Active Torque Control Coupling (ATCC) technology, is available on both Tribute *i* and *s* models for improved traction and control.

FORGOTTEN WHAT THE "S" IN SUV STANDS FOR? THEN SLIP BEHIND THE WHEEL OF A MAZDA TRIBUTE AND WATCH HOW QUICKLY ITS AGILE HANDLING PUTS THE "SPORT" BACK IN SPORT UTILITY VEHICLE.

IT'S GOT MOVES

ORDINARY SUVs CAN ONLY DREAM ABOUT.

Whether you're slicing through rush-hour traffic, striding down a steep mountain road or slipping into a tight parking space, the Mazda Tribute is a joy to drive. Because unlike its often oversized, underpowered and awkward-handling competition, Mazda Tribute is a responsive performer with crisp, agile handling. And with available features like a 200-hp V6, 4-speed automatic transmission, and electronic 4-wheel drive (4WD), you'll discover it's as capable as it is nimble.





A.

A. TWIN POWER SOURCES. A potent 200-hp, 3.0-liter 24-valve V6, coupled with an electronically controlled 4-speed automatic transmission, is standard on the Tribute *s*. A responsive yet fuel-efficient 153-hp, 2.3-liter 16-valve 4-cylinder, mated to a 5-speed manual gearbox is standard in the Tribute *i*.

TRIBUTE'S 4WD SYSTEM USES ADVANCED ACTIVE TORQUE CONTROL COUPLING (ATCC) TECHNOLOGY WITH ELECTRONIC SENSORS TO AUTOMATICALLY ADJUST TO CHANGING CONDITIONS. SO EVEN IF THE ROAD OR GOOD WEATHER ENDS, THE FUN WON'T.



DOUBLE YOUR CHANCES OF
PULLING OFF
A GREAT WEEKEND.

Amazing agility on asphalt and a sporty exterior aren't all the Mazda Tribute has to offer. Add an inspiring option or two and you've got an all-weather, can-do performer that plays as hard as it works. For enhanced traction, stability and safety, choose the available electronic 4-wheel drive (4WD) system that automatically directs just the right amount of torque to wherever it's needed. Or tow up to 3,500 pounds with your V6-powered Mazda Tribute *s*, simply by adding the available Tow Package—which includes a frame-mounted Class II hitch. Raising the bar, cargo-wise, a versatile roof rack* with adjustable crossbars is standard, while a handy cargo basket (with stretch net) is available.

*The amount and placement of cargo can significantly affect vehicle handling. Roof-rack payload limited to 100 pounds. See owner's manual for more information.

Tribute *s* shown with available Tow Package



**SOME PLAYGROUNDS ARE
BETTER EQUIPPED
THAN OTHERS.**

Quality materials and thoughtful details grace the Tribute's entire cabin. From richly embossed, leather-trimmed seats and heated front seats, available on the Tribute S, to standard features like the sporty floor console, silver-trimmed gauges and dual 12-volt outlets, all of your senses will register their approval.



INSIDE IS EVERYTHING YOU NEED TO PLAY OUTSIDE.

The Mazda Tribute's driver-centric cockpit doesn't just invite your input. It rewards it. With large gauges and intelligently placed controls that minimize driver distraction. A sporty center console that puts the shifter, storage compartments and cup holders within easy reach. Plus a host of standard features committed to your comfort and convenience. Including a tilt steering wheel and air conditioning. Power windows, outside mirrors and door locks. Even a 100-watt AM/FM/CD stereo. For more fun down the road, consider the available in-dash 6-disc CD changer, SIRIUS Satellite Radio* accessory kit or Rear-Seat Entertainment System with DVD player.

A. COMFORT & CONVENIENCE. All three Tribute's option packages provide an overhead storage console for sunglasses, a 6-way power driver's seat, in-dash 6-disc CD changer and more. **B. TRUSTY SIDEKICK.** The standard multifunction floor console serves up storage for up to 17 CD cases, a built-in coin holder, plus dual cup holders in front, and a pair of retractable cup holders in back.



*SIRIUS Satellite Radio reception requires a subscription and Mazda satellite radio receiver accessory kit. Available only in the U.S., except Alaska and Hawaii.



WITH A MAZDA TRIBUTE, YOU'RE WELL-EQUIPPED FOR LIFE'S LITTLE TRIPS, BIG ADVENTURES, AND OPEN ROADS. BEST OF ALL, YOU'RE ALSO FREE FROM THE UNINSPIRED PERFORMANCE OF AN ORDINARY SUV.

A. OPEN MINDED. The Tribute's rear window and liftgate open separately, allowing you to transport bulky items and even 4 x 8 sheets of plywood. **B. DOUBLE DUTY.** The standard 60/40 split fold-down rear seatback lets passengers share the ride with extra-long cargo.

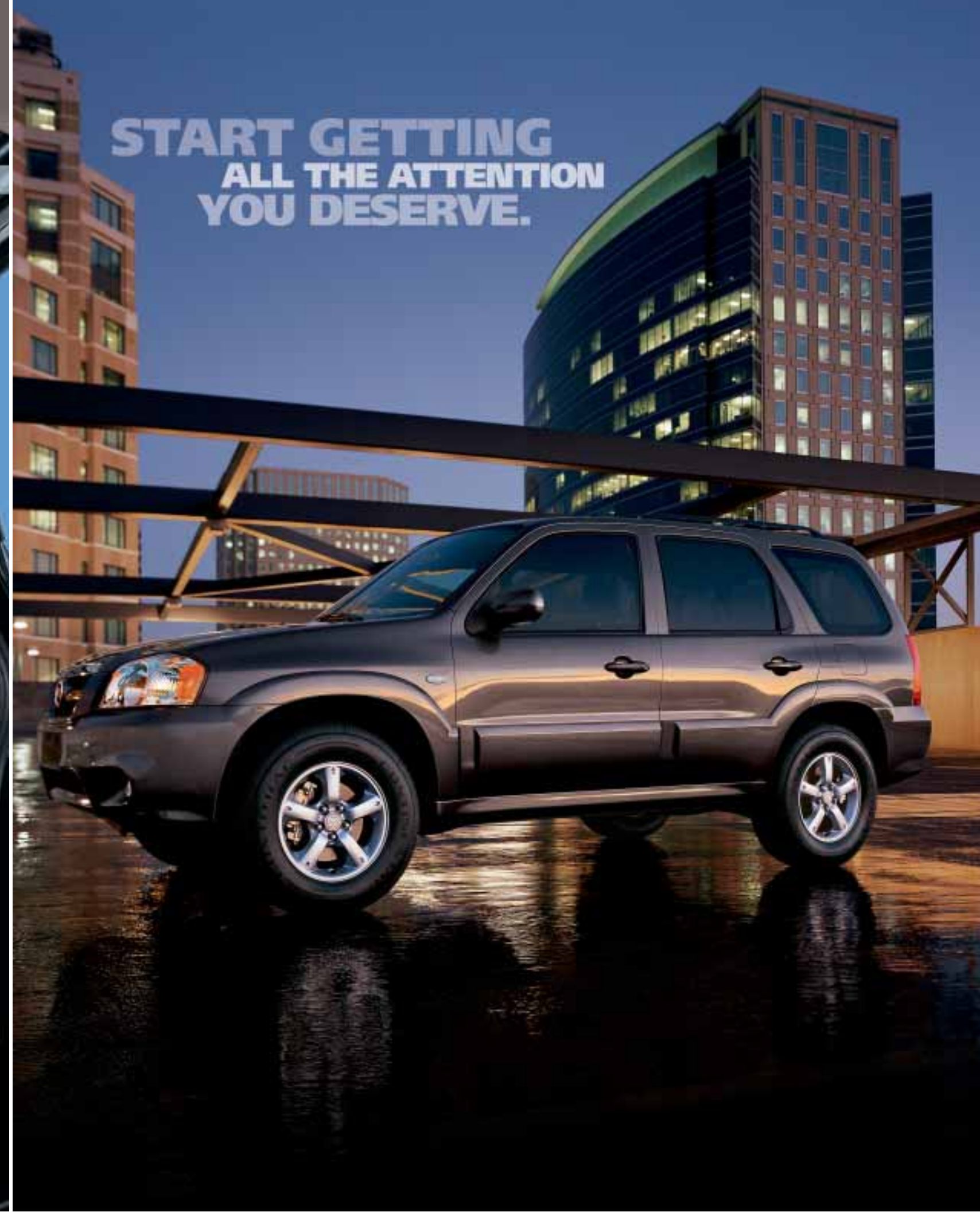


THERE'S A LOT HERE THAT'S WORTH LOOKING INTO.

Whether you're headed across town, or across the country, the Mazda Tribute's 66.8 cubic feet of cargo space* will expand your capacity to enjoy the trip. Simply fold the Tribute's rear seatbacks forward and you've quickly created a totally flat load floor. One that's eager to swallow everything, from your packages and luggage to sports and outdoor gear. And thanks to Tribute's high rear liftgate clearance and low cargo-area threshold, loading and unloading cargo is a safe and simple task.

C. NO PRYING EYES. A retractable cargo cover is available to protect your valuable cargo from prying eyes. When unneeded, it rolls up like a windowshade. **D. SAFETY POINTS.** Three-point safety belts and adjustable headrests for all 5 seating positions are standard—as are advanced 2-stage front air bags† with belt-use, passenger-weight and driver's seat-position sensors. Side-impact air curtains (with coverage for front and rear seats) and front seat side-impact air bags† are available on the Tribute s.

*Cargo and load capacity limited by weight and distribution. Please remember to properly secure all cargo.
†Always wear your safety belt and secure children in the rear seat.



START GETTING
ALL THE ATTENTION
YOU DESERVE.

MECHANICAL FEATURES

	Tribute <i>i</i>	Tribute s
2.3L DOHC 16-valve 4-cylinder engine with 153 hp	S	—
3.0L DOHC 24-valve V6 engine with 200 hp	—	S
5-speed manual overdrive transmission	S	—
4-speed automatic overdrive transmission	O	S
Front-wheel drive	S	S
Independent MacPherson strut front suspension with stabilizer bar	S	S
Multilink rear suspension with dual lateral links and trailing arms	S	S
Power-assisted rack-and-pinion steering with engine-speed-sensing variable assist	S	S
Power-assisted front disc/rear drum brakes	S	—
Power-assisted 4-wheel disc brakes	—	S
Anti-lock Brake System (ABS) with Electronic Brakeforce Distribution (EBD)	S	S

EXTERIOR FEATURES

	Tribute <i>i</i>	Tribute s
16-inch 5-spoke alloy wheels, P235/70R16 all-season tires	S	S
Molded-color bumpers, wheel-arch moldings and lower body trim	S	—
Painted bumpers, wheel-arch moldings and lower body trim	P	S
Dual black power remote mirrors	S	—
Dual body-color power remote mirrors	P	S
2-speed variable-intermittent wipers	S	S
Intermittent rear wiper/washer	S	S
Flip-up liftgate window	S	S
Privacy-tint glass on rear windows and liftgate	S	S
Clear-lens halogen headlights with automatic delayed shutoff	S	S
Clear-lens halogen fog lights	P	S
Front fender-mounted turn-signal repeater lights	S	S
Roof rack with adjustable crossbars	S	S

INTERIOR FEATURES

	Tribute <i>i</i>	Tribute s
Advanced 2-stage front air bags* with belt-use, passenger-weight and driver's seat-position sensors	S	S
3-point safety belts for all seating positions	S	S
Reclining front bucket seats	S	S
Adjustable driver's seat lumbar support	—	S
Adjustable headrests for all seating positions	S	S
60/40 split fold-down rear seat with reinforced seatback	S	S
Cloth upholstery and carpet floor mats	S	S
Power windows with illuminated switches and driver's 1-touch-down feature	S	S
Power door locks with 2-stage unlocking	S	S
Remote keyless illuminated entry system	S	S
Engine-immobilizer anti theft system	S	S
Dual front 12-volt power outlets	S	S
10-minute key-off power reserve for windows and moonroof	S	S
Tilt steering wheel	S	S
Cruise control with steering-wheel-mounted controls	P	S
Front and rear cup holders	S	S
Floor-mounted shifter, center console with covered storage and armrest lid	S	S
Dual vanity mirrors with covers; overhead map lights	S	—
Dual illuminated vanity mirrors with covers; overhead map lights	P	S
Heater/defroster with rear-seat heater ducts	S	S
CFC-free air conditioning; rear window defogger with timer	S	S
100-watt AM/FM/CD stereo with 4 speakers and digital clock	S	S

S : Standard O : Optional P : Package A : Dealer-available accessory — : Not available
 *Always wear your safety belt and secure children in the rear seat.

MazdaUSA.com
 Wherever you see this symbol, you can get the whole story on our interactive Web site.

OPTIONS AND OPTION PACKAGES

	Tribute <i>i</i>	Tribute s
TOW PACKAGE: Frame-mounted Class II hitch receiver with 3500-lb capacity; trailer wiring harness	—	O
PREMIUM PACKAGE: 6-way power driver's seat; leather-trimmed seats and steering-wheel rim; black-maple-look center instrument panel trim; cruise control with steering-wheel-mounted controls; overhead storage console; dual illuminated visor vanity mirrors; fog lights; dual body-color power remote mirrors; painted bumpers, wheel-arch moldings and lower body trim	O	—
PACKAGE 1: 6-way power driver's seat; 190-watt AM/FM stereo with in-dash 6-disc CD changer and 7 speakers (including subwoofer and 2 tweeters); power sliding-glass moonroof with sunscreen; overhead storage console; retractable cargo cover	—	O
PACKAGE 2: Leather-trimmed seats and steering-wheel rim; 6-way power driver's seat; black-maple-look center instrument panel trim; 190-watt AM/FM stereo with in-dash 6-disc CD changer and 7 speakers (including subwoofer and 2 tweeters); overhead storage console; retractable cargo cover	—	O
PACKAGE 3: Package 2 items plus power sliding-glass moonroof with sunscreen; heated front seats and door mirrors	—	O
Electronic 4WD with Active Torque Control Coupling (ATCC)	O	O
4-speed automatic transmission	O	S
Front side-impact air bags* and side-impact air curtains with rollover protection	—	O
Rear spoiler	O/A	O/A
Rear bumper step plate	O/A	O/A
Door edge guards, color-keyed	O/A	O/A
Side step tubes	O/A	O/A
Wheel locks	O/A	O/A
All-weather floor mats	O/A	O/A
Cargo net	O/A	O/A
Cargo tray	O/A	O/A
Cargo tray and organizer	O/A	O/A
Perimeter alarm	O	O
Compass & outside temperature auto-dimming mirror	O/A	O/A
Compass & outside temperature auto-dimming mirror with HomeLink®	O/A	O/A
Moonroof wind deflector	—	O/A
In-dash 6-disc CD changer	O/A	O/A
Cassette player	O/A	O/A
Rear-Seat Entertainment System with DVD player (not available with moonroof)	O/A	O/A

SPECIFICATIONS	Tribute <i>i</i>	Tribute s
Engine size and type	2.3L DOHC 16-valve 4-cylinder	3.0L DOHC 24-valve V6
Horsepower	153 @ 5800 rpm	200 @ 6000 rpm
Torque, lb-ft	152 @ 4250 rpm	193 @ 4850 rpm
Ignition system	Distributorless electronic ignition	
Fuel system; recommended fuel type	Multipoint electronic fuel injection; regular unleaded gasoline	
EPA estimated fuel economy, mpg	2WD (man.): 24 city/29 highway 2WD (auto.): 22 city/25 highway 4WD (man.): 22 city/26 highway 4WD (auto.): 19 city/22 highway	— 2WD (auto.): 20 city/25 highway 4WD (auto.): 18 city/22 highway
Body construction	Unitized steel with "Triple H" construction	
Steering	Rack-and-pinion with engine-speed-sensing variable power assist	
Turning circle, curb-to-curb	38.3 feet	38.3 feet
Base curb weight	2WD: 3181 lb (man.); 3260 lb (auto.) 4WD: 3346 lb (man.); 3408 lb (auto.)	2WD: 3322 lb (auto.) 4WD: 3482 lb (auto.)

EXTERIOR DIMENSIONS (inches)	Tribute <i>i</i>	Tribute s
Wheelbase/overall length	103.1/174.4	103.1/174.4
Overall width	72.0	72.0
Overall height (with roof rails)	70.0	70.0
Track, front/rear	61.3/60.9	61.3/60.9
Ground clearance	8.4	8.4

INTERIOR DIMENSIONS (inches)	Tribute <i>i</i>	Tribute s
Headroom, front/rear with moonroof	40.4/39.2	40.4/39.2 39.3/37.5
Legroom, front/rear	41.6/36.3	41.6/36.3
Shoulder room, front/rear	56.1/56.2	56.1/56.2

CAPACITIES	Tribute <i>i</i>	Tribute s
Cargo volume, rear seat up (cubic feet)	29.7	29.7
Cargo volume, rear seat folded (cubic feet)	66.8	66.9
Passenger volume (cubic feet)	100.1	100.1
Passenger volume with moonroof (cubic feet)	—	96.6
Towing (lb)	1500	3500
Roof-rack payload (lb)	100	100
Fuel tank capacity (gallons)	16.5	16.5

EXTERIOR COLORS**MYSTIC BLACK CLEARCOAT**

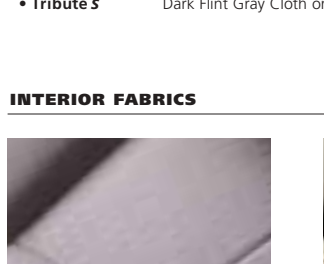
- Tribute *i*
- Tribute **s**

**PLATINUM METALLIC**

- Tribute *i*
- Tribute **s**

**CLASSIC WHITE CLEARCOAT**

- Tribute *i*
- Tribute **s**

**DARK FLINT GRAY CLOTH**

Tribute *i*

DARK TITANIUM METALLIC

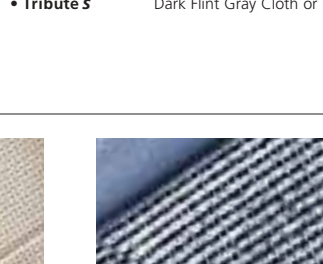
- Tribute *i*
- Tribute **s**

**STORMFRONT GRAY METALLIC**

- Tribute *i*
- Tribute **s**

**LAPIS BLUE METALLIC**

- Tribute *i*
- Tribute **s**

**DARK FLINT GRAY CLOTH**

Tribute **s**

REDFIRE METALLIC

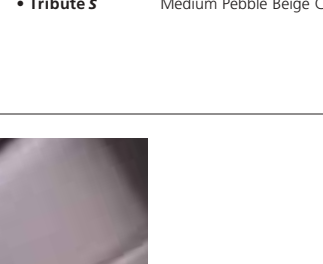
- Tribute *i*
- Tribute **s**

**BLAZING COPPER METALLIC**

- Tribute *i*
- Tribute **s**

**PEBBLE ASH METALLIC**

- Tribute *i*
- Tribute **s**

**DARK FLINT GRAY LEATHER**

Optional

INTERIOR FABRICS**DARK FLINT GRAY CLOTH**

Tribute *i*

MEDIUM PEBBLE BEIGE CLOTH

Tribute **s**

DARK FLINT GRAY CLOTH

Tribute **s**

MEDIUM PEBBLE BEIGE LEATHER

Optional

DARK FLINT GRAY LEATHER

Optional

PRODUCT CHANGES AND OPTIONS AVAILABILITY: Following publication of this brochure, certain changes in standard equipment, options, prices and the like, or product delays may have occurred which would not be included in these pages. Your Mazda dealer is your best source for up-to-date information. Mazda reserves the right to change product specifications at any time without incurring obligations. Options shown or described in this brochure are available at extra cost and may be offered only in combination with other options or subject to additional ordering requirements or limitations.

MAKING YOUR MAZDA YOURS ALONE.

Part of the joy of owning a new Mazda Tribute is personalizing it. And the best way to enhance its appearance or performance is with Genuine Mazda Accessories. In fact, all Genuine Mazda Accessories installed by your Mazda dealer prior to or at initial vehicle retail delivery, carry the same new-vehicle limited warranty as your new Mazda. See your dealer for details.

- Full- or half-front mask
- Hood bug deflector
- Moonroof wind deflector
- Door edge guards
- Side step tubes
- Rear spoiler
- Rear bumper step plate
- Windshield sunscreen
- Compass & outside temperature auto-dimming mirror with HomeLink®
- Compass & outside temperature auto-dimming mirror
- Interior dust and pollen filter
- SIRIUS Satellite Radio receiver kit*
- In-dash 6-disc CD changer
- Cassette player
- MiniDisc player
- Rear-Seat Entertainment System
- All-weather floor mats
- Seat covers (late availability)
- Ashtray
- Lighter
- Remote engine start/security system (late availability)
- Roof luggage basket with stretch net
- Roof cargo box
- Bike carrier (roof-rack or trailer-hitch mount)
- Ski carrier (roof-rack mount)
- Car cover; car cover cable lock
- Cargo organizer/cargo tray
- Cargo net
- Cargo divider
- First aid kit
- Roadside assistance kit
- Wheel locks
- Touch-up paint



A. REAR SPOILER. Add a sporty touch and help keep the rear window free of dust and snow for better visibility. **B. COMPASS & OUTSIDE TEMPERATURE AUTO-DIMMING MIRROR WITH HOMELINK®** This multipurpose rearview mirror combines compass, outside temperature and auto-dimming features with a HomeLink® controller to activate any system-connected lights, gates, alarms, etc. in your home. **C. DVD ENTERTAINMENT SYSTEM.** Take the show on the road! Our complete Rear-Seat Entertainment System, with 7" full-color flip-down monitor can play DVDs, audio CDs and MP3 CDs. Includes remote control and 2 sets of wireless headphones.

*SIRIUS Satellite Radio reception requires a subscription and Mazda satellite radio receiver accessory kit. Available only in the U.S., except Alaska and Hawaii.



WE DIDN'T INVENT THE FEELING. JUST A BETTER WAY TO GET IT.
 With 10 exhilarating models, Mazda makes it easier than ever to satisfy your practical needs. And your emotional ones. So treat yourself to the Mazda Test-Drive Experience. Put the Mazda Tribute of your choice through its paces. Down local streets, on-ramps, highways, and off-ramps. Through straightaways, S-curves and corners. Discover the responsive acceleration and steering, superb braking and surefooted handling that set every Mazda apart. And in the process, rediscover that elusive emotion of motion—that fun, connected-to-the-road feeling—that we like to call "Zoom-Zoom."

OUR DRIVER'S ASSURANCE PLAN IS AS IMPRESSIVE AS THE VEHICLES IT COVERS.
 Every new Mazda is covered by one of the industry's most comprehensive new-vehicle warranties, the **2005 Mazda Driver's Assurance Plan**. It includes a **48-month/50,000-mile, "bumper-to-bumper" Limited Warranty, plus 24/7 Emergency Roadside Assistance**. And should your Mazda Tribute require a warranty repair, the **Mazda Service Transportation Solution** can typically provide another vehicle to drive. After all, we want your new Mazda to be a source of pride, exhilaration and peace of mind, for years to come. See your Mazda dealer for details.

BRING YOURSELF UP TO SPEED.
 For more motorized fun of the virtual variety, park your Web browser at MazdaUSA.com. It's the perfect place to scope out all the 2005 Mazdas. Score seasonal incentives and/or special service offers. Pick up handy maintenance tips. And get updates on driving technology, tuning and motorsports at Mazda's **MAZDASPEED** Section. You can even "build" the Mazda Tribute of your dreams. Request a quote. And locate a Mazda dealer. So make sure your Web browser's "Favorites" list includes MazdaUSA.com.