

SPECIFICATIONS

POWERTRAIN	
Engine displacement	3.4 liters (207 cu. in.)
Horsepower	185 @ 5200 rpm
Torque (lb.-ft.)	210 @ 4000 rpm
Fuel injection	Sequential port
Transmission	Electronic 4-speed overdrive automatic
EPA estimated fuel economy	19 city/26 highway

INTERIOR DIMENSIONS	
Headroom front/middle/rear (in.)	39.9/39.3/38.9
Legroom front/middle/rear (in.)	39.9/39.0/36.7
Shoulder room front/middle/rear (in.)	59.8/61.9/59.6
First row walk-through (in.)	8.3

CAPACITIES	
Passenger	7
Fuel Tank (approx. gal.)	25.0
Towing, standard/Towing Package (lb.)	2000/3500*

EXTERIOR DIMENSIONS	
Wheelbase (in.)	120.0
Length (in.)	201.4
Width (in.)	72.2
Height (in.)	68.1
Curb weight (lb.)	3948
Track width, front/rear (in.)	61.5/63.3
Turning circle (ft.)	39.7



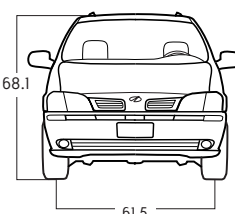
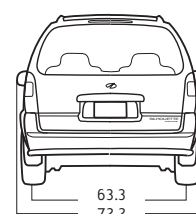
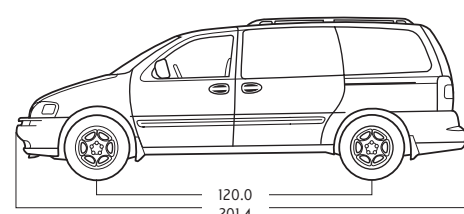
16" aluminum wheel
(Standard on GLS and
Premiere, available on GL)



16" chrome wheel
(Available on GLS and Premiere)



16" aluminum wheel
(Standard on models with
Versatrak all-wheel drive)



ACCESSORIES

ROOFTOP BIKE RACK
There's no need to dismantle bikes when you're transporting them. The rack will handle two of them so you're ready to ride when you get there.

BACKPACK
The handy nylon and mesh seat backpack has plenty of pockets to securely stow essentials and keep them handy for easy access.

CARGO CARRIER
It's like having an additional cargo compartment. The lockable hard carrier attaches to the roof rack and keeps items safe and secure.

GM'S MOBILITY PROGRAM
Persons with disabilities can request financial assistance. For details call 1-800-323-9935 (TTY users: 1-800-833-9935).

* Requires Towing Package rated at 3500 lb. capacity. Package includes heavy-duty radiator, engine oil cooler, transmission cooler and 5-wire electrical harness. Maximum trailer weight ratings are calculated assuming a properly equipped base vehicle plus driver. See your dealer for details.



A Word About This Catalog

We have tried to make this catalog comprehensive and factual. We reserve the right, however, to make changes at any time, without notice, to the information contained in this catalog. Since information may have been updated since the time of printing, please check with your Oldsmobile dealer for complete details. Oldsmobile reserves the right to lengthen or shorten the model year for any product for any reason, or to start and end model years at different times. Some photos in this catalog show vehicles with optional equipment.

The GM Card®
For information or to apply for the GM MasterCard®, call 1-800-8GM-CARD.

SmartLease By GMAC
For information about SmartLease, SmartBuy or any of the other quality GMAC financing options, see your Oldsmobile dealer, call 1-800-32-SMART, or visit our Web site at www.gmacfs.com.

Accelerate Your College Savings
Upromise is a revolutionary college savings accelerator that can help you save thousands of dollars for college. Through Upromise, America's most trusted companies contribute a portion of your everyday spending into a college savings account for your children, grandchildren or any other child you wish to support. For complete details on the GM-Upromise program, go to <http://upromise-gm.com>. Enrollment is simple and absolutely free.

The GM Mobility Program
Oldsmobile recognizes the importance of mobility to everyone's life and, therefore, offers financial assistance to persons with disabilities through the General Motors Mobility Program. This program can provide up to \$1,000 reimbursement toward the cost of eligible aftermarket adaptive equipment for drivers and passengers. For details and free resource information, call: 1-800-323-9935 (TTY users: 1-800-833-9935).

A Note On Child Safety
Always use safety belts and proper child restraints, even with air bags. Children are safer when properly secured in a rear seat. Never place a rear-facing infant restraint in the front seat of any vehicle equipped with an active air bag. See your vehicle Owner's Manual and child safety seat instructions for more safety information.

A Note On Trailering
Maximum trailer weight is calculated assuming the driver and one passenger are in the tow vehicle and it has all required trailering equipment. The weight of additional optional equipment, passengers and cargo in the tow vehicle must be subtracted from the maximum trailer weight. Some models, when loaded with driver, passengers and maximum tongue load, may exceed the maximum GVW rating for that vehicle. Optional equipment and an appropriate owner-installed hitch may be required to achieve ratings. See your dealer for details.

New Vehicle Limited Warranty
This warranty is for GM vehicles registered in the USA. See your Oldsmobile dealer for terms and conditions.
Covered for 3 years/36,000 miles (whichever comes first):
• The complete vehicle • Tires • Towing to your nearest Oldsmobile dealership • Cosmetic corrosion resulting from defects • Repairs made to correct any vehicle defect • No charge for most warranty repairs
Covered for 6 years/100,000 miles (whichever comes first):
• Rust-through corrosion

Corrosion Protection
Oldsmobile vehicles are designed and built to resist corrosion. All body and sheet metal components are warranted against rust-through corrosion for six years or 100,000 miles, whichever comes first. Application of additional rust-inhibiting materials is not required under the corrosion coverage and none is recommended. See your Oldsmobile dealer for terms of this limited warranty.

An Important Note About Alterations and Warranties
Installations or alterations to the original equipment vehicle (or chassis) as distributed



by General Motors are not covered by the General Motors New Vehicle Limited Warranty. The special body company, assembler, equipment installer or upfitter is solely responsible for warranties on the body or equipment and any alterations (or any effect of the alterations) to any of the parts, components, systems or assemblies installed by GM. General Motors is not responsible for the safety or quality of design features, materials or workmanship of any alterations by such suppliers.

Assembly
Oldsmobiles and their components are assembled or produced by different operating units of General Motors, its subsidiaries or suppliers to GM Worldwide. We sometimes find it necessary to produce Oldsmobiles with different or differently sourced components than originally scheduled. Since some options may be unavailable when your vehicle is assembled, we suggest that you verify that your vehicle includes the equipment you ordered or, if there are changes, that they are acceptable to you.

Engines
Oldsmobiles are equipped with engines produced by different operating units of GM, its subsidiaries or suppliers to GM Worldwide.

Bumper-to-Bumper Limited Warranty
For three years or 36,000 miles (whichever comes first), the GM Bumper-to-Bumper Limited Warranty covers your new Silhouette for repairs, including parts and labor, to correct any defect in materials or workmanship, including tires. With this limited warranty, there's no deductible. The complete vehicle is covered during the warranty period, except adjustment and normal maintenance items. All body sheet metal components are warranted against rust-through corrosion for six years or 100,000 miles, whichever comes first. There is also no deductible for rust-through repairs. Application of additional rust-inhibiting materials is not required or recommended. See your Oldsmobile dealer for the terms of this limited warranty.

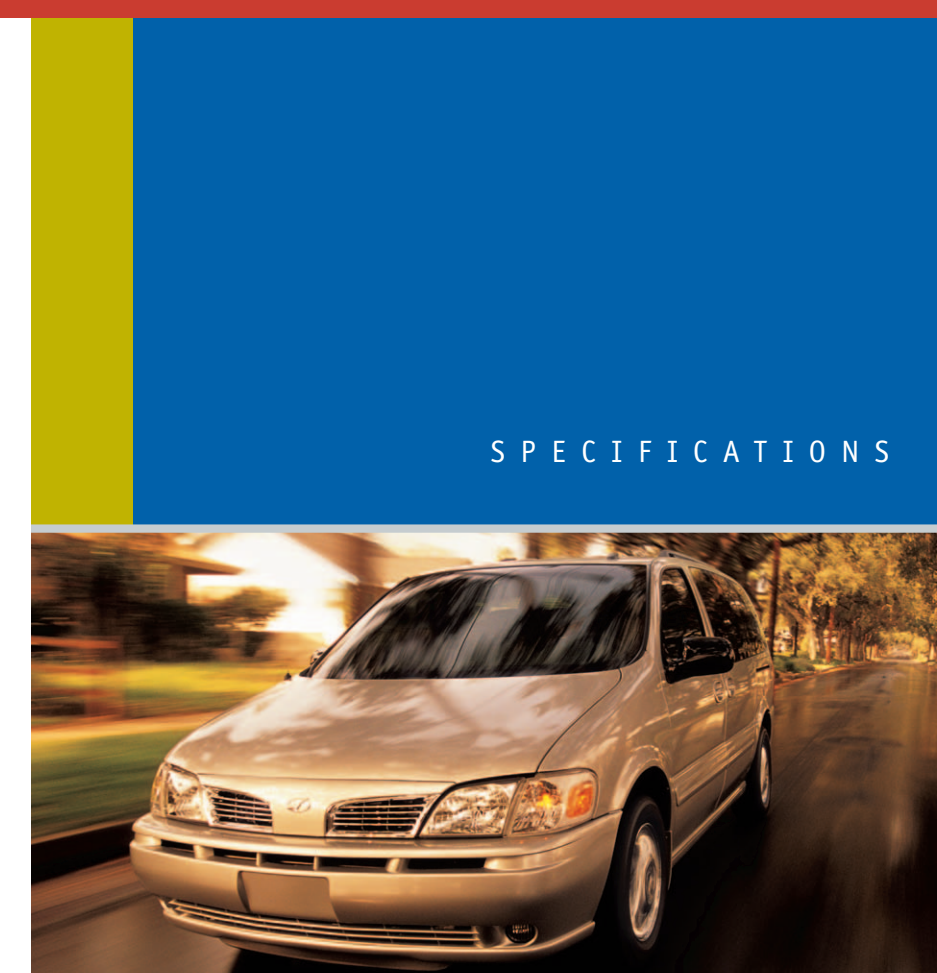
Owner Aftercare
Throughout our 3-year/36,000 mile (whichever comes first) Bumper-to-Bumper Limited Warranty, we also offer Courtesy Transportation, free trip routing and 24-hour roadside assistance by calling 1-800-442-CLDS. At Oldsmobile, we're committed to your satisfaction long after the purchase of your car. See your Oldsmobile dealer for complete terms and conditions of these programs.

Owner Center at My GMLink
The Owner Center at My GMLink is a complimentary service for GM owners within MyGMLink.com, a one-stop resource to enhance your GM ownership experience. Exclusive member benefits include online service reminders, vehicle maintenance tips, online owner's manual, special privileges and more. Sign up today at www.mygmlink.com.

GM Protection Plan
Every new 2003 Oldsmobile comes with the confidence of a 5 year/60,000 mile GM Protection Plan, or you can choose additional cash in lieu of the GMPP. Take delivery by 10/01/04. GM Protection Plan Major Guard® coverage for 5 years/60,000 miles (whichever comes first) effective from the date of delivery and 0 miles. Excludes normal maintenance. Some restrictions apply. See dealer for complete details of Major Guard and cash alternative. In Florida, coverage is provided under Oldsmobile 60-month/60,000 mile limited warranty. See Florida dealer for complete limited warranty details.

Need More Information?
Visit our Web site at www.silhouettevan.com. For information on other Oldsmobile products, visit us at www.oldsmobile.com or call 1-800-255-6537.

©2003 GM Corp. All Rights Reserved. Printed in USA 07/03. Alero, Bravada, Silhouette, Silhouette Premiere, PASSLock, Delco, Der Cool, GMAC, GM Protection Plan, GM Protection Plan Major Guard, Major Guard, The GM Card, Oldsmobile, the Oldsmobile emblem, the Oldsmobile nameplate and SmartLease are registered trademarks of General Motors Corp. Versatrak is a trademark of General Motors Corp. OnStar and the OnStar emblem are trademarks of OnStar Corp. GM Protection Plan is a service mark of General Motors Corp.



SPECIFICATIONS

Silhouette's refined performance and distinctly

car-like ride, plus its vast array of comfort,

convenience and entertainment features, make

it one of the few minivans that can satisfy the

desire for a driver-oriented vehicle that's as

entertaining to drive as it is to ride in.



INSIDE "SILHOUETTE"



STANDARD FEATURES

COMFORT AND CONVENIENCE

- AM/FM stereo radio with CD and cassette players, seek/scan tuning, auto-tone control, speed-compensated volume, TheftLock and clock
- Universal garage door opener
- Driver Information Center, compass and overhead console outside temperature display
- Auxiliary rear-seat audio/climate controls
- Air conditioning
- Cabin air filter
- TILT-wheel adjustable steering column
- Cruise control
- Power front windows with driver-side auto-down feature and third-row quarter vent windows
- Analog instrument cluster with low coolant and oil level indicators, plus dual retroactive-reset trip odometers
- Front-seat convenience net
- Overhead console
- Storage: glove box, console bin (except Premiere), rear cargo-area bins and cupholders for all seating positions
- Lighting: overhead console with map lights, rear dome/cargo lamp, dome lamp override switch, second-row reading lamps and third-row roof rail reading lamps
- Retained accessory power
- Acoustics Package
- Dual lighted visor vanity mirrors
- Remote-control keyless entry system
- Warning chimes for safety belts, headlamps on, key in ignition and turn signal on

SEATING AND TRIM

- Reclining contour front bucket seats with folding armrest
- Second-row folding captain's chairs
- Front- and second-row passenger-assist grips
- Rear cargo-area coat hooks
- Map pockets in front and side sliding doors
- Carpeted floor mats

SAFETY AND SECURITY

- Full-function traction control system
- 1-year OnStar* Safe & Sound Service†
- Safety-cage construction
- Dual frontal and front seat side-impact air bags**
- 3-point front and rear outboard safety belts with front pre-tensioners, plus rear center lap belt
- Front shoulder-belt height adjusters
- 4-wheel antilock brakes
- Brake/transmission shift interlock
- Multi-function alarm and lighting system
- Automatic programmable power door locks with lock-out prevention
- Sliding door child-security locks
- Daytime running lamps
- Halogen headlamps with automatic control
- Foglamps
- Foldaway heated power outside mirrors
- Front side and electric rear window and outside mirror defoggers
- Pulse front wipers
- Rear window wiper/washer
- Battery-rundown protection
- Rear center high-mounted stoplamp
- LATCH system for child restraints

EXTERIOR

- Solar-treated windshield
- Deep tinted glass for rear-side, rear-quarter and tailgate windows
- Concealed front wipers
- Body-color side moldings
- Front and rear splash guards
- Exterior-mounted antenna
- Dual sliding doors

POWERTRAIN/CHASSIS AND SUSPENSION

- 3400 SFI V6 engine
- Electronic 4-speed automatic transmission with overdrive
- Front-wheel drive
- Independent front MacPherson strut/rear twist axle and coil spring suspension
- Reduced effort power rack-and-pinion steering
- Maintenance-free battery
- Stainless steel exhaust
- Touring suspension with automatic leveling, touring tires and air inflator kit

MODEL-SPECIFIC FEATURES

✓ = Standard A = Available

COMFORT AND CONVENIENCE

- Front-passenger under-seat storage drawer
- Tri-zone climate control system
- Leather-wrapped steering wheel with audio controls
- Premiere On-Board Entertainment System: DVD player with fold-down overhead color monitor for rear passengers, input jacks for video games or camcorder, 2 pairs wireless head-phones and rear-seat audio/visual controls
- In-dash 6-disc CD player
- Smoker's Package
- Rear cargo net

SEATING AND TRIM

- Cloth-trimmed seating areas
- 6-way power driver's seat
- 8-way power front seats with driver's side memory
- Leather-trimmed seating areas
- Heated front seats
- Third-row 50/50 split-folding bench seat
- Third-row stowable bench seat with rear cargo convenience center
- Faux woodgrain interior accents

	GL MODEL	GLS MODEL	PREMIERE		GL MODEL	GLS MODEL	PREMIERE
COMFORT AND CONVENIENCE				SAFETY AND SECURITY			
• Front-passenger under-seat storage drawer	✓			• Versatrak all-wheel drive system		A	A
• Tri-zone climate control system		✓	✓	• Rear parking aid		✓	✓
• Leather-wrapped steering wheel with audio controls		✓	✓	EXTERIOR			
• Premiere On-Board Entertainment System: DVD player with fold-down overhead color monitor for rear passengers, input jacks for video games or camcorder, 2 pairs wireless head-phones and rear-seat audio/visual controls			✓	• Power-sliding passenger-side door	A	✓	✓
• In-dash 6-disc CD player	A	A	A	• Power-sliding driver-side door		A	✓
• Smoker's Package	A	A	A	• Gold Package	A	A	A
• Rear cargo net	A	A	A	• 16-inch aluminum wheels		✓	✓
SEATING AND TRIM				• 16-inch chrome wheels (not available with Versatrak all-wheel drive)		A	A
• Cloth-trimmed seating areas	✓			• P225/60R16 radial touring tires	✓	✓	✓
• 6-way power driver's seat	✓			• P215/60R15 radial tires (included with Versatrak)		A	A
• 8-way power front seats with driver's side memory		✓	✓	POWERTRAIN/CHASSIS			
• Leather-trimmed seating areas		✓	✓	• Towing Package	A	✓	✓
• Heated front seats		A	✓	• Engine block heater	A	A	A
• Third-row 50/50 split-folding bench seat	✓	✓	A				
• Third-row stowable bench seat with rear cargo convenience center		A	✓				
• Faux woodgrain interior accents		✓	✓				

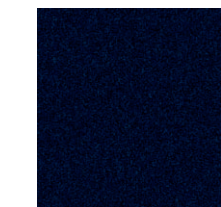
EXTERIOR COLORS/INTERIOR COLOR AVAILABILITY



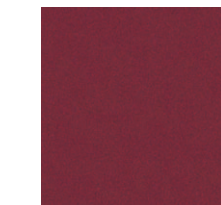
ARC



LIQUID SILVER



INDIGO

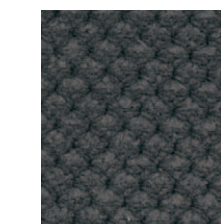


SPORT RED



SAND

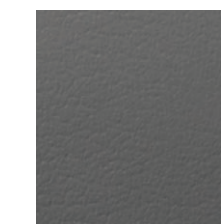
INTERIOR COLORS



GRAY CLOTH



BEIGE CLOTH



GRAY LEATHER



BEIGE LEATHER

* 1-year Safe & Sound Service Agreement is standard on Silhouette. OnStar services require vehicle electrical system and wireless service to be available and operating for features to function properly. Call 1-800-ONSTAR-7 or visit www.OnStar.com for system limitations and details. OnStar uses existing emergency service providers, as well as cellular telephone and satellite technologies. Vehicle electrical systems must be operating for OnStar to work.

† FCC ruling 02-229 eliminates the requirement that wireless carriers support the analog network after Feb. 16, 2008. As a result of this ruling, if carriers for OnStar elect to provide only digital service commencing on 2/16/08, the OnStar system in this vehicle may not operate.

** Always use safety belts and proper child restraints, even with air bags. Children are safer when properly secured in a rear seat. See the Owner's Manual for more safety information. See back cover for A Note on Child Safety.



INSIDE "SILHOUETTE"